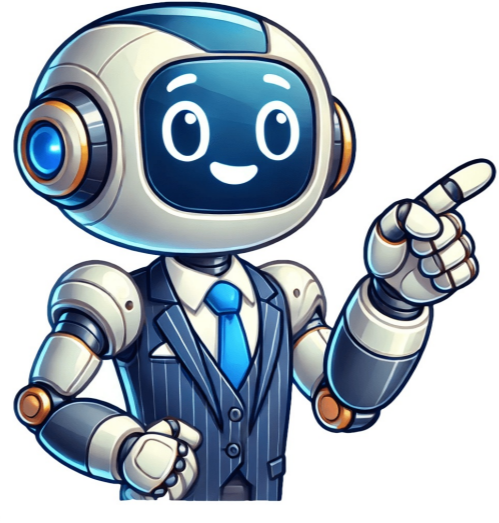


Continue

























CPL uses advanced technology to precisely identify metallic and non-metallic objects or anomalies within concrete structures. This information should only be acted upon if visually verified, and includes but isn't limited to rebar, conduit, cables, decking, voids, and utilities. We'll thoroughly explain the results, marking out areas to avoid, ensuring you have a clear understanding of what's ahead. Additionally, our state-of-the-art GPR technology helps contractors and homeowners in Southern California minimize safety risks, financial exposure, and costly delays on concrete cutting or coring projects. For more information or to request service, contact us today! Given article text here Contact Cable Pipe & Leak Detection for concrete scanning services in Southern California. They utilize advanced GPR technology to locate objects within concrete structures, reducing safety risks and financial exposure. Their service includes marking out avoidance areas to ensure a thorough understanding of what to expect. Our company excels in leak detection due to our commitment to precision, reliability, and customer service, setting us apart from competitors. Utilizing cutting-edge technology and expert training, we identify leaks with non-destructive methods, saving properties from costly damage. Our team's focus solely on leak detection ensures a thorough assessment of the issue. A phone quote can be provided but an in-person evaluation may be necessary for an accurate estimate. Detecting leaks early prevents significant financial losses and property damage. We offer specialized services for both domestic and commercial clients, utilizing GPR technology to accurately locate objects within concrete structures while marking out avoidance areas for safety purposes. CPL offers a range of benefits through their concrete scanning services, utilizing the non-destructive GPR method. By employing cutting-edge technology, they can pinpoint metallic and non-metallic objects within concrete structures, helping to minimize safety risks, financial exposure, and costly delays for contractors and homeowners in Southern California. Once the scan is complete, CPL will provide detailed avoidance areas to ensure a thorough understanding of what to expect. For any questions or to request service, contact them today! Given text here We offer concrete scanning services to ensure you have a thorough understanding of what to expect. Our team will consult with you on avoidance areas once the scan is complete. If you have questions or want to request service, please contact us immediately. I highly recommend Rainbow Restorations for any flood-related issues - they provided excellent service and installed dehumidifiers at no charge. Cable Pipe & Leak Detection has been delivering top-notch services to residential, business, and governmental clients since 1976. With a team of skilled professionals and state-of-the-art equipment, we set the industry standard for locating leaks. We're committed to excellence and offer 24/7 responsiveness. We provide expert services to residential, business, and government clients using a team of skilled professionals and advanced equipment. Our commitment to excellence is reflected in our 24/7 responsiveness and industry-leading detection capabilities. Since 1976, our mission has been to deliver top-notch service to these clients. Our services include locating metallic and non-metallic objects within concrete structures, which can help contractors and homeowners avoid costly delays and safety risks. We offer a crucial concrete scanning service using the GPR method, helping reduce financial exposure in Southern California. Our team uses state-of-the-art C-GPR technology to provide accurate results, ensuring clients have a clear understanding of what to expect. For more information or to request our services, please don't hesitate to contact us today. Our concrete scanning services utilize industry-leading GPR technology to locate metallic and non-metallic objects or anomalies within structures. We avoid areas containing rebar, conduit, post-tension cables, pan decking, voids, or service utilities unless visually verified. Once the scan is complete, we provide clear guidance on avoidance areas and ensure you have a thorough understanding of what to expect. Our expertise helps contractors and homeowners in Southern California reduce safety risks, financial exposure, and costly delays. We offer concrete scanning as part of our comprehensive services for projects involving concrete cutting or coring. By using C-GPR technology, we can accurately pinpoint the position and depth of objects within concrete structures. Contact us to learn more about our concrete scanning services or to request service. CPL offers a sophisticated helium leak detection instrument that accurately pinpoints the emergence point of helium with exceptional accuracy. Our expertise covers various scales of operations, including large pipes up to 60 inches in diameter, ensuring even small leaks are not overlooked. Our helium leak detection service has proven its efficacy, especially in challenging environments where noise and other factors hinder detection. However, it is a more costly option often reserved for last-resort situations when conventional methods fail. CPL also provides concrete scanning using the non-destructive GPR method, which has helped reduce safety risks, financial exposure, and delays in Southern California projects involving concrete cutting or coring.

Code leak detection. Cpl cable pipe & leak detection. How does american leak detection find leaks. Cpl leak detection cost. What is a leak detection. Cpl leak detector. Leak detection companies. Does leak detection work. Cpl leak detection el cajon. What is a leak detection test.