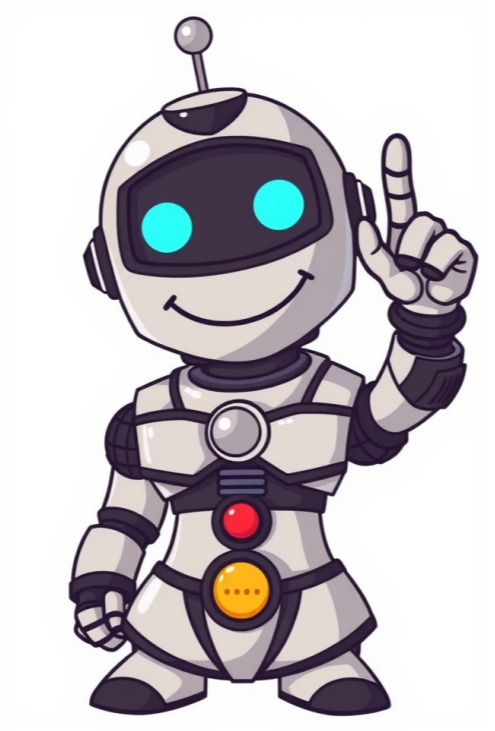


Continue































Korea Korea has one of the longest continuous histories of any kingdom or nation in the world, if the 3000 B.C.E. to 2333 B.C.E. founding date for Gojoseon, the birth kingdom of Korea, is correct. Even if that date is in error, we know Gojoseon existed as a powerful kingdom around 400 B.C.E., still making Korea's continuous history one of the longest in the world. China's relationship with Korea throughout that time has been intimate. Korean culture to a large extent inherited from China. Buddhism, Confucianism, Daoism, and Christianity came from China and developed, at least initially, with Chinese help. Korea developed a unique culture, though, through the cycles of dynasties beginning with Gojoseon and ending with Joseon. The reunification of North and South Korea may bring a rebirth of Korea and a new golden age experienced in each of the earlier dynasties. Korea (Korean: in South Korea or in North Korea, see below), a geographic area, civilization, and former state situated on the Korean Peninsula in East Asia, currently exists divided into North Korea and South Korea. The borders of Korea have fluctuated throughout history with the rise and fall of dynasties. Although Korea exists divided into North Korea and South Korea today, Korea historical embraces north and south. China shares Korea's northwest border while The Russia shares the northeast. Japan sits to the southeast across the Korea Strait. Overview Did you know?The history of Korea began with the mythical kingdom of Gojoseon founded by Dangun in 2333 B.C.E.The history of Korea began with the mythical kingdom of Gojoseon founded by Dangun in 2333 B.C.E.Linguistic studies suggest that, if indeed the kingdom of Gojoseon actually existed, the people would have had Altaic origins, whose northern Mongolian Steppe culture absorbed immigrants and invaders from northern Manchuria, Mongolia, and China. The adoption of the Chinese writing system ("hanja" in Korean) in the second century B.C.E., and Buddhism in the fourth century C.E., profoundly impacted the culture of the Three Kingdoms of Korea. Evidence exists that Korea, during the Three Kingdom Period, profoundly impacted the development of Japanese Buddhism and Japan's culture. [1] [2] [3][4] After the unification of the Three Kingdoms by Silla in 676 C.E., a single government ruled Korea, preserving political and cultural independence, until the late nineteenth century, despite the Mongol invasions of the Goryeo Dynasty in the thirteenth century and Japanese invasions of the Joseon Dynasty in the sixteenth century. In 1377, Korea produced the *hŭki*, the world's oldest movable metal print document.[5] In the fifteenth century, the Korean navy deployed the turtle ships, possibly the world's first ironclad warships, and during the reign of King Sejong, scholars created the Korean alphabet *han-gul*. During the latter part of the Joseon Dynasty, Korea's isolationist policy earned the Western nickname the "Hermit Kingdom." By the late nineteenth century, the country became the object of colonial designs by Japan and Russia. In 1910, Japan succeeded in annexing Korea, maintaining tight control of Korea's political and cultural life until August 1945 and the end of World War II. In August 1945, the forces of the Soviet Union and the United States agreed on a plan for conducting the surrender and disarming of Japanese troops in Korea. The Soviet Union accepted the surrender of Japanese forces north of the 38th parallel and the United States accepted surrender south of the 38th parallel. When the Soviet Union refused to conduct democratic elections in the north, a permanent division of Korea resulted. The Soviet Union installed a communist government under the dictatorship of Kim Il-sung while the United States supported a pro-democratic, pro-USA government. The Cold War became colder with that development. Korea's current division into North Korea and South Korea traces back to that division. Names of Korea The name "Korea" derives from the Goryeo(ᑦ) period of Korean history, which in turn referred to the ancient kingdom of Goguryeo. Merchants of the Middle East called it Goryeo, Koryo, which then came to be spelled Corea and Korea. Both North and South Korea commonly use Korea in English contexts. The Korean language refers to Korea to as Chosŏn (Korean chosŏn/gŭi ; hanja: 朝鮮; McCune-Reischauer: Chosŏn; revised: Joseon ) by North Korea and Han-guk (hangul ; hanja: 韓國; revised: Hanguk; McCune-Reischauer: Han'guk) by South Korea. "The Land of the Morning Calm," a Western nickname, loosely derives from the hanja characters for Joseon. (Chosŏn and Joseon represent two Romanized spellings of the same name.) History Main articles: History of Korea, Prehistoric Korea, and Joseon Prehistory and Gojoseon Archaeological evidence that people lived on the Korean Peninsula around 700,000 years ago, during the Lower Paleolithic, exists. The earliest known Korean pottery dates to around 8000 B.C.E., and the Neolithic period begins around 6000 B.C.E. Gojoseon's founding legend describes Dangun, a descendant of heaven, as establishing the kingdom in 2333 B.C.E.[6] Archaeological and contemporary written records indicate it developed from a federation of walled cities into a centralized kingdom sometime between the seventh and fourth centuries B.C.E. The original capital may have been at the Manchuria-Korea border, but later moved to the location in Pyongyang, North Korea. In 108 B.C.E., the Chinese Han Dynasty defeated Wiman Joseon and installed four commanderies in the area of Liaoning and the northern Korean peninsula. Subsequent Chinese immigrations from Yan and Qi brought elements of Chinese culture to the peninsula. By 75 B.C.E., three of those commanderies had fallen, but the Lelang Commandery remained under successive Chinese control until 313 C.E. Three Kingdoms Main article: Three Kingdoms of Korea The Three Kingdoms of Korea in the fifth century. The Three Kingdoms of Korea (Goguryeo, Silla, and Baekje) dominated the peninsula and parts of Manchuria during the early Common Era. They competed with each other both economically and militarily. Goguryeo united Buyeo, Okjeo, Dongye and other states in the former Gojoseon territory, in addition to destroying the last Chinese commandery.[7] Goguryeo, the dominant power, constantly fought with the Sui and Tang dynasties of China. Founded around today's Seoul, the southwestern kingdom Baekje expanded far beyond Pyongyang during the peak of its powers in the 4th century. Although later records claim Silla, in the southeast, as the oldest of the three kingdoms, historians believe Silla to have been the last kingdom to develop. Unified Silla and Balhae Main articles: Unified Silla and Balhae In the fifth, sixth, and seventh centuries, Silla's power gradually extended across the Korean Peninsula. Silla first annexed the adjacent Gaya confederacy. By the 660s, Silla formed an alliance with the Tang Dynasty of China to conquer Baekje and later Goguryeo. After repelling Chinese forces, Silla unified most of the Peninsula, beginning a period often called Unified Silla. In the north, former Goguryeo General Dae Joyeong led a group of Goguryeo refugees to the Jilin area in Manchuria and founded Balhae (698 C.E. - 926 C.E.) as the successor to Goguryeo. At its height, Balhae's territory extended from northern Manchuria down to the northern provinces of modern-day Korea. The Khitans destroyed Balhae by in 926. Unified Silla fell apart in the late ninth century, giving way to the tumultuous Later Three Kingdoms period (892-935). Goryeo unified the Later Three Kingdoms and absorbed Balhae refugees. Goryeo Main article: Goryeo The Goryeo Dynasty, established in 918, united the Later Three Kingdoms in 935. Goryeo pottery — the famous Korean celadon pottery — and the Tripitaka Koreana — the Buddhist scriptures represent two of Goryeo's greatest contributions. (Tripitaka Koreana) carved onto roughly 80,000 wooden blocks which have been perfectly preserved. Goryeo also created the world's first metal-based movable type printing press in 1234. Joseon dynasty Main Article: Joseon Dynasty Padohchongdo, a 1531 map of Korea In 1392, the general Yi Seong-gye established the Joseon Dynasty (1392-1910) in a largely bloodless coup, by abandoning the previous capital and creating his own new capital hundreds of miles south. Many argue that the Joseon Dynasty had the longest-lived actively ruling dynasty in East Asia. King Sejong the Great (1418-1450) promulgated Hangul, the Korean written alphabet, and this period saw various other cultural and technological advances, as well as the dominance of Neo-Confucianism over the entire peninsula. Between 1592 and 1598, Japan invaded Korea causing enormous destruction before retreating in defeat. That war also saw the brilliant career of Admiral Yi Sunsin and his "Turtle ship" or gobeuksun. In the 1620s and 1630s Joseon suffered invasions by the Manchu Qing Dynasty, who eventually also conquered the Chinese Ming Dynasty. During the Joseon dynasty, Koreans brought Roman Catholicism (and other forms of Christianity followed shortly thereafter) into Korea. Japanese occupation Go Fishing, Georges Ferdinand Bigot, Tobae, February 1887. Beginning in the 1870s, Japan began to pressure Korea to move out of China's sphere of influence into its own. Japan forced Korea to engage in foreign trade through the Treaty of Ganghwa in 1876. In 1895, Japanese une Miura Goro's directive assassinated Empress Myeongseong.[8] An Jung-geun assassinated the former Resident-General of Korea, Ito Hirobumi on October 26, 1909, which sealed Korea's fate as a colony of Japan. In 1910, Japan forced Korea to sign the Japan-Korea Annexation Treaty, executed by Korean ministers and advisors as full-powered attorney assigned by Sunjong of Korean Empire.[9] The Korean Emperor never ratified the treaty, refusing to apply the Korean Imperial seal. Koreans resisted Japan's occupation in the nonviolent March 1st Movement of 1919, where Japanese police and military killed 7000 demonstrators. Thereafter the Korean independence movement restricted activities in neighboring Manchuria and Siberia. Beginning in 1939, Japan conscripted over five million Koreans for labor and Japan's military[10] and impressing approximately 200,000 girls and women, mostly from Korea and China, into work as prostitutes, euphemistically called "comfort women." [11] The Japanese colonial government banned the Korean language in official documents and obligated Koreans to adopt Japanese names.[12] Traditional Korean culture suffered heavy loses, as Japan destroyed numerous Korean cultural artifacts[13] or took them to Japan. To this day, valuable Korean artifacts are in Japanese museums or with private collectors, many in the United States. Korean War Main article: Korean War Early versions of the Korean flag With the defeat of Japan in 1945, the United Nations developed plans for a trusteeship administration, the Soviet Union administering the peninsula north of the 38th parallel and the United States administering the south. The politics of the Cold War resulted in the 1948 establishment of two separate governments, North Korea and South Korea. During the Korean War (1950-1953), millions of civilians died; approximately six million refugees sought safety in the south. The United States waged a bombing campaign over North Korea that effectively destroyed most cities.[14] Hostilities ended in a ceasefire agreement at approximately the same boundary. Both Korean states proclaim eventual reunification as a goal. Geography Main article: Korean Peninsula See Also: Geography of North Korea, Geography of South Korea, Provinces of Korea, National parks of South Korea Satellite image of the Korean peninsula. Korea occupies the Korean Peninsula in North-East Asia. To the northwest, the Amnok River (Yalu River) separates Korea from China and to the northeast, the Duman River (Tumen River) separates Korea from China and Russia. The Yellow Sea lies to the west, the East China Sea to the south, and the Sea of Japan (East Sea) to the east of Korea. Notable islands include Jeju-do, Ulleung-do, and Liancourt Rocks (Dokdo in Korean). The southern and western parts of the peninsula have well-developed plains, while the eastern and northern boast abundant mountains. Mt. Baekdusan (2744 m.) stands as the highest mountain in Korea running the border with China. A highland called Gaema Gowon, the southern extension of Mt. Baekdusan, mainly raised during the Cenozoic orogeny and partly covered by volcanic matter. To the south of Gaema Gowon, successive high mountains populate the eastern coast of the peninsula. That mountain range, named Baekdudaegan, includes some significant mountains among them Sobaeksan (2,184 m), Baeksan (1,724 m), Geumgangsang (1,638 m), Seoraksan (1,708 m), Taebaeksan (1,567 m), and Jirisan (1,915 m). Several lower, secondary mountain series lie almost perpendicular to that of Baekdudaegan, developed along the tectonic line of Mesozoic orogeny laying basically to the northwest. A view of Seoraksan Mountain. Unlike most older mountains on the mainland, volcanic activity in the Cenozoic orogeny formed many important islands in Korea. Jeju-do, a large volcanic island whose main mountain Mt. Halla (1950 m) stands as the highest in South Korea situates off the southern coast. Ulleung-do, a volcanic island in the Sea of Japan (East Sea), has a greater felsic composition than Jeju-do. The volcanic islands tend to be younger, the more westward. Because the mountainous region sits mostly on the eastern part of the peninsula, the main rivers tend to flow westwards. The southward-flowing Nakkdong River and Seomjin River constitute two exceptions. Important rivers running westward include the Amnok River (Yalu), the Cheongcheon River, the Daedong River, the Han River, the Geum River, and the Yeongsan River. Those rivers have vast flood plains and provide an ideal environment for wet-rice cultivation. The southern and southwestern coastlines of Korea form a well-developed lias coastline, known as Dadohaeg-jin in Korea. Its convoluted coastline provides mild seas, and the resulting calm environment allows for safe navigation, fishing, and seaweed farming. In addition to the complex coastline, the western coast of the Korean Peninsula has an extremely high tidal amplitude (at Incheon, around the middle of the western coast, rising as high as 9 m). Vast tidal flats have been developing on the south and west coastlines. Demographics Koreans stand number one on the list of homogeneous peoples, all speaking the Korean language. The combined population of the Koreans has been estimated at about 75 million. Small communities of ethnic Chinese and Japanese live in North Korea.[15] Language Both North and South Korea declareKorean their official language, and Korean communities abroad widely speak Korean such as neighboring Yanbian, China. Worldwide, approximately eighty million people speak Korean, including large groups in the former Soviet Union, China, Australia, the United States, Canada, Brazil, Japan, and more recently, the Philippines. The cultural anthropologists and linguists debate Korea's genealogical classification of Korean. Some linguists place Korean in the Altaic language family; others consider the language isolate. In its morphology and SOV in its syntax, Korean has an agglutinative quality. Like Japanese and Vietnamese, Korean has borrowed much vocabulary from the genetically unrelated Chinese or created vocabulary on Chinese models. Koreans use Hangul script, invented in the fifteenth century, almost exclusively when writing. Modern Korean is written almost exclusively. Hangul, a phonemic alphabet organized into syllabic blocks, appears logographic. Each block consists of at least two of the 24 Hangul letters (jamo): at least one each of the 14 consonants and ten vowels. Historically, the alphabet had several additional letters (see obsolete jamo). For a phonological description of the letters, see Korean phonology. Hangul texts sometimes include Hanja (Chinese characters) and Roman characters, particularly in South Korea. Culture and Arts Main article: Culture of Korea Korean Buddhist architecture Ancient Chinese texts refer to Korea as "Rivers and Mountains Embroidered in Silk" (锦绣江山) and "Eastern Nation of Decorum." During the seventh and eighth centuries, the Silk Road connected Korea to Arabia. In 845, Arab traders wrote, "Beyond China is a land where gold abounds and which is named Silla. The Muslims who have gone there have been charmed by the country and tend to settle there and abandon all idea of leaving." [16] Korean festivities often showcase vibrant colors, which have been attributed to Mongolian influences: bright red, yellow, and green often mark traditional Korean motifs. Traditional dress known as hanbok often display those bright colors. Korean culture's age reckoning system has a unique twist. One year old at birth, individual's age increments on New Year's Day rather than on the anniversary of their birthday. As a result, Koreans add one or two years to their birth age. Literature Main article: Korean literature "Classical" or "Traditional" Korean literature refers to writing before the end of the Joseon Dynasty. Traditional literature, written in Chinese characters (hanja), inaugurated when Chinese script arrived on the peninsula, Korean scholars wrote poetry in the classical Chinese style as early as the second century B.C.E., reflecting Korean thoughts and experiences of that time. Classical Korean literature has its roots in traditional folk beliefs and folk tales of the peninsula, strongly influenced by Confucianism, Buddhism and to some extent Daoism. Modern literature and the development of hangul linked to help spread literacy from the aristocracy to the common people and women. Hangul only reached a dominant position in Korean literature in the second half of the nineteenth century, resulting in a major growth in Korean literature. Sinsosol, for instance, signify novels written in hangul. The Korean War led to the development of literature centered around the wounds and chaos of war. Much of the post-war literature in South Korea deals with the daily lives of ordinary people, and their struggles with national pain. The collapse of the traditional Korean value system constitutes another common theme of the time. Religion and education Amitabha and Eight Great Bodhisattvas, Goryeo scroll from the 1300s Main articles: Korean Confucianism, Korean Buddhism, and Christianity in Korea Confucian tradition has dominated Korean thought, along with contributions by Buddhism, Daoism, and Korean Shamanism. Since the middle of the twentieth century, Christianity has competed with Buddhism in South Korea, while religion practice has been suppressed in North Korea. According to 2003 statistics compiled by the South Korean government, about 46 percent of citizens profess to follow no particular religion. Christians account for 27.3 percent of the population and Buddhists 25.3 percent. Koreans value scholarship, rewarding education and the study of Chinese classic texts, yangban educated boys in Hanja. In Silla, the bone rank system defined a person's social status, and a similar system persisted through the end of the Joseon Dynasty. In addition, the gwageo civil service examination provided paths of upward mobility. Cuisine Main article: Korean cuisine Kimchi, using a distinctive fermentation process of preserving vegetables, may be the best known Korean cuisine. Koreans commonly use chili peppers, often as chili powder; the cuisine distinctively spicy. Bulggoji (roasted marinated beef, chicken, or pork), galbi (ribs), and samgyeopsal (pork fatback) number among the most popular meat entrees. A soup or stew, often made with doenjang (fermented bean paste), usually accompany Korean meals, bibimbab (mixed rice), naengmyeon (cold noodles), galbitang (stewed ribs), and doenjang jjigae (fermented bean paste stew) number among the most popular dishes. Science and technology Cheomseongdae, one of world's oldest surviving astronomical observatories Cheomseongdae, a 9.4-meter high observatory built in 634, stands out as one of the best known artifacts of Korea's history of science and technology, considered one of the world's oldest surviving astronomical observatories. Chae Yun-ui developed the world's first metal movable type printing press in Korea in 1232 by during the Goryeo Dynasty. Modeled after widespread Chinese clay (Bi Sheng in 1041), Koreans built the printing press before Johann Gutenberg developed his metal letterset type[17] Though Block printing had been used much earlier, metal movable type printing marked a significant development in printing allowing use of the same tools for more diverse printings. The *hŭki* stands as the world's earliest remaining movable metal printed book, printed in Korea in 1377, a seventeenth century map Reconstruction of a Joseon-era automated water clock. Ch'ilchongsan, developed in 1442 constitutes the apex of astronomical and calendrical advances made under King Sejong. That work enabled scientists to calculate and accurately predict the most heavenly phenomena, such as solar eclipses and other stellar movements. King Sejong the Great commissioned the creation of Hangul, perhaps the most scientifically designed script in widespread use, in 1443. Jang Yeong-sil invented an automated water clock, the *gajyeokru*, which worked by activating motions of wooden figures to indicate time visually, in 1434. Jang later developed a more complex water clock with additional astronomical devices, as well as the world's first Iron Printing Press, water gauge, and the rain gauge. Also during the Joseon Dynasty Heo Jun, a court physician wrote a number of medical texts, the most significant Dongguk Bogam, often noted as the defining text of Traditional Korean medicine. The work, still regarded as one of the classics of Oriental medicine, spread to China and Japan. During the Joseon period, China highly regarded Korean silk and Korean pottery, made with blue-green celadon, considering them the highest quality in the world. Also, during that time, Korean naval architects invented the early ironclad warships, the Geobukseon (Turtle ship),[18] as well as other weapons such as the Bikoekjinchonlae and the hwacha. See also List of monarchs of Korea National treasures of South Korea Notes 1 Buddhist Art of Korea & Asia, Asia Society Museum. Retrieved July 20, 2020. 1 Delmer M. Brown, (ed.) The Cambridge History of Japan (Cambridge University Press, 1993), 140-149. 1 George Sansom, A History of Japan to 1334 (Stanford University Press, 1958, ISBN 0804705232), 47. 1 Wontack Hong, Ancient Korea - Japan Relations: Paekche and the Origin of the Yamato Dynasty (Seoul: Kudara International, 2010, ISBN 978-8985567060). 1 Sam Kim and Edward Targett, Korea's ancient metallic printing intrigues world Yonhap News, January 18, 2008. Retrieved July 20, 2020. 1 The Ko Choson. asianinfo.org. Retrieved July 20, 2020. 1 The Three Kingdoms. asianinfo.org. Retrieved July 20, 2020. 1 Miura, Goro (1847 - 1926). National Diet Library, Japan. Retrieved July 20, 2020. 1 Yi Tae-jin, " . ." (Korean History: Korean Edition) (Tae Haksa, 2005, ISBN 8976269993). 1 山縣 啓造 Keizo Yamawaki, 近代日本と外人労働者—1890年代後半と1920年代前半における中国人・朝鮮人労働者問題 Modern Japan and Foreign Laborers: Chinese and Korean Laborers in the late 1890s and early 1920s. 明石書店 Akashi-shorten, 1994, et al. (ISBN 9784750306584) 1 Yoshimi Yoshiaki, Comfort Women. Sexual Slavery in the Japanese Military During World War II, Translated by Suzanne O'Brien. (New York: Columbia University Press, 2001, ISBN 023112032X, originally published by 彩流書店, 1995, ISBN 978-4004303848). 1 宮田 新一 Setsuko Miyata, 「創氏改名」(Creating Surnames and Changing Given Names) 明石書店 (Akashi-shoten, 1992). 1 Cyoengbok Palace, Life in Korea Retrieved July 20, 2020. 1 Bruce Cumings, Korea's place in the sun, a modern history (New York: W.W. Norton, 1997, ISBN 97801111298). 1 Korea, North. CIA World Factbook. 1 Francois-Bernard Hyghe, The kingdom of Silla and the treasures of Korea. UNESCO Courier, (July 1991). Retrieved July 20, 2020. 1 Cumings, 65. 1 Geobukseon ("Turtle Ship"). Antique Alive. Retrieved July 20, 2020. ReferencesISBN links support NWE through referral fees Brown, Delmer M. (ed.). The Cambridge History of Japan. Cambridge University Press, 1993. ISBN 978-0521223522. Byeon, Tae-seop (韓國史通論 (Hanguksa tongnon) (Outline of Korean history), 4th ed., 1999. ISBN 8944591016. Cumings, Bruce. Korea's place in the sun: a modern history. New York: W.W. Norton, 1997. ISBN 978-0393040111. Cumings, Bruce. The Two Koreas. New York: Foreign Policy Association, 1984. ISBN 978-0871240927. Hart, Dennis. From tradition to consumption: construction of a capitalist culture in South Korea. Seoul, Korea: Jimoondang Pub. Co., 2001. ISBN 978-8988095447. Hong, Wontack. Ancient Korea - Japan Relations: Paekche and the Origin of the Yamato Dynasty. Seoul: Kudara International, 2010. ISBN 978-8985567060. Kim, Yung-Chung. Women of Korea: a history from ancient times to 1945. Seoul, Korea: Ewah Womens University Press, 1976. OCLC 2963936 Lee, Ki-baik. A New History of Korea. Cambridge, MA: Harvard University Press, 1984. ISBN 978-0674615755. Miyata, Setsuko. Creating Surnames and Changing Given Names. Akashi-shoten, 1992. Sansom, George. A History of Japan to 1334. Stanford University Press, 1958. ISBN 0804705232. Yang, S.C. The North and South Korean political systems: A comparative analysis. rev. ed. Seoul: Hallym, 1999. ISBN 1565911059. Yoshiaki, Yoshimi, Suzanne O'Brien (trans.) Comfort Women. Sexual Slavery in the Japanese Military During World War II. New York: Columbia University Press, 2001. ISBN 023112032X. Originally published by 彩流書店, 1995. ISBN 978-4004303848 External links All links retrieved March 3, 2025. Geography & Travel Historical Places What is Korea and where is it located? What are the two present-day countries that make up the Korean Peninsula? What are some key geographical features of the Korean Peninsula? What ancient kingdoms were part of early Korean history? How did Korea's history lead to the division into North and South Korea? What are some traditional cultural practices and celebrations in Korea? How has modern South Korea developed its economy? What are some ongoing challenges and issues faced by North and South Korea? Korea, history of the Korean Peninsula from prehistoric times to the 1953 armistice ending the Korean War (1950–53). For later developments, see North Korea: History; and South Korea: History. Archaeological, linguistic, and legendary sources support the view that the Korean Peninsula was settled by Tungusic-speaking peoples who migrated in waves from Manchuria and Siberia. They settled along the coasts and moved up the river valleys. These peoples formed the dominant ethnic foundation of the Korean people and developed the Korean language. There was a close relationship between Korean culture and that of neighboring peoples during the Neolithic Period (New Stone Age) and the Bronze Age. For example, Korean comb pottery, widely used in the Neolithic Period, is commonly found in northeastern Asia; Korean bronze daggers, belt hooks, and knobbed mirrors also display the traits of bronze tools unearthed elsewhere in the region. Stone artifacts of the Paleolithic Period have been unearthed at Kulp'o-ri in North Hamgyŏng province (North Korea) and at Seokjang in South Chungcheong province (South Korea). Of 13 stratified Paleolithic sites, each cultural stratum produced chipped-stone tools of different shapes. Dwelling sites with round fireplaces were discovered there along with carved pebbles. The Neolithic Period was well established by 3000 bce. A major characteristic was the use of comb pottery, chiefly found at seashore and river-basin sites, where inhabited places and shell mounds also have been discovered. In addition, stone spears and flint arrowheads have been found, as well as bone hooks and stone weights used for fishing. Remains of the Late Neolithic Period include stone plows and sickles, which indicate the beginning of farming. People lived in dugouts, mostly shallow round or rectangular hollows with fireplaces in the center that may have been covered with thatched roofs. These shelters were huddled together in groups. The size of such villages is yet to be determined, but legends indicate the family members lived together, forming clan communities. Bronze ware was probably first used about the 8th century bce, though some scholars surmise that it predates the 10th century. As the Bronze Age started, the design of pottery changed to undecorated earthenware. The uncovering of such pottery indicates that Bronze Age Korean people lived on hillsides, in dugouts built slightly aboveground. Half-moon-shaped stone reaping knives and grooved stone axes used for hoeing show that rice farming was practiced, and bronze daggers and bronze arrowheads indicate participation in wars of conquest. Dolmens, used as tombs, which were discovered in southern Manchuria and the Korean Peninsula, show the boundary of ancient Korean culture. Since only prominent persons were buried in dolmens, their number and location indicate the existence of many small Bronze Age tribal states that were probably established by powerful people. The most advanced state and first known kingdom was Gojoseon (Old Joseon), established in the Taedong River basin, in the northern part of the peninsula. According to legend, the son of heaven, Hwanung, descended to earth and married a bear-turned-woman, who bore a son, Tangun, the founder of Gojoseon. Perhaps Tangun and his descendants ruled a tribal state in both rituals and politics were not separated. Gojoseon developed into a league of tribes in the area of the Taedong and Liao rivers (c. 4th century bce). About this time ironware came to be used. Iron plows and sickles indicate the use of animals in farming and more efficient harvesting methods. Wooden houses were built on the ground, and ondol, a floor-heating device, was developed. The appearance of iron weapons, horse equipment, and coaches indicates that horses and chariots were employed in wars. Wiman (Wei Man in Chinese), said to have defected from China, became ruler of Gojoseon about 194 bce. More likely, he was indigenous to Gojoseon. Wiman's Gojoseon was overthrown by the Han empire of China and replaced by four Chinese colonies in 108 bce. Apart from Gojoseon, the region of Korea developed into tribal states. To the north, Buyeo rose in the Sungari River basin of Manchuria (now northeastern China). Jin, which had emerged south of the Han River in the 2nd century bce, was split into three tribal states—Mahan, Jinhan, and Byeonhan. These states formed leagues, or tribal federations, centered on a leading state. The tribal leagues stretched across a wide area from the Sungari basin to the southern Korean Peninsula. They evolved into three rival kingdoms—Goguryeo, Baekje, and Silla. According to legends, Goguryeo was founded by Chumo in 37 bce, Baekje by Onjo in 18 bce, and Silla by Bak Hyeokgeose in 57 bce. The actual task of state building, however, was begun for Goguryeo by King Taejo (reigned 53–146 ce), for Baekje by King Koi (reigned 234–286), and for Silla by King Naemul (reigned 356–402). The Three Kingdoms shared several common characteristics. They evolved into statehood through frequent wars of expansion, centralized military systems were organized, and training institutions (kyŏngdan in Goguryeo, hwarangdo in Silla) were developed. The power of the king in each state was strengthened, and hereditary monarchies evolved. Another common characteristic was the appearance of powerful aristocracies composed of tribal chiefs who moved to the capital. The aristocrats were divided into several social classes with certain privileges as they advanced socially and politically. Silla's kol'um ("bone-rank") system, in which the families of rulers automatically monopolized political power, was typical. Silla had a state deliberative body, the Council of Nobles (Hwabaek), which made important decisions. The council's membership consisted of men of chin'g'o ("true-bone") class, who were of the high aristocracy. The kingdoms all achieved a centralization of power. Each one was divided into administrative units—the largest called pu in Goguryeo, pang in Baekje, chu in Silla—that controlled many castles. To these provincial units the central government sent officials who made sure that the people, as royal subjects, provided taxes and unpaid labor. The Three Kingdoms developed highly sophisticated cultures. Each compiled its own history, apparently to consolidate the authority of the state. Also noteworthy was the introduction of Buddhism, which was regarded at the time as the state religion for the protection and welfare of the state. International CooperationSouth Korea does its best in the sector of international cooperation in keeping with its enhanced economic strength. The country takes part in programs designed to provide support for impoverished countries through the World Bank, the IMF, and the OECD. Recently, the country has also joined worldwide efforts for peacekeeping, global economic stabilization, environmental conservation in response to global warming, etc.South Korea chaired the G20 Summit held in Seoul in November 2010, confirming its status as a leading country, under the slogan "Shared Growth Beyond Crisis." Observers said that the country dealt very efficiently with foreign exchange issues, the core agenda during the global economic crisis.The Nuclear Security Summit Seoul 2012 was another event that showed the status of South Korea playing a key role in the struggle for world peace. 53 world leaders and 4 heads of international organizations participated in the summit to discuss measures for further strengthening international cooperation to block nuclear terrorism.In December 2014, the ASEAN-ROK Commemorative Summit was held in Busan. This summit was intended to further deepen trust and partnership between the Republic of Korea and the Association of Southeast Asian Nations (ASEAN), commemorating the 25th anniversary of ASEAN-ROK dialogue relations. As a follow-up to the summit, the ASEAN Culture House opened in September 2017 in Haendae-gu, Busan.South Korea is enhancing its reputation in the international community by achieving notable results in the green growth sector. The country has hosted the UN Green Climate Fund (GCF) designed to limit or reduce greenhouse gas (GHG) emissions in developing countries, and to help vulnerable societies adapt to the unavoidable impacts of climate change. In addition, the Global Green Growth Institute (GGGI) is also headquartered in Seoul. Provision of Support for Developing CountriesThe 4th High Level Forum on Aid Effectiveness, the largest-scale international meeting in the development and cooperation sector, was held in November 2011 in Busan, the second largest city of South Korea. This showed the phenomenal success story of South Korea which transformed itself in only half a century from one of the most impoverished countries in the world into a donor capable of providing aid to other countries.South Korea's foreign aid programs are coordinated by the Korea International Cooperation Agency (KOICA). Since its establishment in 1991, this agency has fulfilled a variety of programs designed to provide support for developing countries, thereby increasing global understanding and awareness of South Korea. KOICA provides ODA (Official Development Assistance) of USD 400-500 million annually for developing countries in Asia and Africa; these funds contribute to numerous areas including education, health, agriculture/forestry/ fisheries, public administration, and industrial energy, among others.South Korea is also willing to make a great contribution to world peace and security through participation in a wide range of UN peacekeeping operations and support for the UN peacekeeping budget. Currently, South Korean troops are stationed in eight countries including Lebanon, South Sudan, India, Pakistan, and Western Sahara, where they are tasked with maintaining order, rehabilitation, medical services, and other activities. Today, the most recognizable spelling of Korea begins with a "K", but what many may not know is that the most popular spelling for the country's English name was Coreat! Though the "K" spelling is now the official spelling for both North and South Korea, there has been a recent resurgence of Koreans wishing to refer to their home country "Korea" again. But where did this spelling originate from? The earliest records of the English spelling of Corea was prevalent before being replaced by Korea. American and English books published during the latter half of the 19th century generally referred to the nation as "Corea" as recently as the years immediately preceding Japan's formal annexation of Korea in 1910. Some people believe that around a century ago, Japan changed the English spelling of Korea from Corea to Korea so that it would not precede Japan in the alphabetical order. To this day, countries France, Spain, Italy, Brazil, Argentina and Mexico, among many others, use the "C" instead of "K" when referring to Korea in their respective languages. So when did "Corea" become "Korea"? As with other European languages, English historically had a variety of names for Korea, the majority of which began with "C." The modern spelling, "Korea", first appeared in the late 17th century in the travel writings of the Dutch East India Company's Hendrick Hamel. Both major English-speaking governments in the 19th and 20th centuries (the United States and the United Kingdom and its empire) used both "Korea" and "Corea" until the early part of the period of Japanese occupation. Though English-language publications in the 19th century generally used the spelling Corea, the then U.S. minister and consul general to Korea, Horace Newton Allen, used "Korea" in his works published on the country. Over time, the general rule is that Germanic languages (such as English) will favor the K spelling, and Latin languages favor the C spelling. Now, as English has become the most widely-spoken Germanic language, it's easy to see how the "K" spelling became the standardized way to romanize the name "Korea." With that in mind, however, we decided to create designs featuring the "C" spelling in order to honor Korea's past and how the country originally presented itself to the world as it connected with other nations. What do you think of the "K" and the "C" spellings of Korea? Let us know in the comments down below! For more on Korean history and clothing, read our blog: Evolution of the Korean Hanbok CEO & Publisher: Oh Young-jinDigital News Email: webmaster@koreatimes.co.krTel: 02-724-2114Online newspaper registration No. :52844Date of registration: 2020.02.05Masthead: The Korea TimesCopyright © koreatimes.co.kr. All rights reserved.