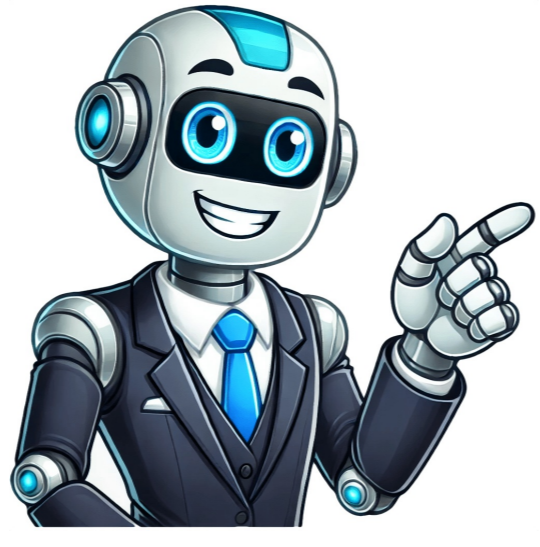


I'm not a bot



Baccarat strategy guide

Baccarat Strategy Guide: Tips for Winning Big Looking to master the art of baccarat? Baccarat is an exciting game of chance that has been around for centuries and is popular among many casino patrons due to its ease of learning and variety of betting options. The basic rules are simple, but some bets have better odds than others. When it comes to bankroll management, be cautious as the banker bet has a slightly lower house edge compared to other bets, yet can result in losses if not managed properly. On the other hand, the player bet has higher odds of winning, but is less safe for players. The tie bet is considered high-risk due to its high house edge and payout of 8-to-1. Fortunately, there are strategies to increase your chances of winning at baccarat. One such strategy is flat betting, which involves sticking to a constant wager size, eliminating the risk of going broke after losing streaks. Another popular strategy is the Fibonacci sequence, where each bet follows the mathematical series and adjusts based on previous losses. Ultimately, mastering the art of baccarat takes practice, patience, and smart bankroll management. By implementing these strategies, you'll be well-equipped to take your game to the next level and increase your chances of winning big! The Martingale System: A Baccarat Strategy for Recouping Losses If you win the first hand but lose the second, your next wager will be two units. The strategy is based on hitting a winning streak to recover all losses. While there's no guarantee of winning, it can limit losses and increase chances in the long run. Doubling bets after each loss allows for recouping previous losses when you finally win. The martingale system is effective due to its simplicity: doubling bets after losses and betting on the banker, which has a 1% house edge. This increases the likelihood of winning over losing. If applied correctly, it can lead to nice profits. However, it's not perfect and requires responsible use to avoid massive debt. Another popular baccarat strategy is the Paroli system, based on positive progression theory. It involves doubling bets after wins. The key to success lies in setting a goal and sticking to it. For example, if your target is to win \$100, double your bet after each win until you reach your goal. The D'Alembert system is one of the oldest casino betting systems, named after the French mathematician who defined it. It's based on increasing bets after losses and decreasing them after wins. By keeping track of wins and losses, you can adjust your bets accordingly and eventually recoup your losses. Lastly, the Labouchere system is based on probability theory. It requires players to place a bet and then cross off numbers from their list if they win. If they lose, they add the bet amount to the end of the list. The goal is to eventually cross off all numbers, at which point the player will have won their original wager back (plus any winnings). Given article text here The key to playing Baccarat lies in managing risk by setting a loss limit before using the system. Baccarat's origins date back to Italy centuries ago, with popular variations including Punto Banco and Chemin de Fer. The former features an always-banked game with a 5% commission, while the latter allows players to take turns as banker and has varying rules on card draws. Players can use betting systems like Fibonacci or Martingale for certain games but must adapt strategies according to the game's impact on player decisions. To increase chances of winning, focus on banker bets, which have a slightly better edge at 1.06%. Avoid tie bets due to low odds of success. Bet discipline is crucial, and never betting all-in can help manage risk. Understanding personal risk tolerance is essential for choosing the best strategy. Given article text here The Fibonacci sequence, where each number is the sum of the two preceding numbers, can be applied to various casino games like baccarat. To use this strategy in baccarat, start by betting one unit and then repeat the sequence for subsequent bets. If you lose a hand, move down two numbers; if you win but then lose, return to the original bet. The idea is that eventually, you'll hit a winning streak and recoup your losses. While there's no guarantee of winning, this system can help limit losses and increase chances in the long run. The Martingale baccarat system involves doubling your bet after each loss until you win, which will recoup all previous losses. In baccarat, bets on the banker have a 1% house edge, making it more likely to win in the long run. However, be cautious and only wager what you can afford to lose. The Paroli system is based on positive progression theory, where you double your bet after each win. Set and stick to a goal, such as winning \$100, by doubling your bet until you reach that target. The primary purpose is to win three consecutive games; when achieved, return the bet to its original amount and start again. The D'Alembert system involves increasing your bet after a loss and decreasing it after a win, aiming to recoup losses and come out ahead. It's simple to implement: just keep track of wins and losses and adjust bets accordingly. Finally, the Labouchere system, based on probability theory, requires you to set a target amount and divide it into smaller units. Bet one unit at a time, adding or subtracting units based on wins and losses until your target is reached. The Labouchere system in baccarat requires players to place bets and then track their progress on a list. If they win, they eliminate the first and last numbers; if they lose, they add their bet amount to the end. This approach can be profitable but carries risk, emphasizing the importance of setting a loss limit before using it. Baccarat has Italian roots and is played in various forms worldwide, with Punto Banco being the most popular. Its defining feature is that the casino decides when a third card should be drawn. Chemin de Fer offers a different experience where players take turns as bankers and receive commissions on winning bets. In contrast to Punto Banco, Chemin de Fer allows more player involvement in the game's progression. Baccarat Banque resembles Chemin de Fer but always has the casino as banker, while Mini Baccarat is a scaled-down version of Punto Banco with only one dealer. Regardless of the variation, the house edge favors the casino over the long term. However, by knowing when to bet and using strategies like the Labouchere system, players can increase their chances of winning. Key tips for baccarat players include setting a budget, limiting wins and losses, betting on the banker when not using a system, and avoiding tie bets due to their low odds of winning. When betting on baccarat, it's crucial to be disciplined and avoid making impulsive decisions. Never bet everything at once, as this can lead to significant losses. Don't let emotions dictate your bets, and refrain from trying to recoup losses by wagering more than you can afford to lose. Remember that any winning streak will eventually come to an end. To develop a baccarat strategy, consider your risk tolerance and base your decisions on that. Always gamble responsibly and walk away when you're ahead. In baccarat, the objective is to have the closest hand value to nine out of two dealt hands. The best approach is to focus on the banker bet (winning 45.8% of the time) or the player bet (winning 44.6%), as the tie bet should be avoided due to its low winning percentage (9.6%). By using the right strategies, you can enhance your chances of success and have more fun while playing online baccarat. Here, we'll explore some effective baccarat strategies, including which bets to place and how different betting systems can help you manage your bankroll. The key takeaway is to always bet on the banker, as it has a slightly lower house edge compared to the player's hand (approximately 1.06% versus 1.24%). By consistently betting on the banker, you'll statistically produce better returns over time. Additionally, consider using a betting system to help manage your bankroll. The Martingale System involves doubling your bet every time you lose, aiming to recover previous losses when you eventually win. While this system is straightforward and appealing for its potential to quickly win back losses, it has significant disadvantages, such as the risk of placing unaffordable bets. Another option is the Fibonacci System, which is based on the famous Fibonacci sequence. With this method, each losing bet moves you one step forward in the sequence, while a win moves you two steps back. This approach can help you manage your bankroll more effectively than the Martingale System, as it doesn't require doubling your bets after every loss. The Fibonacci system in baccarat offers a relatively stable experience, with players' bankrolls less affected by long-losing streaks. However, recovery from losses can take longer, requiring sustained winning streaks to generate real profits. In contrast, the Paroli System is a positive betting strategy that encourages making the most of winning streaks by increasing bets after each win. This system minimizes risks, primarily relying on winnings and not original bankrolls. The Labouchere System is more complex, involving setting a sequence of numbers representing desired wins, with each bet equaling the sum of the first and last numbers in the sequence. This system provides a structured approach to managing bets but can be complicated if hit with long-losing streaks. The D'Alembert System employs gradual progression, increasing bets by one unit after losses and decreasing them after wins, aiming to balance wins and losses over a gaming session.

Strategy for baccarat. Baccarat rules and strategy. Baccarat guide. Easy baccarat strategy. Best baccarat strategy.