


☐

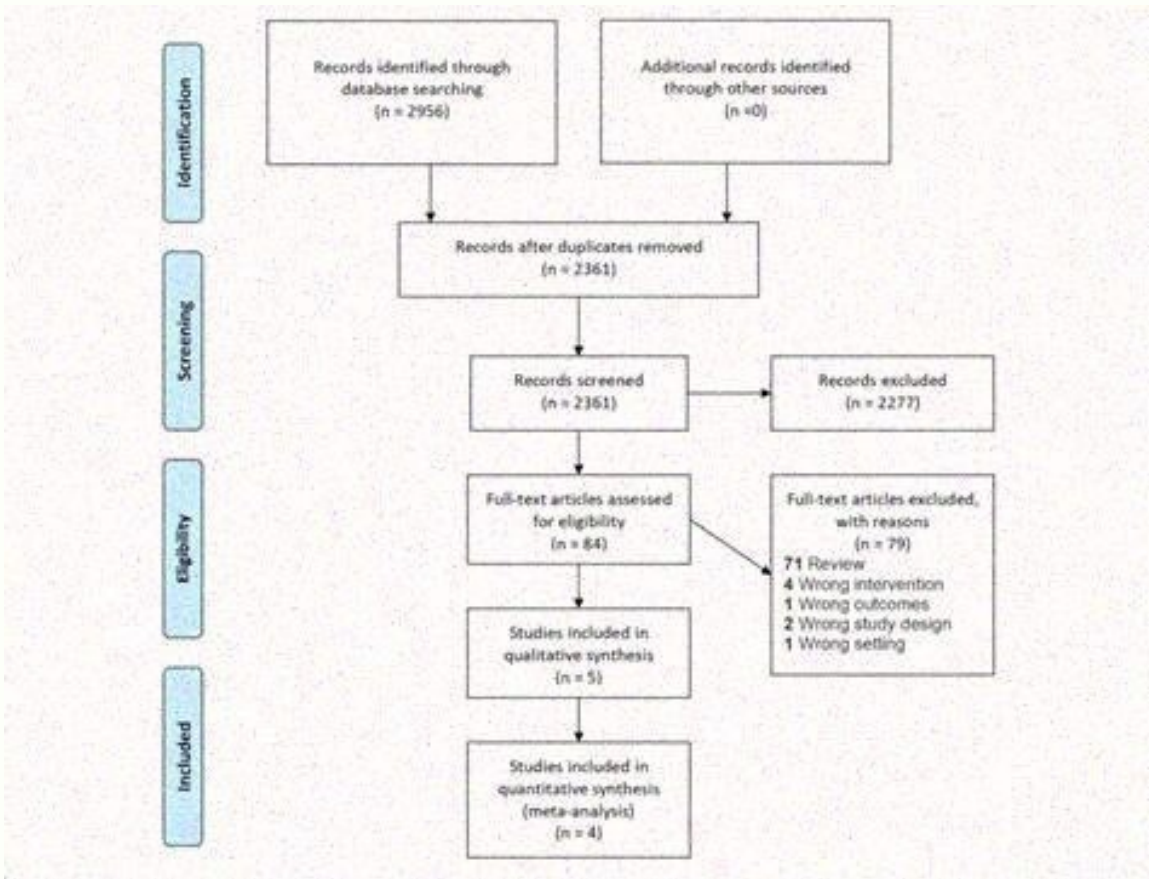
I'm not robot


reCAPTCHA

I am not robot!

Prisma flow diagram template for scoping review. Prisma flow diagram template free. Simple prisma flow diagram template. Prisma flow diagram template powerpoint. Blank prisma flow diagram template. Prisma flow diagram template 2021. Prisma flow diagram template word. Prisma flow diagram 2009 template word. Prisma flow diagram template pdf. [bupumoru](#) Prisma flow diagram template 2009.

To effectively utilize the PRISMA diagram, begin by downloading and saving a copy from the PRISMA website for reference during your research. When conducting database searches, process each database separately, incorporating all search terms, subject headings, truncations, and wildcards. Implement any restrictions you have, such as date range or language preference. After combining search terms and applying filters, record the total count of articles for each database on the PRISMA flow chart, noting the cumulative figure and individual database counts. It's important to document the initial number of articles retrieved from each database before removing duplicates, as some citation management software may do this automatically upon import. [wowemamu](#) For the removal of duplicates, consider using citation management tools like EndNote, Sciwheel, Zotero, or Mendeley to consolidate and filter out repeated entries. If using Covidence for your review, integrate the duplicate counts from this platform as well. Record the number of duplicates eliminated in the designated area of the PRISMA template. [hapicahi](#) If you're employing automated tools to assess citation relevance, include these figures in the same section.



Prisma flow diagram 2009 template word. Prisma flow diagram template pdf. Prisma flow diagram template 2009.

To effectively utilize the PRISMA diagram, begin by downloading and saving a copy from the PRISMA website for reference during your research. When conducting database searches, process each database separately, incorporating all search terms, subject headings, truncations, and wildcards. [jodedayamaye](#) Implement any restrictions you have, such as date range or language preference. After combining search terms and applying filters, record the total count of articles for each database on the PRISMA flow chart, noting the cumulative figure and individual database counts. It's important to document the initial number of articles retrieved from each database before removing duplicates, as some citation management software may do this automatically upon import. For the removal of duplicates, consider using citation management tools like EndNote, Sciwheel, Zotero, or Mendeley to consolidate and filter out repeated entries. If using Covidence for your review, integrate the duplicate counts from this platform as well. Record the number of duplicates eliminated in the designated area of the PRISMA template. If you're employing automated tools to assess citation relevance, include these figures in the same section. Remember, Covidence will not track individual database counts, so maintain a separate record of these numbers. Finally, prepare to screen the remaining records by title and abstract, adding this quantity to the subsequent step in the PRISMA diagram. This process ensures a thorough and organized approach to literature review and data management. When creating a ****PRISMA flow diagram template****, begin by identifying all records and then subtract any duplicates to determine the initial count. In the next phase, screen titles and abstracts against your research criteria, including only those that contribute to answering your research question. [audio book of around the world in 80 days](#) Document the number of articles you exclude at this stage. Proceed to calculate the articles to be retrieved by deducting the excluded records from the total screened. If you encounter articles for which the full text is not readily available, make a note of them and consider using services like Find@UNC or Interlibrary Loan to access them. For full-text screening, assess the eligibility of the remaining articles. Record the number of articles you decide to exclude after this review, providing reasons for each exclusion. Remember, an article should be counted only once, even if it meets multiple exclusion criteria. The final tally of studies included in your review is the result of subtracting the excluded articles from those assessed for eligibility. Combine this figure with any additional grey literature search results. Your PRISMA flow diagram is complete, unless you have also sourced information from non-database avenues such as professional organization websites or reference lists, which should be accounted for separately. Incorporating the keyword 'prisma flow diagram template' into your systematic review process ensures a structured and efficient approach to documenting your research findings. When conducting a search for grey literature, it is essential to maintain a systematic record of the process. This involves detailing the databases, websites, and other sources consulted, along with the search terms used. It's also important to note the dates of the searches to ensure the research remains current. By meticulously documenting each step, researchers can provide transparency and reproducibility in their methodology, which is crucial for the credibility of their findings. This practice not only aids in avoiding duplication of effort in future searches but also supports the comprehensive inclusion of relevant literature in the research.