

Owner's Manual

Safari Condo Sprinter



Safari Condo ©

© No copy or reproduction of all or any part of this manual, list of accessories, or illustrations is allowed without explicit permission from **Safari Condo**.

All patents, pending patents, publishing rights or trademarks apply throughout Canada and the United States of America.

© Copyright January 25, 2021, Safari Condo

Contents

A. INTRODUCTION	1
Welcome	1
The different versions of Mercedes Sprinter	2
Controls	3
Control panel	6
B. SAFETY TIPS	7
Detectors	7
Fire extinguisher	9
C. ELECTRICITY	9
Power Supply	9
Electrical panel	10
Fuses and Breakers	11
Converter-charger	12
Auxiliary Deep-cycle Batteries	12
Use	13
Recharge	13
Maintenance	14
Lithium batteries (optional)	14
AC Inverter	16
Solar Panels (Optional)	17
Important Facts	18
D. WATER	18
Potable Water Fill	18
Start-up and Disinfecting of Potable Water System - 15 L Propane Water Heater	20
Start-up and Disinfecting of Potable Water System - Aquago Propane Instant Water Heater (optional)	22
15 L Propane Water Heater Operation	24
Aquago Propane Instant Water Heater operation (optional)	24
Simple temporary procedure to prevent freezing when using RV as freezing temperatures are forecast	25
Water Pump	25
Interior Shower and Toilets	26
XL Plus	26
XL FLEX	27
Cassette toilet (LX)	27
Permanent Toilet with Black Water Tank (LDX and XL Plus)	29
Permanent Toilet with black water tank (XL FLEX)	30
Dumping of Holding Tanks	30
Draining Wastewaters (LX)	31
Draining Wastewaters (LDX and XL Plus)	32
Draining Wastewaters (XL Flex)	32
E. UTILITIES	34
Lighting	34
Front Dome Light	34
Light fixtures	34
Propane	35
Propane stove	35
Microwave oven	36
Fridge	37
Cabinet Panels	38
Pull-out Table (Standard on LX and LDX)	38
Portable Table (LX)	39
Inside table LDX, XL Plus and XL Flex	40

Manual Bench-bed (optional on LX, LDX and XL PLUS)	42
Electric Bench-bed (LX, LDX and XL Plus).....	44
Storage Area under Bench-Bed	45
Height Adjustable Bed (XL FLEX).....	46
Storage Area under Adjustable Bed	47
Extra bed below adjustable bed (optional on XL FLEX)	48
“U”-shaped Bench (optional on XL Plus and XL FLEX)	48
Storage under “U”-shaped Bench	49
Front Single Bed (optional).....	50
Safety Belts and Anchor Loops for Child Seats on Rear Passenger Seats.....	51
Swivelling Seat	53
Privacy Curtains	53
Diesel Heater	53
TV with DVD Player (optional).....	55
Pop-up Roof with Top Bed (optional).....	57
F. EXTERIOR	60
Variable Speed Roof Vent.....	60
Basic Model	60
Automatic Model with Remote Control (optional)	60
Maxxfan Model with Remote Control (optional)	61
Vent Maintenance.....	62
Air Conditioner (optional).....	63
Side Door Screen	64
Rear Screen.....	64
Sliding Step	67
Bike Rack (optional).....	68
G. TROUBLESHOOTING/MAINTENANCE	69
Gasket Check	69
Hot Water System Leaks.....	69
15 L Propane Water Heater.....	69
Aquago Propane Instant Water Heater (optional)	70
Toilet Leaks.....	71
Repairs.....	71
Microwave Oven	71
Fridge.....	71
Additional Information	72
Warrantee	72
H. WINTERIZING	72
Winter Maintenance	72
Winterizing Plumbing System with 15 Litre Propane Water Heater	72
Partial Plumbing System Winterizing with Aquago Propane Instant Water Heater	73
Complete Plumbing System Winterizing with Aquago Propane Instant Water Heater	74
Re-use of the instant Aquago water heater in case of light freezing.....	75
To use Aquago Instant Water Heater Following Partial Winterizing of Plumbing System.....	75
Winterizing Vehicle.....	76
ADDENDUM I – ELECTRICAL Diagram.....	78
ADDENDUM II – INVERTER Diagram.....	79

A. INTRODUCTION

Welcome

Congratulations on your purchase of a Mercedes Sprinter Safari Condo: it has been carefully designed by Safari Condo to be versatile and provide you with many years of pleasure and dependable use.

This Owner's Manual is intended to explain safe and secure use and maintenance of all RV accommodations aboard your Safari Condo recreational vehicle.

NOTE: All photos presented as reference in this manual are based on the latest information available at time of publication.

For up-to-date information, visit Safari Condo [www.safaricondo.com].

Read this manual thoroughly along with all other installed equipment Owners Manuals. Before using components and equipment of your Safari Condo, we recommend that you get to know all operating procedures and related safety measures. It is also recommended that you convey this information to everyone involved.

Please refer to Mercedes Sprinter manufacturer concerning the vehicle, its operation, safety recommendations and maintenance.

Upon transfer or sale of RV, please hand over all manuals and documentation to new owners. To help us maintain our customer listing up to date, please inform Safari Condo of any change of ownership concerning this RV.



CAUTION:



WARNING:



DANGER:

In this manual, these signs indicate recommended safety precautions. When you come across these signs, read everything carefully, as serious injury may result.



In this manual, these signs indicate that damage may result to Safari Condo or its equipment as a result of misuse or mishandling.

In this manual, right and left sides are determined while inside and looking towards front of RV.

The different versions of Mercedes Sprinter

There are four different Safari Condo versions built on the Mercedes Sprinter chassis with a diesel engine. The letters LX, LDX, LX Plus or XL FLEX indicate the specifics of each model.

Elements common to all four models are mentioned throughout this manual.

LX Features:

- 19 feet
- Double bed 54 x 76
- Two 3.5 ft³ fridges
- Propane stove
- Cassette toilet
- Diesel heater
- Propane water heater

LDX features:

- 19 feet
- Double bed 54 x 76
- One 4.3 ft³ fridge
- Propane stove
- Retractable shower
- Permanent toilet with combined black and grey water tank
- Diesel heater
- Propane water heater

XL Plus Features:

- 22 feet
- Queen bed 60 x 76
- Two 3.5 ft³ fridges
- Permanent toilet with combined black and grey water tank
- Retractable shower
- Propane stove
- Diesel heater
- Propane water heater

On LDX and XL Plus version, bench has no seatbelt and converts to enclosed toilet and shower compartment.



ATTENTION: NEVER DRIVE AWAY WITH PASSENGERS SITTING ON THIS BENCH.

XL FLEX Features:

- 22 feet
- Queen bed 60 X 76 (height-adjustable or bench-bed)
- Two fridges: 4.3 ft³ and 3.5 ft³
- Spacious central toilet/shower cabinet
- Propane stove
- Diesel heater
- Propane water heater

Controls

The different controls that manage the vehicle's accessories are located on the end of upper cabinet in sliding door opening.



XL Plus and XL Flex Controls

PHOTO A-1

Aquago propane
instant water
heater control
knob
(optional)



Interior thermometer
and humidity rate

Interior light
switches

LX and LDX Controls
PHOTO A-2

Control panel: tank
and battery charge
levels, and water
pump switch

Electric bench
switch (optional)

Automatic fan
remote control
(optional)



Microwave/Outlet #1
switch

Light dimmer switch
(optional)

PHOTO A-3

Control panel:
tank and battery
charge levels, and
water pump
switch

Microwave/Outlet #1
switch

Electric bench
switch (except XL
Flex)

Dimmer light
switch (optional)



PHOTO A-4

Awning LED
strip light
switch

Propane water
heater control
switch

Lithium battery
charge level
indicator in
percentage (%)
(optional)

Webasto diesel
heater
thermostat

Interior light
switches

Interior
thermometer and
humidity rate

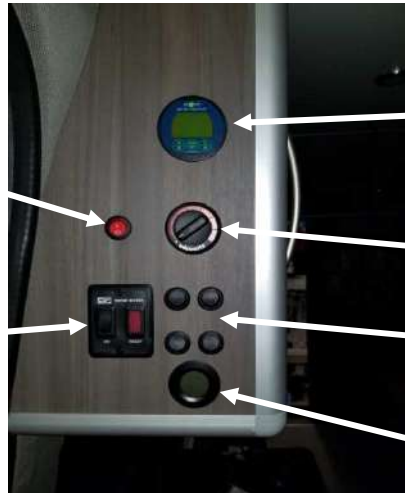


PHOTO A-5

Webasto
heater
thermostat
(located at the
rear on LX and
LDX)



PHOTO A-6

Control panel

The control panel (PHOTO A-7) shows the level of the different holding tanks and the battery charge:

<i>Model</i>	<i>BATT</i>	<i>FRESH</i>	<i>GREY</i>	<i>BLACK</i>	<i>LPG</i>
LX	voltage of the batteries	potable water	grey water	N/A	propane tank
LDX	voltage of the batteries	potable water	N/A	grey and black waters combined	propane tank
XL Plus	voltage of the batteries	potable water	N/A	grey and black waters combined	propane tank
XL FLEX	voltage of the batteries	potable water	grey water	black water	propane tank

Press the BATT button for the auxiliary battery voltage or the current voltage charge (if plugged on the grid, or engine running, or from optional solar panels). Pressing the other buttons FRESH, GREY, BLACK, LPG for the level of each tank in percentage (%) (PHOTO A-8).



Control panel

PHOTO A-8

Inverter panel (PHOTO A-9) in centre of front cabin, controls the converter/charger/inverter (see section *C. Electricity*).

Inverter panel has 3 switches below its display: centre is the Webasto heater switch, those to the right and left are for the corresponding front cabin lights.



Xantrex 2000 Watts inverter control panel

PHOTO A-9

B. SAFETY TIPS

A few warnings

The following warnings are intended for the prevention of accidents. Read them carefully before using the Safari Condo.



Never drive away if:

- Front seats are not facing forward and locked;
- Bench-bed is not in bench position;
- All tables are not stored and locked;
- Toilet and other mobile objects are not stored or tied down;
- Cabinet and fridge doors are not closed and locked.



While setting up at a campsite, make sure gearshift is in P (Parking) position and that parking brake is set, to avoid free movement of RV and possible damage or injury to you or others.



Be careful not to park over flammable materials such as leaves, dry grass, and other flammable materials: these can come in contact with hot parts of exhaust system and catch on fire.



Don't travel with loose objects: keep everything stored or tied down, as any loose object can cause injuries in case of a sudden stop, a sudden change in direction, or an accident.

Carry out all maintenance recommended by equipment manufacturers.

Detectors

Combination propane and carbon monoxide detector is located at the bottom of the inside-right wall (PHOTO B-1). Detector works through RV auxiliary deep-cycle batteries. Don't forget to test regularly using "TEST" button.



Carbon monoxide/Propane gas detector

PHOTO B-1

Smoke detector (PHOTO B-2) located above fuse panel (PHOTO C-3) is battery-powered. Don't forget to check regularly using "TEST" button. And replace battery every year.



Smoke detector

PHOTO B-2



Don't forget that Carbon monoxide/Propane gas detector uses electricity 24 hours a day. If RV is idle for 2 weeks or more, turn them off by removing fuse (CO detector, 3A), which protects them (PHOTO C-3).



ATTENTION: CHANGE BATTERY AS REQUIRED OR ACCORDING TO MANUFACTURER'S RECOMMENDATIONS, YOUR SAFETY DEPENDS ON IT.



CAUTION: CHECK ALL DETECTORS AFTER STORAGE, BEFORE EACH OUTING, AND EVERY WEEK WHEN CAMPING OR TRAVELLING.



CAUTION: CHANGING ALL DETECTORS EVERY FIVE YEARS IS RECOMMENDED.

Fire extinguisher

Access fire extinguisher located behind passenger seat through door on passenger side (PHOTO B-3).



Fire extinguisher
PHOTO B-3



IMPORTANT: When purchasing RV, it is strongly recommended that you get to know how to use supplied fire extinguisher.

C. ELECTRICITY

Power Supply

Yellow power cord is located inside under bed. It is designed for plugging into a 30 Amp 120 V power outlet.

1. Open power hook-up cover located on left side of vehicle by pulling on tab while pushing down on hinge (PHOTO C-1).
2. Plug female end into round hook-up on side of vehicle.
3. Plug other end to 30 A power source, or to 20 A or 15 A campground or residential power source using appropriate adapter (not included) (PHOTO C-2).



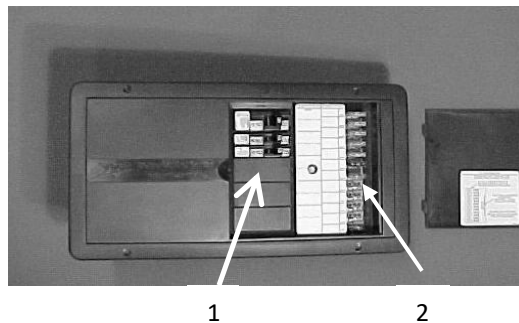
Power hook-up
PHOTO C-1



20 A or 15 A Power adapter
PHOTO C-2

Electrical panel

Electrical panel is located in locker above bed; it contains all circuit breakers (PHOTO C-3.1) and all 12 V fuses (PHOTO C-3.2).



Breaker and fuse panel
PHOTO C-3

Fuses and Breakers

In all four versions, 120 V circuit breakers (PHOTO C-3.1) control the following equipment:

ITEM	CIRCUIT	BREAKER
1	Main	30 A
2	120 V Outlets #2 and #3	15 A
3	Charger, Microwave & Outlet #1	20 A
4	Air Conditioning (optional)	20 A

In LX version, 12 V fuses (PHOTO C-3.2) control the following equipment:

ITEM	CIRCUIT	FUSE
1	Lights	7.5 A
2	Front Fridge	15 A
3	Roof Vent	10 A
4	Diesel Heater	20 A
5	Water Pump	10 A
6	Add. 12 V outlets, USB & TV	15 A
7	Carbon Monoxide/LP Gas Detectors	3 A
8	Propane Water Heater	10 A
9	Toilet	10 A
10	Rear Fridge	15 A
11	Electric bed	10 A
12	Solar Panels	30 A

In LDX version, 12 V (PHOTO C-3.2) control the following equipment:

ITEM	CIRCUIT	FUSIBLE
1	Lights	7.5 A
2	Front fridge	15 A
3	Roof vent	10 A
4	Diesel heater	20 A
5	Water pump	10 A
6	Add. 12 V outlets, USB & TV	15 A
7	Carbon Monoxide/LP Gas Detectors	3 A
8	Propane water heater	10 A
9		
10		
11	Electric bed	10 A
12	Solar panels	30 A

In XL Plus, 12 V fuses (PHOTO C-3.2) control the following equipment:

ITEM	CIRCUIT	FUSE
1	Lights	7.5 A
2	Front Fridge	15 A
3	Roof Vent	10 A
4	Diesel Heater	20 A
5	Water Pump	10 A
6	Add. 12 V outlets, USB & TV	15 A
7	Carbon Monoxide/LP Gas Detectors	3 A
8	Propane Water Heater	10 A
9	Electric bed	10 A
10	Rear Fridge	15 A
11		
12	Solar Panels	30 A

In XL FLEX, 12 V fuses (PHOTO C-3.2) control the following equipment:

ITEM	CIRCUIT	FUSE
1	Lights	7.5 A
2	Rear Fridge	15 A
3	Roof Vent	10 A
4	Diesel Heater	20 A
5	Water Pump	10 A
6	Add. 12 V outlet, USB & TV	15 A
7	Carbon Monoxide/LP Gas Detectors	3 A
8	Propane Water Heater	10 A
9	Electric bed	20 A
10	Front Fridge	15 A
11		
12	Solar Panels	30 A

Converter-charger

When connected to 120 V power supply (campground or at home), the 55 Amp battery charger is automatically switched on. Charger will either recharge both deep-cycle batteries or maintain them at full charge.

Note: It is normal, when vehicle is connected, that the light turns on, on inverter panel (PHOTO A-9).

Auxiliary Deep-cycle Batteries

Two auxiliary deep-cycle 6 Volt batteries are the heart of RV 12 Volt electrical system.

Use

Deep cycle auxiliary batteries, also known as marine batteries, provide energy for all the camping equipment in your vehicle. When plugged into an outside power source they will recharge automatically. If you are camping without services, however, it is important to limit your electrical use. Use only one light at a time, turn off light when no longer needed, shut off inverter when not in use; these are good habits to adopt in order to maximize electrical autonomy of your batteries. After a night of camping without outside power, it is recommended to start your engine after using power-hungry appliances, such as AC inverter to use the microwave. If your batteries are too weak, inverter may shut off automatically.

Chart below shows the percentage of battery load according to corresponding voltage. For the chart to be valid, there should not be any electrical usage and not any charging at time of reading.

Voltage	Percentage of load
12.6 and above	100%
12.50	90%
12.42	80%
12.32	70%
12.06	50%
11.90	40%
11.75	30%
11.58	20%
11.31	10%
10.50	0%

Battery chart

Avoid discharging batteries below 40% (11.9 volts) because these batteries like to be well charged. It is quite normal that the number on indicator moves constantly. In the evening, once the sun goes down, it is the best time of day to read the condition of your auxiliary batteries. For an optimal reading of the charge state of batteries, close all energy-consuming devices.

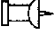
Recharge

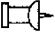
When planning to camp without external power, it is important to start with fully charged batteries. There are three ways to charge your batteries: by plugging vehicle to the grid, by driving vehicle or by using solar panels (optional). The most efficient method is to plug your vehicle 12 to 24 hours before departure. When driving, batteries recharge more slowly. You must drive on the highway for about 4 hours at 100 km/h to recharge efficiently. As for solar panels, they provide a continuous, though minor, charge to batteries (See section on Solar Panels).

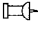
Maintenance

Normal life of batteries is between 3 and 5 years, depending on the number of cycles they will have gone through. It is therefore important to take good care of them; both deep-cycle 6V batteries are maintenance-free; and will last longer if you avoid discharging them completely.

Since these are maintenance-free batteries, you should never open the battery cells. Any attempt to open a battery will destroy the battery. The batteries are placed under the bench-bed in a closed box and ventilated outside the vehicle.

 The autonomy from your auxiliary batteries varies depending on the use of electrical appliances in your RV. Battery autonomy can be as much as 96 hours using only the fridge. This is for new original equipment batteries only and for a single fridge, without solar panels.

 Replace with deep-cycle batteries only. Some models may not fit in battery tray.

 Don't forget: batteries that discharge in very cold weather can freeze and become unrecoverable. A frozen battery is easily detectable and is not guaranteed.

Lithium batteries (optional)

If you have selected one of our 12 V lithium batteries options, here is what you should know about their use compared to our standard AGM batteries.

- The life span of lithium batteries should double, or about 8 years.
- With the same battery capacity, lithium will almost double the available power since we can use 80% of the battery's power (20% remaining).
- Lithium batteries are 50% lighter than standard AGM batteries.
- We can discharge the lithium batteries between -20 °C and 60 °C (-4 °F to 140 °F).
- We can recharge the lithium batteries between 0 °C and 60 °C (32 °F to 140 °F).
- With the lithium batteries option, you will get a battery switch (PHOTO C-4) to disconnect your batteries so that they are not recharged while their temperature is below 0 °C (32 °F).
- A thermometer is also supplied with the lithium batteries, to monitor the batteries temperature and a battery heater to heat them up if you want to use your Safari Condo in cold weather.
- Spring, summer and fall operation: compared to standard AGM batteries, almost double the energy is available without any additional action required.
- Winter operation: additional monitoring/action such as heating the lithium batteries prior to recharge when their temperature is below 0° C. Otherwise, disconnect the batteries using the disconnect switch (PHOTO C-4) to avoid battery recharging from the Safari Condo engine, the inverter/charger or the optional solar panels.
- In winter, the benefits of this additional monitoring/action is that you have better performing batteries compared to AGM batteries that do not require heating.



PHOTO C-4

Lithium self-heating batteries (optional)

Benefits of self-heating lithium batteries, in addition to the previous section.

- Self-heating lithium batteries can be recharged between -25°C and $+60^{\circ}\text{C}$ (-13°F to 140°F) since an integrated heating element will heat the battery before charging; this causes a longer charge time since heating of batteries is required prior to recharge (the heating cycle is fully automatic).
- Using the *Volthium Bluetooth* application (needs downloading), you have access to the internal battery temperature, the charge in %, the voltage, the number of completed cycles, the charge or discharge current of each battery.
- Please note that the Bluetooth feature will work within a short distance between 2 and 6 feet of the battery compartment.
- Spring, summer and fall operation: spring, summer and fall, additional action required compared to standard batteries.
- Winter operation: simply plan for additional charging time. The colder it is, the longer it will take to recharge the batteries (at -20°C , the charge will take 2 hours more than in summer).

Lithium battery monitor (Optional)

- The lithium battery monitor (PHOTO C-5) displays battery state of charge (%). This is convenient and helps to prevent going below the critical threshold which could damage or shorten battery life.
- The monitor shows the charge or discharge level in real time (in Volts and in Amps).
- Only available with the lithium battery option.



PHOTO C-5

AC Inverter

 Read the supplied manufacturer's Owner's Manual before using the AC inverter.

Inverter is useful only when vehicle is not connected to AC power supply. Inverter transforms DC power of batteries into 120 V AC power for your electrical appliances when wilderness camping. Inverter is located under rear bed as part of converter-charger. Up to 2,000 Watts of 120 V AC power is available for any 120 V AC equipment.

To activate, inverter switch must be set to "ON" on inverter panel (PHOTO A-9) located in centre of front cabin.

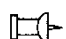
Inverter powers only one of microwave or #1 outlets such as the one next to the Microwave or Outlet #1 selection switches. Please note that only one appliance can function at any one time, whether or not connected to a 120 V power supply. Select which appliance to power using selection switches (PHOTO C-6).



Selection switches
(Microwave or Outlet #1)

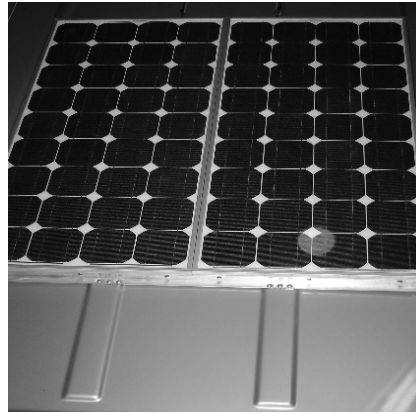
PHOTO C-6

Note: Indicator light descriptions appear on inverter panel (PHOTO A-9).

 **IMPORTANT:** Do not leave inverter on permanently while wilderness camping with your Safari Condo. The inverter continuously uses up power from auxiliary batteries when "ON". Turn it on only when needed. When not required, always turn inverter "OFF".

Solar Panels (Optional)

Solar panels are used exclusively to recharge or maintain auxiliary batteries of vehicle at an acceptable level (PHOTO C-7).



Solar panels
PHOTO C-7

With One 95-Watt Solar Panel

If vehicle is equipped with a single solar panel, this accessory will provide energy each day, but in variable quantities depending on available sunlight. If fridge set at power level #3, water pump and a minimum of lights, electrical autonomy should be about 6 days with no outside power source. Use of AC inverter will greatly reduce your autonomy.

With Two 95-Watt Solar Panels

If vehicle is equipped with two solar panels, this accessory will provide energy each day, but in variable quantities depending on available sunlight. If fridge set at power level #3, water pump and a minimum of lights, vehicle should be almost completely autonomous, sunlight permitting. Use of AC inverter is possible for short periods without too severely restricting your autonomy.

With Three 95-Watt Solar Panels

If vehicle is equipped with three solar panels, this accessory will provide energy each day, but in variable quantities depending on available sunlight. With 2 fridges turned on with power level at #3, water pump and lights at a minimum, vehicle could be completely autonomous, sunlight permitting. It will then be possible to use the inverter for short periods without too severely restricting your autonomy.

With four 95-Watt solar panels of (XL Plus and XL FLEX)

Solar panels provide a better capacity to recharge batteries and bring them back sooner to optimal load level and be 100% autonomous even when the inverter is used on a regular basis if you manage well your 12-volt energy system.

Important Facts

A small shaded area on a solar panel will produce the equivalent of a completely shaded solar panel, because all cells are connected serially. Thus, no charge will occur from this panel.

Remember that a solar panel produces energy for only about 8 hours over a 24-hour period. Maximum output of one solar panel is about 4.6 Amps/Hour in full noontime summer sunlight (about 9.2 Amps/Hour for 2 solar panels). On a rainy day, electrical output will be reduced to roughly 0.2 to 0.4 Amps/Hour per panel.

It is important to clearly understand that in order to get an extended electrical autonomy with a solar panel, power consumption inside the RV must be reduced to a minimum. In this way, energy provided by solar panels will be an important share of daily power consumption. Keep in mind also that in order to be completely autonomous, power consumption in 24 hours must be less than the energy generated by solar panels in 8 hours. Equally important to consider is that very hot temperatures lower solar panel efficiency (over 30 °C or 86 °F).

D. WATER

Potable Water Fill

There is a hinged flap on right of power input on left side of RV. It is locked to ensure your safety (PHOTO D-1).

Inside, the large cap on the left (PHOTO D-2.1) covers potable water fill for 72 litre (19 US gal) (LX) or 100 litres (26 US gal) (LDX, XL Plus and XL FLEX) tanks.

On the right, the potable water inlet with metal coupling (PHOTO D-2.2) is used for direct connection to campground or home water supply. Always use a potable water approved ½" hose and a water pressure regulator (not included).

To close hinge flap when vehicle is plugged into water system, pivot small inside panel to free opening for hose, then close cover (PHOTO D-4).



Water fill hinged flap
PHOTO D-1



1
Water fill
PHOTO D-2

2

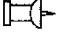
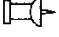
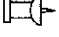


Door opened
PHOTO D-4



Fresh/potable water tank drain valve
PHOTO D-3

Potable water level indicator is located to your left in sliding door opening (see “Control Panel”, “FRESH WATER”, section A. *Introduction* (PHOTO A-8).

-  When vehicle is plugged directly into water system, close water pump using “PUMP” switch on control panel. Led indicator must be out (see “Control Panel”, section A. *Introduction*) (PHOTO A-8).
-  When vehicle is plugged directly into water system, always install a water pressure regulator (not included) between water system and hose. Pressure regulator must be placed following home or camping water supply.
-  **IMPORTANT:** While draining the potable water tank, make sure that the “PUMP” switch is turned off and that the “PUMP” green light is off (PHOTO A-8).

Start-up and Disinfecting of Potable Water System - 15 L Propane Water Heater

1. Check that water heater switch located near control panel inside RV is in “OFF” position (PHOTO D-6).
2. Switch off water pump using “PUMP” switch (PHOTO A-8) located on control panel. Indicator light must be out.
3. Before draining potable water tank, position RV so it leans to the rear.
4. Drain potable water tank and plumbing system using valve (PHOTO D-3) located under vehicle behind rear wheel on driver side.
5. When neither antifreeze nor water no longer runs off under vehicle, shut drain valve (PHOTO D-3).
6. Pour 100 ml of bleach in potable water tank and fill tank completely with water.
7. Turn on water pump by switching on “PUMP” (PHOTO A-8) on control panel. Indicator light will turn on.
8. Open cold water tap (lever raised) and let water run for about a minute to disinfect plumbing system. Repeat for exterior and interior showers, toilet and toilet wash-down shower spray (if installed).
9. Open hot water tap (lever lowered) and let water run for about a minute to fill and clean hot water line, and thoroughly disinfect plumbing system. Repeat for exterior and interior showers (if installed).
10. Position both bypass valves in horizontal position (PHOTO D-7.2) and leave them in this position until the next winterization. These valves are located inside water heater compartment at rear of vehicle on the right.
11. Open hot water tap to fill water heater; it takes about five minutes to fill all 15 litres (4 US gal). When full, leave tap on for one more minute to make sure heater is full of water and free of air pockets.
12. After 4 hours, except step 10, repeat steps 2 to 11 without adding bleach. To rinse system even better, repeat steps 2 to 11 (except step 10) without adding bleach.
13. When all steps have been completed, make sure water heater is full. While pump is turned on, open safety valve (PHOTO D-8) located on water heater behind the exterior water heater access panel. If water flows out, tank is full. Don’t forget to close safety valve. Start water heater when needed using switch (PHOTO D-6) located near control panel inside vehicle. Don’t forget to open the propane tank valve.
14. Drain holding tanks. Your RV is now ready for the camping season.



AQUAGO water heater control switch
PHOTO D-5






15 L Propane water heater switch
PHOTO D-6



1 2
Drain valve and bypass valves
PHOTO D-7

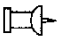


Safety valve
PHOTO D-8

-  **IMPORTANT:** When draining, make sure that “PUMP” switch is in “OFF” position and that green indicator light is out (PHOTO A-8).
-  **IMPORTANT:** Make sure water heater is full before turning it on. It is full when water has been running for more than five (5) minutes using “HOT” water tap.
-  Come winter, see “Winterizing Plumbing System with 15 L Propane Water Heater”, section *H. Winterizing*.

Start-up and Disinfecting of Potable Water System - Aquago Propane Instant Water Heater (optional)

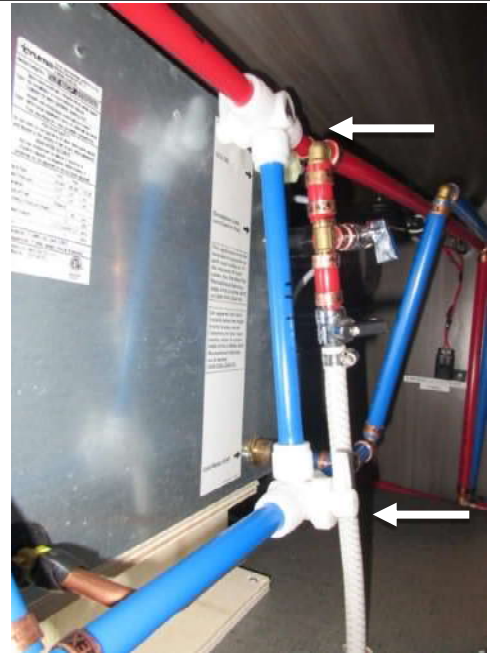
1. Check that water heater control switch (PHOTO D-5) located near control panel inside RV is in “OFF” position.
2. Switch off water pump using “PUMP” switch (PHOTO A-8) located on control panel. Indicator light must be out.
3. Before draining potable water tank, position RV so it leans to the rear.
4. Drain potable water tank and plumbing system using valve (PHOTO D-3) located under vehicle behind rear wheel on driver side.
5. When neither antifreeze nor water no longer runs off under vehicle, shut drain valve (PHOTO D-3).
6. Pour 100 ml of bleach in potable water tank and fill tank completely with water.
7. Turn on water pump by switching on “PUMP” (PHOTO A-8) on control panel. Indicator light will turn on.
8. Open cold water tap (lever raised) and let water run for about a minute to disinfect plumbing system. Repeat for exterior and interior showers, toilet and toilet wash-down shower spray (if installed).
9. Open hot water tap (lever lowered) and let water run for about a minute to fill hot water line, and thoroughly disinfect plumbing system. Repeat for exterior and interior showers (if installed).
10. Open D valve (vertical position) and run about 2 litres (2 quarts) of water on ground under the vehicle (PHOTO D-11).
11. After 4 hours, repeat steps 2 through 10 without adding bleach. For a better rinse, repeat steps 2 through 10 without adding bleach.
12. Insert the cartridge filter back inside the toggle lever located inside the exterior access door (PHOTO H-2)
13. Set A and B bypass valves in horizontal position (PHOTO D-7).
14. Open return line E valve (horizontal position) (PHOTO D-10).
15. Open D valve (vertical position) (PHOTO D-11) and run about 2 litres (2 quarts) of water on ground under the vehicle to fill water heater and return line.
16. Water heater and plumbing system can now be operated.
17. Drain holding tanks. Your RV is now ready for the camping season.

 **IMPORTANT:** When draining, make sure that “PUMP” switch is in “OFF” position and that green indicator light is out ((PHOTO A-8).

 Come winter, see “Aquago Propane Instant Water Heater”, section H. Winterizing.



E valve
PHOTO D-10

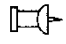


A and B bypass valves
PHOTO D-9



D valve
PHOTO D-11

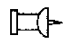
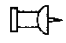
15 L Propane Water Heater Operation

-  Before using propane water heater, read accompanying Owner's Manual as well as instructions on screen panel located on outside rear right (PHOTO D-8).


This 15 l (4 US gal) capacity heater is located at rear of vehicle on the right.

Before turning on water heater, check that bypass valves (PHOTO D-9.2) are in horizontal (open) position. Make sure water heater is full by opening safety valve (PHOTO D-8) located behind water heater exterior access panel, and the pump must be on during this test. If water flows out, tank is full. Don't forget to close safety valve.

To operate water heater, set "WATER HEATER" switch to "ON" position. This switch is located near the control panel (PHOTO D-6). Water heater can be left on throughout your camping trip, as it is controlled by thermostat.

-  **IMPORTANT:** Make sure that water heater tank is full before activating water heater.
-  **IMPORTANT:** It is important to change the anode inside water heater every two years.

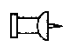
Aquago Propane Instant Water Heater operation (optional)

-  **ATTENTION:** Before using *Aquago* propane water heater, read the accompanying Owner's Manual as well as instructions on exterior access panel to prevent burns or other injuries.

Before operating water heater, check the following points:

1. Bypass valves A and B are in horizontal position (PHOTO D-9.2).
2. Return line E valve is open (horizontal position) (PHOTO D-10).
3. Water heater and return line are full of water. Check that when pump switch located on control panel (PHOTO A-2) is "ON" and D valve is open (PHOTO D-11), that there is water flowing to the ground.

At beginning of season, switch the water heater at one of the 2 "ON" positions using the exterior switch behind the outside access panel (PHOTO D-12). It is recommended to use instant water heater by selecting "COMFORT" mode (first position above the "OFF" position on the inside control knob (PHOTO D-5). After 20 seconds the water will be hot. Once hot water is no longer required, turn "Water heater" control knob to "OFF" position. Repeat operation for each use of hot water.

-  **IMPORTANT:** Close water heater after each hot water use by turning the control switch. This will prevent any quick limestone accumulation in small pipes of water heater system.

Limestone accumulation cannot be completely avoided; if the heater provides water at a lower temperature than when it was new, cleaning of the *Aquago* heater system must be performed by an authorized *Truma* service centre.



Aquago water heater switch

PHOTO D-12



CAUTION: THE TRUMA *AQUAGO* WATER HEATER IS HIGH PERFORMANCE EQUIPMENT, BUT MORE LIKELY TO FREEZE, BECAUSE IT DOESN'T HAVE THIS LARGE 15-LITRE WATER TANK THAT WILL BE THE LAST TO FREEZE IN COLD TEMPERATURES. EVEN THOUGH THE VEHICLE HAS NOT BEEN COMPLETELY WINTERIZED, IT IS RECOMMENDED TO WINTERIZE *AQUAGO* WATER HEATER AS SOON AS TEMPERATURES DIP UNDER THE FREEZING POINT.

Simple temporary procedure to prevent freezing when using RV as freezing temperatures are forecast

1. Switch water heater on “ECO” position using inside control knob (PHOTO D-5).
2. In this mode, Aquago keeps water in water heater between 4 °C and 60 °C (39 °F and 140 °F).

In this mode, *Aquago* heater is protected against freezing, but it uses propane and 12 V power on an ongoing basis. For this reason, it is a practical solution to protect *Aquago* water heater for only one or two nights. To satisfactorily protect water heater from freezing for a longer period, the “Partial winterizing of plumbing system with *Aquago* propane instant water heater” procedure (see section *H. Winterization*) is necessary.

Water Pump

Electric water pump is similar to those found in larger motor homes and RVs.

Pump switch: To activate water pump, use “PUMP” switch (PHOTO A-8) on control panel located to the rear in sliding door opening. When pump is “ON”, indicator light is on (PHOTO A-8).

Water pump will start automatically every time a hot or cold-water tap is turned on, or cassette or fixed toilet is flushed.



It is normal for pump to rumble when in use.

If your potable water tank runs dry, pump will keep on running, which will cause damage to pump. It is necessary therefore to regularly check how much water remains in tank by pressing “FRESH” button on control panel (PHOTO A-8).

“PUMP” switch ((PHOTO A-8) lets you stop pump when tank runs dry, or when not in use.

For safety reasons (and to prevent any damage) when not in use, it is recommended to shut pump off using “PUMP” switch on control panel (PHOTO A-8).



IMPORTANT: Never run water pump with an empty tank.



IMPORTANT: When vehicle is plugged directly into water system, shut off water pump (see Control Panel (PHOTO A-8).

Interior Shower and Toilets

XL Plus

To use shower, unlock bench by pushing down button located on left side of hand shower panel under bench (PHOTO D-13/PHOTO D-14). Lift backrest (PHOTO D-15) then raise seat (PHOTO D-18). The procedure is the same to use toilet.

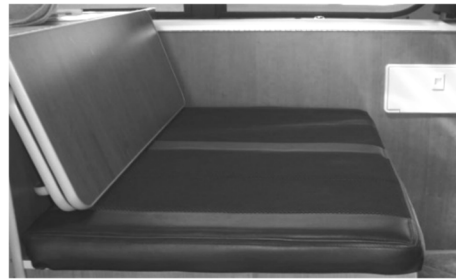
To use shower, lift up floor front section (PHOTO D-20) to free required shower floor space (PHOTO D-19).

Then lower both window and shower curtains; toilet and shower compartment are now completely secluded (PHOTO D-17/PHOTO D-18).

To save water, hand shower is equipped with water shut-off button.



Button to unlock bench
PHOTO D-14



Bench and hand shower panel
PHOTO D-13



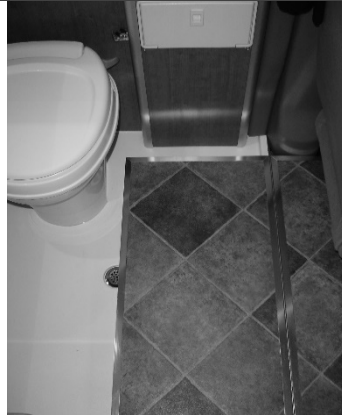
PHOTO D-16



Raise bench
PHOTO D-15



Floor raised
PHOTO D-19



Raise this floor
PHOTO D-20



Secluded shower compartment
PHOTO D-18



Shower curtains
PHOTO D-17

XL FLEX

To use shower in XL FLEX, position shower curtain (PHOTO D-22/PHOTO D-21) all around shower. Then use corner sink telescopic hand shower.

To save water, hand shower is equipped with a water shut-off button.



Shower cabinet
PHOTO D-22



Shower cabinet
PHOTO D-21

Cassette toilet (LX)



Read supplied manufacturer's Owner's Manual before using cassette toilet.



CAUTION: NEVER DRIVE WHILE PASSENGER USING TOILET.

Before using cassette toilet, make sure to have sufficient amount of liquid toilet deodorizer and a bit of water to cover bottom of cassette.

Before using toilet, open cover and pull valve blade lever (PHOTO D-24.1).

To flush toilet after use, activate pump ((PHOTO A-8). Press small blue button a few seconds to flush (PHOTO D-24.3). Close valve blade by pushing lever (PHOTO D-24.1) and close cover.



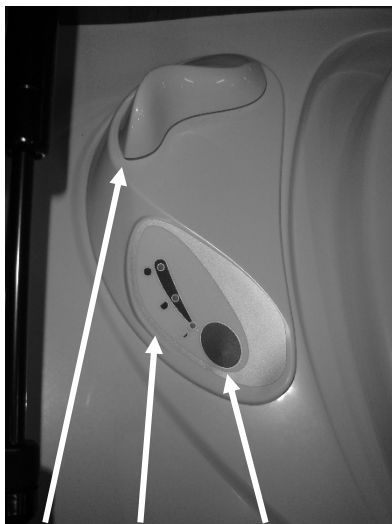
CAUTION: IT IS IMPERATIVE THAT BOWL BE EMPTY AND HOLDING TANK VALVE LEVER BE CLOSED BEFORE REMOVING CASSETTE FROM TOILET.

To empty cassette when red level indicator lights up (PHOTO D-24.2), open access door, unlock (PHOTO D-24) and remove cassette from toilet.

In RV dump station or home toilet:

- Turn emptying spout upwards and remove cap from spout (PHOTO D-23);
- Align spout with drain hole and press cassette "VENT" button (PHOTO D-27) to let air penetrate and ease draining;
- Empty contents of cassette waste tank.

After each draining, add sufficient amount of liquid toilet deodorizer and a bit of water to cover bottom of waste tank.



1 2 3
Using cassette toilet
PHOTO D-24



Spout upwards
PHOTO D-23

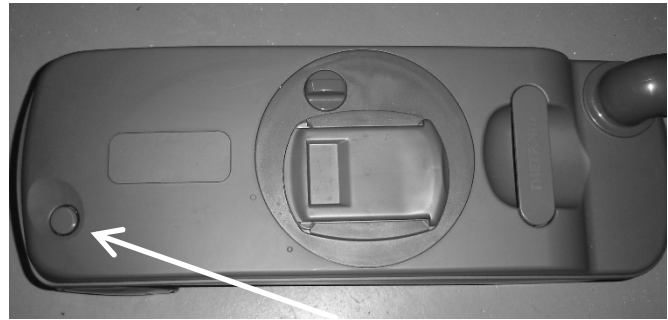


Cassette unlock
PHOTO D-25

It is possible to shut off water supply to cassette toilet. Valve is located in cupboard under sink (PHOTO D-26). This valve is also used to control rinse water flow of toilet.



Cassette toilet valve under sink
PHOTO D-26



"Vent" button
PHOTO D-27

Permanent Toilet with Black Water Tank (LDX and XL Plus)

To access toilet, unlock bench by pushing down button located on left side of hand shower panel under bench (PHOTO D-13/PHOTO D-14). Lift backrest (PHOTO D-15) then raise seat (PHOTO D-16).

If only toilet is used, it is not necessary to raise front part of floor (PHOTO D-20).

After using toilet, use hand lever (PHOTO D-29) located at rear of toilet. Press lever halfway to add water in bowl. To flush with water, press all the way. When released, drain lever returns to its original position.

To use hand spray, press hand shower button (PHOTO D-28) while pressing toilet hand lever.

It is possible to shut off water supply to toilet. Valve is located in cupboard under sink (PHOTO D-26). This valve is also used to control rinse water flow of toilet.



Hand spray lever
PHOTO D-28



Flushing lever
PHOTO D-29

Permanent Toilet with black water tank (XL FLEX)

After using toilet, use hand lever (PHOTO D-29) located at rear of toilet. Press lever halfway to add water in bowl. To flush with water, press all the way. When released, drain lever returns to its original position.

To use hand spray, press hand spray button (PHOTO D-28) while pressing toilet hand lever.

It is possible to shut off water supply to toilet. Valve is located in cupboard under sink (PHOTO D-30). This valve is also used to control rinse water flow of toilet.



Plumbing valve under sink
PHOTO D-30

Dumping of Holding Tanks

LX version has a 92 litre (24 US gal) capacity grey water tank.

LDX and **XL Plus** versions have a combined tank for grey and black waters (LDX 92 litres, XL Plus 138 litres).

XL Flex version has a 92-litre grey water tank of and a 46-litre black water tank.

If connected permanently to sewage system and only the grey water tank is used, leave wastewater valve open permanently (**LX**, PHOTO D-31.1). For this version, black water accumulates in toilet cassette.

For **LDX** and **XL Plus** versions that have a permanent toilet with combined grey and black waters collected in a single tank under the vehicle, let wastewater accumulate in holding tank (grey and black) and open the valve regularly.

For **XL FLEX** version with a permanent toilet with black water tank under vehicle, let wastewater accumulate in holding tanks (grey and black water) and open valves from time to time as required, always winding up with grey water to flush out drain hose.

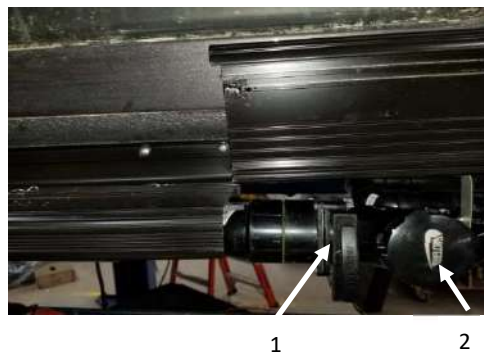
Note: “BLACK” (LDX, XL Plus and XL FLEX: black water) and “GREY” (LX and XL Flex: grey water) level indicators are on control panel located near sliding door (PHOTO A-8).

Draining Wastewaters (LX)

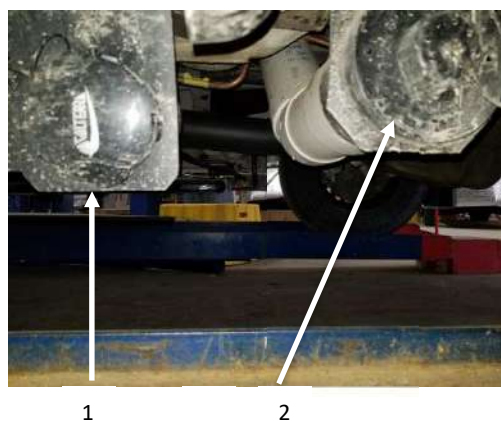
1. Lift end of rear driver-side running board locker and secure using holding bar (PHOTO D-36.4).
2. Take flexible hose located in capped tube in front of the rear wheel on driver side next to wastewater outlet (PHOTO D-33), connect to sewage connector (PHOTO D-31.2) and connect other end directly to dumping station (PHOTO D-38) or using adapter (not supplied) (PHOTO D-37).
3. Open wastewater valve (PHOTO D-31.1). On LX version, grey water only.
4. Once flow stops, lift hose connected to valve all the way to dumping station to empty hose.
5. Once drained, shut wastewater valve.
6. Disconnect flexible hose from RV.
7. Rinse flexible hose using dumping station rinsing water.
8. Store flexible hose and close all caps.
9. Close running board locker.



Dumping station connection
PHOTO D-32



Wastewater drainage
PHOTO D-31



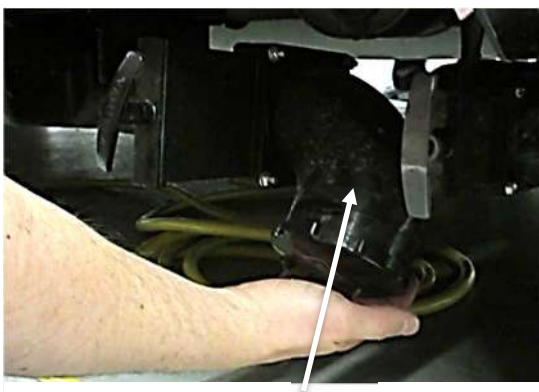
Wastewater drainage
PHOTO D-33

Draining Wastewaters (LDX and XL Plus)

1. Lift end of rear driver-side running board locker and secure using holding bar (PHOTO D-36.4).
2. Take flexible hose located in tube at front of rear wheel on driver side near waste valve (PHOTO D-34) or after XL Plus rear wheel (PHOTO D-35), connect to sewage connector (PHOTO D-36.2) and connect other end directly to dumping station (PHOTO D-38) or using adapter (not supplied) (PHOTO D-37).
3. Open valve of combined holding tank (grey and black waters).
4. Once flow stops, lift hose connected to valve all the way to dumping station to empty hose.
5. Shut drain valve and run cold water in sink for about 80 seconds to rinse sewer outlet. Then, open valve again and repeat step 4.
6. Once drained, close wastewater valve.
7. Disconnect flexible hose from RV.
8. Rinse flexible hose using dumping station rinsing water.
9. Store flexible hose and close all caps
10. Close running board locker.

Draining Wastewaters (XL Flex)

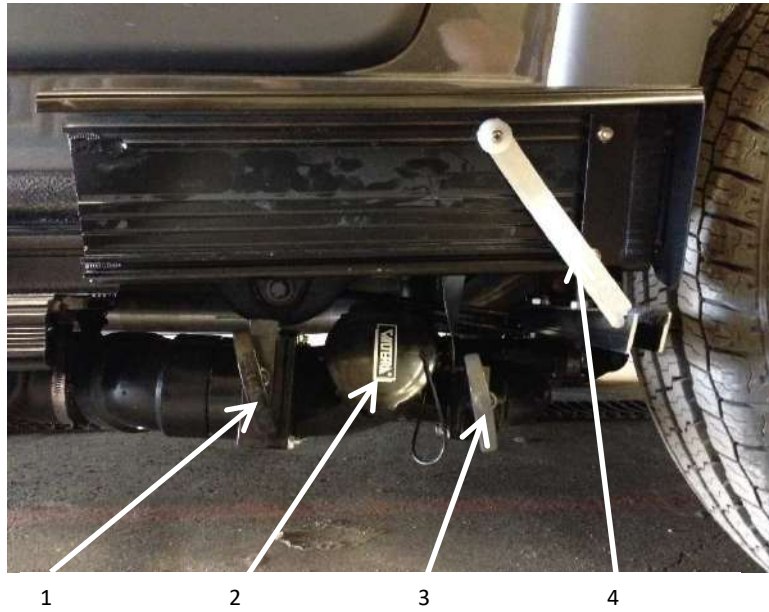
1. Lift end of rear driver-side running board locker and secure using holding bar (PHOTO D-36.4).
2. Point wastewater swivel fitting downwards (PHOTO D-34).
3. Take flexible hose located in tube at rear of the rear wheel under the vehicle (PHOTO D-35), connect to sewage connector (PHOTO D-36.2) and connect other end directly to dumping station (PHOTO D-38) or using adapter (not supplied) (PHOTO D-37).
4. Open black water valve (PHOTO D-36.1), and when empty, open grey water valve (PHOTO D-36.3).
5. Once flow stops, lift hose connected to valve all the way to dumping station to empty hose.
6. When done, shut drain valves.
7. Disconnect flexible hose from RV and point wastewater swivel fitting upwards.
8. Rinse flexible hose using dumping station rinsing water.
9. Store flexible hose and close all caps.
10. Close running board locker.



Swivel fitting
PHOTO D-34



Flexible hose storage under vehicle
PHOTO D-35



Wastewater drainage
PHOTO D-36



Dumping station connection
(direct)
PHOTO D-38



Dumping station connection
(using adapter)
PHOTO D-37



IMPORTANT: Dump holding tanks only in designated areas.

E. UTILITIES

Lighting

Front Dome Light

Dome lights in front overhead console (PHOTO E-1) are turned on and off when doors are opened and closed and powered by the Mercedes Sprinter battery.

Reading lights on flexible neck located on each side above the doors (PHOTO E-2) are powered by auxiliary batteries and are lit using the switches at their base. These lights come with the option of the shelf above front cabin.

Reading lights located on the headliner in front cabin are powered by auxiliary batteries and are lit using switches on inverter panel (PHOTO A-9).



Articulated reading lights
PHOTO E-2

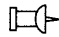
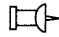
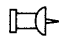


Dome
PHOTO E-1

Light fixtures

Except for dome lights activated by the opening of doors, each light section is individually switched and powered by auxiliary batteries.

Even if LED bulbs require very little auxiliary battery power, they should be used sparingly when wilderness camping for several days.

-  Dome light (PHOTO E-1) powered by vehicle battery switches off automatically after about 20 minutes if door is left ajar.
-  To switch off interior lights when leaving doors open, use dome override button.
-  For additional information on lighting system, read manufacturer's Owner's Manual.

Propane

LX, LDX: Propane tank is under the step of the sliding door. Valve access is through passenger side running board locker behind the sliding door (PHOTO E-3). To keep locker open, lower support located under step.

XL Plus, XL Flex: Propane tank is located between the rear right wheel and the sliding door. Valve access is through passenger side running board locker just behind sliding step (PHOTO E-4). To keep locker open, lower support located under step.



Running board propane valves, passenger side (XL Plus and XL FLEX)
PHOTO E-4



Running board propane valves, driver side (LX and LDX)
PHOTO E-3

For information only, valves associated with propane tank are the fill valve (PHOTO E-51), the maximum refill bleeder valve (PHOTO E-5.2) and the propane system supply valve (PHOTO E-5.3).

Propane "LP GAS" interior level indicator is located on control panel on left side of sliding door (PHOTO A-8).



CAUTION: TANK REFUELLING BY AUTHORIZED PERSONNEL ONLY.

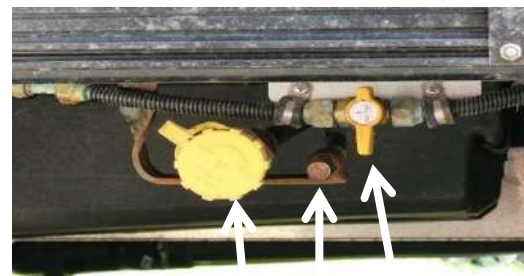


CAUTION: READ CAREFULLY ALL SAFETY PRECAUTIONS IN MANUFACTURER'S OWNERS MANUALS INCLUDED WITH ALL PROPANE FUELLED EQUIPMENT



CAUTION: NEVER USE PROPANE STOVE:

- WHILE DRIVING.
- WHEN SIDE DUO PLISSE IS EXTENDED.
- AS SPACE HEATER.

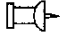


Valves for propane tank
PHOTO E-5



ATTENTION: ALWAYS CLOSE PROPANE VALVE (PHOTO E-5.3) WHEN RV IS INSIDE GARAGE OR FERRY.

Propane stove

 Before using propane stove (PHOTO E-6), read supplied manufacturer's Owner's Manual as well as Propane section (See Propane).

To use stove, press burner control and turn clockwise to feed burner, then press centre button to ignite. Release burner control after two seconds (PHOTO E-7/PHOTO E-9/PHOTO E-8). If burner does not ignite, close burner control, and then repeat steps after a while.



Propane stove
PHOTO E-6




Stove controls
PHOTO E-7



Other propane stove model
PHOTO E-9



Other propane stove model
PHOTO E-8

 **CAUTION:** NEVER USE STOVE IF DUO PLISSE IS EXTENDED. IT IS IMPORTANT TO ALWAYS OPEN WINDOW BEHIND PROPANE STOVE AND RUN FAN ROTATING OUTWARDS IN ("OUT") MODE (SEE "VARIABLE SPEED ROOF FAN", SECTION F. EXTERIOR).

 **CAUTION:** NEVER USE PROPANE STOVE AS SPACE HEATER.

Microwave oven

 Read supplied manufacturer's Owner's Manual before using microwave oven.

To use the microwave oven, open the corresponding sliding door (PHOTO E-10), flip the switch “Microwave/Outlet #1” to the “Microwave” position. The switch is located on C pillar (PHOTO E-11).



PHOTO E-10



Switch
Microwave/Outlet #1
(Micro-ondes/Prise #1)



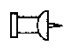

PHOTO E-11

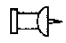
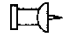
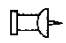
Fridge

 Read the supplied manufacturer's Owner's Manual before using fridge.

Fridge thermostat/switch is located inside fridge. Ideal temperature setting is between 2 and 4. To minimize auxiliary battery discharge, readjust fridge temperature as required (less cold if freezer is empty). To turn off fridge, set thermostat to zero beyond the “click”.

To clean inside fridge, use organic or water-based products (or baking soda) so as to prevent damage to plastic interior.

-  Before leaving, make sure that fridge door is closed properly using metal latch (PHOTO E-12).
-  **AVOID FLOODING:** When thermostat is set to zero, freezer section releases water in freezer pan. Place towel in fridge to absorb any overflow.

-  After cleaning, leave fridge door ajar to allow fridge to dry completely.
-  You may want to defrost freezer two or three times during the summer to moderate auxiliary battery discharge.
-  During winter storage, consider leaving fridge door ajar for ventilation.



Refrigerator door metal latch

PHOTO E-12

Cabinet Panels

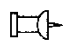
A push-button latch secures all cabinet panels. Simply push button to lock or unlock (PHOTO E-13).



Push-button

PHOTO E-13

Note: All cabinet panels are removable by lifting the catch located at the tip of each hinge.

-  Never drive away unless all panels and drawers are locked. All push buttons should be pushed in.

Pull-out Table (Standard on LX and LDX)

Opening

1. Loosen wing-nut in cupboard under the table.
2. Push out on black lever (PHOTO E-14).

3. Pull front of table (PHOTO E-15) until rear of table pulls clear of backrest.
4. To use as table, pivot rear of table towards front of vehicle (PHOTO E-17).
5. To set height, open sliding panel (PHOTO E-16) while holding table at desired height, and tighten wing-nut.



Black steel lever
PHOTO E-14



Pull front of table
PHOTO E-15

Closing

To close rear table:

1. Loosen wing-nut. Lift table, swing unsupported side of table towards storage area (PHOTO E-15).
2. Swing rest of table until table locks in place.
3. Avoid vibrations by tightening wing-nut.



Never climb on tables: they were designed solely for meals or games.



CAUTION: NEVER DRIVE AWAY UNLESS ALL TABLES ARE STORED AND LOCKED IN PLACE.



Pivot rear of table
PHOTO E-17



Height adjustment
PHOTO E-16

Portable Table (LX)

Table components are stored behind the driver seat (PHOTO E-18).



Table behind driver seat (LX)
PHOTO E-18

Opening

1. Remove base, and set in desired location.
2. Insert pedestal, stored either against cassette toilet cabinet or in table storage compartment.
3. Remove tabletop from storage and set on pedestal in one of two positions for either large (PHOTO E-20) or small table (PHOTO E-19).



Large table
PHOTO E-20



Small table
PHOTO E-19

Inside table LDX, XL Plus and XL Flex

In the LDX and XL Plus versions, table is stored in a closed space along the side of vehicle, under the window (PHOTO E-21); for XL Flex, table is located behind the back rest of the front passenger bench (PHOTO E-22). Pull out table, release leg (PHOTO E-25) and extend telescopic part of leg until it clicks, then hook table onto rail (PHOTO E-24). To increase table area, turn the bottom area left or right (PHOTO E-23).





PHOTO E-24



PHOTO E-23



PHOTO E-25

To use it outside, you need an optional adapter rail to be able to be able to secure it on the sliding door (PHOTO D-27/PHOTO D-26). Make sure that the bottom of the sliding door is clean before applying the suction cups.

Closing

To store table, repeat above operations in reverse order. Make sure all components are securely stored away.



Never climb on tables: they were designed solely for meals or games.



CAUTION: NEVER DRIVE AWAY UNLESS ALL TABLES ARE STORED AND LOCKED IN PLACE.



PHOTO E-27



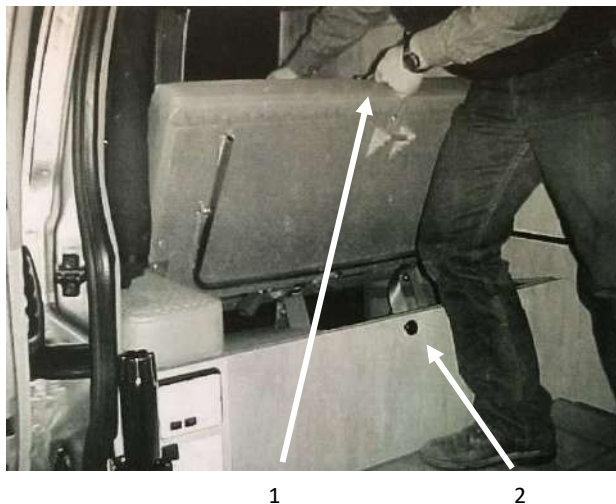
PHOTO E-26

Manual Bench-bed (optional on LX, LDX and XL PLUS)

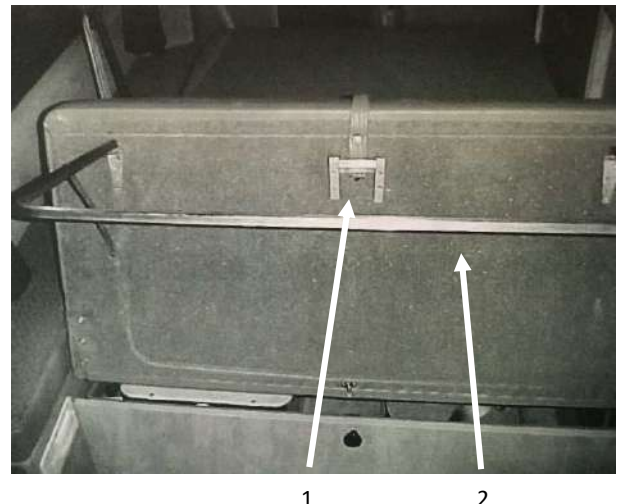
Opening

To transform bench-bed into bed:

1. Grab strap in centre of seat (PHOTO E-29.1) and pull knob (PHOTO E-29.2) to release seat.
2. With both hands, using front strap, lift seat 90° (PHOTO E-29.1), and while holding backrest strap, support it until lowered into horizontal position.
3. Holding up strap with one hand, reach underneath for centre latch (PHOTO E-28.1), unlock and unfold leg.
4. Lock leg in open position (PHOTO E-28.2).
5. Once bed is fully unfolded, make sure leg is set and locked before lowering bed (PHOTO E-30) on floor.



Opening bench-bed
PHOTO E-29



Open leg
PHOTO E-28



Open bed
PHOTO E-30

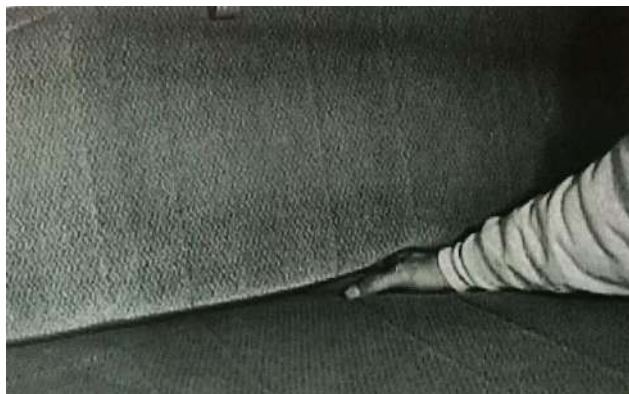
Closing

To convert bench-bed to bench:

1. Pull strap upwards (PHOTO E-29.1) to bring cushion in vertical position.
2. Close leg against cushion and lock in position.
3. Support the cushion using your thigh (PHOTO E-29).
4. While holding seat with front strap using one hand (PHOTO E-29.1) to control lowering of seat, raise backrest by pulling rear strap forward using other hand.

 **CAUTION:** DURING THIS OPERATION, HOLD ON TO BOTH STRAPS.

5. Make sure bench-bed is locked. If required, free seatbelts from centre of bench (PHOTO E-31).



Access to bench belt buckles
PHOTO E-31

Electric Bench-bed (LX, LDX and XL Plus)

Opening

To convert electric bench-bed into bed:

1. Make sure nothing interferes with electric bench-bed movement.
2. Press bottom of switch (PHOTO E-33) on C pillar near the sliding door. The few seconds delay before unfolding is normal (PHOTO E-32).
3. Make sure that bed is completely unfolded before releasing switch (PHOTO E-34).

To access storage under front of bench by lifting seat cushion, press bottom of bench-bed switch for a few seconds, but without allowing the seat to start unfolding (PHOTO E-32). Holding button allows unlocking and lifting of seat to provide access below. When finished, press top of switch to lock seat back in position.



CAUTION: MAKE SURE NOTHING INTERFERES WITH ELECTRIC BENCH-BED MOVEMENTS.



Electric bench-bed switch
PHOTO E-33



Electric bench-bed in action
PHOTO E-32



Unfolded electric bench-bed
PHOTO E-34

Closing

To convert electric bench-bed into bench:

1. Make sure nothing interferes with electric bench-bed movement.
2. Press top of switch (PHOTO E-33) located on C pillar near the sliding door. Once bench is up, hold the switch five seconds longer to ensure bench is locked in position. If switch is released too quickly, front of bench could prop up in an accident.



CAUTION: MAKE SURE NOTHING INTERFERES WITH ELECTRIC BENCH-BED MOVEMENTS.



CAUTION: MAKE SURE BENCH IS WELL LOCKED BY HOLDING SWITCH FOR FIVE (5) SECONDS AFTER BENCH-BED RETURNS TO BENCH POSITION. THIS WILL PREVENT BENCH SEAT FROM PROPPING UP IN AN ACCIDENT.

Storage Area under Bench-Bed

Under bench-bed storage area is accessible from interior or rear of RV. Access bench-bed storage area is possible from inside by lifting seat or by opening panel in front of bench-bed (PHOTO E-35). Access to the larger storage area is through the back doors (PHOTO E-36). A light, a power outlet and a 12-volt outlet are located in storage space under seat (PHOTO E-37).



Panel in front of bench-bed (open)
PHOTO E-35



Storage under bench-bed
PHOTO E-36



Utilities under bench-bed
PHOTO E-37

Height Adjustable Bed (XL FLEX)

Use either one of two switches to operate adjustable bed. One is located on C pillar on the left when entering the Safari Condo (PHOTO E-39). The other is located on the right at the rear when you open the back doors (PHOTO E-38).

It is possible to sleep on the bed, at any height. However, it is important to never adjust height with bed holding a person or an animal.



Adjustable bed switch
PHOTO E-39



Adjustable bed switch, located at the rear
PHOTO E-38

To raise adjustable bed, press and hold top of either switch, and release at desired height.

To access raised bed, use step that unfolds from divider in front of cargo area under bed (PHOTO E-40). Unlock panel by pressing both push buttons, lift and unfold second panel from inside step (PHOTO E-42.1/ PHOTO E-42.2). Lock bracket (PHOTO E-42.3) to secure second panel in open position and set down to create step for access to bed (PHOTO E-41).

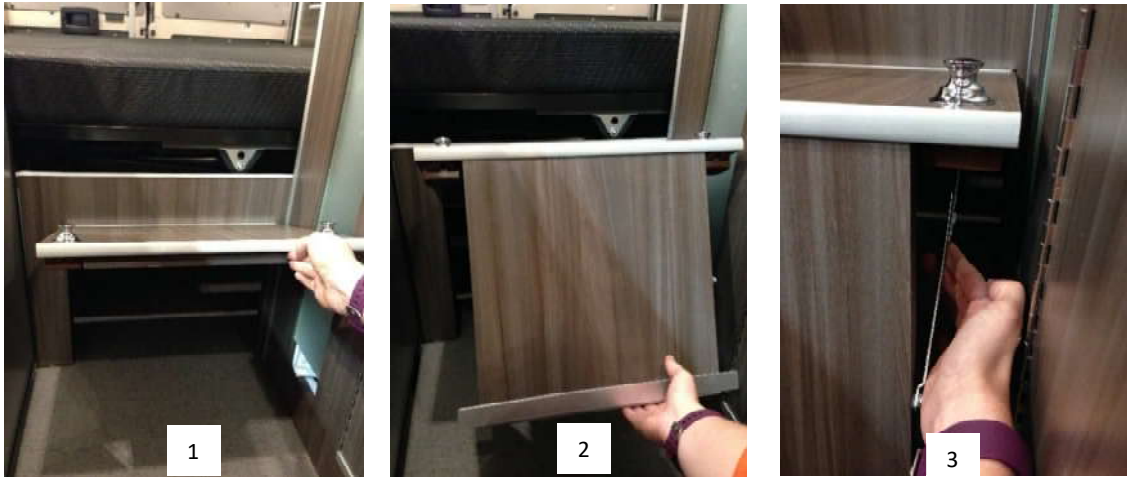
To lower adjustable bed, press and hold bottom of either switch, and release at desired height.



Divider
PHOTO E-40



Bed access step
PHOTO E-41



Installation of step to access adjustable bed

PHOTO E-42



CAUTION: NEVER ADJUST A BED HOLDING A PERSON OR AN ANIMAL.



CAUTION: RESTRAINTS ARE IN PLACE TO PREVENT POSITIONING BED TOO LOW OR TOO HIGH. HOWEVER, IT IS IMPORTANT TO ENSURE THAT NO OBJECTS (ON BED OR IN CARGO AREA) INTERFERE WITH NORMAL BED MOVEMENT.



CAUTION: SHOULD OBJECTS INTERFERE WITH NORMAL BED MOVEMENT, IT IS THE RESPONSIBILITY OF OPERATOR TO STOP BED AT CORRECT HEIGHT.

Storage Area under Adjustable Bed

You can change available storage space by raising or lowering adjustable bed as required.

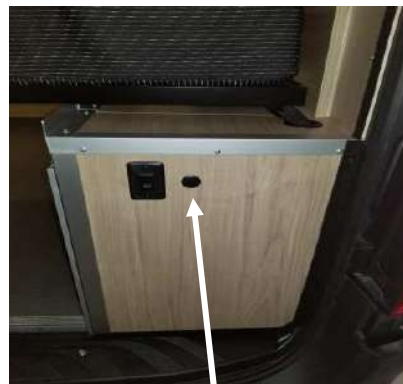
Adjustable bed also carries a light in cargo space. This light can be turned on by either of two switches. One is located at C pillar at the entrance on the left (PHOTO E-44). The other is located on right rear wall (PHOTO E-43).



Don't forget to turn off light under bed to avoid draining auxiliary batteries.



Cargo space light switch
PHOTO E-44



Cargo space light switch,
located at rear of vehicle
PHOTO E-43

Extra bed below adjustable bed (optional on XL FLEX)

To setup bed, raise adjustable bed high enough to allow installation of extra bed underneath. Position all four bed support boards on side storage under adjustable bed. Then place bed mattress on support boards.

To remove removable bed, apply installation steps above in reverse order.



CAUTION: RESTRAINTS ARE IN PLACE TO PREVENT POSITIONING BED TOO LOW OR TOO HIGH. HOWEVER, IT IS IMPORTANT TO ENSURE THAT NO OBJECTS (ON BED OR IN CARGO AREA) INTERFERE WITH NORMAL BED MOVEMENT.



CAUTION: SHOULD OBJECTS INTERFERE WITH NORMAL BED MOVEMENT, IT IS THE RESPONSIBILITY OF OPERATOR TO STOP BED AT CORRECT HEIGHT.

“U”-shaped Bench (optional on XL Plus and XL FLEX)

“U”-shaped bench also converts into bed (PHOTO E-45)



“U”-shaped bench

Bed Conversion

PHOTO E-45

Release straps holding backrests on each side. Take driver side backrest and lay it on floor between the two benches (PHOTO E-46). Then take passenger side backrest and position it between both benches as to cover passageway and form double bed (PHOTO E-47).



Lay backrest between seats
PHOTO E-46



Double bed
PHOTO E-47

Bench Conversion

Take centre cushion from bed and place it as backrest for bench on passenger side. Then take cushion from floor and place it as backrest for bench on driver side. Secure both backrests using straps provided.



CAUTION: NEVER DRIVE AWAY UNLESS BACKRESTS ARE SECURED USING SUPPLIED STRAPS.



CAUTION: NEVER DRIVE WITH PASSENGERS SEATED ON THE “U” SHAPED BENCH AS THERE ARE NO SAFETY BELTS.

Storage under “U”-shaped Bench

Storage in both side benches is accessible through its sliding panels.

Passenger side bench also includes a motor to raise bench cushion (PHOTO E-49) simply by pressing switch located at C pillar on passenger side (PHOTO E-48). This also provides access to storage area under bench. It is important to remove backrest before raising cushion.

Storage area under rear bench is accessible from inside by a pivoting panel (PHOTO E-50) or through rear doors.



Motor under bench
PHOTO E-49



Bench cushion switch
PHOTO E-48



Access to storage area under bench through pivoting and sliding panels
PHOTO E-50

Front Single Bed (optional)

To install front single bed, move both front seats as far back as possible. Set up portable table as half table between the two seats (see section “Portable Table”). Use shorter aluminum pedestal supplied with front bed (PHOTO E-52). Then set right side rectangular cushion on driver side window frame and on table in centre (PHOTO E-51). Repeat with “L”-shaped cushion on left side (PHOTO E-53).



Aluminum pedestal stored above cabin
PHOTO E-52



Table setup for front single bed
PHOTO E-51



Make sure cushions are well supported by window frames and centre table.



CAUTION: MAKE SURE BOTH DOORS ARE LOCKED, AS OPENING DOORS WHILE BED IS SET CAN CAUSE SERIOUS INJURY.



Front single bed (with curtains)
PHOTO E-53

Safety Belts and Anchor Loops for Child Seats on Rear Passenger Seats

The passenger seats and the bench bed have their own safety belts. When driving, all passengers must fasten their safety belts.

Passenger seats

To safely place a child seat on a passenger seat, use the safety belt (PHOTO E-55) and one of the available anchors on the back of the seat (PHOTO E-54).



PHOTO E-55



PHOTO E-54

Child Seat

To safely place a child seat on the bench bed, use the safety belt (PHOTO E-57), one or more of the available anchor loops coming through down between the seat cushion and the backrest and the black flat anchor located behind the backrest (PHOTO E-56).



PHOTO E-57



Flat anchor located

PHOTO E-56

Wardrobe

On LX and LDX versions, access to wardrobe is at end of counter at rear of vehicle (PHOTO E-59).

On XL Plus and XL FLEX versions, access to wardrobe is by opening the storage door under counter top and pulling to slide the wardrobe out (PHOTO E-58).



Wardrobe (LX and LDX)
PHOTO E-59



Wardrobe (XL PLUS and XL FLEX)
PHOTO E-58

Swivelling Seat

Privacy Curtains

Privacy curtains play the same role in RV as they do at home: provide privacy at night, and protection from daytime light and heat.

Curtains are of three types: mono plisse in windows, some on sliding tracks like divider and rear door curtains, and others with snap fasteners for windshield and fan which must be rolled up before driving away. To use mono plisse curtain, pull top down (PHOTO E-62).



Mono plisse curtain

PHOTO E-62



CAUTION: TO AVOID DAMAGING MONO PLISSE WHEN OPERATING FAN, MAKE SURE A WINDOW IS OPEN TO ALLOW AIR CIRCULATION.



CAUTION: HEAVY RAIN CAN DAMAGE MONO PLISSE IF WINDOW IS LEFT WIDE OPEN.



ATTENTION: NEVER DRIVE AWAY UNLESS ALL WINDOWS ARE FREE OF CURTAINS: CLOSED CURTAINS HAMPER VISIBILITY AND LACK OF VISION COULD CAUSE AN ACCIDENT.



CAUTION: NEVER USE STOVE WITH MONO PLISSE CURTAIN OVER SIDE WINDOW.

Diesel Heater

With a 7,950 BTU or 13,000 BTU capacity, diesel heating system provides for year-round use of RV.

First, turn front heater switch located on inverter control panel (PHOTO E-64/PHOTO E-63) to “ON” position. This switch can be left “ON” permanently.



Heater switch located on dome inverter control panel

PHOTO E-64



Front heater switch

PHOTO E-63

LX and LDX: **Then**, set thermostat switch, located on right at rear of vehicle to “ON” position (PHOTO E-65) to desired temperature. Comfort zone is located between 10 and 12 O’clock positions.

XL Plus and XL FLEX: **Then**, set thermostat switch, located at end of cabinet near the sliding door (PHOTO E-66/PHOTO E-67) to desired temperature. Comfort zone is located between 10 and 12 O'clock positions.



Thermostat switch
(located at rear on LX and LDX versions)
PHOTO E-65



Thermostat switch
(located on C pillar at entrance on
the left along with other controls,
XL Plus and XL Flex)
PHOTO E-67



Thermostat switch
(located on C pillar at entrance on
the left along with other controls,
XL Plus and XL Flex Go Van style)
PHOTO E-66

Diesel heating system runs continuously, or almost, temperature and fan speed depending on demand. Front heater switch must be in "ON" position for thermostat to function.

Note: Either control, thermostat or front switch, can shut down heater.



If possible, start diesel heater once a month to avoid emptying diesel supply line; should this happen, an error message may appear when starting heater.



ATTENTION: NEVER BLOCK HEATING SYSTEM AIR INTAKE.



CAUTION: NEVER BLOCK HOT AIR OUTLET INSIDE THE VEHICLE (PHOTO E-68/PHOTO E-69), OR DIRECT IT TOWARDS THE FLOOR OR A CABINET AS THE EXCESSIVE HEAT WILL CAUSE DAMAGE.



CAUTION: IF VEHICLE IS INSIDE A GARAGE, ALWAYS TURN “OFF” DIESEL HEATER USING EITHER FRONT SWITCH OR THERMOSTAT, BECAUSE SYSTEM GIVES OFF CARBON MONOXIDE (CO) WHICH CAN CAUSE FAINTING AND EVEN DEATH.



CAUTION: NEVER PARK RV OVER COMBUSTIBLE MATERIAL (GRASS, WEEDS), AS FURNACE EXHAUST CAN START A FIRE: THEY CAN TOUCH HOT PARTS OF HEATING SYSTEM UNDER VEHICLE AND CATCH ON FIRE (PHOTO E-70).



CAUTION: NEVER BLOCK EXHAUST UNDER VEHICLE (PHOTO E-70). DURING WINTER, ALWAYS CHECK IF THE EXHAUST PIPE IS NOT OBSTRUCTED BY SNOW OR ICE BEFORE TURNING FURNACE ON.



Interior hot air outlet
PHOTO E-68



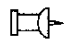
Interior hot air outlets
PHOTO E-69



Furnace exhaust outside vehicle
PHOTO E-70

TV with DVD Player (optional)

TV with DVD player manual is included in documentation provided. It is recommended you read and follow all use, maintenance and safety instructions contained in this manual. Keep manual in a safe place for future reference and pass it on to future users of TV with DVD player.

-  Before using TV, it is strongly recommended that you read manufacturer's Owner's Manual supplied when purchasing RV.

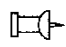
Unlocking TV from Cabinet

- 1- Open sliding panel of TV cabinet and remove TV retaining strap (PHOTO E-72/PHOTO E-71/PHOTO E-73).
- 2- Pull out TV and set in desired position.

Articulated extension allows watching TV from either rear or front of vehicle. It also lets you tilt screen for a better picture.

Securing TV Inside Cabinet

1. Store TV back inside cabinet.
2. Secure the TV retraining strap inside cabinet.
3. Once TV in position in cabinet, close sliding panel (PHOTO E-73).

-  It is important to properly set TV in cabinet before securing TV retaining strap to avoid breakage.



ATTENTION: NEVER DRIVE AWAY UNLESS TV IS STORED AND LOCKED.



TV secured in its storage
PHOTO E-72



Securing strap
PHOTO E-71



Slide door to close TV compartment
PHOTO E-73

Pop-up Roof with Top Bed (optional)

If your vehicle is equipped with the pop-up roof to add sleeping space for 2 more people, please read the following information.



PHOTO E-74

Raising the roof:

1. Pull out the ladder stored in the front overhead compartment, as it comes in 2 parts it needs to be assembled (PHOTO E-75).



PHOTO E-75



2.

3. Hook the ladder to its 2 securing points (PHOTO E-77) in the roof opening.



PHOTO E-76



PHOTO E-77

4. Separate the safety roof locks (PHOTO E-79/PHOTO E-78) left and right as you climb up on the first or second step as needed.
5. Unlock the main locks (PHOTO E-81) by turning each one of them on left and right half a turn as you climb on first or second step as needed. Pull on the ceiling handles (PHOTO E-80) to help in freeing the locks.



PHOTO E-79



PHOTO E-78



PHOTO E-81



PHOTO E-80



PHOTO E-83



PHOTO E-82

6. Open the vehicle sliding door to allow air coming in when you will raise the roof.
7. As you climb up the ladder, push upwards with both hands to raise the roof.
8. To reach the bed, use ladder. Lamp on a flexible neck (PHOTO E-84) is readily accessible in roof opening. Unzip canvas openings (PHOTO E-85) as needed.



PHOTO E-84



PHOTO E-85

Lowering the roof:

1. Close all windows of the canvas.
2. Open the vehicle sliding door to allow air to exit when you will lower the roof.

3. Using the 2 grips (PHOTO E-83), close the roof gently and check that the canvas folds onto itself while avoiding entangling it in the locks.
4. Place the canvas so that it frees the main locks, use the ceiling grips to help pull inward to engage the main locks left and right then turn them half a turn to lock.
5. Engage both left and right safety locks (PHOTO E-82).
6. Go outside to check if the canvas is not pinched between the rubber seal and the roof.

Disassemble the ladder and store it back in the overhead front compartment.

F. EXTERIOR

Variable Speed Roof Vent

 Read the supplied manufacturer's Owner's Manual before using the variable speed roof vent.

Basic Model

To use the ventilator:

1. Open the lid by cranking the big black X handle (PHOTO F-2.1).
2. Choose the type of ventilation desired ("IN/OUT") (PHOTO F-2.4).
3. Adjust the fan speed (PHOTO F-2.2).

Note: If the fan does not work anymore, check the 10-Amp fuse in the fuse panel (PHOTO C-3.2) and the 4 Amp fan fuse (PHOTO F-1).



1 2 3 4

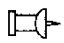
Roof vent
PHOTO F-2



Vent fuse
PHOTO F-1

Automatic Model with Remote Control (optional)

This automatic fan (optional) can be operated using the remote control and can shut down when it rains. For operating functions and advanced programming of automatic vent and remote control, refer to the manufacturer Owner's Manual.

 For this self-closing version with remote control, carefully read manufacturer's manual.

On remote control (PHOTO F-3), top button is used to turn vent on and off. Use arrows on left to adjust speed in manual mode, and arrows on right to adjust thermostat in automatic mode. When vent is on automatic, rotation speed is adjusted automatically, depending on selected temperature.

Use lower left button to open or close vent cover; use lower right button to choose fan direction ("IN/OUT").



Vent remote control
PHOTO F-3

Maxxfan Model with Remote Control (optional)

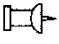
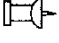
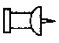
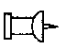
- Open vent using buttons on frame (PHOTO F-4) or use remote control (PHOTO F-5);
- Select the type of ventilation desired, using remote control;
- Set the desired temperature for the fan. The fan will start and stop depending on your settings of cabin temperature for your motorhome when you use AUTO mode (a green light will turn on);
- Knobs on frame can be used to control the fan;
- In automatic thermostatic mode, a green light will turn on. When outside temperature drops, it is possible that lid closes and the fan stops to keep motorhome warm as per remote control setting.



PHOTO F-4



PHOTO F-5

-  In case of rain, MaxxFan will not close automatically. Its design allows it to remain open in the rain and keep cabin rain free. However, in case of heavy rain and wind coming from the back of the Safari Condo, we recommend closing it or leaving it open with fan in “OUT” mode.
-  Before reversing fan rotation (“IN/OUT”), stop fan to avoid blowing fuse.
-  When leaving RV, always close roof vent (except self-closing version), or leave a two-inch (5 cm) gap with fan in “OUT” mode, to avoid most rain damage.
-  Never drive away unless roof vent cover is closed.

Vent Maintenance

It is important to lubricate exterior vent switch (PHOTO F-6) once a year. This prevents dust and moisture from obstructing proper operation. Use of lubricant such as *ProLab PL100* is recommended.

Also, it is important to check vent gasket and other equipment on roof (solar panels, TV antenna, etc.). (PHOTO F-7) at least once a year to avoid the risk of water infiltration harmful to RV interior. If gasket looks dried out or cracked, it should be fixed. For more details on gasket repairs, see *G. Troubleshooting and Maintenance*.



Exterior vent switch
PHOTO F-6



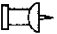

Vent gasket
PHOTO F-7

-  Check vent gasket and lubricate vent external switch at least once a year.

Air Conditioner (optional)

Air conditioner is installed on roof. To operate, breaker 4 must be in “ON” position (see Fuse panel (PHOTO C-3.1)).

There are two control buttons on air conditioner: one for air circulation, one for air conditioning (PHOTO F-8). Circulation switch has five positions: “off”, “low air” for light ventilation, “high air” for more ventilation, “low cool” for light cooling and “high cool” for more cooling. Thermostat button controls air conditioning temperature (blue indicates level of coolness) (PHOTO F-8). Two grey rotating buttons are used to control airflow (PHOTO F-9).

-  Do not block air intakes located on each side of air conditioner.
-  Since inverter does not provide sufficient power, RV must be connected to external power supply to run air conditioner.



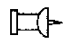
Circulation switch and thermostat
PHOTO F-8



Air output controls
PHOTO F-9




Control buttons on another type of air conditioner
PHOTO F-10

 Depending on use, filter maintenance is required at least once a year. For more information on filter maintenance, see manufacturer's instructions.

Side Door Screen

Side door sliding screen is a permanent plisse installation (PHOTO F-11).

 **ATTENTION:** DOOR SCREEN MUST BE STOWED BEFORE CLOSING SLIDING DOOR.

Rear Screen

Rear screen (PHOTO F-12) is designed for protection from insects while sleeping with open doors, all the while masking luggage located under rear seat.

To install screen, start by pressing both snaps top centre, then down each side. To disassemble, carry out operations in reverse order.

Zipper provides access to door handle in an emergency or to your clothes inside when using exterior shower. Snaps at bottom of screen allow folding up for unrestricted access to storage under rear seat.



PHOTO F-11



PHOTO F-12

Awning



ATTENTION: ALWAYS CLOSE SLIDING DOOR BEFORE OPENING AWNING.

Opening

1. Use crank stored in back door.
2. Close all RV doors, and using crank (PHOTO F-13.1), unfurl awning about 1, 50 m (60") (PHOTO F-13.2), or by using the switch on B pillar by the passenger door if you have an electric awning.
3. Loosen vertical support handles (PHOTO F-15); pull out vertical supports from open side of awning.
4. Extend vertical supports and tighten using handle (PHOTO F-14).
5. Spread out supports and set outwards at an angle (PHOTO F-19) and resume opening of awning until supports are vertical (PHOTO F-18).
6. Again, set supports outwards at an angle as in step 5, and repeat until awning is fully unfurled.
7. Pull taut.
8. Remove central support (optional) from rear door or under bed and insert in centre against awning housing (PHOTO F-17/PHOTO F-16).
9. Lastly, anchor vertical supports at base using included tent hooks.



Awning opening and closing
PHOTO F-13



Vertical support knobs
PHOTO F-14



Vertical supports
PHOTO F-15



Central support
PHOTO F-17



Central support
PHOTO F-16

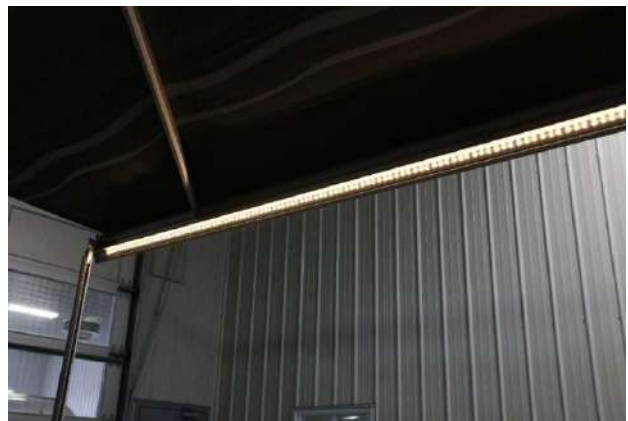


Vertical supports at an angle
PHOTO F-19



Supports are vertical
PHOTO F-18

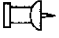
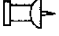
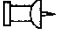
Optional LED lights can be installed in mobile awning front (PHOTO F-20). Light switch is at end of cabinet near sliding door, with various other controls (PHOTO A-1).



LED lights in mobile front of awning (optional)
PHOTO F-20

For added safety, you can use retaining straps between ground and awning (optional).

To clean awning, use *DAKI* or other household products.

-  Once awning is open, keep taut at all times.
-  Always anchor awning vertical supports at base.
-  In case of rain, slope awning for drainage (PHOTO F-21) by lowering rear vertical support using butterfly screw located in centre of support. In windy conditions, close awning.



Awning sloped towards rear
PHOTO F-21



ATTENTION: ALWAYS CLOSE SLIDING DOOR BEFORE CLOSING AWNING.

Closing:

To close awning, simply reverse opening operations until about 1, 50 m (60") of awning is unfurled (PHOTO F-13.2).

1. Replace vertical supports (PHOTO F-15) in mobile front of awning.
2. Tighten butterfly screw of the two posts (PHOTO F-14).
3. Complete awning closure.
4. Store crank and horizontal support back to their storage area.



For additional information, refer to Owner's Manual.

Sliding Step

Sliding step provides a wider and safer footing when stepping in and out of RV sliding door.

To slide out step, pull both handles under step (PHOTO F-22) while pulling step.

To store step, while tightening both handles simply push it inward until you hear a "click."



ATTENTION: NEVER DRIVE AWAY UNLESS STEP IS STORED AND SECURED.

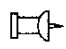
ELECTRICAL STEP OPTIONAL: THE STEP WILL SLIDE OUT WHEN THE ENGINE STOPS AND WILL SLIDE BACK IN WHEN THE ENGINE IS STARTED.

NOTE: IN WINTER, DISABLE THE ELECTRICAL STEP USING THE INTERIOR SWITCH IN THE DRIVER SEAT BASE NEAR THE 12-VOLT OUTLET.



Handles under sliding step
PHOTO F-22

Class III Trailer Hitch (standard)

-  Before using trailer hitch, it is recommended you read operating manual supplied with unit or trailer as well as “Towing” section in vehicle manufacturer’s Owner’s Manual.

Trailer wiring harness with 7-prong electrical plug (PHOTO F-23) is located on the trailer hitch itself.



7-prong trailer plug on trailer hitch
PHOTO F-23

Bike Rack (optional)

-  Before using bike rack, read supplied manufacturer’s Owner’s Manual.

Place bike rack in hitch receiver and check that pin is properly attached. Always carefully secure bikes using safety straps.



ATTENTION: TO PREVENT LOSS OR DAMAGE OF PIN AND STABILIZER, CHECK THAT ALL ARE WELL SECURED BEFORE DRIVING AWAY.

G. TROUBLESHOOTING/MAINTENANCE

Gasket Check

Over the years and through sun's action, joints between roof and mounted equipment (fan, solar panels, etc.) become dry and will crack sooner or later.

It is very important to check roof gaskets annually and to proceed with any necessary repair or to have them replaced as required (PHOTO G-1). Otherwise, significant damage may result from any water infiltration.

If a gasket is cracked or peels off, it is strongly recommended to schedule an appointment for any repairs. To DIY, remove defective part of gasket, clean surface with paint thinner or methyl alcohol and replace faulty joint using *Adseal*. Never use silicone, because it will be impossible to remove later. Use white, black or clear *Adseal*, depending on colour of vehicle. These products are available in any good hardware store.



Roof vent gasket
PHOTO G-1

Hot Water System Leaks

15 L Propane Water Heater

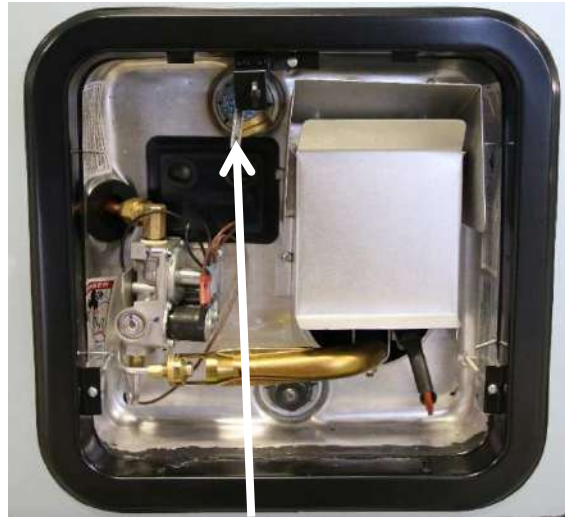


Close water heater using switch near control panel (PHOTO D-6).

In case of leakage of water heater itself or hot water plumbing system, empty the water heater (see "Winterizing Plumbing System with 15 Litre Propane Water heater", section H. Winterizing). Once water heater is empty, close drain valve (PHOTO G-2) and safety valve (PHOTO G-3); then set lower winterizing valve upright and leave top valve in horizontal position (PHOTO G-4). Once valve is closed, don't use hot water tap. Then restart pump and use cold water: hot water system is isolated and no longer operational.



Drain valve
PHOTO G-2



Safety valve
PHOTO G-3



Winterizing valves
(propane water heater)
PHOTO G-4

Aquago Propane Instant Water Heater (optional)

☞ Close water heater using control knob (PHOTO A-1).

In case of leakage of water heater itself or hot water plumbing, empty water heater (see “Complete Plumbing System Winterizing with *Aquago* Propane Instant Water Heater” section *H. Winterizing*). Once water heater is empty, close toggle lever in exterior door (PHOTO H-1); then set lower winterizing valve upright and leave top valve in horizontal position (PHOTO G-5). Once valve is closed, don’t use hot water tap. Then restart pump and use cold water: hot water system is isolated and no longer operational.



Winterizing valves (with
Aquago water heater)

PHOTO G-5

Toilet Leaks

It is possible to cut water supply to permanent or cassette toilet. Valve is located in cabinet under sink (LX LDX and XL Plus) (PHOTO G-7) or under corner sink in shower (XL FLEX) (PHOTO G-6).



Water supply valve

PHOTO G-7



Water supply valve

PHOTO G-6

Repairs

Microwave Oven

Before remove microwave oven for repairs, follow these steps:

1. Unplug appliance from outlet located in cabinet under or behind microwave oven.
2. Open cabinet above microwave oven.
3. Remove all 4 screws above or under microwave oven.
4. Carefully remove microwave oven, gently leading the power cord through.

Fridge

Should fridge require repairs, consult manufacturer's Owner's Manual for listing of authorized Service centres.

Additional Information

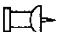
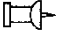
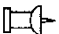
For additional up-to-date information on maintenance of vehicle and equipment, see Safari Condo website at www.safaricondo.com under "My Safari Condo" tab in "Annual Maintenance: Tips" subsection.

Warranty

See warranty insert attached to manual.

H. WINTERIZING

Winter Maintenance

-  Never let more than 46 cm (18 inches) of snow accumulate on roof.
-  It is mandatory to winterize plumbing as soon as temperature drops below freezing at night.
-  Make sure pump switch is "OFF" position. Indicator light will be out.

Winterizing Plumbing System with 15 Litre Propane Water Heater

1. Set water heater switch (PHOTO D-6) located near control panel on upper cabinet near sliding door to "OFF" position.
2. Switch off water pump using "PUMP" switch ((PHOTO A-8) located on control panel. Indicator light must be out.
3. Before draining potable water tank, position RV so it leans to the rear.
4. Drain potable water tank using drain valve (PHOTO D-4) located under vehicle behind rear wheel on driver side.
5. Drain water heater using drain valve inside water heater compartment located in right rear corner of vehicle (PHOTO D-7.1) while opening hot water tap to ease drainage of complete system, and opening exterior safety valve (PHOTO D-8) (see "Start-up and Disinfecting of Potable Water System with 15 L Propane Water Heater", section D. Water).
6. When water no longer runs off under RV, shut tap, exterior water heater safety valve, fresh water tank drain valve (PHOTO D-4), water heater draining valve (PHOTO D-7.1) and bypass valves located on water heater pipes (PHOTO D-7.2).

Note: Bypass valves must be in vertical position for winterizing. *Mnemonic mechanism: winterISE = raise valve to vertical position.*

7. Pour 16 litres (4 US gals) of -50 °C RV antifreeze in potable water tank.
8. Turn on water pump using "PUMP" switch (PHOTO A-8) on control panel. Indicator light should be on.
9. Open cold water tap until antifreeze reaches sink, let it run for 20 seconds.

10. Open hot water tap until antifreeze reaches sink, let it run for 20 seconds.
11. *Cassette toilet: If vehicle is equipped with cassette toilet connected to plumbing system, let antifreeze run for at least 20 seconds before emptying cassette.
12. *Permanent toilet: Let antifreeze run for about 20 seconds using toilet hand lever (PHOTO D-28). If equipped with hand spray (PHOTO D-27), let antifreeze run out for a few seconds as well.
13. If equipped with rear hand shower and/or interior shower, turn on shower cold water until antifreeze runs for 15 seconds and then turn on hot water until antifreeze runs for at least 15 seconds.
14. Shut off water pump using "PUMP" switch (PHOTO A-8) on control panel. Indicator light must be out.
15. Drain holding tanks (see "Dumping of Holding Tanks", section *D. Water*).

*Come Spring, see "Start-up and Disinfecting of Potable Water System with 15 L Propane Water Heater", section *D. Water*.



Make sure pump switch is "OFF" position. Indicator light will be out.

Partial Plumbing System Winterizing with Aquago Propane Instant Water Heater



CAUTION: YOUR TRUMA *AQUAGO* WATER HEATER IS A VERY POWERFUL DEVICE BUT THAT RUNS A MUCH GREATER RISK OF FREEZING BECAUSE IT DOES NOT HAVE THIS BIG 15-LITRE TANK WHICH WILL BE LAST TO FREEZE IN COLD WEATHER. EVEN IF YOU DO NOT COMPLETELY WINTERIZE VEHICLE, CONSIDER WINTERIZING *AQUAGO* WATER HEATER AS SOON AS TEMPERATURES BELOW FREEZING POINT ARE FORECAST.

Procedure to partially winterize plumbing system with *Aquago* water heater is simple and fast. This procedure only ensures winterization of *Aquago* instant water heater and only protects the latter from freezing. After this partial winterization, it is still possible to temporarily "de-winterize" system for a few days of camping in cooler weather (see "Re-use of *Aquago* Instant Water Heater during Light Freeze" section *H. Winterizing*).

1. Set water heater switch (PHOTO D-6) located near control panel on upper cabinet near sliding door to "OFF" position.
2. Switch off water pump using "PUMP" switch (PHOTO A-8) located near control panel on upper cabinet near sliding door. Indicator light must be out.
3. DANGER: To avoid splashing at step 5, open hot water tap to remove any residual pressure in pipes.
4. At rear of water heater compartment, put A and B bypass valves in winter position (PHOTO D-9), which is vertical, and close return line E valve (turn 90 degree from return line) (PHOTO D-10).
5. Open exterior heater access door, trigger toggle lever (PHOTO H-1) and maintain in horizontal position until water stops flowing (about 2 minutes).
6. Remove the cartridge filter located inside the toggle lever and store it inside the vehicle until the next start-up of the plumbing system. (PHOTO H-2)
7. Close toggle lever (PHOTO H-1) and shut access door. Your heater is now protected from

freezing but **NOT** the rest of the plumbing system.



Cartridge filter
PHOTO H-2



Toggle lever
PHOTO H-1

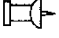
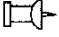
Complete Plumbing System Winterizing with Aquago Propane Instant Water Heater

For complete winterizing of vehicle, complete steps 1 to 7 above, then proceed with the following operations:

8. Switch off water pump using "PUMP" switch (PHOTO A-8) located on control panel. Indicator light must be out.
9. Before draining potable water tank, position RV so it leans to the rear.
10. Drain potable water tank and plumbing system using drain valve (PHOTO D-3) located under vehicle behind rear wheel on driver side.
11. Pour 16 litres (4 US gals) of -50 °C RV antifreeze in potable water tank.
12. Turn on water pump using "PUMP" switch (PHOTO A-8) on control panel. Indicator light should be on.
13. Open cold water tap until antifreeze reaches sink, let it run for 20 seconds.
14. Open hot water tap until antifreeze reaches sink, let it run for 20 seconds.
15. *Cassette toilet: If vehicle is equipped with cassette toilet connected to plumbing system, let antifreeze run for at least 20 seconds before emptying cassette (PHOTO D-24.1).
16. *Permanent toilet: Let antifreeze run for about 20 seconds using toilet hand lever (PHOTO D-29). If equipped with hand spray (PHOTO D-28), let antifreeze run out for a few seconds as well.
17. If equipped with rear hand shower and/or interior shower, turn on shower cold water until antifreeze runs for 15 seconds and then turn on hot water until antifreeze runs for at least 15 seconds.
18. Open Aquago D valve (PHOTO D-11) until antifreeze runs off under vehicle; this fills return line with antifreeze.
19. Shut off water pump using "PUMP" switch (PHOTO A-8) on control panel. Indicator light must be out.
20. Switch "OFF" the water heater switch located behind the outside panel (PHOTO D-12).
21. Drain holding tanks (see "Dumping of Holding Tanks", section D. Water).

Winterized this way, it is impossible to use Aquago Instant Water Heater without a complete start-up and disinfection of potable water system (see section *D. Water*).

Re-use of the instant Aquago water heater in case of light freezing

-  It is possible to use again the instant Aquago water heater without having to proceed with the complete start up and disinfection of the water heater if only the seven (7) first steps of winterizing have been realized (partial winterizing).
-  If the instant Aquago water heater is used again in time of slight freezing, it is essential to use the “Simple temporary procedure to prevent freezing during RV use when temperatures below freezing point are forecast” (see section D. Water).

To use Aquago Instant Water Heater Following Partial Winterizing of Plumbing System

1. Insert the cartridge filter back inside the toggle lever located inside the exterior access door (PHOTO H-2)
2. Set bypass valves in horizontal (open) position (PHOTO D-9).
3. Open return line E valve (PHOTO D-10).
4. Set pump switch on control panel to “ON” position (PHOTO A-8).
5. Open D valve (PHOTO D-11) and run off about 2 litres (2 quarts) of water on ground under vehicle to fill water heater and return line, then close D valve.
6. Water heater can now be turned on and used.



CAUTION: THE TRUMA *AQUAGO* WATER HEATER IS HIGH PERFORMANCE EQUIPMENT, BUT MORE LIKELY TO FREEZE, BECAUSE IT DOESN'T HAVE THIS LARGE 15-LITRE WATER TANK THAT WILL BE LAST TO FREEZE IN COLD TEMPERATURES. EVEN THOUGH VEHICLE HAS NOT BEEN COMPLETELY WINTERIZED, IT IS RECOMMENDED TO WINTERIZE *AQUAGO* WATER HEATER AS SOON AS TEMPERATURES DIP UNDER THE FREEZING POINT.



CAUTION: IF USED AGAIN DURING LIGHT FREEZE, INSTANT WATER HEATER MUST REMAIN “ON” IN “ECO” MODE AS RECOMMENDED IN THE SIMPLE TEMPORARY PROCEDURE TO PREVENT FREEZING DURING RV USE WHEN TEMPERATURES BELOW FREEZING POINT ARE FORECAST (SEE *D. WATER*)

Winterizing Vehicle

Before storing vehicle, it is important to recharge auxiliary batteries to their full capacity by plugging vehicle into an external power source for at least 24 hours.

1. Remove 3 A fuse (No. 7) from electrical panel (PHOTO C-3.2). This cuts power to Propane and CO detectors
2. Remove AUX/TV 15 A fuse (No. 6) from electrical panel (PHOTO C-3.2). This cuts power to outlets & TV.
3. Remove roof vent 10 A fuse (No. 3) from electrical panel (PHOTO C-3.2). This cuts power to vent.
4. Shut off propane using valve (PHOTO E-5.3) in running board (PHOTO E-4/PHOTO E-3).
5. Make sure all lights are out, including under bed.
6. Turn inverter OFF at the control panel.



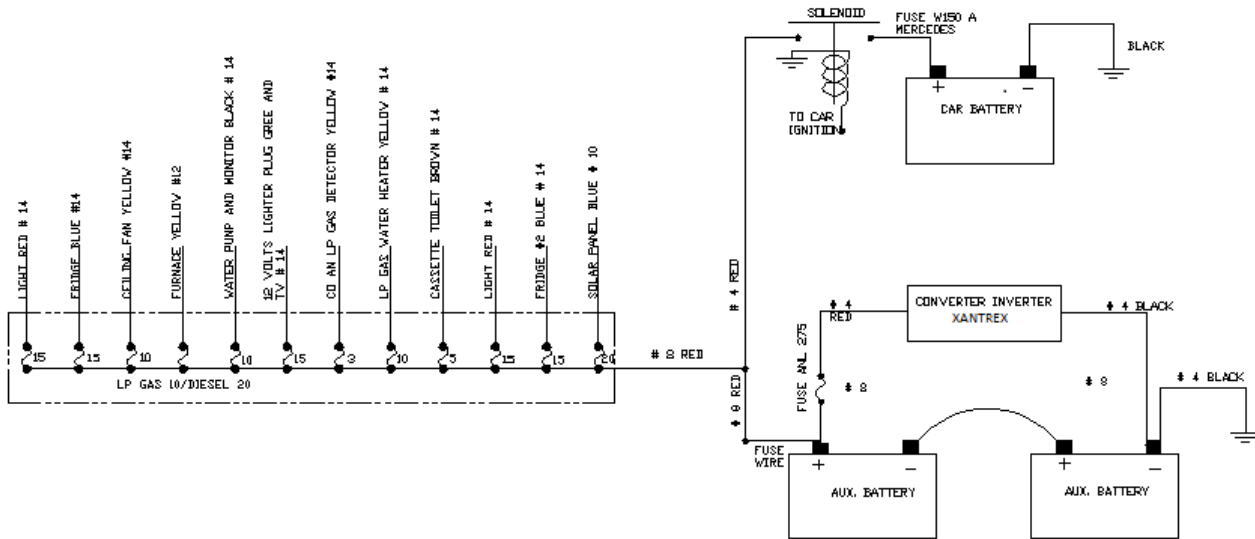
SAFARI CONDO
821, rue du Parc
Saint-Frédéric de Beauce
Québec, Canada
G0N 1P0

Phone: 418 426-3666
Fax: 418 426-1377
Website: www.safaricondo.com

Printed in Canada

Edition: 25 January 2021

ADDENDUM I – ELECTRICAL Diagram



12 VOLT DC ELECTRICAL DIAGRAM MODEL: SPRINTER

ADDENDUM II – INVERTER Diagram

