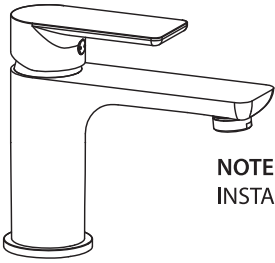


# triton

IGUAZU IG-100

## SPECIFICATIONS

### Single-Handle Lavatory Tap



**NOTE:** THIS FAUCET IS DESIGNED TO BE INSTALLED THROUGH 1 HOLE, 1-3/8" (35mm) MIN.

#### DESCRIPTION:

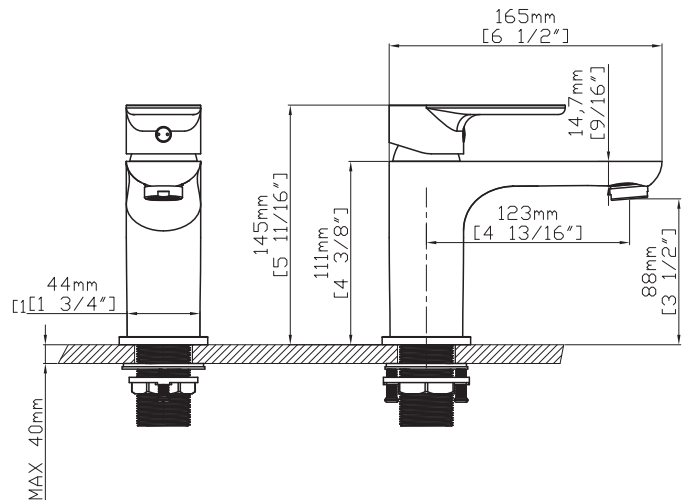
- Brass construction
- Flexible supply lines with 3/8" or 1/2" compression fittings
- Includes Red/Blue indicators

#### FLOW

- Water usage is limited to these maximum flow rates as indicated by the corresponding product markings
- 9L-12L/min @ 3bar

#### CARTRIDGE

- Ceramic disk cartridge

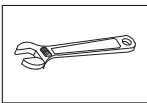


Note: Dimensions are for reference only.  
Detailed information is in accordance with the final product.

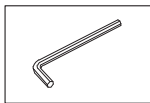
## SINGLE-HANDLE LAVATORY TAP INSTALLATION

### INSTALLATION MANUAL

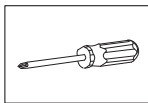
#### TOOLS YOU WILL NEED:



ADJUSTABLE  
WRENCH



HEXAGON  
WRENCH



PHILLIPS  
SCREWDRIVER

#### NOTES BEFORE INSTALLATION:

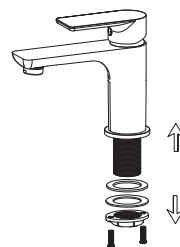
1. Please check all components are present.
2. Before installation ensure that all feed lines are clear of debris and on/off valve is present.
3. Ensure water pressure is between 0.1-8 BAR (includes combination of hot and cold feed lines).
4. Pictures in the manual are general in content and may not represent your purchased faucet exactly. If you are having difficulties, please contact a professional plumber.
5. If you will be away from home for an extended period you should shut off your main water supply.

#### DAILY MAINTENANCE:

1. Use a soft cloth and vinegar to remove hard-water spots.
2. Check aerator (if present) regularly for calcium build up when water stream is not optimum.
3. DO NOT use caustic cleaning products as the use will break down finish and void the product warranty.
4. Acceptable cleaners include vinegar or mild non-abrasive liquid detergents.
5. If the water pressure appears to be less than optimum remove, inspect, clean or replace aerator.

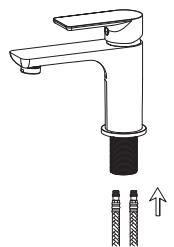
**1**

Remove the rubber washer, metal washer and locking nut from the faucet.



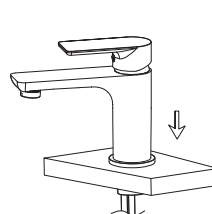
**2**

Screw and hand tighten the hot and cold flexible hoses to the faucet. DO NOT use a wrench to tighten hoses as this may damage the hose an/or the hose threads.



**3**

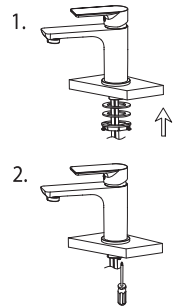
Install faucet through center hole.



**4**

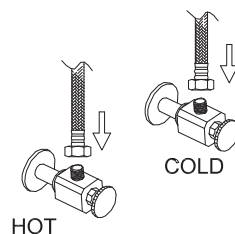
(1) Re-install the rubber washer followed by the metal washer and lock-nut.

(2) Hand tighten then tighten further using a screw driver to tighten lock-nut screws.



**5**

Attach flexible hose to water supply.



**6**

Remove the aerator and turn on faucet for 1-minute to flush debris from faucet and feed lines. Turn faucet off and re-install aerator.

