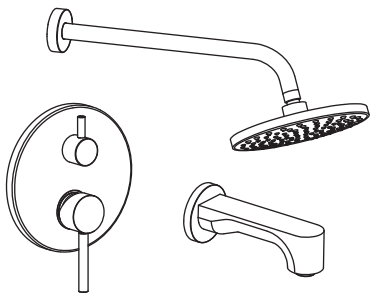


## Concealed Shower Set



### OPERATION

- Lever style handle with temperature indicator on the faceplate
- Handle operates upward through a 23° arc. The rotation angle of temperature is 100°. Maximum hot through 50° in clockwise direction. Minimum cold through 50° in counterclockwise.

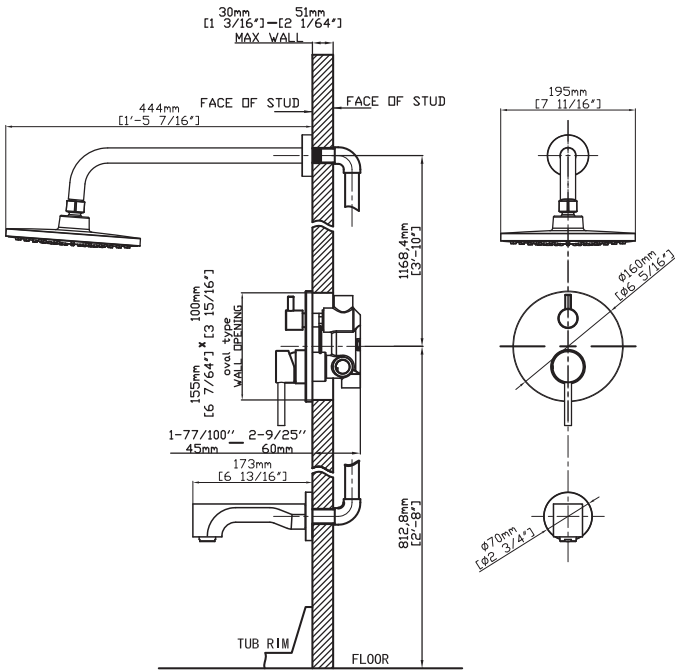
### FLOW

- Showerhead is limited to 9L/min at 3 Bar

### CARTRIDGE

- Ceramic disk cartridge

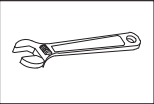
Note: Dimensions are for reference only.  
Detailed information is in accordance with the final product.



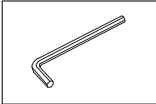
# CONCEALED SHOWER SET INSTALLATION

## INSTALLATION MANUAL

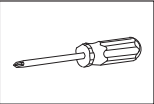
### TOOLS YOU WILL NEED:



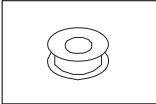
ADJUSTABLE  
WRENCH



HEXAGON  
WRENCH



PHILLIPS  
SCREWDRIVER

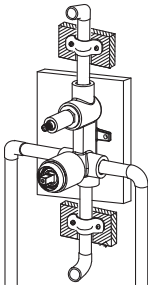


THREAD  
SEAL

### NOTES BEFORE INSTALLATION:

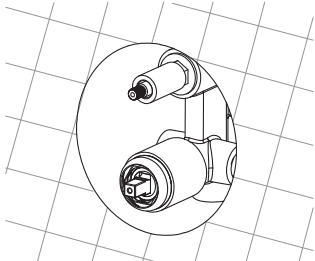
1. Please check all components are present.
2. Before installation ensure that all feed lines are clear of debris and on/off valve is present.
3. Ensure water pressure is between 0.1-8 BAR (includes combination of hot and cold feed lines).
4. Pictures in the manual are general in content and may not represent your purchased faucet exactly. If you are having difficulties, please contact a professional plumber.
5. If you will be away from home for an extended period you should shut off your main water supply.
6. Please ensure that to wash all water pipes before installation to insure no impurities are inside.
7. When welding the shower valve to the water pipe of the valve, take out the cartridge and any seal parts of the valve. After welding, wait for the body of the valve to cool down before installing the cartridge and seal parts.
8. Use the 11-13N.m power to lock the cartridge.

1



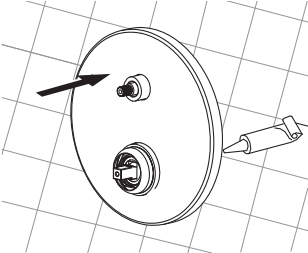
Connect the hot and cold inlet tube and outlet tube, then make sure the tube fix stable on the concrete wall.

2



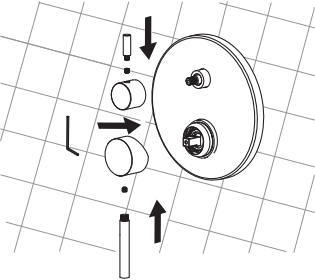
Please cut the size of the tile hole according to the size and shape of the protective cover (about 5mm bigger than the protective cover from each side). Put the tile outside the concrete wall (keep the same central point for the tile hole with the protective cover).

3



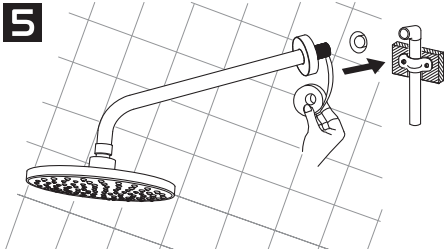
Install the waterproof cover to the N-box with glue, fix the steel plate, then install the handle levers.

4



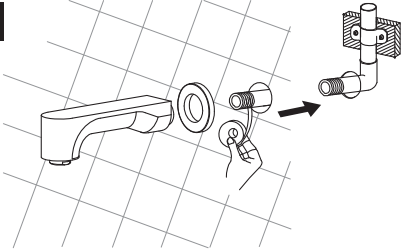
Put on the handle then tighten the screw.

5



Install the shower arm, shower head and flange to the fitting (stick to the wall). Tighten the shower head to the shower arm with the thread seal in a clockwise direction.

6



Wrap the thread of sprout with thread seal (ensure it must wrap clockwise). Screw-in to the inlet pipe inside the wall, then install the decorative cover on the wall.