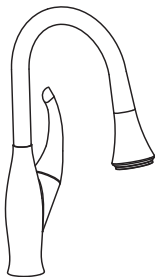




GULFOSS GF-300

SPECIFICATIONS

Pull Down Kitchen Mixer



NOTE: THIS TAP IS DESIGNED TO BE INSTALLED THROUGH 1 HOLE, 1-3/8" (35mm) MIN.

DESCRIPTION:

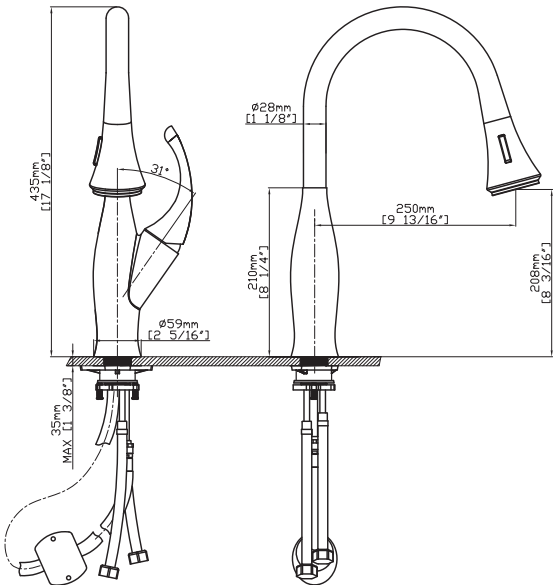
- Brass construction
- Flexible supply lines with 3/8" or 1/2" compression fittings
- Includes Red/Blue indicators

FLOW

- Water usage is limited to these maximum flow rates as indicated by the corresponding product markings
- 6L-9L/min @ 3bar

CARTRIDGE

- Ceramic disk cartridge

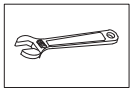


Note: Dimensions are for reference only. Detailed information is in accordance with the final product.

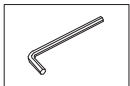
PULL DOWN KITCHEN MIXER INSTALLATION

INSTALLATION MANUAL

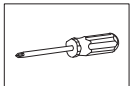
TOOLS YOU WILL NEED:



ADJUSTABLE WRENCH



HEXAGON WRENCH



PHILLIPS SCREWDRIVER

NOTES BEFORE INSTALLATION:

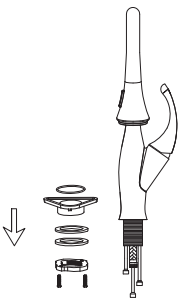
1. Please check all components are present.
2. Before installation ensure that all feed lines are clear of debris and on/off valve is present.
3. Ensure water pressure is between 0.1-8 BAR (includes combination of hot and cold feed lines).
4. Pictures in the manual are general in content and may not represent your purchased faucet exactly. If you are having difficulties, please contact a professional plumber.
5. If you will be away from home for an extended period you should shut off your main water supply.

DAILY MAINTENANCE:

1. Use a soft cloth and vinegar to remove hard-water spots.
2. Check aerator (if present) regularly for calcium build up when water stream is not optimum.
3. DO NOT use caustic cleaning products as the use will break down finish and void the product warranty.
4. Acceptable cleaners include vinegar or mild non-abrasive liquid detergents.
5. If the water pressure appears to be less than optimum remove, inspect, clean or replace aerator.

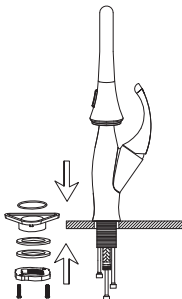
1

Remove locking-nut, metal and rubber washer and O-ring and white spacer and hose connector if installed



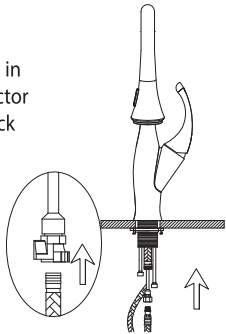
2

Install faucet through center hole, re-install O-ring and metal washer followed by the lock-nut. Re-install hose connector if removed insuring small rubber washer is also installed. Using a screwdriver, tighten the lock-nuts screws so that the faucet is secure and will not twist.



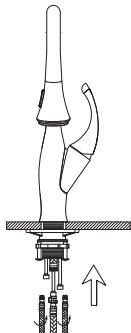
3

Push pull-out hose in to the hose connector until you hear a click sound.



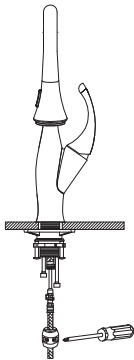
4

Screw and tighten the hot and cold flexible lines to the corresponding faucet connectors. Using a wrench ensure that the copper faucets lines are stable as you tighten the braided feed lines.



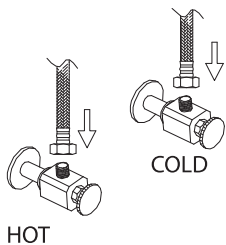
5

Proper installation of the hose weight kit will ensure that the spray head retracts smoothly. On the spray side of the hose, measure 15" down from the body of the faucet. Install the hose weight kit at this point. Pull out on the spray head. It should move easily and retract smoothly. Reposition the hose weight kit as necessary.



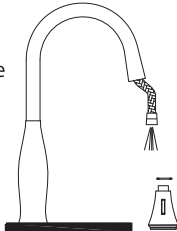
6

Attach flexible hose to water supply.



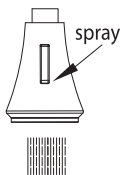
7

Hold on to the spray-head hose, unscrew spray head and remove it along with the rubber washer. Turn on the faucet to flush the hose and feed line for 1-minute to flush debris. Turn off faucet and re-install the rubber washer and spray head.



8

Turn the faucet on and press the top of the spray head button to change to spray.



9

Turn the faucet on and press the bottom of the spray head button to change to stream.

