



2021

Millage Impact Report

Washtenaw County Public Safety and Mental Health Preservation Millage





INTRODUCTION

Three years of new and enhanced programming.

The Washtenaw County Public Safety and Mental Health Preservation Millage has brought many new and enhanced programs to our community. This report illustrates what our agency, alongside our inspiring community partners, accomplished during the third year of millage funding.

- ✓ In 2018, WCCMH served 2,344 people. In 2021, the third year of our eight-year millage, **we served 4,366 people.**
- ✓ In 2021, our millage-funded CARES team, an expanded team of mental health professionals, **provided 13,092 services**—such as medication reviews, peer support services, and individual therapy—to 752 Washtenaw County residents.
- ✓ And in 2021, **we gave \$1.5 million to community partners** to help them provide critically important programs and services that improve community mental health through treatment, prevention, housing, and support.

In 2021, millage funding also allowed us to set the groundwork for systems change through new and expanded partnerships with our criminal justice and youth-focused sectors.

- ✓ Millage funding helped develop a new initiative to divert low-level, low-risk offenders away from jail and connect them with behavioral health services and other community resources.
- ✓ Millage funding supported a new initiative that seeks to transform our juvenile justice system, to support youth in their schools and communities, and to avoid detention and incarceration whenever possible.

We are proud to present our latest millage impact report that highlights continuing programs and new initiatives that are touching the lives of so many in our community.

Thank you, Washtenaw County residents, for supporting the county's Public Safety and Mental



2021 SERVICES AND INITIATIVES

IMPACT



Criminal Justice

With millage resources, Washtenaw County is funding criminal justice diversion, reentry, and evidence-based jail services.

Reentry initiatives help reduce the likelihood of low-level, low-risk offenders returning to jail—allowing more families to stay together and, ultimately, saving taxpayers money. Diversion efforts help move people with behavioral health needs away from places like jails, detention centers, emergency rooms, and shelters—so that they can be better connected to community-based care.



WATCH: Collaborating to break the cycle of jail:
Washtenaw County Public Safety and Mental Health Millage



Reentry Services

FOR SUPPORTING COMMUNITY REENTRY

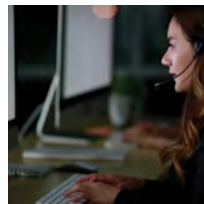
To address high recidivism rates among individuals with mental health and substance use disorders, the millage provides funding for enhanced reentry services. Services may include case management, employment assistance, housing assistance, and more. In 2021, the reentry service team assisted roughly 400 individuals.



Youth Assessment Center

FOR SUPPORTING YOUTH NEEDS

Youth Assessment Centers operate as a safe holding place for youth and a gateway for professional assessment, prevention, diversion, and rehabilitation. In 2021, a \$20,650 millage grant paid for technical assistance from the National Assessment Center (NAC) Association to help Washtenaw County leaders begin to develop a youth assessment center.



Crisis Negotiation Team

FOR ASSISTING PEOPLE IN CRISIS

Thanks to millage funding, the Washtenaw County Sheriff's Office Crisis Negotiation Team is now equipped with mental health professionals. In 2021, five millage-funded staff served as members of the team, helping police peacefully resolve crisis situations. They completed 304 hours of training and helped deescalate 12 situations.



Medication-Assisted Treatment

FOR HELPING PEOPLE RECOVER

Medication-assisted treatment (MAT)—the use of medication to treat substance use disorders—can successfully treat opioid use disorder. MAT is used to sustain recovery and prevent overdose. In 2021, the millage increased funding for medication-assisted treatment in the county jail. The jail's MAT program supported 40 people in 2021.



Service Expansion

The millage supports crisis services and other behavioral health interventions for those in need.

Services provided with millage funding include crisis response, individual therapy, group therapy, peer support, psychiatry, nursing, and help navigating required medical, behavioral, and social services.

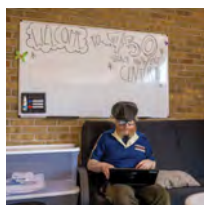


WATCH: Expanding services to support everyone:
Washtenaw County Public Safety and Mental Health Millage



CARES Team *FOR SUPPORTING EVERYONE*

The millage-funded CARES Team is an interdisciplinary team of mental health professionals that includes nurses, social workers, crisis professionals, psychiatrists, addiction specialists, peer counselors, and medical assistants. The team helps any person—regardless of age, insurance status, or ability pay—who requires mental health intervention and follow up support. In 2021 alone, the CARES team provided 13,092 services to 752 patients.



24/7 Crisis Center *FOR CREATING A SAFE SPACE*

750 Towner, a 24/7 crisis center established with millage funding, is a place where individuals experiencing a behavioral health crisis can go for help and emotional support. The center can be used as a holistic alternative to the emergency room or the jail, helping stabilize individuals in crisis and providing them with a warm handoff to other community providers. In 2021, the crisis center handled 45 admissions and served 25 people in need of help and stabilization.



Certification *FOR MAXIMIZING MILLAGE FUNDING*

WCCMH is now designated as a Certified Community Behavioral Health Clinic and provides a comprehensive range of mental health and substance use services. By achieving this certification, WCCMH has received additional federal grant funding to hire staff and provide services. These extra funds allow WCCMH to serve more individuals and maximize the reach of millage dollars.



Youth Supports

The millage provides resources that support the mental health needs of our youth.

There is a growing need to support youth who have experienced trauma or have unmet behavioral health needs. Millage funding supports initiatives that reach students within their schools. Many initiatives focus on destigmatizing mental health and empowering youth.



WATCH: Supporting and empowering our youth:
Washtenaw County Public Safety and Mental Health Millage



#WishYouKnew

FOR STARTING THE CONVERSATION

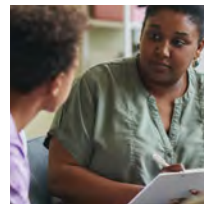
The Washtenaw County Health Department's #WishYouKnew campaign receives significant funding from the mental health millage. In 2021 alone, millage dollars enabled a substantial increase in #WishYouKnew's campaign reach. With millage funding, the campaign began to connect with youth through Spotify and Comcast—with 132,486 and 60,576 plays respectively.



Mini Grants

FOR SHOWING STUDENTS THEY'RE NOT ALONE

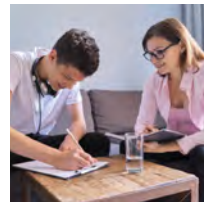
In 2021, the millage continued to provide mini grants to schools across Washtenaw County to support a variety of school-based programs designed to promote help-seeking behavior, reduce stigma, and make sure that students and families are aware of the county's 24/7 access number. In 2021, 24 schools received grants of up to \$5,000 each.



Children's Services

FOR HELPING KIDS AND FAMILIES

Millage dollars are used to fuel a partnership between Washtenaw County Community Mental Health and Washtenaw County Children's Services—a county facility that provides temporary custody and care for juveniles who have come into contact with the justice system. Millage-funded social workers are now embedded in Children's Services and use trauma-informed treatment to help youth while referring them to additional care in the community.



Millage-funded school social workers

FOR SHOWING STUDENTS THEY MATTER

Millage matching dollars enabled WISD schools to receive a grant from the State of Michigan to hire mental health professionals—including licensed or limited-license social workers, counselors, and nurses, as well as psychiatrists, psychologists, and others—to work with general education students. Four behavioral health professionals are now serving high-need schools in Milan, Ypsilanti, Saline, and Lincoln, providing services to many students.



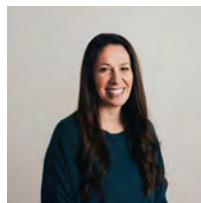
Prevention and Education

Prevention and education are essential for improving and maintaining the health and wellness of our community.

These initiatives tackle root causes and upstream issues, which ultimately reduce costs and prevent adverse health outcomes by reaching those in need early. The millage educates community members about how to recognize and respond to mental health crises and needs, and destigmatizes reaching out for help.



WATCH: It takes a millage: Washtenaw County Public Safety and Mental Health Millage



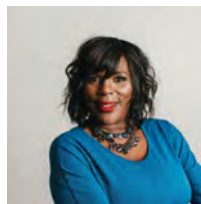
Mental Health First Aid *FOR TRAINING ON MENTAL HEALTH*

In 2021, millage funds were used to train local residents to become Mental Health First Aid instructors that could now train others in our community—an approach called Train the Trainer. Mental Health First Aid (MHFA) is a skills-based course that teaches the risk factors and warning signs for mental health and substance use concerns, while providing guidance on ways to help.



Hospital collaboration *FOR DECREASING HOSPITAL STAYS*

Thanks to the millage, when people in a mental health crisis come to the emergency department, the millage-funded CARES team connects them with a therapist and case management. Washtenaw County Community Mental Health (WCCMH) data shows a decline in mental health hospitalizations since this program was implemented.



Black Lives Matter Task Force *FOR CREATING CONVERSATION AND CHANGE*

In 2021, the Black Lives Matter task force hosted “chat and chews” with WCCMH staff during Black History Month, as well as Critical Incident Stress Management (CISM) training. The group also sponsored community events—such as a youth essay writing contest, comedy show, documentary night, and faith-based events—focused on Black history, social justice, resilience, and self-care.



Housing

Lack of supportive and affordable housing creates challenges for many Washtenaw County residents.

The millage is helping community agencies across the county expand secure, supportive housing for those exiting jail and transitioning back into the community, as well as for those with mental health or substance use disorders.

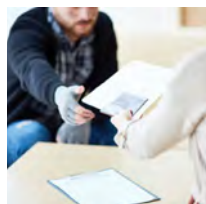


WATCH: A roof is the foundation for mental health:
Washtenaw County Public Safety and Mental Health Millage



Supportive Housing *FOR CREATING SAFE SPACES*

In 2021, millage funding expanded supportive housing services at Avalon Housing, Ozone House, The Shelter Association of Washtenaw County, and the Ypsilanti Housing Commission. Grants funded additional shelter beds, behavioral health and primary care services, and case management to ensure that clients receive the support they need to thrive in the community.



Homelessness Prevention Support *FOR PROTECTING OUR MOST VULNERABLE*

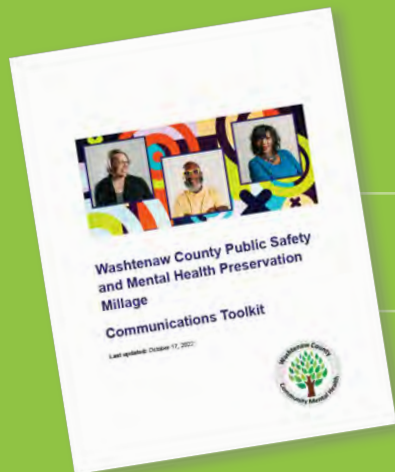
Washtenaw County Community Mental Health used millage funds to divert individuals from the county’s homeless system of care when possible. These funds provided food, utilities, transportation, and other measures to help people avoid homelessness. Through millage funding, the Shelter Association of Washtenaw County diverted 22 individuals away from homelessness in 2021.

Outreach Campaign

The millage’s public outreach campaign works to ensure that all of Washtenaw County’s residents know how to access mental health and substance use support, if and when they need it, while educating the community about how millage funds have been spent and the impact of those investments.

The ads—which showcase public servants in education, mental health, law enforcement, health, and housing—have been advertised on local billboards, buses, newspapers, magazines, and social channels to promote the county’s 24/7 mental health and substance use treatment hotline.

The millage communications toolkit, which was developed from dozens of conversations with health and human service agency leaders and front-line staff members, provides key facts about the millage, simplified service descriptions, and sharable news stories and social media posts—all designed to promote millage-funded services.



[View the Millage Communications Toolkit >](#)





Partnerships

Millage leaders believe in collective action.

With this in mind, millage dollars are frequently distributed to community partners working in one or more of the millage’s funding priorities: service expansion, criminal justice diversion, youth support, and prevention and education.



5 Healthy Towns Foundation

In 2019, 5 Healthy Towns received funding to address a local health issue. In partnership with local organizations, including Washtenaw County Community Mental Health, they are creating the vital conditions for mental health and helping identify health-related social needs.



Avalon Housing

Millage-funded staff at Avalon Housing provide case management, helping residents get and stay healthy—both physically and mentally—through an on-site clinic run by Packard Health. Staff also provide connections to behavioral health treatment providers, as needed.



Corner Health Center

Through a millage-funded partnership, the Corner Health Center now offers psychiatric services in-house, via two Washtenaw County Community Mental Health-affiliated providers. This partnership provides in-house treatment for youth and young adults.



OCED

The Office of Community and Economic Development (OCED) has worked with Washtenaw County Community Mental Health to target millage funds to areas of need. OCED created an RFP for supportive housing grants, and now oversees the work of the grantees.



Packard Health

Packard Health works closely with Washtenaw County Community Mental Health to coordinate the care of clients served by organizations. Packard clients now receive mental health care services on-site and can transition between organizations if their needs change.



NAMI Washtenaw

The National Alliance on Mental Illness (NAMI) Washtenaw County has used millage funding to conduct concerted outreach efforts in underserved areas of Washtenaw County—such as Whitmore Lake and Ypsilanti—to destigmatize mental health concerns.



Ozone House

Thanks to a millage partnership, psychiatry is being offered on-site at Ozone House. The millage funds time for a psychiatrist to be on-site every week for a half-day, allowing them to support Ozone House youth in need of mental health and substance use support services.



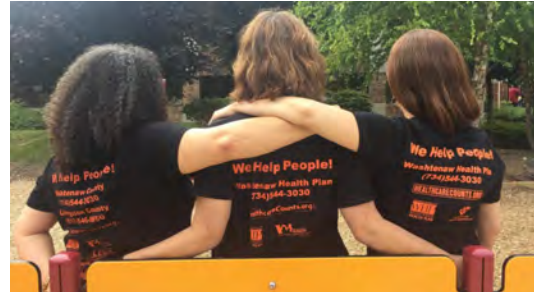
Shelter Association

The Shelter Association of Washtenaw County uses millage resources to add beds dedicated to clients who need immediate temporary housing. They also refer clients in need of behavioral health services to Washtenaw County Community Mental Health.



Student Advocacy Center

Check and Connect offers evidence-based mentoring to students involved with the juvenile justice system, students with mental health needs, or students who frequently miss school or struggle with grades. Millage funds support full-time mentors in Ypsilanti and Lincoln.



Washtenaw Health Plan

The Washtenaw Health Plan (WHP) works to expand access to health care by helping people sign up for health insurance. WHP navigators understand the Washtenaw County Community Mental Health system and can connect clients to behavioral health services when needed.



Ypsilanti Housing Commission

The millage has helped the Ypsilanti Housing Commission’s Family Empowerment Program earn supportive housing certification from the Corporation for Supportive Housing. Now, the millage funds supportive housing services for residents of New Parkridge in Ypsilanti.



Children’s Services

At Washtenaw County Children’s Services, the millage provided funding for a newly embedded staff member: a mental health professional. This new millage-funded case worker helps youth and their families connect with needed community resources.



WISD

Millage matching dollars enabled WISD schools to receive a grant from the State of Michigan to hire mental health professionals. Four behavioral health professionals now support WISD students, working to destigmatize mental health and reach kids early before issues escalate.

In Washtenaw County, dozens of organizations are dedicated to serving residents’ mental health needs and preserving the community’s public safety. With millage funding, partnerships are formed to help organizations develop a unified effort. In doing so, community-based organizations achieve far more together than they could individually.

By the Numbers

See how millage dollars are funding local initiatives and partnerships and learn about those being served.

- ✓ Expanded services
- ✓ 24/7 crisis center
- ✓ Youth supports
- ✓ Supportive housing
- ✓ Education and prevention
- ✓ Criminal justice diversion

In 2021

\$3,386,311

For service expansion

Service expansion funds allow WCCMH to provide 24/7 mental health and substance use support to more residents and geographic areas across Washtenaw County.

13,092

Services by CARES

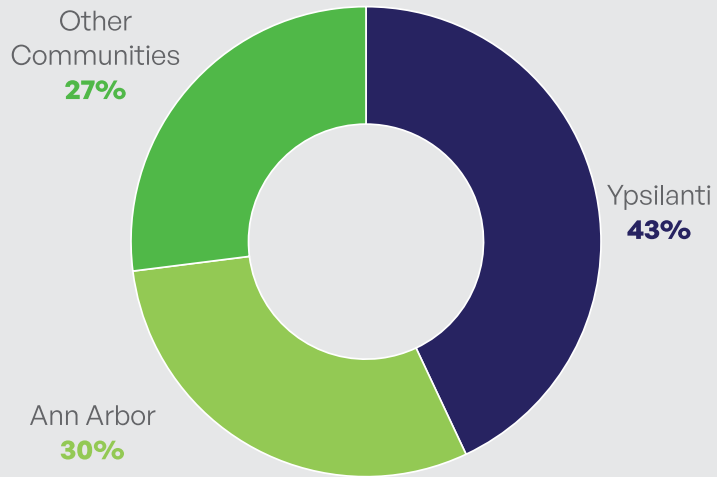
The millage-funded CARES team provides case management, medication reviews, nursing services, peer services, intake assessments, psychiatric evaluations, and more.

\$1,482,505

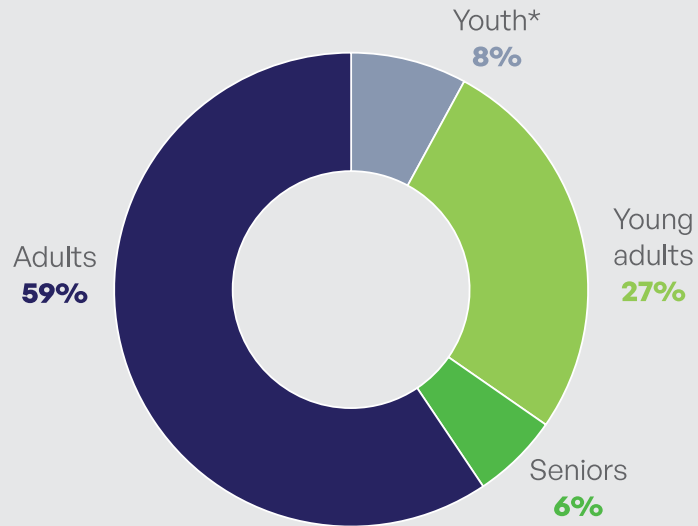
For community partners

Funds go to local organizations to improve mental health, combat substance abuse, reduce stigma, expand supportive housing, and support students.

2021: GEOGRAPHIC LOCATION OF CARES CLIENTS



2021: AGE OF CARES CLIENTS

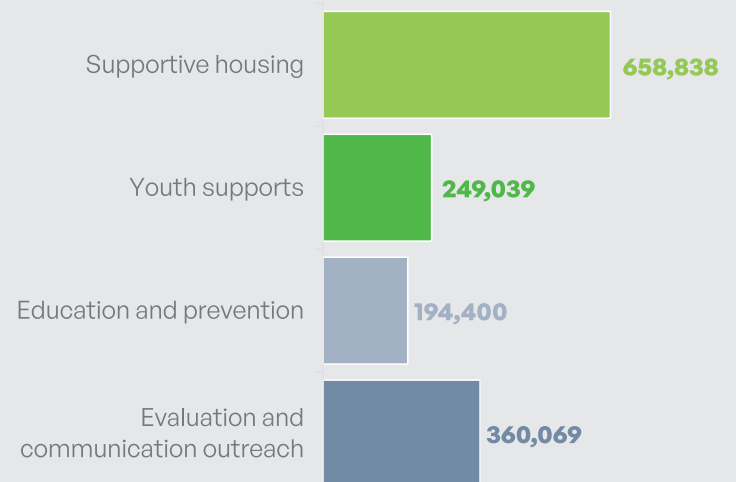


* This does not include students served by millage-funded partners, such as the Washtenaw Intermediate School District, the Corner Health Center, Ozone House, etc.

2021: SERVICES PROVIDED

Service Category	Number of services
Case management	6,700
History and exam	1,404
Peer support	1,235
CCBHC services	951
Nursing services	565
Other services	554
Specialty services	489
Psychiatric evaluations	357
Crisis intervention	287
Injections	243
Screening determination	176
Assertive community treatment	54
Supported employment	44
Psychiatric Services	31
Skill building services	2
Total	13,092

2021: INVESTMENT CATEGORIES



Financial Data

Community-wide service expansion: \$3,386,311

24/7 access/triage support	\$ 568,240
24/7 crisis support services	\$ 730,644
Treatment/stabilization services	\$ 875,004
24/7 crisis stabilization center	\$ 618,000
Service expansion - planning/implementation/administration	\$ 399,023

Supportive housing service expansion: \$685,383

Avalon Housing - permanent supportive housing	\$ 195,000
Avalon Housing - supportive services at new developments	\$ 183,010
Ozone House - Supportive services for teens and young adults	\$ 106,295
Youth Action Board	\$ 20
OCED Housing Administration	\$ 10,698
CoC - Homelessness diversion supports	\$ 15,000
Consumer emergency housing	\$ 38,104
Housing - planning/implementation/administration	\$ 137,256

Youth support service expansion: \$249,039

WISD - Anti-stigma mini-grants to area middle/high schools	\$ 29,450
WISD - mental health first aid training - youth services	\$ 17,569
Youth Center - on-site mental health professional	\$ 88,581
Washtenaw Health Plan	\$ 41,250
WCHD - Youth anti-stigma #wishyouknew campaign	\$ 7,000
Youth - planning/implementation/administration	\$ 65,189

Criminal justice diversion expansion planning: \$20,000

LEAD-D - law enforcement assisted diversion	\$ 10,000
Diversion - planning/implementation/administration	\$ 10,000

Education and prevention expansion: \$193,400

NAMI WC - Education and outreach in Ypsilanti/Whitmore Lk	\$158,400
MHIA training - adult services	\$ 25,000
Education/prevention - planning/implementation/administration	\$ 10,000
Education/prevention - health communications	\$ 71,483

Outreach and Evaluation: \$360,069

CHRT - System analysis	\$ 69,240
CHRT - Project management	\$ 100,305
CHRT - Communications	\$ 120,699
Evaluation - planning/implementation/administration	\$ 69,825

Since it first began funding programs and initiatives in 2019, the millage has helped Washtenaw County Community Mental Health meet the growing behavioral health needs of our community. From expanding staff and services to funding the work of community partners, millage funds make great things possible.

Advisory Committee

The Millage Advisory Committee provides strategic oversight and guidance on Public Safety and Mental Health Millage activities and investments.

In the spring of 2019, Washtenaw County Community Mental Health (WCCMH) established a Millage Advisory Committee, also known as the MAC, to assist with strategic decisions about millage priorities and funding.

The 13-member committee, chaired by Nancy Graebner-Sundling, is a subcommittee of the WCCMH Board and reports to the Washtenaw County Board of Commissioners.



Amanda Carlisle
Washtenaw Housing Alliance



Ricky Jefferson
WCCMH Board Representative



Ray Rion
Packard Health Representative



Holly Heaviland
Washtenaw Intermediate Schools



Bob King
WCCMH Board Representative



Marianne Udow-Phillips
WCCMH Board Representative



Barb Higman
NAMI Washtenaw



Andy LaBarre
WCCMH Board Representative



George Waddles, Jr.
Community Member and Pastor



Nancy Graebner-Sundling
CMH Board Representative



Derrick Jackson
Washtenaw County Sheriff's Office



John Martin
WCCMH Board Representative



Kari Walker
WCCMH Board Representative



Washtenaw County
Community Mental Health
555 Towner St
Ypsilanti, MI 48198

Art & Photography Credits:
Gary Horton
Avery Williamson
Heather Nash
William Watson

To access millage-funded services, call 1-734-544-3050

