

User Guide

DiverTM
Waterproof
MP3 Player



For Your Safety

Read this user guide carefully to ensure proper use of the product and to avoid any danger or physical damage.

- ❖ Please use your MP3 player properly in case of explosion, fire, electric shock, etc.
 1. Do not leave the player in a place subject to moisture or temperature higher than 35°C or lower than 5°C.
 2. Do not repair the player by yourself as it may cause damage.
 3. The MP3 player is waterproof (IPX-8 standard) and is suitable for continual submersion in water.
 4. Please back up important data onto your personal computer or hard drive to prevent data loss.
- ❖ When using your MP3 player, pay attention to your health, especially your ears and your sense of hearing.
 1. Do not use the earphones while driving or riding a bicycle.
 2. Avoid increasing the volume of the earphones while walking down the street as it may cause a traffic accident.
 3. Do not turn the volume up too high. Doctors warn against prolonged exposure to high volume.
 4. Stop using the device or turn down the volume if you have ringing in your ears.
 5. Always use the accessories provided by or approved by our company.

Accessories

1. Earphones



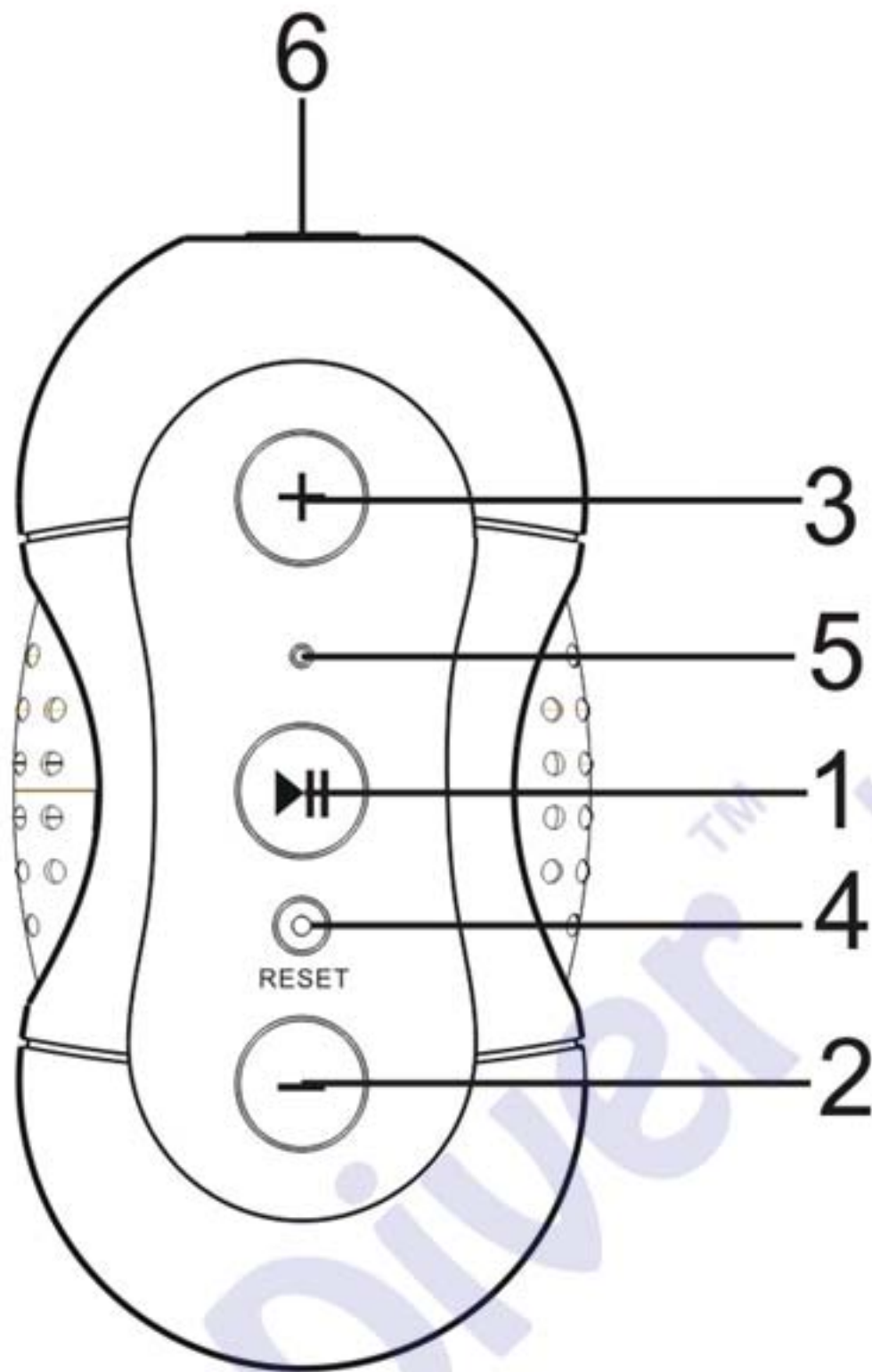
2. USB Cable



3. *Quick Start Guide*



Key Definition



1. **【▶||】** Power ON/OFF, Play/Pause
2. **【-】** Previous song / Volume down
3. **【+】** Next song / Volume up
4. RESET hole
5. Indicator light
6. USB interface / Earphone jack

Charging the Li-Polymer battery safely

1. Connect the PC USB port and the MP3 USB port with the provided USB cable.
2. Once the battery is fully charged, please shut off the power. The charging time is approximately 3 hours.
3. To stop recharging, disconnect the USB cable.

Notes

- Before using your player for the first time, please fully charge the batteries.
- Your computer must be turned on while connected to your player for charging.
- Do not overcharge your player as it may shorten the battery's life.
- The times of charge/discharge are no less than 300 cycles.
- The Li-Polymer battery is consumptive material, so a recharge is needed semiannually even if the player is not being used.
- While charging with adapter, do make sure the rated voltage of your adapter is $5V \pm 0.25V$.
- After removing your player from your PC or charger, the player will be in music playing mode.

Add/Remove files/folders – You can use the player as a removable USB storage.

1. Connect the PC USB port and the MP3 USB port with the provided USB cable.
2. Add files/folders to the USB storage folder.
 - I. Open files/folders to transfer from your computer.
 - II. Open My Computer → Removable Disk from the desktop.

- III. Select the files/folders to transfer from your computer and place them into the folder of your choice in the Removable Disk (you can also transfer files from your PC to the player using the "Copy" and "Paste" functions).



3. Delete MP3 files from the removable USB storage (use the "Delete" command).

Remove the player from PC – Please follow the steps in case of damaging the player or data loss.

1. Click the left mouse button on the  icon that is on the taskbar at the bottom right corner of the desktop.
2. Click the "Safely remove USB Mass Storage Device – Drive (X:)" column.
3. Disconnect the player from your computer.

CAUTION:

- ❖ Do not remove the player while files within the USB Mass Storage are being played on your computer.
- ❖ Do not disconnect the player from your computer while transferring files, or it will cause damage to the player or data loss.

Volume Adjustment – In music playing mode, hold down the **【- / +】** button to turn the volume up or down.

Operation

Turn the power on and play music.

1. Connect the earphone to the earphone jack
2. Press and hold down the **【▶||】** button to turn power on. The red LED light will become bright for 8 seconds and the player will start to play music.

To pause: Short press **【▶||】** button

To play again: Short press **【▶||】** button again

To play previous song: Short press 【-】 button

To play next song: Short press 【+】 button

To turn power off: Press and hold down the 【▶||】 button. The red LED light will flash for 3 seconds and the player will shut off.

Note: If you turn on the player with no music files stored, it will shut off automatically.

When turning on the volume continually and there is a beep sound, short press 【▶||】 to continue

LED Indicator

- ❖ In music play mode: The Green LED light flashes slowly.
- ❖ In music pause mode: The Green LED light remains bright.
- ❖ In charging mode: The Red LED light flashes slowly. Once full charged, the Green LED light remains bright.

Waterproof Function

The MP3 player is waterproof (up to IPX-8). It can be submerged under water up to 3 meters.

When should you reset the player?

- ❖ Please reset your player when it fails to turn on or is stuck in power on mode.

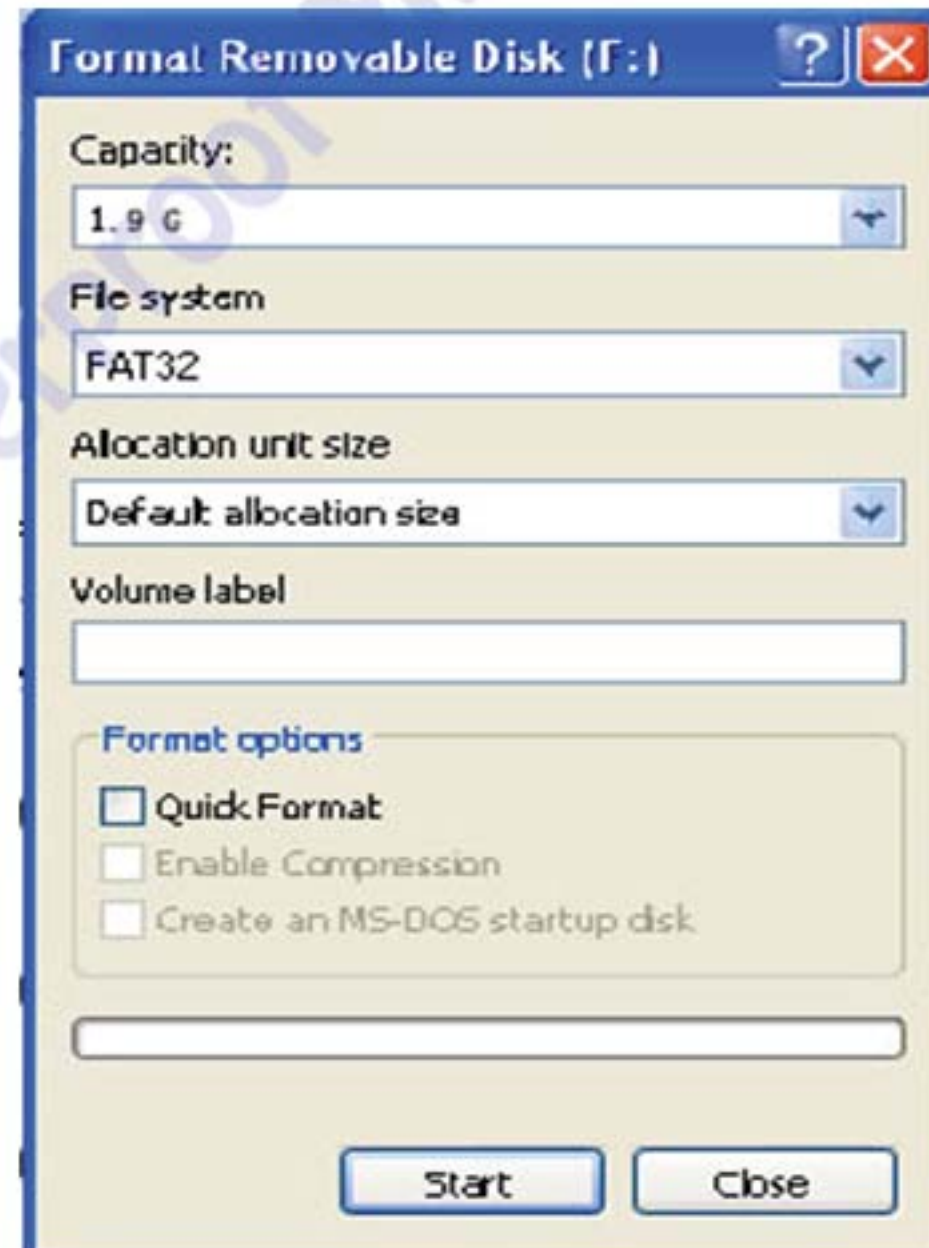
How do you reset the player?

- ❖ Press the reset button until the player turns on and the red LED light appears.

- ❖ Please note that resetting your player will not clear the memory.

Format the MP3 player

The MP3 player format is "FAT". You can right click "Removable Disk" and choose "Format" mode, then click "Start" to format your player. Once you select format the player, all files stored in the player will be deleted.



Technical Specifications

No.	Name	Description
1	Capacity of Memory	NAND Flash up to 16GB
2	USB Interface (USB + Earphones)	USB2.0 (High Speed)
3	Power Supply	Li-Polymer Battery
4	S/N Ratio	$\geq 80\text{dB}$
5	Audio Frequency Range	20Hz – 20kHz
6	Decoding Format	MP3(Mpeg layer 3) and WMA
7	File System	FAT16, FAT32
8	Operating Temperature	5°C----35°C (41°F----95°F)

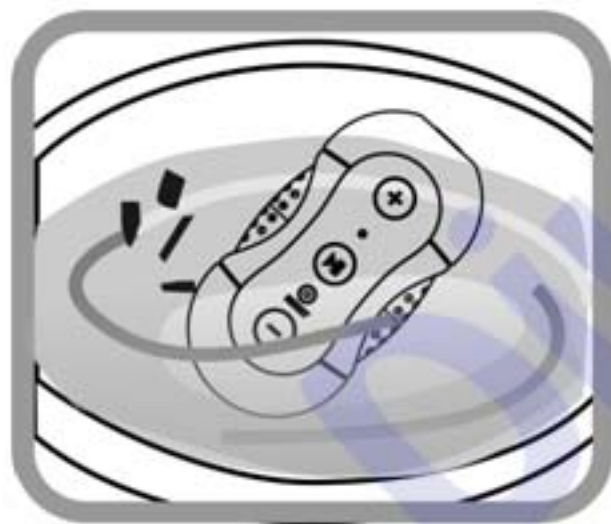
After Use

Please be aware that swimming pool and sea water are corrosive and to keep your MP3 player in good condition we recommend that you rinse the player in fresh water after use.

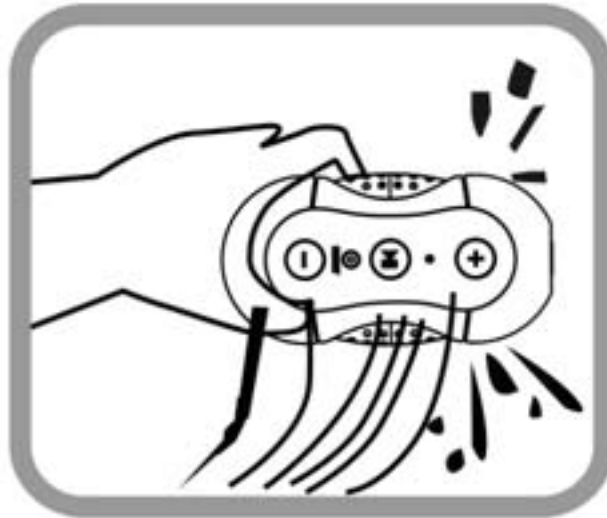
1. Wash and rinse the player under running tap water.



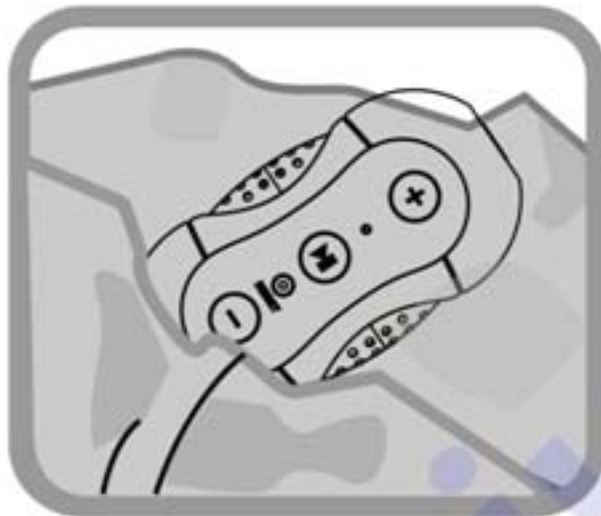
2. Immerse the player for 2 or 3 minutes in pure water to remove any salt.



3. After washing the player in pure water, take it out and shake it a few times.



4. Use a clean cloth to wipe off any excess water. Be sure to use a cloth that is free of salt residue and doesn't have any loose fibers.



5. Use cotton buds to thoroughly wipe off all remaining water droplets from the joint between the front and rear clip.



6. Dry the player completely in a well ventilated location (avoid direct sunlight).

