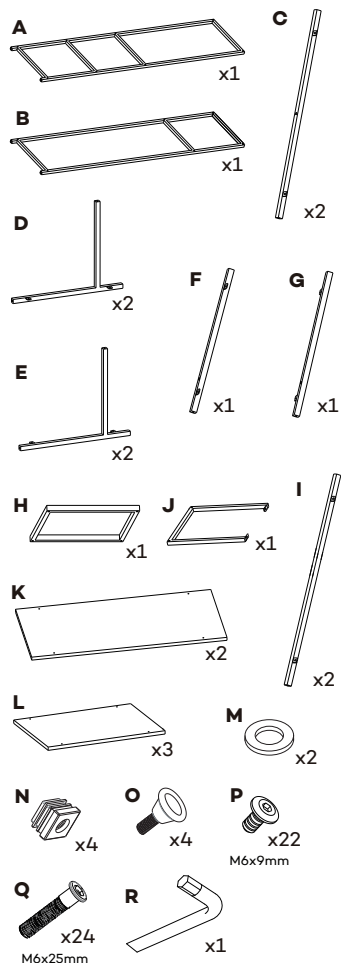


YORI

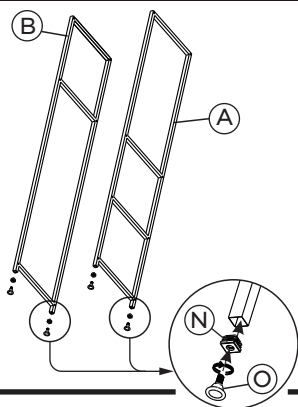
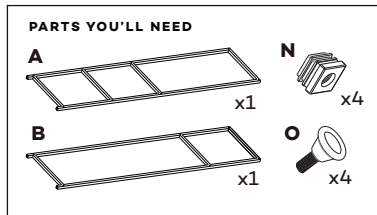
DO IT YOURSELF WITH THE TENJI BOOKCASE (MEGA)

THESE ARE ALL THE PARTS
INCLUDED IN THE BOX.



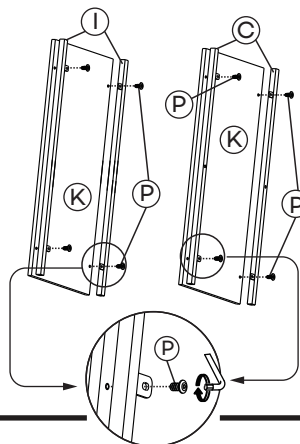
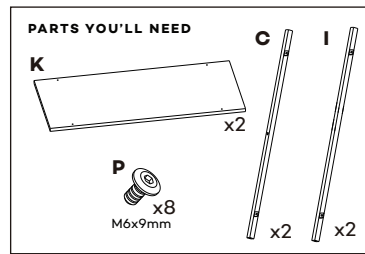
STEP 1

- Put the levelling feet inserts (N) in to the bottom of the shelf legs. (A)(B)
- Screw-in the levelling (O) feet in to the bottom of the shelf legs.



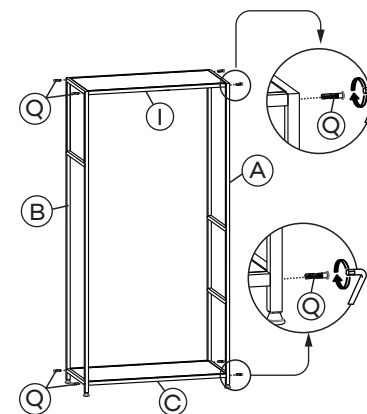
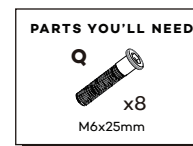
STEP 2

Screw-in the supporting bars (C)(I) in to the shelf panels (K).



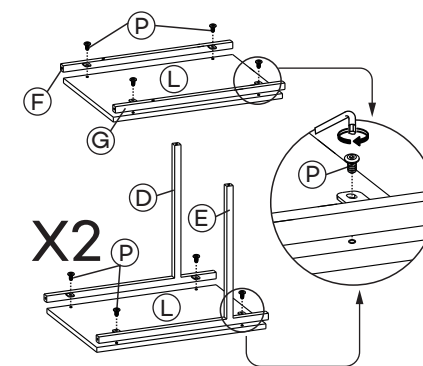
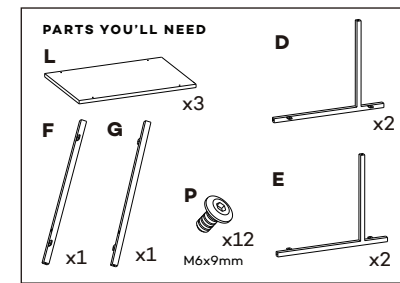
STEP 3

Screw-in (Q) the shelf legs (A)(B) in to the top and bottom panels.



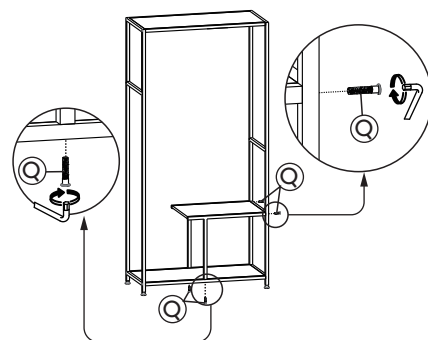
STEP 4

Screw-in the supporting bars (F)(G), and the inner frames (D)(E) in to the panels (L).



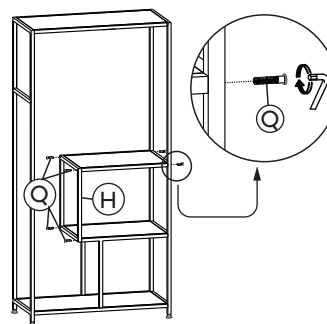
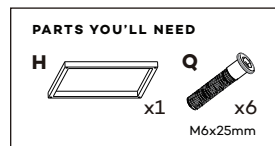
STEP 5

- Screw-in the lower inner frame in to the side of the shelf legs.
- Screw-in the lower inner frame in to the bottom shelf's bar.



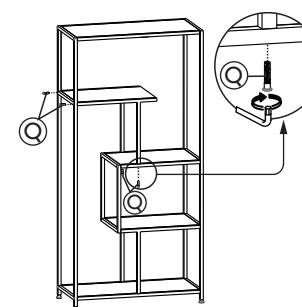
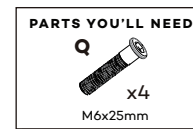
STEP 6

Screw-in the inner square frame (H) in to the bars of the inner shelf panels.



STEP 7

Screw-in the bars of the inner shelf in to the bars of the middle shelf, and in to the shelf legs.



STEP 8

Screw-in the u-bar (J) in to the upper inner shelf's bars and in to the top shelf's bars.

Tighten the screws and...

DONE!

