

mobileAPI™ ALLtracking solution

mobileAPI™ ALLtracking - location tracking solution for LTE, 5G, Tetra, P25, DMR & NXDN

Asset management presents organizations with multiple challenges, with a continually growing number of assets, moving between inside and outside environments, dispersed throughout an ever-increasing geographical area. Tracking these assets in an accurate, timely and cost-effective manner requires a flexible, scalable solution that can be easily and quickly deployed. The ALLtracking location tracking platform from mobileAPI™ enables organizations to combine security management, emergency response, and control and monitoring for LTE/PLTE, 5G/P5G, TETRA, P25, DMR, NXDN-based networks, whatever their size or complexity, in a lightweight web-based solution.

About ALLtracking Platform

ALLtracking in brief

The mobileAPI™ ALLtracking location tracking solution provides industrial organizations with end-to-end asset visibility, emergency response support, and asset and personnel control and management capabilities. System combines visualization, alerting and broadcasting functionality in a lightweight, web-based platform that easily scales to tens of thousands of field assets, with support for hierarchical structures and access segregation. With LTE/PLTE, 5G/P5G, TETRA, P-25, DMR, NXDN radio location tracking, organizations can adhere to stringent security measures and geofencing requirements, safely and rapidly initiate emergency response procedures, and remain fully compliant with corporate regulations for access restrictions and user behavior.

The mobileAPI™ ALLtracking solution has been designed specifically for end-to-end indoor and outdoor tracking of LTE/PLTE, 5G/P5G, TETRA, P25, DMR, NXDN radios (terminals, IoT devices, etc). The platform takes into account not only the increasing need for security and safety considerations, but also supports organizations in handling emergency situations and in developing and implementing overall control and management policies to meet corporate compliance requirements. Just some of the key architectural considerations of ALLtracking solution are:

- **Scalability:** ALLtracking has been designed for limitless scalability, making it easy and cost-effective to deploy and use whatever the size of the organizational infrastructure and however large and fast it grows.
- **Web-based GUI:** the lightweight web-based architecture, compatible with all major browsers, and requiring minimal resource requirements on user terminals, means that all configuration, management and operational tasks can be performed by dispatchers from a single user interface.
- **Protocol support:** the ALLtracking solution supports LIP and LRRP protocols for professional radios, for integration into ALLtracking and 3GPP standards-based deployments, whatever their size
- **Seamlessness:** the AALTracking solution provides seamless support for both indoor and outdoor positioning, supporting online maps such as Google Maps, Bing Maps, ArcGIS Online, CartoDB and OpenStreetMap, as well as online maps such as OpenStreetMap and ArcGIS.
- **Integration:** ALLtracking can be deployed as a stand-alone end-to-end indoor and outdoor location tracking solution for LTE/PLTE, 5G/P5G, TETRA, P25, DMR, NXDN radios, as well as an integration gateway between a LTE/PLTE, 5G/P5G, TETRA, P25, DMR, NXDN network and an overarching location tracking application, providing a high level of deployment flexibility.

Key Features and Benefits

Asset tracking and security management

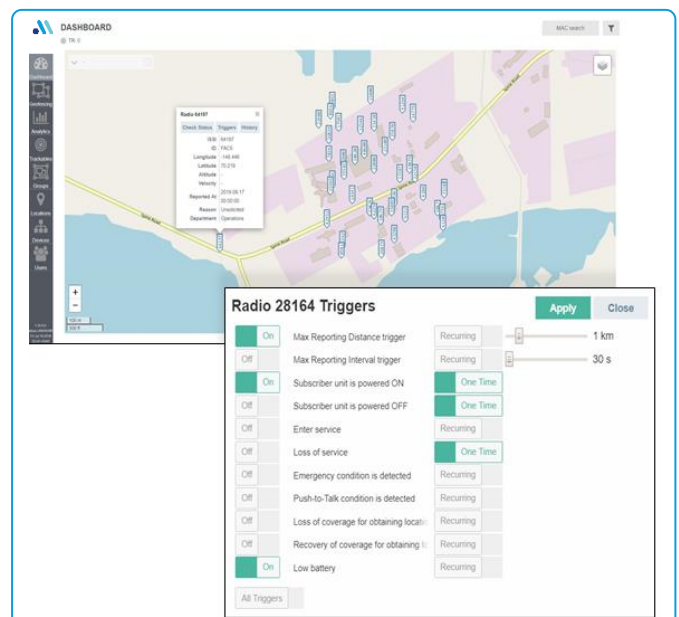
With security as a paramount concern, it is *essential to always understand where corporate assets are located*, along with establishing and maintaining appropriate security perimeters. ALLtracking provides *end-to-end visibility and tracking*, both indoors and outdoors, for all radios, no matter how widespread or complex the infrastructure. Geofencing alerts are received should a radio cross allocated perimeters, and notification triggers can be set to alert that corporate transport has entered or left a production zone or specific parts of a facility. A bird's eye view is provided for employees and their locations, and radio location history information, with display and replay for single or multiple objects, can be used for incident investigation. With ALLtracking, organizations can be *confident that security measures are implemented and adhered to*.

Geofencing support allows the operations teams to define dangerous areas and no-go zones, enabling automated notifications on employees' terminals and dispatch consoles simultaneously.

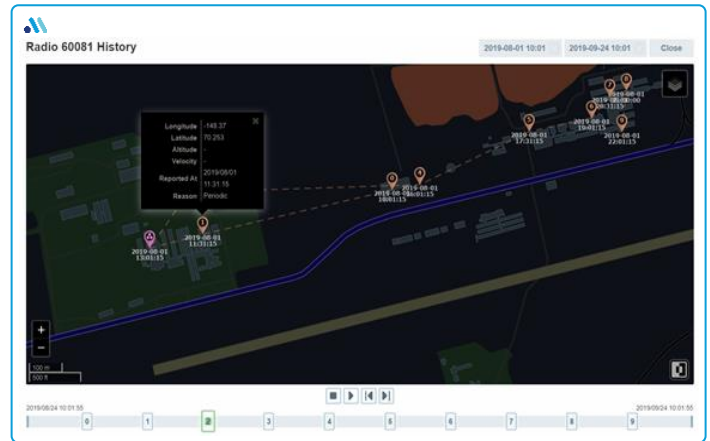


Control and monitoring

Monitoring and control extends to more than security, and it is *essential to make sure that corporate rules and requirements are adhered to* throughout the organization. ALLtracking provides *seamless tracking of assets and personnel* as they move between indoor and outdoor facilities. Its flexible structure supports dozens, hundreds or even thousands of field assets, allowing hierarchical subdivision of monitored teams, with full access segregation. Speed limits can be enforced globally or in specific areas of the facility, and geofencing events are notified both in-app and by email. Entry into restricted areas can be accurately tracked, and reporting tools can provide insight into worker behavior. With ALLtracking, organizations can be *confident that all assets are compliant* with required control and monitoring protocols.



With communications in mission-critical infrastructure, it is *essential to be able to rapidly, effectively and safely respond to emergency situations* and hazards such as spills, leaks or fires. ALLtracking provides *a number of emergency response features* for such situations. It enables text messages to be broadcast to multiple radio stations, locating, selecting and alerting workers near the location of a potentially hazardous event.



Organizations can monitor evacuations of personnel in real-time through the ALLtracking functionality, ensuring all workers have reached designated safety zones. Additionally, the emergency situation room receives 'fall' signals from the fall sensor of the radio station, with a specially-assigned alert sound. With ALLtracking, organizations can be *confident that emergency response management is timely, controlled, and, above all, safe.*

Please visit <https://mobileapi.io/> for more information about mobileAPI™ and how ALLtracking is helping organizations control, manage and secure their field assets, as well as learning more about the solution and its applications.

<http://mobileAPI.io>