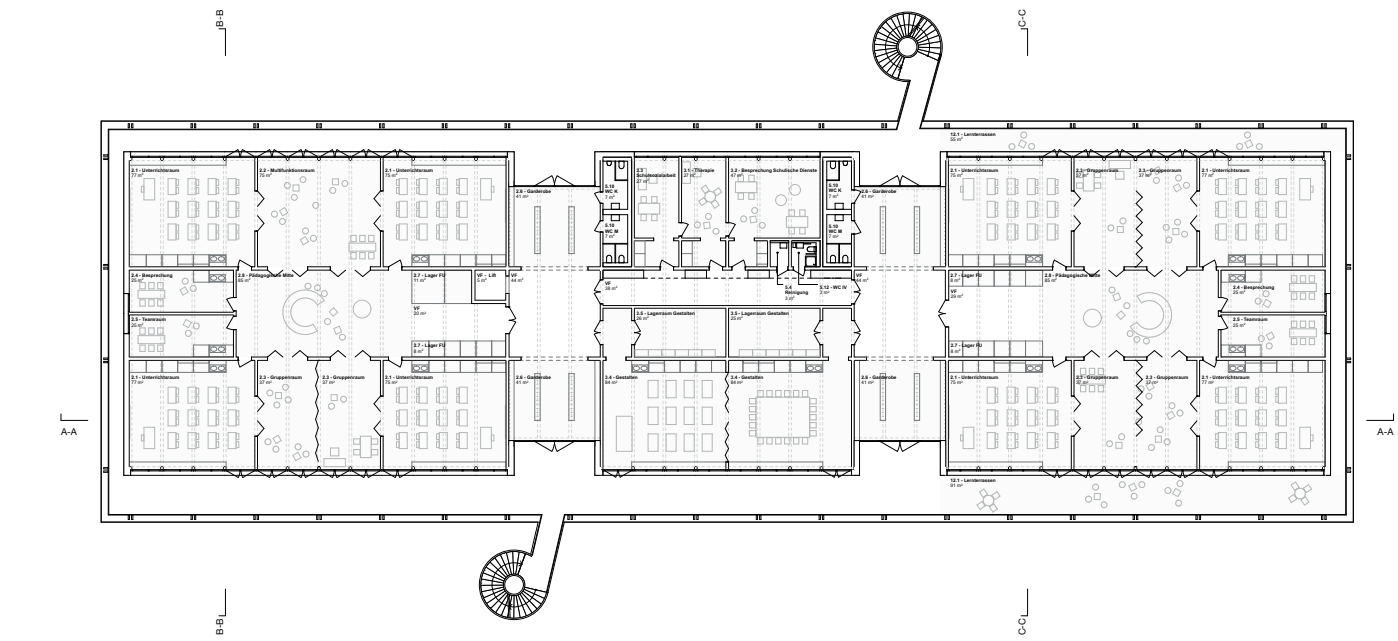
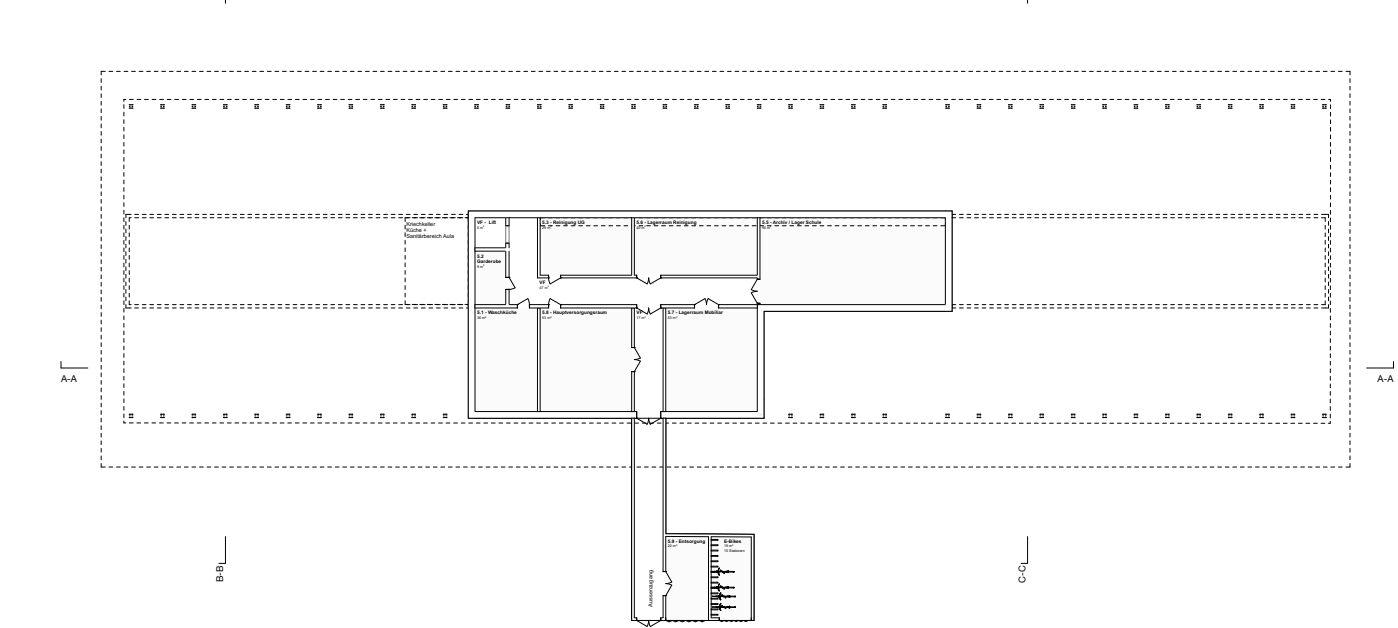


Grundriss 2. Obergeschoss | 1:200

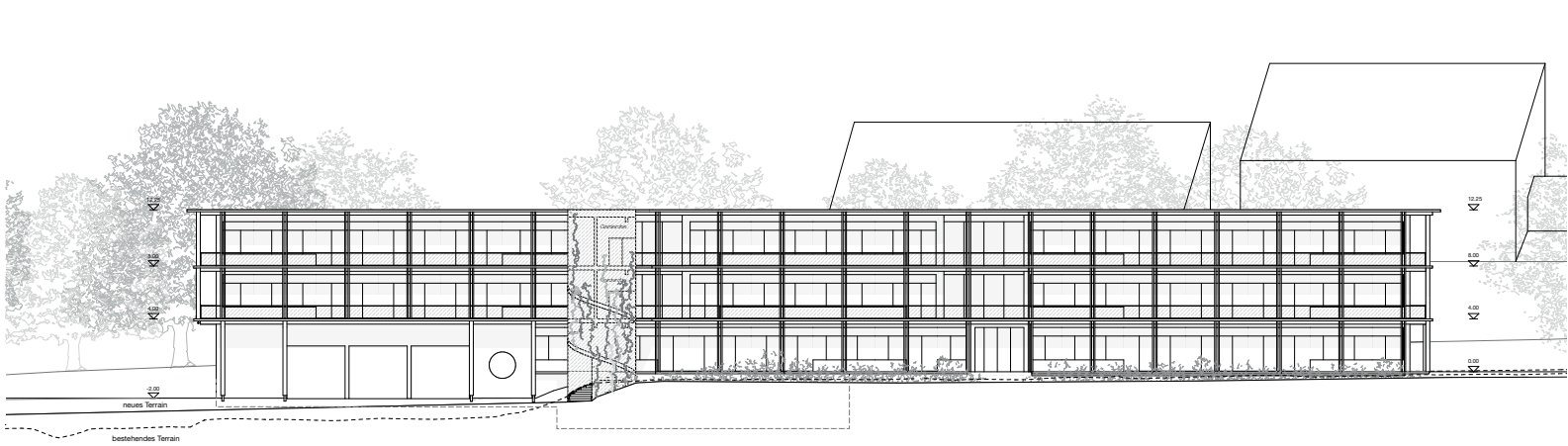


Grundriss 1. Obergeschoss | 1:200



Grundriss 1. Untergeschoss | 1:200

JENGA



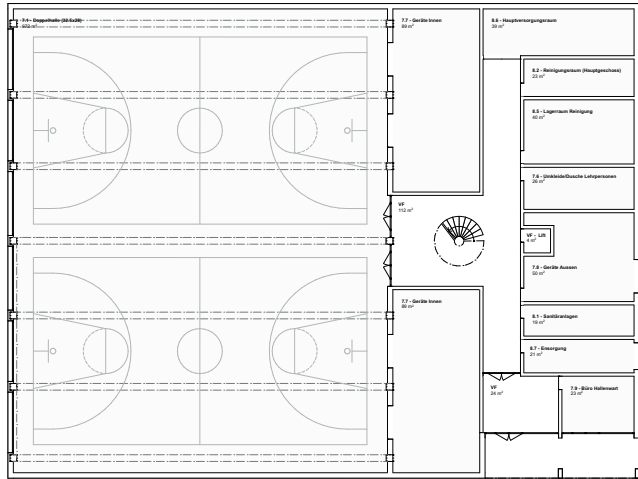
Ansicht Südwest | 1:200



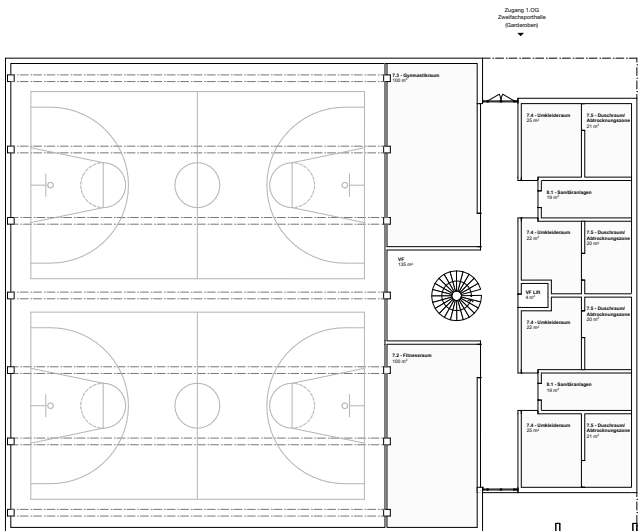
Schnitt A-A | 1:200



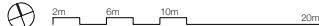
Schnitt B-B | 1:200



Erdgeschoss Doppelturnhalle | 1:200



Obergeschoss Doppelturnhalle | 1:200



Neubau Schulanlage Kehlhof Adligenswil