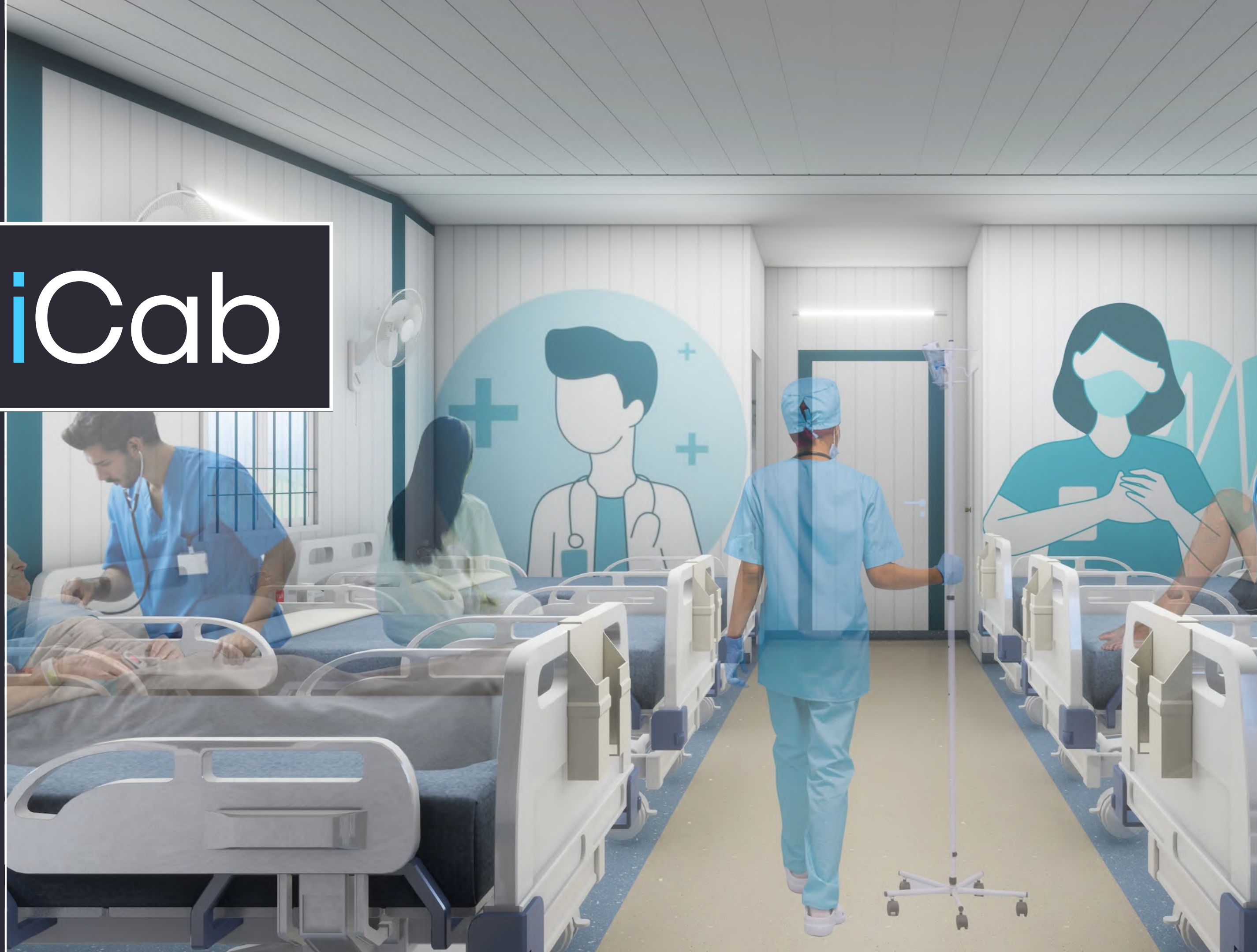
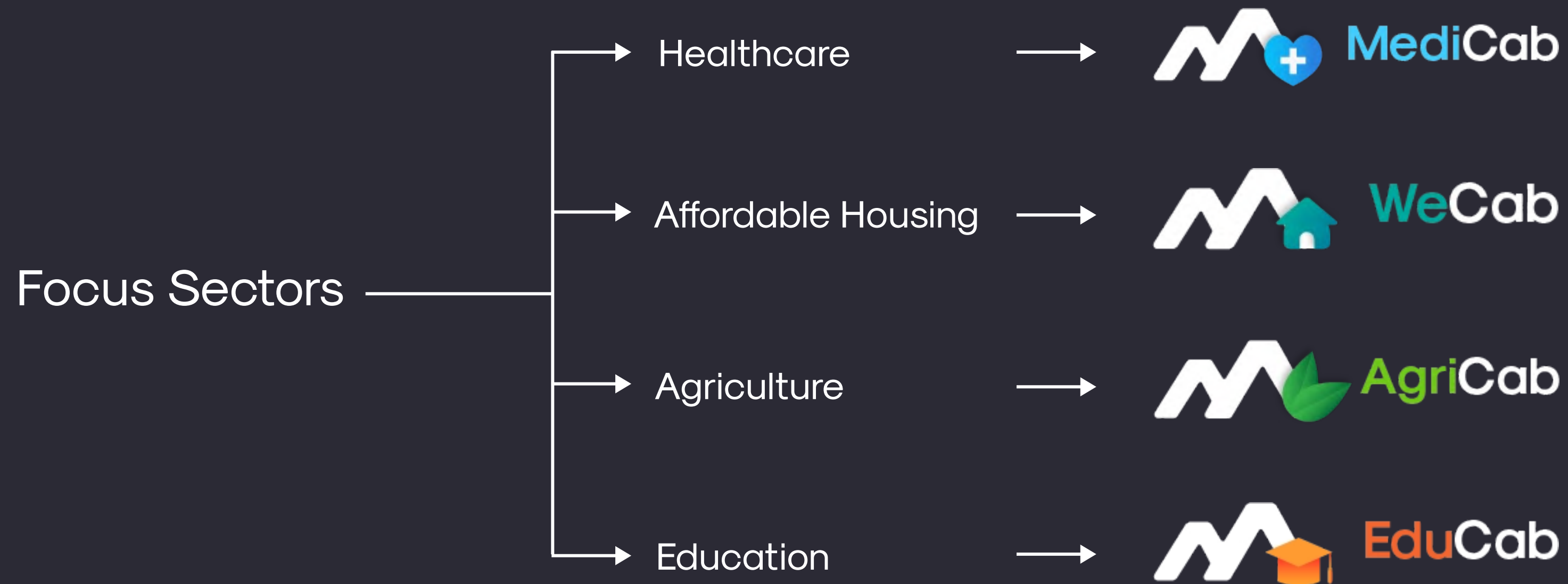


MediCab

Providing
Rapid
Affordable
Construction
Solutions



Modulus Housing utilizes prefabricated, modular construction to **provide rapid, affordable construction solutions** for governments and enterprises.



What is modular construction?

Modular construction is manufacturing **standardized components** of a structure in an off-site factory, then assembling them on-site.



Time-saving

Manufacturing of the standard modules happens concurrently with site preparation, the total time it takes to build a structure can be dramatically reduced.



Efficient building process

Benefits like greater worker safety, improved productivity, increased schedule certainty, and improved cost predictability.



Portable & Reusable

Reusability ensures the customer is buying an asset which can be redeployed over 20 times across multiple locations during its useful life.



The Modulus Edge

ABInBev

croma

Quanta

Deploy anywhere within 60 days



Precertified modules approved
as per building codes



High reusability ensuring performance of asset



Built on assembly lines with
100% quality assurance





Modulus housing, a pioneer of modular construction in India, having executed projects across the nation.

21+

States

150+

Projects

1000+

Structures

"Achieve universal health coverage and access to quality healthcare. No one must be left behind"



2030 Agenda for Sustainable Development, adopted by India in 2015



MediCab





To bridge the healthcare inequality between rural and urban India
we require:

Rapid deployment of specialised
healthcare infrastructure in rural villages

Specialized Medical Units

ABInBev

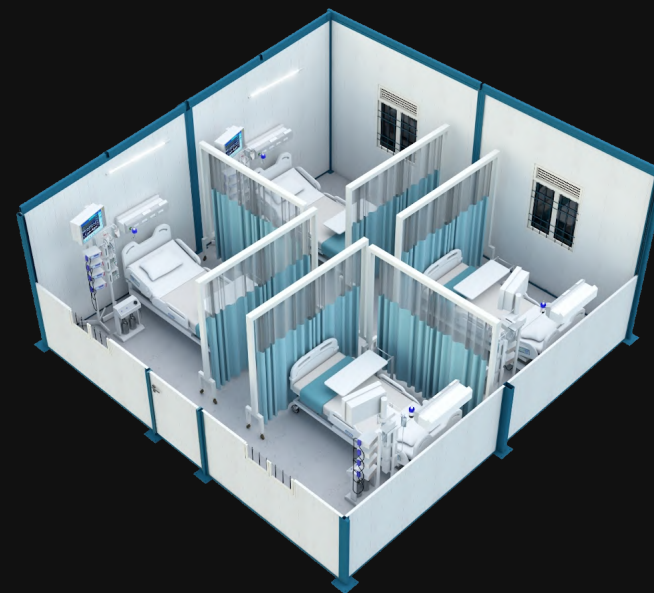
croma

Quanta



Specialized Medical Units

Designed to revitalise



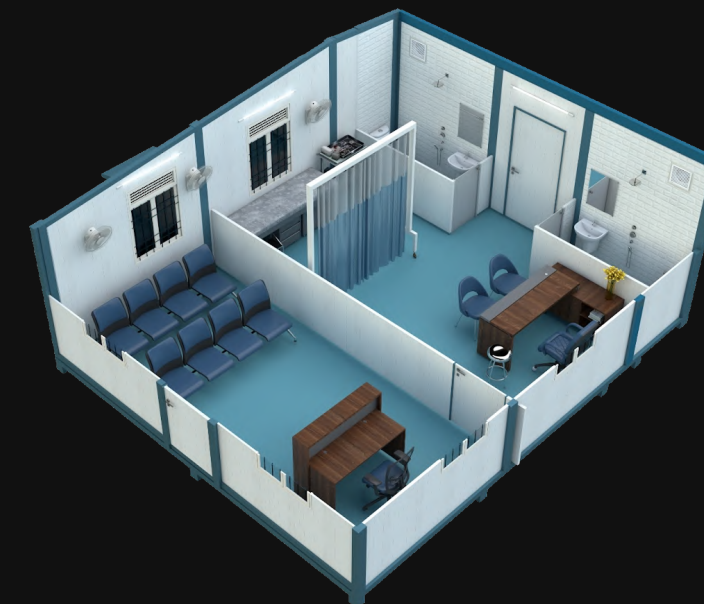
ICU Ward



OPD Ward

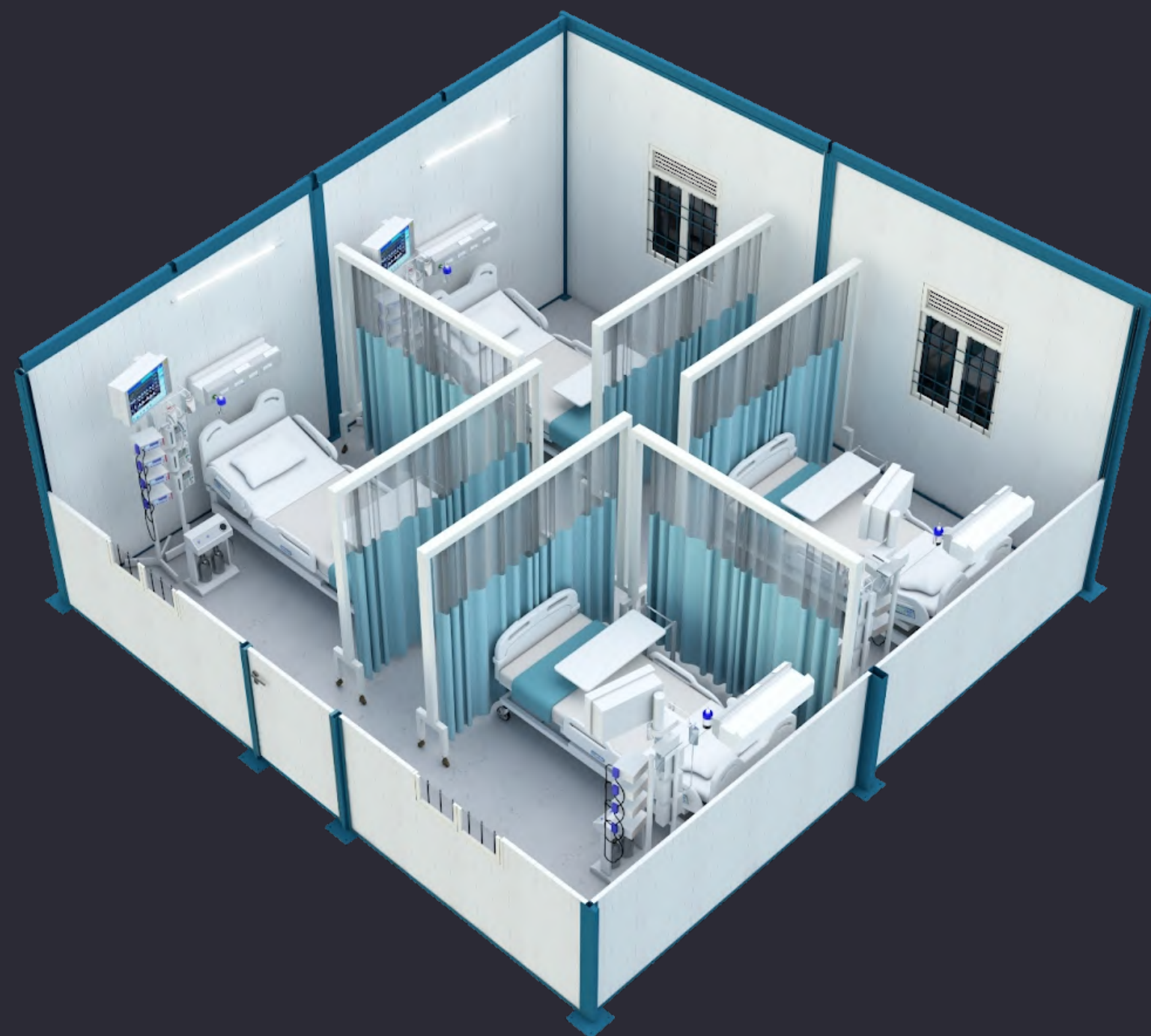


Pharmacy



Clinic

ICU Ward



Area
400 sq ft

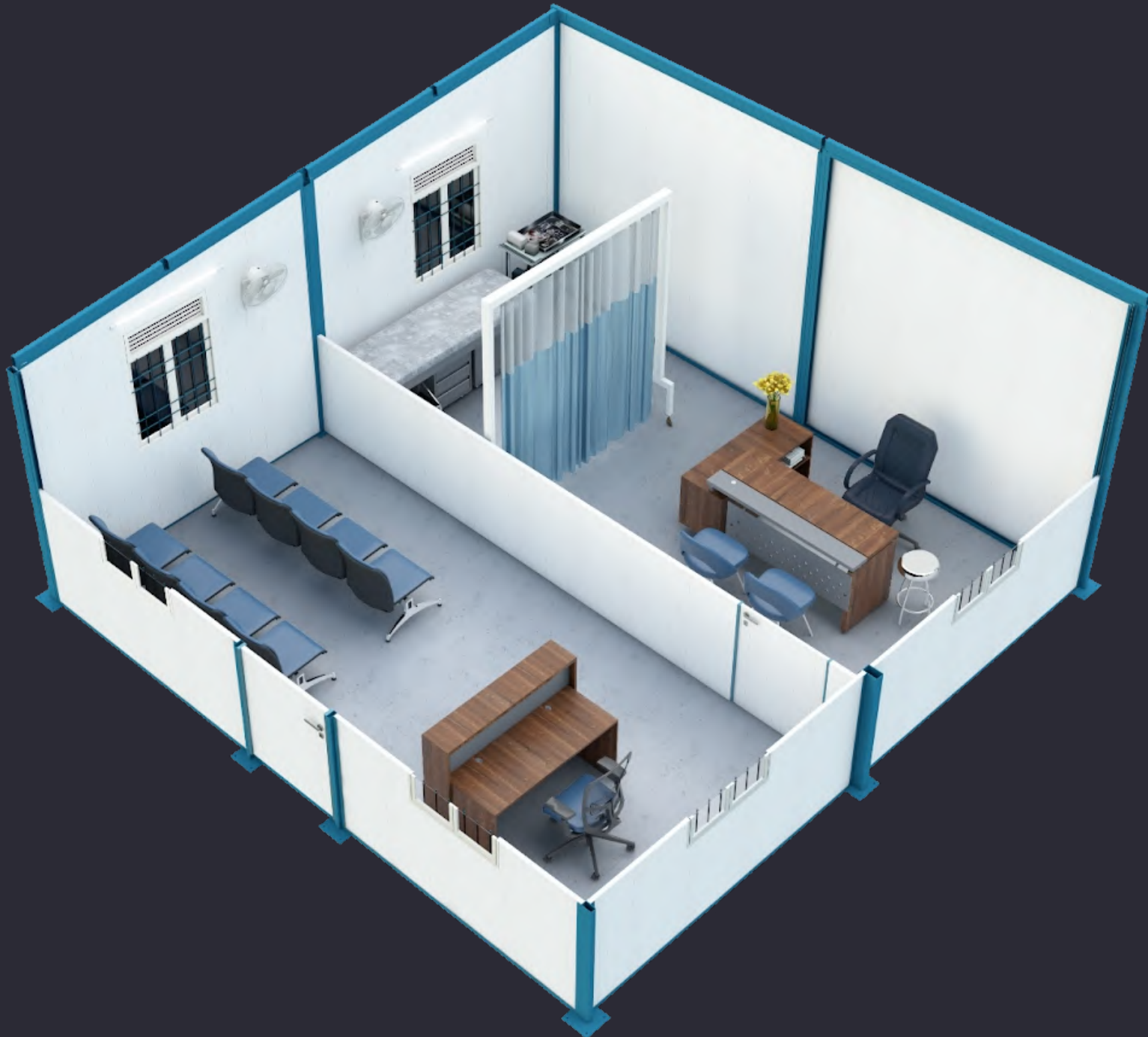
Perimeter
20' x 20'

Cost

Foldable	INR 920000 /- + GST
Flatpack	INR 840000 /- + GST
Furniture	INR 295000 /- + GST

+Transportation as actuals

OPD Ward



Area
400 sq ft

Perimeter
20' x 20'

Cost

Foldable	INR 952500 /- + GST
Flatpack	INR 870000 /- + GST
Furniture	INR 90900 /- + GST

+Transportation as actuals

Pharmacy



Area
400 sq ft

Perimeter
20' x 20'

Cost

Foldable INR 962500 /- + GST

Flatpack INR 880000 /- + GST

+Transportation as actuals

Clinic



Area
400 sq ft

Perimeter
20' x 20'

Cost

Foldable INR 962500 /- + GST
Flatpack INR 880000 /- + GST

+Transportation as actuals



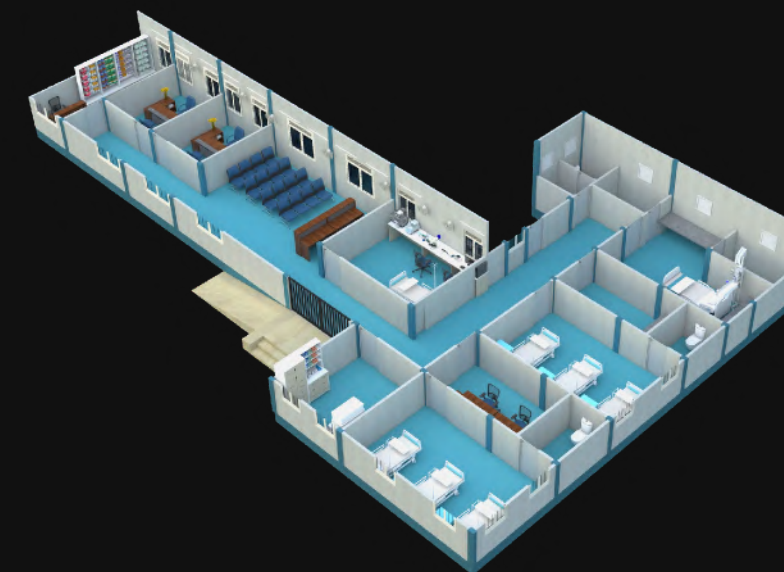
ECRP



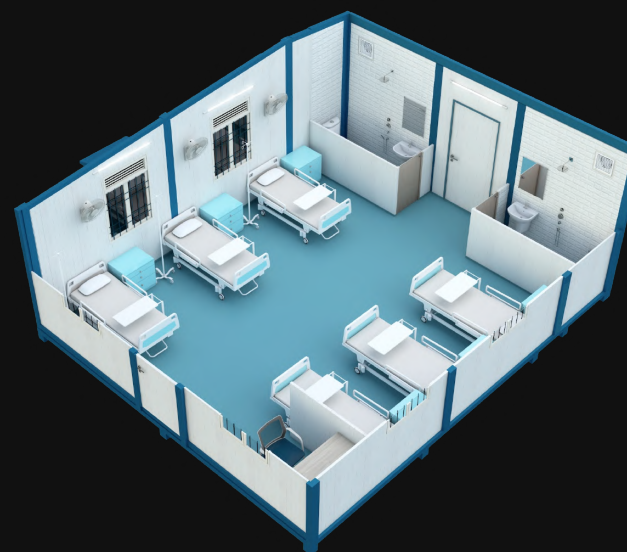
ECRP



Sub Health Centre



Primary Health Centre



6-Bed Extension Ward



20-Bed Extension Ward

SHC Sub Health Centre



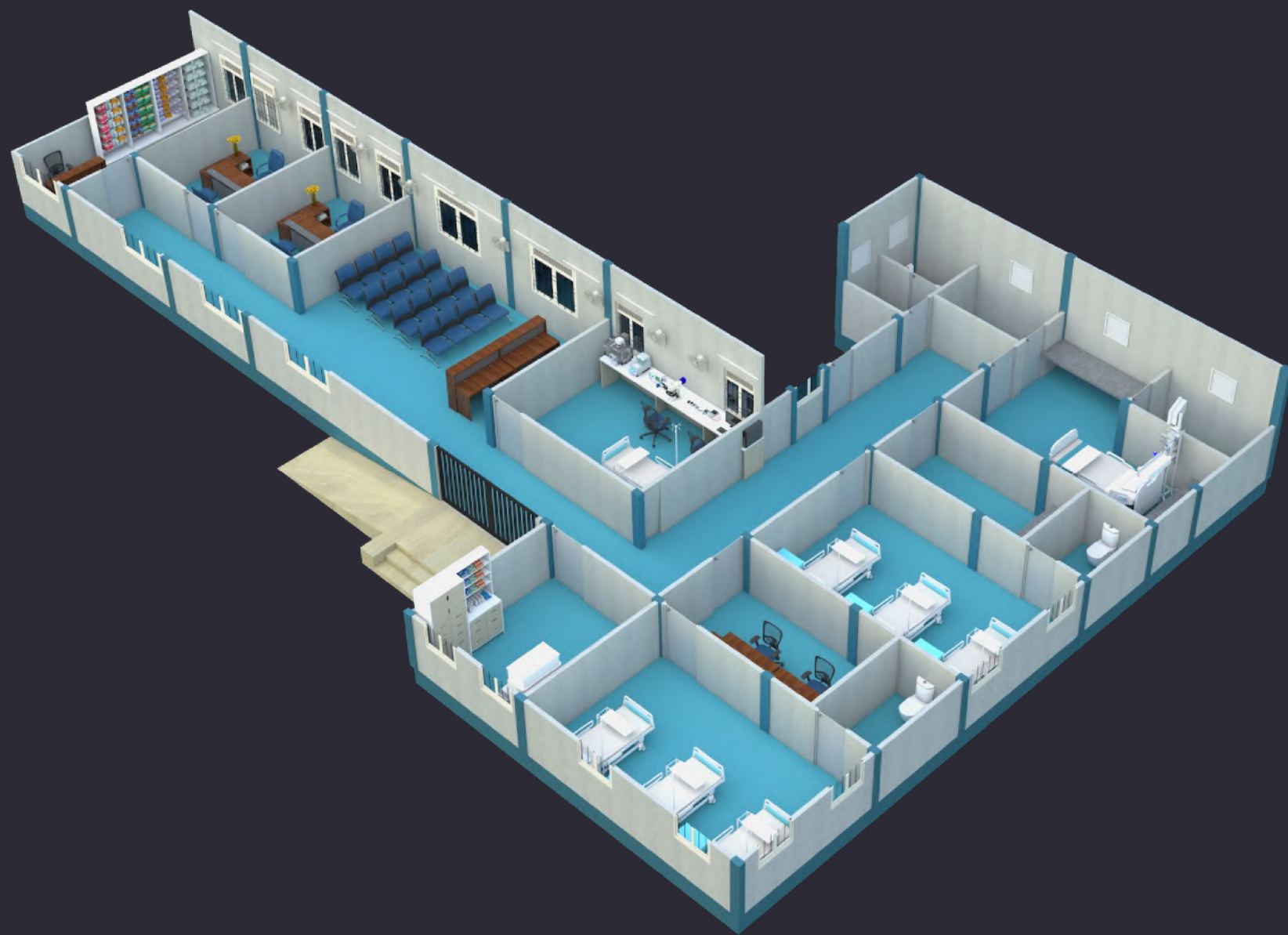
Area
765 sq ft

Perimeter
28' x 30'

Cost
INR 1700000/-

Inclusive of Transport,
Foundation & GST

SHC Sub Health Centre



Area
2900 sq ft

Perimeter
92' x 54'

Cost
INR 6500000/-

Inclusive of Transport,
Foundation & GST

6 Bedded Extension Unit for SHC & PHC



Area
480 sq ft

Perimeter
20' x 24'

Cost
INR 920000/-

Inclusive of Transport,
Foundation & GST

20 Bedded Extension Unit for CHC



Area
1600 sq ft

Perimeter
40' x 40'

Cost
INR 32 Lakhs

Inclusive of Transport,
Foundation & GST



ECRP Pediatric

ABInBev

croma

Quanta



ECRP Pediatric



42-Bed Pediatric Unit

42-Bed Pediatric Unit

30 Bedded pediatric ward
8 HDU bed
4 ICU bed



Area
7020 sq ft

Perimeter
120' x 62'

Cost

The background image shows a row of white modular hospital units. Each unit has a corrugated metal roof with a solar panel mounted on it. The units have large windows and doors. One unit has an air conditioning unit mounted on its side. The text 'ABInBev' is visible on the side of the units. The scene is set outdoors with trees in the background.

Hospital Layout

50-Bed Hospital



50-Bed Layout



Zone - 1 : Doctors room

Zone - 2 : Out patient ward

Zone - 3 : Isolation ward

Zone - 4 : ICU ward

Zone - 5 : Utilities & service wards

100-Bed Layout



Zone - 1 : Doctors room

Zone - 2 : Out patient ward

Zone - 3 : Isolation ward

Zone - 4 : ICU ward

Zone - 5 : Utilities & service wards

The background image shows a row of white modular medical units. Each unit has a door with a window and a small solar panel mounted on the roof. An air conditioner is visible on the side of one unit. The units are situated outdoors with trees in the background.

Features



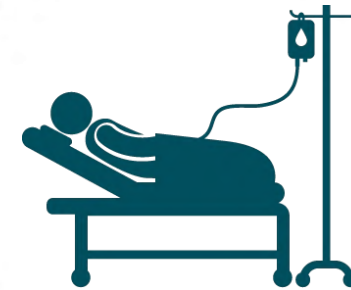
Certified and tested products

Built according to **Indian Standard Building Codes** and **IS Codes**.



Fire safety built-in

Built with fire safety materials. Getting fire safety clearance is an **instant** process.



Medical grade furniture

Semi-fowler beds, bedside lockers, saline stands, tables and cupboards.



CDSCO approved

Specialized structures approved by **Central Drug Control Administration**.



Quality and Warranty

Factory built structures with consistent quality and **5 years warranty** on manufacture defects.



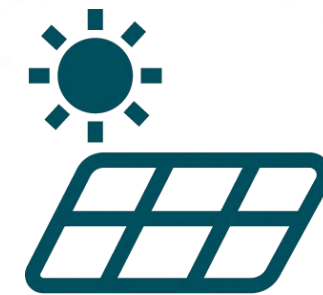
Site preparation included

We got an extra mile and take up **site preparation into our scope** to make the project faster and smoother.



Superior Thermal Insulation

Increased floor height and special ventilation system to make the **cabins comfortable without electricity.**



Solar power with batteries

Rooftop solar panels with **battery and inverter** systems.

The background image shows a long, white mobile office unit with a corrugated metal roof. Several solar panels are mounted on the roof. The unit has multiple windows and doors. One door is open, revealing a dark interior. An air conditioning unit is visible on the side of the unit. The unit is parked on a paved surface, and there are trees in the background. The text "Interior Views" is overlaid in the center of the image.

Interior Views



Interior Views





Interior Views





Interior Views





Interior Views





Past Projects



A group of approximately 30 people, including men and women, are posed for a group photo in front of a single-story building. The building has a sign that reads "Mission Lakadong" and "Directorate of Horticulture, Government of Meghalaya". The people are dressed in a mix of formal and traditional attire. The background shows a rural landscape with trees and a dirt road.

Modulus' Reach

OUR CLIENT'S TESTIMONIALS



Prof. V Kamakoti, Director
Indian Institute of Technology Madras

" Every time, wisdom must suit a crisis. There is no point in saying I am wise, when it comes to a crisis I run off. This technology created by Modulus Housing has suited a crisis and has proved it."



Meera Siva, Shelter Venture Fund Director
Habitat for Humanity, Chennai

" The purpose of this technology is to bring disruptive solutions to huge issues that small updates cannot sufficiently address. Our partnership with Modulus Housing for the deployment of MediCAB and its journey with different stakeholders is an excellent example of solutions."



Nidhi Bhasin, CEO
NASSCOM Foundation India

" During the pandemic, tech adoption accelerated three-folds. This is where we see a lot of Indian start-ups like Modulus Housing taking up social causes to create impact as part of their business models."



OUR CLIENT'S TESTIMONIALS



Bandana Jha, Head Social Impact
Wells Fargo India & Philippines

"Modulus Housing efficiently and professionally executed the plan of setting up these portable transferrable annex hospital units at the cancer hospital in Muzaffarpur, which have been instrumental in providing relief and treatment to cancer and COVID-19 patients."



Pratima Harite, Head of Philanthropy
Asia Pacific, Lenovo

" The 70-bed negative pressure 'MediCAB' hospital built by Modulus Housing is one of several noteworthy solutions developed by startups incubated at IIT Madras..."



Ankur Nagaria, Senior Manager
UW Bengaluru

"MON is a remote location and the CHC in MON had only 12 beds to treat a population of 50,000 people. With the help of Modulus Housing we were able to set-up a 30-bedded hospital which is currently used as general ward & ICU."



OUR CLIENTS

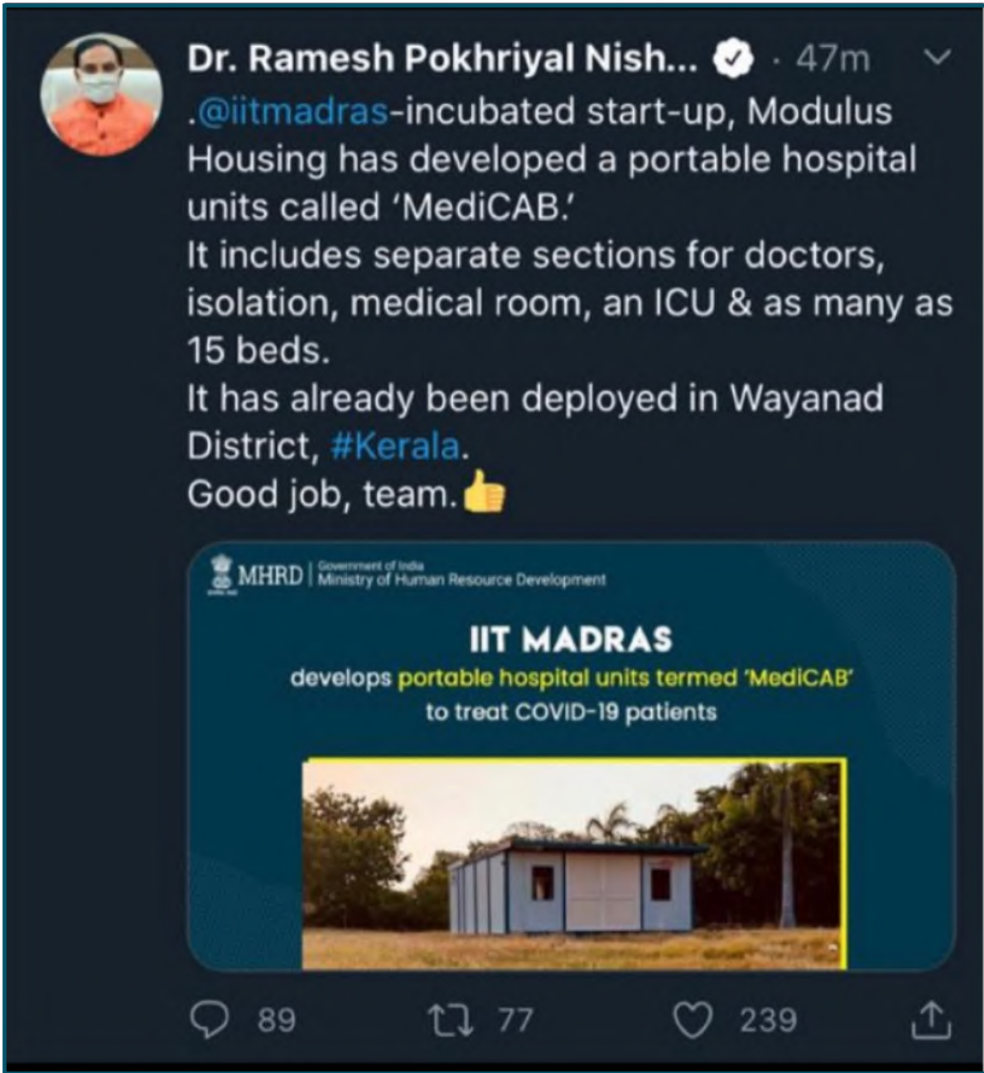
10+
NGOs

20+
MNC & CSR

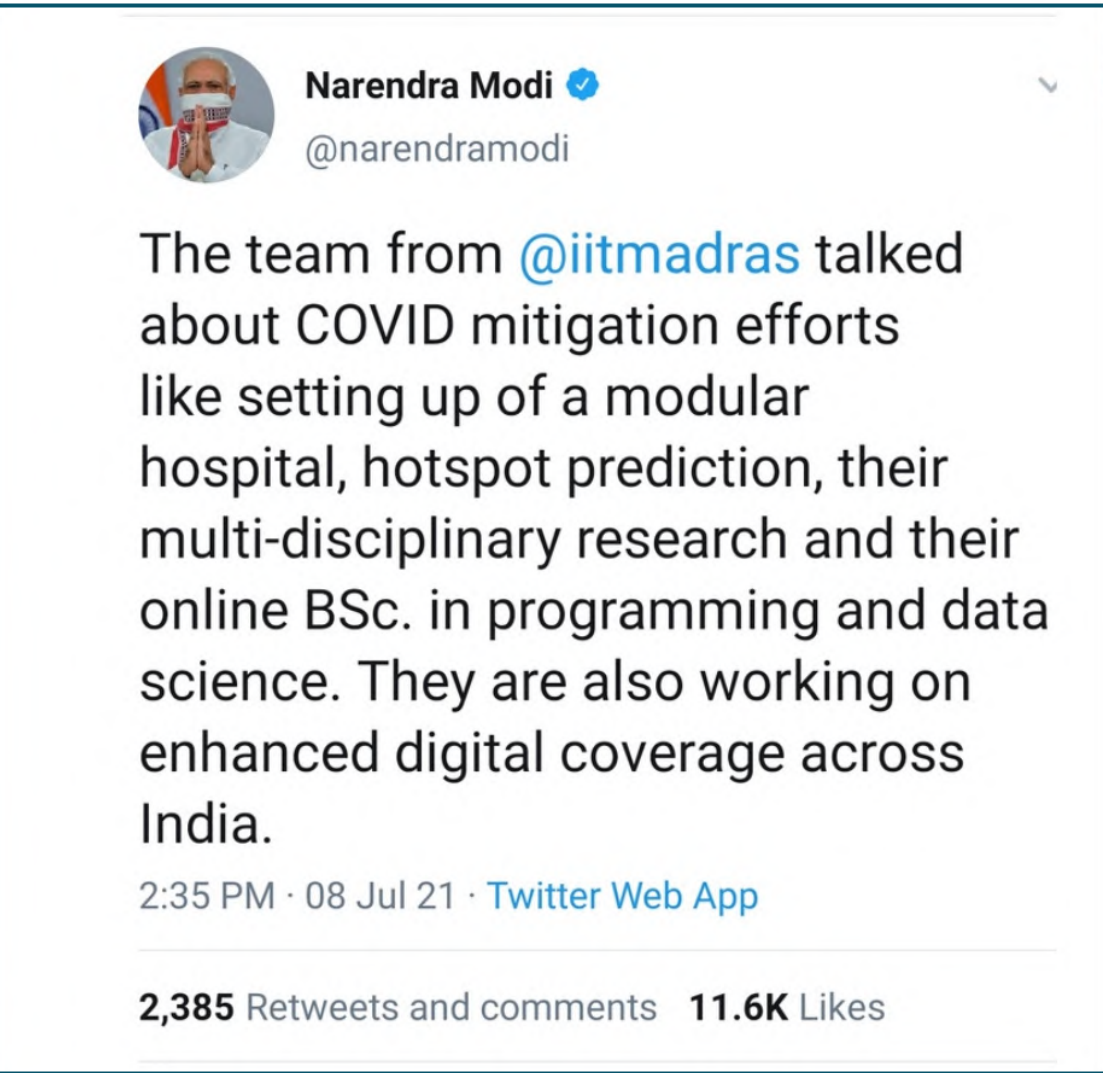
21+
State
Government



RECOGNIZED BY THE GOVERNMENT & MEDIA



The Hon'ble Union Education Minister
Govt of India



The Hon'ble Prime Minister of India
Govt of India



The Hon'ble Union Health Minister
Govt of India



IIT Madras Incubated Startup Develops Portable Covid-19 Hospital Unit 'MediCAB'

IIT Madras-incubated Start-up, Modulus Housing has developed a portable hospital unit that can be installed anywhere within two hours by four people. Incubated at the IIT Madras research park in 2018, the two founders Shreeram Ravichandran and Gobinath Pandurangan of Modulus Housing set out to revolutionise modular prefab structures. At their manufacturing unit in Chengalpet, Tamil Nadu, they recently developed Covid-19 micro-hospitals with four zones — a doctor's room, an isolation room, a medical room/ward, and a twin-bed ICU. It can be installed anywhere in two hours.



Source: modulushousing.com

How this IIT-Madras incubated start-up is reimagining India's construction industry

Written by Chandraveer Mathur
Apr 03, 2021, 01:23 pm | 5 min read



After witnessing the havoc wreaked by the 2015 Chennai floods first-hand, then 22-year-old Shree Ram Ravichandran felt there was a dire need for disaster relief shelters

Kaithal's 100-bed portable hospital boosts healthcare facilities in district

Chandigarh News
Published on Apr 01, 2022 12:41 AM IST

Set-up amid the speculations of the third wave of Covid-19, Haryana's first 100-beds portable hospital has given a boost to healthcare facilities in Kaithal district



Since its inauguration on February 26, the Kaithal hospital has provided treatment to hundreds of patients. (HT Photo)

Modulus provides DIY houses you can take anywhere anytime

The aim of the company is to transform construction from laborious time-consuming service to an instant DIY Product.

Published: 23rd January 2020 11:24 AM | Last Updated: 23rd January 2020 11:24 AM



Modulus was conceptualised by IIT Madras alumni Shreeram and Gobinath, after they witnessed the 2015 Chennai floods.

Bongkhao Konyak inaugurates 30 bedded modular hospital at Community Health Centre Tobu



Advisor DUDA, N Bongkhao Konyak inaugurated the 30 bedded modular Hospital in Community Health Centre (CHC) Tobu on June 10. The 30 bedded Modular Hospital was funded by ThermoFisher Scientific and executed by United Way Bengaluru & Modulus Housing. In his speech, Konyak thanked the funding agency and United Way Bengaluru & Modulus Housing for coming up with the project in CHC Tobu.

- Must Read
- International | February 21, 2023
Take steps to function as a country: IMF tells cash-starved Pakistan
 - Nagaland News | February 21, 2023
PCBA holds 'prayer walk' for clean election
 - National | February 21, 2023
Kushwaha quits JD(U) again, floats yet another party
 - International | February 21, 2023
Mass protests in Israel as lawmakers prepare 1st vote on judicial overhaul
 - International | February 21, 2023
Putin was 'dead wrong': Biden says on surprise visit to Ukraine



Contact Us

IIT Madras research park, Kanagam Rd,
Tharamani, Chennai, Tamil Nadu 600113

+91 869340363

www.modulushousing.com

