

# Seamless Know Your Transaction (KYT) Monitoring and Wallet Screening

Without the right level of visibility, moving into crypto can become risky fast. Bad actors are very good at exploiting blind spots across exchanges, third-party wallets and defi. This risk not only holds back widespread adoption of crypto, but also stifles innovation.

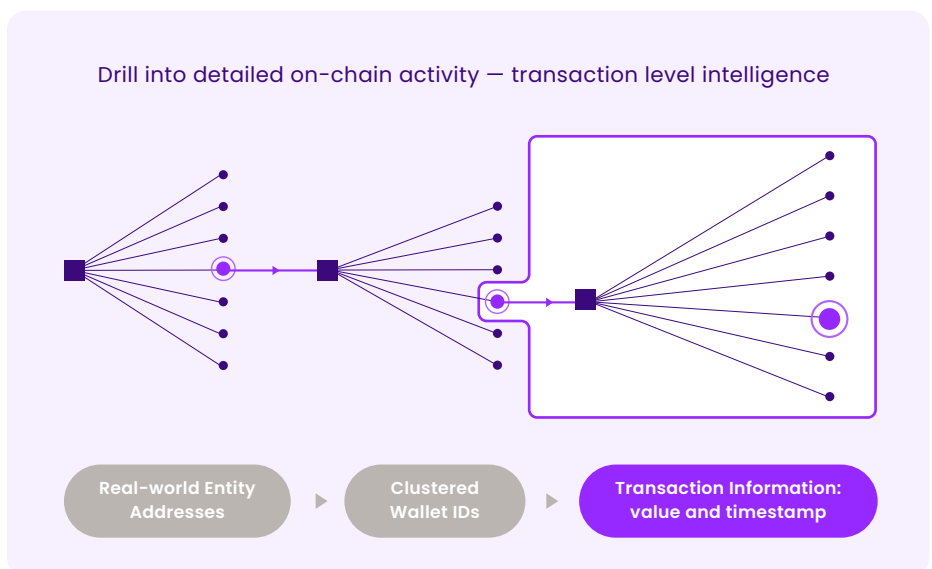
Radar provides unmatched visibility into on-chain activity and identifies all areas of risk with end-to-end tracing of the flows of funds and identifies areas of risk with the best attribution data available anywhere in the world.

## Using data science to follow the flow of funds accurately

Radar applies data science to restructure and optimize blockchain disjointed data, clearly showing the relationships between activities beyond just the transaction level. Unlike algorithmic based systems, Radar provides a much higher degree of accuracy and certainty.

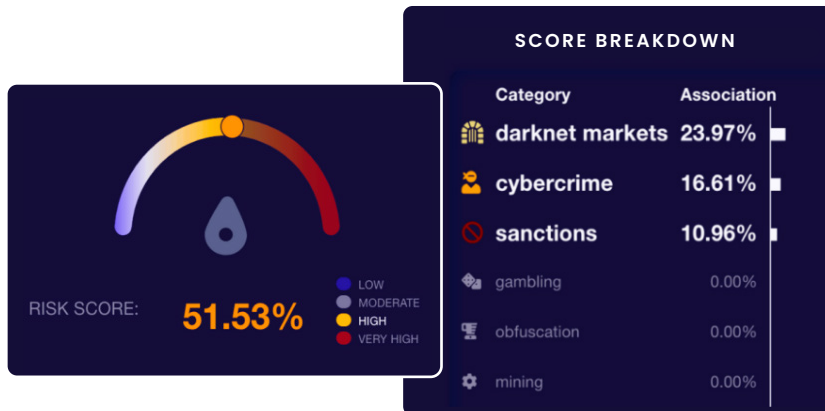
### Unlimited on-chain visibility

Radar provides the most powerful clustering and deepest entity attributions — giving you unmatched visibility from the entire topology at the ledger-level to each isolated transaction.



## Real-time risk scoring

Instantly receive a risk score and detailed breakdown to the movement of funds — providing a holistic understanding of risks to your organization based on critical factors such as darknet markets, cybercriminals, sanctioned entities, and more.

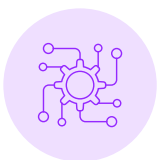


## Radar Benefits



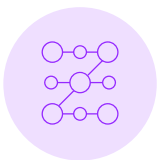
### End-to-end visibility

A complete data set enables you to see an unlimited “number of hops” between risky sources and source wallets



### API-first approach

A lightweight API that integrates with existing workflows, implement Radar into existing systems seamlessly and efficiently.



### Deeper tagging and attributions

See beyond first level attribution to discover the true beneficial owners of an address or wallet. Reach a deeper level of attribution and insight to mitigate risk.

## Blockchain visibility is a data problem

Lack of data is the root cause of blockchain intelligence. For efficiency, data on the blockchain is added sequentially — without considering the source of funds. First gen tools only offer manual exploration of this data, which is time consuming, error prone, and cannot deliver the intelligence required to ensure your organization operates in a safe and compliant manner.

### Limited data

Data sets are incomplete and siloed, resulting in the inability to see beyond the first level of on-chain activity.

### Bad intelligence

Without unified and accurate data, BI tools are useless, and leveraging data for better decision making is out of the question.

### Risk vulnerability

Incomplete data equals an inability to see the full picture, making it easier for bad actors to evade detection from security defenses.

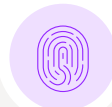
## All the Elements you need for identifying risk and strategizing accordingly

Radar, and the broader Elementus solution, is the #1 data-driven blockchain intelligence platform in the market. By combining the most comprehensive data set available with patented algorithms, Elementus enables financial institutions and crypto exchanges of any size to leverage the blockchain with ease and confidence — whether the goal is investigating on-chain activities, identifying risk, or discovering valuable market intelligence to create new revenue opportunities.



### Risk Management

Mitigate risk with the most complete mapping of bad actor data, eliminating contact with cybercriminals, darknet markets, obfuscation, OFAC sanctioned entities, CSAM and human traffickers, mining and gambling sites.



### Forensics Analysis Nested Entities

Drill down into nested entities to identify bad actors hiding in plain sight within exchanges or hosted wallets and to illuminate the true beneficial owner.



### Regulatory Compliance

Ensure compliance with U.S. government standards (e.g., Travel Rule, OFAC, FINCEN) barring financial activities with a growing list of countries.

## Partner with Elementus for all your blockchain needs

Elementus is a data-first web3 company on a mission to help forward thinking, data-driven organizations of all sizes to leverage the power of blockchain. Whether you're investigating on-chain activities, identifying risk, discovering valuable market intelligence, or a combination of all three, our platform provides the most complete data set and sophisticated attribution capabilities on the market, resulting in the actionable insights you need to grow and prosper safely in a web3 world.



Corp Dev  
Investments Team



Trading  
Team



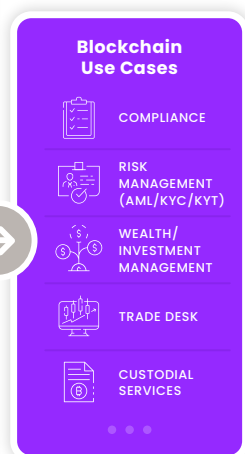
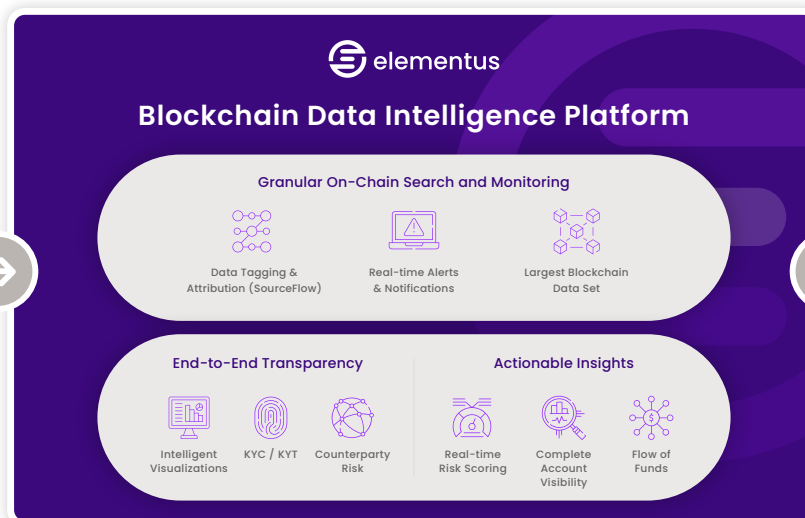
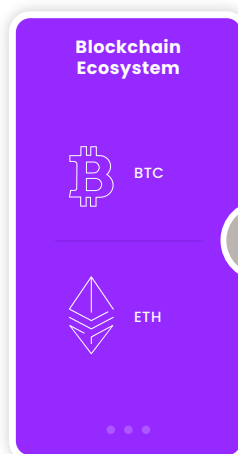
Cryptocurrency  
Team



Data Science/  
Analytics Team



Compliance  
Team



**Want to see it in action? If you're ready for us, we're ready for you.**

Reach out to [hello@elementus.io](mailto:hello@elementus.io), or visit [elementus.io](https://elementus.io)