

VetGuardian™



Quick Start Guide



IN THE BOX

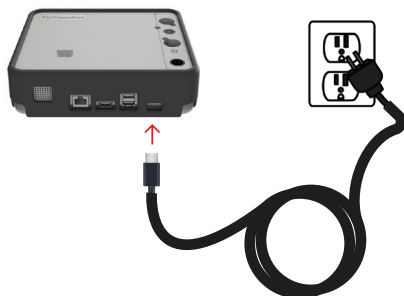
- 1) VetGuardian Monitor
- 2) USB-C Power Adapter
- 3) Mounting Arm with Clamp



SETTING UP THE VETGUARDIAN MONITOR

1 Connect the Device to Power

- a Attach the USB-C end of the power adapter to the bottom of the VetGuardian device, then plug the other end into a wall outlet.



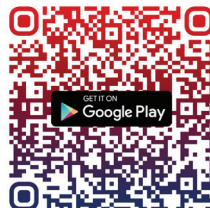
- b Hold the Power Button on the side of the device for 3 seconds. After a minute, a corner LED light will turn **dark blue** indicating the device is in setup mode.



- c If the LED is not dark blue, hold the **Minus Button '-'** on the side of the device for 30 seconds. Wait for one minute. If the light does not turn dark blue, please contact VetGuardian Support.

2 Download the Onboarding Application

- a **Scan one of the QR codes** to access the Onboarding Application, or search your device's app store for "VetGuardian Onboarding." **Install** the Application.



- a Open the Application.
Click **'Let's Get Started.'**

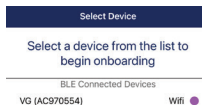


This app will help you to connect and configure your VetGuardian Devices on your network and the cloud for control and remote monitoring.

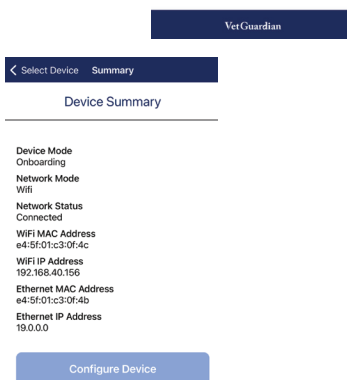
This app supports the following VetGuardian Devices



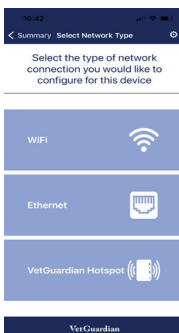
- b Wait for your device to be found via Bluetooth, then select your device.



- c Click **'Configure Device.'**



- d Click **'Wi-Fi'** (Recommended).



- e Select your clinic's Wi-Fi Network and enter the password.

Select to join a network

0053288001	🔒	📶
0053288001_2GEXT	🔒	📶
0053288001_5GEXT	🔒	📶
DIRECT-94-HP OfficeJet Pro 8710	🔒	📶

Back Join Network

Enter Password

0053288001

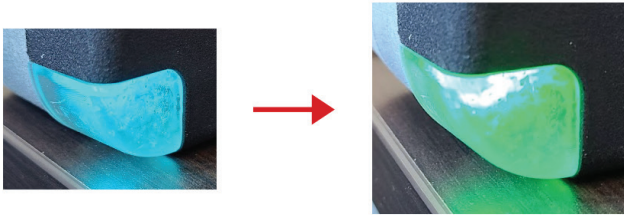
Password:

Connect

- i Click **'Connect.'**

other networks (advanced)

- g The device will reboot. A **light blue** LED will blink as the device attempts to connect to the Wi-Fi network. Once successfully connected to the network, you should see a **green** LED.



3 Account & Device Registration

- a Navigate to <https://account.vetguardian.com>.

- b Click **'Sign up'** to create an account for your clinic, or log in if you already have one. Enter your information.

Sign in with your email and password

Email
name@host.com

Password
Password

Forgot your password?

Sign in

Need an account? [Sign up](#)

- c A verification code will be sent to your email. Enter the verification code and click **'Confirm'**.

Sign up with a new account

Email
name@host.com

Given name
Family name

Password
Password

Sign up

no-reply@verificationemail.com
To: [redacted]

Your confirmation code is 015200

Confirm your account

We have sent a code by email to "name@host.com". Enter it below to confirm your account.

Verification code:
[redacted]

Confirm account

Didn't receive a code? Send a new code

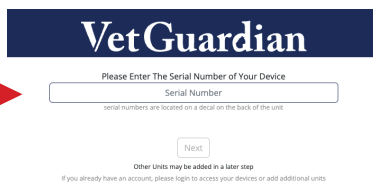
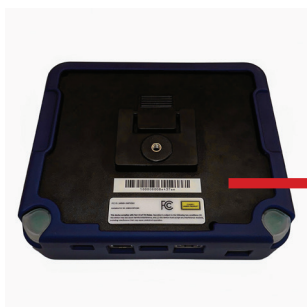
- d On the next page, enter your clinic's information, then click 'Next.'



The image shows a registration form for VetGuardian. At the top is the VetGuardian logo. Below it is a section titled 'Add a Clinic'. The form contains several input fields: 'Clinic Name', 'Address', 'Address 1', 'Address 2', 'State', 'Zip', and 'Phone'. A 'Next' button is located at the bottom right of the form.

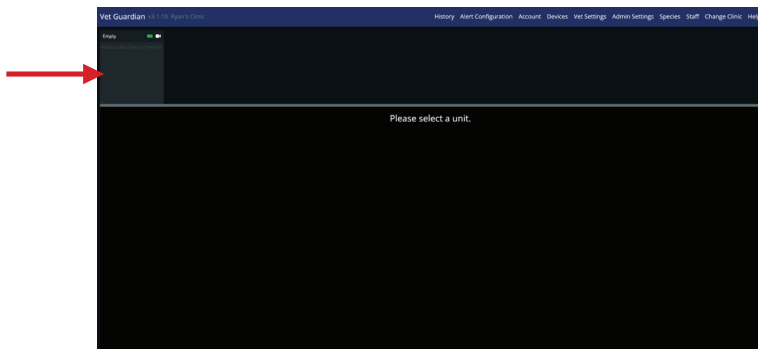
- e Find the device serial number located on the back of the device under the barcode.

- i Enter the **serial number**, then click 'Next' to complete registration. The device has now been added to your clinic.



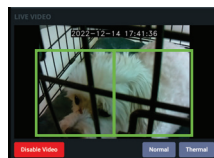
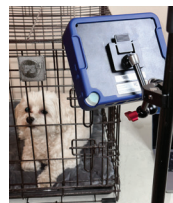
The image shows the VetGuardian serial number entry screen. It features the VetGuardian logo at the top. Below it is a section titled 'Please Enter The Serial Number of Your Device'. There is a 'Serial Number' input field and a 'Next' button. Below the input field, it says 'serial numbers are located on a decal on the back of the unit'. At the bottom, it says 'Other Units may be added in a later step' and 'If you already have an account, please login to access your devices or add additional units'.

- f Navigate to <https://cloudapp.vetguardian.com> and log in to the account you just created. The device you added should now be visible in the top left.



4 Mounting & Positioning

- Turn the red knob counterclockwise to loosen the entire mount. Screw the end of the mounting arm to which the clamp is not attached into the back of the VetGuardian Device.
- Attach the clamp to an IV Pole or directly to a cage. Tighten the clamp securely.
- Aim the device at the patient's left side with the monitor tilted downward at about 45 degrees.
- The patient's head should be on the left of the camera frame, and the patient's back or chest should be visible on the right of the frame. When ready, turn the red knob clockwise to tighten the mount.



5 Running Your First Monitoring Session

- On the VetGuardian Cloud App home screen, click the drop-down arrow and select your device.
- Click "Add Patient". Patient info must be complete to begin monitoring.
- Configure alarms if necessary.
- Click "Enable Video".
- Click "Start" to begin monitoring.

Menu/Navigation Bar

Alarm Threshold

Heart Rate

Respiration

Temperature

Patient Info




Start/Stop

Live Video

Vet Tech/Doctor Notes

Support

Need help with your device? We're happy to help.

 1-844-VGVITAL

 info@VetGuardian.com



Installation Videos



Full User Manual



Schedule an Installation

VetGuardian is a registered trademark of Structured Monitoring Products, Inc., Other brands and product names are trademarks or registered trademarks of their respective holders. Copyright © 2022 STRUCTURED MONITORING PRODUCTS INC., All rights reserved.



VetGuardianTM

www.VetGuardian.com