



Certified INUSpheresis®  
Center Basel

+41 61 381 85 85  
basel@ayus.group  
www.ayus.group

# INUSpheresis®: Successes in Long Covid

At the INUS Medical Center in Cham, Germany,  
the connection between the formation of autoantibodies  
against neurotransmitter receptors and a conspicuous  
chronic inflammation was demonstrated in more than 470  
CFS patients (Chronic Fatigue Syndrome).



# INUSpheresis®: Successes in Long Covid

## Chronic Fatigue and Long Covid

The diagnosis of Long Covid patients also shows the same abnormalities as in Chronic Fatigue Syndrome (CFS) with similar symptoms.

Although many symptoms (especially of neurological and cardiological nature) have already been identified in medical research on long covid patients, the correlation with chronic fatigue is particularly strong.

## COVID-19 disease and inflammatory processes in vessels

In acute COVID-19 disease, a disturbance in ACE2 and acetylcholine receptors is observed. These receptors are responsible for fluid balance in blood vessels and lymphatics.

Likewise, a disturbance is observed in adrenoreceptors, important control elements in sympathetically innervated tissues such as blood vessels.

Thus, severe inflammation of the inner walls of blood vessels is typical of Covid-19 infections. The virus itself has been repeatedly detected in the vessel walls.

## INUSpheresis® as an additional treatment option for Long Covid

For patients with Long Covid, INUSpheresis® is used as a combination therapy for this reason, as a 2-phase therapy with 2 different systems:

### Phase 1:

INUSpheresis® against micro thrombi and as an anti-inflammatory measure with the INUS 30 filter system.

### Phase 2:

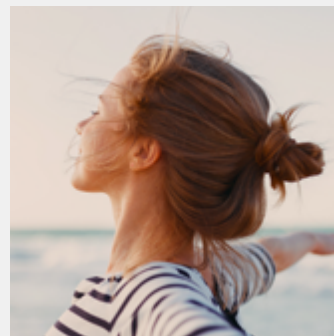
INUSpheresis® filtering of immunological problem factors, pro-inflammatory cytokines, and autoantibodies with the membrane TKM58.



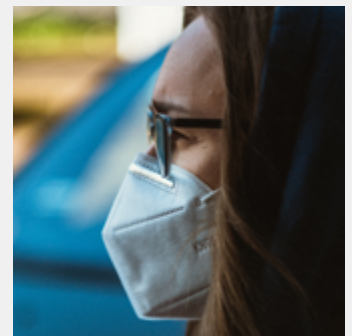
## INUSpheresis® Center Basel



## INUSpheresis® for prevention and as therapy for Long Covid



INUSpheresis®:  
Prevention and Therapy

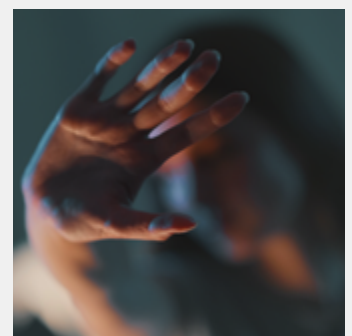


INUSpheresis®:  
Successes in Long Covid

## The INUSpheresis® can help with the following diseases



Disease patterns - Causal  
therapy by INUSpheresis®



Autoimmune Diseases



Chronic Inflammation

## Medical team in Basel



**Dr. med. Anton Ilin**  
Anesthesiologist



**Milva Geissmann**  
Certified Nurse



**Marina Leiser**  
Certified Intensive Care Expert

## Questions, contact & appointments in Basel

If you have any questions, you would like a telephone consultation or would you like to make an appointment in Basel?

### **INUSpheresis® Center Basel**

Ayus Medical Basel AG  
Aeschengraben 10, CH-4051 Basel

Phone/Whatsapp: **+41 61 381 85 85**

E-Mail: **[basel@ayus.group](mailto:basel@ayus.group)**

Website: **[www.ayus.group](http://www.ayus.group)**



Scan our address



Visit our webpage

Ayus Medical Group AG, Bernerhöhe Süd 1, CH-6410 Goldau

