

# MICA 2023 (all models)

---

## Setup Manual



# Table of contents

---

---

General Information .....	3
IMPORTANT: Before you begin .....	4
General Setup .....	6
Modbus RTU Setup .....	13
Modbus TCP Setup .....	16
Usage notes .....	19

# General Information

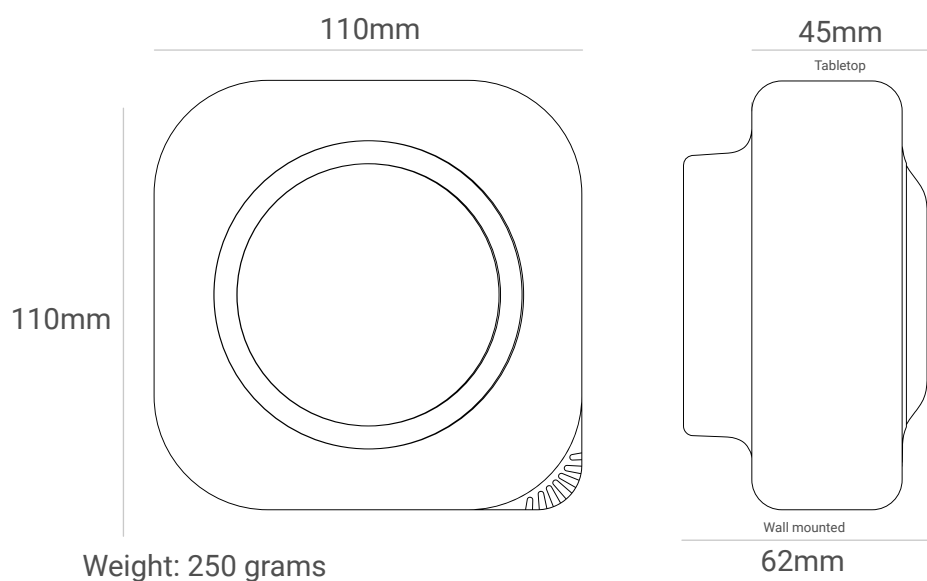
---

## Features

MICA 2023 version (all models).  
For indoor use.  
PC-ABS plastic with UV protection.

---

## Dimensions and weight



## Power Supply

USB type C 5V connector (desktop version).  
110 - 240V AC 50-60 Hz 0.2A fast connector.  
8 - 36V DC 2A 10W fast connector.

---

## Communication

Wi-fi (2.4 GHz up to 150 Mbit/s).  
GSM (2G SIM card).  
LoRaWAN.

---

## Communication

Modbus RTU (serial protocol RS485).  
Modbus TCP (wireless).

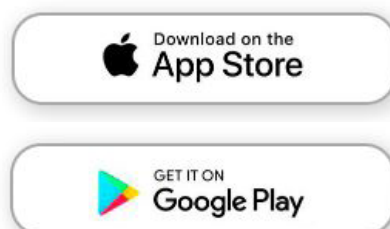
---



**IMPORTANT:**  
**Before you begin**

## Follow these three steps:

1. Download inBiot's setup app on your phone. You can do this by clicking on the stores' buttons or by scanning the QR code.

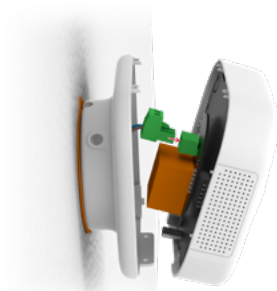


2. Check the model of MICA you are going to setup, this is indicated at the bottom of the packaging.

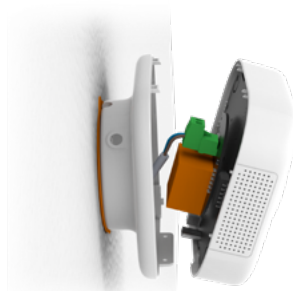


Model:
<input type="checkbox"/> MICA
<input type="checkbox"/> MICA Plus
<input checked="" type="checkbox"/> MICA WELL
Characteristics
Power supply:
<input type="checkbox"/> 5VDC > 2A
<input type="checkbox"/> 8VDC - 36VDC 2A 10W
<input checked="" type="checkbox"/> 110 - 240VAC 50-60Hz 0.2A
Connectivity:
<input type="checkbox"/> Wi-Fi (2.4Hz up to 150 Mbit/s).
<input checked="" type="checkbox"/> GSM (2G SIM F. Range: 868-915MHz).
<input type="checkbox"/> LoRaWan
Communication:
<input type="checkbox"/> Modbus RTU (RS485)
<input type="checkbox"/> Modbus TCP

3. Plug in your device into the power supply.



Wall (terminal/block connector)



Desktop (USB type C)

If you are plugging in the device for the first time, it will enter access point mode. Otherwise, it will display the air quality indicator color.



Access point



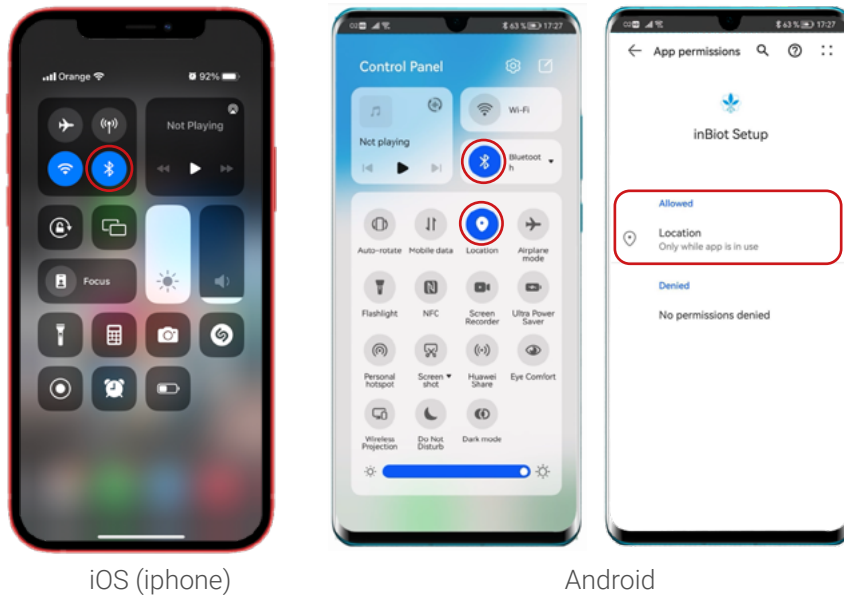
IAQ indicator colors

# General Setup

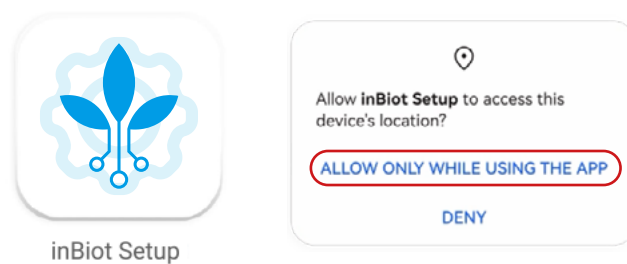
---

## Steps

1. Turn on Bluetooth on your phone. For Android devices, turn on locations services as well and make sure the app is allowed to use them.



2. Open the app inBiot Set-up. If a message requesting location services access pops up, allow the app to use them.



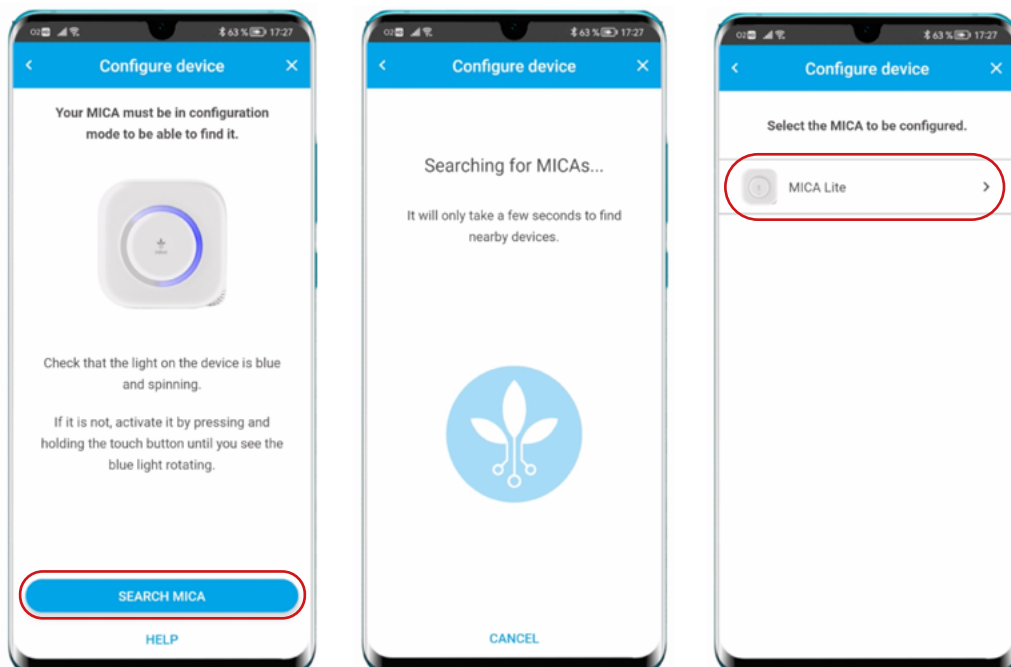
3. To setup a MICA device, click on **CONFIGURE DEVICE**. If you wish to access My inBiot platform, click on **ACCESS MY INBIOT**.



4. For the next step, your device must be in access point mode (blue spinning light). This happens automatically the first time you plug in and setup your device. To force access point mode instead, you must hold the touch button located on the logo at the front cover of the device until the light turns blue and starts spinning.



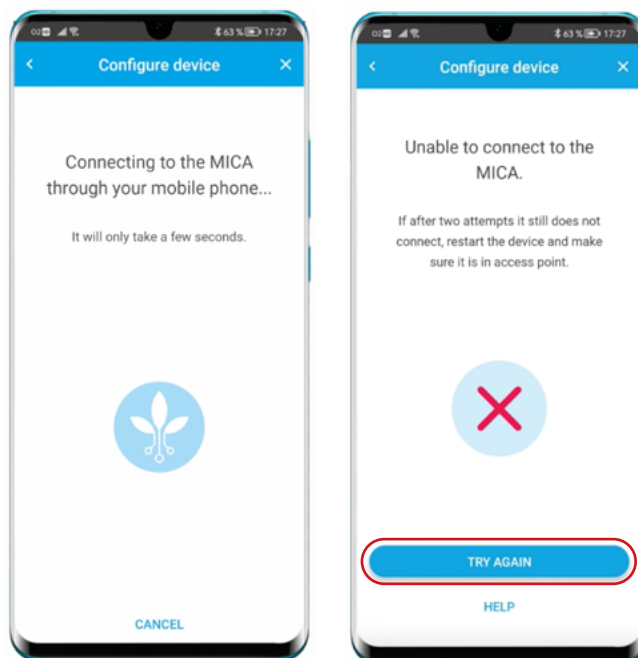
5. Once the device is in access point mode, click on [SEARCH MICA](#) and select the device from the list to establish the connection between the device and your phone.



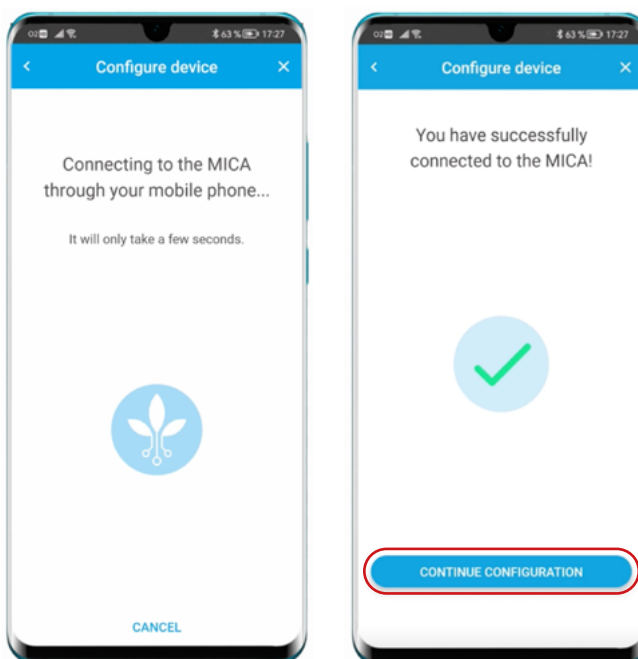


6. If you can't establish a connection with your phone, make sure the device is on [access point mode](#) and try again.

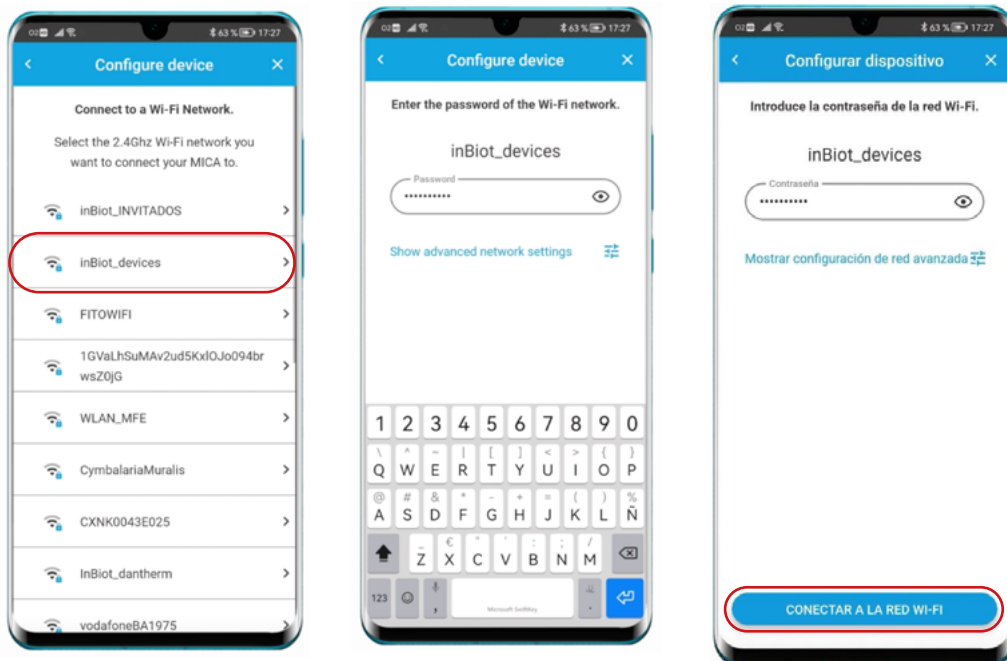
If the error persists, contact our support team through this [form](#).



7. If the connection is successful, this means your device is connected to your phone through Bluetooth and you can now continue with the next step (connecting the device to the desired Wi-Fi network).



8. Next up, select from the list the Wi-Fi network you wish to connect your device to, provide the password, and click on **CONNECT TO THE WI-FI NETWORK**.

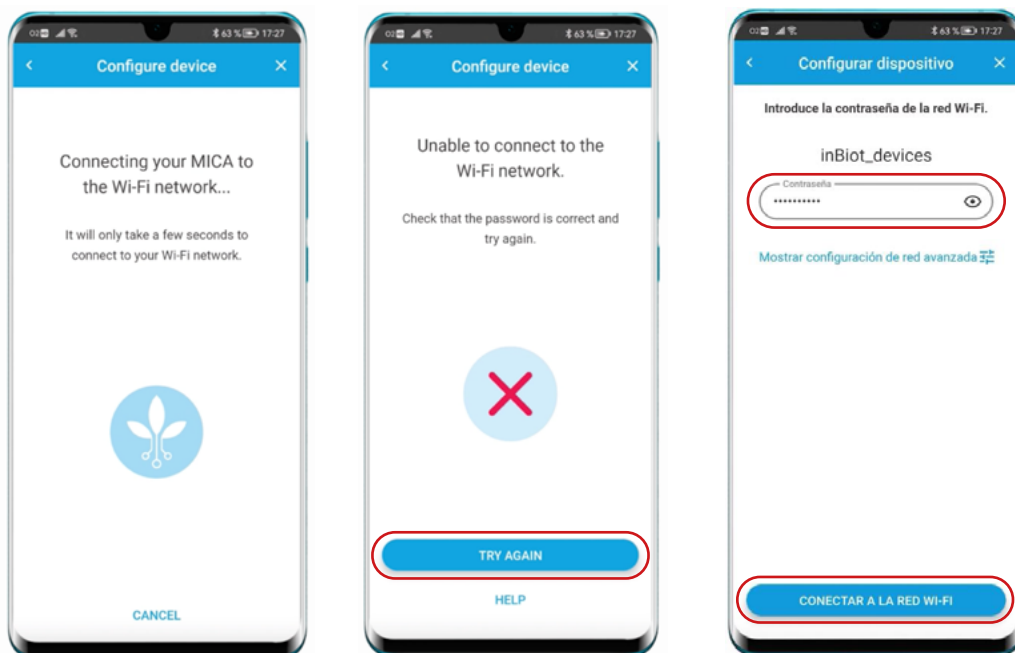



If the network is not on the list, make sure it is a 2.4Ghz network and in range of the device.

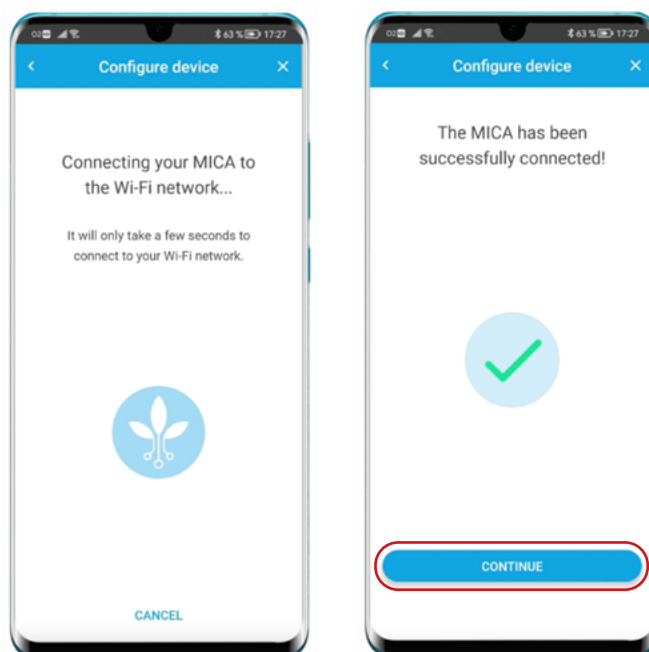
Note: MICA devices cannot connect to 5G networks.

9. If the Wi-Fi connection fails, try again and make sure the password is correct.

If the error persists, contact our support team through this [form](#).



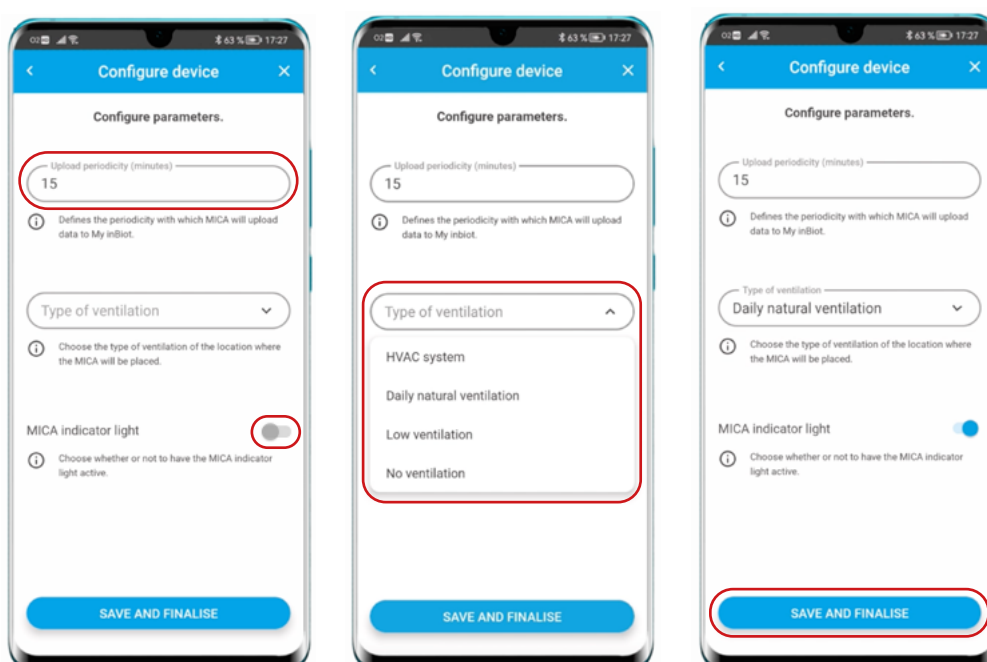
10. If the Wi-Fi connection is successful, click on  to carry on with the setup.




11. To finish up, select your desired MICA settings and then click on the  button.

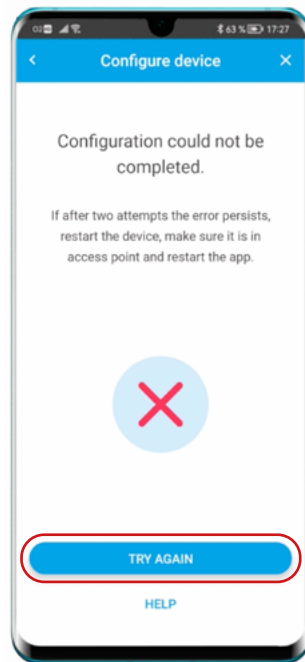
- How often you want the device to send data to the platform.
- The LED indicator light status (on/off).
- The type of ventilation of the room where the device is located.

Note: These and more settings can be modified later on My inBiot platform.



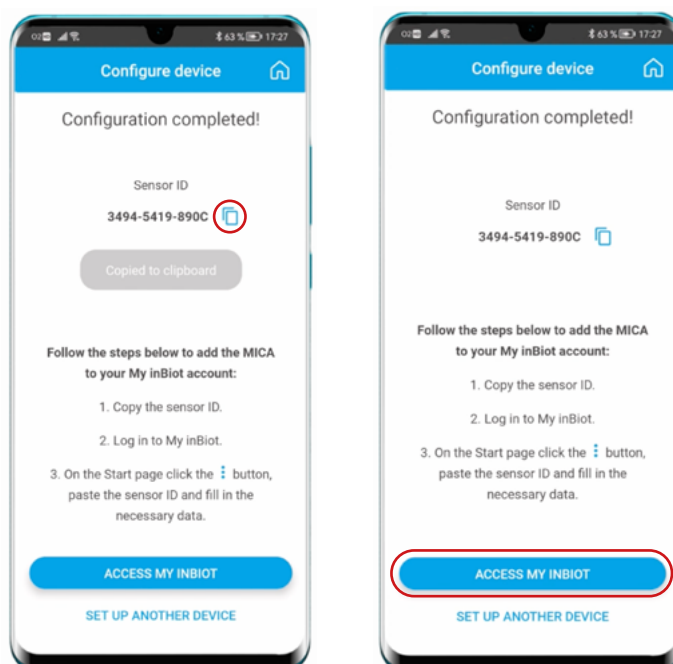
12. If the setup fails, try restarting the setup process by clicking on the  button.

If the error persists, contact our support team through this [form](#).



13. Lastly, if the setup is successful, copy the Sensor ID to later add the device to My inBiot.

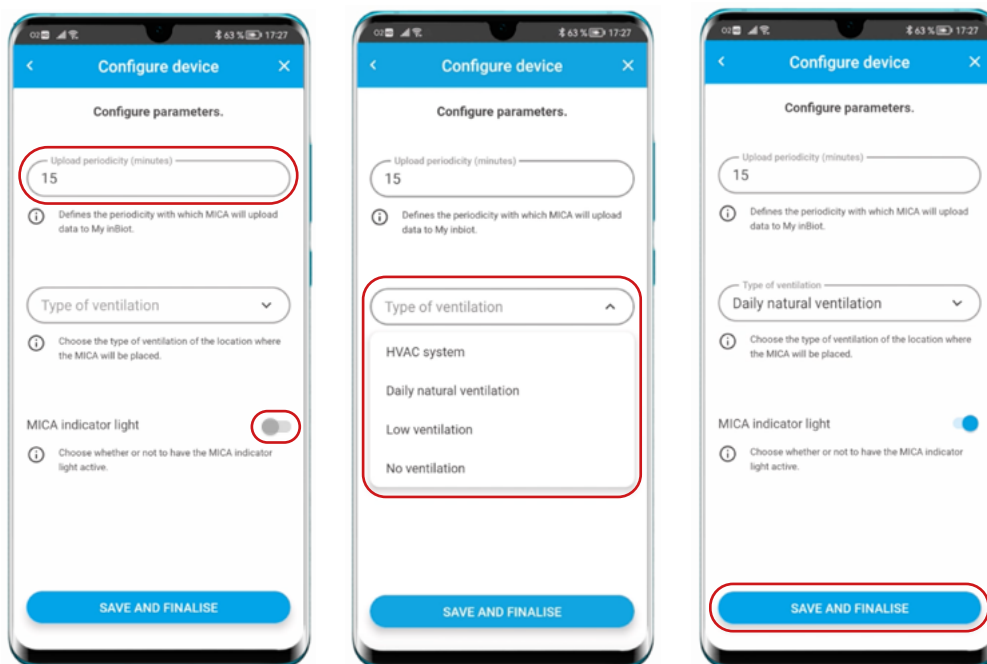
If you wish to add the device to My inBiot immediately, you can access our platform by clicking on the  button. If not, you can set up another device or close the app.



# Modbus RTU Setup

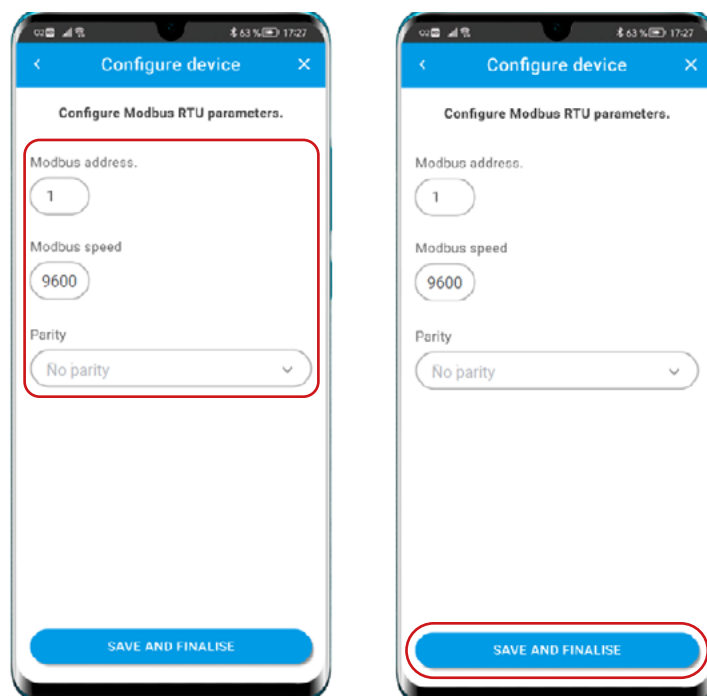
---


1. Follow the [General Setup](#) instructions up until step number 11.



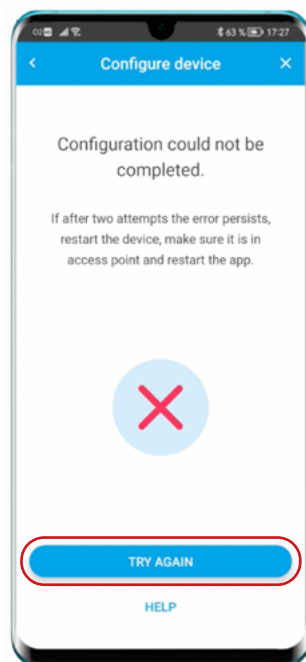
2. Next, you must indicate the Modbus RTU configuration parameters. If you don't know them, you can consult the [Modbus Guide](#).

To finish up, click on .



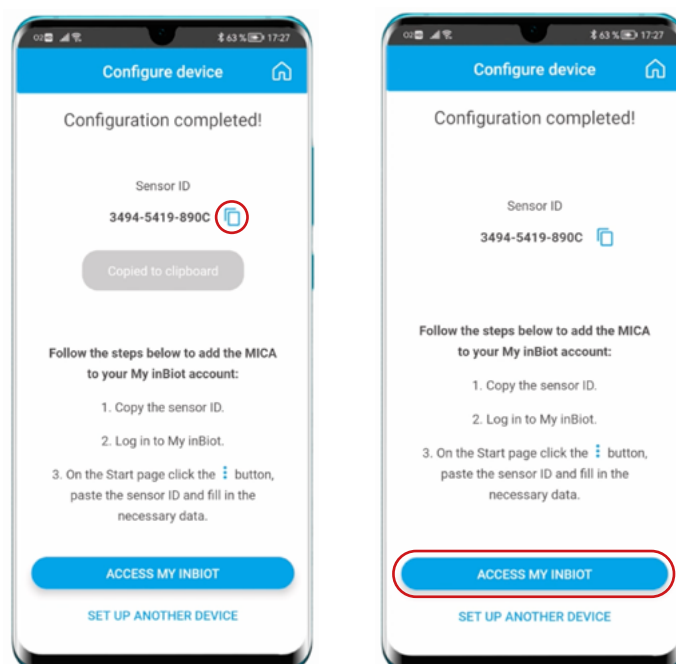
3. If the setup fails, try restarting the setup process by clicking on the  button.

If the error persists, contact our support team through this [form](#).



4. Lastly, If the set up is succesfull, copy the Sensor ID to later add the device to My inBiot.

If you wish to add the device to My inBiot immediately, you can access our platform by clicking on the  button. If not, you can set up another device or close the app.

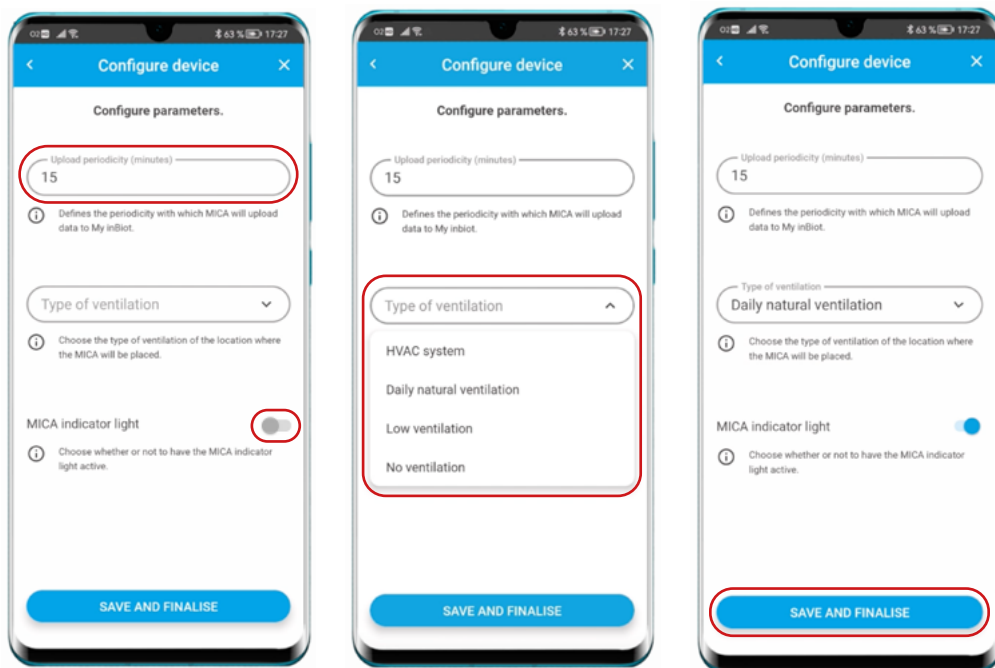


# Modbus TCP Setup

---

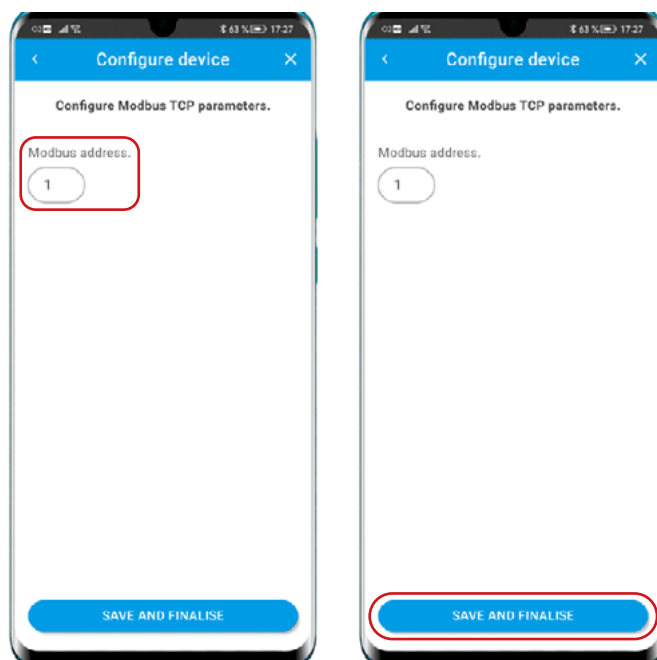



1. Follow the [General Setup](#) instructions up until step number 11.



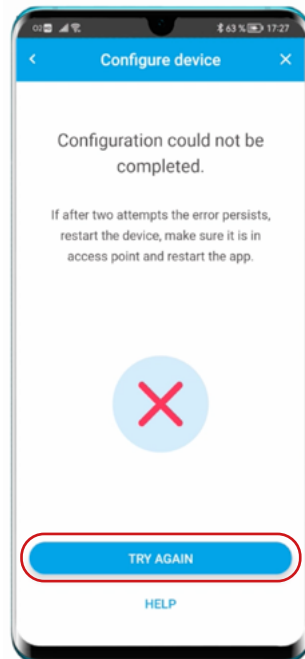
2. Next, you must indicate the Modbus adress. If you don't know it, you can consult the [Modbus Guide](#).

To finish up, click on .



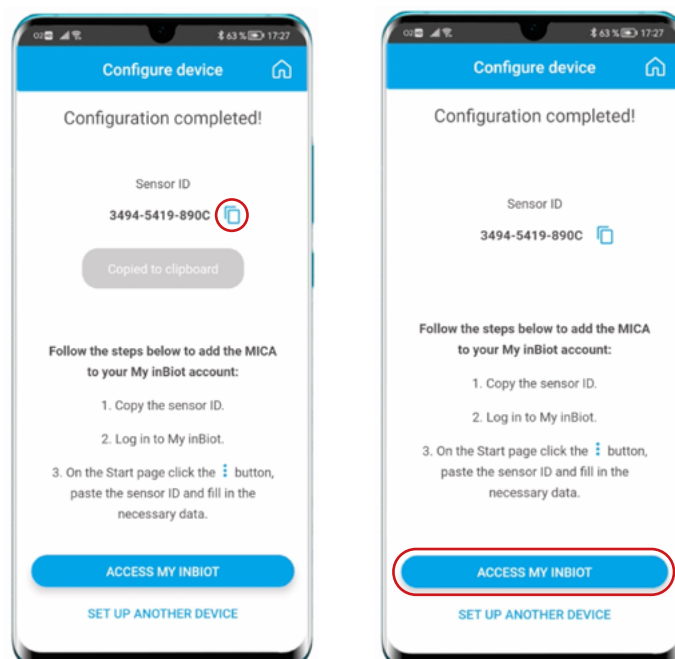
3. If the setup fails, try restarting the setup process by clicking on the  button.

If the error persists, contact our support team through this [form](#).



4. Lastly, If the set up is succesfull, copy the Sensor ID to later add the device to My inBiot.

If you wish to add the device to My inBiot immediately, you can access our platform by clicking on the  button. If not, you can set up another device or close the app.



# Usage Notes

---

1. To set up your MICA, download the [mobile app](#). Make sure “Bluetooth” and “Location” are activated on your phone.
2. To install MICA on the wall, download the [Wall Installation Guide](#).
3. Except for temperature and humidity, MICA's sensors require preheating, so, after connecting the device, it will take several minutes to display accurate values in My inBiot.
4. The CO<sub>2</sub> sensor works under a self-calibration algorithm every 24h, 48h, 7 days or 15 days, therefore, try to keep it in spaces that are regularly ventilated.
5. Our sensors are carefully calibrated at the factory to ensure accurate measurement. This precision will be maintained as long as the recommended sensor renewal time is not exceeded. During the useful life of each sensor, no maintenance is required.
6. MICA is an indoor air quality monitor. The accuracy of the measurement and the useful life of the sensors in outdoor environments are not guaranteed. It is strongly advised not to expose the device to external conditions, as this could cause irreparable damage to the device.
7. Do not blow directly into the device.
8. It's recommended to keep devices at room temperature for at least 24 hours prior to installation to allow any condensation resulting from low temperatures during shipping/storage to evaporate.
9. For Wi-Fi models: The device can only connect to 2.4GHz Wi-Fi networks. 5GHz Wi-Fi networks are not supported. Once installed, check that the configuration of your MICA has been successful and it is connected to the network. Make sure your IT department doesn't use a whitelist, access gateways or firewalls to allow devices on the network. If the devices require any of those to connect, you will need to provide the IT department with the MAC address of the device.
10. MICA devices ventilate both from each side and from the air inlet located on the bottom. It is essential that neither side of the device is covered. Any change in airflow can affect the accuracy of the readings.
11. For any questions, contact the support department through the form on the inBiot [support page](#).



**inBiot**  
Sense your building

[www.inbiot.es](http://www.inbiot.es)

Copyright © inBiot Monitoring SL