

Amcraft CORPORATION

1226 Executive Blvd, Suite 101 • Chesapeake, Virginia
(757) 546-9374 • quignor@flash.net
www.AmcraftCorp.com

★ Awnings

★ Slipcovers

★ P.O.W. Table Setup

★ Table Covers

★ Upholstery

★ Berth/Custom Curtains

★ Herculite Covers

★ Misc. Supplies

★ Signs & Instructions

★ Material



BERTHING CURTAINS & CUSTOM CURTAINS

Embroidery and screen printing available on curtains.
Berthing curtains and curtains meet mil specs.



- ★ **Berth Curtains**
- ★ **Enlisted Berth Curtains**
- ★ **Officer Berth Curtains**
- ★ **CPO Berth Curtains**
- ★ **L-Shape Berth Curtains**
- ★ **Situp Berth Curtains (San Antonio class)**
- ★ **Fan Curtains with Snaps or Velcro®**
- ★ **Custom Curtains**
- ★ **Passageway Curtains**
- ★ **Naugahyde Curtains**
- ★ **Herculite® Curtains**

NOTE: Valances available with custom curtains
FABRIC : Naugahyde® / Herculite® / Nomex®

CHAIR COVERS

Embroidery and screen printing available on all chair covers.
Chair covers meet mil specs.



- ★ Wardroom Chair Covers
- ★ CPO Chair Covers
- ★ Swivel Chair Covers with 2" Shipboard Foam



★ Slide Over Bridge Chair Backs with Custom Embroidery

Samples:

- ★ CO Command at Sea Pin
- ★ XO SWO Pin
- ★ Commodore Captain's Eagle
- ★ Ships Crest
- ★ CIC Chair Covers Slide Over Backs with Pocket
- ★ Ready Room Chair Head Rest Covers



CUSTOM COVERS

Embroidery and screen printing available on all custom covers.
Custom covers meet mil specs.

- ★ Parking Sign Covers
- ★ Podium/Picture Board
- ★ Shoring Covers
- ★ Cable Covers
- ★ Emergency Outlet Covers
- ★ SCBA Covers
- ★ Equipment Covers
- ★ Battery Charge Covers



If you do not see what you are looking for...PLEASE ASK!

P.O.W. TABLES



UPHOLSTERY

- ★ Provide New Foam Ship Board
- ★ Mess Deck Booths with Design
- ★ Bridge Chairs / Barber Chairs
- ★ Control Chairs / Sofas
- ★ Benches and Cushions



★ NEW ITEMS ★

- ★ Wardroom / CPO Chairs
- ★ Arm Chairs / Armless Chairs
- ★ Sofas 1 Seater / 2 Seater / 3 Seater
- ★ Sectionals
- ★ Mess Deck Booth Seat and Back Pans
- ★ Bridge Chair Parts

SERVING LINE

AWNINGS

Embroidery and screen printing available on all awnings.
Awnings meet mil specs.



- ★ **Custom Fitted**
- ★ **Custom Colors**
- ★ **Fabricated Frames**

If you do not see what you are looking for...PLEASE ASK!

TABLE COVERS & TABLECLOTHS

Embroidery and screen printing available
on all table covers and tablecloths.
Table covers and tablecloths *meet mil specs.*

- ★ Custom Naugahyde® Table Covers
- ★ Table Cloths (Oval, Round, Square and Odd Shapes)
- ★ Napkins (17" x 17" or 21" x 21", Various Colors)
- ★ Placemats (Different Shapes)
- ★ Skirting (Clip-On or Velcro®)

Large Selection of Naugahyde® and Table Cloth Fabric



FOOD SERVICE INSTRUCTION SIGNS

Based on NAVSUP-486 Rev. 9 with Imprinted Ship Crest.
Made of Aluminum with Double Stick Tape.

★ Large Signs Are 8½" x 11"

★ Small Signs Are 5½" x 8½"



NAVSUP P-486, Rev 9 Food Service Management, Volume Two

8217 WALK IN REEFER
OPERATING AND SAFETY PROCEDURES

WALK IN REEFER

1. GENERAL. The following steps shall be taken to ensure safe operations of walk-in reefers:
 - For maximum use and performance, the refrigerator must be installed and operated properly. Assembly/installation must be in strict accordance with the manufacturer's instructions.
 - Operators of the unit must be thoroughly familiar with the various features of the unit.
 - The door latch is equipped with provisions for padlocking and with an inside door release mechanism that enables the door to be opened from the inside even when the latch is padlocked.

NOTE: An inside door release instruction label is attached to door interior. **DO NOT REMOVE LABEL FOR ANY REASON.**

- The strike part of the latch is adjustable to compensate for gasket wear. Loosen the strike and move the sliding tongue forward or backward as required. Tighten the strike.
- The alarm control shall be set to operate the warning lamp at 61°F.
- The hold-back hook holds the door in the open position. To release the door, pull the hook lever.
- The condensing unit, with compressor and motor, is lubrication-sealed and is equipped with an overload protector.
- The evaporator is of the forced circulation type in that the accompanying fan circulates the coils of the evaporator and re-circulates the air.

CAUTION: Do not load the refrigerator too close to the blower coil; this blocks the air flow.

- The refrigerator cabinet is equipped with an automatic defrosting system to eliminate the need for manual defrosting.

2. OPERATING. The following steps shall be taken to operate a walk-in reefer:
 - Before starting the unit: open the liquid valve, suction valve, and discharge valve at the junction box.
 - The pressure control is factory set to maintain a cabinet temperature of 35°F. If necessary, the temperature must not go below 32°F or the evaporator coil will freeze.
 - If a compressor operates for too long or too often, it generally is because of low refrigerant charge though the temperature is cold enough. Refer to the operator's manual.
3. CLEANING. The following steps shall be taken to clean a walk-in reefer:
 - To clean the interior of the refrigerator use a solution of baking soda or vinegar. These compounds act as deodorants and do not scratch or mar the finish.
 - To prepare a soda solution: mix one-half teaspoon of ordinary baking soda with one quart of water.
 - Clean the exterior of the cabinet with clear water or a weak solution of bleach and water.
 - Once a week, wash the door gasket rubber with mild soap and water followed by a clear water rinse.

NOTE: Grease accumulation on door gaskets shortens the life of the gasket.



NAVSUP P-486, Rev 9 Food Service Management, Volume Two

8233 GRIDDLE OPERATING
AND SAFETY PROCEDURES

GRIDDLE

The following safety precautions shall be taken when operating griddles:

- The griddle has separate thermostatic controls for each 9" to 12" inches of width. Turn on only the amount of griddle surface required for the operation. Set thermostats to the required temperature and allow the griddle to preheat for approximately 20 minutes.
- Turn all thermostats to "OFF" when not in use. Allowing a griddle to heat unused for long period of time wastes energy and results in premature burn-out of heating elements.
- Periodically check the calibration of the thermostats by using an accurate surface thermometer or pyrometer. Have thermostats calibrated as necessary.

Step

1. Shut off power.
2. Turn off heat.
Remove carbonized grease (after each use).
3. Clean grease and/or drain troughs.
4. Empty grease receptacles.
5. Scrub guards, front, and sides of griddle.

Procedure

Use manual switch.

NEVER clean the surface plate while it is hot. Allow the plate to cool. NEVER POUR WATER ON A HOT PLATE. Scrape the surface with a spatula or pancake turner. Wipe clean with dry paper towels. Use a pumice stone block to clean hard to remove burned areas on the plate after each use.

Pour hot detergent solution into the small drain and brush. Rinse with hot water.

Remove grease from receptacles and clean with hot detergent solution; rinse and dry.

Using hot detergent solution, wash off grease, splatter, and film. Rinse and dry.

NUTRITIONAL INFORMATION SIGNS

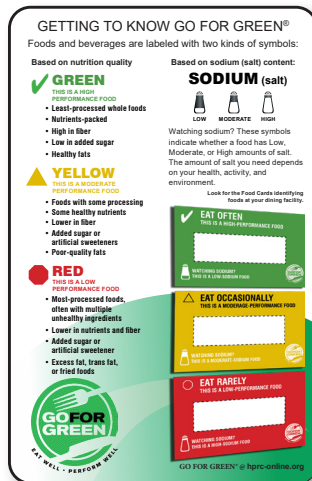


★ 8½" x 11" Signs In Sets of 5

Made of Aluminum with Double Stick Tape.

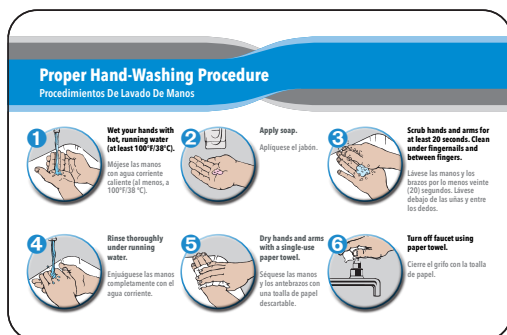
Plastic "Go Green" Signs To Place On The Tables

5½" x 8½" Round Corner
Plastic Printed On Both Sides.

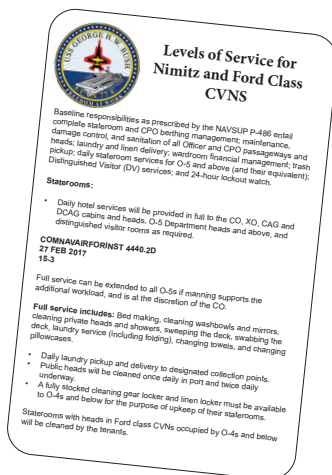
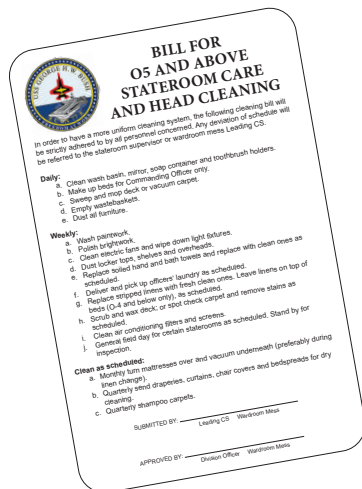


Hand Washing Signs

5½" x 8½" Round Corner
Made of Aluminum with
Double Stick Tape.



MISCELLANEOUS INFORMATION SIGNS



Hotel/Store Signs

5½" x 8½" Round Corner
Made of Aluminum with
Double Stick Tape.



Trash Separation Signs

8" x 8" Round Corner
Made of Aluminum with
Double Stick Tape.



Heimlich Maneuver Sign

5½" x 8½" Round Corner
Made of Aluminum with
Double Stick Tape.

If you do not see what you are looking for...PLEASE ASK!
We can make any sign in a variety of materials.

MISCELLANEOUS SUPPLIES & FABRIC

- ★ Shipboard Foam
- ★ Berthing Curtain Track
- ★ Curtain Track
- ★ Chair Glides
- ★ Hook-Loop Velcro®
- ★ Curtain Glides J-Hooks
- ★ Snaps
- ★ Grommets
- ★ Swivels
- ★ UPH Clips
- ★ Line Cord
- ★ and More!

MATERIAL



- ★ Naugahyde®
- ★ Herculite®
- ★ Nomex®

Amcraft
CORPORATION

1226 Executive Blvd, Suite 101 • Chesapeake, Virginia
(757) 546-9374 • quignor@flash.net
www.AmcraftCorp.com