



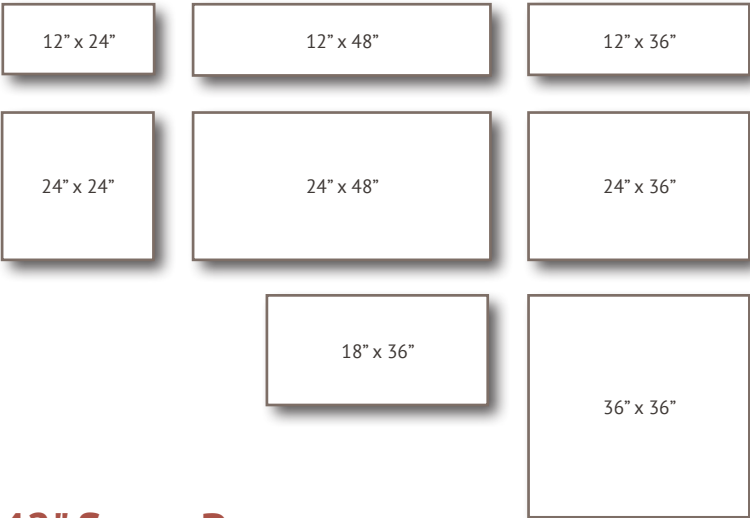
CASTOHN®
true to form

Large Format Pavers

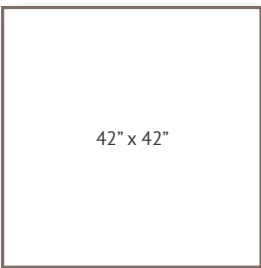
Contents



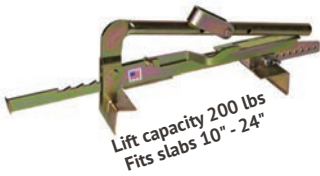
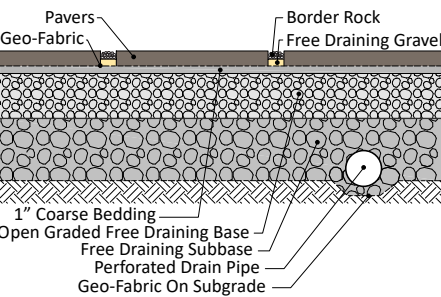
Olympic Paver™ Collection



42" Super Paver



Installation & Tools



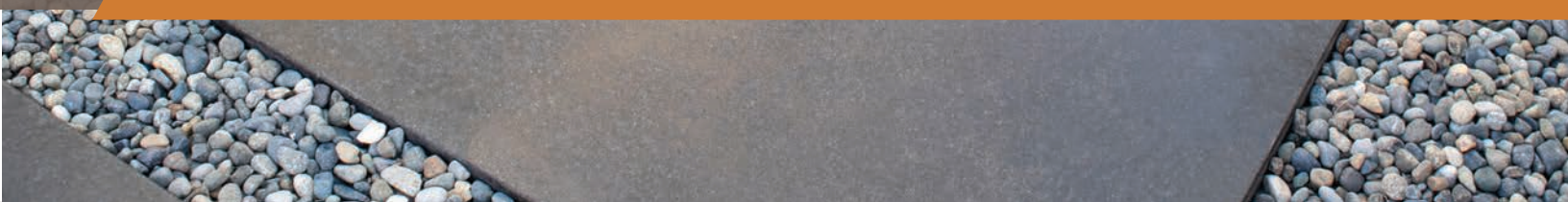


DESIGN TREND

- Clean Lines
- Grand Scale
- Contemporary
- Timeless

WHY LARGE FORMAT PAVERS?

- Low-maintenance – fewer cracks for weeds
- Nonslip, exposed sand finish
- Eco-friendly, permeable applications
- Multiple size collection, ready to install
- Cured to strength in a controlled environment
- 1 large paver replaces 30-40 small, machine-made pavers



Small Dry Cast Pavers



Machine made, small, coarse,
weed prone, busy (many joints)
8 seconds in the mold

vs.

Large Wet Cast Pavers



Hand poured, clean edges,
straight lines, tight nonslip surfaces
8 hours in the mold

Olympic Paver™ Collection

OLYMPIC PAVER™ COLLECTION



Available Colors:



Charcoal



Natural Grey

Colors may vary, see actual product.

Physical Properties

Compressive strength	>6,000 psi
Flexural strength	>600 psi
Water absorption	<6%
Dimensional Tolerance L & W	±3/16"
Dimensional Thickness	±1/8"

Product Data (nominal sizes)

- 12"x24"x2-1/2" – 2 square feet – 63 pounds
- 12"x36"x2-1/2" – 3 square feet – 95 pounds
- 12"x48"x2-1/2" – 4 square feet – 125 pounds
- 18"x36"x2-1/2" – 4-1/2 square feet – 145 pounds
- 24"x24"x2-1/2" – 4 square feet – 125 pounds
- 24"x36"x2-1/2" – 6 square feet – 190 pounds
- 24"x48"x2-1/2" – 8 square feet – 250 pounds
- 36"x36"x2-1/2" – 9 square feet – 285 pounds
- Actual size is 1/8" inch less in length & width

18" x 36"

36" x 36"

Technical Data: American Society for Testing & Materials (ASTM)

- ASTM C33–Standard Specification for Concrete Aggregates
- ASTM C39–Concrete Compressive Strength
- ASTM C150–Standard Specification for Portland Cement
- ASTM C642–Water Absorption, Density, Voids in Hardened Concrete
- ASTM C979–Pigments for Integrally Colored Concrete

12" x 24"

12" x 48"

12" x 36"

24" x 24"

24" x 48"

24" x 36"

Olympic Paver™ Collection



Pallet (12" x 24")

- 32 pieces per pallet
- 63 pounds each, 2,100 pounds per pallet
- 64 square feet per pallet



Pallet (12" x 36")

- 24 pieces per pallet
- 95 pounds each, 2,300 pounds per pallet
- 72 square feet per pallet



Pallet (12" x 48")

- 24 pieces per pallet
- 125 pounds each, 3,100 pounds per pallet
- 96 square feet per pallet



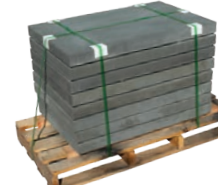
Pallet (18" x 36")

- 16 pieces per pallet
- 145 pounds each, 2,400 pounds per pallet
- 72 square feet per pallet



Pallet (24" x 24")

- 16 pieces per pallet
- 125 pounds each, 2,100 pounds per pallet
- 64 square feet per pallet



Pallet (24" x 36")

- 8 pieces per pallet
- 190 pounds each, 1,600 pounds per pallet
- 48 square feet per pallet



Pallet (24" x 48")

- 8 pieces per pallet
- 250 pounds each, 2,100 pounds per pallet
- 64 square feet per pallet



Pallet (36" x 36")

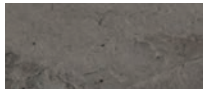
- 8 pieces per pallet
- 285 pounds each, 2,300 pounds per pallet
- 72 square feet per pallet

42" Super Paver



42" SUPER PAVER

Available Color:



Charcoal

Colors may vary, see actual product.

Made to Order:



Natural Grey

Physical Properties

Compressive strength	>5,000 psi
Flexural strength	>600 psi
Water absorption	<6%
Dimensional Tolerance L & W	±3/16"
Dimensional Thickness	±1/8"

Technical Data: American Society for Testing & Materials (ASTM)

- ASTM C33–Standard Specification for Concrete Aggregates
- ASTM C39–Concrete Compressive Strength
- ASTM C150–Standard Specification for Portland Cement
- ASTM C642–Water Absorption, Density, Voids in Hardened Concrete
- ASTM C979–Pigments for Integrally Colored Concrete

Features

- Flamed stone texture means no formwork or on-site finishing needed
- Fast installation, install year-round in any weather
- Factory controlled cure for longer life
- Slip-resistant textured surface

Product Data (nominal size)

- 42" x 42" x 4"
- 12-1/4 square feet
- 600 pounds
- Actual size is 1/8" inch less in length & width

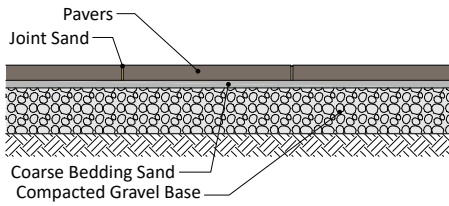
Pallet

- 6 pieces per pallet
- 73-1/2 square feet per pallet
- 3,600 pounds per pallet



42" x 42"

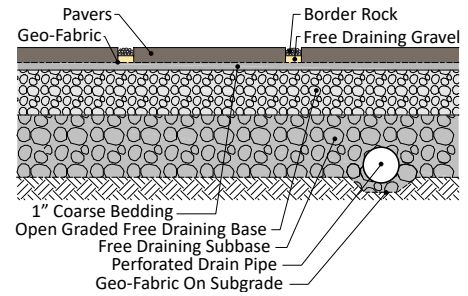
Install Examples



Sand Set



Pedestal Set



Permeable Set

Installations shown above are examples only. Consult a design professional for site specific installation requirements.

Installation

Installation should meet all local building code requirements.

Handling Large Pavers

- Handle with care. Avoid damaging large pavers with forklifts and lifting equipment/tools.
- Store pallets of pavers in single-height rows. DO NOT STACK PALLETS OF PAVERS
- Do not push pallets against each other with forklifts or other equipment.

Installation

- Lift pavers carefully by hand or with lifting equipment. Do not drag one paver across the top of another paver. Lift in way that will not chip the edges of the pavers.
- Install with a minimum of ¼" joints to ease installation and alignment. Proper joints will help with alignment and prevent chipping.
- Avoid "bumping" or contacting adjacent pavers when installing. "Bumping" pavers can cause edge chips and scratches on the surface.
- Protect pavers during the construction process. Brush off all dirt, sand and gravel from installed pavers and cover with a protective landscape fabric or other protective material that will not stain the pavers.

Cleaning

- Wash all dirt and construction debris with the mildest cleaning method that works. Test clean a small inconspicuous area to determine what method works best before cleaning the entire project.
- CAUTION – Some cleaning techniques and products can damage the surface of the pavers and alter the appearance. Castohn does NOT recommend the use of a pressure washer to clean large pavers.
- If using polymeric sand, ensure pavers are thoroughly clean and dry prior to sealing.

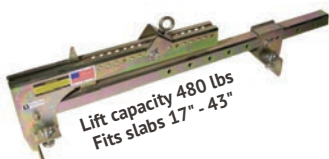
Sealing

- Large pavers can be installed and left unsealed in many applications. However, exterior applications will weather over time and age. Some sealers will help protect the surface from water penetration and even enhance the color of the pavers. Some sealers can also help with preventing staining from food or beverage spills.
- If a sealer is to be used, always test a small inconspicuous area with the sealer to ensure it will perform as anticipated. The WRONG sealer can negatively impact the appearance of the large paver installation. Always test and follow manufacturer's recommendations for installing the sealer.

Joint Sand

- The usage of joint sand can be tricky with high end pavers like these. We do not recommend most polymeric joint sands for this exposed sand product as they may cause residual hazing on the surface. Please consult with your Castohn representative for further information.

Tools



Large Slab Lifter



Slab Lifter



Vacuum Lift
(Example)



Lifting Straps



CASTOHN[®]
true to form

West Region

6801 South Adams Street • Tacoma, WA 98409

Ph 253.830.3366 E Info@Castohn.com

6001 Power Inn Road, Bldg. 7 • Sacramento, CA 95824

Ph 916.539.0654

[Castohn.com](https://www.Castohn.com)