



What is the Draft Environmental Impact Report for the Delta Conveyance Project?

The Draft Environmental Impact Report (EIR) for the Delta Conveyance Project was prepared in compliance with the California Environmental Quality Act (CEQA) and evaluates and discloses the potential environmental impacts of the proposed project and alternatives. It also identifies associated feasible mitigation measures to avoid, minimize, or otherwise offset potentially significant impacts. The proposed project includes modernizing the water transport infrastructure in the Sacramento-San Joaquin Delta (Delta) by adding new facilities in the north Delta to divert water and upgrading the current system to include a tunnel for the movement of State Water Project (SWP) water supplies.

The U.S. Army Corps of Engineers (USACE) as a federal permitting agency is required to comply with a similar environmental disclosure law. Accordingly, USACE is preparing an Environmental Impact Statement (EIS) for the proposed Delta Conveyance Project in compliance with the National Environmental Policy Act (NEPA).

PROJECT PURPOSE

The Department of Water Resources (DWR) is proposing the Delta Conveyance Project to modernize the SWP water transport infrastructure in the Delta to restore and protect the reliability of this important state water supply.

PROJECT OBJECTIVES

- Address the effects of sea level rise and climate change
- Minimize water supply disruption caused by an earthquake
- Protect the ability of the SWP to reliably deliver water
- Provide operational flexibility to improve aquatic conditions in the Delta

ENVIRONMENTAL REVIEW PROCESS TIMELINE

CEQA/NEPA

Prepare Draft EIR and Draft EIS

Public review period

Final EIR, Final EIS, ROD, and NOD

2020

2021

2022

2023

PROPOSED PROJECT & ALTERNATIVES

The Delta Conveyance Project Draft EIR evaluates eight alternatives in addition to the proposed project and a no project alternative, which describes likely conditions if the Delta Conveyance Project is not implemented. To be evaluated in the Draft EIR, alternatives must be potentially feasible and meet most of the project's objectives and avoid or reduce potential significant environmental impacts of the proposed project. Details regarding the proposed project and various alternatives analyzed are on page 2.

The proposed project and all action alternatives would result in a dual-conveyance system in the Delta with the addition of new intakes in the north and continued use of the existing intakes in the southern Delta, providing greater operational flexibility.



The Proposed Project: Also referred to as the “Bethany Reservoir Alternative,” the proposed project includes constructing:

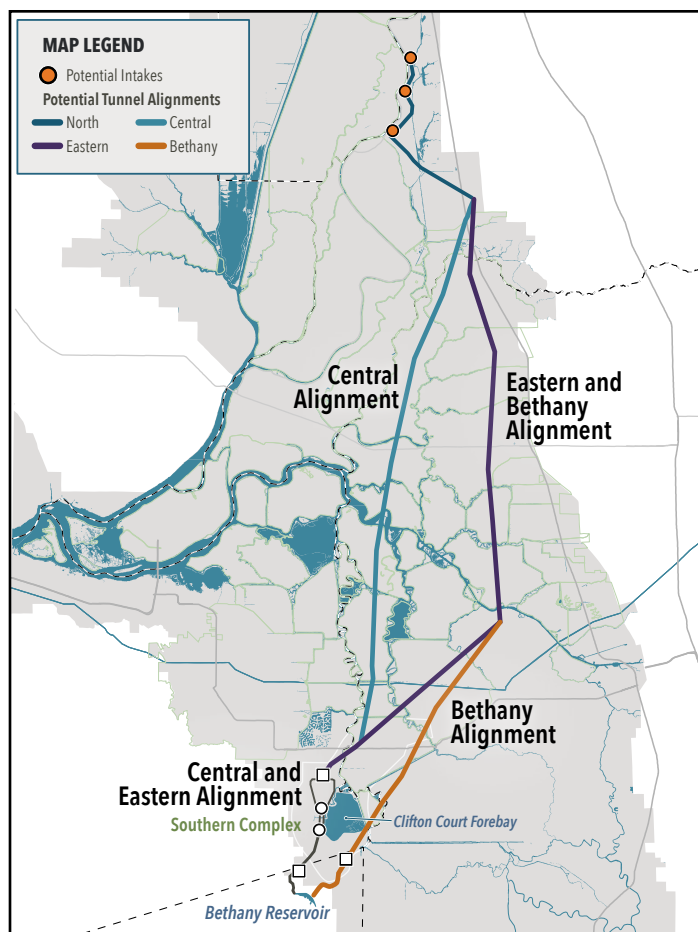
- Two new 3,000 cubic feet per second (cfs) intake facilities in the north Delta to divert water, for a total capacity of 6,000 cfs
- One below ground tunnel to convey that water from the new intakes following the Eastern Alignment, ending at the existing Bethany Reservoir on the California Aqueduct
- A new pumping plant that connects the tunnel directly to the Bethany Reservoir

Action Alternatives: Eight conveyance alternatives that include constructing:

- One, two or three new intakes in the north Delta
- Four capacity options ranging from 3,000 cfs - 7,500 cfs
- One new tunnel following the Central or Eastern Alignment
- New facilities in the south Delta at the Southern Complex near Clifton Court Forebay

The No Project Alternative: As required by CEQA, the No Project Alternative includes:

- Likely conditions if the project is not implemented, including reasonably foreseeable changes in existing conditions and potential alternate actions that may be taken absent a project, such as increased conservation, recycling and desalination
 - These alternative actions were screened out as standalone alternatives because they don’t address the fundamental project purpose
 - The Draft EIR presents the potential effects of not approving an action alternative (the “No Project” Alternative)



**All proposed project details are subject to refinement. No final decisions will be made until the conclusion of the environmental review process.*

RESOURCES ANALYZED

- | | |
|------------------------------------|--|
| • Surface Water | • Cultural Resources |
| • Water Supply | • Transportation |
| • Flood Protection | • Public Services and Utilities |
| • Groundwater | • Energy |
| • Water Quality | • Air Quality and Greenhouse Gas Emissions |
| • Geology and Seismicity | • Noise |
| • Soils | • Hazardous Materials and Wildfire |
| • Fish and Aquatic Resources | • Public Health |
| • Terrestrial Biological Resources | • Minerals |
| • Land Use | • Paleontological Resources |
| • Agriculture | • Environmental Justice |
| • Recreation | • Climate Change |
| • Socioeconomics | • Growth Inducement |
| • Aesthetics and Visual Resources | • Tribal Cultural Resources |

HOW TO COMMENT

Public Review and Comment Period:
July 27, 2022 - December 16, 2022

All comments will be considered by DWR, and all substantive comments will be responded to in the Final EIR and will help inform decision makers.



Email: deltaconveyancecomments@water.ca.gov

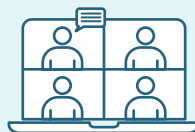


Online: www.deltaconveyanceproject.com



Mail: Department of Water Resources
Attention: Delta Conveyance Office
P.O. Box 942836
Sacramento, CA 94236-0001

Three virtual public hearings will be held to take verbal public comments on the Draft EIR.



- Tuesday, September 13, 2022, 9:00 am to 11:00 am
- Thursday, September 22, 2022, 12:00 pm to 2:00 pm
- Wednesday, September 28, 2022, 5:30 pm to 7:30 pm

Visit www.deltaconveyanceproject.com for more hearing information.

