

Postgraduate Development Programme

2022/23



02

Welcome



The Postgraduate Development Programme builds the skills, confidence and motivation of post-graduate students. Workshops prepare participants to become social and professional leaders in their field.

AccessEd is an international education charity that works to widen access to university and support graduates and post-graduates in their journeys.

The Postgraduate Development Programme helps universities develop their post-graduates in key areas needed to complete their studies, excel in their long-term career or research ambitions, and have social impact beyond their degree.

As a social impact charity established by teachers and former researchers to train post-graduates, we have a track record of maximising student engagement and supporting them to navigate their degree and beyond.

We specialise in post-graduate development but can work at a variety of degree stages.

AccessEd has developed its suite of courses through delivery to UK universities and Scholarship groups.

Working with a set of highly qualified trainers with expertise in social impact, researcher excellence, international students, social enterprise set up and corporate worlds, AccessEd is well placed to deliver a unique set of training that draws on real-world knowledge and equips graduates with skills for success.

Yours sincerely,

Katie Booth
Managing Director, AccessEd

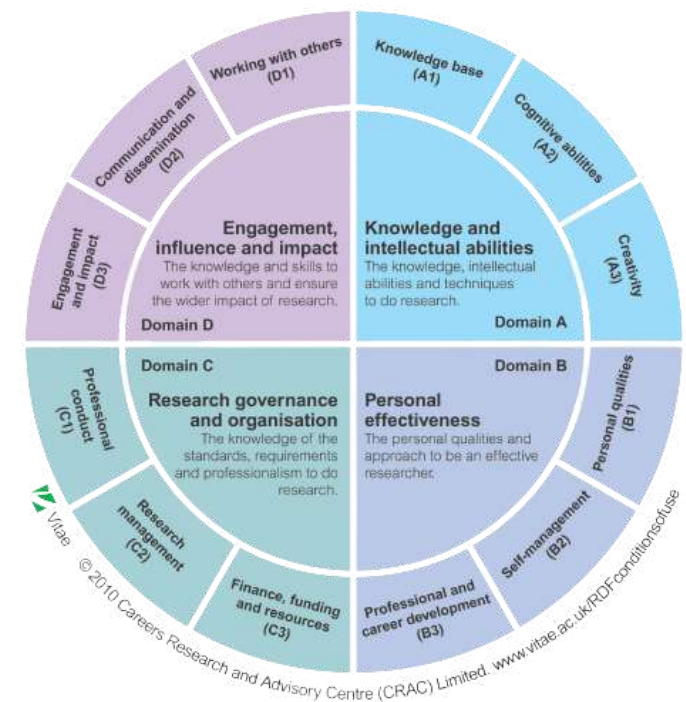
03

Research Development Framework

The Postgraduate Development Programme is open to Masters students, PhD students and postdoctoral researchers. It is designed to support students to maximise their time during their degree and prepare them to make an impact afterwards.

There are over 30 workshops and universities can design courses across 4 curricular strands.

The training programme draws on the expertise of academics, seasoned professionals with backgrounds in working with world-leading private sector, political and non-governmental organisations combined with international university student training experience. This offers opportunities to broaden knowledge and skills, following the themes in the Researcher Development Framework (RDF) – the most comprehensive and nationally-recognised document establishing the desirable standards of practice for successful researchers.



04

What we offer



- ✓ Suite of courses developed through historic delivery to UK universities and UK Scholarship groups
- ✓ Highly qualified trainers with expertise in student retention, social impact, university widening participation and international students
- ✓ Unique hands-on training structure that draws on real-world knowledge and practical experience to equip students with skills for success
- ✓ Student access to future development opportunities and participation in AccessEd's international education programmes
- ✓ Courses have been delivered digitally throughout Covid-19; adapted and tested for high-quality online delivery and cater to student needs

Our 4 Curricula Strands for training

**RESEARCHER SKILLS
FOR SUCCESS**

**SOCIAL IMPACT AND
LEADERSHIP**

**INTERNATIONAL
EXCELLENCE**

**EMPLOYABILITY,
CAREERS, ENTERPRISE**

05

RESEARCH SKILLS FOR SUCCESS

Presentation skills: basic and advanced



A practical session that focuses on building a research narrative; developing a 3-minute thesis pitch; professional observation of student presentation skills; intonation and presenting with confidence at a basic and advanced level.

Designing your own public engagement activity



A highly interactive workshop that supports students to design a public engagement activity in real time. Participants work both collaboratively and individually to plan their idea, receiving real time feedback to hone their plan.

Research project management



A simple and effective breakdown on how to manage your research degree and make the most of your studies; how to project manage different strands of research; practical tools and methods to use; step-by-step backwards planning for success.

Study skills and managing pressure positively



Supporting students to mindfully manage the stressful pressures of a research degree; how to turn pressure points into positive motivation; practical study tips and tools for managing a busy degree and schedule.

06

RESEARCHER SKILLS FOR SUCCESS



Public engagement: developing your narrative and approach



Developing student narrative structures to explain research to non-expert audiences; identifying individual student P.E goals during post-degree; strategies for engaging the public; designing a draft public engagement plan; communicating impact; build an impact framework for outcomes.

Preparing for publication



The process and techniques for ensuring research is successfully pitched to publishers; networking for publication; tips for revising and resubmitting written drafts for publication; how to engage supervisors and collaborators.

Fundraising: writing bids and securing grants



Exploring good practice for identifying and developing strategic partnerships and best practice in the UK; exploring how networking and collaboration can help research projects; mapping funding opportunities in the UK and researcher country context; writing compelling bids.

The ethical researcher



Using case studies and group discussion to help explore ethics related to research; articulating your own ethical framework for research; appreciating alternate and international points of view; tips for avoiding breaches of ethical conduct.

07

SOCIAL IMPACT AND LEADERSHIP

Leadership and decision making



Leadership models: what an effective leader looks like; motivating and empowering others for impact; coaching cultures and delegation; exploring courageous conversations; reflection of personal leadership style; strategic leadership; how to manage upwards.

Introduction to social enterprise and institutions



Understanding social institutions and social enterprises; how social enterprises work (definition, structure, function); comparison to other social impact models; social enterprise funding; case studies; impact frameworks.

Networking and partnership building



Networking, partnership building and collaboration; how networking can support effective operational, personal and strategic leadership; mapping and planning own networking priorities and actions; stakeholder mapping; understanding personal spheres of influence.

Evaluation and impact measurement



Principles and practice in evaluation and impact monitoring; mapping own vision, mission, objectives; impact evaluation tools and methods for your degree and other projects; creating impact statements and plans.

08

SOCIAL
IMPACT AND
LEADERSHIP
**Strategy planning:
linking research to
impact goals**


A practical session on understanding what real impact looks like in the context of your degree; a step by step walk through to backwards strategic planning; tools and advice for working towards specific impact goals.

**Integrating SDGs
into research and
practice**


This workshop examines the UN Sustainable Development Goals in relation to research. Participants will discuss how their research links to SDGs; how to incorporate SDGs into policy outreach and stakeholder engagement; setting goals for work towards SDGs.

**Theory of Change:
the what, the why
and the how**


Learn what Theory of Change is; examples of how it works in practice; students create their own ToC illustration for a project that could make meaningful change; methodology for researchers to reflect on how/why given interventions lead to specific change.

**Starting your own
social organisation
or project 101**


This workshop goes through 10 fundamental steps for setting up a social organisation or project, including mission and business planning, fundraising, working with a mentor and more. Participants leave with initial plans to take forward.

09

INTERNATIONAL EXCELLENCE

Preparing to study and live in the UK



This workshop covers orientation to the UK; settling into university; university life in the UK; dealing with culture shock; integration socially with peers; what to expect and how to navigate support options.

Cultural intelligence and communication



Adapting to cultural differences and diversity; building cultural intelligence skills; practicing effective communication for varying audiences and situations you'll come across as a university student.

Careers in the UK: interviews and work etiquette



Supporting international students to navigate the UK jobs marketing; typical interview structure; questions often asked by interviewers; expected behaviours and work etiquette once in a job.

Careers in the UK: applications



Helping international students to prepare applications that shine: approaches to CVs and cover letters and how these differ to other countries; communications with HR teams and what to expect; key competencies to communicate.

10

INTERNATIONAL
EXCELLENCE**Working cross-
culturally as a
researcher**

This workshop prepares students for working cross-culturally: interactions with diverse stakeholders and audiences; behaviour expectations and how to manage conflict or pain points effectively and sensitively.

**Research in
international
development**

This session covers applying principles in international development (ID) to writing and research in ID; language in ID; approach for working with development institutions; applying ID principles to the researcher's own country context.

**Imposter
syndrome: sources
and solutions**

Imposter syndrome is common. By definition, researchers have no defined outcome. Work is exposed to continued scrutiny. This session helps students overcome doubt and perfectionism, with strategies to tackle typical behaviours such as procrastination and over-commitment.

**Preparing for
publication in the
UK**

How to go about first publication in the UK: the process and techniques for ensuring successful pitch to publishers; networking for publication; tips for revising and resubmitting written drafts for publication; how to engage supervisors.

11

EMPLOYABILITY, CAREERS, ENTERPRISE



The art of negotiation and influence



Students learn negotiation 101 tips and tricks. Working in a complex organisation or university, and often different cultural contexts, requires skills to overcome resistance to change, influence decision makers and working well with diverse teams.

Developing your professional skill set



This workshop helps student understand and develop critical professional skills: building inner resilience; introduction to assertiveness; influencing skills; working with behaviour you find difficult; effectively managing and organising time.

Translating academic skills for professional success



Identify specialisms and transferable skills; how the public, private, civil society or academic world can benefit from these skills; learning how to access the desired job market; using your academic experience as evidence.

Transitioning from academia to a career



Exploring what your ideal position is and the realities of working inside or outside of academia; building the knowledge and skills for practical transition to the world of professional careers; understanding personal and lifestyle adaptations for the move.

12

EMPLOYABILITY, CAREERS, ENTERPRISE

Writing and communicating in diverse environments



From emails to meetings, this session explores different writing styles and expected outcomes from these; different communication styles for different audiences; typical workplace and university scenarios; different skills for managing and working in diverse environments.

Competency based interviews: questions and practice



Students practice giving answers to questions that typically come up in non-academic interviews; suggestions on how to structure responses; tips and tricks for succeeding at competency based interviews; quick-fire feedback.

Job applications: CV and cover letters for the professional world



A practical guide to organising and structuring academic and non-academic CV; examine how experience and motivation can be best expressed in a cover letter, and explore how to confidently write about professional strengths in a variety of different formats.

Job applications: group tasks and assessments



Participants take part in group tasks and simulation-style assessments increasingly common among employers looking to identify candidates' values and attributes; builds confidence through role play activities; an insider's perspective on the aims of the assessors.

‘Strategy Planning: linking Research to Impact Goals’ training

“Exactly what I needed! Was struggling to backwards plan my research and think about future social impact I want to have after my degree. Gave such a clear structure for doing that.”

– Tanvir, PhD Scholar, Commonwealth Scholarship Commission 2021

14

Why AccessEd?

DIVERSITY OF TRAINERS

AccessEd works with a diverse combination of trainers who have backgrounds in multiple different sectors and professional fields; these are experts with practical experience and knowledge to bring to each session.

UNDERSTAND HOW TO SUPPORT POSTGRADUATE STUDENTS

Our NGO was established by teachers and former researchers to train postgraduates in sharing their expertise and develop their professional skills, so we understand how to support students as they navigate their degree subject and beyond.

WE ARE AN INTERNATIONAL NGO

Our workshops are peer reviewed, expertly designed and based on extensive research and experience working across the globe. We're more than just a training provider: we're an international NGO with expertise in global social impact programmes, involving postgraduates at the core of all our programmes.

ACCESS TO FUTURE DEVELOPMENT OPPORTUNITIES

Training participants will automatically become part of AccessEd's global network of graduates with access to future development opportunities via an online platform.

EXPERTS IN SOCIAL IMPACT & PROGRAMME DESIGN

AccessEd works with social entrepreneurs through an education incubator programme we run internationally. We support entrepreneurs in creating global education initiatives, meaning we have expertise in project design and upskilling socially minded graduates.



15

Meet our trainers

AccessEd's combination of trainers are bring real-life and practical experience in academic, social enterprise, university student outcomes and corporate backgrounds. See examples below of some of the expert trainers we have worked with in the past.

**Dr. Richard Branch**

Richard was a Postdoctoral fellow in Biophysics at Harvard University. Richard has expertise is curriculum advisory and training, with expertise in programming for maximum student impact. Richard specialises in Researcher skills for success, supporting international students, and training/curricula design. Richard was a former teacher on a programme called 'Researchers in Schools' at Lampton School in West London.

**Dr. Rajbir Hazelwood**

Rajbir was the former Head of Student Outcomes at Kings College London, now leading on anti-racism at Kings. Rajbir has expertise in supporting student retention through skills building. Rajbir formerly worked at The Brilliant Club and as an Assistant Professor at Southern Illinois University, as well as a Research and Doctoral Dissertation Fellow at Washington University, St. Lois. Rajbir has a PhD and M.A from Washington University, and BA from Warwick.



16

Meet our
trainers**Ruth Taylor**

Ruth specialises in the process of narrative change, with a particular expertise in values-led cultural transformation. Ruth's background is in campaigning and public engagement, where she has predominately worked in the international development and human rights sectors. Ruth has worked for Common Cause, Child.Org, Amnesty International and others. Outside of my paid roles, Ruth holds numerous trustee positions based in culture change practice.

**Chris Percy**

An experienced trainer with Masters degrees from the University of Cambridge and Birkbeck, Chris has worked for the Department for Education and served as the Director of Academic Strategy at Kings College London. He has held senior business consultancy positions at Roland Berger, CSP Resources, Telos and Firetail. Chris has expertise in employability and careers, public engagement and Researcher social impact.

**Dr. Chris Wilson**

Chris recently worked as the CEO of The Brilliant Club - the UK's largest charity placing PhD students and Post-Docs into state schools to promote fair access to highly-selective universities. Chris has strong expertise in training and the university access landscape, with Bachelors and Masters degrees from the University of Cambridge and PhD from the University of Exeter. Chris specialises in Researcher development and progression.



Our Partners



Trinity College Dublin
Coláiste na Tríonóide, Baile Átha Cliath
The University of Dublin



" 'Public Engagement' training

"I am now more confident in facilitating group discussion where I felt I didn't have the ability before. I have ideas for a public engagement strategy for myself. I was in real need of these skills for my degree."

– Daria, PhD Researcher, University of Sheffield 2018

" 'Writing and Communicating in Diverse Environments' training

"I am new to study in the UK. This helped me to learn different ways of writing and talking to people especially in teams. It's great for my work in the lab and communicating with people from all over the world in my degree."

– Precious, PhD Scholar, Commonwealth Scholarship Commission 2020



18

Our Approach: Workshops



We would be delighted to discuss options for your university. Please contact us at:
hello@access-ed.ngo

Workshops can be incorporated as a part of a university's existing postgraduate development programme, or as standalone sessions of support.

Partners can select workshops of their choice from across the 4 curricula strands. We work with up to 50 students in interactive format. This includes group work, discussions and engagement activities.

Workshops include:

- ✓ Expertise in running a full curricula of interactive workshops with a diverse range of students at different degree levels
- ✓ Tried and tested activities and developmental tasks shown to boost reflection and engagement
- ✓ Discussion of your team's Learning & Development (L&D) goals, which are shared with our trainers
- ✓ Options for pre-reading and pre-engagement activities
- ✓ Flexibility of scheduling around your timetables
- ✓ Evaluation and impact report produced

Pricing

10 workshops £11,500	20 workshops £20,000	30 workshops £29,000
--	--	--

Prices excludes VAT

19

Our Approach: Development Days

Development Days are full-day workshops where partners can select a theme (Researcher Skills; Social Entrepreneurship; Careers & Enterprise; International Excellence) featuring 3-5 workshops across the day.

Currently, we offer up to 2 development days, but we can discuss options upon an initial consultation.

Development Days include:

- ✓ Cross-workshop themes and inter-session discussion points throughout the day
- ✓ Full-day resource and workbook pack for holistic workshop reflections
- ✓ Opportunities for individual reflections with the trainers during break times
- ✓ Intensive deep-dive into one curricula theme, with rapid engagement and immersion

Pricing

1**Development Day**

£6,000

2**Development Days**

£11,500

Prices excludes VAT



20

Benefits

'Transitioning to a Career' training

"It has helped me with being able to evidence planning and course design for other posts within education"

– Finley, PhD Researcher, Kings College London 2017

As an international education NGO and training body we are able to flexibly support your institution and students in obtaining the necessary skills, knowledge and attributes needed to complete their degree, and excel in their long-term career or research ambitions.

- ✓ We take a tailored approach to discussing course and delivery options with our partners.
- ✓ Many different courses across 4 key curricula strands
- ✓ Course content can be mapped to degree stage, be it early degree orientation or mid to late-degree deeper development
- ✓ Courses range from 1.5 - 2.5 hours, providing an overview of the subject area with scope for additional independent learning
- ✓ Engaging graduates in critical discussions to build skills
- ✓ Interactive responses
- ✓ Track and monitor engagement in real time
- ✓ Test learning and understanding through group work
- ✓ Includes Pre-/Post- student surveys





**Kemp House, 160 City Road,
London, EC1V 2NX**

**AccessEd is a charity registered in
England and Wales (#1186355)**