

# IBW Scholars

## Programme Pilot Impact Report 2019



EDUCATION  
ACCESS FOR  
YOUNG PEOPLE IN  
BOTSWANA

*"inspire, innovate, make a difference"*

# Contents

---

02	About Us Partnership and Impact	06	Researcher Development
03	The Botswana Context Pilot Year and Reach	07	Research Based Courses
04	Targeting Criteria	08	Pupil Evaluation
05	Programme Overview	09	Pupil Feedback
		10	Tutor Feedback

## Welcome

---



Dr. Goitseone Lucy Hopkins  
Founder of BW Scholars

Welcome,

We are delighted to present the first BW Scholars Programme summary and impact report for our 2019 pilot.

The pilot in Botswana supported 108 pupils from 8 local schools and orphanages in Kgatleng, North East, Central, South East and the Southern districts of Botswana. For the pilot, we recruited, trained and placed 9 PhD researchers to lead university-style learning experiences to develop the knowledge, skills and ambition of primary and secondary school pupils.

There have been a number of successes in our pilot year, which you can read about throughout this report. To give a few highlights:

- **92%** of students feel more confident in reading and writing skills
- **97%** of learners are more likely to go to university having completed the BW Scholars Programme
- **93%** feel more confident that they know what it will take to get into university.

As our pilot reaches its end, we greatly value hearing feedback, so please do not hesitate to get in touch if you have any feedback about the programme or our impact.

We are looking forward to building partnerships and support that will allow us to extend the work of BW Scholars, and to growing our network and partnerships to fulfil our mission to increase fair access to university for underrepresented young people in Botswana.

Yours sincerely,  
Dr. Goitseone Lucy Hopkins

# About Us

---

BW Scholars exists to increase the number of underrepresented young people at university. We do this by recruiting and training PhD researchers who lead university-style learning experiences to develop the knowledge, skills and ambition of school pupils.

**BW Scholars is part of the AccessEd network.**

AccessEd exists to increase access to university for young people from under-served backgrounds globally. We are creating a global network of partner organisations committed to this mission, sharing with them our expertise, resources and support.

**IBW**Scholars



## Partnerships and Impact

---

AccessEd was established by the co-founders of The Brilliant Club in the UK. The Brilliant Club is an award-winning and independently evaluated charity that exists to increase the number of pupils from under-represented backgrounds progressing to highly-selective universities in the UK. It does this by mobilising the PhD community to share its academic expertise with state schools.

Since its establishment in 2012, The Brilliant Club has grown to a system-level organisation that is now active across the UK, working with over 30 leading universities and over 500 schools. This year, it will mobilise 600 PhD researchers to deliver programs of university-style tutorials in those schools to over 10,000 pupils.

AccessEd was created as a launchpad for The Brilliant Club model to share and tailor it with global educators and to help create some of the fantastic results seen in the UK:

- The average for low-income earners progressing to a highly-selective university in the UK is 11%. An evaluation by the Universities and Colleges Admissions Service (UCAS) found that the average for The Brilliant Club in the UK is 58%.
- The evaluation found that The Brilliant Club has a statistically significant impact on the likelihood a pupil will progress to a highly-selective university, compared to a control group.

AccessEd exists to support education leaders in other countries to design and pilot new university access programmes that mobilise PhD researchers. BW Scholars belongs to the AccessEd network, benefitting from the collective expertise of researcher and practitioners engaged with fair access to higher education globally.

# The Botswana Context

Globally, only 1% of the poorest young adults have spent more than 4 years in higher education compared to 20% of the richest.

In Botswana today, young people face multiple barriers to accessing higher education, resulting in a low secondary to tertiary transition rate of 63.8%.

Following interest from education leaders in Botswana in The Brilliant Club model, BW Scholars was established in March 2019.

The programme was designed by AccessEd in collaboration with school and non-profit partners.

BW Scholars aims to increase the number of learners from under-represented backgrounds progressing to university. It does this by mobilising the Botswana research community to share its expertise with schools.

## Pilot Year Reach

### Partnerships

In 2019, BW Scholars worked with university and non-profit partners:



### Scale

In 2019, BW Scholars supported:

9

Researchers to become BW Scholars PhD/MA tutors

108

Young people to complete the programme

126

Hours delivered of university-style tutorials

### Targeting

In 2019, BW Scholars worked with:

100%

of learners are Rural Area Dwellers (RAB), Orphan and Vulnerable Children (OVC) or have no parental history of higher education

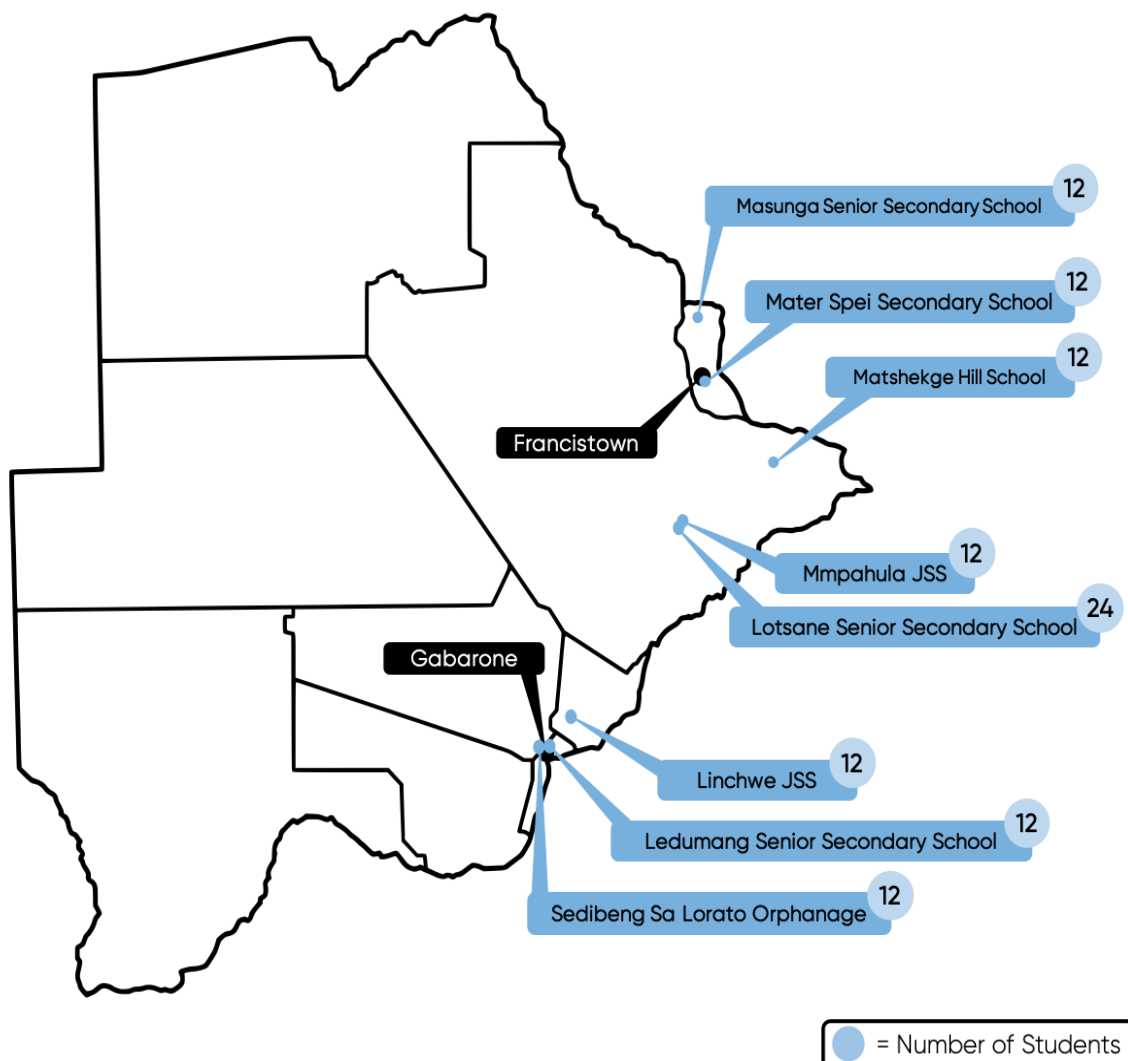
- Masunga Senior Secondary School
- Mmaphula Junior Secondary School
- Lotsane Senior Secondary School
- Sedibeng Sa Lorato Orphanage
- Ledumang Senior Secondary School
- Matspei Senior Secondary School
- Matshekge Hill Senior Secondary School
- Linchwe Junior Secondary School

# Targeting Criteria

The Botswana Scholars Programme is aimed at young people from under-represented backgrounds. All pupils enrolled are pupils that the school has determined meet at least one of the following criteria:

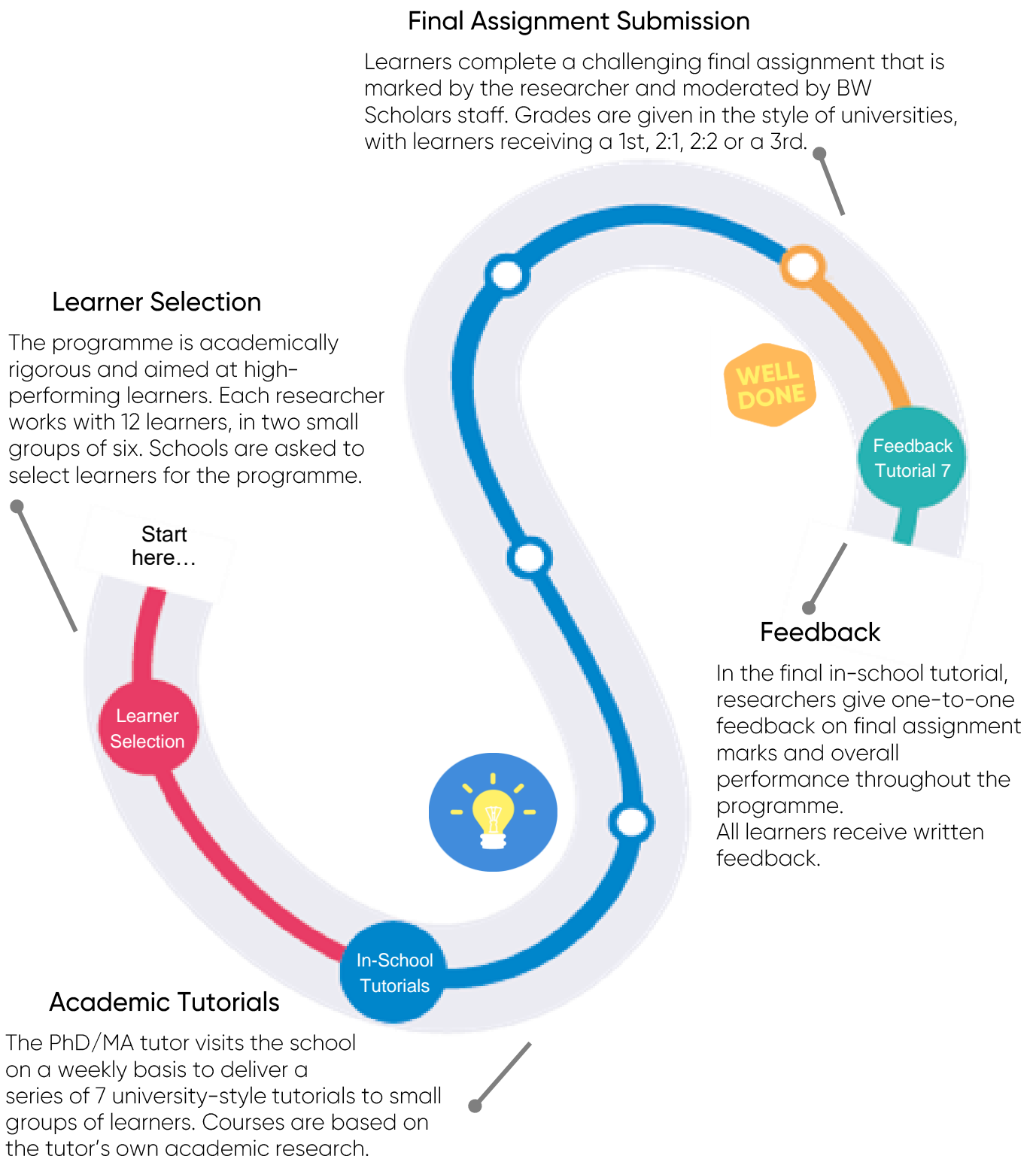
- Remote Area Dwellers (RAD)
- Orphan and Vulnerable Children (OVC)
- No parental history of higher education

The pilot in Botswana supported 108 pupils from 8 local schools and orphanages in Kgatleng, North East, Central, South East and the Southern districts of Botswana.



# Programme Overview

The BW Scholars programme is designed to give young people an authentic experience of university. From being taught by postgraduate tutors, to studying undergraduate-style topics, we aim to break down barriers to university. The diagram below shows the 'learner journey' through a BW Scholars programme.





# Researcher Development

Every BW Scholars researcher has either completed or is currently studying for a PhD or Masters. We assess and select researchers based on the skills and values that we think are essential to deliver excellent academic tutorials.

All of our researchers must also [complete full training](#) that is specific to the needs of Botswana pupils. The training sessions introduce researchers to core pedagogy (such as planning and questioning), to formative and summative assessment, as well as aspects of classroom management and codes of professional conduct.

## Recruitment, Training and Feedback

 **55** researcher applications

 **100%**

of researchers felt motivated to further engage in community programmes

 **9** trained and placed

 **100%**

of researchers felt they had become better teachers through the programme

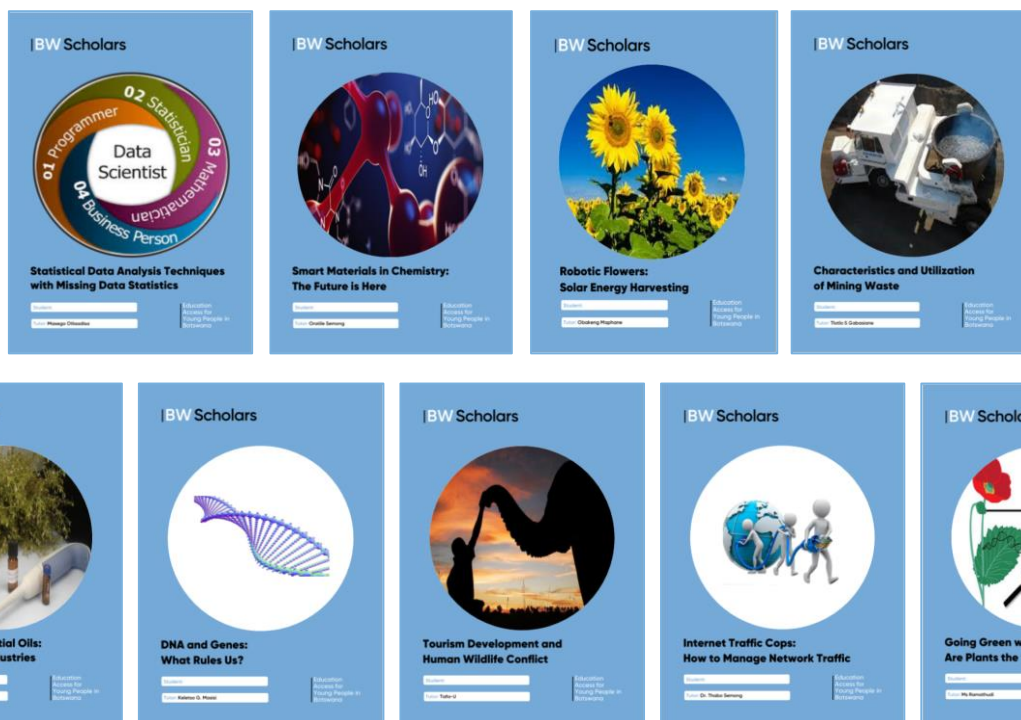
 **100%**

of researchers would work with BW Scholars again and recommend the programme to their colleagues



# Research Based Courses

At BW Scholars, we support every one of our PhD and Masters researchers to design their own course handbook based on their own academic research for our young people. Below are the courses designed and delivered in 2019.



## Course Titles and Tutors

**Tourism Development and Human Wildfire Conflict**  
Unabo Tafa, University of Botswana

**Going Green with Cancer Treatment: Are Plants the Way Forward?**  
Loreto Ramathudi, Botswana International University of Science and Technology

**Smart Materials in Chemistry: The Future is Here**  
Oratile Semong, Botswana International University of Science and Technology

**Internet Traffic Cops: How to Manage Network Traffic**  
Thabo Semong, Botswana International University of Science and Technology

**Robotic Flowers: Solar Energy Harvesting**  
Obakeng Maphane, Botswana International University of Science and Technology

**DNA and Genes: What Rules Us?**  
Keletso G Masisi, Botswana International University of Science and Technology

**Statistical Data Analysis Techniques with Missing Data Statistics**  
Masego Otladisa, Botswana International University of Science and Technology

**Mysteries of Essential Oils: From Nature to Industries**  
Eniah Moshoeshoe-Serame, Botswana International University of Science and Technology

**Characteristics and Utilization of Mining Waste**  
Tlotlo Gabasiane, Botswana International University of Science and Technology



# Pupil Evaluation

---

BW Scholars and AccessEd are committed to data-driven evaluation. Building on the work of The Brilliant Club, we use an outcomes framework that includes key competencies that have been shown to support access to university. The following data is for select self-efficacy, motivation, meta-cognition and university readiness questions from a post-assessment evaluation. The percentages show how many participating pupils agreed or strongly agreed with the statement in their self-evaluation form.

## Study Skills

95%	of learners say they better understand that even if a subject is hard, it can be rewarding to complete it
92%	feel more confident in my reading and writing skills
95%	work harder to make sure they understand what they are studying
90%	have learned new ways of studying that have helped me do better in my lessons
93%	will take more notes in class to help them remember facts from the lesson
90%	feel more confidence using evidence they have read or studied to back up their opinions
92%	felt their tutor helped them to understand the importance of continuing to study beyond school

## University Readiness

97%	of learners are more likely to go to university having completed the BW Scholars Programme
93%	feel more confident that I know what it will take to get into university
98%	Enjoyed visiting BIUST for the BW Scholars Graduation Event

# Pupil Feedback



"I am so proud of myself for being one of the BW Scholars – thanks to my tutor, Dr Semong!"

Kgosi,  
Sedibeng Sa Lorato

"I am now dedicated to doing my work at school because I have been inspired by my tutor"

Brian,  
Matshekge Hill Senior School



"I am proud of taking part in the programme because it has helped me to think out of the box and also see what university learning is like"

Kaone,  
Lotsane Senior School

"The motivational talks make me feel very confident – I now believe that I can do much better – my future is in my hands"

Goratilene,  
Linchwe Junior Secondary School



"I enjoyed knowing that I am able to be innovative despite being from an average home, and also that I am equipped for university "

Olorato,  
Mmaphula Junior Secondary School

# Tutor Feedback

**Obakeng Maphane**

**Robotic Flowers: Solar Energy  
Harvesting**

**What did you enjoy most about the BW Scholars Programme?**

...It gave me an opportunity to engage and inspire young minds... Seeing how motivated the students were and how their confidence grew with time...

**What was your most memorable moment of the BW Scholars Programme?**

...The enthusiasm showed by both students and lead teachers and the amazing atmosphere at graduation...

**Oratile Semong**

**Smart Materials in Chemistry:  
The Future is Here**

**What was your most memorable moment of the BW Scholars Programme?**

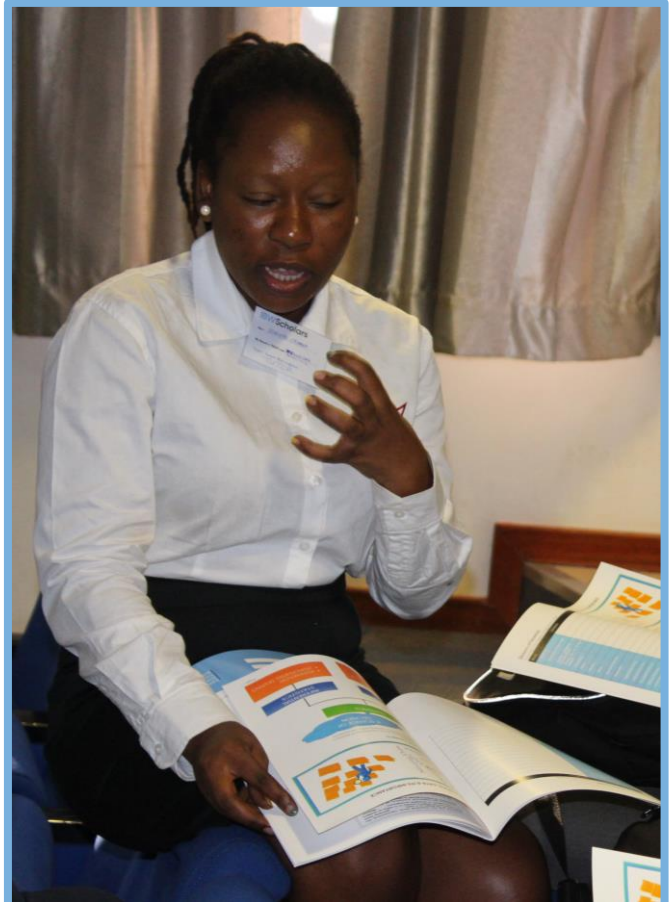
...The feedback tutorial, it was the time I realized the impact that this programme has had on the students...

**What was your most enjoyable aspect of working as a tutor for the EAYB on the BWS Programme?**

...Having a platform to do what I am passionate about the most, Teaching...

**Would you be interested in working for EAYB and BW Scholars as a tutor again?**

...Yes, I see the tremendous impact it has had on the pupils and would like to see it grow and reach other students as well...





[www.access-ed.ngo](http://www.access-ed.ngo)



[lucy@access-ed.ngo](mailto:lucy@access-ed.ngo)



**IBW**Scholars

