

A large red and black Indital Reachstacker CS45-5 is shown in a port setting. The machine has a long, articulated boom extended horizontally. The base is red with "INDITAL" written on it. The background shows a sunset sky and some port infrastructure.

Indital Reachstacker CS45-5

**Strong.
Reliable.
Efficient.**

A dependable Reachstacker,
useful for a wide range
of applications.

ARX

VALUE THAT WORKS



Indital Reachstacker CS45-5

A true heavy lifter capable of handling loads up to 45 tonnes and stacking fully laden containers up to five high, the Reachstacker CS45-5 has proven itself over twenty years across numerous applications. Ideal for laden container handling, this machine can be fitted with a variety of tools for a wide range of industrial applications. The Reachstacker CS45-5 also includes an Eco-Drive mode for greater fuel efficiency.

Engineered for:

Strength and Stability:

With a heavy-duty telescopic boom and a rigid structure made of high tensile steel, the Reachstacker CS45-5 has been designed with optimized structural weights for superior load handling capacity and life.

Ease and safety in operations:

With an optimised structural weight and new steering system, the Reachstacker CS45-5 is easier to handle and provides a smoother and more comfortable ride for your operators. Safety interlocks and LMI make the Reachstacker CS45-5 safe to operate.

Superior performance:

With an enhanced engine and transmission, you will benefit from improved drive performance, which will also help to reduce your fuel consumption. The hydraulic and drive operations have also been improved for faster and smoother lifting and lowering. The Reachstacker CS45-5 offers ECO-Drive modes, giving you three different power modes - Power, Normal and Economy - to choose from for greater fuel efficiency.

TECHNICAL SPECIFICATIONS

MAIN DATA

CS45-5

Manufacturer			Arx Mining and Construction Equipment Private Limited
Model			Indital CS45-5
Load Capacity – Lifting load	Kg		45,000
Load Centre Distance	mm	(C1)	2,000
Load Centre Distance	mm	(C2)	3,850
Load Centre Distance	Mm	(C3)	6,400

Weights

Gross weight, loaded	kg		118,500
Axle loading, loaded front	kg		100,000
Axle loading, loaded rear	kg		18,500
Gross weight, unloaded	kg		73,500
Axle loading, unloaded front	kg		37,000
Axle loading, unloaded rear	kg		36,500

Engine

Manufacturer			Volvo
Model			TAD115IVE
Power unit			Diesel
Rated Power	Hp @ rpm		265/2100
Max Torque	Nm @ rpm		1770@2100
No. of Cylinders			6
Displacement	Litre		13
Cooling			Water cooled
Aspiration			Turbo charged/ Intercooled

Transmission

Manufacturer			ZF
Model			4WG261
Gears - Forward / Reverse			4/3
Gear Shift			Electronic Gear Selector
Type			Power-shift with torque convertor

Drive Axle

Manufacturer			Axle Tech
Model			PRC7545
Type			Single Reduction Axle
Brakes			Multiple, Wet Type, hydraulically actuated
Reduction			30.47
Track width	mm		3,008
Mounting			Rigid

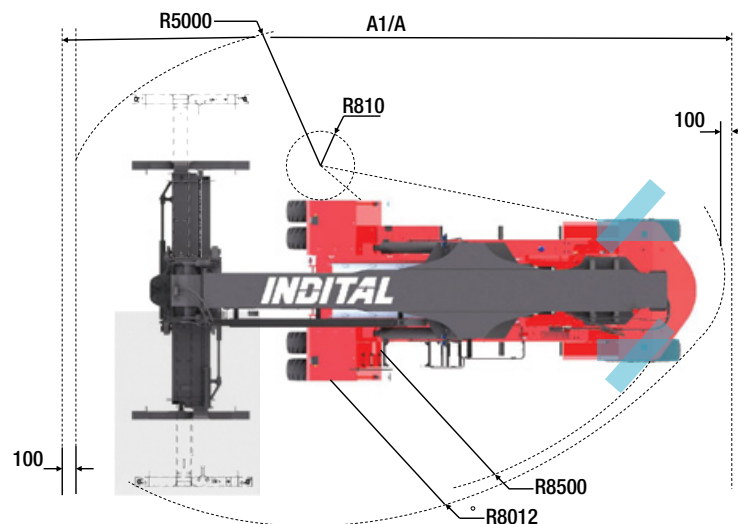
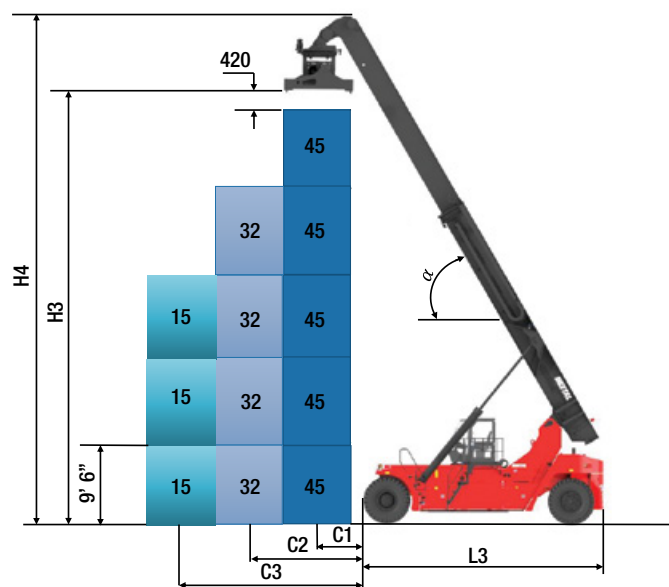
Spreader

Type			Telescopic to handle both 20' and 40' ISO containers
Capacity			Max. 45 tons
e Shift/Side Titting			±800mm/±5 degree
Rotation			+195 degrees, -105degrees
Damping			By twin hydraulic cylinders
Locking			Standard Iso twist locks, hydraulically actuated with electrical safety and signalling

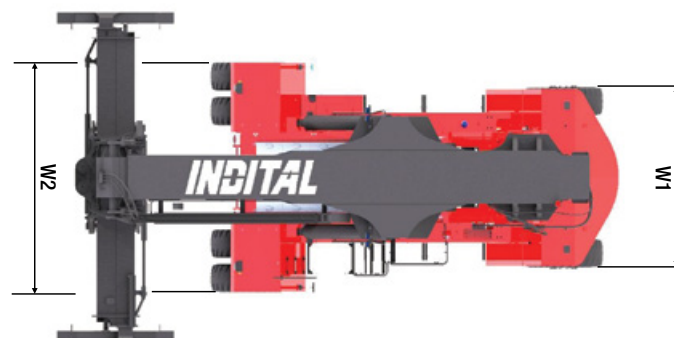
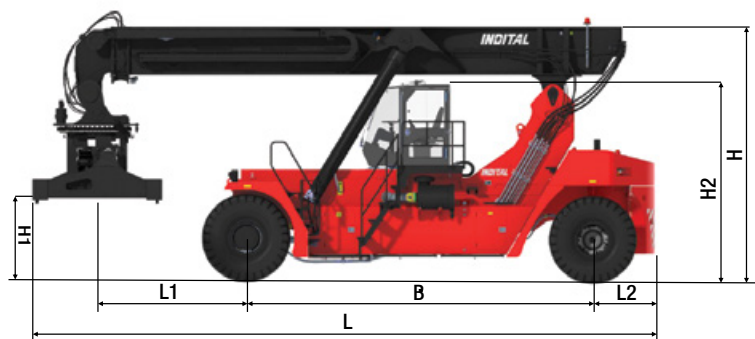
Brake

Service brake	Type		Provided on the front drive axle. Multiple disc w type, hydraulically foot operated.
Parking brake	Type		Fail-safe (Spring applied & hydraulically released) dry disc type Electrically operated.





Indital Reachstacker CS45-5



Illustrations do not correspond to the actual lift truck. The design and materials are subject to alteration without prior notice

TECHNICAL SPECIFICATIONS

MAIN DATA			CS45-5
Tyres			
Type			Pneumatic
Number of tyres (Front & Rear)			4 / 2
Tyre (Front & Rear)			18.0x25, 40 PR
Others			
Fuel tank capacity	Litre		550
Hydraulic tank capacity	Litre		600
Battery	Qty		2nos., Heavy Duty, 150AH
Volts			12V
Dimension			
Wheel Base	mm		6500
Overall length of the equipment	mm	(L)	11,710
Spreader center to front axle centre distance	mm	(L1)	2,810
Rear axle centre to counterweight outer distance	mm	(L2)	1,195
Overall width of the equipment	mm	(W)	6,060
Overall width of front tyres	mm	(W1)	4,050
Overall width of rear tyres	mm	(W2)	3,260
Overall height of the equipment	mm	(H)	4,750
Spreader seat face height to ground level	mm	(H1)	1,495
Cabin height from ground level	mm	(H2)	3,740
Lift height of the equipment from ground	mm	(H3)	15,180
Max. height of the boom from ground	mm	(H4)	17,760
Aisle width 20 container	mm	(A1)	12,990
Aisle width 40 container	mm	(A2)	13,190
Boom Angle	degree		60
Ground Clearance	mm		300
Performance			
Travel speed (loaded/unloaded)	km/hr		22/26
Lifting speed (loaded/unloaded)	m/s		0.30/0.32
Lowering Speed (loaded/unloaded)	m/s		0.35/0.40
Gradeability	Km/hr		28% @0.40
Stability	As per 1459		Complies to EN1459
Tractive force at 2KMPH	Km/hr		215 KN
Noise level	dBA		72 dBA
Electrical			
Electrical			24V
Battery			2 nos./12V, heavy duty, 180AH
Service Data			
Fuel tank	Litre		550
Hydraulic tank	Litre		600
Transmission	Litre		70
Water cooling systems	Litre		60
Engine crank case	Litre		25
Drive axle	Litre		90+18+18
Spreader gear box	Litre		4+4







About ARX:

At ARX we believe in demanding more. More from ourselves and our machines.

Which is why we deliver more. More value, more dependability, more innovation and safety.

From design, sourcing and manufacturing to service and service solutions, everything is created to optimize value and provide performance and safety.

With strategic tie-ups with partners who are global market leaders in their fields of driveline, hydraulics, electronics and fabrication, we offer products that don't just deliver, but excel. With these tie-ups, we bring their expertise to local manufacturing, marrying local value and international quality.

The ARX portfolio includes construction, mining and cargo handling products including a complete range of Motor Graders, Blasthole drill rigs and Dust suppression systems that are built to meet every need.

ARX is also an authorized service agent for the HIAB range of products and extended services that are also supplied to the Indian Armed Forces.

The company has a manufacturing facility in Narasapura, Kolar that is certified under ISO 9001:2015.

About Indital:

Indital has been a trusted name in cargo handling equipment in India for over 32 years. It is our mission to make high quality, innovative products for the local market while understanding your business, so as to provide solutions that make a difference to your operations. We also strive to provide a range of services that are designed to keep your equipment running optimally.

The Indital branded products include Forklifts, Empty Container Handlers, Loaded and Empty Reachstackers. These products are known for their strength, precision handling and great value for money.





Mining & Construction
Equipment Pvt. Ltd.

Manufactured by:

Arx Mining and Construction Equipment Private Limited.

Plot No 3 (Part 1) KIADB Narsapura Industrial Area, Kolar, 563133. Karnataka, India.

Exclusive dealers for Indital: Cargotec India Private Limited,

WeWork, Seawoods Grand Central, 10th Floor, Tower 1, Sector 40, Navi Mumbai - 400706, India.

email: info@arxmc.com | www.arxmc.com



Published by Arx Mining and Construction Equipment Private Limited , © Arx 2022.

Indital and Arx are registered trademarks in India and certain other jurisdictions.

All rights reserved. No part of this publication may be copied or reproduced without permission of the copyright owner. Illustration and images in the brochure are indicative and may show optional attachments and features. We reserve the right to make changes to the specifications and design without prior notice.

