



SMART Water Bottle

User Guide

Congrats on playing it healthy, Champ!

Time to get to know your new H₂O partner.
You're in good hands!

1

Discover

Your INGO Smart Water Bottle is here!
Get used to the sleek design.

Included: USB type-C cable.



2

Download INGO Health

Scan the QR code and download the free app. Your Bluetooth and Location Services should be on.

Follow the easy steps to set up an account, and INGO will do the rest.



visit ingo.health

3

The Bottle Parts

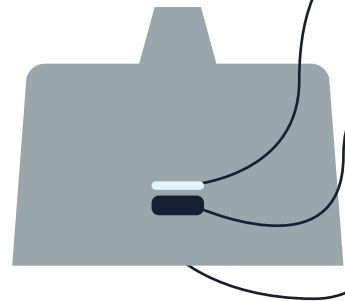
Cap



Magnetic

Effortlessly seals the mouthpiece to keep it safe and clean.

Mouthpiece



LED indicator

Battery & connectivity status.

Charging port

Use your included type-C cable.

Flowmeter

How we track your water intake.

Water
Container



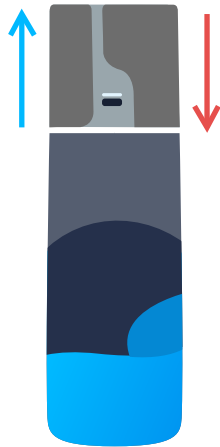
Tritan plastic

Durable, odor and impact resistant.

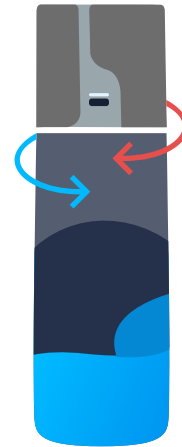
4

Open & Close

The open end of the magnetic cap should always face the charging port and LED.



Slide the magnetic cap up to open or down to close.



Twist the mouthpiece to the right to open or left to close.

5

Time To Clean

Your INGO Bottle is entirely water resistant, so no parts need to be detached.

Clean the magnetic cap, container, and mouthpiece with water and dish soap after every use and let them dry.

Do not submerge the mouthpiece underwater, gently clean with water and dishsoap. **It is NOT dishwasher friendly.**

	 Waterproof	 Detergent proof	 Dishwasher-proof
Water Container	✓	✓	✓
Magnetic Cap	✓	✓	✗
Mouthpiece	✓	✓	✗

6

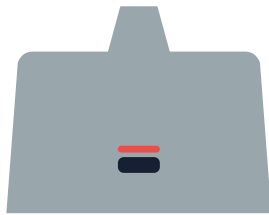
Charge Your Bottle

Plug the cable to charging port and connect the USB to your laptop or a 5V adaptor.

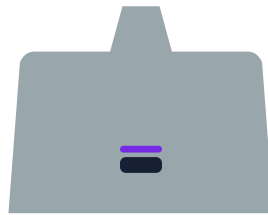
We recommend charging it for **5 hours** the first time.

Check the LED for battery level. It turns off once the bottle is 100% charged.

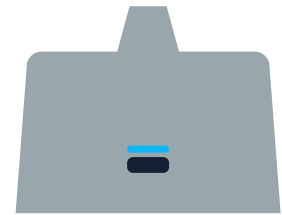
Battery life: up to 14 days. The perfect travel buddy!



RED LED
Battery low



PURPLE LED
Medium Battery



BLUE LED
Ready to use
(takes 3 hours to fully charge)

7

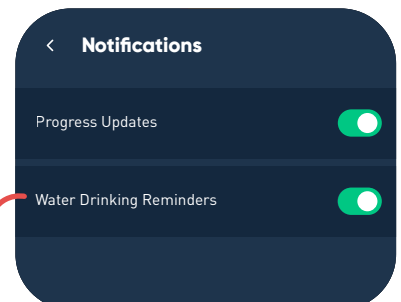
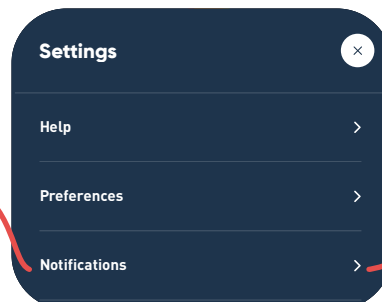
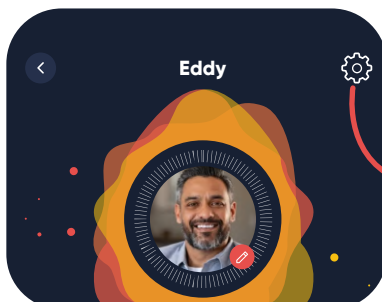
Pair your INGO Bottle

It only takes one tap!

Click **"Pair"** on your dashboard to link your INGO Bottle to the app. The LED will blink blue once done.

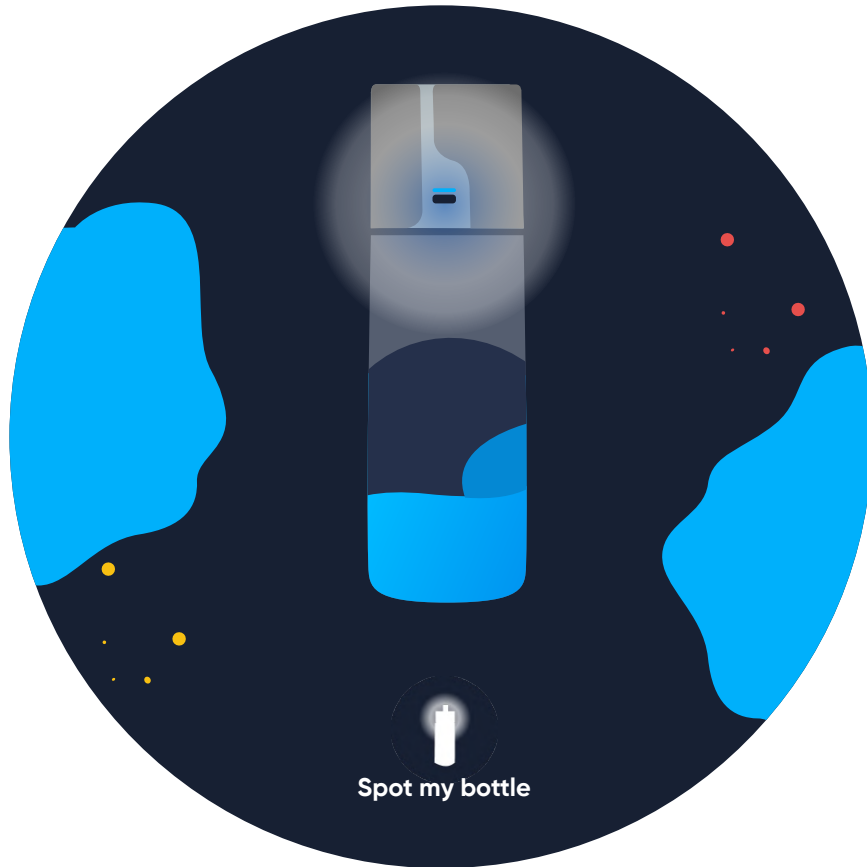


- Remember to enable the reminders for an extra friendly push!



● Spot Your Bottle

If you can't tell your bottle from someone else's, just use Spot My Bottle on the app. Your bottle will blink blue to show it's yours!



8

Fill & Go

Fill your bottle with cold or lukewarm water. The container lets you see the water level for full transparency.

How does it feel to sip in style?



Don't overfill.
Fill below the flowmeter.

Safety Instructions

Do:

- ✓ Store the bottle in the fridge
- ✓ Add ice cubes
- ✓ Fill the bottle with lukewarm or cold water
- ✓ Wash all parts of the bottle with water and dish soap
- ✓ Hand wash the bottle or with a sponge
- ✓ Use the bottle indoors and outdoors

Do Not:

- ✗ Store the bottle in the freezer or microwave it
- ✗ Fill the bottle with hot water
- ✗ Add any other liquid to the bottle (CO2 drinks, protein, juice...)
- ✗ Wash the bottle with harsh chemicals (chlorine, ammonia...)
- ✗ Wash the bottle with abrasive objects
- ✗ Use the bottle in extreme temperatures (too hot or very cold)
- ✗ Dish wash the mouthpiece



**Failing to abide by these safety measures
will risk damaging the bottle**



FDA, CE,
FCC certified-
IP66-Recycled
Tritan

Capacity	595 mL / 20 oz
Manufacturer	CME
Item weight	250 g / 8.81849 ounces
Item dimension	23.38 cm length, width 6.844 cm lid, 7.519 cm base
Material	Plastic: LUPOY PC 1200-08 Light guide: PC Clear Bottle: Tritan / BPA free
Compatibility	iOS, Android, Garmin, Fitbit, and all devices compatible with Huawei Health
Batteries required?	No
Built in batteries	Yes
Battery type	Ion battery 3.7 V Lithium-ion voltage Capacitance 400 mAh
Charger type	USB Type-C
Other compatibility (charger)	Compatible with any Type-C cable and any USB charger
Model	SWB MFBLE01

visit [ingo.health](https://www.ingo.health)