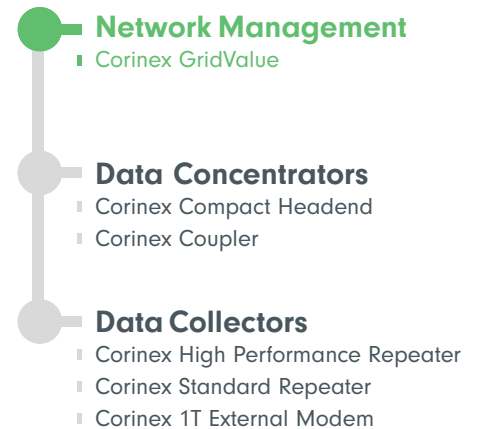




EnergyGrid
Solution

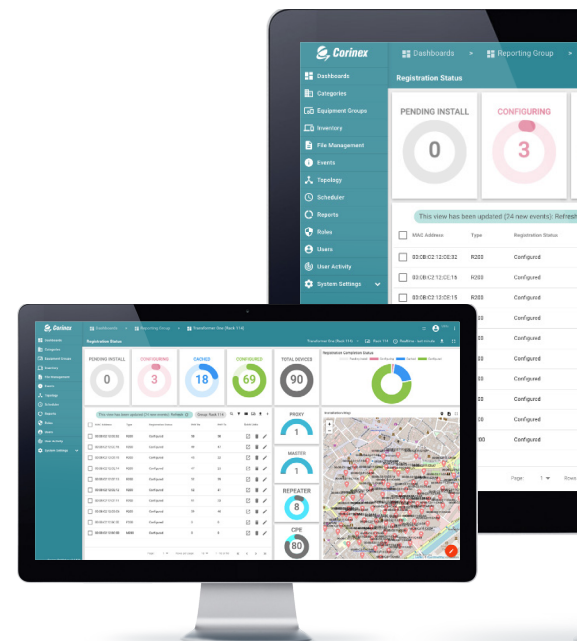
Corinex GridValue EMS

As part of our Broadband over Power Line (BPL) end-to-end solution, this data aggregating and analyzing software brings sensing capabilities to the low voltage part of the electric grid. It provides provisioning, management, and near real-time visibility across utility customers' existing electric infrastructure. Corinex GridValue Elements Management Software (EMS) is a top-level network management solution for our vertically integrated deployments of BPL products, enabling utilities to provide the next generation of smart-grid applications and distributed energy resource services.



Features

- Manages **up to 5,000,000 nodes**, 2 million messages per minute, and 10,000 configuration requests in parallel
- Horizontally **scalable architecture** with unmatched system core performance
- Implemented based on a **micro services architecture** making use of a **docker enterprise container platform**
- Supports **data clustering**
- Integrated GIS** and other visualization tools
- Features **multiple data storage redundancies** and innovative **smart flow** event handling engine
- Versatile and **fully customizable UI**



Key Benefits

Enables
Predictive
Maintenance

Extends
Equipment
Life

Improves
Utilization

Ensures
Regulatory
Compliance

Increases
Uptime

Improves
Customer
Satisfaction

