



Easy & Efficient Cisco ISE Management for Professionals

A web application that helps administrators manage Cisco ISE and 802.1X environments.

WWW.XTENDISE.COM



What is XTENDISE?

XTENDISE is a simple web application connected to your ISE. It is designed for administrators, helpdesks, operators and anyone required to work with ISE by helping them perform routine 802.1X tasks without the need for Cisco ISE training. XTENDISE saves administrator time, prevents errors and increases network security.

Who is XTENDISE for?

XTENDISE is intended for customers that already have Cisco ISE or are planning to deploy 802.1X with Cisco ISE.

KEY BENEFITS

Keep your ISE safe and private

Only core administrators can access ISE for policy changes; everyone else can use XTENDISE for routine tasks.

Saves your employees' time

MAC address management, troubleshooting, every routine task related to 802.1X is much faster with XTENDISE.

Increase your network security

XTENDISE validates your network configurations and makes sure your network is closed and protected.

Accelerate your 802.1X rollout

You do not have to study complex automation tools. XTENDISE will help you to deploy 802.1X configuration in your network with just a few mouse clicks.

Complex ISE Management

XTENDISE provides a complex overview of your ISE deployment and allows you to utilize various ISE features over API.

Quickly identify problems with your ISE deployment

XTENDISE provides simple to read widgets that helps you quickly identify ISE overload so you can act before users are affected.

Integrates with your network

XTENDISE provides a unified tool for administrators that integrates network and ISE management into a single console.

Prevent errors

XTENDISE enforces a strict role based access for administrators based on Active Directory groups, thus they only have access to the features they need for work.

KEY FEATURES

Dashboard and Reports

XTENDISE provides useful 'easy to read' widgets with graphs, tables and data to help administrators identify problematic endpoints with various authentication issues or extensive authentication counts that can affect overall authentication response time. It also provides graphs to identify a periodic overall authentication count or authentication distribution across your ISE servers.

This can easily and quickly help you identify an issue and optimise deployment before it affects your employees.

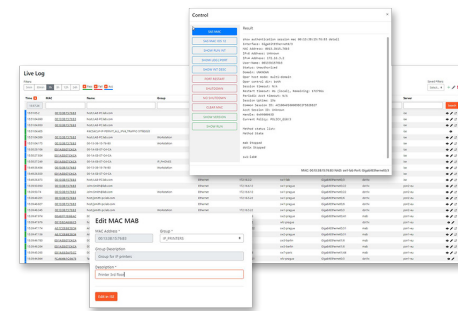


Troubleshoot Failing Authentications

Quickly finding a non-authenticating endpoint and minimising user downtime is a priority for every administrator, but troubleshooting in 802.1X environments can often be challenging and time consuming as it concerns multiple technologies. XTENDISE provides an unified console for administrators to troubleshoot an issue, end to end, across multiple technologies.

The console provides Live Log, which shows the administrator authentication related issues, MAC address management, which is integrated directly to the Live Log and, finally, SSH connector, which is a powerful administrator tool that enables sending SSH commands directly to the switch where the endpoint is connected and collects troubleshooting information with XTENDISE.

The administrator neither has to touch the ISE or a network switch to collect all the information they need to quickly identify the issue and take steps to resolve it.

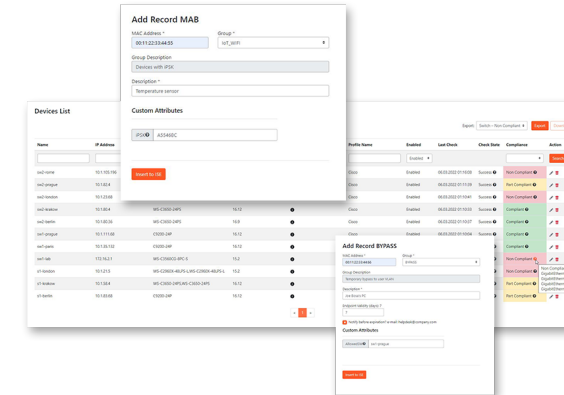
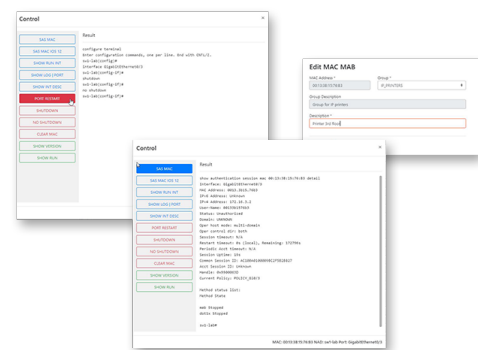


Intelligent VLANs

Dealing with Wake on Lan or IoT devices that do not authenticate can be challenging. Administrators often step away from their standards and begin manually changing access VLANs or other switch interface configurations to make everything work, or sometimes even remove the 802.1X configuration from a switchport completely.

This creates inconsistency and security holes in switch configurations and leads to errors. XTENDISE helps you deal with such situations. With the Intelligent VLANs feature you can tie a specific interface configuration to a MAC address. XTENDISE will simply adjust the switch interface configuration wherever a MAC connects.

Intelligent VLANs will particularly help you when 1) the WoL does not work as the user is authorised in a different VLAN than that configured on the switch port, or when 2) silent devices do not send any packets and thus cannot authenticate with the MAB method.



MAC Address Management

Managing a MAC address database in ISE is a crucial task within each ISE deployment. This feature will help you to do exactly that. Easily add/edit/remove a MAC address from a MAC group, configure custom attributes, set MAC address expiration periods and authorise administrators to only work with certain groups.

Unlike ISE, adding a MAC address entry in XTENDISE is significantly simplified and can be performed with a few clicks. XTENDISE provides 3 workflows to add a MAC address to the database. Each workflow is intended for different endpoint roles:

MAB – Intended for long-term devices that should remain in the database until manually deleted, such as IP phones, IP printers, special devices, etc.

GUEST – Intended for guest devices that require wired connection. These MAC addresses can only be added for a limited time and will be deleted upon expiry.

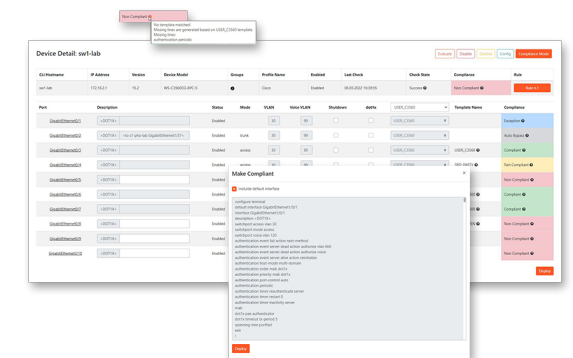
BYPASS – Intended for internal devices that require 802.1X authentication, such as new computers (not yet domain joined), computers that for no obvious reason cannot authenticate, etc. These MAC addresses can only be added for a limited time and will be deleted upon expiry.

Compliance Module

The Compliance module is a comprehensive auditing and configuration management tool that helps administrators periodically audit switch configurations to ensure authentication is enabled and configured in the network as expected, register interfaces without 802.1X configuration for auditing purposes and rollout 802.1X configuration on network switches.

XTENDISE periodically scans all ISE-configured network switches. All interface configurations are compared to configured interface templates and evaluated. If all interface commands are configured, then it is evaluated as Compliant. If there are missing commands, the interface is evaluated as Non-Compliant. If there is at least one Non-Compliant interface, then the whole switch is evaluated as Non-Compliant. This process is repeated for every switch interface, and every switch in your network, to ensure that your network is safe and secure.

The Compliance module can also be used to remedy an interface configuration if it does not comply to the configuration templates, or to rollout the entire 802.1X configuration to a network switch if you are starting with 802.1X. The full process is simplified into a workflow that walks you through the configuration. You simply select the interfaces you want to enable with 802.1X, tune the configuration with VLAN numbers, and descriptions if needed, and click deploy.





Easy & Efficient Cisco ISE Management for Professionals

Pricing

XTENDISE licences, which are available for standard term lengths of 1, 2, and 3 years, are licensed on a subscription basis.

An additional discount is provided for 2- and 3-year orders.



The subscription is provided for the peak number of concurrent endpoints connected to the network. This licensing scheme is the same as for Cisco ISE and the licensed number of endpoints is usually equal to the number of Base Licences for ISE versions 2.7 and lower, and the cumulative number of Essentials, Advangate and Premier licences for ISE versions 3.0 and higher.

Licensed tiers are based on endpoint ranges:

Tier	Endpoints	Price	Premium Support
1	1-499	€1,500	€600
2	500-999	€ 2.9/MAC	€600
3	1,000-1,999	€ 2.2/MAC	€600
4	2,000-4,999	€ 1.5/MAC	€900
5	5,000-9,999	€ 0.9/MAC	€1,200
6	10,000-19,999	€ 0.7/MAC	€1,800
7	20,000-49,999	€ 0.5/MAC	€2,400
8	50,000-99,999	€ 0.3/MAC	€3,000
9	100,000+ Individual		

Need help or more details?

Our customer care is here to help you

+420 271 100 500
info@xtendise.com

GET ONLINE QUOTE

ASK FOR A FREE TRIAL