

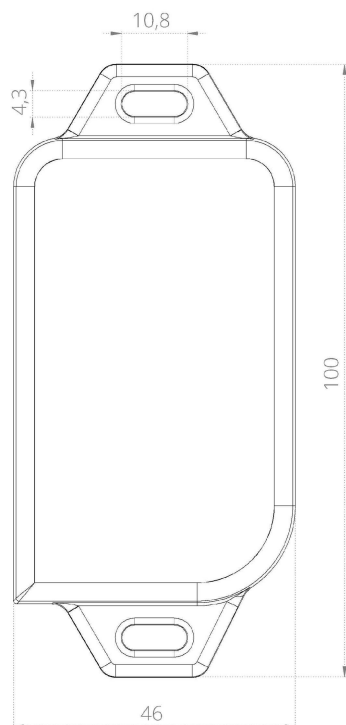


## BLE Smart Tag

Small & portable device  
which pinpoints the  
location of its bearer

### Key features

- Compatible with Ubudu BLE V1 (uplink) & V2 (downlink) setups
- Firmware upgradeable
- Built-in accelerometer
- LED visual indicator
- Attachable form factor
- 46+ months autonomy, depending on scenario
- Powered by replacable coin batteries (2x1000mAh)
- Powered by 2000mAh battery rechargeable via USB-C (optional)
- Designed & manufactured in EU
- Each unit carefully tested
- 1 year warranty
- CE certified
- Dimensions 100 x 46 x 22.3mm
- 66g weight
- IP54 ready for industrial areas
- IP67 optional
- Operating temperatures:
  - -30°C ÷ 60°C (coin)
  - -10°C ÷ 40°C (LiPo)
  - -20°C ÷ 45°C (optional Lipo)
- Available in white and gray (other colours upon request)



Front view



Side view

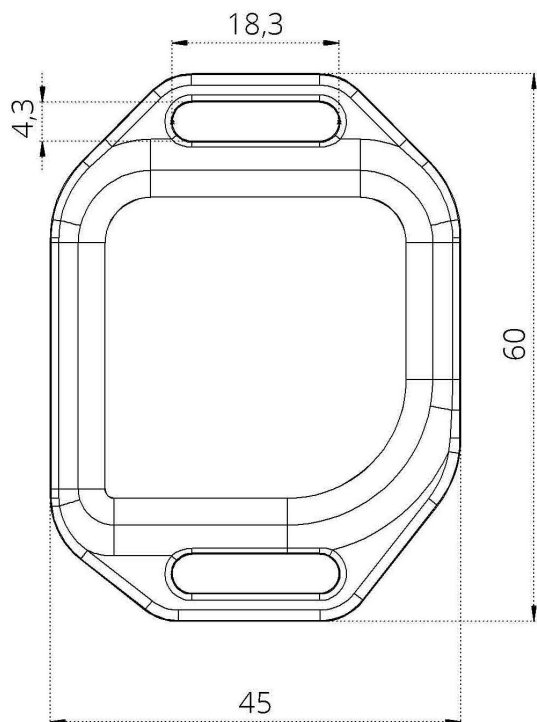


## **BLE Smart Tag Midi**

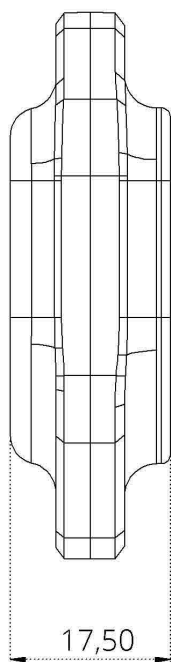
Small & portable device  
which pinpoints the  
location of its bearer

### **Key features**

- Compatible with Ubudu BLE V1 (uplink) & V2 (downlink) setups
- Firmware upgradeable
- Built-in accelerometer
- LED visual indicator
- Attachable form factor
- 23+ months autonomy, depending on scenario
- Wearable form factor
- Powered by replacable coin battery (1000mAh)
- Designed & manufactured in EU
- Each unit carefully tested
- 1 year warranty
- Dimensions 65 x 45 x 17.5mm
- Weight ~42g
- CE certified
- IP54 ready for industrial areas
- IP67 optional
- Oper. temp. -30°C ÷ 60°C
- Available in white and gray (other colours upon request)



Front view



Side view

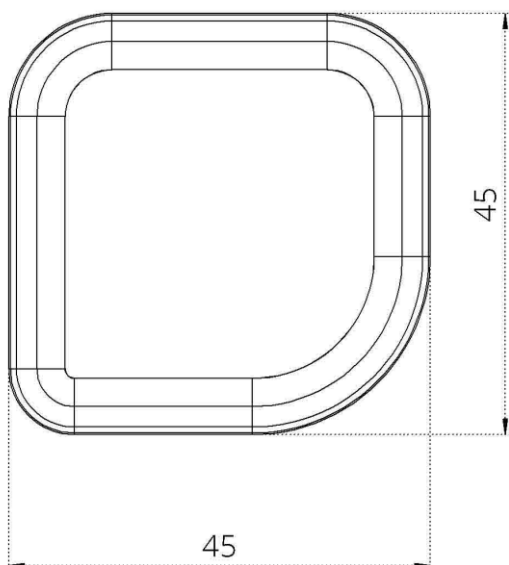


## BLE Smart Tag Mini

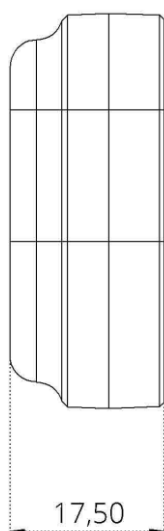
Small & portable device  
which pinpoints the  
location of its bearer

### Key features

- Compatible with Ubudu BLE V1 (uplink) & V2 (downlink) setups
- Firmware upgradeable
- Built-in accelerometer
- LED visual indicator
- Attachable form factor
- 23+ months autonomy, depending on scenario
- Wearable form factor
- Powered by replacable coin battery (1000mAh)
- Designed & manufactured in EU
- Each unit carefully tested
- 1 year warranty
- Dimensions 45 x 45 x 17.5mm
- Weight ~42g
- CE certified
- IP54 ready for industrial areas
- IP67 optional
- Oper. temp. -30°C ÷ 60°C
- Available in white and gray (other colours upon request)



Front view



Side view