



Tutorial



Search E-bike

Search the closest E-bike
on the map

1



Select E-bike

Select the E-bike
you want to use

2



Start rental

Swipe right on the button
Start Rental

3



Unlock E-bike

To unlock the E-bike,
press the **Unlock** button

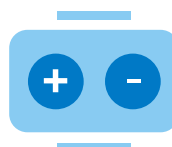
4



Turn ON E-bike

To turn on the E-bike, press and hold
the right **Power** button located under
the display installed on the handlebar

5



Motor power

To increase or decrease the pedal
assist power, press the + or - buttons on
the display and to change gears use the
gearbox on the right side of the handlebar

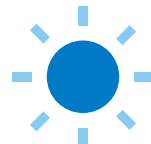
6



Horn

To sound the horn,
press the **Green** button
located just below the display
on the handlebar of the E-bike

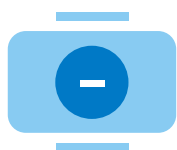
7



Lights

To turn the lights ON or OFF,
press and hold the + button
on the display

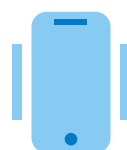
8



Walk mode

To activate the walk mode,
press and hold the - button.
When the - button is released,
the E-bike exits from walk mode

9



Mobile holder

You can place your phone
on the special mobile holder
installed on the handlebar
to always have it at hand

10



Have a nice trip!

Enjoy your ride by travelling carefully
and always respecting other people.
Remember to wear the **helmet**.
Safety first of all!

11



Ends rental

To complete the rental, go to a
Lakenergy stall, swipe right on the
End the rental button on the App
and wait for the summary of use

12