

D I T R O N      D E N T A L   U S A

# PRODUCT CATALOG

*TEAMWORK...*



*YOUR SUCCESS IS OUR SUCCESS*



# TABLE OF CONTENTS...

<i>OUR STORY</i>	<i>4</i>
Message from the Founder Dr. Ole T. Jensen .....	5
Step into a World of Precision .....	6
Precision Manufacturing Workflow .....	9
An Implant System that Checks All the Boxes .....	10
Doctor-Driven Company .....	11
<i>DENTAL IMPLANTS</i>	<i>12</i>
Ultimate Precision Implant ULT™ Drill Sequence .....	14
Ultimate Precision Implant ULT™ Diameters & Lengths .....	15
Molecular Precision Implant MPI™ Drill Sequence .....	16
Molecular Precision Implant MPI™ Diameters & Lengths .....	17
One-Piece Implant OPI™ Drill Sequence .....	18
One-Piece Implant OPI™ Diameters & Lengths .....	19
<i>PROSTHETIC COMPONENTS</i>	<i>20</i>
Healing Abutments .....	22
Temporary Abutments .....	24
Impression Copings & Analogs .....	25
Straight Lab Prepable & Pre-Machined Anatomic Abutments .....	26
Angulated Lab Prepable & Pre-Machined Anatomic Abutments ....	27
Straight Casting Abutments: CrCo, Plastic & Ti-Alloy .....	28
Angled Casting Abutments: Plastic .....	29
Straight Multi-Unit Abutments .....	30
Angled Multi-Unit Abutments .....	31
Overdenture Abutments: Liberator® .....	32
Overdenture Abutments: Ball .....	33
“Legacy” Straight Abutments .....	34

<i>CAD/CAM DIGITAL WORKFLOW</i>	<i>36</i>
Digital Scan Body(s) & Analogs .....	38
Ti-Blanks & Imagine USA Milling Center.....	39
Standard & Multi-Unit Ti-Bases .....	40
Mini & Slim Ti-Bases .....	41
<i>SURGICAL KITS, DRILLS &amp; INSTRUMENTS</i>	<i>42</i>
Full Surgical Kit .....	44
Mini Surgical Kit .....	45
Full Drill Stopper Kit .....	46
Drill Stopper Tube & Surgical Tube .....	47
Drills .....	48
Drills .....	49
Surgical Instruments .....	50
Prosthetic Instruments .....	51
<i>CUSTOMER EXPERIENCE</i>	<i>52</i>
Packaging .....	54
Customer Service.....	55

# *OUR STORY*



*“What Ditron does...they make the most accurate machined parts in the world, for aerospace, for high performance cars such as Tesla, Maserati, BMW, Mercedes Benz, F-1 Race Cars **AND** they make the most accurate, well-fitting dental implants.*

*As the first doctor-driven dental company, with a world-class advisory board, we are here to listen and provide you with products and solutions that deliver consistent results, are easy to use and backed by over 50 years of global precision research and manufacturing. All this so you can achieve your practice goals, whatever they may be, and provide your patients with safe and reliable solutions to improve their quality of life.”*

Ole T. Jensen, DDS, MS  
Founder, Ditron Dental USA

# STEP INTO OUR WORLD OF PRECISION...



Ditron Precision Ltd., a precision machining world leader and the parent company for Ditron Dental and Ditron Dental USA was established in Israel in 1968.

The result of over 50 years of experience in the design, production and delivery of ultra-precise mission critical products for the aerospace, aeronautical and automotive industries has now been applied to dental implants.



Our products have been installed in some of the most extreme and challenging environments in which failure is unacceptable, including Tesla, Daimler, Jaguar, F-1 Race Cars, Robert Bosch Corp, BMW and Mercedes-Benz. With state-of-the-art technology and in-depth process control, we attain production at single micron level accuracies and have been one of the leading companies in the design, production and JIT “Just in Time” delivery of ultra-precise mission critical products.



The Ditron Dental USA dental implant system was designed as a 3rd generation system, providing a unique combination of outstanding precision with unequaled clinical versatility.

The implant system includes the Molecular Precision Implant MPI™, the One-Piece Implant OPI™ and our flagship Ultimate Precision Implant ULT™ with the patented reverse concave neck and micro-threads that together with the MolecuLock™ implant-abutment connection mitigate component micro-movement and marginal bone loss associated with peri-implant disease.

The MolecuLock™ implant-abutment connection incorporates tight manufacturing tolerances in three critical parameters: Mating Tolerances, Roundness and Surface Roughness.

**LIFETIME WARRANTY**



The Ditron Dental USA dental implant system is the clinician’s choice for dentists who demand exceptional **PRECISION**, **DESIGN**, **QUALITY**, **VERSATILITY** and **INNOVATION** (PDQVI) at a Responsible price with a Lifetime Warranty.





## MULTI-DISCIPLINARY TEAMWORK

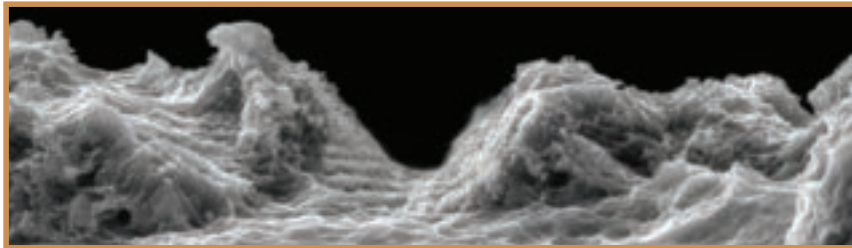
We believe a multi-disciplinary approach is the best catalyst for innovation and have teamed engineers, micro-machining specialists and top-notch clinicians to drive our research and development of high-end dental implant-based solutions.

The long-term success of our dental implant system, allows the dental team to reconstruct a patient's teeth as close as possible to their natural dentition. We provide patients with a safe and reliable solution to improve their well-being and quality of life, both functionally and esthetically "same day".

## MILLING, SURFACE, INSPECTION, CLEANROOM & CERTIFICATION



All implant system components are made of biocompatible medical Grade 23 Ti-Alloy (Ti6Al4V ELI). The specific Ti-Alloy used by Ditron Dental was chosen due to its superior properties i.e., high strength to weight ratio, very high corrosion resistance, high modulus of elasticity and its excellent osseointegration capabilities. The properties include Tensile Strength (860 MPa Minimum), Elongation (10%), O<sub>2</sub> Content (0.13% Maximum) and Excellent Biocompatibility.



All dental implants are Al<sub>2</sub>O<sub>3</sub> blasted and double thermally acid-etched, creating a micro-macro morphology for assisted and accelerated osseointegration. High-purity cleaning is introduced to ensure no foreign particles remain on the dental implant surface. The success or failure of new bone growth is directly linked to the surface morphology and surface chemistry together with the effective removal of contaminants.



All dental implants, prosthetic components and instruments undergo a comprehensive internal testing and inspection process. This advanced quality assurance system aims to assure a Zero-PPM "Zero Defects per Million Parts". Outstanding precision and exceptional quality are an essential part of our corporate DNA.

The dental implants, prosthetic components and instruments are then sent to our ISO 14644-1 "Class 7" compliant cleanroom facilities for packaging. The cleanroom has particle counts of less than 1 per million/m<sup>3</sup>.



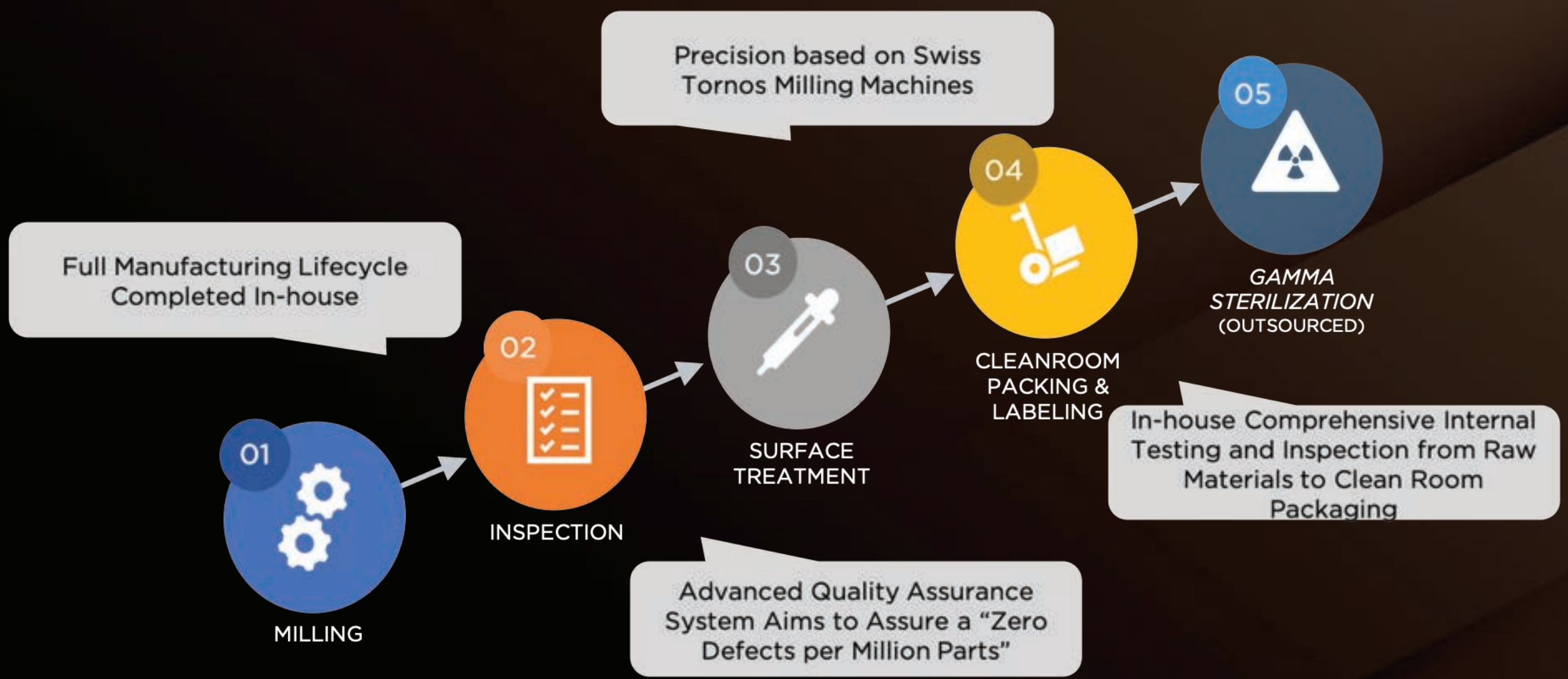
Ditron Dental is certified under EN ISO 9001:2008, SN EN ISO 13485:2012 MDD 93/42/EEC Annex II and is authorized to use the CE mark on all Ditron Dental products. All products are 510 (k) cleared by the FDA. All rights are reserved. Warning: Only a licensed dentist should use these products.

*“BUT QUALITY OF WORK CAN BE EXPECTED ONLY THROUGH PERSONAL SATISFACTION, DEDICATION AND ENJOYMENT. IN OUR PROFESSION, PRECISION AND PERFECTION ARE NOT A DISPENSABLE LUXURY, BUT A SIMPLE NECESSITY.”*

NIKLAUS WIRTH



# PRECISION MANUFACTURING WORKFLOW...



# AN IMPLANT SYSTEM THAT CHECKS ALL THE BOXES...

## PRECISION

*Art & Science Intersect with Aerospace Accuracy for Integrated Biomechanical Excellence*

- *Born from over 50-years of In-house Experience: Aerospace and automotive precision engineering, where failure is not an option.*
- *MolecuLock™ Implant-Abutment Connection: Minimize micromovement under mechanical load reducing microgaps, microleakage and the colonization of bacteria, that can lead to marginal bone loss and peri-implant disease*
- *Single Micron Accuracy: Delivering Zero-PPM “Zero Defects per Million Parts”*



## DESIGN

*Ongoing Commitment to Research and Development is Paramount to Provide Revolutionary Innovation while Raising the Clinical Standard of Excellence*

- *Reverse Concave Neck (RCN): Preserves marginal bone and peri-implant soft tissue*
- *Double Stressless Sharp Threads (DSST): Enhanced initial stability regardless the bone type*
- *Helico Apical-Coronal Slots: Accelerated and assisted osseointegration*
- *Single 2.45 mm Internal Hex Connection: Shared across ALL implant diameters and lengths. NO NP, RP or WP*



*THE FIRST DOCTOR-DRIVEN DENTAL IMPLANT COMPANY...*



Berneer Dunson, DDS



Brett L. Ferguson, DDS



Jeffrey Ganeles, DMD



Curtis E. Jansen, DDS



John C. Kois, DMD, MSD



Pamela Maragliano-Muniz, DMD



Robert Margeas, DMD



Robert J. Miller, DDS



Simon Oh, DDS



Grant Olson, DDS



Stephen Parel, DDS



Lou Shuman, DMD



Dennis P. Tarnow, DDS



Ervin Weiss, DMD



# *DENTAL IMPLANTS*



*ULT™*



*MPI™*



*OPI™*

# ULTIMATE PRECISION IMPLANT ULT™...



### DRILLING PROTOCOL:

- Use sharp drills with sufficient irrigation and an in-and-out drilling motion.
- Use the drills in successively increasing sizes.
- Drilling procedures should be performed at a maximum 800-1300 RPM. The RPM values for each drill are the manufactures suggestions.
- An additional 1 mm must be added to the drill length to account for the angled cutting tip.
- A countersink should be used if the Type I/II Bone protocol is not adequate to fully seat the implant without exceeding the recommended insertion torque.

### INSERTION TORQUE:

- 60 Ncm for implants diameter 3.75 mm and above.

	Bone Type I & II	RPM	Bone Type III & IV	RPM
Ø 3.75 mm	Ø 1.9 mm	1200-1500	Ø 1.9 mm	1200-1500
	Ø 2 mm	900-1200	Ø 2 mm	900-1200
	Ø 2.8 mm	500-700	Ø 2.8 mm	500-700
	Ø 3.2 mm	200-400		
Ø 4.2 mm	Ø 1.9 mm	1200-1500	Ø 1.9 mm	1200-1500
	Ø 2 mm	900-1200	Ø 2 mm	900-1200
	Ø 2.8 mm	500-700	Ø 2.8 mm	500-700
	Ø 3.2 mm	400-700	Ø 3.2 mm	400-700
	Ø 3.8 mm	200-400		
Ø 5.0 mm	Ø 1.9 mm	1200-1500	Ø 1.9 mm	1200-1500
	Ø 2 mm	900-1200	Ø 2 mm	900-1200
	Ø 2.8 mm	500-700	Ø 2.8 mm	500-700
	Ø 3.2 mm	400-700	Ø 3.2 mm	400-700
	Ø 3.8 mm	400-600	Ø 3.8 mm	400-600
	Ø 4.5 mm	200-400		
Ø 6.0 mm	Ø 1.9 mm	1200-1500	Ø 1.9 mm	1200-1500
	Ø 2 mm	900-1200	Ø 2 mm	900-1200
	Ø 2.8 mm	500-700	Ø 2.8 mm	500-700
	Ø 3.2 mm	400-700	Ø 3.2 mm	400-700
	Ø 3.8 mm	400-600	Ø 3.8 mm	400-600
	Ø 4.5 mm	400-600	Ø 4.5 mm	400-600
	Ø 5 mm	300-500	Ø 5 mm	300-500
	Ø 5.5 mm	200-400		



## ULT™ DENTAL IMPLANTS Ø 3.75 - 6 mm & LENGTH 7 - 16 mm

IMPLANTS & COVER SCREWS MANUFACTURED FROM BIOCOMPATIBLE MEDICAL GRADE 23 TI-ALLOY (TI6AL4V ELI)



ULT-07375  
ULT-08375  
ULT-10375  
ULT-11375  
ULT-13375  
ULT-16375



ULT-07420  
ULT-08420  
ULT-10420  
ULT-11420  
ULT-13420  
ULT-16420



Cover Screw Included

2-Stage Surgery  
Torque 20 Ncm

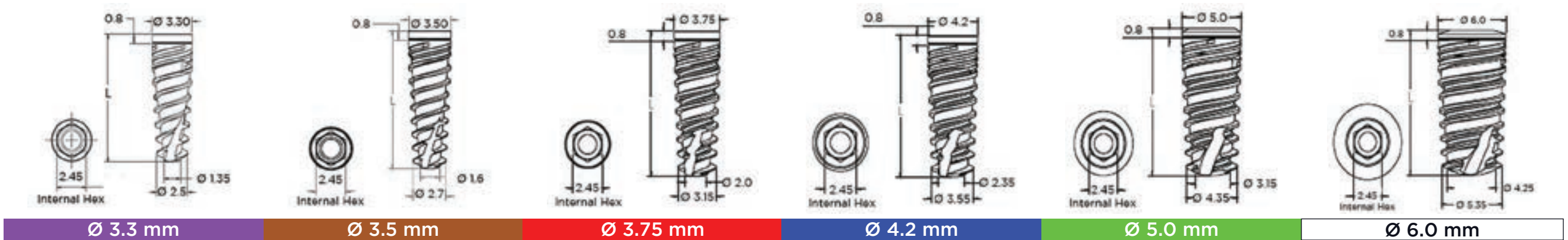


ULT-07500  
ULT-08500  
ULT-10500  
ULT-11500  
ULT-13500  
ULT-16500



ULT-07600  
ULT-08600  
ULT-10600  
ULT-11600  
ULT-13600

# MOLECULAR PRECISION IMPLANT MPI™...



## MECHANICAL STRESS TESTING: Ø 3.3 mm

- Static: Average of 773 N
- Dynamic: 5 Million Cycles with Fatigue Limit of 320 N
- Maximum: Max Endured Load of 1,072 N

## DRILLING PROTOCOL:

- Use sharp drills with sufficient irrigation and an in-and-out drilling motion.
- Use the drills in successively increasing sizes.
- Drilling procedures should be performed at a maximum 800-1300 RPM. The RPM values for each drill are the manufactures suggestions.
- An additional 1 mm must be added to the drill length to account for the angled cutting tip.
- A countersink should be used if the Type I/II Bone protocol is not adequate to fully seat the implant without exceeding the recommended insertion torque.

## INSERTION TORQUE:

- 60 Ncm for implants diameter 3.75 mm and above.
- 45 Ncm for implants diameter 3.3 and 3.5 mm.

	Bone Type I & II		Bone Type III & IV	
	RPM		RPM	
Ø 3.3 mm	Ø 1.9 mm	1200-1500	Ø 1.9 mm	1200-1500
	Ø 2 mm	900-1200	Ø 2 mm	900-1200
	Ø 2.8 mm	500-700		
Ø 3.5 mm	Ø 1.9 mm	1200-1500	Ø 1.9 mm	1200-1500
	Ø 2 mm	900-1200	Ø 2 mm	900-1200
	Ø 2.8 mm	500-700	Ø 2.8 mm	500-700
	Ø 3.2 mm	200-400		
Ø 3.75 mm	Ø 1.9 mm	1200-1500	Ø 1.9 mm	1200-1500
	Ø 2 mm	900-1200	Ø 2 mm	900-1200
	Ø 2.8 mm	500-700	Ø 2.8 mm	500-700
	Ø 3.2 mm	200-400		
Ø 4.2 mm	Ø 1.9 mm	1200-1500	Ø 1.9 mm	1200-1500
	Ø 2 mm	900-1200	Ø 2 mm	900-1200
	Ø 2.8 mm	500-700	Ø 2.8 mm	500-700
	Ø 3.2 mm	400-700	Ø 3.2 mm	400-700
	Ø 3.8 mm	200-400		
Ø 5.0 mm	Ø 1.9 mm	1200-1500	Ø 1.9 mm	1200-1500
	Ø 2 mm	900-1200	Ø 2 mm	900-1200
	Ø 2.8 mm	500-700	Ø 2.8 mm	500-700
	Ø 3.2 mm	400-700	Ø 3.2 mm	400-700
	Ø 3.8 mm	400-600	Ø 3.8 mm	400-600
	Ø 4.5 mm	200-400		
Ø 6.0 mm	Ø 1.9 mm	1200-1500	Ø 1.9 mm	1200-1500
	Ø 2 mm	900-1200	Ø 2 mm	900-1200
	Ø 2.8 mm	500-700	Ø 2.8 mm	500-700
	Ø 3.2 mm	400-700	Ø 3.2 mm	400-700
	Ø 3.8 mm	400-600	Ø 3.8 mm	400-600
	Ø 4.5 mm	400-600	Ø 4.5 mm	400-600
	Ø 5 mm	300-500	Ø 5 mm	300-500
	Ø 5.5 mm	200-400		



## MPI™ DENTAL IMPLANTS Ø 3.3 - 6 mm & LENGTH 6 - 16 mm

IMPLANTS & COVER SCREWS MANUFACTURED FROM BIOCOMPATIBLE MEDICAL GRADE 23 TI-ALLOY (TI6AL4V ELI)



MPI-08330  
MPI-10330  
MPI-11330  
MPI-13330  
MPI-16330



MPI-08350  
MPI-10350  
MPI-11350  
MPI-13350  
MPI-16350



MPI-08375  
MPI-10375  
MPI-11375  
MPI-13375  
MPI-16375



Cover Screw Included

2-Stage Surgery  
Torque 20 Ncm



MPI-06420  
MPI-08420  
MPI-10420  
MPI-11420  
MPI-13420  
MPI-16420



MPI-06500  
MPI-08500  
MPI-10500  
MPI-11500  
MPI-13500  
MPI-16500



MPI-06600  
MPI-08600  
MPI-10600  
MPI-11600  
MPI-13600



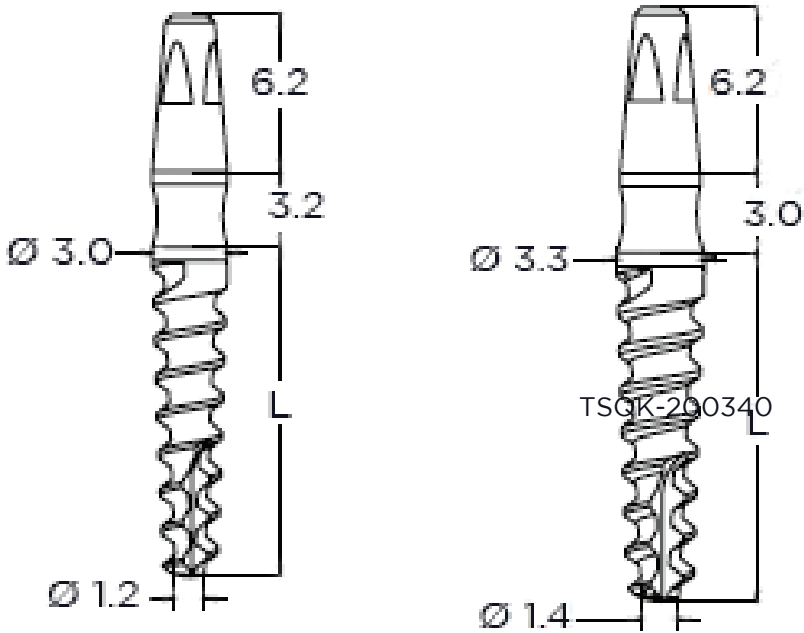
# ONE-PIECE IMPLANT OPI™...

### DRILLING PROTOCOL:

- Use sharp drills with sufficient irrigation and an in-and-out drilling motion.
- Use the drills in successively increasing sizes.
- Drilling procedures should be performed at a maximum 800-1300 RPM. The RPM values for each drill are the manufactures suggestions.
- An additional 1 mm must be added to the drill length to account for the angled cutting tip.
- A countersink should be used if the Type I/II Bone protocol is not adequate to fully seat the implant without exceeding the recommended insertion torque.

### INSERTION TORQUE:

- 45 Ncm for implants diameter 3.0 and 3.3 mm.



Every OPI implant is provided with a plastic carrier for easy handling and removal from the titanium sleeve.  
A TSQK-200340 OPI Short Hand & Rachet Key Driver (21 mm long) is required for final implant placement.

	Bone Type I & II	RPM	Bone Type III & IV	RPM
Ø 3.0 mm	Ø 1.9 mm	1200-1500	Ø 1.9 mm	1200-1500
	Ø 2 mm	900-1200	Ø 2 mm	900-1200
	Ø 2.5 mm	700-900		
Ø 3.3 mm	Ø 1.9 mm	1200-1500	Ø 1.9 mm	1200-1500
	Ø 2 mm	900-1200	Ø 2 mm	900-1200
	Ø 2.5 mm	700-900	Ø 2.5 mm	700-900
	Ø 2.8 mm	400-700		

## OPI™ DENTAL IMPLANTS & ANALOG

IMPLANTS MANUFACTURED FROM BIOCOMPATIBLE MEDICAL GRADE 23 TI-ALLOY (Ti6AL4V ELI)

ANALOG MANUFACTURED FROM HIGH GRADE STAINLESS STEEL 316



# *PROSTHETIC COMPONENTS*





## HEALING ABUTMENTS

ABUTMENTS MANUFACTURED FROM BIOCOMPATIBLE MEDICAL GRADE 23 TI-ALLOY (TI6AL4V ELI)

ABUTMENT TORQUE  
30 Ncm

### STANDARD HEALING ABUTMENTS



CHC-2012  
Ø 4.6 mm  
CH 2 mm



CHC-2013  
Ø 4.6 mm  
CH 3 mm



CHC-2014  
Ø 4.6 mm  
CH 4 mm



CHC-2015  
Ø 4.6 mm  
CH 5 mm



CHC-2016  
Ø 4.6 mm  
CH 6 mm



CHC-2017  
Ø 4.6 mm  
CH 7 mm

NON-ENGAGED CYLINDRICAL CONNECTION

## HEALING ABUTMENTS

ABUTMENTS MANUFACTURED FROM BIOCOMPATIBLE MEDICAL GRADE 23 TI-ALLOY (Ti6AL4V ELI)

ABUTMENT TORQUE  
30 Ncm

### ANATOMIC HEALING ABUTMENTS



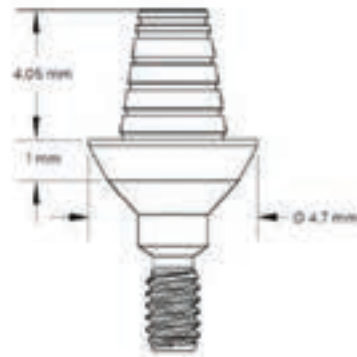


## TEMPORARY ABUTMENTS

ABUTMENTS MANUFACTURED FROM BIOCOMPATIBLE MEDICAL GRADE 23 TI-ALLOY (Ti6AL4V ELI)

ABUTMENT TORQUE  
30 Ncm

### ONE PIECE TEMPORARY ABUTMENTS



TAB-7001  
Ø 4.7 mm  
CH 1 mm



TAB-7002  
Ø 4.7 mm  
CH 2 mm



TAB-7003  
Ø 4.7 mm  
CH 3 mm



TAB-7005  
Ø 4.7 mm  
CH 5 mm



TAB-7007  
Ø 4.7 mm  
CH 7 mm

NON-ENGAGED CYLINDRICAL CONNECTION

### SNAP-ON PLASTIC SLEEVE SET FOR TEMPORARY FABRICATION



TAB-7008  
HARD, STANDARD & SOFT  
USE WITH OR WITHOUT TEMPORARY CEMENT



## IMPRESSION COPINGS & ANALOGS

IMPRESSION COPINGS & ANALOGS MANUFACTURED FROM HIGH GRADE STAINLESS STEEL 316

DENTAL IMPLANT & MULTI-UNIT ABUTMENT  
CLOSED TRAY IMPRESSION COPINGS  
INCLUDES 16 mm SHORT SCREW (TRS-3050)

DENTAL IMPLANT & MULTI-UNIT ABUTMENT  
OPEN TRAY IMPRESSION COPINGS  
INCLUDES 16 mm SHORT SCREW (TRS-3050)



TRO-3030  
Ø 3.8 mm  
L 12 mm



TRO-3010  
Ø 4.5 mm  
L 11 mm



MUP-9141  
MULTI-UNIT



TRC-3030  
Ø 3.8 mm  
L 12 mm



TRC-3020  
Ø 4.5 mm  
L 8 mm



MUP-9140  
MULTI-UNIT

DENTAL IMPLANT & MULTI-UNIT  
ABUTMENT ANALOGS



AN-2010  
IMPLANT ANALOG



MUP-9137  
MULTI-UNIT ABUTMENT ANALOG

# STRAIGHT LAB PREPABLE & PRE-MACHINED ANATOMIC ABUTMENTS FOR SINGLE AND MULTI-UNIT CEMENTED RESTORATIONS

ABUTMENTS & SCREWS MANUFACTURED FROM BIOCOMPATIBLE MEDICAL GRADE 23 TI-ALLOY (Ti6AL4V ELI)

ABUTMENT TORQUE  
30 Ncm

STRAIGHT LAB PREPABLE  
ABUTMENT SCREW INCLUDED 8.3 mm (ABTS-2000)

STRAIGHT ANATOMIC  
ABUTMENT SCREW INCLUDED 8.3 mm (ABTS-2000)



ABT-6030  
Ø 3.8 mm  
L 8.5 mm



ABT-6040  
Ø 3.8 mm  
L 6 mm



ABT-6010  
Ø 4.5 mm  
L 11.5 mm



ABT-6020  
Ø 4.5 mm  
L 8.5 mm

ENGAGED HEXAGONAL CONNECTION



ABTS-2000  
**NOT IN STOCK**



ABT-6050-1  
Ø 5.6 mm  
CH 1 mm



ABT-6050-2  
Ø 5.6 mm  
CH 2 mm



ABT-6050-3  
Ø 5.6 mm  
CH 3 mm



ABT-6050-4  
Ø 5.6 mm  
CH 4 mm

ENGAGED HEXAGONAL CONNECTION

NOTE: Same product code listing with a  
New Scalloped Margin Design



# ANGULATED LAB PREPABLE & PRE-MACHINED ANGULATED ANATOMIC ABUTMENTS FOR SINGLE AND MULTI-UNIT CEMENTED RESTORATIONS

ABUTMENTS & SCREWS MANUFACTURED FROM BIOCOMPATIBLE MEDICAL GRADE 23 TI-ALLOY (Ti6AL4V ELI)

ABUTMENT TORQUE  
30 Ncm

15° & 25° ANGULATED  
LAB PREPABLE TI-ABUTMENTS  
ABUTMENT SCREW INCLUDED  
8.3 mm (ABTS-2000)

\* The Offset allows you to place the abutment  
in 12 positions vs. the normal 6 positions.



ABTS-2000  
NOT IN STOCK



ABT-4015  
Ø 4.8 mm  
L 8.5 mm



ABT-4015-1  
Ø 4.8 mm  
L 11.5 mm



ABT-4015-1B  
Ø 4.8 mm  
L 11.5 mm  
30° OFFSET \*



ABT-4025  
Ø 4.8 mm  
L 8.5 mm



ABT-4025-1  
Ø 4.8 mm  
L 11.5 mm



ABT-4025-1B  
Ø 4.8 mm  
L 11.5 mm  
30° OFFSET \*

ENGAGED HEXAGONAL CONNECTION



ABT-5015-1  
Ø 4.7 mm  
L 8 mm  
CH 1 mm



ABT-5015-2  
Ø 4.7 mm  
L 9 mm  
CH 2 mm



ABT-5015-3  
Ø 4.7 mm  
L 10 mm  
CH 3 mm



ABT-5025-1  
Ø 4.7 mm  
L 8 mm  
CH 1 mm



ABT-5025-2  
Ø 4.7 mm  
L 9 mm  
CH 2 mm



ABT-5025-3  
Ø 4.7 mm  
L 10 mm  
CH 3 mm

ENGAGED HEXAGONAL CONNECTION

15° & 25° ANGULATED  
ANATOMIC TI-ABUTMENTS  
ABUTMENT SCREW INCLUDED  
8.3 mm (ABTS-2000)



# STRAIGHT CASTING ABUTMENTS FOR SINGLE AND MULTI-UNIT CEMENTED & SCREW-RETAINED RESTORATIONS

ABUTMENT SCREWS MANUFACTURED FROM BIOCOMPATIBLE MEDICAL GRADE 23 TI-ALLOY (Ti6AL4V ELI)

## STRAIGHT PLASTIC CASTING ABUTMENTS

ABUTMENT SCREW INCLUDED  
8.3 mm (ABTS-2000)



CAP-H10ST  
L 10.5 mm  
CH 1 mm  
HEX



CAP-H20ST  
L 11.5 mm  
CH 2 mm  
HEX



CAP-H30ST  
L 12.5 mm  
CH 3 mm  
HEX

ABUTMENT TORQUE  
30 Ncm



CAS-C10ST  
L 11 mm  
CH 1 mm  
CYLINDRICAL



CAS-H10ST  
L 11 mm  
CH 1 mm  
HEX

### PLASTIC BURNOUT INSTRUCTIONS

- Set the burnout temperature per the instructions of the casting metal supplier
- Keep the ring mold at burnout temperature for a minimum of 1 hour
- Cast as you would normally with a room temperature cool down

## STRAIGHT CrCo CASTING ABUTMENTS

ABUTMENT SCREW INCLUDED  
8.3 mm (ABTS-2000)



CAC-C10ST  
L 11 mm  
CH 1 mm  
CYLINDRICAL



CAC-H10ST  
L 11 mm  
CH 1 mm  
HEX

### CrCo BURNOUT INSTRUCTIONS

- Burnout material: Polyoxymethylene
- Set the burnout temperature per the instructions of the casting metal supplier
- Keep the ring mold at burnout temperature for a minimum of 1 hour
- Do not overheat metal casting by staying in the range of the casting metal company to avoid porosity
- Use CrCo Metal Alloy
- Cast as you would normally with a room temperature cool down

## STRAIGHT TI-ALLOY CASTING ABUTMENTS

ABUTMENT SCREW INCLUDED  
8.3 mm (ABTS-2000)



CAT-C10ST  
L 11 mm  
CH 1 mm  
CYLINDRICAL



CAT-H10ST  
L 11 mm  
CH 1 mm  
HEX

### TI-ALLOY BURNOUT INSTRUCTIONS

- Burnout material: Polyoxymethylene
- Set the burnout temperature per the instructions of the casting metal supplier
- Keep the ring mold at burnout temperature for a minimum of 1 hour
- Do not overheat metal casting by staying in the range of the casting metal company to avoid porosity
- Use Ti-Alloy
- Cast as you would normally with a room temperature cool down

# ANGULATED PLASTIC CASTING ABUTMENTS FOR SINGLE AND MULTI-UNIT CEMENTED RESTORATIONS

ABUTMENT SCREWS MANUFACTURED FROM BIOCOMPATIBLE MEDICAL GRADE 23 TI-ALLOY (Ti6AL4V ELI)

ABUTMENT TORQUE  
30 Ncm

15° ANGULATED  
PLASTIC CASTING ABUTMENTS  
ABUTMENT SCREW INCLUDED  
8.3 mm (ABTS-2000)



CAP-H1015  
L 9.9 mm  
CH 1 mm  
ENGAGED HEXAGONAL CONNECTION

CAP-H2015  
L 10.9 mm  
CH 2 mm

CAP-H3015  
L 11.9 mm  
CH 3 mm



ABTS-2000  
NOT IN STOCK

25° ANGULATED  
PLASTIC CASTING ABUTMENTS  
ABUTMENT SCREW INCLUDED  
8.3 mm (ABTS-2000)



CAP-H1025  
L 8.5 mm  
CH 1 mm  
ENGAGED HEXAGONAL CONNECTION

CAP-H2025  
L 9.5 mm  
CH 2 mm

CAP-H3025  
L 10.5 mm  
CH 3 mm

## PLASTIC BURNOUT INSTRUCTIONS

- Set the burnout temperature per the instructions of the casting metal supplier
- Keep the ring mold at burnout temperature for a minimum of 1 hour
- Cast as you would normally with a room temperature cool down



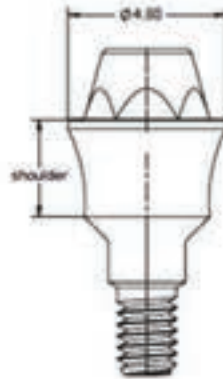
# STRAIGHT MULTI-UNIT ABUTMENTS FOR SCREW-RETAINED RESTORATIONS

ABUTMENTS & SCREWS MANUFACTURED FROM BIOCOMPATIBLE MEDICAL GRADE 23 TI-ALLOY (Ti6AL4V ELI)

ABUTMENT TORQUE 30 Ncm  
PROSTHETIC SCREW TORQUE 15 Ncm

## ONE PIECE STRAIGHT MULTI-UNIT ABUTMENTS PROSTHETIC SCREW INCLUDED (MUS-9170)

CARRIER MUT-001  
NOT IN STOCK



MUA-10ST  
Ø 4.8 mm  
CH 1 mm



MUA-20ST  
Ø 4.8 mm  
CH 2 mm



MUA-30ST  
Ø 4.8 mm  
CH 3 mm



MUA-40ST  
Ø 4.8 mm  
CH 4 mm



MUA-50ST  
Ø 4.8 mm  
CH 5 mm



MUPS-9181  
HEALING CAP SCREW  
INCLUDED WITH HEALING CAP



MUP-9160  
INCLUDES  
MUS-9170



MUP-9180  
CYLINDRICAL



MUP-9181  
CONICAL



MUS-9170  
PROSTHETIC  
SCREW

PLASTIC BURNOUT SLEEVE  
PROSTHETIC SCREW  
INCLUDED (MUS-9170)

### PLASTIC BURNOUT INSTRUCTIONS

- Set the burnout temperature per the instructions of the casting metal supplier
- Keep the ring mold at burnout temperature for a minimum of 1 hour
- Cast as you would normally with a room temperature cool down



MUS-9170  
PROSTHETIC  
SCREW



SRA-8131  
CONICAL



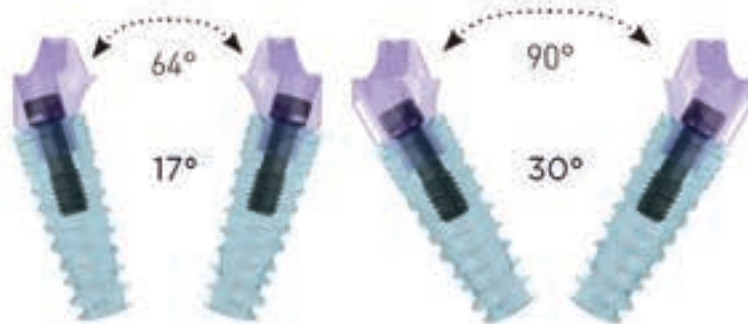
# ANGULATED MULTI-UNIT ABUTMENTS FOR SCREW-RETAINED RESTORATIONS

ABUTMENTS & SCREWS MANUFACTURED FROM BIOCOMPATIBLE MEDICAL GRADE 23 TI-ALLOY (Ti6AL4V ELI)

ABUTMENT TORQUE  
30 Ncm

PROSTHETIC SCREW TORQUE  
15 Ncm

17° & 30° ANGULATED MULTI-UNIT ABUTMENTS  
ABUTMENT SCREW INCLUDED (MUAS-2002)  
PROSTHETIC SCREW INCLUDED (MUS-9170)



DIVERGENCE ANGLES POSSIBLE

MULTI-UNIT  
TEMPORARY ABUTMENT  
HEALING CAPS  
& PROSTHETIC SCREW



MUA-0217  
17°  
CH 2 mm

MUA-0317  
17°  
CH 3 mm

MUA-0330  
30°  
CH 3 mm

MUA-0430  
30°  
CH 4 mm

ENGAGED HEXAGONAL CONNECTION



MUP-9160  
INCLUDES  
MUS-9170



MUP-9180  
CYLINDRICAL

MUP-9181  
CONICAL



MUS-9170  
PROSTHETIC  
SCREW

## PLASTIC BURNOUT INSTRUCTIONS

- Set the burnout temperature per the instructions of the casting metal supplier
- Keep the ring mold at burnout temperature for a minimum of 1 hour
- Cast as you would normally with a room temperature cool down

PLASTIC BURNOUT SLEEVE  
PROSTHETIC SCREW  
INCLUDED (MUS-9170)



MUS-9170  
PROSTHETIC  
SCREW



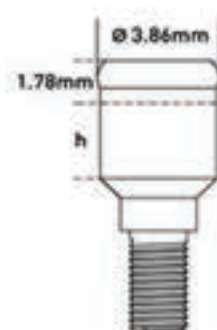
SRA-8131  
CONICAL

## OVERDENTURE ABUTMENTS

ABUTMENTS & SCREWS MANUFACTURED FROM BIOCOMPATIBLE MEDICAL GRADE 23 TI-ALLOY (Ti6AL4V ELI)

ABUTMENT TORQUE  
30 Ncm

### LIBERATOR® OVERDENTURE ABUTMENTS



LIB-ABT10 LIB-ABT20 LIB-ABT30 LIB-ABT40 LIB-ABT50  
NON-ENGAGED CYLINDRICAL CONNECTION



LIB-PACK



LIB-LAB

LIB-SPACER

LIB-TCAP



LIB-CAP96



LIB-CAP97



LIB-CAP99



LIB-TR  
LIBERATOR  
TRANSFER



LIB-ANA01  
LIBERATOR  
RETENTION  
ANALOG



LIB-KEY



## OVERDENTURE ABUTMENTS

ABUTMENTS & SCREWS MANUFACTURED FROM BIOCOMPATIBLE MEDICAL GRADE 23 TI-ALLOY (Ti6AL4V ELI)

ABUTMENT TORQUE  
30 Ncm

### OVERDENTURE BALL ATTACHMENT ABUTMENTS



BAL-DSK



BAL-MC

NO  
PHOTO

BAL-SCH



BAL-SCN



BAL-SCS



MUB-9237  
BALL SCREW  
MULTI-UNIT



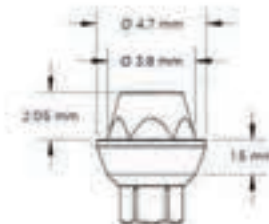
# LEGACY STRAIGHT ABUTMENTS FOR SCREW-RETAINED RESTORATIONS

ABUTMENTS & SCREWS MANUFACTURED FROM BIOCOMPATIBLE MEDICAL GRADE 23 TI-ALLOY (Ti6AL4V ELI)

ABUTMENT TORQUE  
30 Ncm

LEGACY SCREW-RETAINED TI-ABUTMENTS  
ABUTMENT SCREW INCLUDED  
(SRAS-8005-1, SRAS-8015-1 & SRAS-8025-1)

PLASTIC BURNOUT SLEEVES  
NO SCREW INCLUDED  
USE ABUTMENT SCREWS  
(SRAS-8005-1, SRAS-8015-1  
& SRAS-8025-1)



SRA-8005  
Ø 4.8 mm  
CH 0.5 mm  
ENGAGED HEXAGONAL CONNECTION

SRA-8015  
Ø 4.8 mm  
CH 1.5 mm  
ENGAGED HEXAGONAL CONNECTION

SRA-8025  
Ø 4.8 mm  
CH 2.5 mm  
ENGAGED HEXAGONAL CONNECTION

SRAS-8005-1  
L 10.5 mm

SRAS-8015-1  
L 11.5 mm

SRAS-8025-1  
L 12.5 mm

## PLASTIC BURNOUT INSTRUCTIONS

- Set the burnout temperature per the instructions of the casting metal supplier
- Keep the ring mold at burnout temperature for a minimum of 1 hour
- Cast as you would normally with a room temperature cool down



*GREAT FOR AEROSPACE...*



*EVEN BETTER FOR YOUR PATIENTS*

# *CAD/CAM DIGITAL WORKFLOW*





*SCAN*



*DESIGN*



*CREATE*

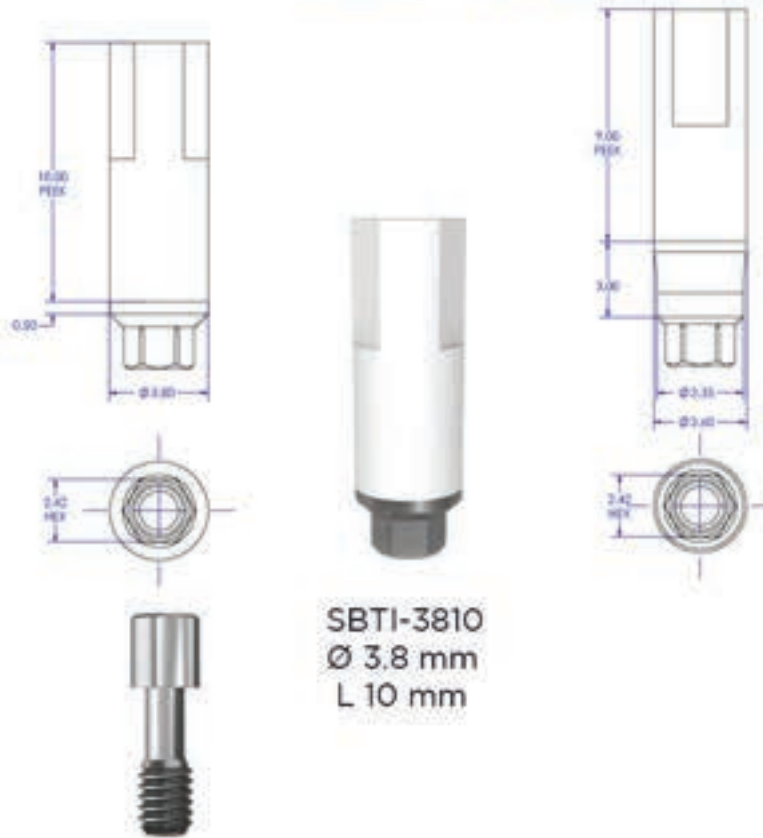
## CAD/CAM DIGITAL WORKFLOW

ABUTMENTS & SCREWS MANUFACTURED FROM BIOCOMPATIBLE MEDICAL GRADE 23 TI-ALLOY (Ti6AL4V ELI)

ABUTMENT TORQUE  
30 Ncm

PROSTHETIC SCREW TORQUE  
15 Ncm

IMPLANT SCAN BODY (NO POWDER REQUIRED)  
ABUTMENT SCREW INCLUDED  
8.3 mm (ABTS-2000)



SBTI-3810  
Ø 3.8 mm  
L 10 mm

SBTI-3612  
Ø 3.6 mm  
L 12 mm

ABTS-2000  
NOT IN STOCK

exocad dental.wings 3shape

MULTI-UNIT SCAN BODY (NO POWDER REQUIRED)  
PROSTHETIC SCREW INCLUDED (MUS-9170)



MUSB-4807



MUS-9170  
PROSTHETIC SCREW

IMPLANT &  
MULTI-UNIT  
DIGITAL ANALOGS



IDA-2030  
IMPLANT



MUDA-2040  
MULTI-UNIT



SDA-8040  
REPLACEMENT  
SCREW

## CAD/CAM DIGITAL WORKFLOW

ABUTMENTS & SCREWS MANUFACTURED FROM BIOCOMPATIBLE MEDICAL GRADE 23 TI-ALLOY (Ti6AL4V ELI)

ABUTMENT TORQUE  
30 Ncm

PROSTHETIC SCREW TORQUE  
15 Ncm

### IMPLANT

#### PRE-MILLED TI-BLANKS

ABUTMENT SCREW INCLUDED 8.3 mm (ABTS-2000)



BLKT-8220-9  
Ø 9 mm

ENGAGED HEXAGONAL CONNECTION



BLKT-8220-12  
Ø 12 mm



ABTS-2000  
NOT IN STOCK

### MULTI-UNIT

#### PRE-MILLED TI-BLANKS

PROSTHETIC SCREW INCLUDED (MUS-9170)



BLKMU-8220-6  
Ø 6 mm



MUS-9170  
PROSTHETIC SCREW



Imagine™

Imagine USA Milling Center  
David Frucht  
C: 661.904.7140  
E: david@imagineusa.com



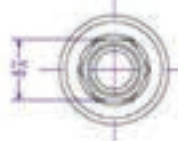
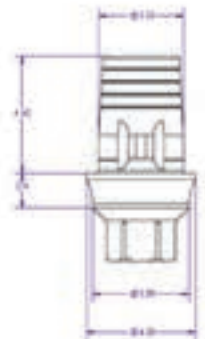
## CAD/CAM DIGITAL WORKFLOW

ABUTMENTS & SCREWS MANUFACTURED FROM BIOCOMPATIBLE MEDICAL GRADE 23 TI-ALLOY (Ti6AL4V ELI)

ABUTMENT TORQUE  
30 Ncm

PROSTHETIC SCREW TORQUE  
15 Ncm

### STANDARD TI-BASES ABUTMENT SCREW INCLUDED (ABTS-2000)



TBCL-8232-06  
Ø 3.8 mm  
CH 0.6 mm



TBCL-8232-15  
Ø 3.8 mm  
CH 1.5 mm



TBCL-8232-25  
Ø 3.8 mm  
CH 2.5 mm

NON-ENGAGED CYLINDRICAL CONNECTION

NOTE: These  
3 Ti-Base  
were formerly  
listed as:  
TBCL-8131-06  
TBCL-8131-15  
TBCL-8131-25



SBDY-8200  
TI-BASE  
NO POWDER REQUIRED



ABTS-2000  
**NOT IN STOCK**



SBDY-8200  
ON  
TI-BASE



TBHX-8230-06  
Ø 3.8 mm  
CH 0.6 mm



TBHX-8230-15  
Ø 3.8 mm  
CH 1.5 mm



TBHX-8230-25  
Ø 3.8 mm  
CH 2.5 mm

ENGAGED  
HEXAGONAL CONNECTION

NOTE: Ti-Base  
TBHX-8230-06  
was formerly  
listed as  
TBHX-8230

### MULTI-UNIT TI-BASES PROSTHETIC SCREW INCLUDED (MUS-9170)



TBMU-8245  
CH 0.65 mm



TBMU-8235  
CH 2.5 mm



MUS-9170  
PROSTHETIC  
SCREW

# CAD/CAM DIGITAL WORKFLOW

ABUTMENTS & SCREWS MANUFACTURED FROM BIOCOMPATIBLE MEDICAL GRADE 23 TI-ALLOY (Ti6AL4V ELI)

ABUTMENT TORQUE  
30 Ncm

PROSTHETIC SCREW TORQUE  
15 Ncm

## MINI TI-BASES ABUTMENT SCREW INCLUDED (ABTS-2000)



TBCL-8231-06  
Ø 3.8 mm  
CH 0.6 mm  
NON-ENGAGED CYLINDRICAL CONNECTION

TBCL-8231-15  
Ø 3.8 mm  
CH 1.5 mm  
NON-ENGAGED CYLINDRICAL CONNECTION

TBCL-8231-25  
Ø 3.8 mm  
CH 2.5 mm  
NON-ENGAGED CYLINDRICAL CONNECTION



SBDY-8200  
TI-BASE  
NO POWDER REQUIRED



SBDY-8200  
ON  
TI-BASE



ABTS-2000  
NOT IN STOCK

## SLIM TI-BASES FOR Ø 3.3 & 3.5 mm IMPLANTS ABUTMENT SCREW INCLUDED (ABTS-2000)



TBCL-8241-15  
Ø 3.35 mm  
CH 1.5 mm  
NON-ENGAGED  
CYLINDRICAL CONNECTION



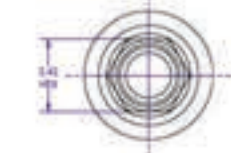
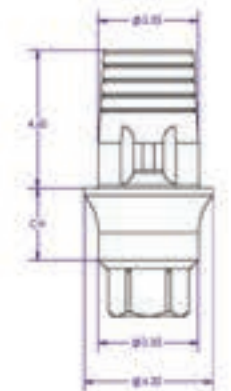
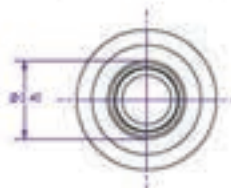
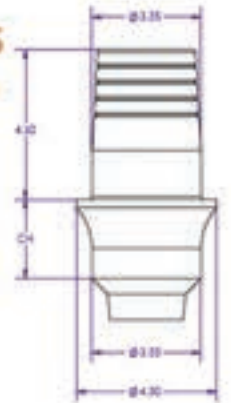
TBCL-8241-25  
Ø 3.35 mm  
CH 2.5 mm  
NON-ENGAGED  
CYLINDRICAL CONNECTION



TBHX-8240-15  
Ø 3.35 mm  
CH 1.5 mm  
ENGAGED  
HEXAGONAL CONNECTION

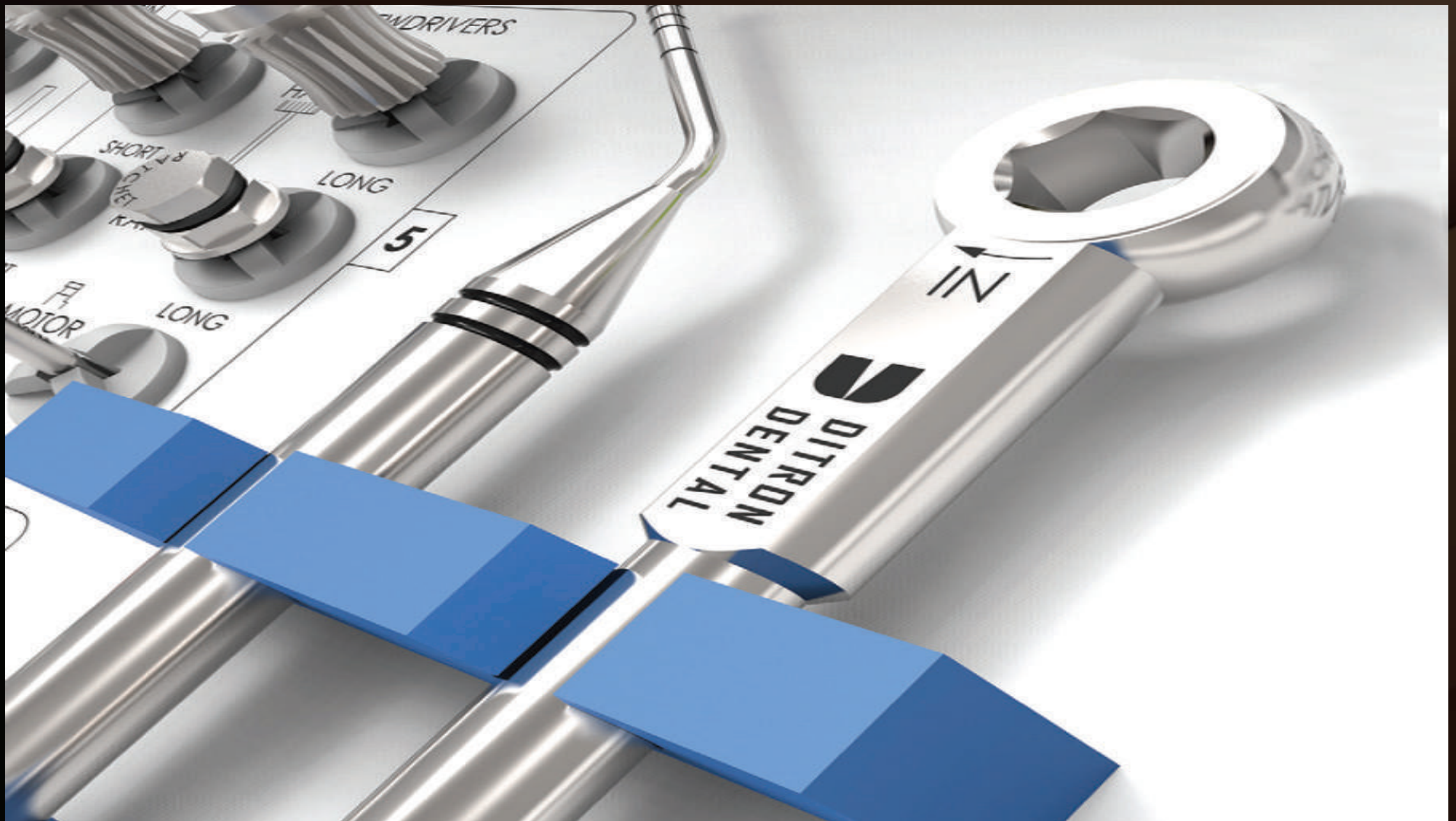


TBHX-8240-25  
Ø 3.35 mm  
CH 2.5 mm  
ENGAGED  
HEXAGONAL CONNECTION



# *SURGICAL KITS, DRILLS & INSTRUMENTS*





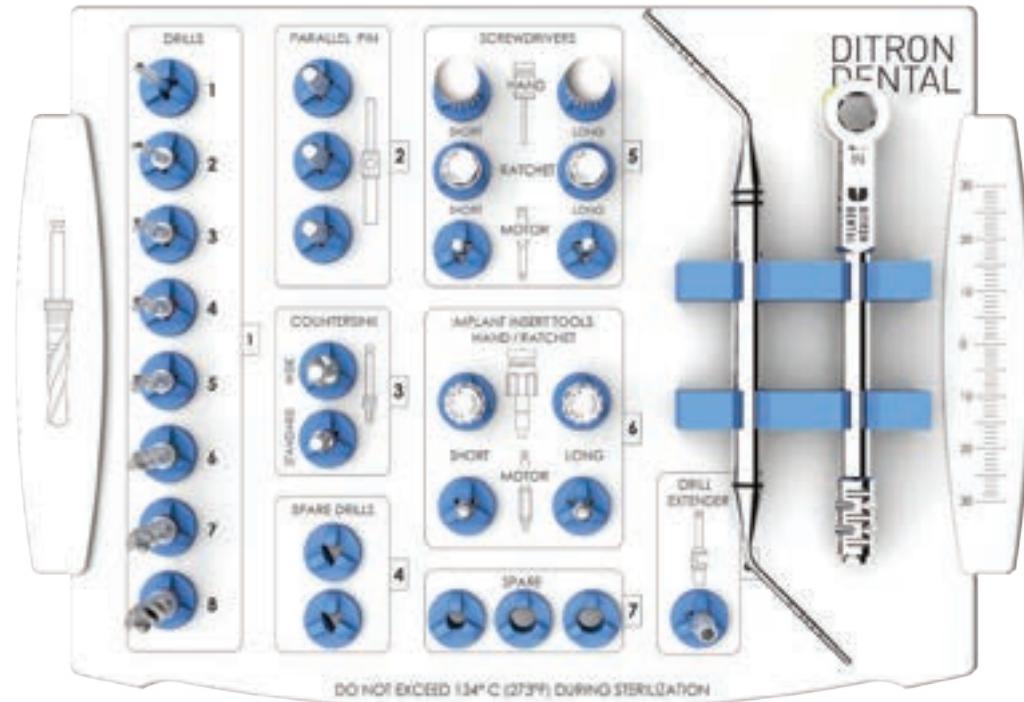
# SURGICAL KITS

## FULL SURGICAL KIT



FULL SURGICAL KIT: FSBOX001

FULL SURGICAL CARBON DRILL KIT: FSBOX-001C



### STAINLESS STEEL DRILLS

- MARKING DRILL Ø 1.9 mm L 16 mm: DRM19-300419
- PILOT DRILL Ø 2 mm L 16 mm: DRP20-300420
- TWIST DRILL Ø 2.5 mm L 16 mm: DRT25-300425
- TWIST DRILL Ø 2.8 mm L 16 mm: DRT28-300428
- TWIST DRILL Ø 3.2 mm L 16 mm: DRT32-300432
- TWIST DRILL Ø 3.8 mm L 16 mm: DRT38-300438
- TWIST DRILL Ø 4.5 mm L 16 mm: DRT45-300445
- TWIST DRILL Ø 5.0 mm L 16 mm: DRT50-300450

### CARBON COATED DRILLS

- PILOT DRILL Ø 2 mm L 16 mm: PD200L16C
- TWIST DRILL Ø 2.5 mm L 16 mm: TD250L16C
- TWIST DRILL Ø 2.8 mm L 16 mm: TD280L16C
- TWIST DRILL Ø 3.2 mm L 16 mm: TD320L16C
- TWIST DRILL Ø 3.8 mm L 16 mm: TD380L16C
- TWIST DRILL Ø 4.5 mm L 16 mm: TD450L16C
- TWIST DRILL Ø 5.0 mm L 16 mm: TD500L16C

### STAINLESS STEEL COUNTERSINK

- Ø 3.75/4.2 mm: DRCS-300510
- Ø 5-6 mm: DRCW-300520

### CARBON COATED COUNTERSINK

- Ø 3.75/4.2 mm: CD3.75X4.2C
- Ø 5-6 mm: CD5.0X6.0C

### INSTRUMENTS IMPLANT INSERTION

- SHORT HAND & RACHET KEY 2.45 mm HEX/1.25 mm CONICAL HEX L 26 mm: THKS-200290
- LONG HAND & RACHET KEY 2.45 mm HEX/1.25 mm CONICAL HEX L 29 mm: THKL-200300
- SHORT MOTOR INSERTION INSTRUMENT 2.45 mm HEX/1.25 mm CONICAL HEX L 23 mm: TMAS-200250
- LONG MOTOR INSERTION INSTRUMENT 2.45 mm HEX/1.25 mm CONICAL HEX L 26.5 mm: TMAL-200260

### INSTRUMENTS ABUTMENT INSERTION

- SHORT HAND KEY 1.25 mm HEX L 22 mm: THSS-200210
- LONG HAND KEY 1.25 mm HEX L 28 mm: THSL-200220
- SHORT HAND & RACHET KEY 1.25 mm HEX: TRAS-200230
- LONG HAND & RACHET KEY 1.25 mm HEX: TRAL-200240
- SHORT MOTOR ADAPTER FOR 1.25 mm HEX L 22 mm: TMAS-200270
- LONG MOTOR ADAPTER FOR 1.25 mm HEX L 30 mm: TMAL-200280

### INSTRUMENTS MISCELLANEOUS

- PARALLEL PINS Ø 2-3 mm L 24 mm: TPP-200330
- DRILL EXTENDER L 29 mm: DREX-300500
- DEPTH PROBE: TDP-200320
- RACHET WRENCH: RW-200311



# SURGICAL KITS

## MINI SURGICAL KIT



MINI SURGICAL KIT: MSBOX002

MINI SURGICAL CARBON DRILL KIT: MSBOX002C



### STAINLESS STEEL DRILLS

- MARKING DRILL Ø 1.9 mm L 16 mm: DRM19-300419
- PILOT DRILL Ø 2 mm L 16 mm: DRP20-300420
- TWIST DRILL Ø 2.5 mm L 16 mm: DRT25-300425
- TWIST DRILL Ø 2.8 mm L 16 mm: DRT28-300428
- TWIST DRILL Ø 3.2 mm L 16 mm: DRT32-300432
- TWIST DRILL Ø 3.8 mm L 16 mm: DRT38-300438

### CARBON COATED DRILLS

- PILOT DRILL Ø 2 mm L 16 mm: PD200L16C
- TWIST DRILL Ø 2.5 mm L 16 mm: TD250L16C
- TWIST DRILL Ø 2.8 mm L 16 mm: TD280L16C
- TWIST DRILL Ø 3.2 mm L 16 mm: TD320L16C
- TWIST DRILL Ø 3.8 mm L 16 mm: TD380L16C

### STAINLESS STEEL COUNTERSINK

- Ø 3.75/4.2 mm: DRCS-300510

### CARBON COATED COUNTERSINK

- Ø 3.75/4.2 mm: CD3.75X4.2C

### INSTRUMENTS IMPLANT INSERTION

- SHORT HAND & RACHET KEY 2.45 mm HEX/1.25 mm CONICAL HEX L 26 mm: THKS-200290
- LONG HAND & RACHET KEY 2.45 mm HEX/1.25 mm CONICAL HEX L 29 mm: THKL-200300
- SHORT MOTOR INSERTION INSTRUMENT 2.45 mm HEX/1.25 mm CONICAL HEX L 23 mm: TMAS-200250
- LONG MOTOR INSERTION INSTRUMENT 2.45 mm HEX/1.25 mm CONICAL HEX L 26.5 mm: TMAL-200260

### INSTRUMENTS ABUTMENT INSERTION

- SHORT HAND & RACHET KEY 1.25 mm HEX: TRAS-200230
- LONG HAND & RACHET KEY 1.25 mm HEX: TRAL-200240
- SHORT MOTOR ADAPTER FOR 1.25 mm HEX L 22 mm: TMAS-200270
- LONG MOTOR ADAPTER FOR 1.25 mm HEX L 30 mm: TMAL-200280

### INSTRUMENTS MISCELLANEOUS

- DRILL EXTENDER L 29 mm: DREX-300500
- RACHET WRENCH (LOCATED IN THE BOTTOM OF THE TRAY): RW-200311



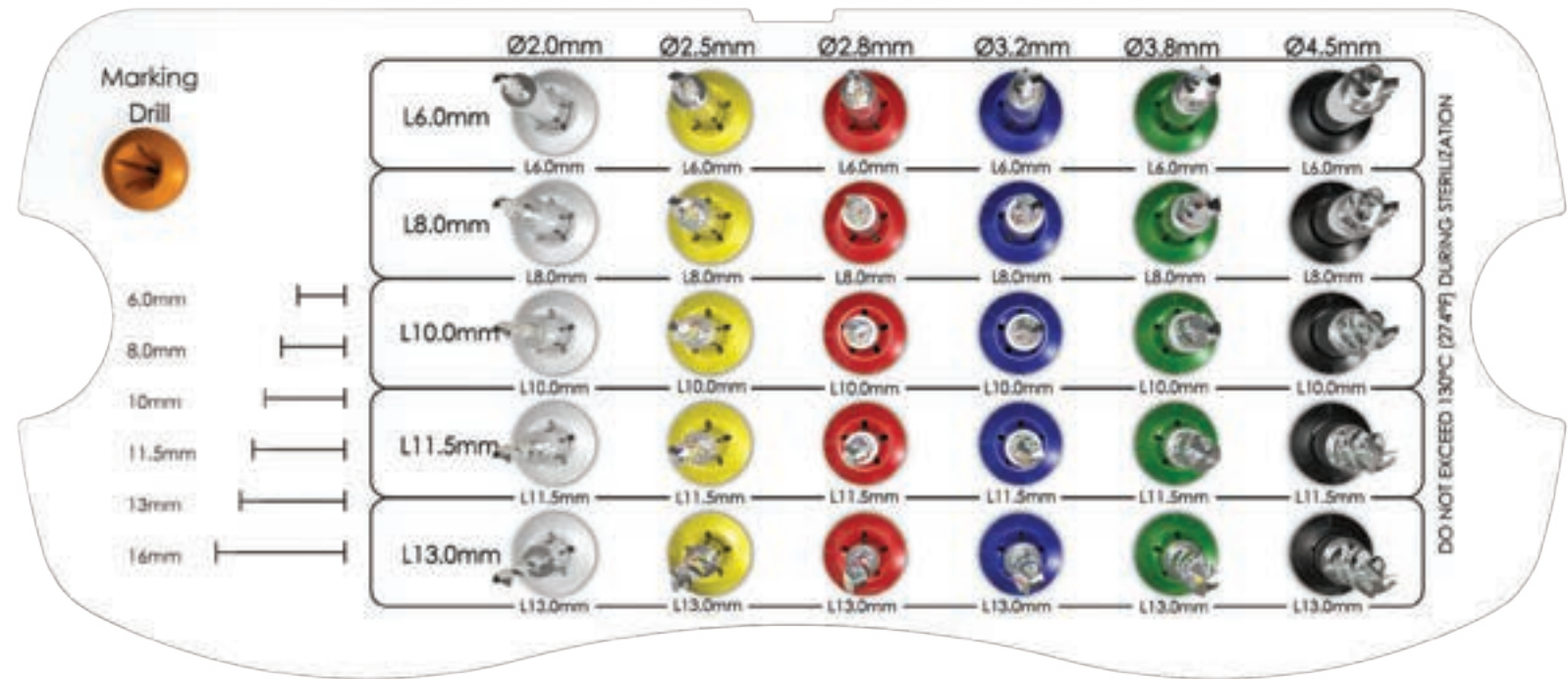
# SURGICAL KITS

## FULL DRILL STOPPER KIT



FULL DRILL STOPPER KIT: DISKIT

FULL CARBON DRILL STOPPER KIT: DISKIT-C



### STAINLESS STEEL DRILLS

- MARKING DRILL Ø 1.9 mm L 16 mm: DRM19-300419
- DRILL WITH INTEGRAL STOPPER Ø 2 mm L 6 mm: DPIS-200L06
- DRILL WITH INTEGRAL STOPPER Ø 2.5 mm L 6 mm: DRIS-250L06
- DRILL WITH INTEGRAL STOPPER Ø 2.8 mm L 6 mm: DRIS-280L06
- DRILL WITH INTEGRAL STOPPER Ø 3.2 mm L 6 mm: DRIS-320L06
- DRILL WITH INTEGRAL STOPPER Ø 3.8 mm L 6 mm: DRIS-380L06
- DRILL WITH INTEGRAL STOPPER Ø 4.5 mm L 6 mm: DRIS-450L06
- DRILL WITH INTEGRAL STOPPER Ø 2 mm L 8 mm: DPIS-200L08
- DRILL WITH INTEGRAL STOPPER Ø 2.5 mm L 8 mm: DRIS-250L08
- DRILL WITH INTEGRAL STOPPER Ø 2.8 mm L 8 mm: DRIS-280L08
- DRILL WITH INTEGRAL STOPPER Ø 3.2 mm L 8 mm: DRIS-320L08
- DRILL WITH INTEGRAL STOPPER Ø 3.8 mm L 8 mm: DRIS-380L08
- DRILL WITH INTEGRAL STOPPER Ø 4.5 mm L 8 mm: DRIS-450L08
- DRILL WITH INTEGRAL STOPPER Ø 2 mm L 10 mm: DPIS-200L10
- DRILL WITH INTEGRAL STOPPER Ø 2.5 mm L 10 mm: DRIS-250L10
- DRILL WITH INTEGRAL STOPPER Ø 2.8 mm L 10 mm: DRIS-280L10
- DRILL WITH INTEGRAL STOPPER Ø 3.2 mm L 10 mm: DRIS-320L10
- DRILL WITH INTEGRAL STOPPER Ø 3.8 mm L 10 mm: DRIS-380L10
- DRILL WITH INTEGRAL STOPPER Ø 4.5 mm L 10 mm: DRIS-450L10
- DRILL WITH INTEGRAL STOPPER Ø 2 mm L 11.5 mm: DPIS-200L11
- DRILL WITH INTEGRAL STOPPER Ø 2.5 mm L 11.5 mm: DRIS-250L11

### STAINLESS STEEL DRILLS CONTINUED

- DRILL WITH INTEGRAL STOPPER Ø 2.8 mm L 11.5mm: DRIS-280L11
- DRILL WITH INTEGRAL STOPPER Ø 3.2 mm L 11.5 mm: DRIS-320L11
- DRILL WITH INTEGRAL STOPPER Ø 3.8 mm L 11.5 mm: DRIS-380L11
- DRILL WITH INTEGRAL STOPPER Ø 4.5 mm L 11.5 mm: DRIS-450L11
- DRILL WITH INTEGRAL STOPPER Ø 2 mm L 13 mm: DPIS-200L13
- DRILL WITH INTEGRAL STOPPER Ø 2.5 mm L 13 mm: DRIS-250L13
- DRILL WITH INTEGRAL STOPPER Ø 2.8 mm L 13 mm: DRIS-280L13
- DRILL WITH INTEGRAL STOPPER Ø 3.2 mm L 13 mm: DRIS-320L13
- DRILL WITH INTEGRAL STOPPER Ø 3.8 mm L 13 mm: DRIS-380L13
- DRILL WITH INTEGRAL STOPPER Ø 4.5 mm L 13 mm: DRIS-450L13

### CARBON COATED

- DRILL WITH INTEGRAL STOPPER Ø 2 mm L 6 mm: PD200L6SC
- DRILL WITH INTEGRAL STOPPER Ø 2.5 mm L 6 mm: TD250L6SC
- DRILL WITH INTEGRAL STOPPER Ø 2.8 mm L 6 mm: TD280L6SC
- DRILL WITH INTEGRAL STOPPER Ø 3.2 mm L 6 mm: TD320L6SC
- DRILL WITH INTEGRAL STOPPER Ø 3.8 mm L 6 mm: TD380L6SC
- DRILL WITH INTEGRAL STOPPER Ø 4.5 mm L 6 mm: TD450L6SC
- DRILL WITH INTEGRAL STOPPER Ø 2 mm L 8 mm: PD200L8SC
- DRILL WITH INTEGRAL STOPPER Ø 2.5 mm L 8 mm: TD250L8SC
- DRILL WITH INTEGRAL STOPPER Ø 2.8 mm L 8 mm: TD280L8SC
- DRILL WITH INTEGRAL STOPPER Ø 3.2 mm L 8 mm: TD320L8SC

### CARBON COATED CONTINUED

- DRILL WITH INTEGRAL STOPPER Ø 3.8 mm L 8 mm: TD380L8SC
- DRILL WITH INTEGRAL STOPPER Ø 4.5 mm L 8 mm: TD450L8SC
- DRILL WITH INTEGRAL STOPPER Ø 2 mm L 10 mm: PD200L10SC
- DRILL WITH INTEGRAL STOPPER Ø 2.5 mm L 10 mm: TD250L10SC
- DRILL WITH INTEGRAL STOPPER Ø 2.8 mm L 10 mm: TD280L10SC
- DRILL WITH INTEGRAL STOPPER Ø 3.2 mm L 10 mm: TD320L10SC
- DRILL WITH INTEGRAL STOPPER Ø 3.8 mm L 10 mm: TD380L10SC
- DRILL WITH INTEGRAL STOPPER Ø 4.5 mm L 10 mm: TD450L10SC
- DRILL WITH INTEGRAL STOPPER Ø 2 mm L 11.5 mm: PD200L11.5SC
- DRILL WITH INTEGRAL STOPPER Ø 2.5 mm L 11.5 mm: TD250L11.5SC
- DRILL WITH INTEGRAL STOPPER Ø 2.8 mm L 11.5mm: TD280L11.5SC
- DRILL WITH INTEGRAL STOPPER Ø 3.2 mm L 11.5 mm: TD320L11.5SC
- DRILL WITH INTEGRAL STOPPER Ø 3.8 mm L 11.5 mm: TD380L11.5SC
- DRILL WITH INTEGRAL STOPPER Ø 4.5 mm L 11.5 mm: TD450L11.5SC
- DRILL WITH INTEGRAL STOPPER Ø 2 mm L 13 mm: PD200L13SC
- DRILL WITH INTEGRAL STOPPER Ø 2.5 mm L 13 mm: TD250L13SC
- DRILL WITH INTEGRAL STOPPER Ø 2.8 mm L 13 mm: TD280L13SC
- DRILL WITH INTEGRAL STOPPER Ø 3.2 mm L 13 mm: TD320L13SC
- DRILL WITH INTEGRAL STOPPER Ø 3.8 mm L 13 mm: TD380L13SC
- DRILL WITH INTEGRAL STOPPER Ø 4.5 mm L 13 mm: TD450L13SC

# SURGICAL KITS

## D-TUBE & SURGICAL TUBE

STAINLESS STEEL DRILLS: D-TUBE  
CARBON COATED DRILLS: DC-TUBE



SURGICAL TUBE: MMBOX-003  
SURGICAL CARBON DRILL TUBE: MMBOX-003C



### STAINLESS STEEL DRILLS

- DRILL WITH INTEGRAL STOPPER Ø 2 mm L 8 mm: DPIS-200L08
- DRILL WITH INTEGRAL STOPPER Ø 2.5 mm L 8 mm: DRIS-250L08
- DRILL WITH INTEGRAL STOPPER Ø 2.8 mm L 8 mm: DRIS-280L08
- DRILL WITH INTEGRAL STOPPER Ø 3.2 mm L 8 mm: DRIS-320L08
- DRILL WITH INTEGRAL STOPPER Ø 3.8 mm L 8 mm: DRIS-380L08
- DRILL WITH INTEGRAL STOPPER Ø 2 mm L 10 mm: DPIS-200L10
- DRILL WITH INTEGRAL STOPPER Ø 2.5 mm L 10 mm: DRIS-250L10
- DRILL WITH INTEGRAL STOPPER Ø 2.8 mm L 10 mm: DRIS-280L10
- DRILL WITH INTEGRAL STOPPER Ø 3.2 mm L 10 mm: DRIS-320L10
- DRILL WITH INTEGRAL STOPPER Ø 3.8 mm L 10 mm: DRIS-380L10
- DRILL WITH INTEGRAL STOPPER Ø 2 mm L 11.5 mm: DPIS-200L11
- DRILL WITH INTEGRAL STOPPER Ø 2.5 mm L 11.5 mm: DRIS-250L11
- DRILL WITH INTEGRAL STOPPER Ø 2.8 mm L 11.5mm: DRIS-280L11
- DRILL WITH INTEGRAL STOPPER Ø 3.2 mm L 11.5 mm: DRIS-320L11
- DRILL WITH INTEGRAL STOPPER Ø 3.8 mm L 11.5 mm: DRIS-380L11
- DRILL WITH INTEGRAL STOPPER Ø 2 mm L 13 mm: DPIS-200L13
- DRILL WITH INTEGRAL STOPPER Ø 2.5 mm L 13 mm: DRIS-250L13
- DRILL WITH INTEGRAL STOPPER Ø 2.8 mm L 13 mm: DRIS-280L13
- DRILL WITH INTEGRAL STOPPER Ø 3.2 mm L 13 mm: DRIS-320L13
- DRILL WITH INTEGRAL STOPPER Ø 3.8 mm L 13 mm: DRIS-380L13

### CARBON COATED

- DRILL WITH INTEGRAL STOPPER Ø 2 mm L 8 mm: PD200L8SC
- DRILL WITH INTEGRAL STOPPER Ø 2.5 mm L 8 mm: TD250L8SC
- DRILL WITH INTEGRAL STOPPER Ø 2.8 mm L 8 mm: TD280L8SC
- DRILL WITH INTEGRAL STOPPER Ø 3.2 mm L 8 mm: TD320L8SC
- DRILL WITH INTEGRAL STOPPER Ø 3.8 mm L 8 mm: TD380L8SC
- DRILL WITH INTEGRAL STOPPER Ø 2 mm L 10 mm: PD200L10SC
- DRILL WITH INTEGRAL STOPPER Ø 2.5 mm L 10 mm: TD250L10SC
- DRILL WITH INTEGRAL STOPPER Ø 2.8 mm L 10 mm: TD280L10SC
- DRILL WITH INTEGRAL STOPPER Ø 3.2 mm L 10 mm: TD320L10SC
- DRILL WITH INTEGRAL STOPPER Ø 3.8 mm L 10 mm: TD380L10SC
- DRILL WITH INTEGRAL STOPPER Ø 2 mm L 11.5 mm: PD200L11.5SC
- DRILL WITH INTEGRAL STOPPER Ø 2.5 mm L 11.5 mm: TD250L11.5SC
- DRILL WITH INTEGRAL STOPPER Ø 2.8 mm L 11.5mm: TD280L11.5SC
- DRILL WITH INTEGRAL STOPPER Ø 3.2 mm L 11.5 mm: TD320L11.5SC
- DRILL WITH INTEGRAL STOPPER Ø 3.8 mm L 11.5 mm: TD380L11.5SC
- DRILL WITH INTEGRAL STOPPER Ø 2 mm L 13 mm: PD200L13SC
- DRILL WITH INTEGRAL STOPPER Ø 2.5 mm L 13 mm: TD250L13SC
- DRILL WITH INTEGRAL STOPPER Ø 2.8 mm L 13 mm: TD280L13SC
- DRILL WITH INTEGRAL STOPPER Ø 3.2 mm L 13 mm: TD320L13SC
- DRILL WITH INTEGRAL STOPPER Ø 3.8 mm L 13 mm: TD380L13SC

### INSTRUMENTS

- LONG HAND & RACHET KEY 2.45 mm HEX/1.25 mm CONICAL HEX (IMPLANT INSERTION): THKL-200300
- LONG HAND & RACHET KEY 1.25 mm HEX (ABUTMENT INSERTION): TRAL-200240
- SHORT RACHET WRENCH: SRW-200312

### STAINLESS STEEL DRILLS

- MARKING DRILL Ø 1.9 mm L 16 mm: DRM19-300419
- PILOT DRILL Ø 2 mm L 16 mm: DRP20-300420
- TWIST DRILL Ø 2.8 mm L 16 mm: DRT28-300428
- TWIST DRILL Ø 3.2 mm L 16 mm: DRT32-300432
- TWIST DRILL Ø 3.8 mm L 16 mm: DRT38-300438

### CARBON COATED DRILLS

- PILOT DRILL Ø 2 mm L 16 mm: PD200L16C
- TWIST DRILL Ø 2.8 mm L 16 mm: TD280L16C
- TWIST DRILL Ø 3.2 mm L 16 mm: TD320L16C
- TWIST DRILL Ø 3.8 mm L 16 mm: TD380L16C



# SURGICAL CARBON COATED DRILLS \*

## TISSUE PUNCH



DRTP-300300 Ø 3 mm  
DRTP-300400 Ø 4 mm  
DRTP-300450 Ø 4.5 mm  
DRTP-300500 Ø 5 mm

## MARKING DRILL



DRM19-300419 Ø 1.9 mm L 16 mm

## PILOT DRILLS: LONG & SHORT EXTERNAL IRRIGATION



### STAINLESS STEEL

DRP20-300420 Ø 2 mm L 16 mm  
DRPS20-400020 Ø 2 mm L 11.5 mm

### CARBON COATED

PD200L16C Ø 2 mm L 16 mm

## COUNTERSINK



### STAINLESS STEEL

DRCS-300510 Ø 3.75/4.2 mm  
DRCW-300520 Ø 5/6 mm

### CARBON COATED

CD3.75X4.2C Ø 3.75/4.2 mm  
CD5.0X6.0C Ø 5/6 mm

## TREPHINE DRILL



DRTB-303040 Outer Ø 4 mm Inner Ø 3 mm L 16 mm  
DRTB-304050 Outer Ø 5 mm Inner Ø 4 mm L 16 mm  
DRTB-305060 Outer Ø 6 mm Inner Ø 5 mm L 16 mm

## DRILL EXTENDER



DREX-300500  
L 29 mm



# SURGICAL CARBON COATED DRILLS \*

## INTEGRAL STOPPER DRILLS



### STAINLESS STEEL

DPIS-200L06 Ø 2 mm L 6 mm  
 DPIS-200L08 Ø 2 mm L 8 mm  
 DPIS-200L10 Ø 2 mm L 10 mm  
 DPIS-200L11 Ø 2 mm L 11.5 mm  
 DPIS-200L13 Ø 2 mm L 13 mm  
 DRIS-250L06 Ø 2.5 mm L 6 mm  
 DRIS-250L08 Ø 2.5 mm L 8 mm  
 DRIS-250L10 Ø 2.5 mm L 10 mm  
 DRIS-250L11 Ø 2.5 mm L 11.5 mm  
 DRIS-250L13 Ø 2.5 mm L 13 mm  
 DRIS-280L06 Ø 2.8 mm L 6 mm  
 DRIS-280L08 Ø 2.8 mm L 8 mm  
 DRIS-280L10 Ø 2.8 mm L 10 mm  
 DRIS-280L11 Ø 2.8 mm L 11.5 mm  
 DRIS-280L13 Ø 2.8 mm L 13 mm  
 DRIS-320L06 Ø 3.2 mm L 6 mm  
 DRIS-320L08 Ø 3.2 mm L 8 mm  
 DRIS-320L10 Ø 3.2 mm L 10 mm  
 DRIS-320L11 Ø 3.2 mm L 11.5 mm  
 DRIS-320L13 Ø 3.2 mm L 13 mm  
 DRIS-380L06 Ø 3.8 mm L 6 mm  
 DRIS-380L08 Ø 3.8 mm L 8 mm  
 DRIS-380L10 Ø 3.8 mm L 10 mm  
 DRIS-380L11 Ø 3.8 mm L 11.5 mm  
 DRIS-380L13 Ø 3.8 mm L 13 mm  
 DRIS-450L06 Ø 4.5 mm L 6 mm  
 DRIS-450L08 Ø 4.5 mm L 8 mm  
 DRIS-450L10 Ø 4.5 mm L 10 mm  
 DRIS-450L11 Ø 4.5 mm L 11.5 mm  
 DRIS-450L13 Ø 4.5 mm L 13 mm

### CARBON COATED

PD200L6SC Ø 2 mm L 6 mm  
 PD200L8SC Ø 2 mm L 8 mm  
 PD200L10SC Ø 2 mm L 10 mm  
 PD200L11.5SC Ø 2 mm L 11.5 mm  
 PD200L13SC Ø 2 mm L 13 mm  
 TD250L6SC Ø 2.5 mm L 6 mm  
 TD250L8SC Ø 2.5 mm L 8 mm  
 TD250L10SC Ø 2.5 mm L 10 mm  
 TD250L11.5SC Ø 2.5 mm L 11.5 mm  
 TD250L13SC Ø 2.5 mm L 13 mm  
 TD280L6SC Ø 2.8 mm L 6 mm  
 TD280L8SC Ø 2.8 mm L 8 mm  
 TD280L10SC Ø 2.8 mm L 10 mm  
 TD280L11.5SC Ø 2.8 mm L 11.5 mm  
 TD280L13SC Ø 2.8 mm L 13 mm  
 TD320L6SC Ø 3.2 mm L 6 mm  
 TD320L8SC Ø 3.2 mm L 8 mm  
 TD320L10SC Ø 3.2 mm L 10 mm  
 TD320L11.5SC Ø 3.2 mm L 11.5 mm  
 TD320L13SC Ø 3.2 mm L 13 mm  
 TD380L6SC Ø 3.8 mm L 6 mm  
 TD380L8SC Ø 3.8 mm L 8 mm  
 TD380L10SC Ø 3.8 mm L 10 mm  
 TD380L11.5SC Ø 3.8 mm L 11.5 mm  
 TD380L13SC Ø 3.8 mm L 13 mm  
 TD450L6SC Ø 4.5 mm L 6 mm  
 TD450L8SC Ø 4.5 mm L 8 mm  
 TD450L10SC Ø 4.5 mm L 10 mm  
 TD450L11.5SC Ø 4.5 mm L 11.5 mm  
 TD450L13SC Ø 4.5 mm L 13 mm

## TWIST DRILLS: LONG & SHORT EXTERNAL IRRIGATION



### LONG STAINLESS STEEL

DRT25-300425 Ø 2.5 mm L 16 mm  
 DRT28-300428 Ø 2.8 mm L 16 mm  
 DRT32-300432 Ø 3.2 mm L 16 mm  
 DRT38-300438 Ø 3.8 mm L 16 mm  
 DRT45-300445 Ø 4.5 mm L 16 mm  
 DRT50-300450 Ø 5 mm L 16 mm  
 DRT55-300455 Ø 5.5 mm L 16 mm

### SHORT STAINLESS STEEL

DRTS25-400025 Ø 2.5 mm L 11.5 mm  
 DRTS28-400028 Ø 2.8 mm L 11.5 mm  
 DRTS32-400032 Ø 3.2 mm L 11.5 mm  
 DRTS38-400038 Ø 3.8 mm L 11.5 mm  
 DRTS45-400045 Ø 4.5 mm L 11.5 mm  
 DRTS50-400050 Ø 5 mm L 11.5 mm  
 DRTS55-400055 Ø 5.5 mm L 11.5 mm

### LONG CARBON COATED

TD250L16C Ø 2.5 mm L 16 mm  
 TD280L16C Ø 2.8 mm L 16 mm  
 TD320L16C Ø 3.2 mm L 16 mm  
 TD380L16C Ø 3.8 mm L 16 mm  
 TD450L16C Ø 4.5 mm L 16 mm  
 TD500L16C Ø 5 mm L 16 mm

\* Transitioning to Carbon Coated Drills through 2021  
 NOT All Kits or Replacements will include CC Drills



## SURGICAL INSTRUMENTS



SHORT HAND & RACHET  
INSERTION KEY  
LENGTH 26 mm  
THKS-20029



LONG HAND & RACHET  
INSERTION KEY  
LENGTH 29 mm  
THKL-200300



SHORT MOTOR  
INSERTION INSTRUMENT  
LENGTH 23 mm  
TMAS-200250



LONG MOTOR  
INSERTION INSTRUMENT  
LENGTH 26.5 mm  
TMAL-200260



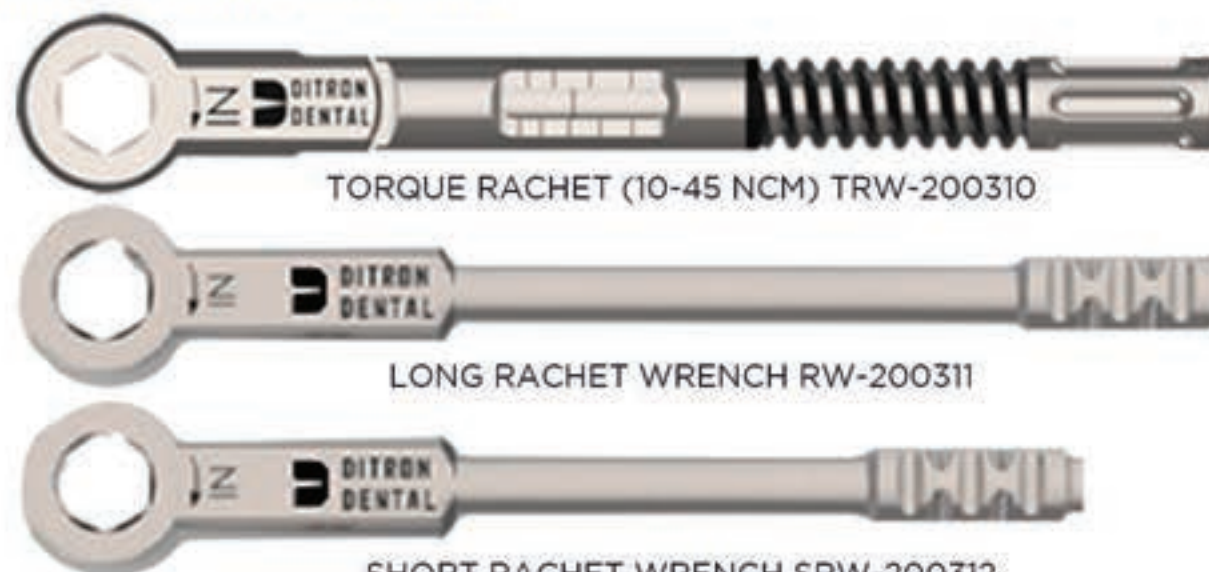
OPI SHORT HAND &  
RACHET KEY  
LENGTH 21 mm  
TSQK-200340

2.45 mm INTERNAL HEX CONNECTION FOR IMPLANTS &  
1.25 mm CONICAL HEX CONNECTION FOR COVER SCREWS/HEALING ABUTMENTS



DEPTH PROBE TDP-200320

PARALLEL PIN  
Ø 2-3 mm  
TPP-200330



TORQUE RACHET (10-45 NCM) TRW-200310

LONG RACHET WRENCH RW-200311

SHORT RACHET WRENCH SRW-200312

## PROSTHETIC INSTRUMENTS



SHORT HAND & RACHET  
ABUTMENT KEY  
1.25 mm HEX  
TRAS-200230



LONG HAND & RACHET  
ABUTMENT KEY  
1.25 mm HEX  
TRAL-200240



SHORT MOTOR ADAPTER  
1.25 mm HEX  
LENGTH 22 mm  
TMAS-200270



LONG MOTOR ADAPTER  
1.25 mm HEX  
LENGTH 30 mm  
TMAL-200280



MULTI-UNIT ABUTMENT  
HAND & RACHET KEY  
TMUA-200350



SHORT HAND KEY  
1.25 mm HEX  
LENGTH 22 mm  
THSS-200210



LONG HAND KEY  
1.25 mm HEX  
LENGTH 28 mm  
THSL-200220



TORQUE RACHET (10-45 NCM) TRW-200310



LONG RACHET WRENCH RW-200311



SHORT RACHET WRENCH SRW-200312



# *CUSTOMER EXPERIENCE*





# PACKAGING...



The dental implants are packaged in an ISO “Class 7” Clean Room in rectangular boxes allowing for convenient storage.

The color-coded seal on the top of each box allows for quick identification of the dental implant diameter and length.

The back label on the box includes the Implant Type, Catalog Number, Diameter & Length, Batch Code, Manufacture Date, Expiration Date and CE Mark. Each dental implant and cover screw are supplied in a sealed vial inside the rectangular box.

Sterilized Using Irradiation  
Batch Code  
Manufacture Date  
Ditrón Dental Products with the CE Mark fulfill the Requirements of the Medical Device Directive 93/42/EEC



MPI implant.....Implant Type  
REF 11420.....SKU/Catalog Number  
Ø 4.20 L 11.5.....Implant Diameter & Length  
STERILE R  
LOT 827/587 ②  
2013-06 2018-06.....Expiration Date  
Do not use if packaging is damaged.....Do Not Use if Sterile Package is Compromised  
CE Mark 0470



IMPLANT  
COLOR  
CODING



# CUSTOMER SUPPORT...

## WELCOME TO OUR WORLD OF PRECISION

Ditron Dental USA is a “doctor driven” company with guidance provided by our unparalleled group of advisory board members. We offer customer-centered service and support through our experienced team of sales professionals, customer service concierges and a website for dental professionals including our online store. We offer a broad range of educational and training events including our Clinical Champion mentoring program.

### CUSTOMER SERVICE

Our customer service concierges are ready to help you Monday through Friday from 8 AM to 5 PM PST. They can assist you with a variety of services from answering product questions, taking your order or assist you with registering and navigating the online store.

You can reach our customer service concierges two ways:

- **844.4DI.TRON (434.8766)**
- **info@ditrondentalusa.com**

We look forward to assisting you and welcoming you to our Ditron Dental USA family.

### RETURN POLICY & COMPREHENSIVE LIFETIME WARRANTY

Ditron Dental USA provides the Buyer, listed on the Order Form, with a 30-day product exchange on any unmarked and unopened items. Proof of purchase is required and the item must be returned in the original packaging. Return-Exchanges are subject to a 20% restocking fee.

Ditron Dental USA provides a lifetime warranty for all its dental implants and prosthetic components when used in accordance with the supplied Instructions for Use (IFU) and the company’s protocols.

For more detailed information regarding these policies, visit the online store or ask your sales professional or customer service concierge for a copy.

### ONLINE STORE

All Ditron Dental USA dental implants, prosthetic components, surgical kits, drills and instruments can be ordered online 24 hours a day, 7 days a week. Products are organized by category with filters to help you quickly locate the product(s) you require. There is a search tool if you aren’t search where to look. Easily add the products to your shopping cart including the quantities of each and check out. We provide 2-day standard shipping unless you need something next day for which there is an up-charge.

All orders are archived for easy lookup, review and printing while you are visiting the online store.

Not ready to place an order yet? Register online and one of our sales professionals and/or customer service concierges will contact you within 24 hours.

Visit: <https://order.ditrondentalusa.com/>

### TRAINING & EDUCATION

We offer a variety of informational online webinars together with virtual and live hands-on courses.

Our Clinical Champions are located throughout the US and are ready to mentor you with product information, case planning and other clinical questions.

Visit: <https://ditrondentalusa.com/>

**844.4DI.TRON (434.8766)**



DITRON DENTAL USA  
 555 Corporate Drive, Suite 160  
 Ladera Ranch, CA 92694  
 P: 844.4DI.TRON (434.8766)  
 E: [info@ditrondentalusa.com](mailto:info@ditrondentalusa.com)  
 Online Store: [www.order.ditrondentalusa.com/login](http://www.order.ditrondentalusa.com/login)  
 W: [www.ditrondentalusa.com](http://www.ditrondentalusa.com)



DITRON DENTAL  
 Division of Ditron Precision Ltd.  
 2 Haofe St. South Ind. Zone  
 POB 5010 Ashkelon 78150 Israel  
 P: 972.8.6711884  
 E: [info@ditrondental.com](mailto:info@ditrondental.com)  
 W: [www.ditrondental.com](http://www.ditrondental.com)



D I T R O N   D E N T A L  
 U S A

Ditron Dental is certified under EN ISO 9001:2008, SN EN ISO 13485:2012 MDD 93/42/EEC Annex II and is authorized to use the CE mark on all Ditron Dental products. All products are 510 (k) cleared by the FDA. All rights are reserved. Warning: Only a licensed dentist should use these products.

© DITRON DENTAL USA 2021  
 Rev. B 210801