

ZAHNER®

The Peterson Automotive Museum

Location: Los Angeles, California

Design: Kohn Pedersen Fox (KPF)

Surface: Angel Hair® Stainless Steel



Explore the extraordinary impact a Zahner Surface can bring to your project

From copper and steel to aluminum, stainless steel, and zinc, we bring more than 120 years of experience to helping you find the materials and treatments that enhance the impact of your project.

At Zahner, we blend the disciplines of architecture, engineering, metallurgy and fabrication. Our research and new product development teams work with every alloy of metal to apply classic patinations, as well as custom, collaborative palettes of new colors and finishes.

Let us help you make your designs more feasible and achievable with our unrivaled expertise and stakeholder collaboration process that ensures innovation, quality and beauty.

Zahner Surfaces

Discover the exclusive Zahner finishes developed through years of experience and extensive Research & Development – available in sheet form or as part of a fabricated project. Connect with a Zahner Surfaces Specialist to discuss your project.



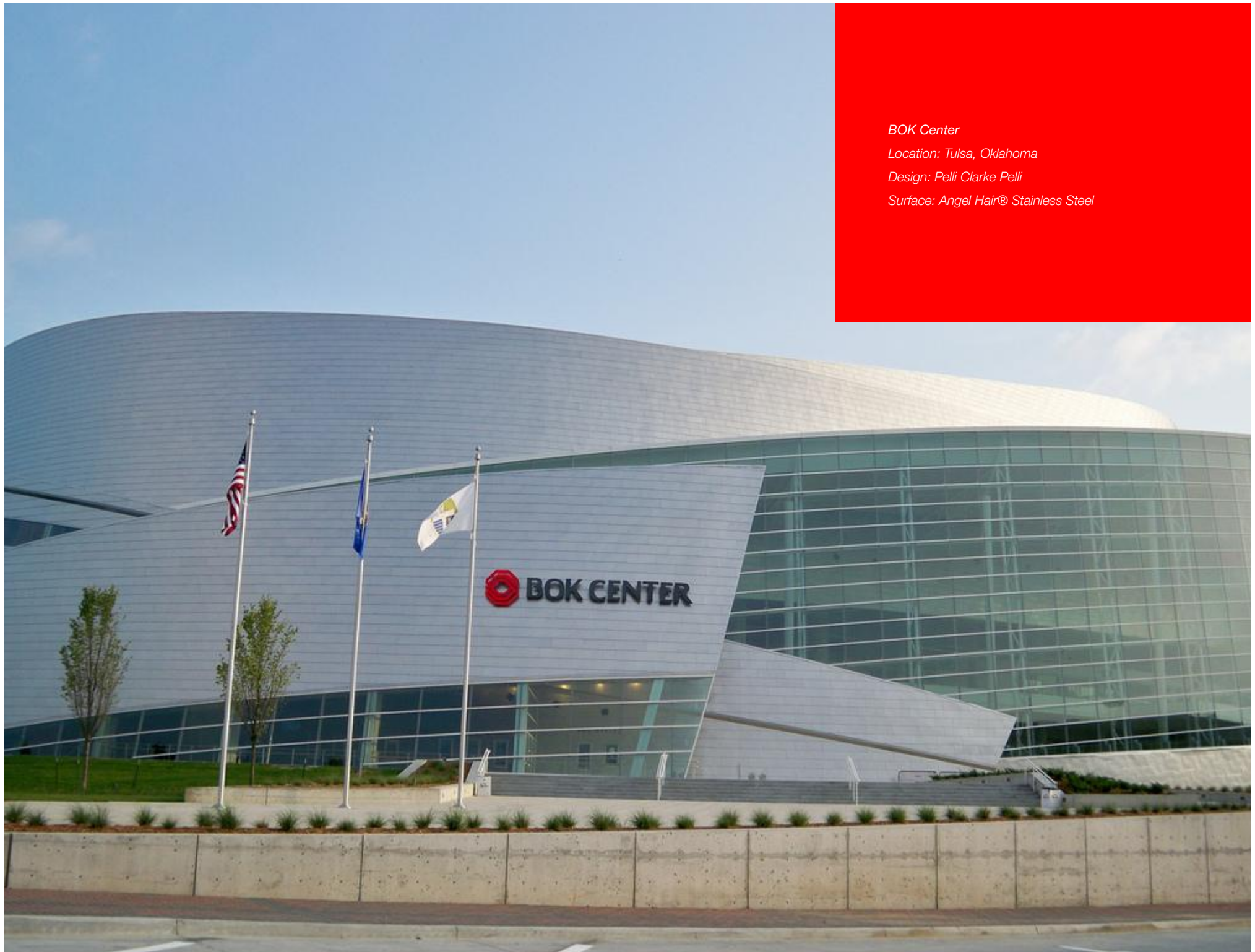
Top: AECOM Headquarters
Cleveland, Ohio
Dirty Penny™ Copper

Middle Left: Dome on the Plaza
Kansas City, Missouri
Roano™ Zinc

Middle Right: Gulch Crossing
Nashville, Tennessee
Solanum™ Weathering Steel

Bottom: Columbus Museum of Art
Columbus, Ohio
Star Blue™ Patinated Copper





BOK Center

Location: Tulsa, Oklahoma

Design: Pelli Clarke Pelli

Surface: Angel Hair® Stainless Steel

Collaborative Surfaces

Collaborate with us to develop the custom patina that will be as unique as the project you are creating. Contact one of our surface specialists and let's start a conversation about what you hope to achieve.



Top: *Ohio Holocaust Memorial*

Columbus, Ohio

Custom Bronze Patina

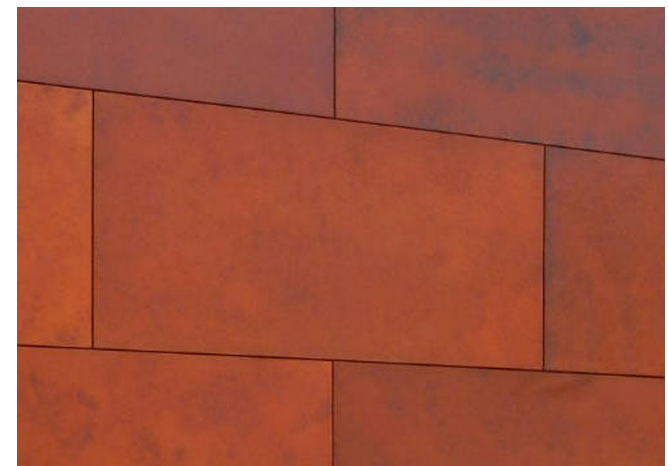
Middle: *September 11 Museum*

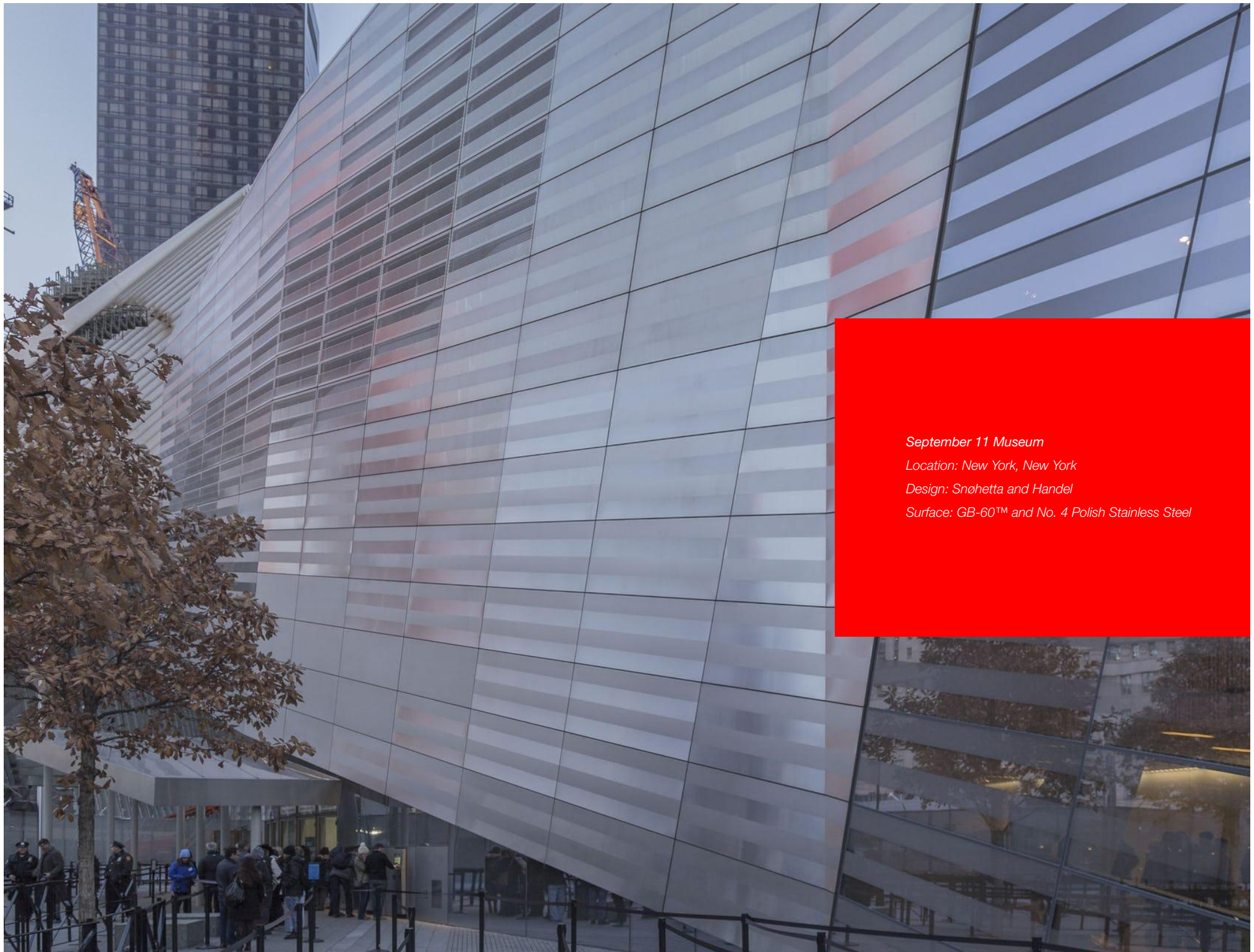
New York, New York

GB-60™ & No. 4 Polish Stainless Steel

Bottom Left: *Blackened Steel*

Bottom Right: *Daeyang Gallery Custom Copper Patina*





September 11 Museum

Location: New York, New York

Design: Snøhetta and Handel

Surface: GB-60™ and No. 4 Polish Stainless Steel

Angel Hair® Stainless Steel is a Zahner custom metal finish developed to soften the high-reflectivity of standard grain finishes. Stainless steel is etched with a fine grain using precision milling equipment. Also available on a variety of metal alloys, this is the finest, smoothest, and most uniform light-diffusion metal surface available for architectural metal.

GB-60™ Stainless Steel is a Zahner custom diffused non-directional metal finish. Stainless steel is blasted with glass beads to create the effect. The GB-60 Stainless Steel surface scatters light for a more diffused look and lower reflectivity.

Solanum™ Weathering Steel is a Zahner pre-oxidized weathering steel. The surface is produced by accelerating the natural weathering process and stabilizing the result. Solanum Steel provides a range of resonant tones on an enduring surface.

Dirty Penny™ Copper is a Zahner pre-weathered copper patina. An iridescent surface, the oxidized layer is a protecting barrier which grows and evolves as it further oxidizes.

Roano™ Zinc is a Zahner pre-weathered zinc patina. A raw patinated product, it's designed to age like tanned leather or vintage wine. Colors slowly darken with time, turning to a rich umber.

Star Blue™ Copper is a pre-weathered surface patina on copper. The custom copper sheet provides a range of blue and green with the right variation of tone and texture.

Zahner

1400 East 9th Street

Kansas City, MO 64106

USA

info@azahner.com

+1 (816) 474-8882 *phone*

+1 (816) 474-7994 *fax*