

CUPACLAD® 201 series is identified by the use of stainless steel visible fasteners. **The contrast between natural slate and steel gives this cladding a unique modern appearance.**

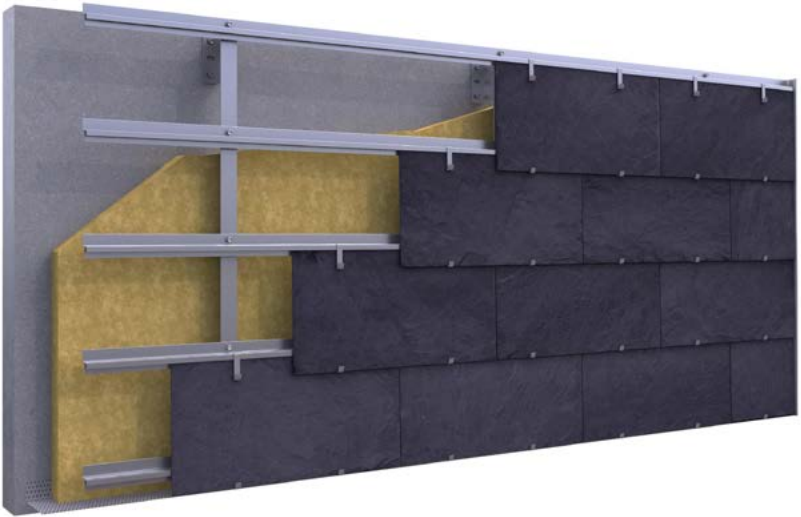
FASTENING
SYSTEM
201 Vanguard



CUPACLAD® 201 Vanguard stainless steel clips have been designed by our R&D department.

Every slate is fastened to the horizontal batten using two clips that remain partially visible once the system is installed.

CUPACLAD® 201 Vanguard
MODERN AND EFFICIENT



CUPACLAD® 201 Vanguard main feature is the combination of large pieces of slate and stainless steel clips; giving it the result of a clean, contemporary appeal.

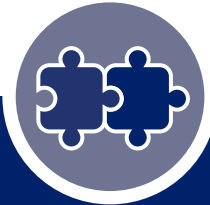
CUPACLAD® 201 Vanguard features 24"x 12" slate fitted horizontally with visible hook fasteners.

Slate size	24"x 12"
Nominal thickness	1/4"- 3/8"
Slates per ft²	0.64
Weight per ft² (slate)	≤ 4.10 lb/ ft²



PATENTED SYSTEM

CUPACLAD® 201 Vanguard is a patented system developed by our R&D department that is designed to meet the highest technical requirements of the construction industry.



EASE OF INSTALLATION

Our metal rails feature small holes in them to mark the exact position where the clips should be placed. This avoids the necessity of drawing vertical guidelines and individual fastening for the clips.



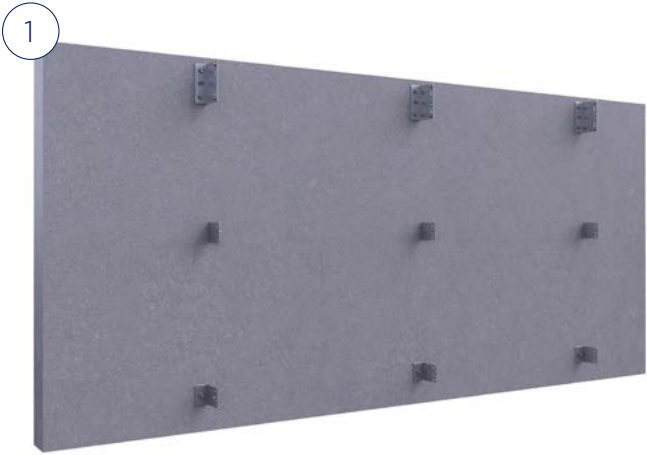
PERFECT RESULT

The stainless steel clips have flanges that work just like a spring absorbing differences in the thickness of the slates. The result is a perfectly leveled cladding surface.

CUPACLAD®

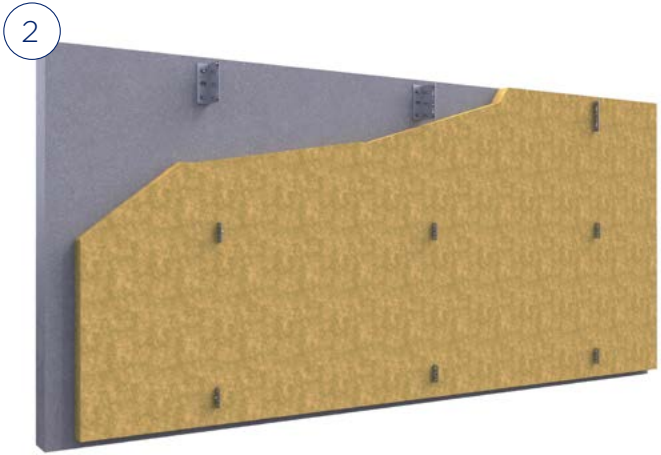
201 Vanguard

FASTENING METHOD



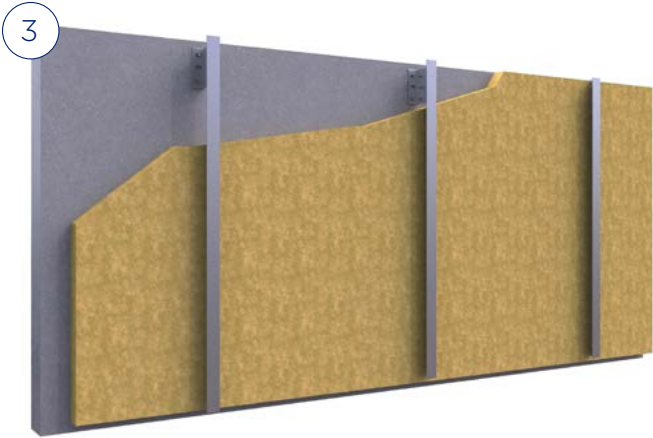
Fastening the metal brackets

The metal brackets are installed in alternate courses on each side of the vertical profile. It is required to use both fixed point metal brackets (on the upper end of each profile) and brackets with a sliding point to allow for the profile movement.



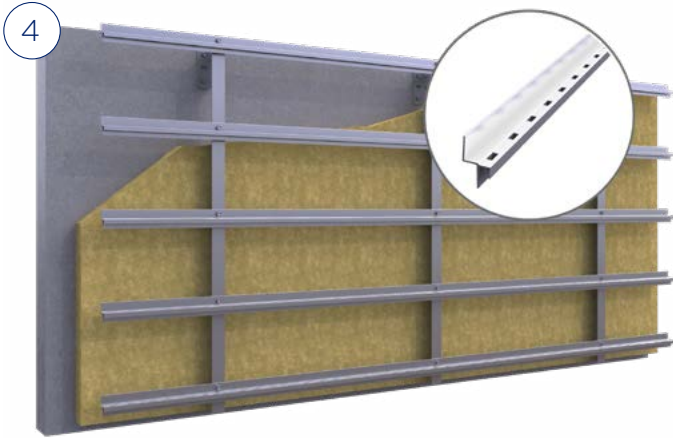
Installing of insulation

Choose the most suitable insulation material based on the project requirements. Installing in accordance with the manufacturers recommendations.



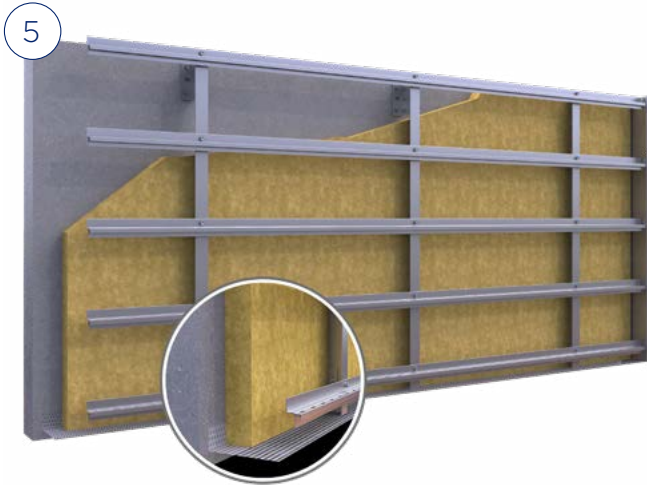
Fastening the "L" shaped vertical profiles

Fasten the vertical profiles to the metal brackets allowing at least 3/4" for an air cavity. The vertical profiles must be perfectly plumb before attaching the rest of the system components.



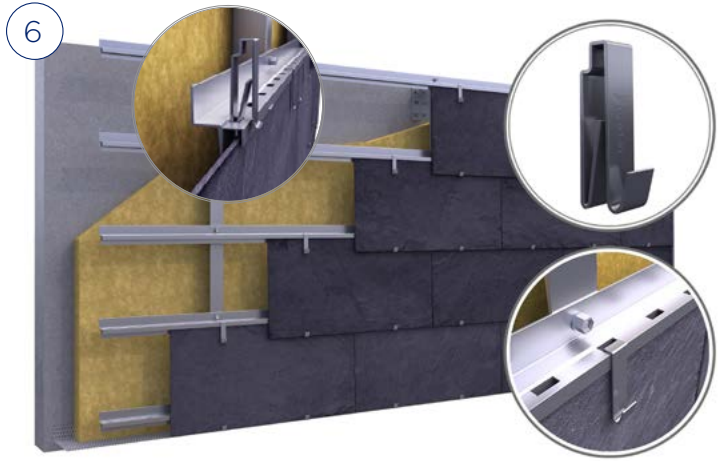
Fastening the CUPACLAD® 201 Vanguard horizontal battens

Install the horizontal battens with the vertical ones at each intersection. The gap between horizontal battens when fitting a 24 x 12 slate must be 10". The horizontal battens must be perfectly level as their position will dictate the final position of the slates.



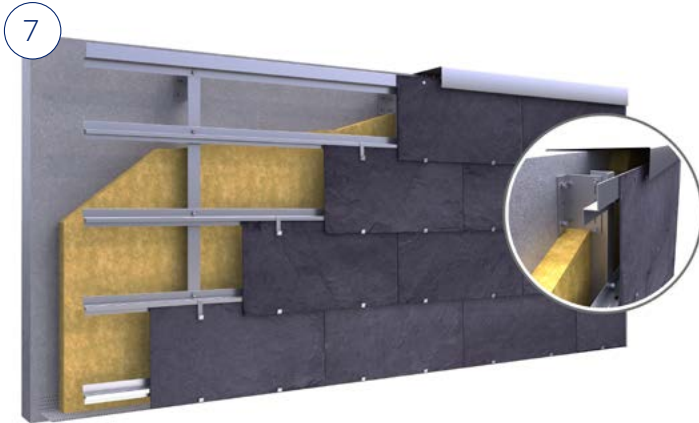
Installing the flashing

Fasten a ventilated flashing at the first course of the cladding and the metal flashings on "singular" points (edges, window frames, etc).



Installing the slate with the special CUPACLAD® 201 Vanguard clips

The clips are fitted to the holes in the horizontal battens. Each slate is supported by two clips on the lower edge while fitted with another two on the top.

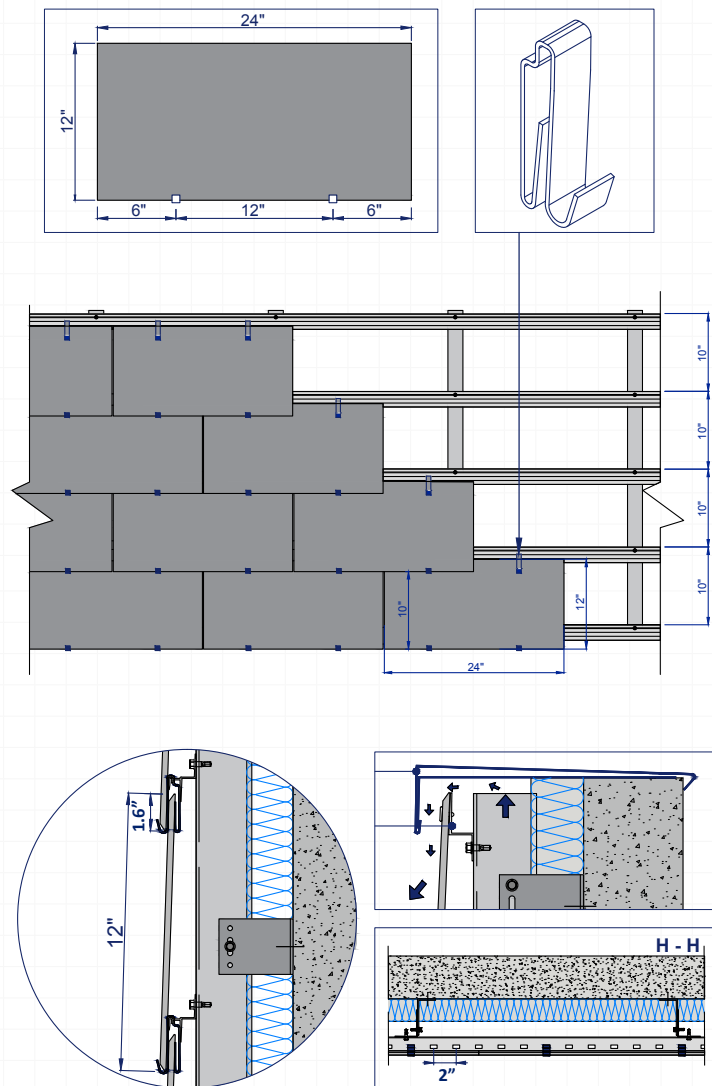


Installing the slate to the top of the cladding

At the top of the cladding when joining the gutters or flashing it is necessary to use the 201-V top profile to which the slate must be fitted with two self-drilling screws or rivets.



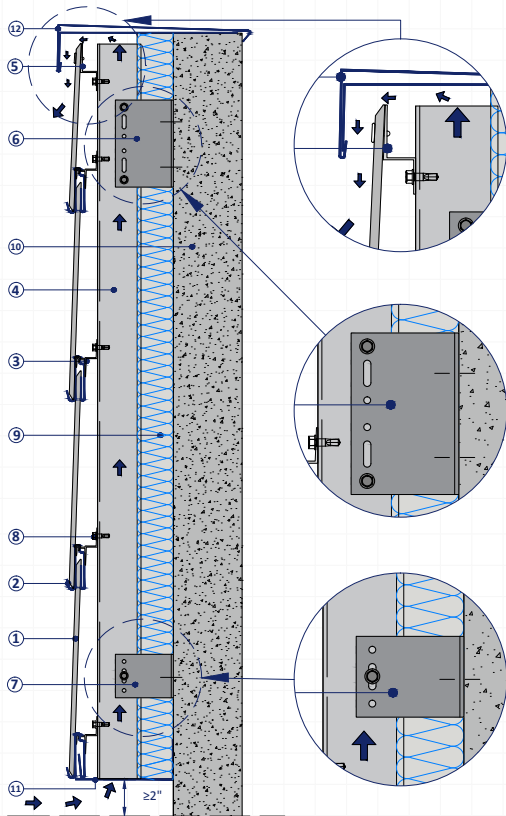
TECHNICAL DETAIL CUPACLAD® 201 Vanguard



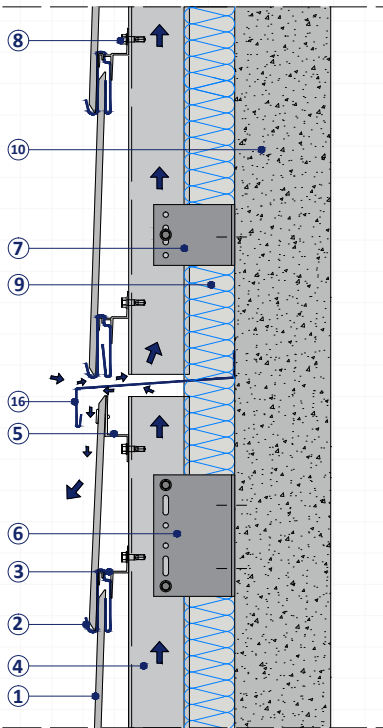
1. CUPA PIZARRAS natural slate
2. CUPACLAD® 201-V Clip
3. Horizontal CUPACLAD® 201-V batten
4. L shaped 50X60 vertical profile
5. CUPACLAD® 201-V top profile
6. Metal bracket, "fixed point"
7. Metal bracket "sliding point"
8. Self-drilling stainless steel screws
9. Insulation
10. Load bearing wall
11. Ventilated profile
12. Top metal flashing
13. Sill metal flashing
14. Metal lintel flashing
15. Metal jambs flashing
16. Metal flashing

CONSTRUCTION DETAILS
CUPACLAD® 201 Vanguard

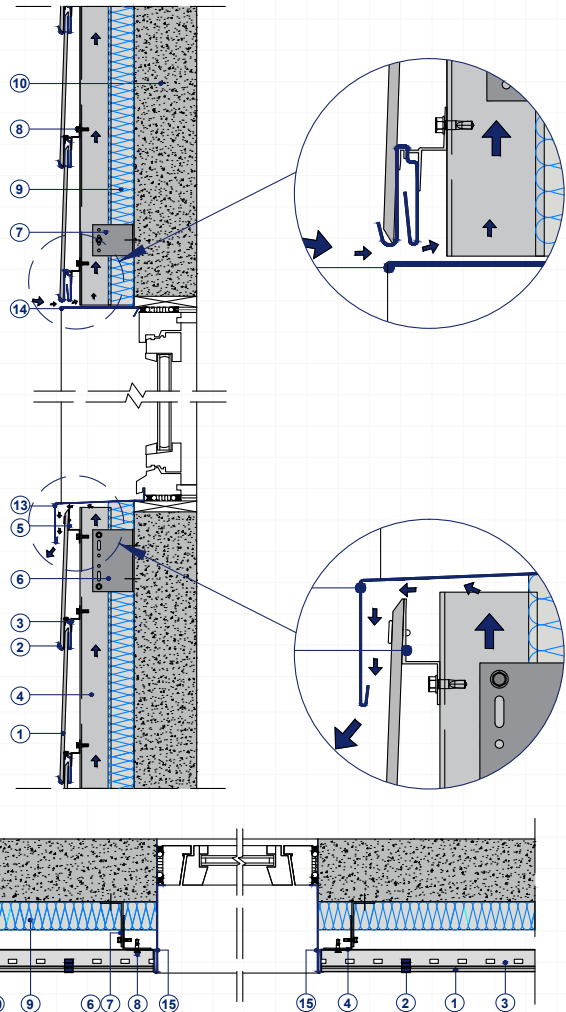
VENTILATED PROFILE AND TOP FLASHING



AIR CAVITY

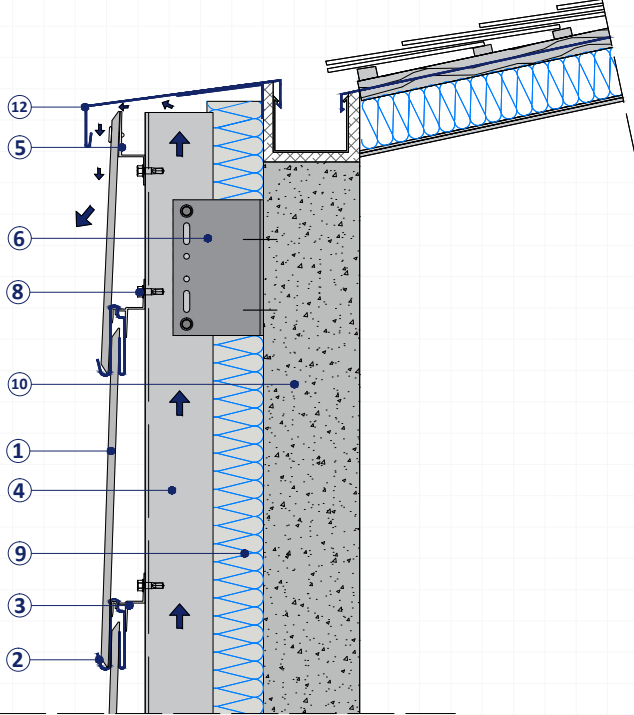


EXTERNAL
WINDOW REVEAL

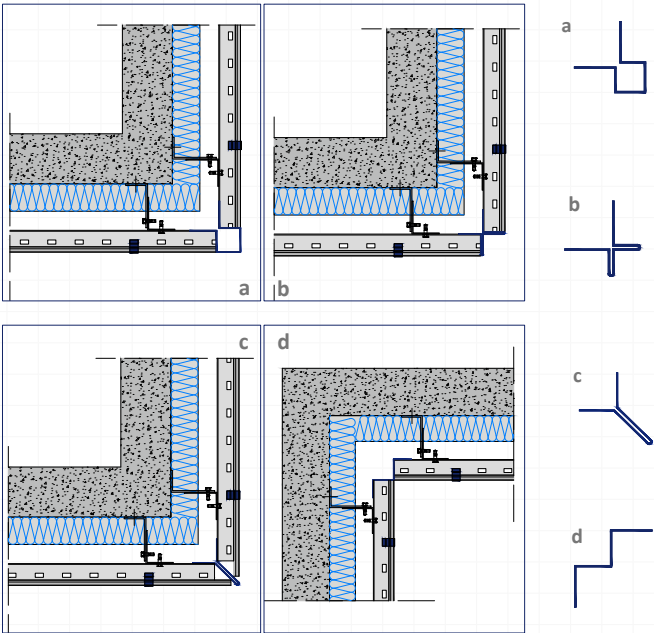


1. CUPA PIZARRAS natural slate
2. CUPACLAD® 201-V Clip
3. Horizontal CUPACLAD® 201-V batten
4. L shaped 50X60 vertical profile
5. CUPACLAD® 201-V top profile
6. Metal bracket, "fixed point"
7. Metal bracket "sliding point"
8. Self-drilling stainless steel screws
9. Insulation
10. Load bearing wall
11. Ventilated profile
12. Top metal flashing
13. Sill metal flashing
14. Metal lintel flashing
15. Metal jambs flashing
16. Metal flashing

TOP FLASHING
FOR PITCHED ROOF



CORNER FLASHINGS



CUPACLAD®

201 Vanguard

