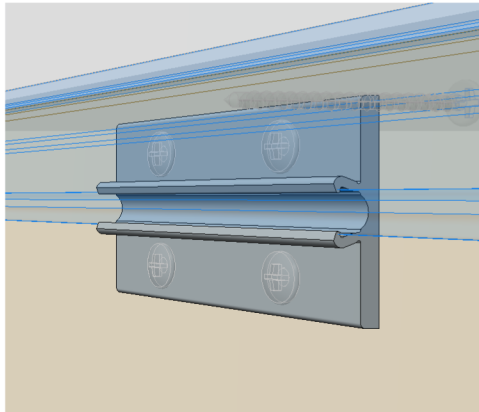
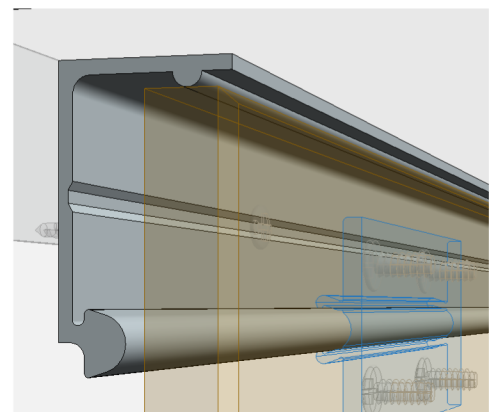



1 Section A  
12" = 1'-0"

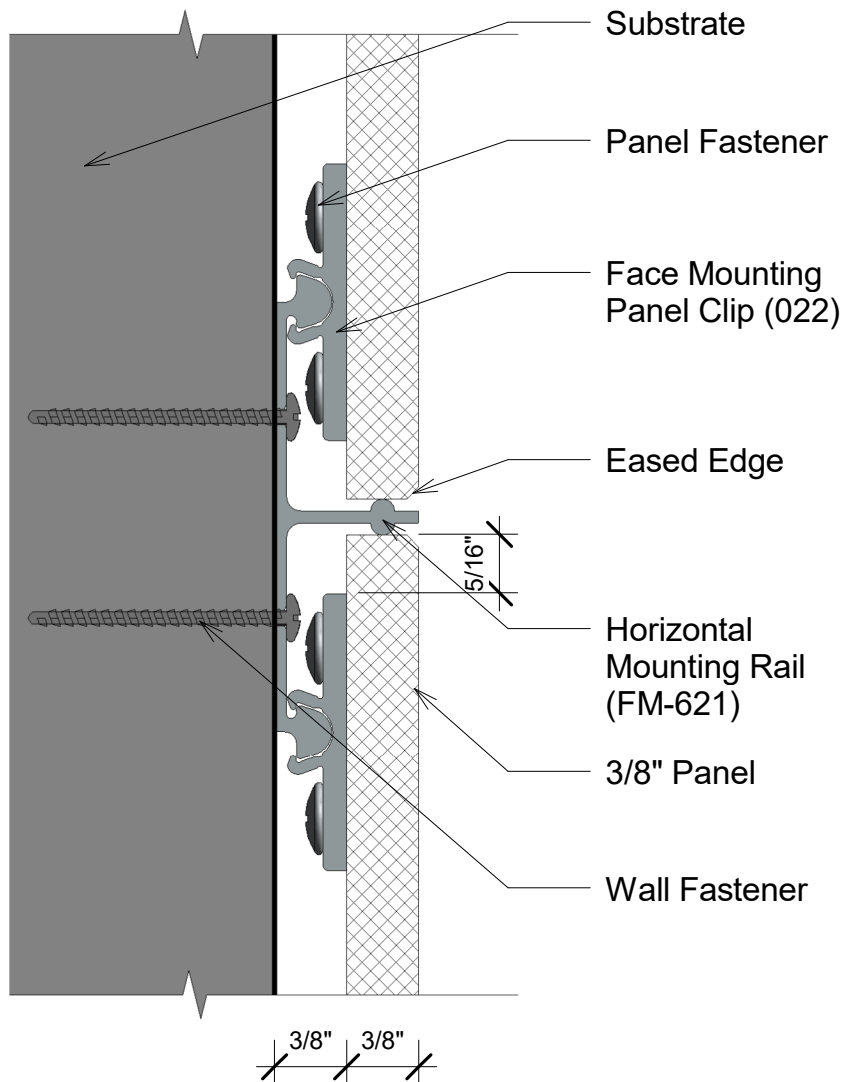


2 022 (A)  
Face Mounting Panel Clip

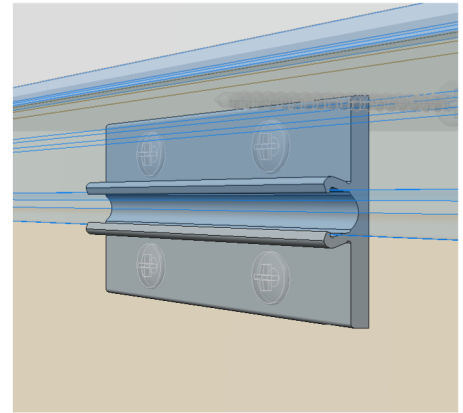


3 FM-602 (A)  
Edge Mounting Rail

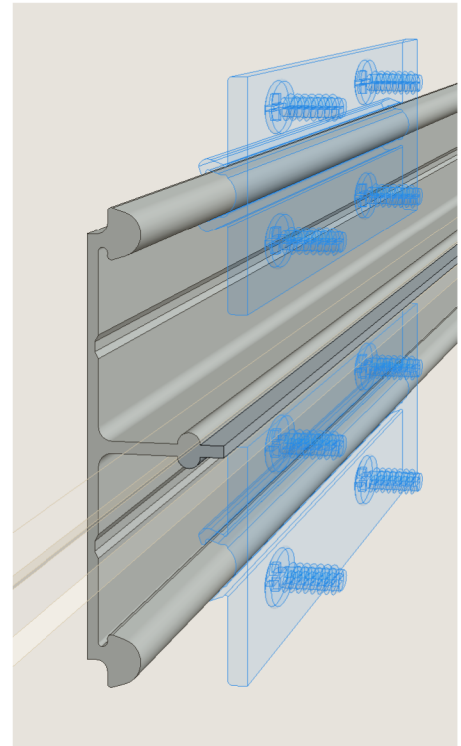
Title:		View:	Date:	 <b>Wall Panel Systems, Inc.</b> Tel: 877-333-4WPS support@wallpanelsystems.net Web: www.wallpanelsystems.net © 2016 Wall Panel Systems Inc.
Top Edge at Ceiling		Section	05/12/17	
Detail:	System Type:	Scale:	Draw By:	
A	3/8" Face Mounted Sys.	Full	WPS, Inc.	




1 Section B  
12" = 1'-0"

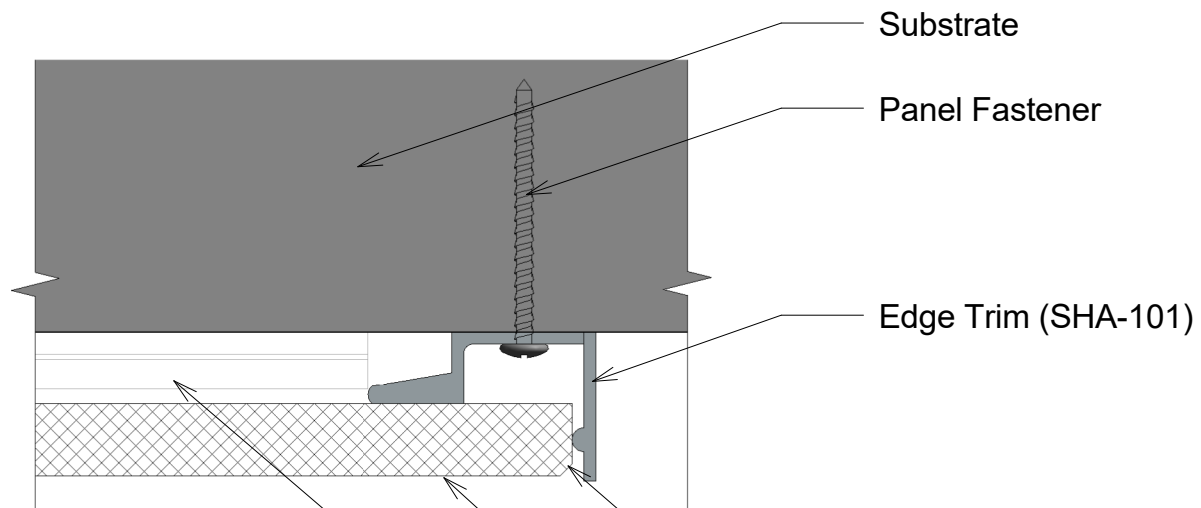


2 022 (B)  
Face Mounting Panel Clip

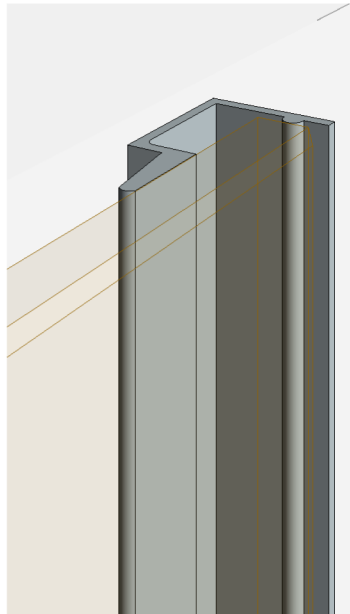


3 FM-621 (B)  
Horizontal Mounting Rail


Title:		View:	Date:	 <b>Wall Panel Systems, Inc.</b> Tel: 877-333-4WPS support@wallpanelsystems.net Web: www.wallpanelsystems.net © 2016 Wall Panel Systems Inc.
Horizontal Joint		Section	05/12/17	
Detail:	System Type:	Scale:	Draw By:	
B	3/8" Face Mounted Sys.	Full	WPS, Inc.	

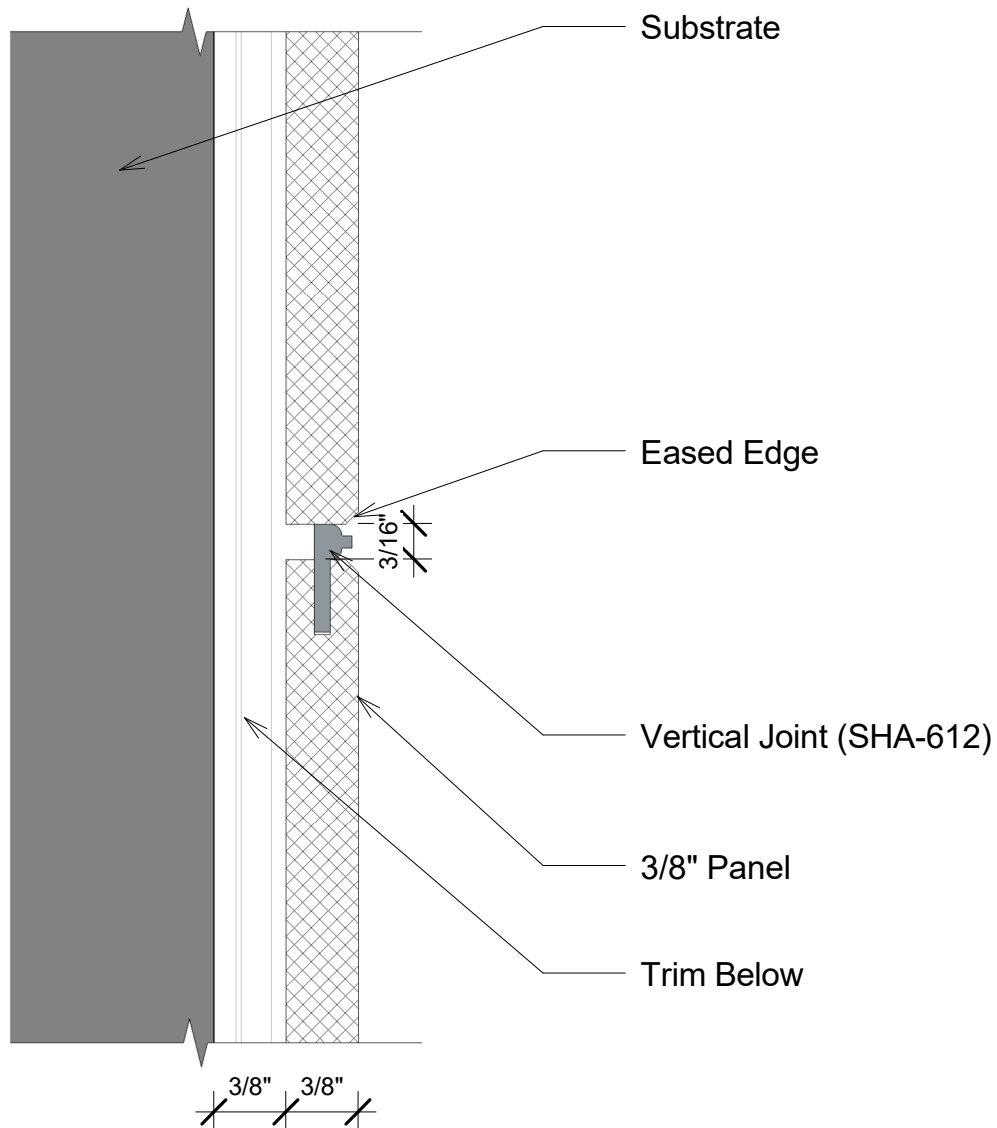


① Plan View - C  
12" = 1'-0"

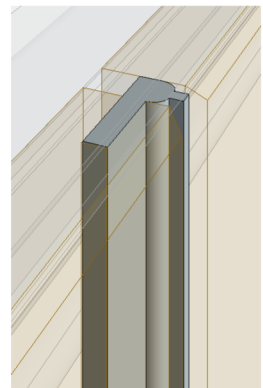


② SHA-101 (C)  
Edge Trim


Title: <b>Vertical Edge Detail</b>		View: <b>Plan</b>	Date: <b>05/12/17</b>	 <b>Wall Panel Systems, Inc.</b> Tel: 877-333-4WPS support@wallpanelsystems.net Web: www.wallpanelsystems.net © 2016 Wall Panel Systems Inc.
Detail: <b>C</b>	System Type: <b>3/8" Face Mounted Sys.</b>	Scale: <b>Full</b>	Draw By: <b>WPS, Inc.</b>	

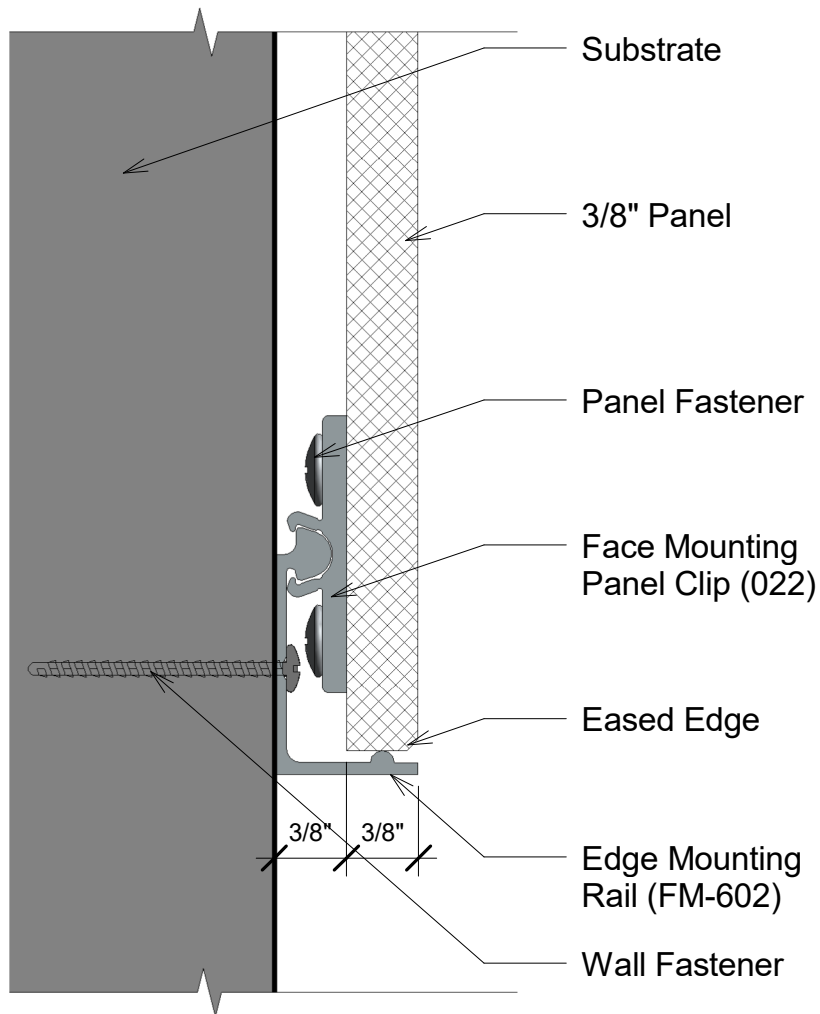


① Plan View - D  
12" = 1'-0"

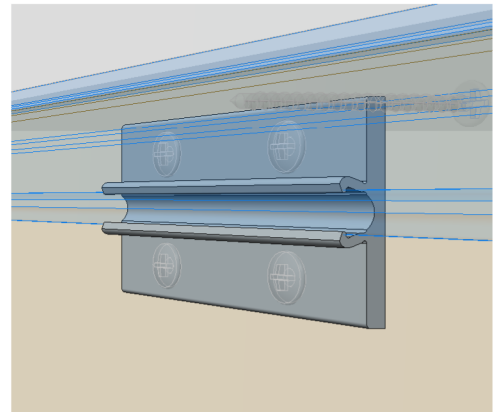


② SHA-612 (D)  
Vertical Joint

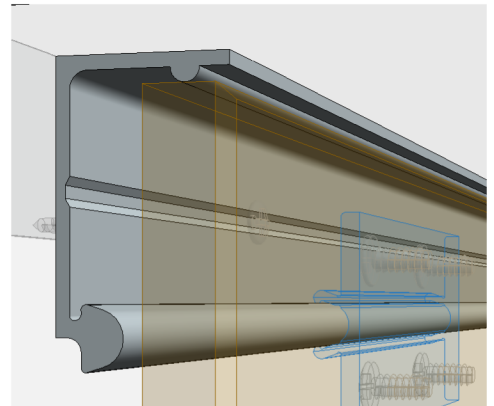
Title:		View:	Date:	 <b>Wall Panel Systems, Inc.</b> Tel: 877-333-4WPS support@wallpanelsystems.net Web: www.wallpanelsystems.net © 2016 Wall Panel Systems Inc.
Vertical Joint Detail		Plan	05/12/17	
Detail:	System Type:	Scale:	Draw By:	
D	3/8" Face Mounted Sys.	Full	WPS, Inc.	




1 Section E  
12" = 1'-0"

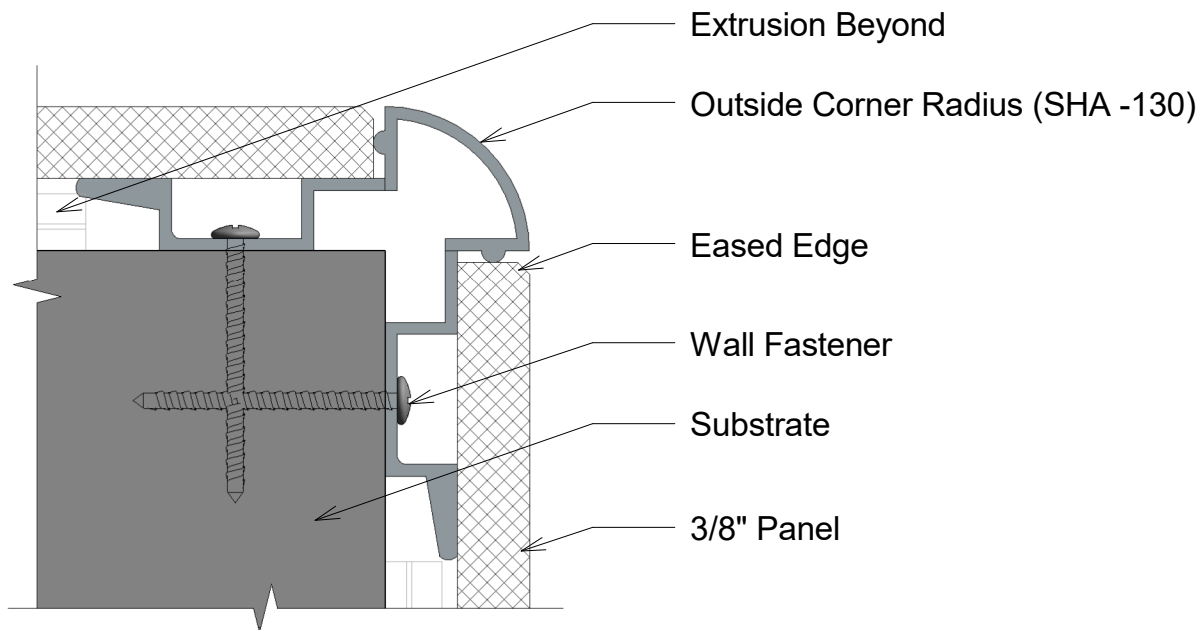


2 022 (E)  
Face Mounting Panel Clip

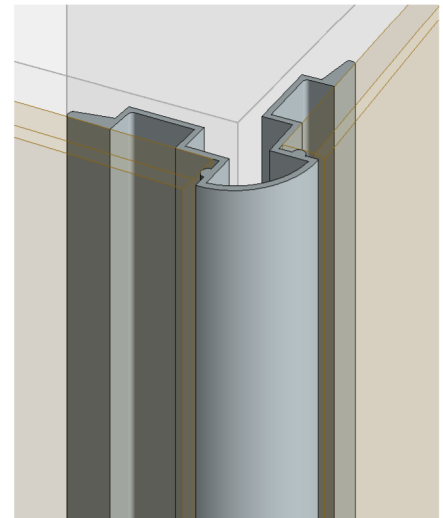


3 FM-602 (E)  
Edge Mounting Rail


Title: <b>Bottom Rail</b>		View: <b>Section</b>	Date: <b>05/12/17</b>	 <b>Wall Panel Systems, Inc.</b> Tel: 877-333-4WPS support@wallpanelsystems.net Web: www.wallpanelsystems.net © 2016 Wall Panel Systems Inc.
Detail: <b>E</b>	System Type: <b>3/8" Face Mounted Sys.</b>	Scale: <b>Full</b>	Draw By: <b>WPS, Inc.</b>	

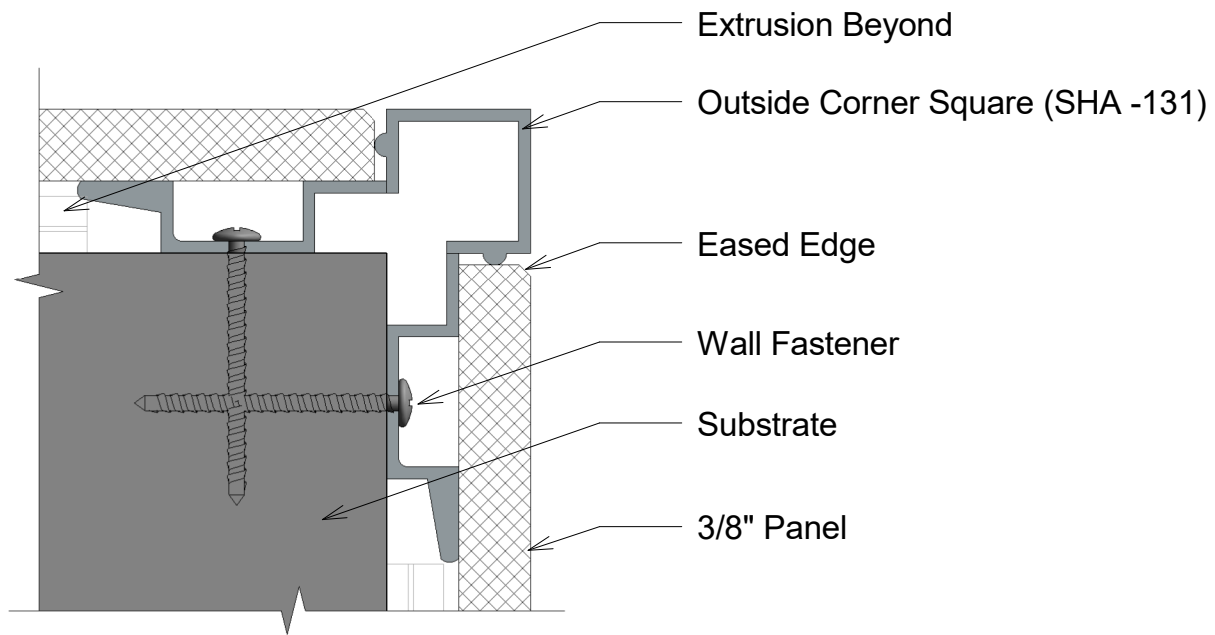


1 Plan View - F  
12" = 1'-0"

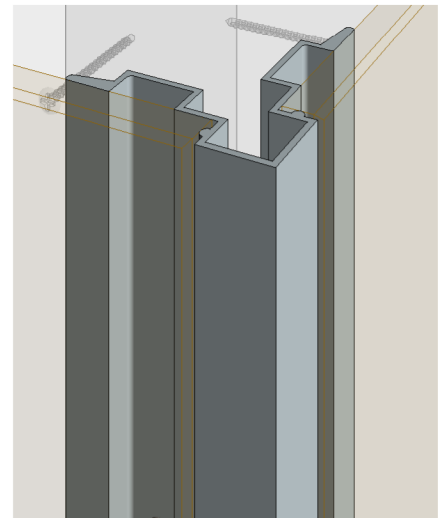


2 SHA-130 (F)  
Outside Corner Radius


Title: <b>Outside Corner Radius</b>		View: <b>Plan</b>	Date: <b>05/12/17</b>	 <b>Wall Panel Systems, Inc.</b> Tel: 877-333-4WPS support@wallpanelsystems.net Web: www.wallpanelsystems.net © 2016 Wall Panel Systems Inc.
Detail: <b>F</b>	System Type: <b>3/8" Face Mounted Sys.</b>	Scale: <b>Full</b>	Draw By: <b>WPS, Inc.</b>	



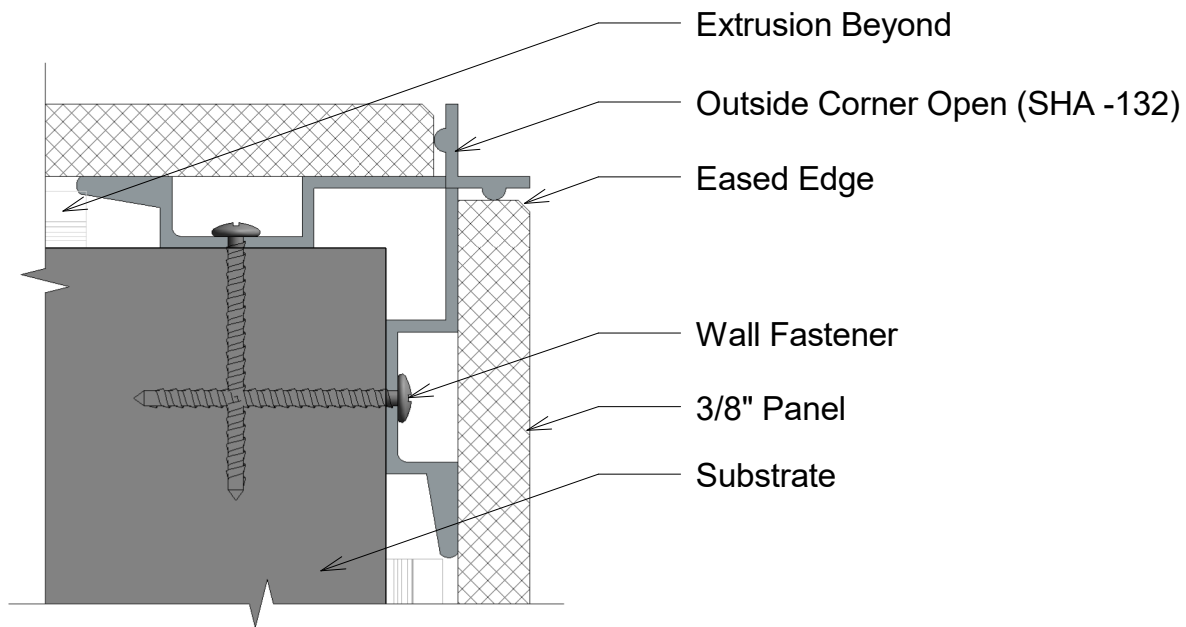
① Plan View - G  
12" = 1'-0"



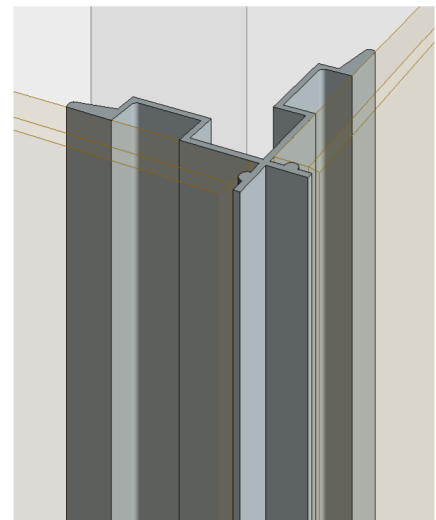
② SHA-131 (G)  
Outside Corner Square

Title: <b>Outside Corner Square</b>		View: <b>Plan</b>	Date: <b>05/12/17</b>	 <b>Wall Panel Systems, Inc.</b> Tel: 877-333-4WPS support@wallpanelsystems.net Web: www.wallpanelsystems.net © 2016 Wall Panel Systems Inc.
Detail: <b>G</b>	System Type: <b>3/8" Face Mounted Sys.</b>	Scale: <b>Full</b>	Draw By: <b>WPS, Inc.</b>	




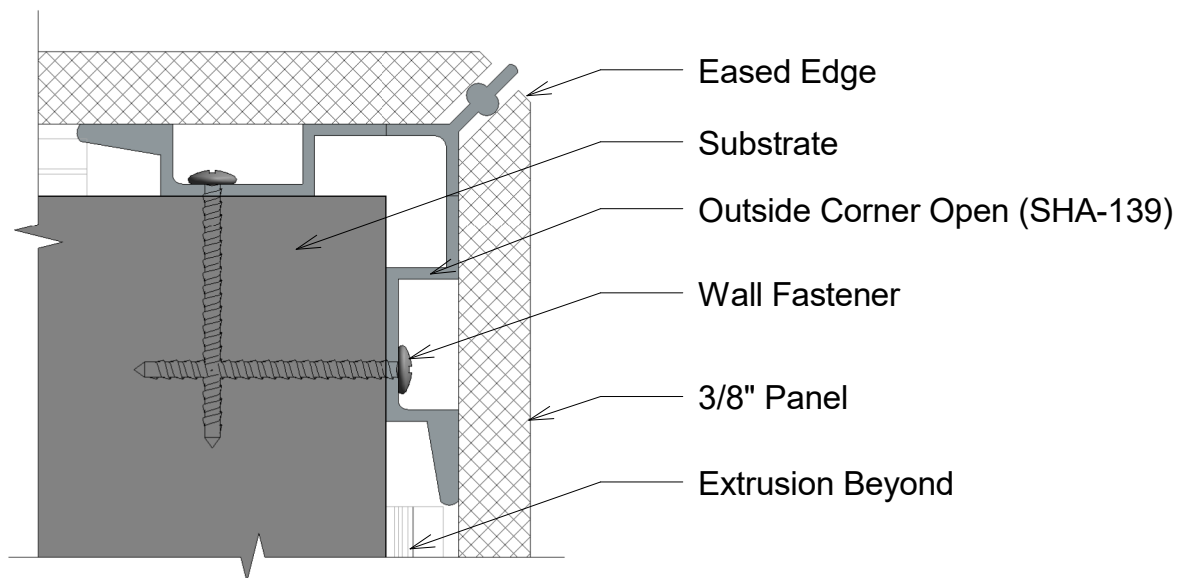


① Plan View - H  
12" = 1'-0"

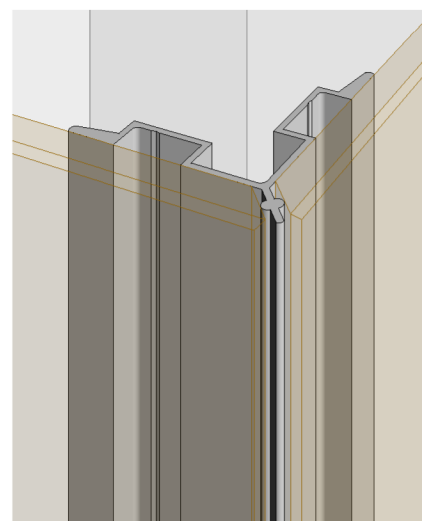


② SHA-132 (H)  
Outside Corner Open


Title: <b>Outside Corner Open</b>		View: <b>Plan</b>	Date: <b>05/12/17</b>	 <b>Wall Panel Systems, Inc.</b> Tel: 877-333-4WPS support@wallpanelsystems.net Web: www.wallpanelsystems.net © 2016 Wall Panel Systems Inc.
Detail: <b>H</b>	System Type: <b>3/8" Face Mounted Sys.</b>	Scale: <b>Full</b>	Draw By: <b>WPS, Inc.</b>	

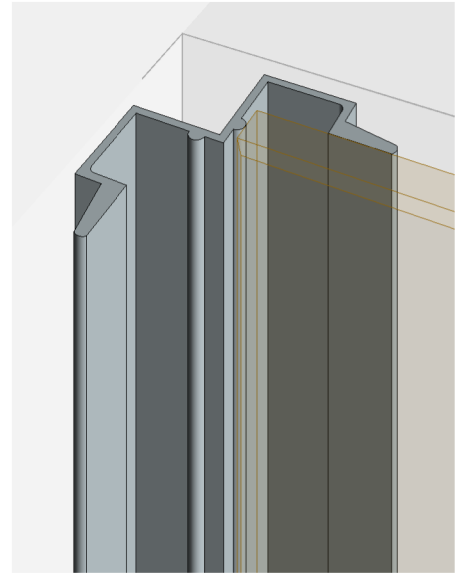
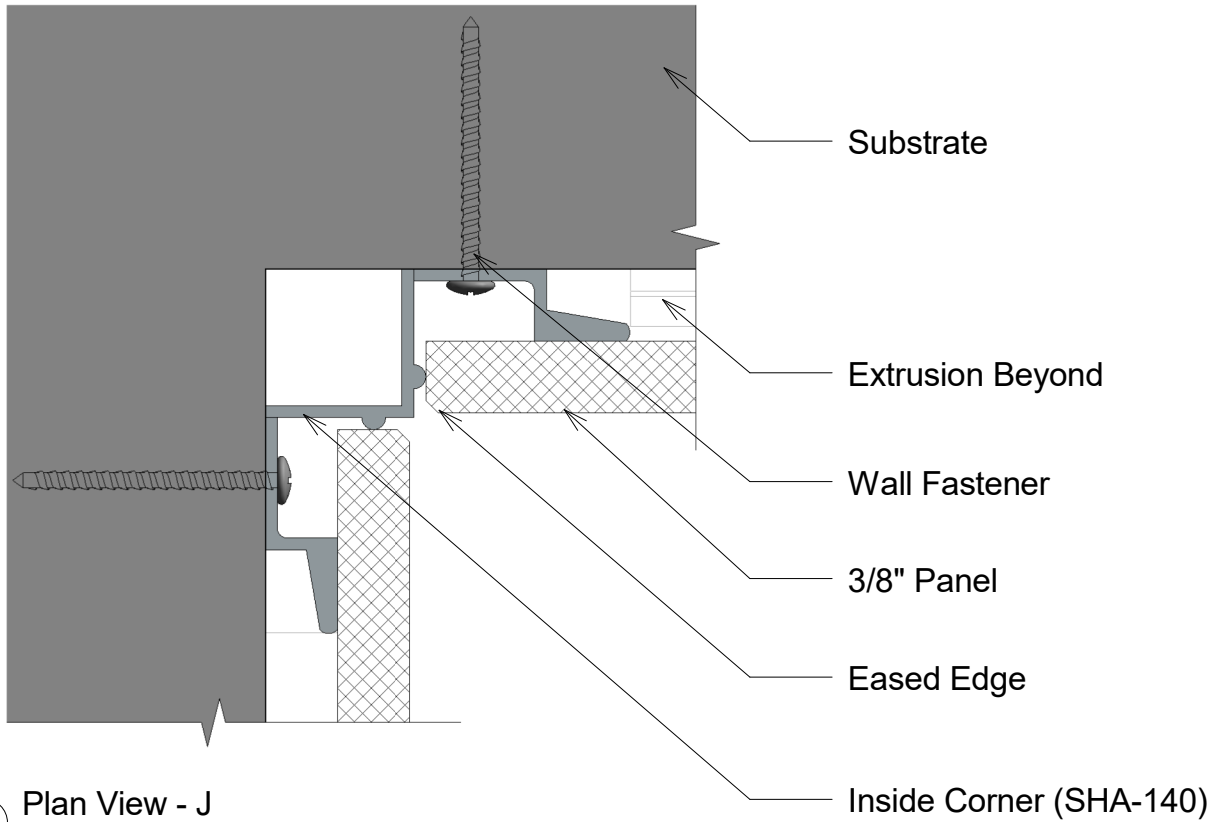


① Plan View - I  
12" = 1'-0"




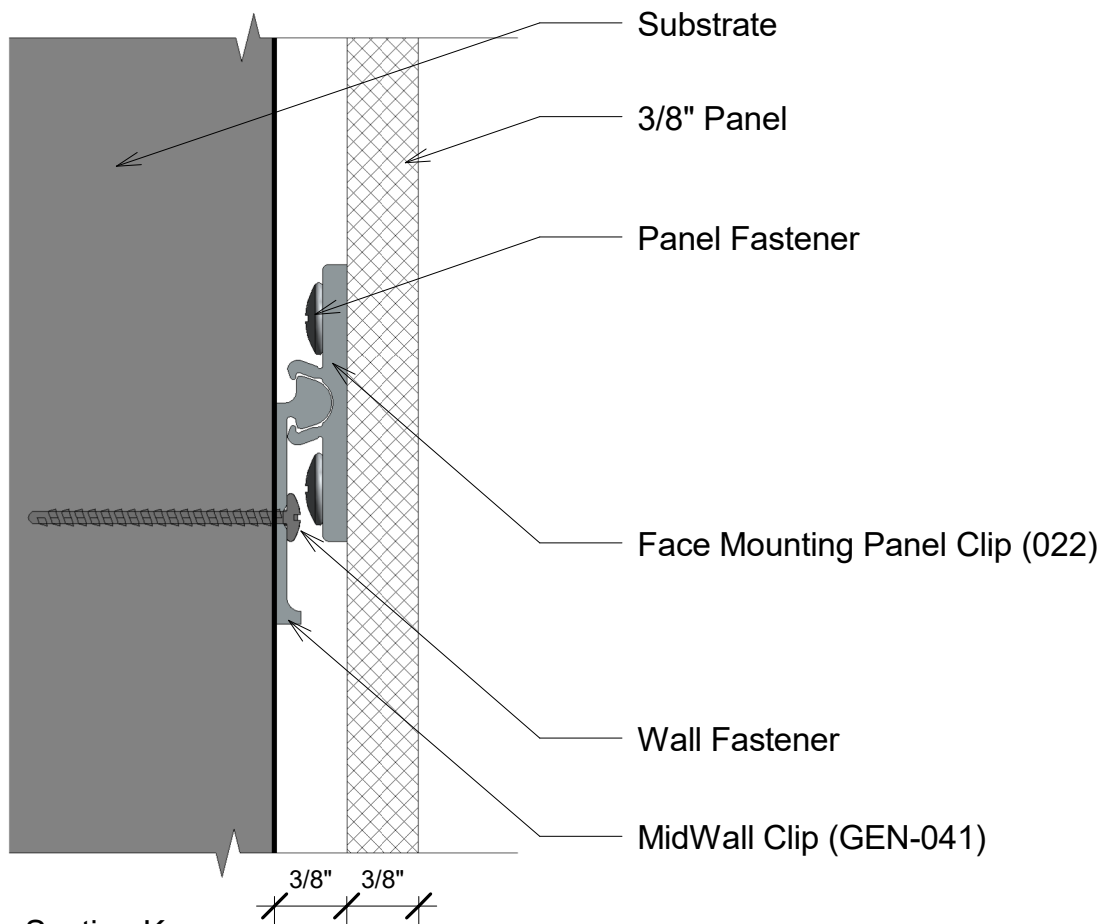
② SHA-139 (I)  
Mitered Outside Corner

Title: <b>Outside Corner Detail</b>		View: <b>Plan</b>	Date: <b>05/12/17</b>	 <b>Wall Panel Systems, Inc.</b> Tel: 877-333-4WPS support@wallpanelsystems.net Web: www.wallpanelsystems.net © 2016 Wall Panel Systems Inc.
Detail: <b>I</b>	System Type: <b>3/8" Face Mounted Sys.</b>	Scale: <b>Full</b>	Draw By: <b>WPS, Inc.</b>	

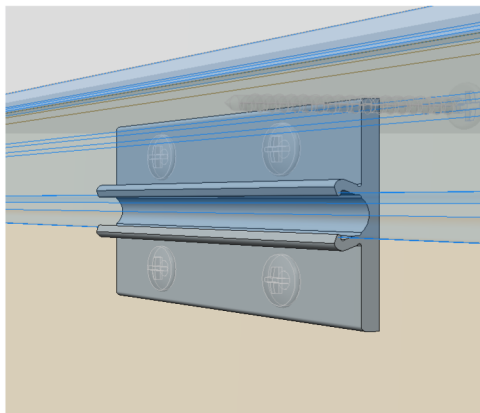


2 SHA-140 (J)  
Inside Corner

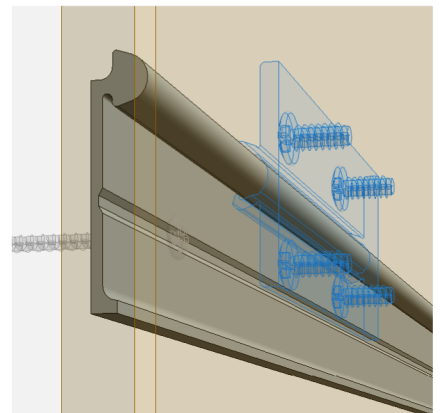
Title: <b>Inside Corner</b>		View: <b>Plan</b>	Date: <b>05/12/17</b>	 <b>Wall Panel Systems, Inc.</b> Tel: 877-333-4WPS support@wallpanelsystems.net Web: www.wallpanelsystems.net © 2016 Wall Panel Systems Inc.
Detail: <b>J</b>	System Type: <b>3/8" Face Mounted Sys.</b>	Scale: <b>Full</b>	Draw By: <b>WPS, Inc.</b>	




1 Section K  
12" = 1'-0"

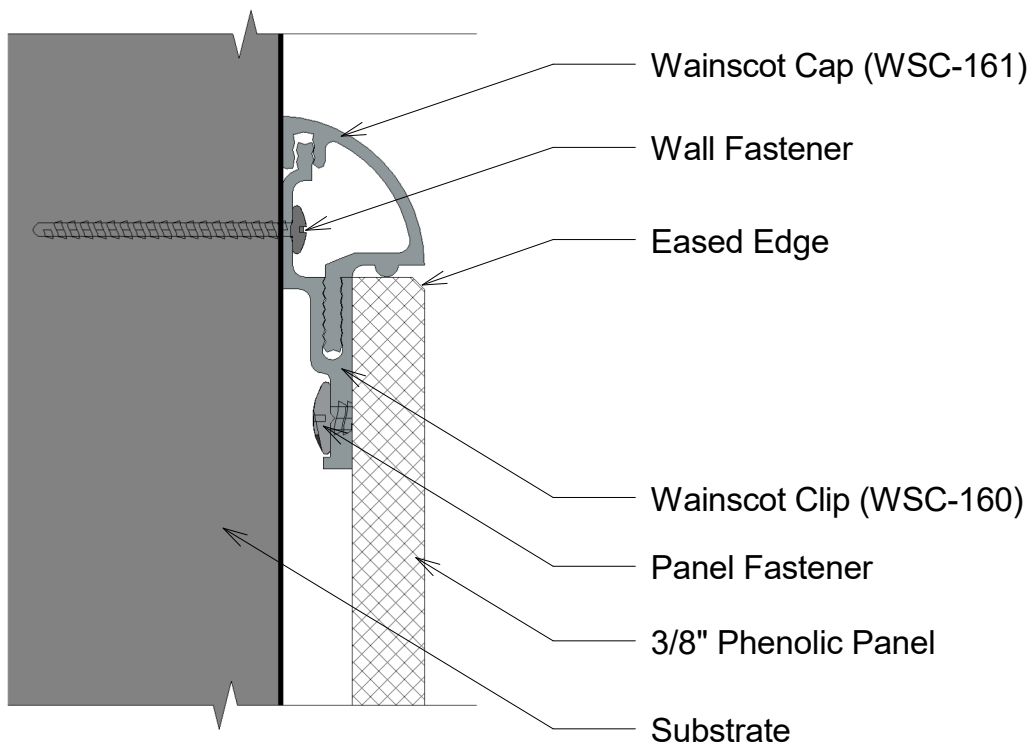


2 022 (K)  
Face Mounting Panel Clip

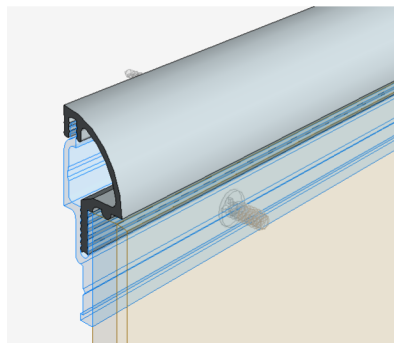


3 GEN-041 (K)  
MidWall Clip

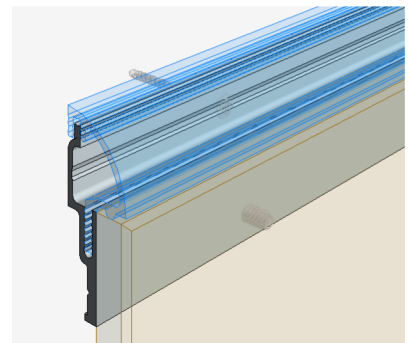
Title:		View:	Date:	 <b>Wall Panel Systems, Inc.</b> Tel: 877-333-4WPS support@wallpanelsystems.net Web: www.wallpanelsystems.net © 2016 Wall Panel Systems Inc.
MidWall Clip		Section	05/12/17	
Detail:	System Type:	Scale:	Draw By:	
K	3/8" Face Mounted Sys.	Full	WPS, Inc.	




1 Section L  
12" = 1'-0"

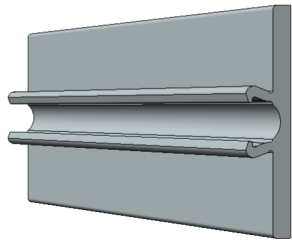


2 WCS-161 (L)  
Wainscot Cap

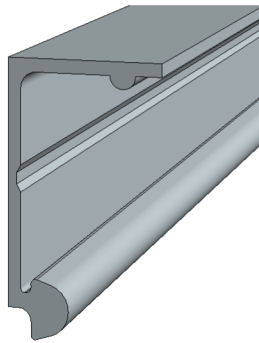


3 WCS-160 (L)  
Wainscot Clip

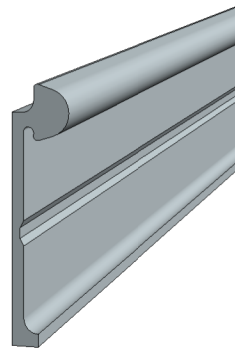
Title: <b>Wainscot System</b>		View: <b>Section</b>	Date: <b>05/12/17</b>	 <b>Wall Panel Systems, Inc.</b> Tel: 877-333-4WPS support@wallpanelsystems.net Web: www.wallpanelsystems.net © 2016 Wall Panel Systems Inc.
Detail: <b>L</b>	System Type: <b>3/8" Face Mounted Sys.</b>	Scale: <b>Full</b>	Draw By: <b>WPS, Inc.</b>	



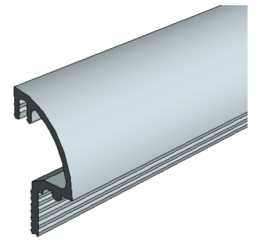
① 022 (U)  
Panel Clip



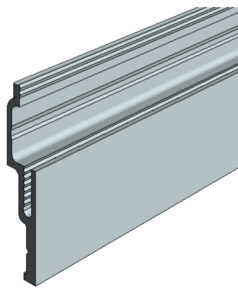
② FM-602 (U)  
Edge Mounting Rail



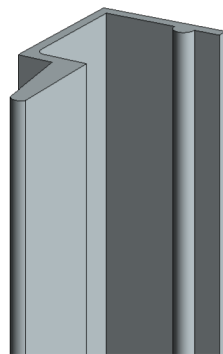
③ GEN-041 (U)  
Mid-Wall Clip



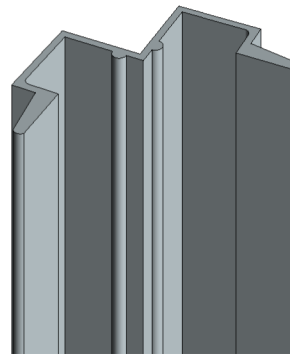
④ WCS-161 (U)  
Wainscot Cap



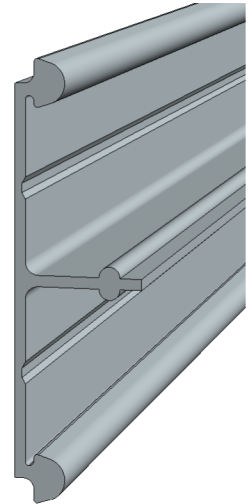
⑤ WCS-160 (U)  
Wainscot Clip



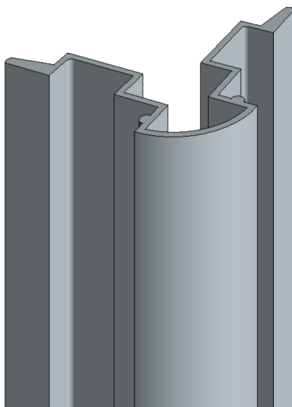
⑥ SHA-101 (U)  
Edge Trim



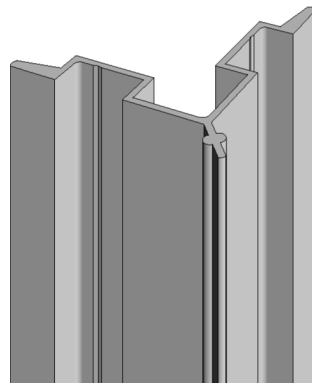
⑦ SHA-140 (U)  
Alnside Corner



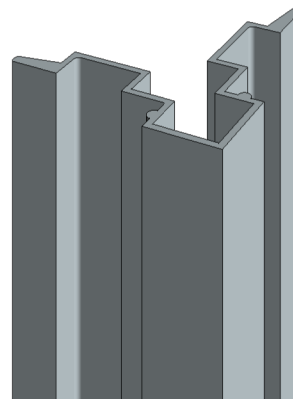
⑧ FM-621 (U)  
Horizontal Mounting Rail



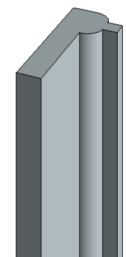
⑨ SHA-130 (U)  
Outside Corner Radius




⑩ SHA-139 (U)  
Outside Corner Milttered



⑪ SHA-131 (U)  
Outside Corner Square



⑫ SHA-612 (U)  
Vertical Joint

Title: <b>Parts List</b>		View: <b>3D</b>	Date: <b>05/12/17</b>	 <b>Wall Panel Systems, Inc.</b> Tel: 877-333-4WPS support@wallpanelsystems.net Web: www.wallpanelsystems.net © 2016 Wall Panel Systems Inc.
Detail: <b>U</b>	System Type: <b>3/8" Face Mounted Sys.</b>	Scale: <b>N/A</b>	Draw By: <b>WPS, Inc.</b>	