



TECHNICAL SPECIFICATIONS
PALACE OF FINE ARTS THEATRE

GENERAL INFORMATION

Mailing Address: Palace of Fine Arts Theatre
3301 Lyon Street
San Francisco, CA 94123

Stage Door Entrance: Southwest side of main building
Loading Door: Southwest side of main building, street level access

DIRECTIONS

By Vehicle:

From the North Bay

Take Highway 101 South across the Golden Gate Bridge. Exit Marina Boulevard, right on Lyon Street/Yacht Road, right on Palace Drive.

From the East Bay

Cross the Bay Bridge; Exit 9th Street, turn right onto 9th Street. Then merge onto Hayes Street. Turn right on Van Ness Avenue. Turn left on Lombard Street, then right on Lyon Street.

From the South Bay or Peninsula

Take Highway 101 North to the Market Street/Van Ness exit. Take Van Ness to Lombard. Turn left on Lombard Street, then right on Lyon Street.

By Bus:

The Palace of Fine Arts Theatre is accessible by San Francisco Muni buses #30, #43, #28, and #29. Muni bus lines #22, #41, and #45 also stop in the vicinity.



TELEPHONE NUMBERS & CONTACT INFORMATION

General Number:415-855-1607

Managing DirectorJason Hoover-**Jason@palaceoffinearts.org**

Technical Director.....Kevin Taylor-**KT@palaceoffinearts.org**

Front of House.....Dara Taylor-**Dara@palaceoffinearts.org**

Front of House.....Bridgette Stewart-**Bridgette@palaceoffinearts.org**

Cow Hollow CateringDiane Theodorelos-**Cowhollowcatering@gmail.com**

THE THEATRE

KEY DIMENSIONS

Proscenium Opening

| | | |
|--------|--------|--|
| Width | 73'-4" | |
| Height | 24' | |

Standard Openings

| | | |
|---------------------------------------|----------|-----------------------------|
| Trim on 1 st Border | 20' | |
| Height to bottom of Projection Screen | 19' - 6" | Lowest vertical obstruction |
| Height to Grid | 32' | |

Plaster Line to:

| | | |
|---------------------------------------|------------|--|
| Apron | -14'-4" | |
| Fire Curtain | -2' - 2" | |
| First Black Legs | -1' - 7" | |
| Plaster Line | 0' - 0" | |
| Main Red Traveler | +1' - 5" | |
| 1 st Border | +2' - 9" | |
| 1 st Electric | +4' - 3" | |
| 2 nd Black Legs | +6' - 6" | |
| 2 nd Border | +7' - 9" | |
| 19.5' x 44.5' Projection Screen | +9' - 4" | |
| 14.25' x 19' RP Screen | + 11 - 1" | |
| 3 rd Border | +14' - 6" | |
| 3 rd Black Legs | +15' - 0" | |
| 2 nd Electric | +16' - 5" | |
| Motorized 60' Pipe (1,500lb capacity) | +21' - 0" | |
| Dead Hung 75' Pipe @ 26' High | +22' - 6" | |
| 4 th Border | +25' -7" | |
| Mid Black Traveler | +26' -1" | |
| 3 rd Electric | +28' -0" | |
| 4 th Black Legs | +34' -0" | |
| Motorized 60' Pipe (1500lb capacity) | +34' - 7" | |
| 5 th Border | +37' - 0" | |
| Black Scrim on Traveler Track | +38' - 0" | |
| 4 th Electric | 39' - 4" | |
| Upstage Traveler Track | +45' - 6" | |
| White Cyc | + 47' - 0" | |
| Back Wall | + 78' -6" | |

Center Line to:

| | | |
|-------------------------------|-----|--|
| Stage Left Wall (down stage) | 40' | |
| Stage Left Wall (up stage) | 57' | |
| Stage Right Wall (down stage) | 40' | |
| Stage Right Wall (up stage) | 52' | |

CARPENTRY

Rigging and Fly Space

The Theatre does not have a standard counterweight system. There are two motorized pipes (see schedule above). All other battens are either dead hung or have traveler tracks. The grid is supported by the original 1915 truss system; any additional rigging beyond existing battens would require advance approval by Theatre Management.

Stage Floor

The stage floor is constructed using a "sprung basket-weave" system. The top layer is covered with Masonite hardboard. The floor's resilience is excellent for dance.

Vinyl Dance Floor

Visiting companies requiring a "Marley/Vinyl" type dance floor should provide their own flooring. The Palace of Fine Arts can arrange for the rental of a floor if needed.

Loading Dock

Access to the Theatre is through a Loading Door stage left center, leading from street level directly onto the stage. Parking permits are required for staging. The size of the loading dock door is 9'x9'.

Description of Portal

The interior of the Palace Theater is festooned with red curtains. Red curtains form the Proscenium Arch and primary sides; there are no solid walls. The curtains are not adjustable.

House Curtain

The House Curtain is a travelling red curtain, hand operated.

Masking Curtains

The Theatre has a limited number of black velour legs and borders.

Scenery Storage

Scenery Storage is available in the wings, upstage areas and on the loading dock area.

Bottom Pipe

Visiting companies should provide their own bottom pipe for drops.

Fire Proof Certificates and Restrictions

All scenery brought into the Palace of Fine Arts Theatre must be flame-proofed and comply with all San Francisco City, County and State fire and safety regulations. Certificates to prove compliance may be requested of visiting companies. There are strict regulations governing the use of pyrotechnical devices, flash, smoke and fire effects on stage. Please contact the Technical Director well in advance if your production involves pyrotechnics or flame effects.

LIGHTING AND ELECTRICS

Control

The Lighting Board is a GrandMA console with 2048 channels, 4 DMX 512 outputs, built in touch screen, and 2 external monitors. It is located in the control booth at the back of the auditorium.

Follow Spots

There are two Ultra Arc Titans (1200w HMI) spots located above the booth at the back of the auditorium. Additional spot locations are available for rental instruments.

Company Switch

Located Stage Left—400 AMP 3 Phase

Genie Lifts and Ladders

There are two (2) AWP 30 – S Genie lifts capable of reaching a 32' working height. This lift is electric/hydraulic. Several ladders are also available in sizes ranging from 6' to 12'.

Projection Equipment

- (1) PT – DZ8700 - 10K Lumen Panasonic DLP Projector w/long zoom lens or short throw zoom lens.
- (2) PT – DW5100 5K Lumen Panasonic DLP Projector with 2 long zoom lenses and 2 standard zoom lenses.
- (1) 19.5' x 44.5' front projection perforated screen (adjustable side masking to fit various aspect ratios)
- (1) 14.25' x 19' rear projection screen
- (1) Oppo BluRay Deck

LIGHTING INVENTORY AND DIMMERS

| No. | Type |
|-----|-------------------------------------|
| 144 | Digital dimmers |
| 122 | 2.4 KW (6 reserved for Houselights) |
| 12 | 4 KW |
| 24 | Channel Digital to Analog converter |

| No. | Distribution |
|-----|---|
| 24 | 2K to Beam Position |
| 24 | 2K to each Electric (1-4) |
| 12 | 4K to downstage floor pockets (6 per side) |
| 6 | 2K to upstage floor pockets (3 per side) |
| 6 | Circuits to House Lights Note: the 24 2K's for the 4 th Electric and the 12 4K's for the DS floor pockets are available as pin connectors at the back of the dimmer rack SL |

| Instrument | Total Available |
|--|-----------------|
| ETC S4, 26 degree; 575w | 12 |
| ETC S4, 36 degree; 575w | 10 |
| ETC S4, 10 degree; 575w | 6 |
| Altman 20 degree, 575w | 8 |
| Strand 8" Fresnels 2K w/Wybron Forerunner Color Chg. | 12 |
| Altman PAR 64 MFL 1K | 36 |
| Altman 2 Cell Far Cyc 1K each | 6 |
| Altman 1 Cell Far Cyc 1K each | 6 |
| R40 4 circuit Striplights 150w ground row | 6 |
| Martin Mac 700 Profile | 8 |

Totals include the permanently mounted front-of-house equipment.

This inventory is subject to change and availability. Please consult the Technical Director for availability of misc. stands, floor bases, top hats, drop in irises, side arms and other hardware.

The Palace Theatre uses a standard “house” hang which may not be altered except under special circumstances as discussed with the Technical Director. Visiting companies are required to restore the house hang to its original position and circuiting

HOUSE AUDIO SYSTEM

The Sound System includes state-of-the-art speaker, amplification and intercom systems. There is also an infra-red assisted listening headset system in the house. The house loudspeaker systems are hung from the FOH position on either side of the stage.

PLEASE NOTE – The house dB limit at FOH is 98dBA Leq

Main Console

Avid VENUE SC48 digital console

- 48 analog mic/line XLR inputs, 32 analog line outputs
- 16 aux Sends, 8 Groups, plus 8 mono matrixes (linkable as up to 4 stereo matrixes)
- Choice of Left-Right plus Mono or Left-Center-Right Mains bus configuration
- 26 touch-sensitive, motorized faders: 16 input, 8 output master, 1 Flex Channel, and 1 Mains
- 16 assignable, push-switch rotary encoders with multi-segment LED rings enable immediate access to key parameters

More info can be found by following this link:

<http://www.avid.com/US/products/VENUE-SC4>

Playback

- (1) Numark CDN-88 Dual Professional CD Player

Main Speakers

- (18) Meyer Sound M’elodie Ultracompact High Power Curvilinear Array Loudspeakers
 - flown (9) cabinets per side
- (4) Meyer Sound M1D Ultracompact Curvilinear Array Loudspeakers
 - all 4 speakers placed along the front of the stage and used as front fill
- (4) Meyer Sound 600HP High Powered Subwoofers
- (1) Meyer Sound Galileo – Loudspeaker Management System

Speaker Processing via Galileo is controlled by a MAC based desktop located at the FOH sound position.

Please visit: **www.meyersound.com** for additional information.

Monitor Console:

Yamaha M7CL-48

48 channel digital console

Ramtech 54 Channel Isolated split w/50’ snake and fan in

Monitor Speakers

- 2 - Meyer System MTS- 4 Powered Speaker - side fill
- 6 - Meyer System MJF – 212A Powered Stage Monitor Speaker
- McCune SM-5 System (incl. 5 Hafler 200 amplifiers)
- 4 Cabinets hung as side fill

Microphones, Cables, Intercom

Wireless Mics:

- (4) channels of Shure UHF-R series J5 frequency wireless microphones
- (2) Shure UR4D dual channel receivers
- (1) Shure UA845-US Antenna Distribution system
- (2) Shure UA830WB Antenna amplifiers
- (4) Shure UR2 Handheld microphone transmitters with SM58 and/or BETA87A capsules
- (4) Shure UR1 Beltpack microphone transmitters with Shure 184 Lavalier microphones
- (4) Countryman E-6 microphone

Wired Mics:

- (1) AKG D-112 Kick Drum mic
- (6) AKG C-1000 condenser mics
- (5) Shure SM 58
- (4) Shure Beta 57A
- (8) Shure SM 57
- (4) Shure SM 77
- (3) Sennheiser K3U/ME80 shotgun mics
- (5) Crown D-160 PCC floor mics
- (4) Crown PZM area mics
- (1) Sennheiser 825S (w/switch)
- (1) Shure 565SD (w/switch)

Direct Boxes:

- (4) Countryman Active Direct Boxes
- (3) Passive Direct Boxes

Cabling:

- (1) 48 channel passive snake made by Horizon
 - 48 input channels
 - 10 return channels
 - snake box is located off stage left
- (1) 16 channel 100' sub snake
 - 4 1/4" returns
- (1) 12 channel 75' sub snake
 - 4 XLR returns
- (1) 8 channel 50' sub snake
- (40) 30' Whirlwind MK4 XLR
- (20) 25' Whirlwind MK4 XLR
- (10) 50' Whirlwind MK4 XLR
- (5) 100' Whirlwind MK4 XLR
- (15) 1/4" instrument cables

Microphone Stands:

- (8) Ultimate tall stands w/boom arms (black)
- (2) Atlas tall stands w/boom arms (black)
- (6) Atlas tall straight stands (silver)
- (5) Atlas short stands w/boom arms (black)
- (1) Atlas Heavy base tall stand w/boom (silver)
- (5) Atlas desk stands (silver)

Clear -Com:

- (1) Clear-Com MS200 Main Station
- (6) Clear-Com RS-501 single channel beltpacks
- (4) Clear-Com RS-601 single channel beltpacks
- (1) Clear-Com RS-502 dual channel beltpacks
- (9) Clear-Com single muff headsets

(2) Clear-Com dual muff headsets

Standard Clear-Com positions at the Palace are as follows:

- One position at the Lighting Board (FOH)
- One position at the Sound Board (FOH)
- One at each of the Follow spot positions (2) (FOH)
- One inside the Projection Booth (FOH)
- One Stage Right for an ASM
- One Stage Left at the curtain
- One Stage Left at the Stage Managers podium

The Palace does not have RF Com available.

Preferred outside vendors for additional sound or backline rentals at the Palace of Fine Arts Theatre are:

Sound on Stage www.soundonstage.com

ProMedia/Ultrasound www.ultrapromedia.com

Backline—Hiway 101 Productions—John Oshima 415-606-4593

Studio Instrument Rentals www.sirsf.com

MISCELLANEOUS STAGE INFORMATION

Stage Manager's Desk

The Stage Manager's desk is located down stage left.

Tech Table

There are tech tables available in the house for technical rehearsals

Data and Internet

WiFi is available upon request; please enquire as to the fee for use.

Production Office

There is no dedicated production office available in the house. If one is needed there is an open room backstage that can be set up as an office; this room is subject to availability. Telephone service can be arranged with advance notice to set up billing procedures with the Theater Manager. A dressing room can also be used for this purpose if one is available.

Prop Tables

There are folding chairs and folding prop tables available for use on the stage and in the wings. 4-6'

Unions

All work on stage and in the Lobby is under the jurisdiction of IATSE Local 16. Information on specific work rules, regulations and size of crews can be obtained from Theater Management.

Backstage Craft Services

Cow Hollow Catering can provide backstage craft services.

DRESSING ROOMS AND WARDROBE

Size and Capacity of Rooms

| | | | | |
|--------|------------|----------|----------|------------------|
| Room A | 7'6" x 21' | 6 people | 1 Shower | 1 Toilet, 1 Sink |
|--------|------------|----------|----------|------------------|

| | | | | |
|------------|---------------|-----------|-----------|-------------------------------|
| Room B | 8' x 17' 6" | 6 people | 1 Shower | 1 Toilet, 1 Sink |
| Lounge | 22'6" x 18'6" | 12 people | No Shower | 5 Toilets, 3 Sinks |
| Green Room | 19'4" x 28'3" | 25 people | No Shower | 3 Toilets, 5 Urinals, 3 Sinks |

Wardrobe and Laundry Facilities

There is a washer and dryer available in the Premises. The visiting company, if needed should supply irons, ironing boards, steamers and sewing machines.

Dry Ice Storage

A storage container for dry ice is available.

MUSIC EQUIPMENT

Chairs

There are 10 musicians' chairs available.

Stands

There are 10 music stands with lights available.

Piano

Visiting companies requiring a grand piano for the stage or pit have access to the house Yamaha G-1. There is a fee for tuning.

FRONT OF HOUSE

Seating Capacity

The Palace Theatre features continental seating with wide aisles and comfortable seats. The facility is ADA accessible.

| | |
|-----------------------|------------|
| Orchestra seating | 952 |
| Wheelchair seats | 10 |
| Total Capacity | 962 |

Late Seating Policy

The visiting company can determine late seating accommodations that are appropriate to the particular production subject to approval by Theatre Management.

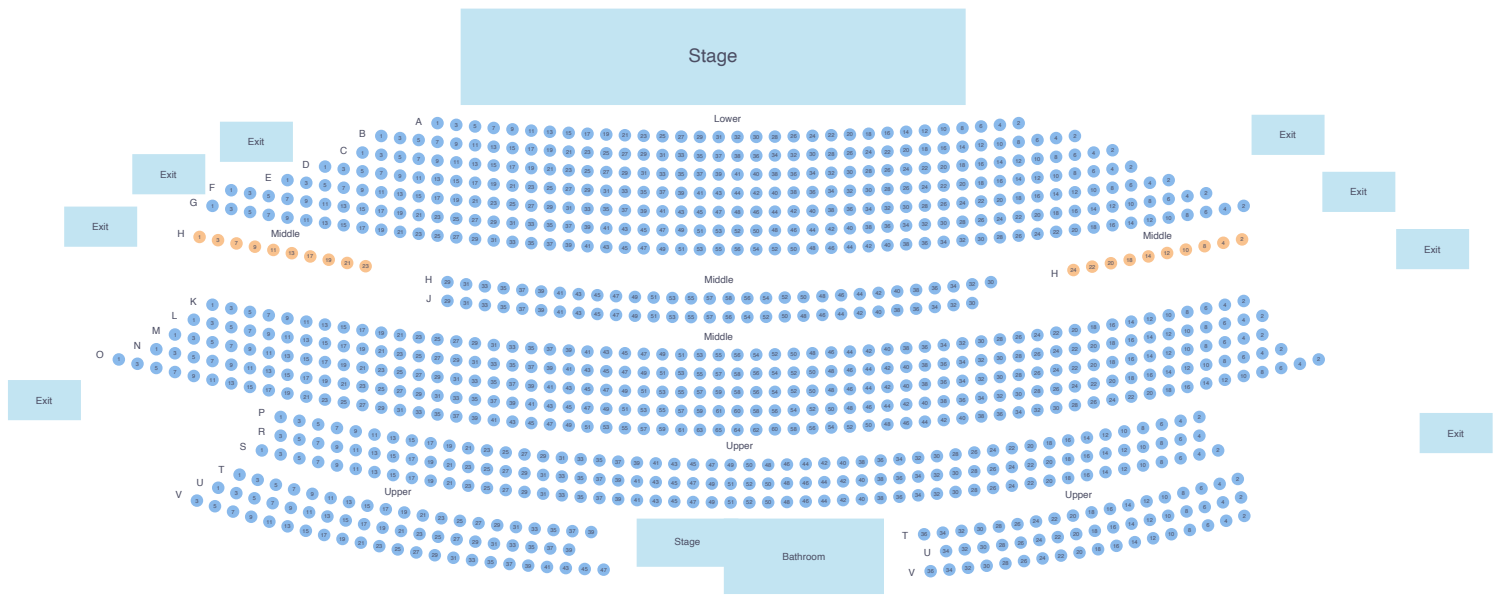
House Opening

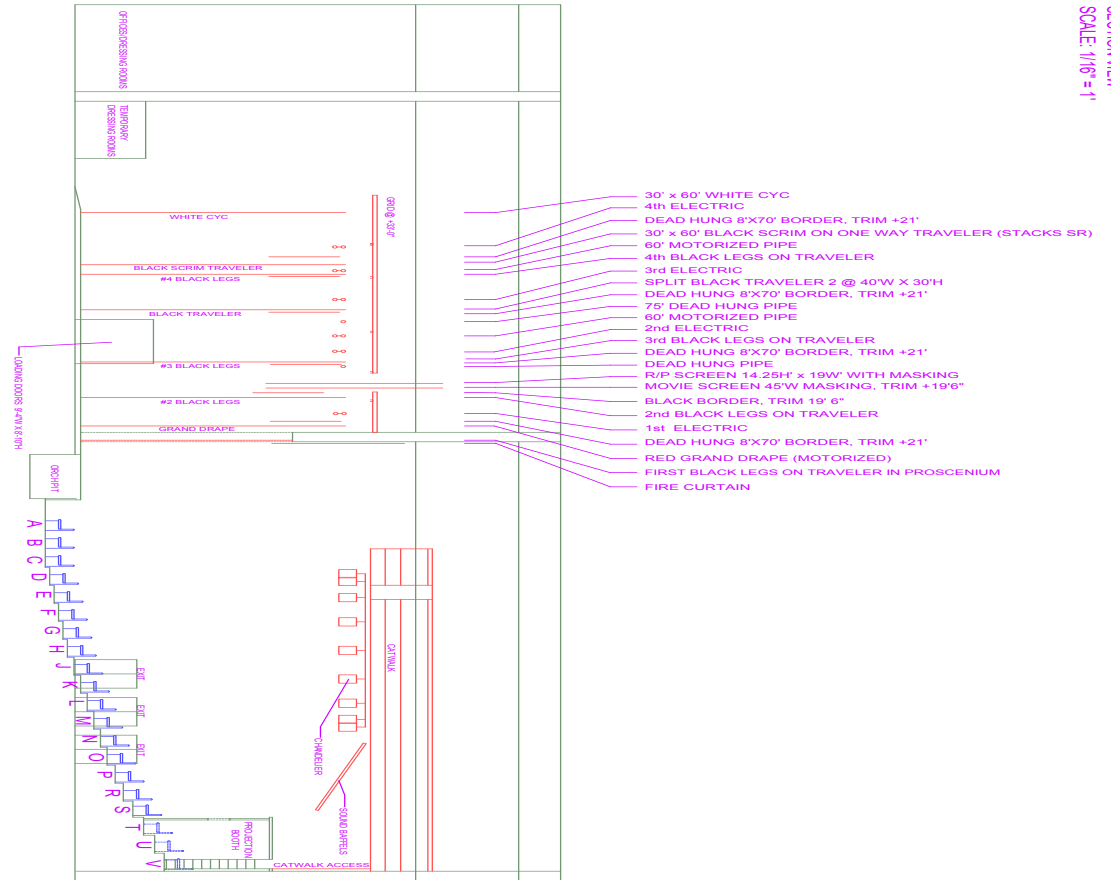
The House opens to the audience at one half hour prior to the announced curtain time.

Lobby Walls

The North Lobby wall may be used for a projection surface No tape, pins, nails or tacks are allowed on lobby walls.

SEATING CHART

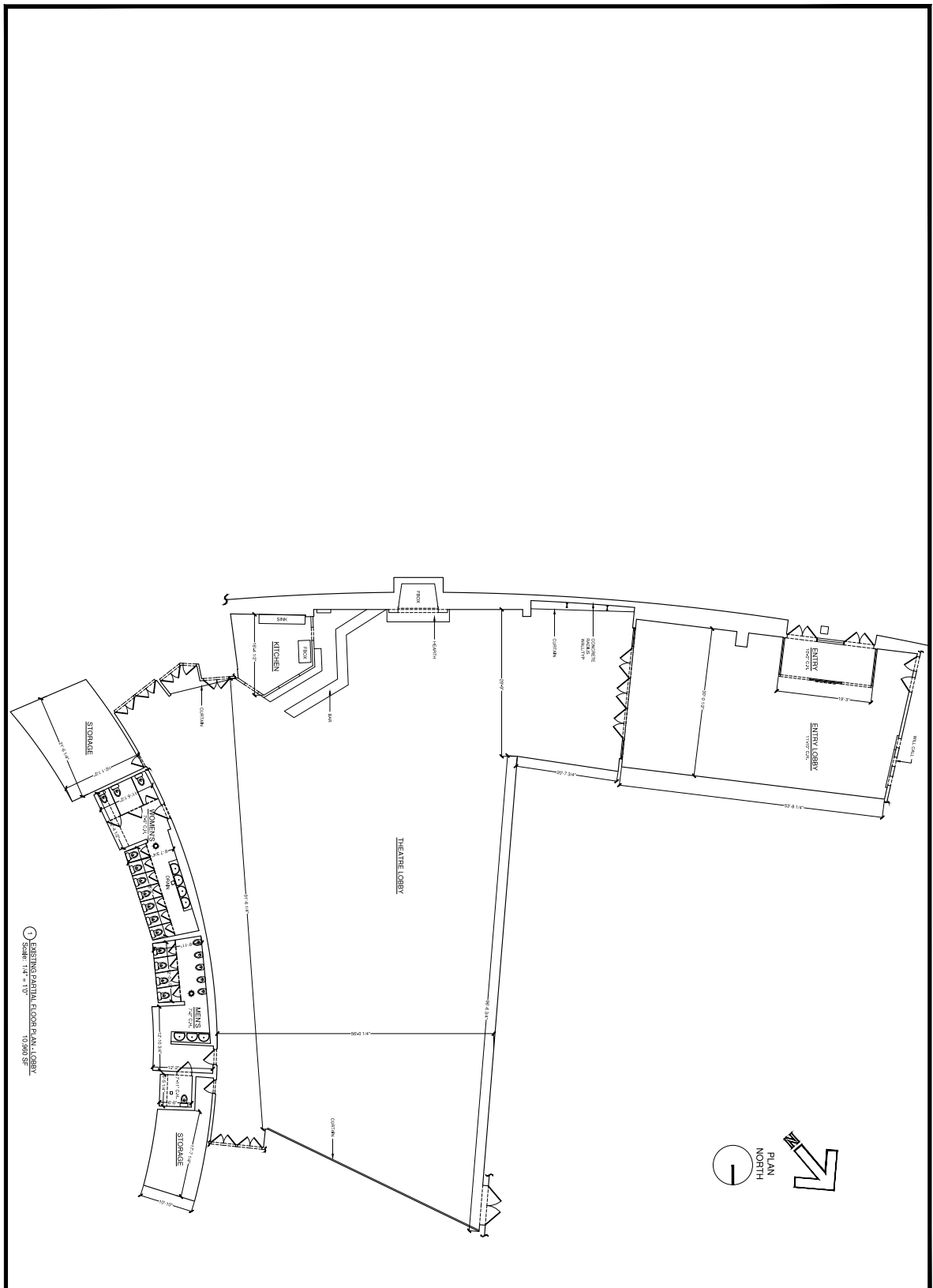




THE LOBBY

The Lobby of the Palace Theatre is an expansive space for presenting receptions, parties, and other events.

| | | |
|-----------------------------|---------------------|----------------------|
| Room Size: | 8,000 sq ft. | 743.22 sq m |
| Capacity: | 350 Cocktail | 325 Dining Reception |
| Preferred Catering vendor: | Cow Hollow Catering | |
| Kitchen on Premises: | No | |
| In House Liquor Requirement | Yes | |
| Live Music/DJ allowed | Yes | |
| A/V equipment available | Audio, Projection | |
| Wheelchair Accessible | Yes | |



① EXISTING PARTIAL FLOOR PLAN LOBBY
Scale: 1/4" = 1'-0"
10,000 SF

| | | | | |
|--|---|--|--------------------|--|
| <div> <div>1</div> <div>SHEET NO.</div> </div> | 3301 LYON STREET, SAN FRANCISCO, CA 94123 | | 415.621.2404 | <div> <div>Existing Conditions</div> <div>Drafting</div> </div> <div> <div>610 22nd St, Suite 303</div> <div>San Francisco, CA 94110</div> <div>ECDesigns.com</div> </div> |
| | | | SEPTEMBER 30, 2019 | |