



# MPLS-WAN

syringanetworks.net

## Any-to-Any Connectivity

Any network, any speed, any interface. We like to call it any-to-any and it's what we do best.

The role of shared applications and cloud-based services has continued to make organizations more reliant on their telecommunications infrastructure. Applications like online banking, inventory control, point-of-sale systems, voice and video services, as well as multi-site intranets have become commonplace and create an ever increasing demand for reliable connectivity and internet bandwidth.

By combining our fully-redundant self-healing network infrastructure with the advanced capabilities of our 100G MPLS core, we are able to provide the level of service and the flexibility to meet even the most challenging customer requirements.

## MPLS vs. Traditional Connectivity

Multi-protocol label switching (MPLS) networks provide a number of improvements to existing switched network infrastructures. With an MPLS network, customers can interconnect multiple-sites even if each site is using different network interfaces. This in turn reduces the cost of adding new sites and allows for migration instead of costly fork-lift upgrades. MPLS also means that a single IP-based network infrastructure can support multiple applications.

### Traditional Services

**Private Line** - When your application requires a dedicated network with dedicated bandwidth, our Private Line service provides you with a secure, protocol agnostic solution.

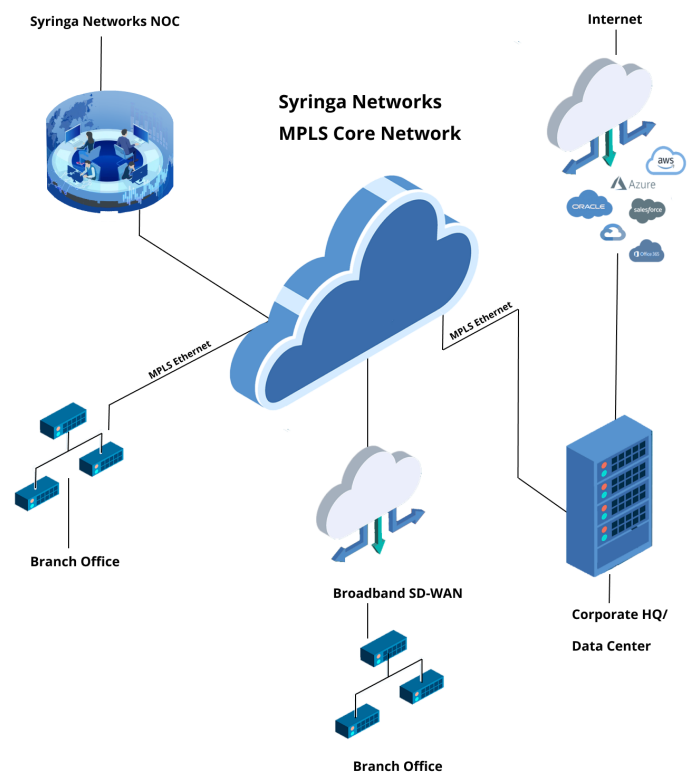
**Ethernet** - Industry-standard carrier-grade Ethernet that is MEF 2.0 certified for your layer 2 WAN needs.

### Next Generation Services

**L3 IPVPN** - True "any-to-any" connectivity solution with traffic prioritization providing a fully meshed, next-generation network delivered over our MPLS core.

**Next-Gen WAN Service** - Combo Port: Combines both WAN services with business Internet access on one cost-effective network solution that is delivered via our MPLS core backbone.

## MPLS-WAN Services




**Our Network, Your Success**

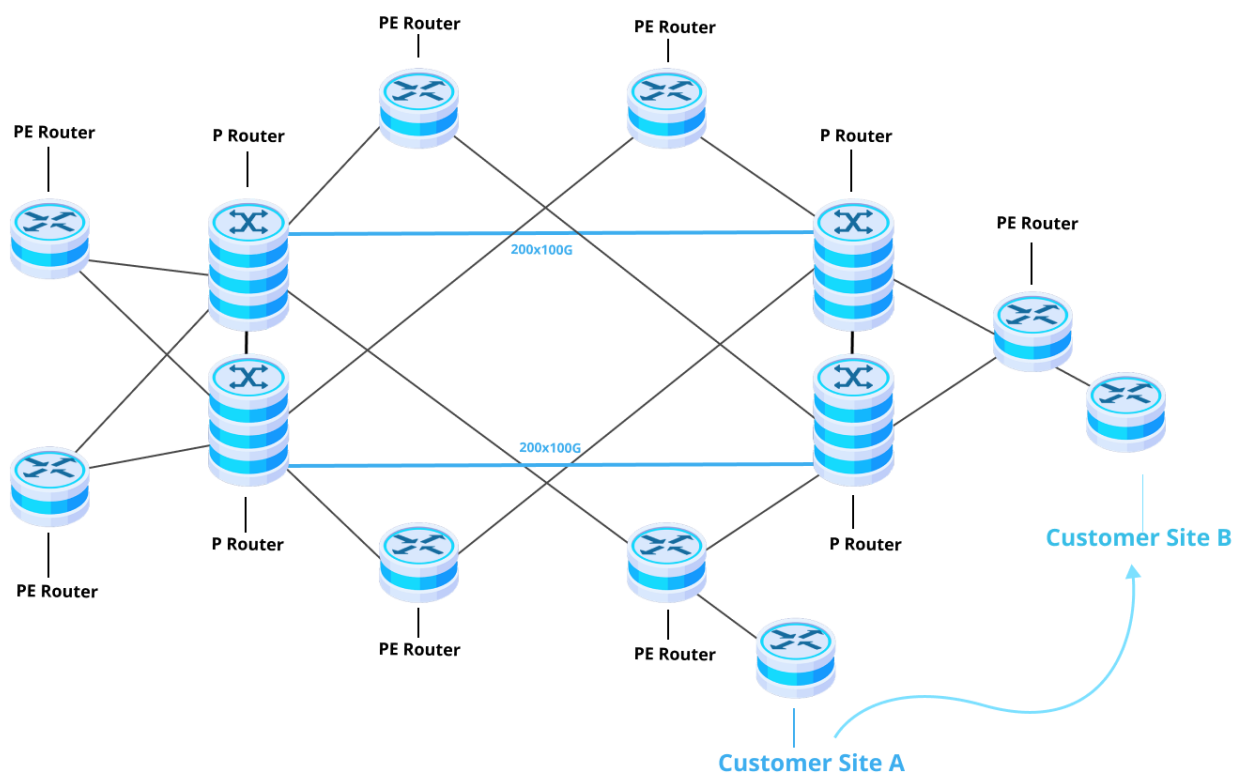
syringanetworks.net

## MPLS-WAN

syringanetworks.net

## MPLS Network Overview

Our purpose built network results in optimized route paths for our customers. WAN customers are able to have local traffic stay local as a result of our regionally dispersed PE routers - shorter paths equate to increased performance. This also means that traffic is not back-hauled to a central location only to be sent back to the same location.



## Unmatched Service

Syringa Networks provides your business with more than a connection to the Internet - we are a trusted partner that works with you to develop a customized solution to meet the needs of your business. We provide your business with the added security of a 24x7 Network Surveillance Center.