



# UNISON

ELLIOTT BAY

*Unified Innovation*

THE  
RMR  
GROUP



351 · 401 · 501 Elliott Avenue West | Seattle, Washington

[UnisonElliottBay.com](http://UnisonElliottBay.com)



# Reintroducing a Three-Building Destination

**Unison is a three-building workplace destination located on Elliott Bay's waterfront with unobstructed views of the Puget Sound and Olympic Mountains.**

Undergoing revitalization directed by The RMR Group, Unison will exhibit a reenergized on-site experience tailored to its next generation of life science and tech-driven companies.

## Construction Milestones

**GROUNDBREAKING**  
*March 2022*

**AMENITY COMPLETION**  
*December 2023*

**CORE & SHELL COMPLETION**  
*Q4 2023*

**SPEC SUITE AVAILABILITY**  
*January 2024*



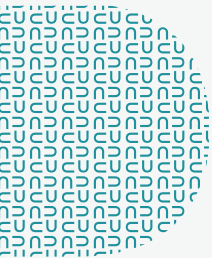
Available in Q1 2023

# Advancing Together

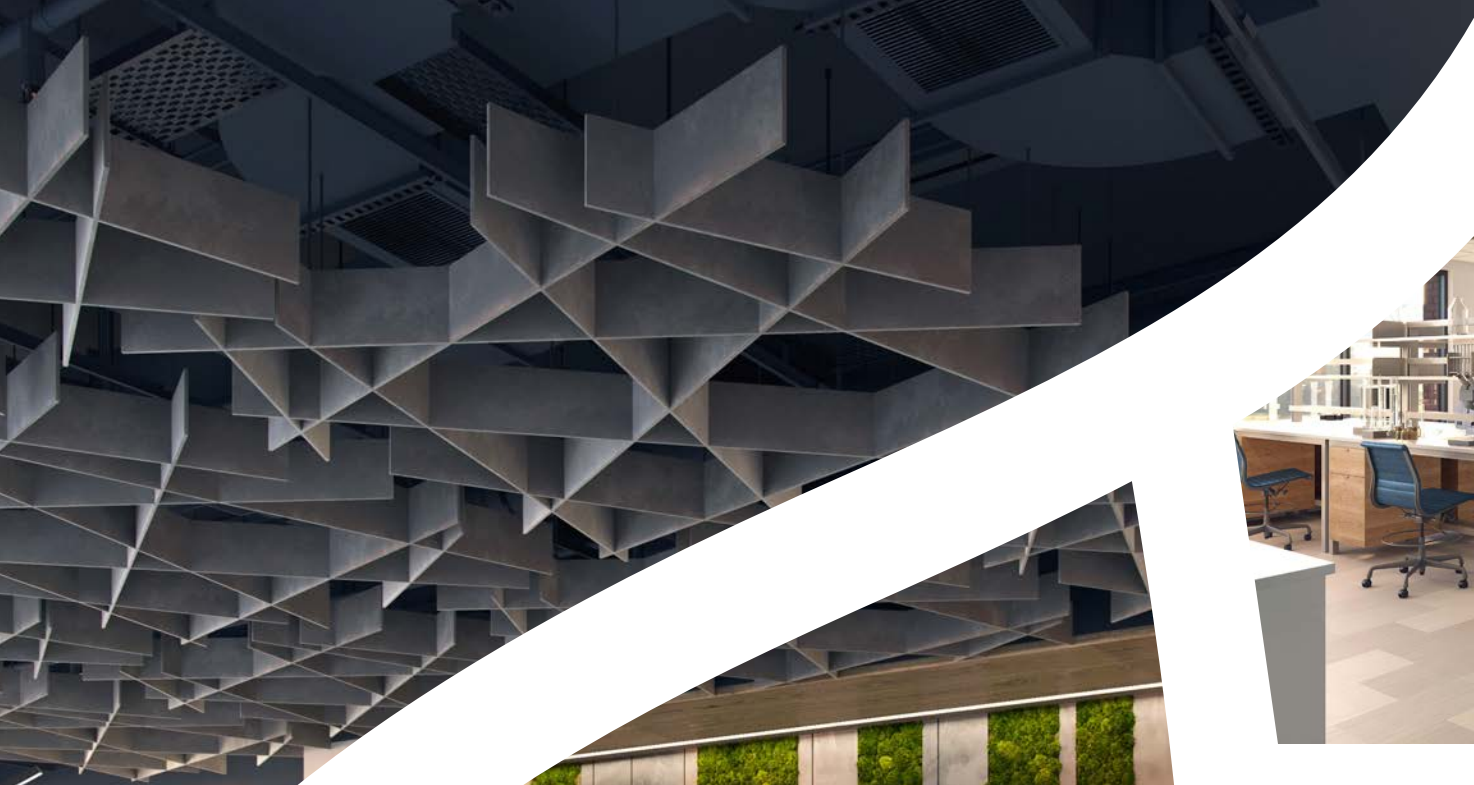
With +/-215K SF remaining available across outfitted spec labs and customizable full-building lab and office opportunities, anchor your progress and advance together at Unison.

## Differentiating Building Features

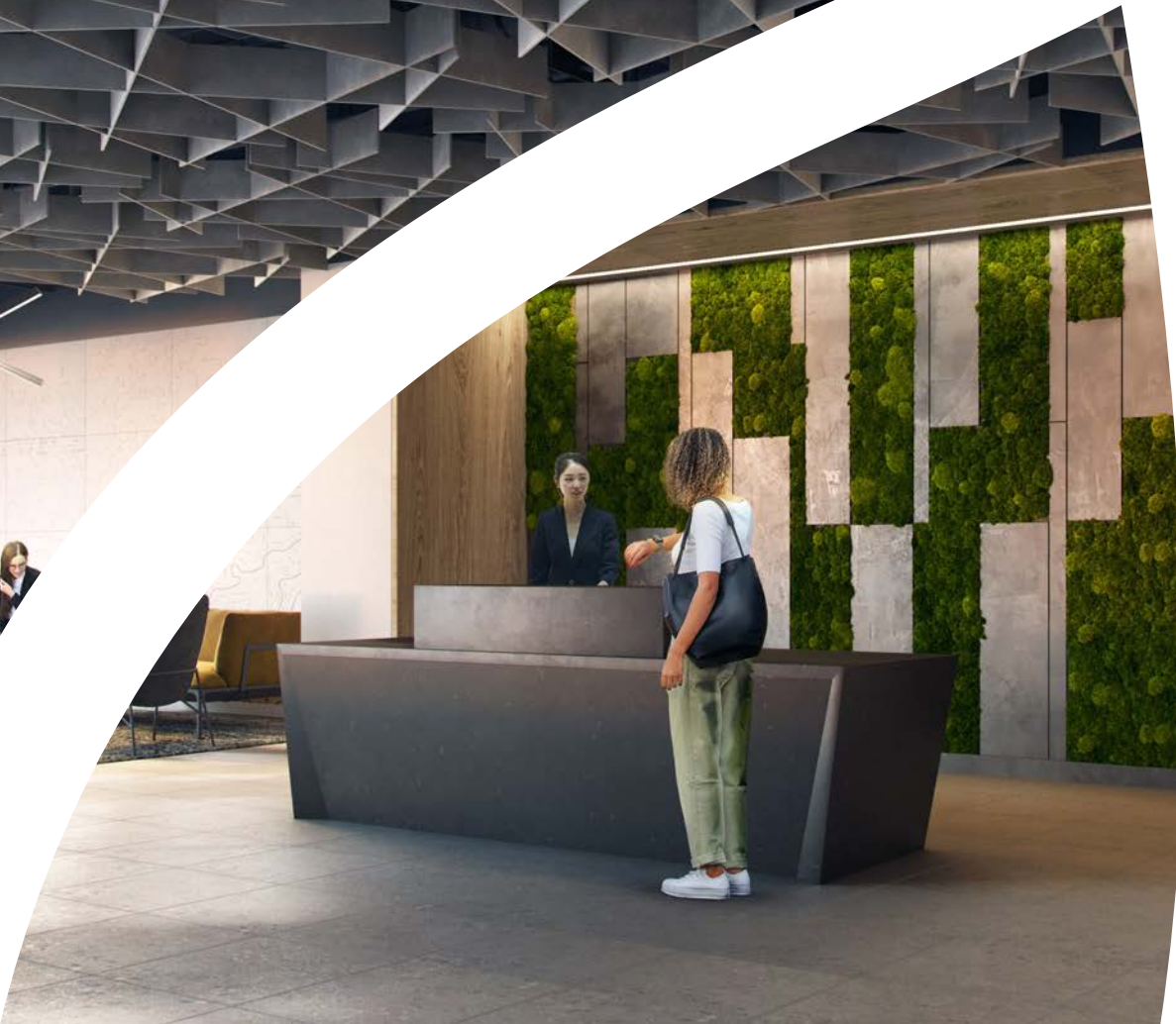
- Spec suites range from **12,500 to 25,000 SF**
- **14' floor-to-floor heights** in buildings 401 and 501
- Covered and surface parking available **1.7/1,000 SF**
- **EV Charging** stations available
- **9,500 AMPS of 277/480V** power available
- **2 Backup power generators** service all 3 buildings
- On-site **management office**







OUTFITTED LAB SPEC SUITE



401 UNISON | MODERNIZED RECEPTION



FLEXIBLE OFFICE-TO-LAB SPEC SUITE

# Modern Comforts that Drive Innovation

**Setting a Class A standard, Unison will stimulate productivity for and promote the wellbeing of its talented community.**

Secure bike storage and showers will greet cyclists on their way in, while the state-of-the-art fitness center will welcome gym-goers. The fully equipped conference facility will serve as a home base for team training and

client meetings. A planned chef-driven restaurant and grab-and-go cafe will offer healthy on-site dining options in addition to Lower Queen Anne's diverse foodie scene.

## Outdoor Amenity Highlights:



Indoor/outdoor  
connected  
chef-driven F&B



Elliott Bay  
waterfront views



Trellis-covered  
and open air  
table seating



Central turf with  
lounge-style  
seating

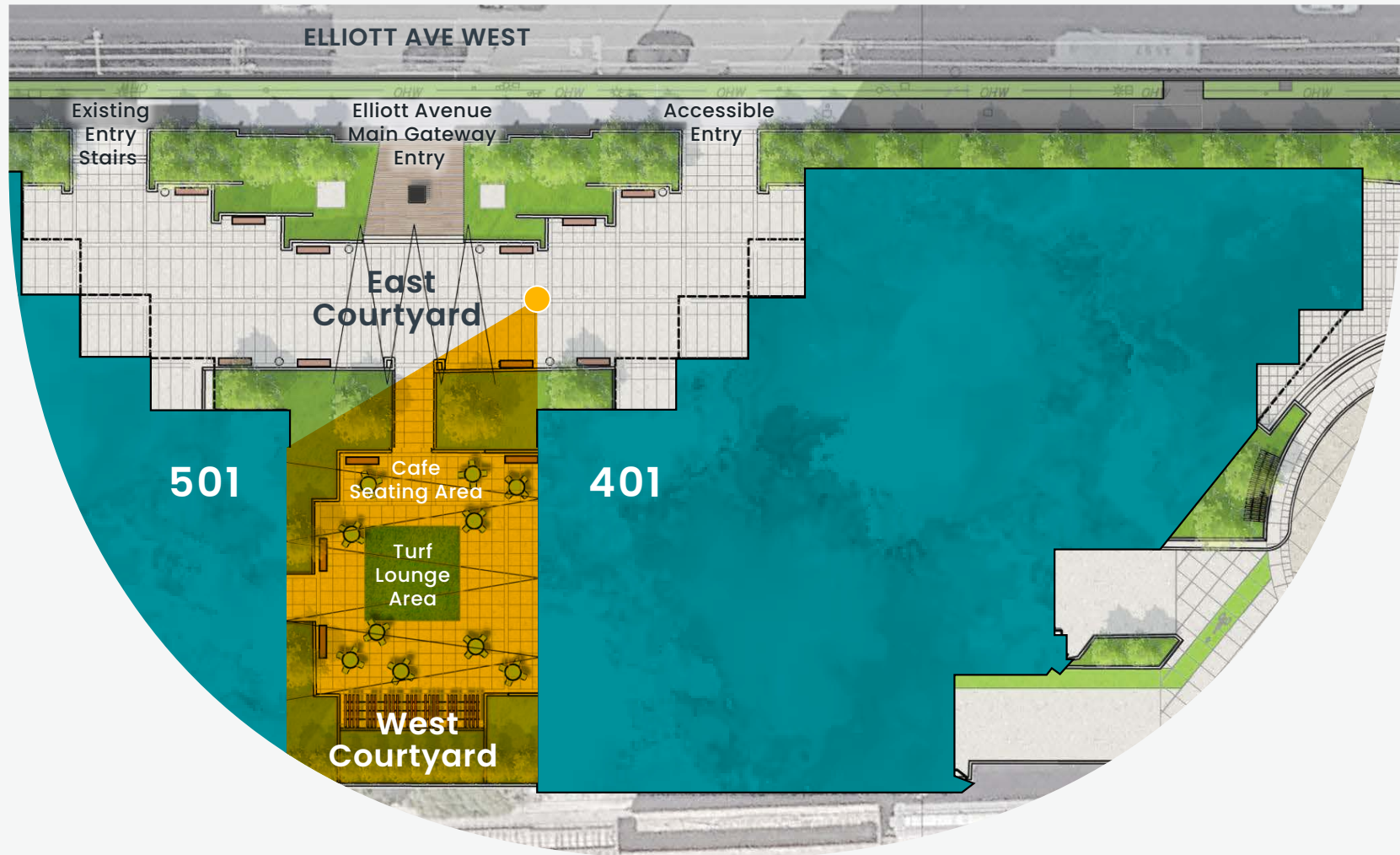


WiFi connectivity  
throughout





WEST COURTYARD VIEW OF ELLIOTT BAY



# Certifications that Prioritize Your Team's Well Being

Enveloped within a LEED and Fitwel certified environment with advanced air systems and operating practices, Unison will be intentionally programmed for wellness.







..... FULLY RENOVATED CONFERENCE FACILITY .....



..... UPGRADED FITNESS CENTER, LOCKERS AND SHOWERS .....

# Surrounded by Seattle's Choice Green Spaces and Mainstays

Beyond its all-inclusive on-site experience, Unison's location is the perfect vantage for accessing Centennial, Myrtle Edwards and Olympic Sculpture Parks and the best of Lower Queen Anne's diverse foodie scene. Surrounded by Seattle's choice green spaces, the Bay Trail, Key Arena and Seattle Center, this is a prime destination for accessing Seattle's best escapes.

## Food and Beverage

1. Bahn Thai
2. Cafe Cosmos
3. Champagne Diner
4. Citizen Cafe
5. Dick's Drive-In
6. Fuji Bakery
7. Moontree Sushi and Tapas
8. Queen Anne Beerhall
9. Sisters and Brothers
10. Starbucks
11. Sugar Bakery & Coffee House
12. Toulouse Petit Kitchen & Lounge

## Parks and Recreation

1. Olympic Sculpture Park
2. Myrtle Edwards Park
3. Centennial Park
4. Kinnear Park

## ••• Elliott Bay Trail System

## Lodging

1. Belltown Inn
2. Fairfield Inn & Suites by Marriott
3. Hyatt House
4. Hyatt Place
5. Homewood Suites by Hilton
6. The Edgewater Hotel





Lower  
Queen Anne

WEST OLYMPIC PLACE

ROY STREET

WEST MERCER STREET

MCCAW HALL

Uptown

KEY ARENA

Seattle  
Center

MUSEUM OF  
POP CULTURE

SPACE  
NEEDLE

PACIFIC SCIENCE  
CENTER

3RD AVENUE WEST  
1ST AVENUE WEST  
QUEEN ANNE AVENUE NORTH  
1ST AVENUE NORTH  
DENNY WAY

5TH AVENUE NORTH

4TH AVENUE

Elliott Bay

Belltown

BROAD STREET

2ND AVENUE

1ST AVENUE

WESTERN AVENUE

ALASKAN WAY

BELL STREET

99

2

4

1

6

1

2

8

5

5

11

10

12

1

10

4

3

9

4

3

6





## Joe Gowan

+1 206 607 1738

joe.gowan@jll.com

## Tim Jones

+1 206 971 7011

tim.jones@jll.com



© 2023 Jones Lang LaSalle IP, Inc. All rights reserved. All information contained herein is from sources deemed reliable; however, no representation or warranty is made to the accuracy thereof. Jones Lang LaSalle Brokerage, Inc.

[UnisonElliottBay.com](https://UnisonElliottBay.com)

