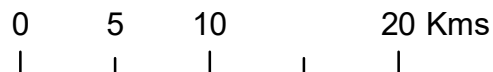


Upper Burdekin Wind Farm LVIA















Figure 7: Key Visual Receptors and Tourist Drives Map

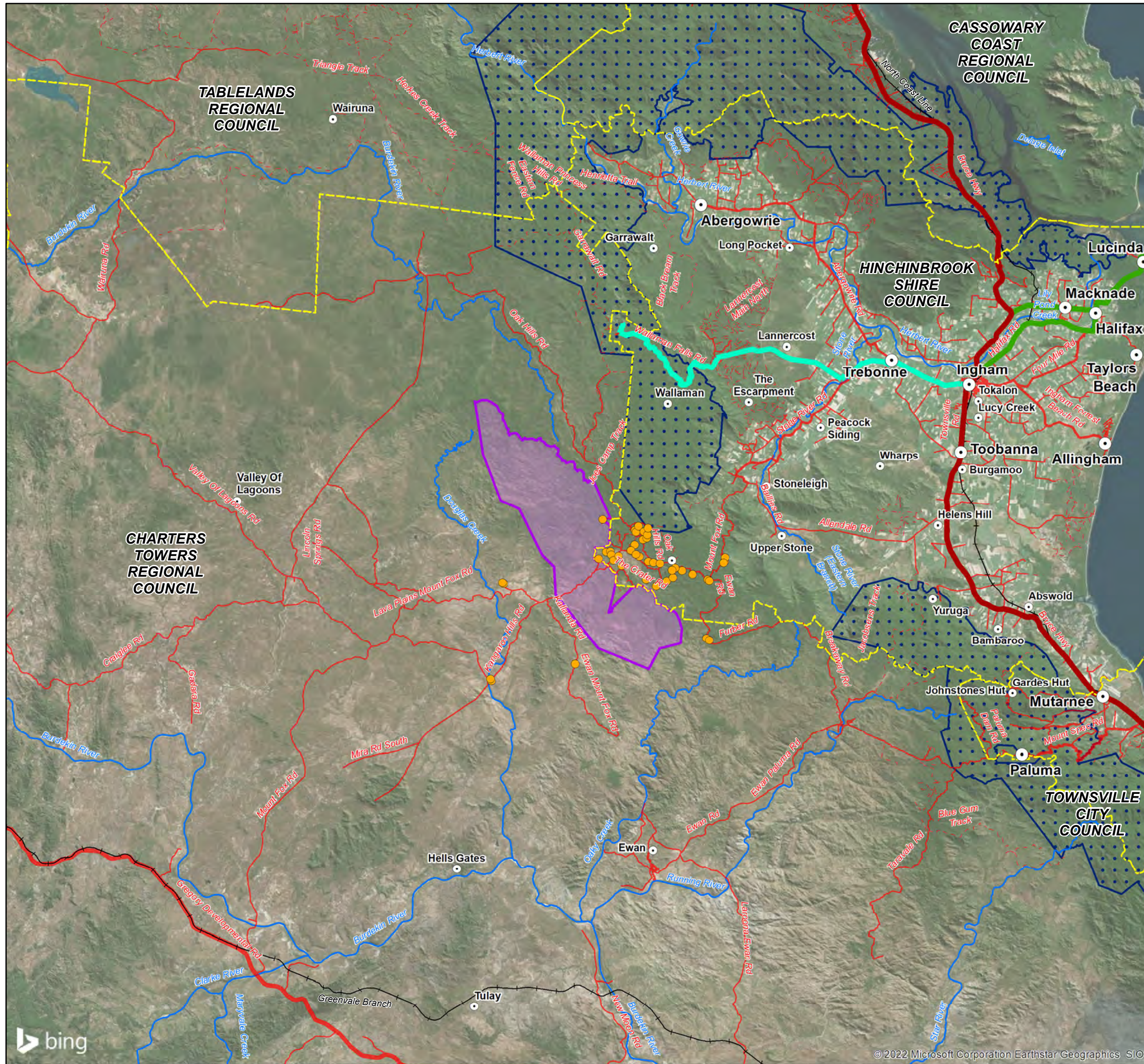
Date Produced: 11/10/2022
Projection: MGA94 Zone 55
Scale at A3 Size 1:400,000



© State of Queensland (DoR) 2022
© Cmwlth Dept of Climate Change, Energy,
the Environment and Water 2020

Legend

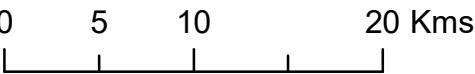
- | | | | |
|--|--|---|-------------------------------------|
|  | Population Centre |  | Rail Network (excluding light rail) |
|  | Localities |  | Highways |
|  | Nearby Private Dwellings |  | Main Roads |
|  | Local Government Areas |  | Minor Roads |
| | Pacific Coast Way,
Great Green Way and
Drive from Sea to Sky
(Townsville to Ingham) |  | Tracks |
|  | The Great Green Way |  | Major Watercourses |
|  | Drive from Sea to Sky |  | Upper Burdekin WF
Site Boundary |
| | |  | Wet Tropics World
Heritage Area |



Upper Burdekin Wind Farm LVIA

Figure 8: Representative Viewpoint
Locations

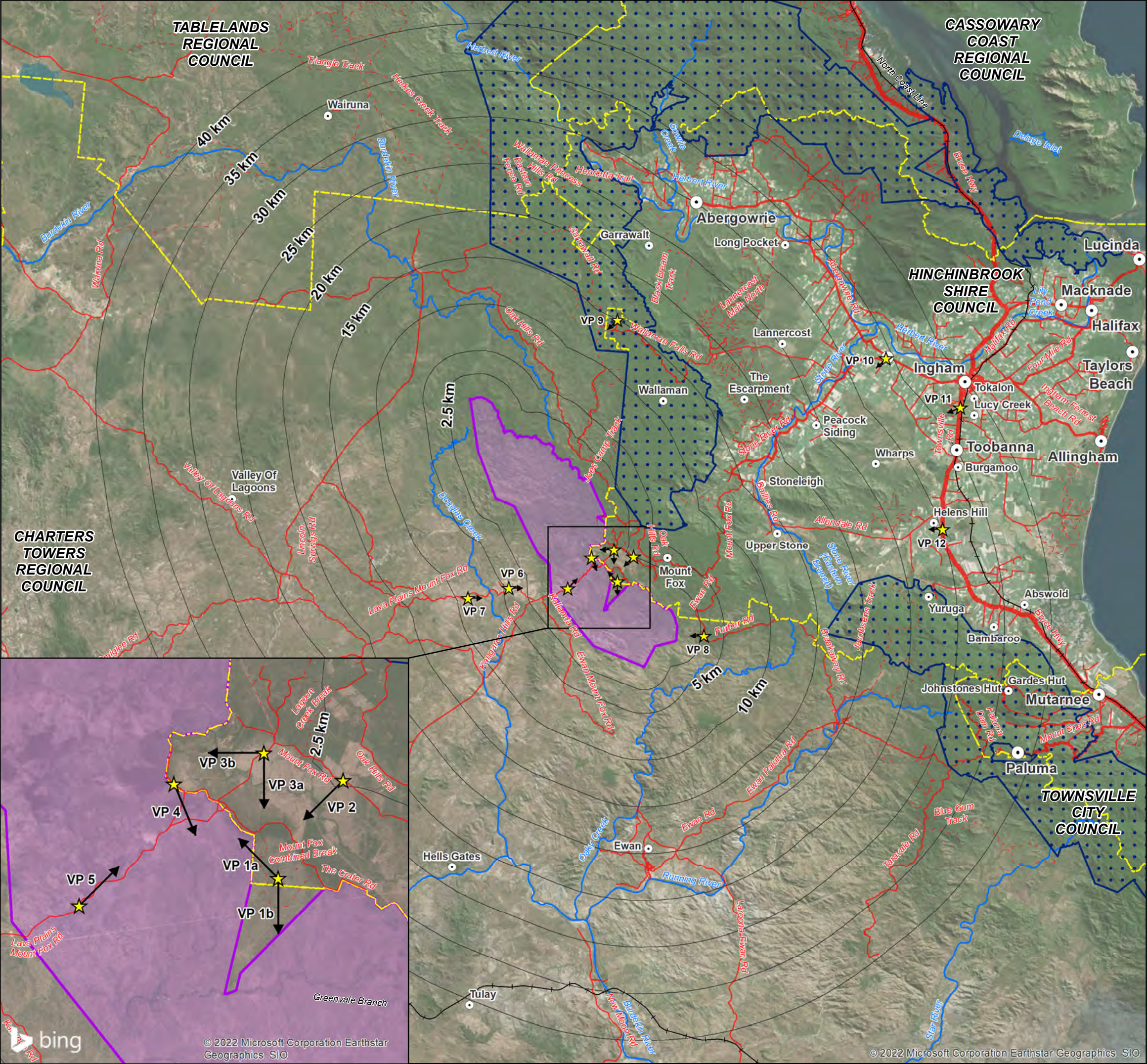
Date Produced: 11/10/2022
Projection: MGA94 Zone 55
Scale at A3 Size 1:400,000



© State of Queensland (DoR) 2022
© Cmwth Dept of Climate Change, Energy,
the Environment and Water 2020

Legend

- ★ Viewpoints
- Lines of Sight from Viewpoints
- Population Centre
- Localities
- Buffers from Upper Burdekin WF Site Boundary
- ▭ Wet Tropics World Heritage Area
- ▭ Local Government Areas
- Rail Network (excluding light rail)
- Highways
- Main Roads
- Minor Roads
- Tracks
- Major Watercourses
- Upper Burdekin WF Site Boundary



Upper Burdekin Wind Farm LVIA

Figure 9: Preliminary Blade Tip
VAM (ZTV) Assessment –
Visual Analysis Map

Date Produced: 11/10/2022
Projection: MGA94 Zone 55
Scale at A3 Size 1:400,000

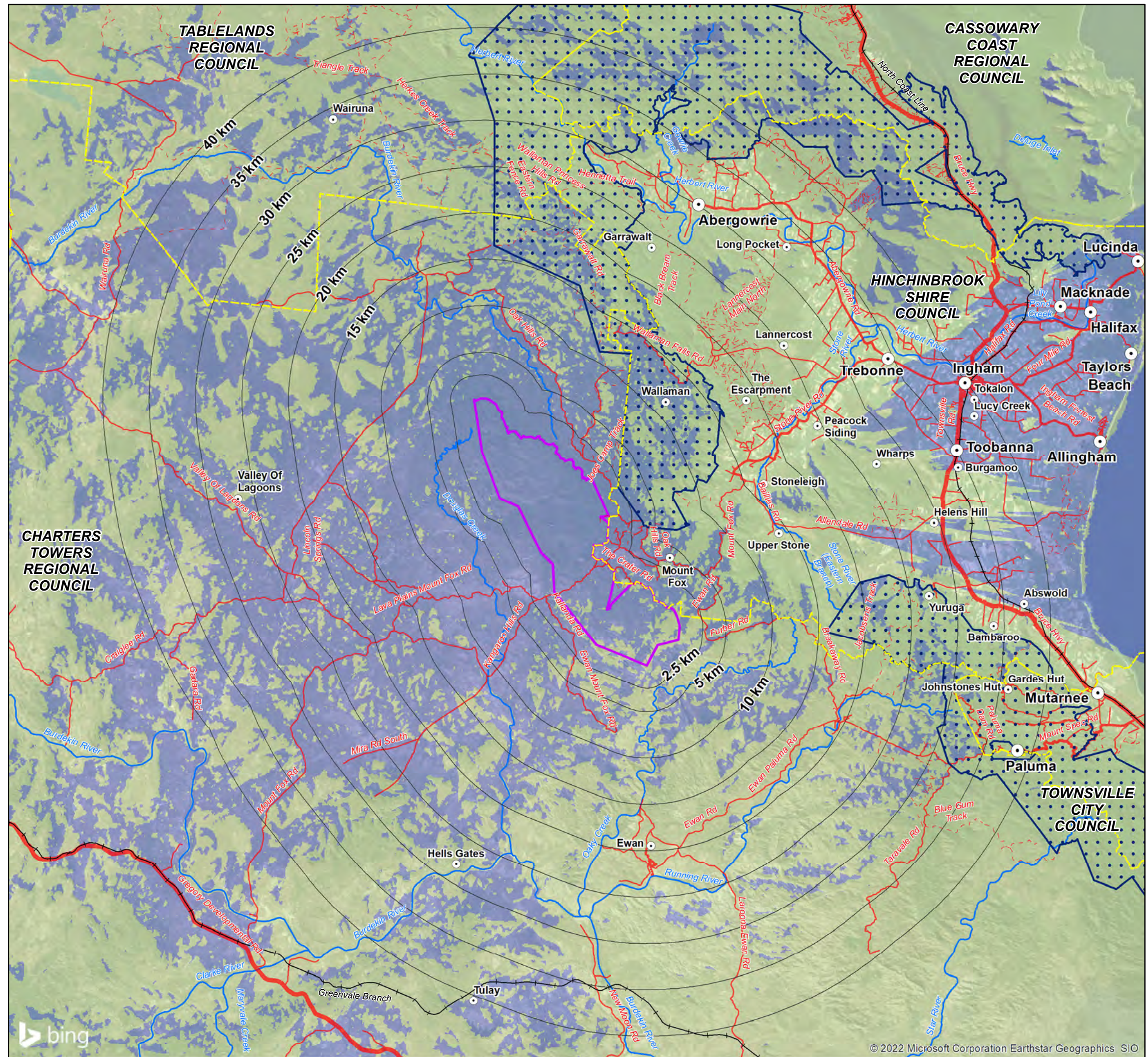


0 5 10 20 Kms

© State of Queensland (DoR) 2022
© Geoscience Australia 2008
© Cmwth Dept of Climate Change, Energy,
the Environment and Water 2020

Legend

- Population Centre
- Localities
- Buffers from Upper Burdekin WF Site Boundary
- Local Government Areas
- Wet Tropics World Heritage Area
- Rail Network (excluding light rail)
- Highways
- Main Roads
- Minor Roads
- Tracks
- Major Watercourses
- Upper Burdekin WF Site Boundary
- Turbine Blade Tips Not Visible
- Turbine Blade Tips Visible



Upper Burdekin Wind Farm LVIA

Figure 10: Preliminary Hub Height
VAM (ZTV) Assessment –
Visual Analysis Map

Date Produced: 11/10/2022
Projection: MGA94 Zone 55
Scale at A3 Size 1:400,000

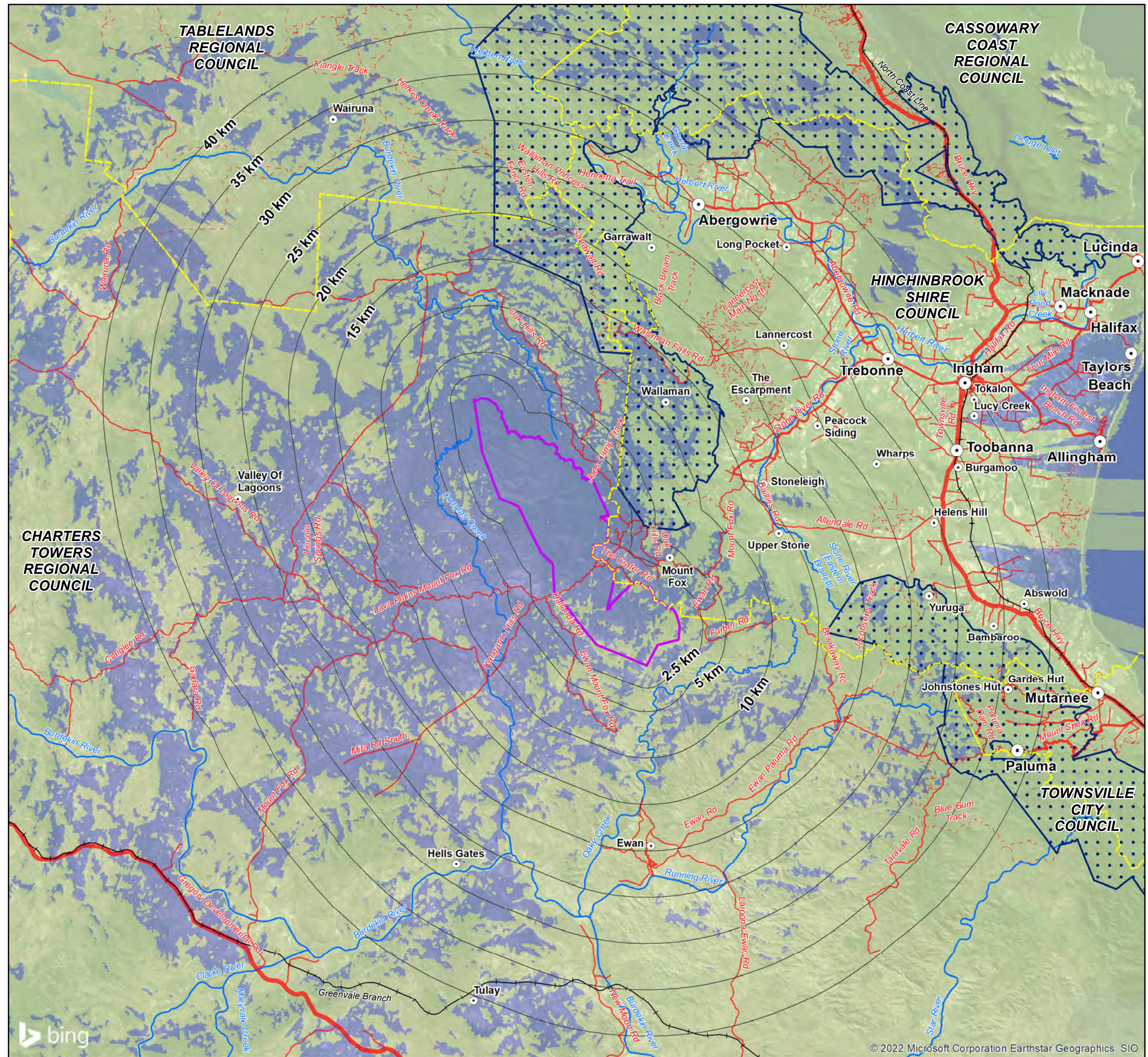


0 5 10 20 Kms

© State of Queensland (DoR) 2022
© Geoscience Australia 2008
© Cmwth Dept of Climate Change, Energy,
the Environment and Water 2020

Legend

- Population Centre
- Localities
- Buffers from Upper Burdekin WF Site Boundary
- Local Government Areas
- Wet Tropics World Heritage Area
- Rail Network (excluding light rail)
- Highways
- Main Roads
- Minor Roads
- Tracks
- Major Watercourses
- Upper Burdekin WF Site Boundary
- Turbine Hub Height Not Visible
- Turbine Hub Height Visible



Upper Burdekin Wind Farm LVIA

Figure 11: Preliminary Blade Tip
VAM (ZTV) Assessment –
Number of Turbines Assessment

Date Produced: 11/10/2022
Projection: MGA94 Zone 55
Scale at A3 Size 1:400,000

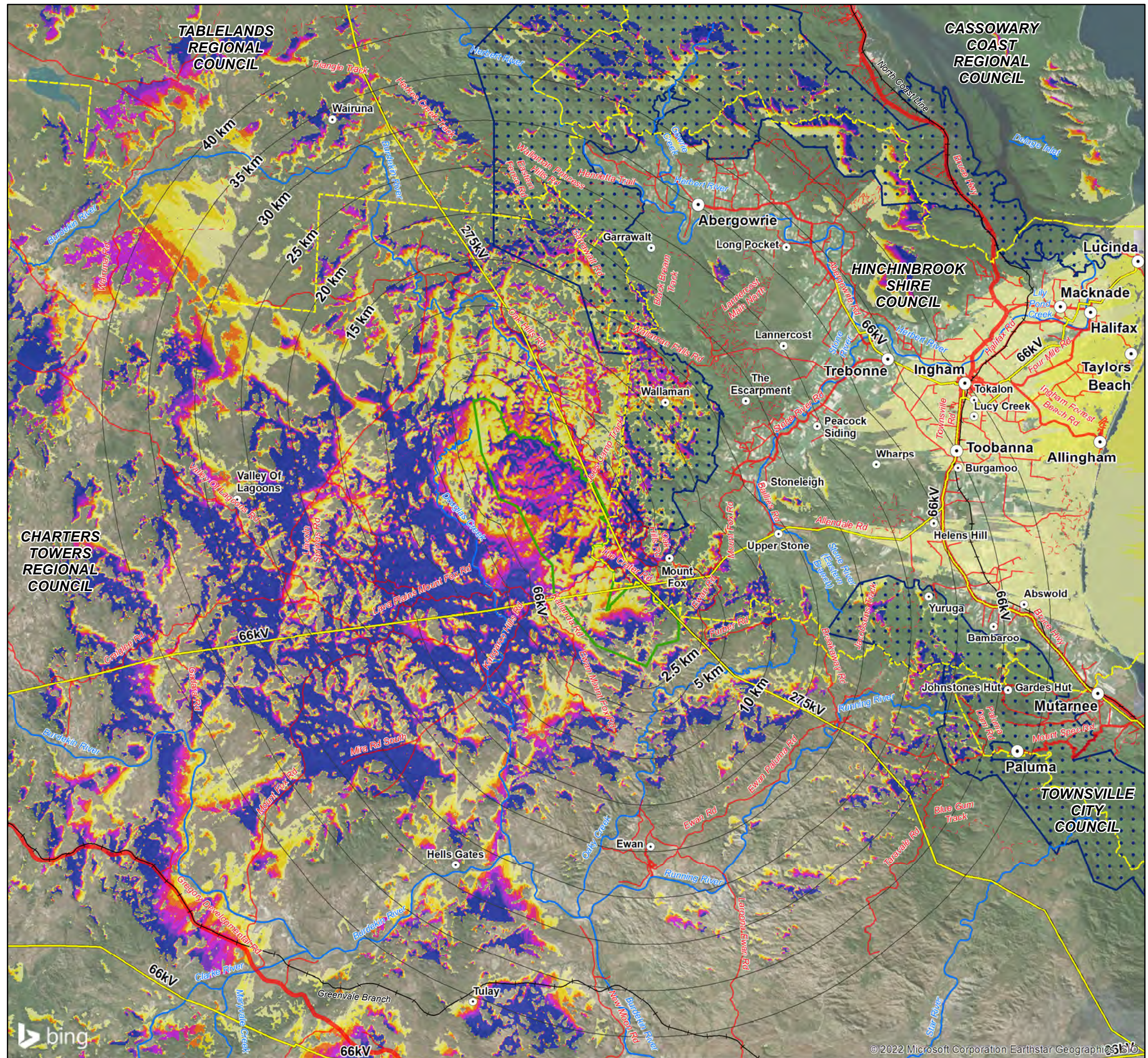


0 5 10 20 Kms

© State of Queensland (DoR) 2022
© Geoscience Australia 2008
© Cmwth Dept of Climate Change, Energy,
the Environment and Water 2020

Legend

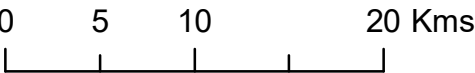
- | | | |
|--|---------------------------------------|----------------------------|
| ● Population Centre | — Rail Network (excluding light rail) | Number of Visible Turbines |
| ○ Localities | — Highways | 1 to 10 |
| — Buffers from Upper Burdekin WF Site Boundary | — Main Roads | 11 to 20 |
| — Existing Overhead Transmission Lines | — Minor Roads | 21 to 30 |
| — Local Government Areas | — Tracks | 31 to 40 |
| | — Major Watercourses | 41 to 50 |
| | — Upper Burdekin WF Site Boundary | 51 to 60 |
| | — Wet Tropics | 61 to 70 |
| | — World Heritage Area | 71 to 80 |



Upper Burdekin Wind Farm LVIA

Figure 12: Preliminary Hub Height
VAM (ZTV) Assessment –
Number of Turbines Assessment

Date Produced: 11/10/2022
Projection: MGA94 Zone 55
Scale at A3 Size 1:400,000



© State of Queensland (DoR) 2022
© Geoscience Australia 2008
© Cmwth Dept of Climate Change, Energy,
the Environment and Water 2020

Legend

- Population Centre
- Localities
- Buffers from Upper Burdekin WF Site Boundary
- Existing Overhead Transmission Lines
- Local Government Areas

- Rail Network (excluding light rail)
- Highways
- Main Roads
- Minor Roads
- Tracks
- Major Watercourses
- Upper Burdekin WF Site Boundary
- Wet Tropics
- World Heritage Area

Number of Visible Turbines

- 1 to 10
- 11 to 20
- 21 to 30
- 31 to 40
- 41 to 50
- 51 to 60
- 61 to 70
- 71 to 80

