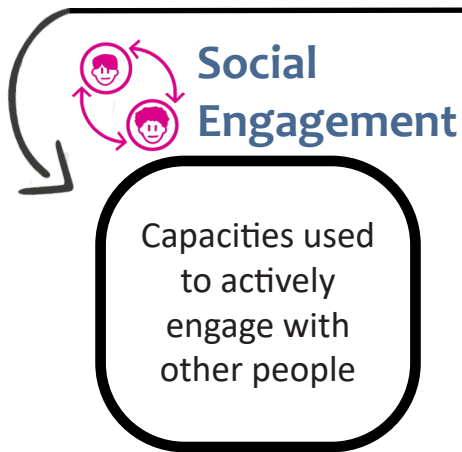




SOCIAL ENGAGEMENT: WHAT IS IT AND WHY DO I CARE?

Although you have probably heard of soft skills, you may be unsure of what they actually are or why they are important. 73% of employers say they are unsatisfied with the level of soft skills in recent graduates and 8 out of the top 10 skills for 2025 are soft skills. Social engagement is a category of soft skills that can make a big difference in your ability to compete for a job, a promotion or admission to a program.

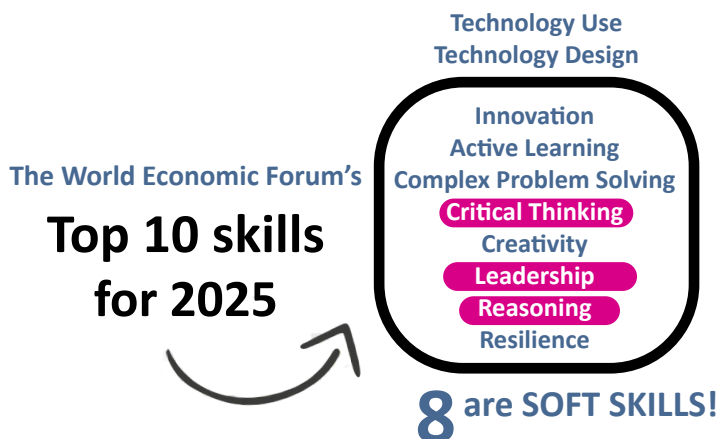


Students with high social engagement skills have many friends and like to talk with classmates. They are very active and lead many school activities.

Leadership Skills	Capacity to assert oneself in a group and speak in public
Conversational Skill	Capacity to talk with others and maintain conversations
Expressive Skill	Capacity to communicate one's thoughts and feelings to other people.
Persuasive Skills	Capacity to make effective arguments and win debates
Energy Regulation	Capacity to channel energy in a productive way

Social engagement is known by many names

Agentic Interpersonal Domains (Taxonomy)
Interpersonal Competencies (21-st Century Competencies)
Interpersonal Strengths (Tripartite Taxonomy of Character)
Connection (Five Cs of Positive Youth Development)
Relationship Skills (CASEL Core Competencies)
Extraversion (Big Five Personality Traits)



Social engagement skills predict enterprising occupational interests, peer acceptance, friendship quality, exercise, and life satisfaction.*

*Soto, C. J., Napolitano, C. M., Sewell, M. N., Yoon, H. J., & Roberts, B. W. (in press). An integrative framework for conceptualizing and assessing social, emotional, and behavioral skills: The BESSI. *Journal of Personality and Social Psychology*.