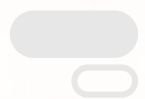




scribbler
Charles Pickering | 2022





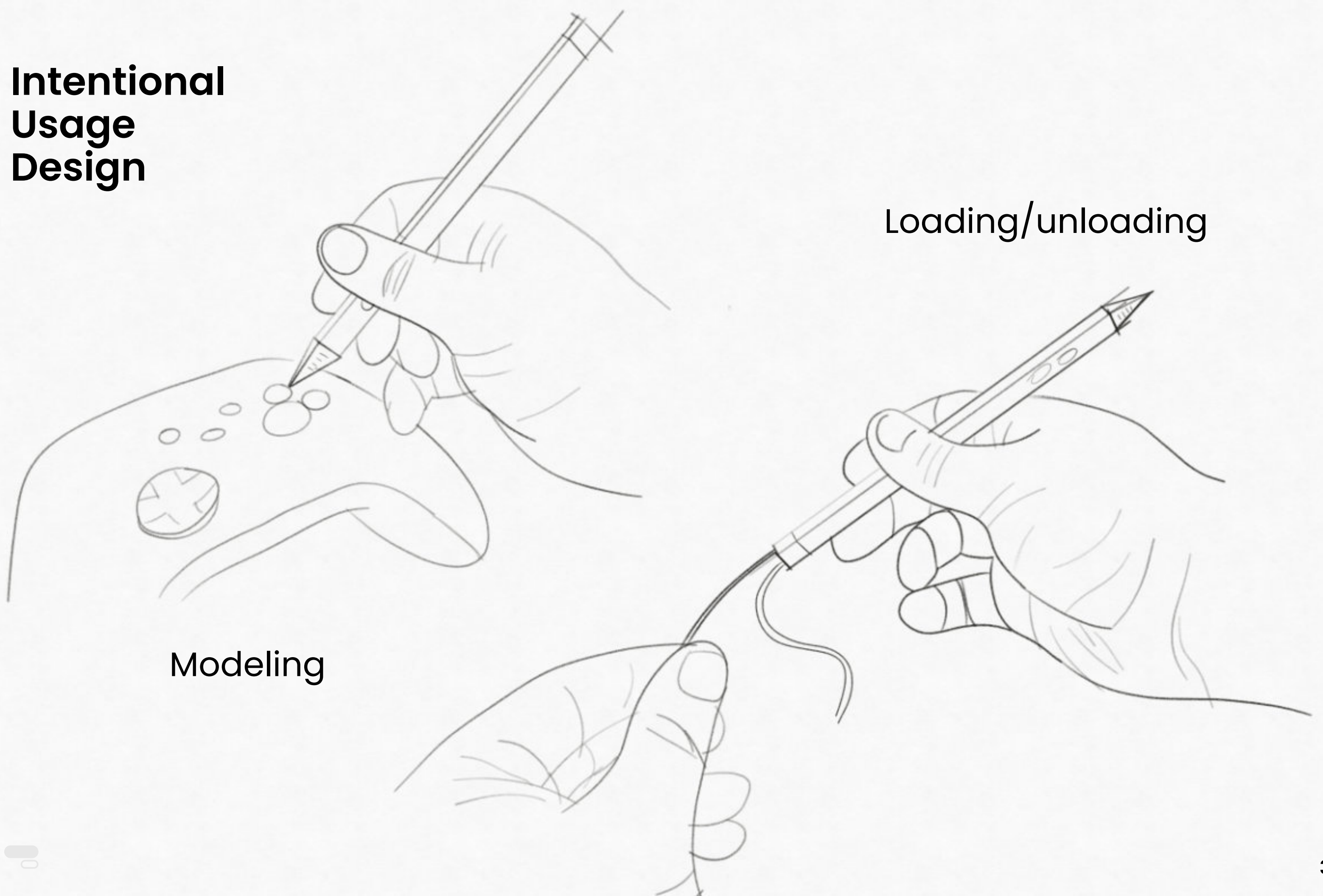
Target Demographic

The Modern Designer

Architect, interior, industrial, civil, or other designer contributing in today's high-paced workflow where visual results are needed quickly, with detail that convinces stakeholders to fund or progress a project. They use this device to produce visual models faster than using conventional methods and current computer modeling techniques, allowing for a free flow of ideas that can be easily acted upon in a collaborative environment. They work at a desk, often sharing an office or other workspace with one or more other people and/or work at home using a kitchen table to conduct their work.

Intentional Usage Design

Loading/unloading



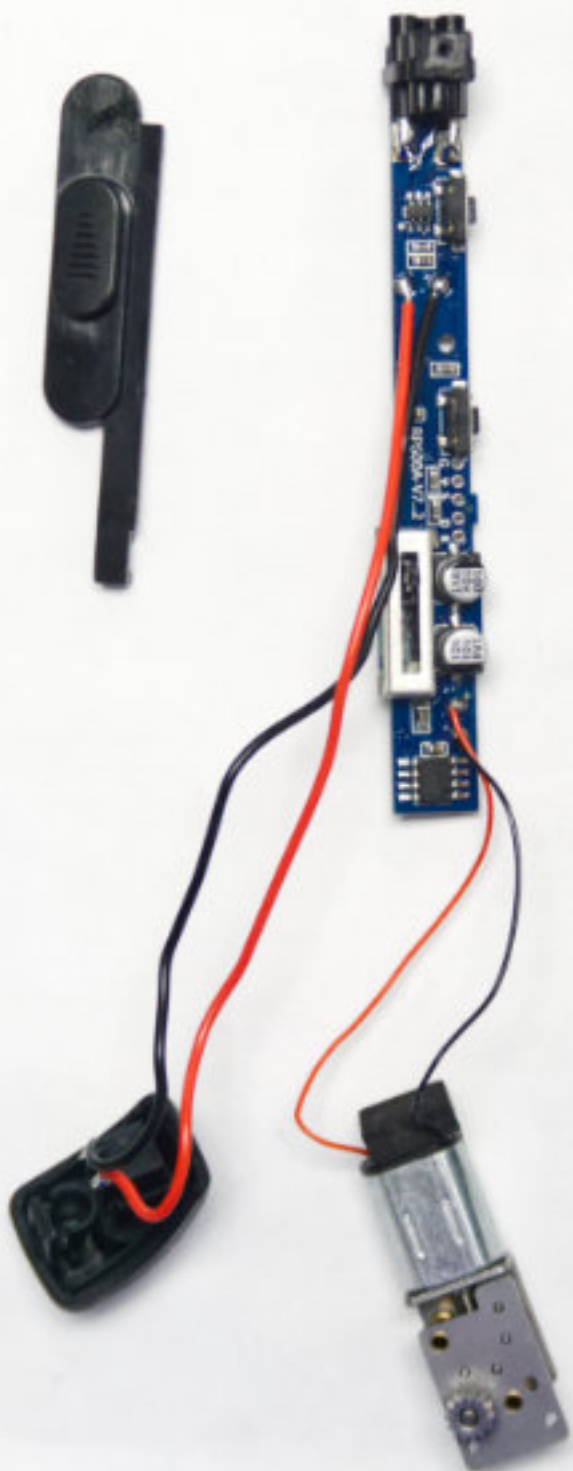


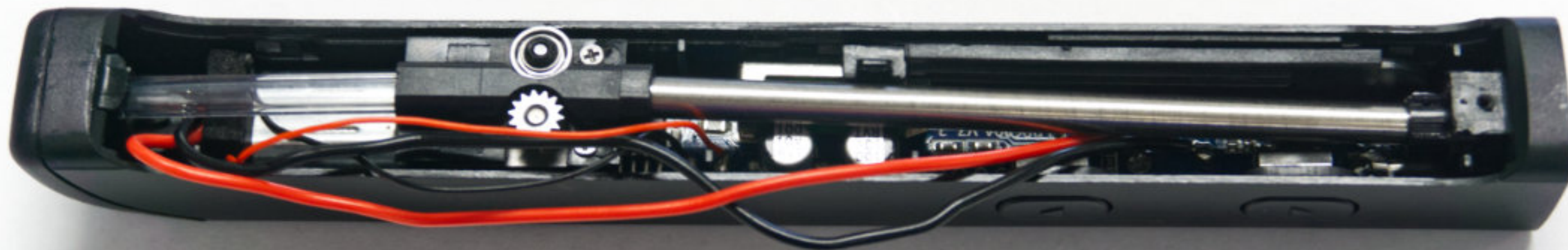
Easily replaceable hotend





100% clip based closure



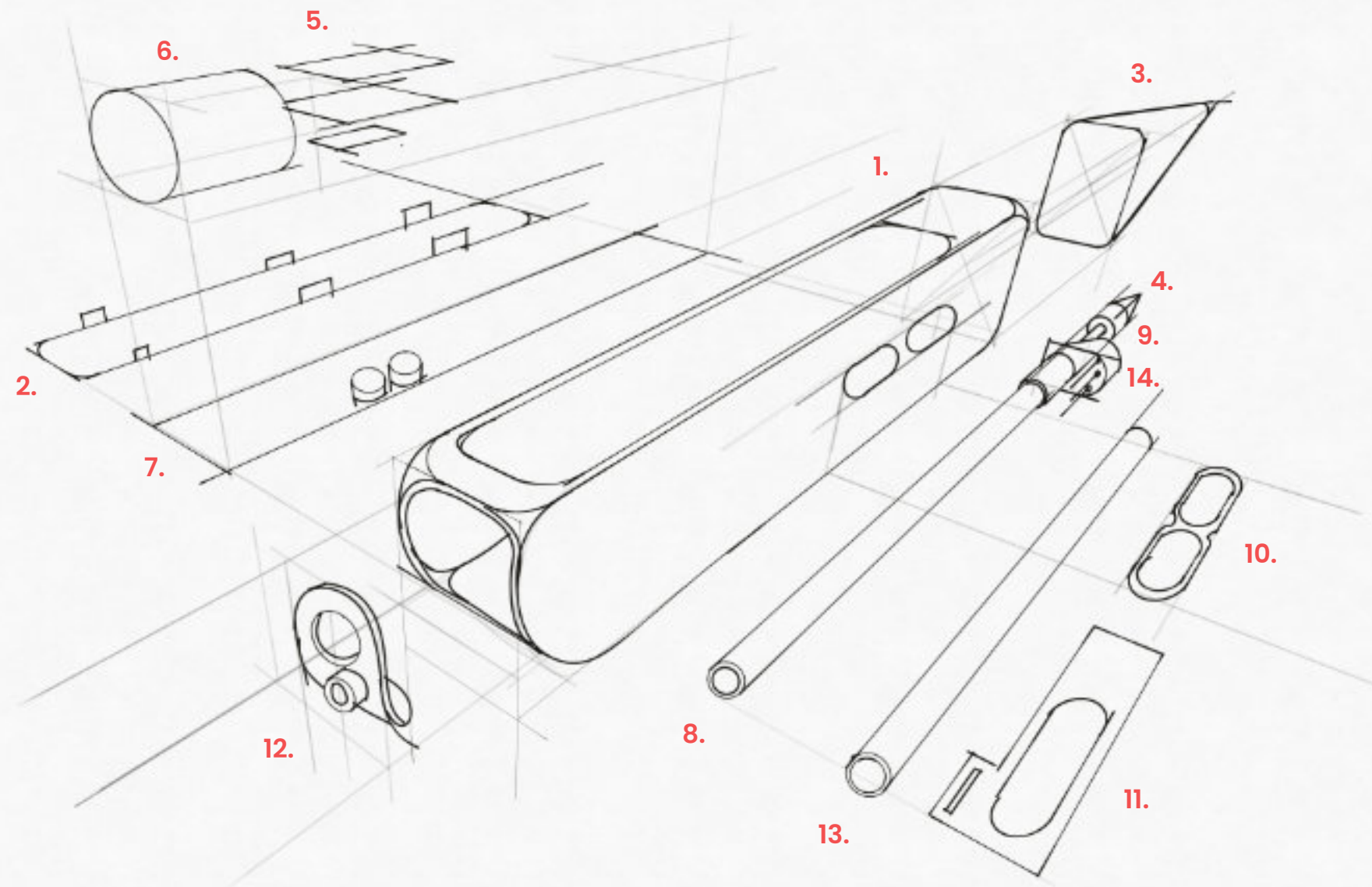




High torque gearbox

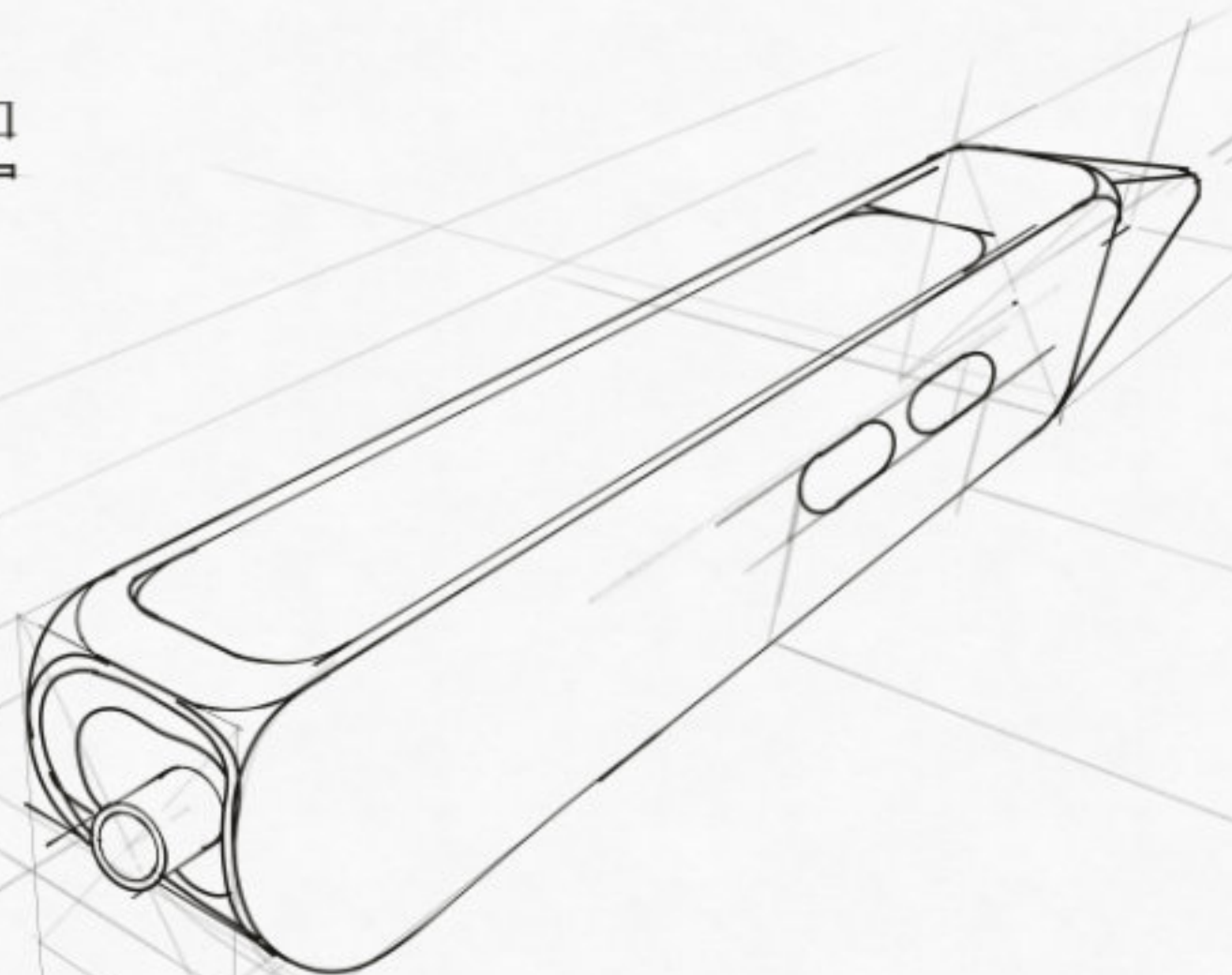
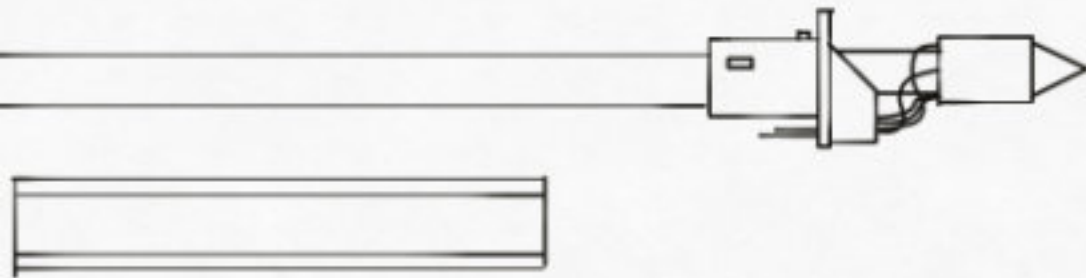
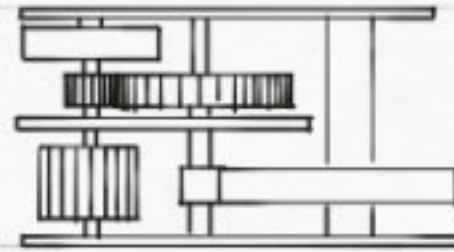
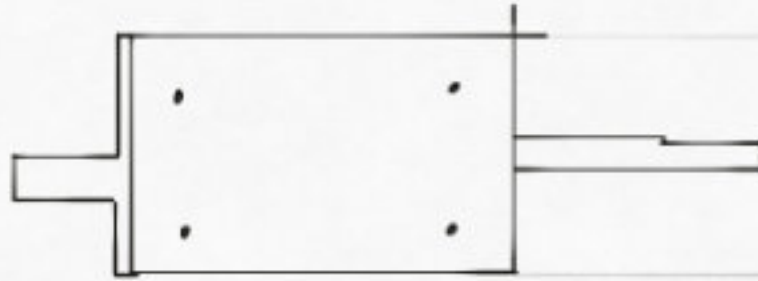
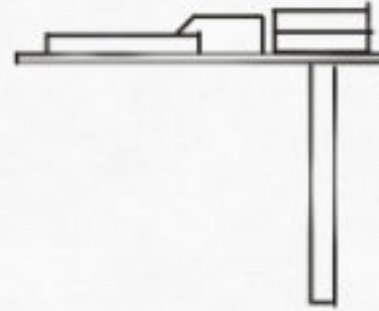
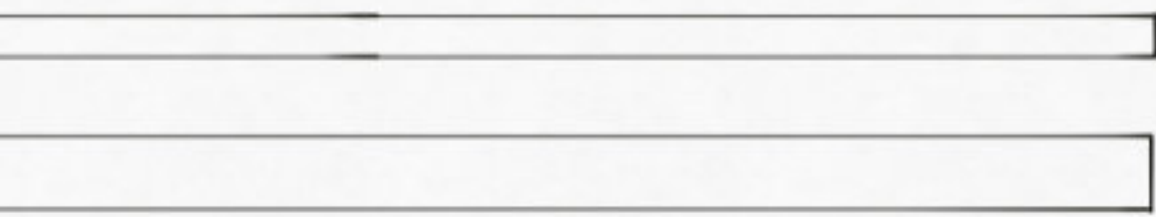


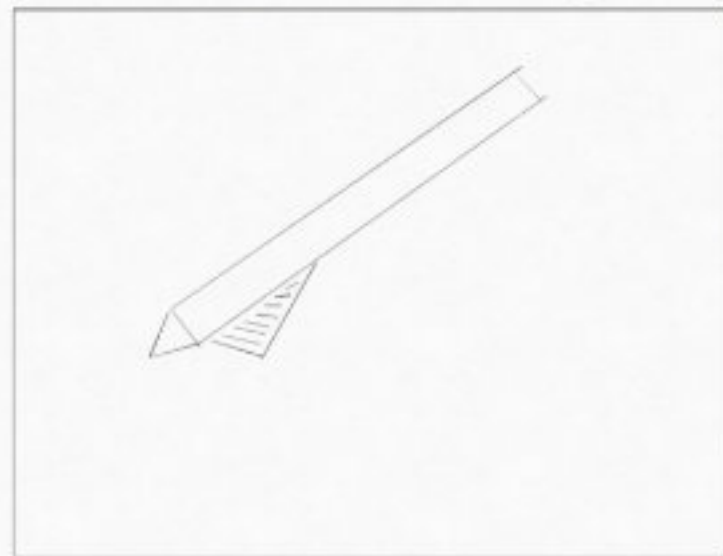
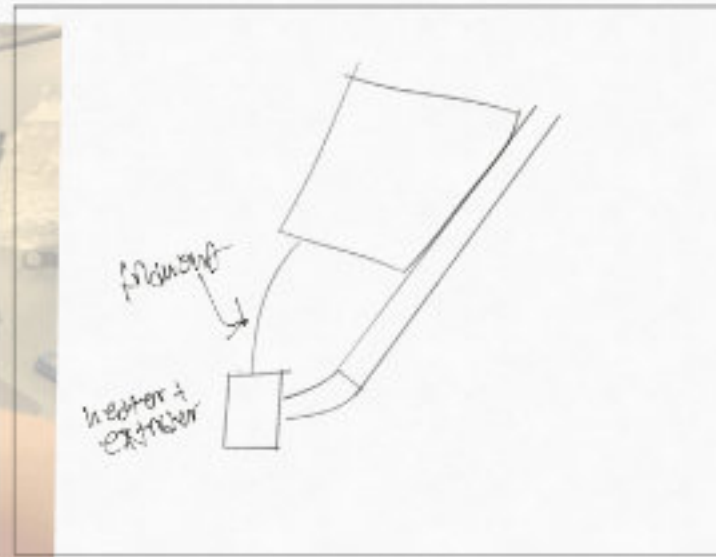
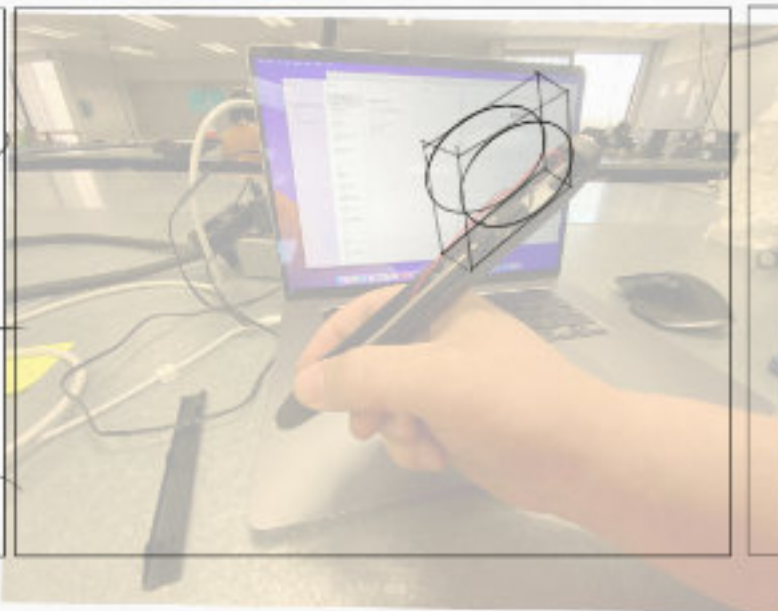
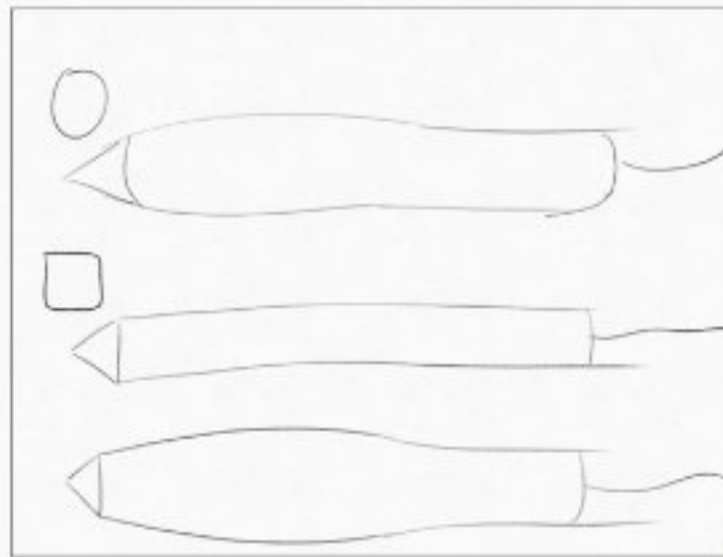
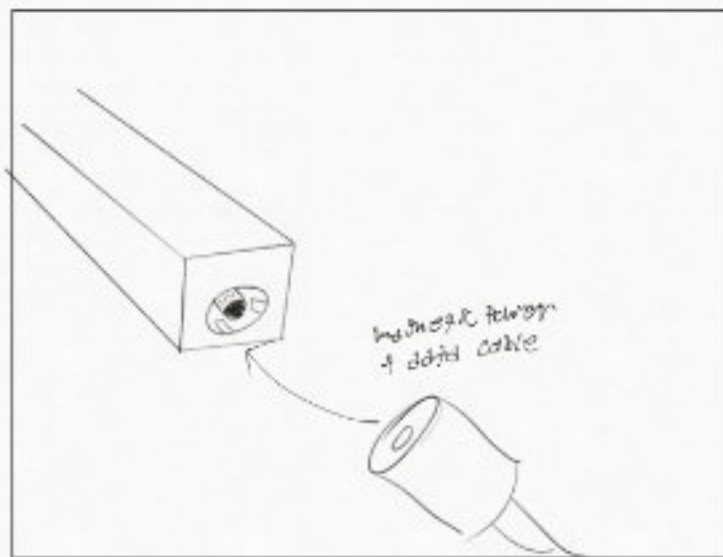
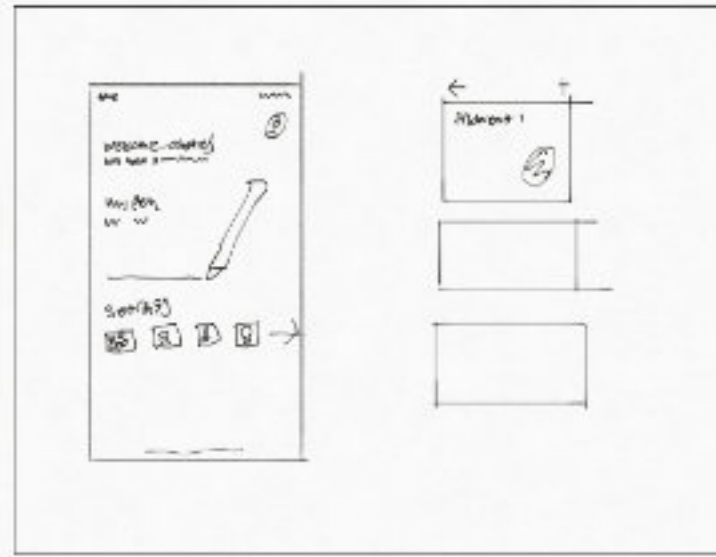
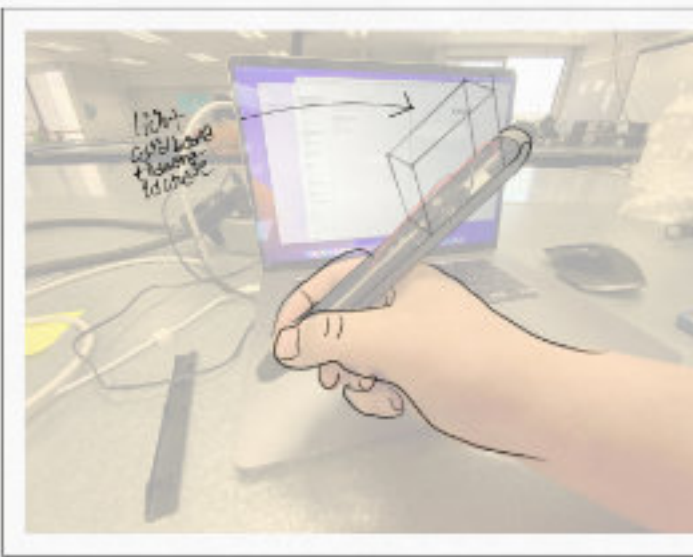
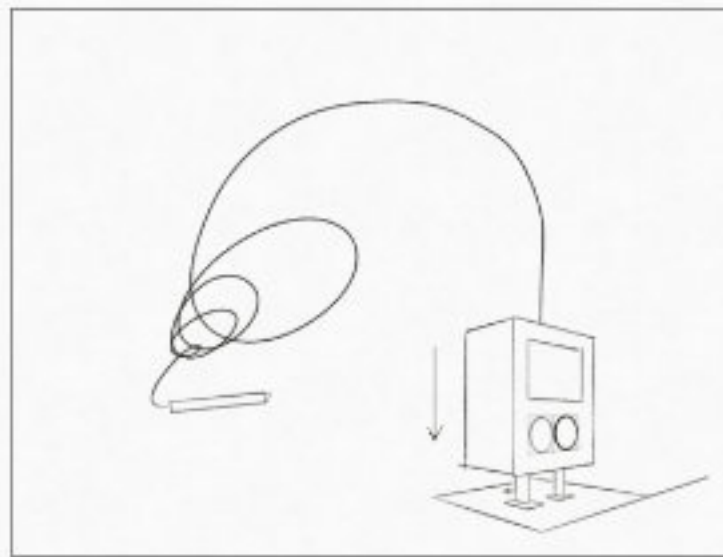
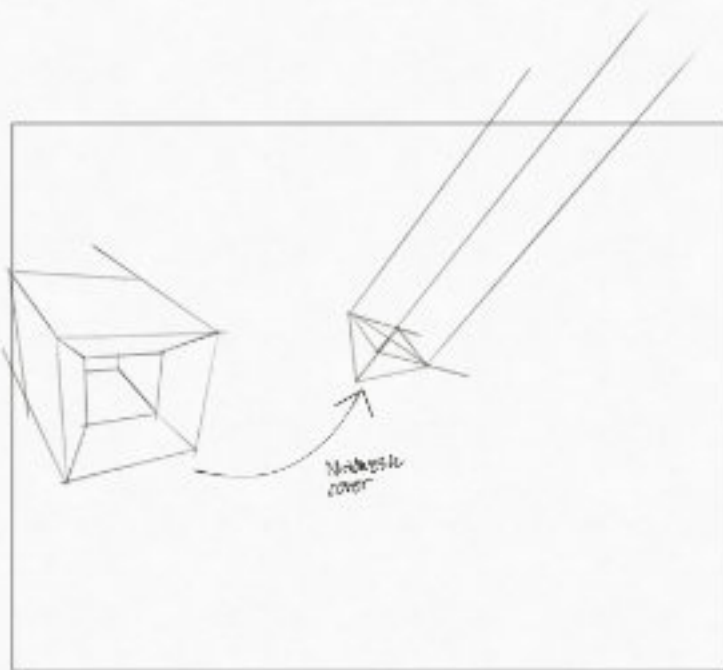
Existing Components

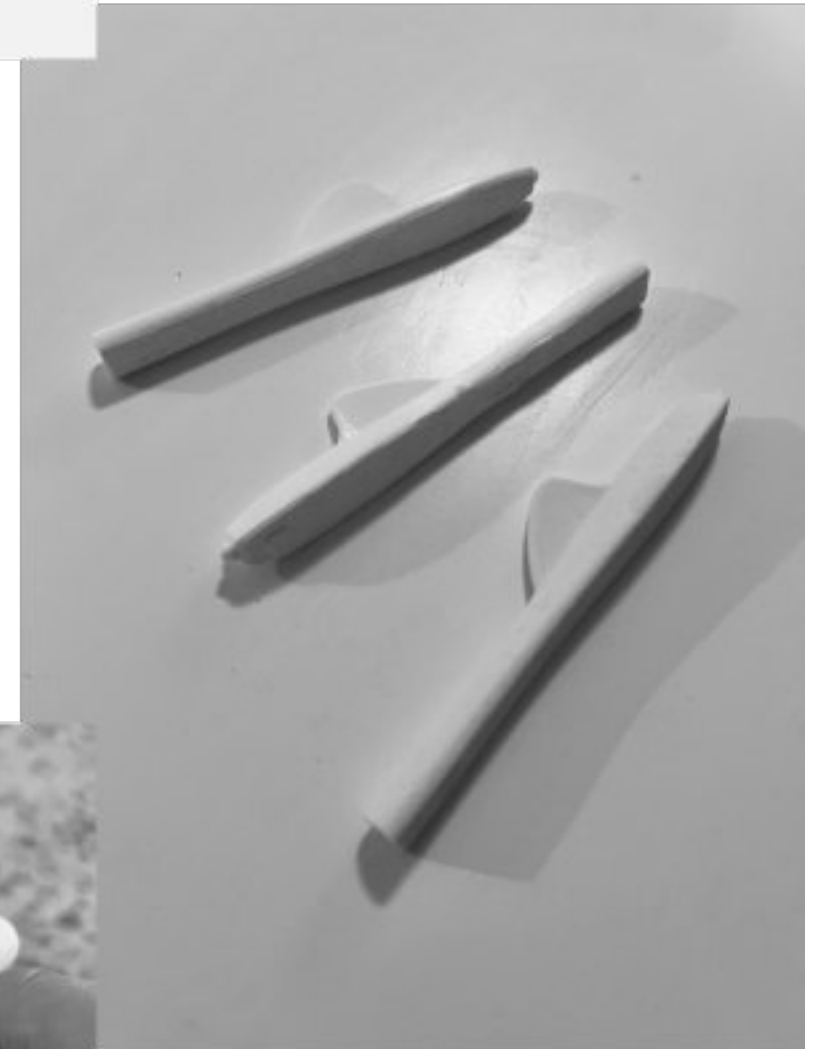
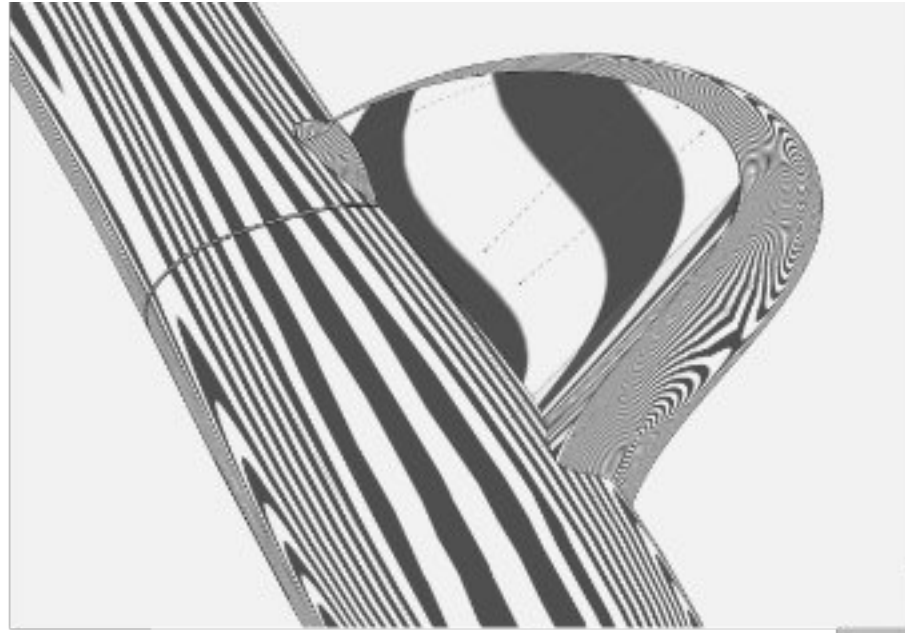
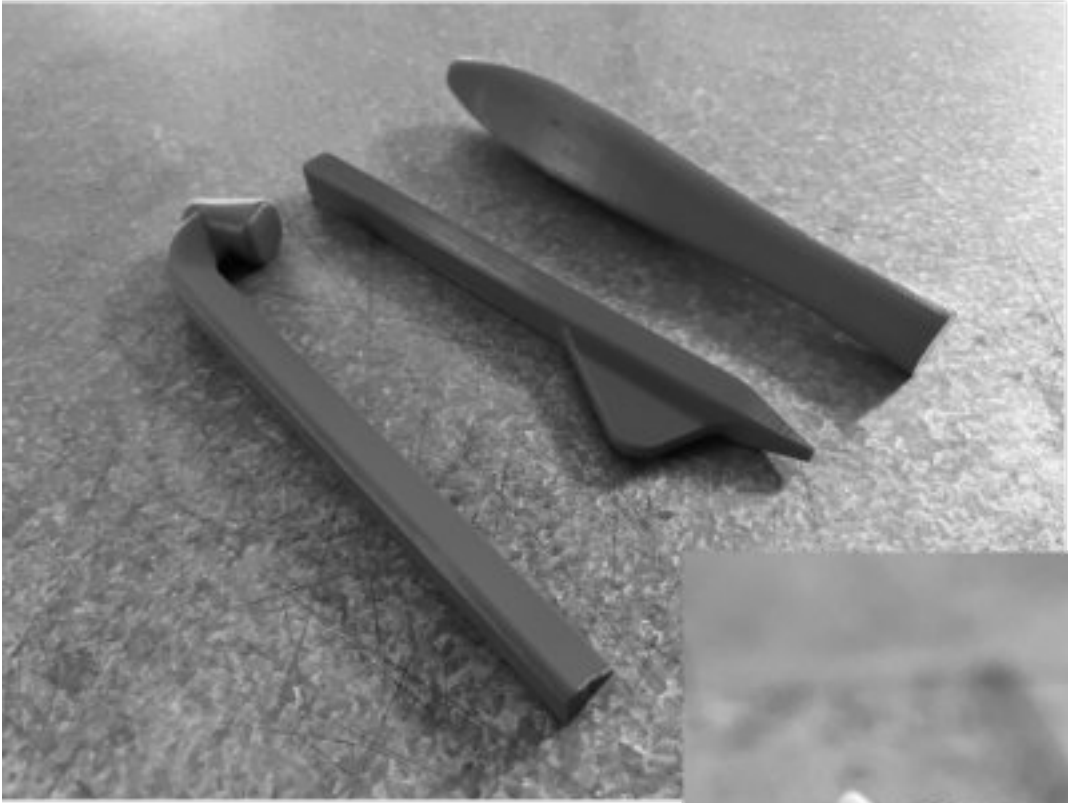


1. Main housing
2. Housing cover
3. Protective tip shroud
4. Nozzle
5. Gearbox
6. Motor
7. Control Board
8. Filament path (removable)
9. Heater
10. Button cap
11. Slider cap
12. Power inlet
13. Filament path (integrated)
14. Hotend assembly quick removal port

Assembly Investigation







scribbller





scribbler

scribbler

scribbler

scribbler

scribbler

scribbler

scribbler

scribbler

scribbler

scribbler

scribbler

scribbler

scribbler

scribbler

scribbler

scribbler

scribbler

scribbler

scribbler

scribbler

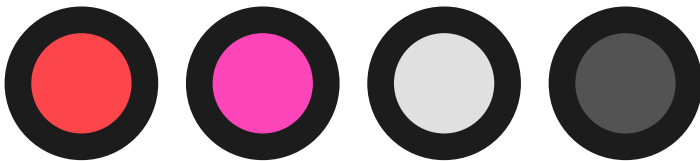
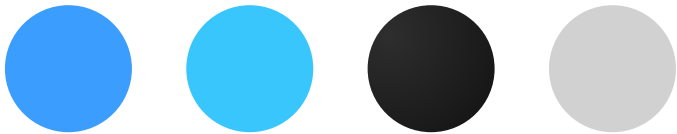
scribbler

Brand Elements

scribbller

Avenir Next Medium

ABCDEFGHIJKLM
NOPQRSTUVWXYZ
abcdefghijklmn
opqrstuvwxyz



scribbller