

# CONTENTS

# THE FIRST YEAR GUIDE 2021

President's Address	3
Starting Uni	4
Science Majors	8
To-Do List	10
Handbook Guide	11
Study Spaces	12
Food and Drinks on Campus	26
Study Tips	28
Meeting New People	31
Getting Involved in Uni	32
About SCISOC	33
Other Science Societies	35
Student Services	42
Map of UNSW	46



# •• president's •• ADDRESS

Hello, and welcome to the UNSW Science Society! Affectionately known as SCISOC, we're the main hub for all science students at UNSW. Whether you're someone who isn't quite sure what to major in, or you're someone looking for career pathways from your science degree, or whether you're just someone who wants to make friends, SCISOC has something for you!



My SCISOC journey began at my first-year camp way back in 2018, and since then I have grown to an executive member and eventually president of the society that I have watched grow alongside myself. Throughout the years, SCISOC has given me a lot, including lots of team and leadership experience to an amazing group of friends that I would not have met if I had not gone to that camp all the way back in 2018. Speaking of first-year camp, our 2021 Orientation Camp is coming up soon which you should definitely come to! As someone who's gone to at least 5 camps in my uni life, I guarantee you amazing memories and lifelong connections with people you'll be with for life. However, camp isn't the only way you can get to know people.

Throughout the year, SCISOC will be holding numerous other social and career events, from smaller barbecues and games nights, to our flagship annual ball and cruise, to a case competition and networking events. As someone who has been through so many different viewpoints of these events, from when I was a first year before even joining the society, to an organisational role in some larger events, I can tell you that SCISOC excels at bringing people together from so many different backgrounds.

2021's only just beginning, so let's make it a good year! As the SCISOC President of 2021, but also as someone who just enjoys meeting new people and seeing them grow, I hope to see you around at our events!

- Nathan Gock-King, 2021 SCISOC President

## ENROLMENTS

Remember to pay your term fees before enrolments close, as you won't be able to enrol for your classes until you pay your fees.

- Term 1 Enrolments close 9th of February
- Term 2 Enrolments close 25th of May
- Term 3 Enrolments close 7th of September
- Enrolments can be accessed on the myUNSW website.
- Go to the student profile page, and on the sidebar, there should be an option to update your enrolment.
- You can actually enrol in all your courses for the current academic year, but you won't be able to timetable your classes until the term before.

## 2021 KEY DATES

**Census dates:** Up until the census date (usually a month into the term), you can drop a course without academic/financial penalties.


- **CENSUS DATE FOR TERM 1: 14th March**
  - **5 April:** Class registration opens, meaning that you can timetable your classes for Term 2
  - **25 May:** If you haven't registered for Term 2 classes by this date, your enrolment in the course will be cancelled
- **CENSUS DATE FOR TERM 2: 27th June**
  - **19 July:** Class registration opens, meaning that you can timetable your classes for Term 3
  - **7 September:** if you haven't registered for Term 3 classes by this date, your enrolment in the course will be cancelled
- **CENSUS DATE FOR TERM 3: 10th October**



# TIMETABLE TIPS

There are other options for timetabling your classes on unofficial UNSW timetable sites:

- **CrossAngles**




When CrossAngles is able to get the information for classes from UNSW, you can enter your classes to the website and timetable them on the site. However, this doesn't register you for your classes and you'll still have to do it on the main UNSW enrolment page, but it's a good method to get an idea of how your classes will be timetabled for the next term. Click **here** to check out this site.

- **Triangles**

While Triangles doesn't allow you to timetable your classes like CrossAngles does, it does allow you to plan your courses for the rest of your degree. It gives you information about each course, such as the prerequisites needed for each course, as well as which terms they run during, which makes the job of planning your degree much easier. Click **here** to check out this site.

If you want to view your timetable throughout the term, an easier way to view it other than logging on to the myUNSW website is to download the UniVerse app, which is UNSW's official app.

- View your timetable whenever and wherever, as well as view where these classes take place on a small virtual map with a location tracker
  - Get notifications for upcoming key dates
  - View your current library standings, such as how many books you've borrowed/requested, and how much you owe to the library in terms of fees
  - You can view upcoming events happening at UNSW
  - There's a lot of other things you can view on this app, so it's well worth downloading
- 

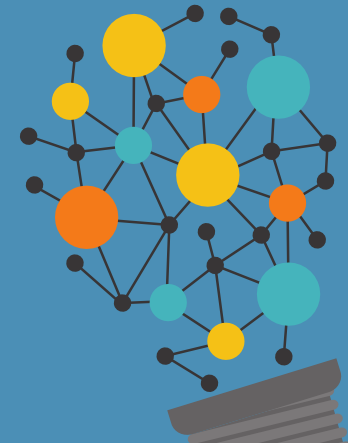
## TEXTBOOKS

Buying textbooks isn't compulsory for all courses, however, if you need to buy a textbook, there are a few ways to purchase one.

- **UNSW Bookshop:** The go-to place to purchase textbooks, course manuals and lab manuals.
- **UNSW Textbook Exchange (Facebook Group):** Join the Facebook Group to buy second-hand textbooks from other students for generally a cheaper price.
- **Student VIP:** Offers discounted textbooks as well. Click **here** to visit their website.
- **Zookai:** Sells and lends both brand-new and second-hand textbooks at decent prices.
- **eBay:** Has affordable new and second textbooks you can purchase.

## LABORATORY

As science students, most students will need a lab coat and safety glasses to be able to attend laboratory classes. This can be purchased at The Grad Shop near the Basser Steps, next to Subway. Remember to bring your lab coat, safety glasses and lab manual to all your lab classes. However, if you ever forget your lab coat, don't fret as they also sell \$3 plastic lab coats for one time use.



# GETTING TO UNI

## Light Rail

- The light rail, L2, from Circular Quay stopping at Chalmers St, Central Station, stops at Gate 9, which is near Wallace Wurth. You can also catch it back towards Central Station.
- Similarly, the light rail, L3, departs from Circular Quay, stopping at Chalmers St, Central stops on Anzac Parade.

## Buses

- Public buses to travel from Central to UNSW:
  - 391, 393, 395, M10 (Stand C, Eddy Avenue), M50, 393 (Stand E, Elizabeth Street), 339 (Foveaux Street)
- Public buses to travel from Town Hall to UNSW:
  - 392, 394, 396, 397, M10, M50, L94

## Parking Spots

- You can find metered parking on campus at the car parks; on lower campus at Gate 14 (Barker St) or upper campus at Gate 11 (Botany St). However, the hourly rate is \$7.50 per hour.
- Need a cheaper rate? Use Share with Oscar, and you can find parking at either car park for only \$4.50 per hour - however, there is a limited number of spots available so book quickly!
- For those with a tight budget looking for free all day parking around campus, be prepared to come in early! If you are prepared to have a 10-minute walk to reach lower campus, then you can park for free on Day Ave at the bottom of Barker St, in the back streets around Kensington Park or the streets behind the NIDA building. Good luck finding a spot!



# SCIENCE MAJORS

## Anatomy

Study of the human body from the arrangement and function of the bones, muscles and internal organs together with their blood.

## Biology

The study of life and living organisms offering expertise in the fields of botany, ecology, marine biology and zoology.

## Chemistry

The study of matter and the chemical reactions between substances. It is also the study of matter composition, structure, and properties. Matter is essentially anything in the world that takes up space and has mass.

## Ecology

Ecology is the study of the relationships between living organisms. Focusing on understanding the vital link between plants and animals and the world around them.

## Genetics

Study of the variation between living things and how it is inherited, also including studies of gene regulation and evolution.

## Marine and Coastal Science

Looks at all aspects of the marine environment, life on the shore and in the oceans and estuaries, and study the structure and topography of the ocean floor.

## Bioinformatics

The development and application of technology found in computer science and statistics to analyse the data of molecular biology.

## Biotechnology

The use of various biological processes to make products such as chemicals, ingredients and materials to support medical and commercial spaces.

## Earth Science

Earth Scientists study the nature and evolution of the structure of our planet, covering everything from fossils to the powerful forces that move continents.

## Food Science

The understanding of fundamental sciences and the application of this knowledge from paddock to plate. The study of production, handling, processing, preservation, distribution and marketing, through to consumption and utilisation.

## Geography

The study of solid earth, which can range from rock formation and fossils to earthquake and tectonic plate behaviour.

## Molecular and Cell Biology

Molecular Biology involves looking into the still unknown inner workings of cells, the building blocks of life.

### Materials Science

The design and discovery of new materials combining chemistry physics, biology with mathematics and the principles of engineering.

### Microbiology

Specific study of the smallest forms of life namely bacteria, viruses, archaea, fungi and protozoa.

### Pathology

Pathology is a scientific discipline which involves the study of diseases, such as infections and cancers, at the genetic, molecular, cellular, and organ levels.

### Physical Oceanography

The study of physical conditions and processes within the oceans by collecting data such as salinity, temperature and the current speed among other things.

### Physiology

Physiology is all about what makes human bodies work - how the organs function, humans grow and develop, humans sustain bodily functions and what happens to these processes during disease and ageing.

### Statistics

The application of mathematical principles to the collection, analysis and presentation of mathematical data, usually related to the "real work".

### Mathematics

Ideal subject for people who enjoy abstract thinking. Mathematics is the study of the relationships between numbers, quantities, and magnitudes.

### Neuroscience

Introducing biological and behavioural aspects of the nervous system to see developments and structure.

### Pharmacology

Pharmacology is the branch of biology is the study of drugs as any man-made, natural, or endogenous molecule which exerts a biochemical or physiological effect on cells.

### Physics

The study of matter, motion and its behaviour through space and time, as well as the related entities of energy and force.

### Psychology

Psychology includes brain-behaviour relationships, the processes of perceiving, learning, memory and thinking, the assessment of abilities and attitudes, and the origins of personality.

### Vision Science

The study of the processes underlying vision as well as the development and use of vision-related technologies.

## TO DO LIST

The transition to university can be very daunting due to all the different moving parts. So, to ease that pressure a little bit, here is a list of all the things you must complete. Note that all these things are mandatory, so try and complete them as early as possible:

#### • ELISE Quiz

- **What:** A mandatory quiz that needs to be completed by all students about plagiarism. Failing to do so will result in being blocked from accessing the UNSW Enrolment Service which will prevent you from enrolling or dropping courses.
- **When:** Before the end of week 3.
- **Where:** The quiz can be found on Moodle.

#### • Calculators approved

- **What:** To use your calculators in UNSW exams or class tests, they must be approved by UNSW first. Note, your calculators will be checked in exams and test by the exam invigilators.
- **When:** Try and get this done as early as possible, so you don't end up on exam day without an approved calculator.
- **Where:** Bring your calculator to The Nucleus: Student Hub or your Faculty's Student Centre where they will place an approval sticker on the back of your calculator.

#### • Pay Student's Services and Amenities Fee

- **What:** Every term, students must pay the Student Services and Amenities Fee for using the campus. The fee for a full-time student is \$104.30 and for a Part-time student, it is \$78.25.
- **When:** This fee needs to be paid before next term's class enrolments begin. Note: the payment may take up to several days to process, so ensure that you pay it significantly earlier than the enrolment date.
- **Where:** This fee can be paid on myUNSW.

## PICKING COURSES

Firstly, there are some things you need to know:

- **Program:** The degree you are studying (e.g. Bachelor of Advanced Science).
- **Course:** The structured class you take, that usually lasts one teaching period (e.g. one trimester), where you hopefully learn things.
- **Core Course:** A compulsory course for the program you are studying. You have to do this.
- **Free Elective:** A course either from the science faculty, or any faculty at UNSW. If you do a dual degree, no free electives for you.
- **Science Elective:** A course from within the science faculty. These are defined in the UNSW Handbook.
- **General Education (GE):** If you're doing a single degree program you get the chance to pick some general education courses, lucky you! This is an opportunity to complete a course outside of your study area or faculty. If you study science, any course defined as a Science course or a GENS course cannot be taken as a GE.

## UNSW Handbook - Your best friend.

The UNSW Handbook is useful for figuring out what you even need to do. Remember to refer to the handbook edition from the year you started studying at UNSW. Here you can find your program structure, what core courses you need to take, as well as major options, and information regarding Honours.

You can also find sample programs from your program page on the UNSW Handbook, under "Sample Programs". These can also be found on the Undergraduate Degree Templates page. Scroll down to find your program, commencement year, and click your chosen major. The most useful document in your entire academic career will appear, blessing you with your program structure, including core courses, science electives, free electives, and general education courses.

The UNSW Handbook is also the best place to find the perfect General Education course. Search by "area of interest", "faculty" or "subject area". A gen-ed is exactly what it says on the tin, a chance to educate yourself more generally, rather than being locked into your faculty. This is your chance to dabble in art theory, languages, anthropology, or anything that might interest you.

## Progression Checks

The progression check is a holy grail of confirming whether or not you are on the right track. You can access these from The Nucleus Student Hub, where you can search "Academic Progression and Progression Checks" to then request a progression check. Within a few days, you will be blessed with an email outlining what courses you need to take to complete your program. This is also a great opportunity to check whether your chosen electives and GE courses are applicable to your program completion.

## WAM and WAM Boosting

Your Weighted Average Mark (WAM) is a score assigned to you, calculated by taking your scores from every subject you've completed thus far and averaging them. While a high WAM is not necessary for graduating from university, it can be helpful while applying to jobs. In order to pursue higher education (for example, a Masters or an Honours degree), these degrees will require a certain WAM.

If you ever find your WAM dropping uncomfortably low, there are courses available known fondly to students as 'WAM boosters'. WAM boosters are courses where you can get a high mark (thus raising your WAM) without having to put in as much effort. More information on which courses are WAM boosters can be found in either the [Facebook UNSW Discussion Group](#) or the [UNSW subreddit](#).

# ABOUT SCISOC

The UNSW Science Society is built by students for students apart of the science faculty. With events and workshops giving you the chance to develop socially, academically, and professionally, SCISOC supports the growth of every science student and draws strength from diversity.

At SCISOC we endeavor to cultivate tomorrow's future scientists and give every student the chance to reap the full benefits of university life. Whether it's connecting and collaborating with other societies or leading companies, the UNSW Science Society gives students the opportunity to meet and network with students outside of the lecture hall.

With our members encompassing a wide range of degrees and disciplines, including Engineering, Commerce, Law and Arts in addition to Science, SCISOC puts students first to achieve our mission.

# SCISOC BALL

Lights, camera, action! Our annual end-of-year ball is, by far, the highlight of the year; an experience like no other. Dance the night away in fancy dresses and suits, and capture those incredible moments you make with you and your friends you have made throughout the year.



# SCISOC CRUISE

Another one of our large flagship events, the SCISOC Cruise, is not something to miss out on! Spend a night partying away with your friends on a fancy cruise ship, and get ready to live your ocean-side dreams as you make memories to last a lifetime!



# ORIENTATION CAMP

What easier way to make friends than to go to SCISOC orientation camp? It is the golden opportunity to make life-long friends who could be sharing the same tutorials and lectures with you. You don't want to miss these 3 days and 2 nights of partying, team challenges and DnMs; they will be the most memorable experiences you will ever have!



## Careers

The careers portfolio liaises with industry professionals to deliver high quality events for our student base. This portfolio refines and caters to sponsors and their requests, drafts correspondence and reaches out to potential partners. Generally, the externals team actively seeks out relevant career, educational and networking opportunities including collaborations with external parties, sponsorships and educational events.

## Socials

The socials portfolio (previously 'events') aim to plan, develop and run SCISOC events within a team atmosphere by taking initiative to research, plan and book suitable venues, ensuring availability of required equipment and personnel. These events include but are not limited to: camp, cruise, ball and pub crawl.

## Digital Media

The Digital Media portfolio is responsible for managing all the digital content for SCISOC, including photography and videography. This portfolio coordinates event photography, photo and video editing for promotional material and produces drafts, shorts and other visual mediums.

## Finance

The Finance portfolio is responsible for regularly tracking debits and credits and editing the general ledger. They create ticketing systems and organise balance sheets and income statements in order for SCISOC events to run smoothly and efficiently.

# Portfolios in SCISOC

## Marketing

The marketing portfolio designs materials and graphs to market events. These materials include but are not limited to event graphics, merchandise, event pages, cover photos, videos and marketing captions for verbal and virtual communications to promote and capture student's attention.

## Human Resources

The Human Resources portfolio is in charge of organising internal bonding events and workshops. This portfolio assists all members with development and well-being to promote good team culture, so as to ensure a healthy and functional committee.

## IT/Publications

The IT/Publications portfolio manages and designs the SCISOC website and creates fortnightly newsletters to send updates, upcoming events and more to all members of SCISOC. This portfolio team organises the mailing list to facilitate newsletters and emails. Additionally, they produce careers-related and student-catered publications for a wide range of Science students.

# INTERVIEWS WITH THE COMMITTEE

---

Vice President of Externals  
Vice President of Marketing  
Vice President of IT/Publications  
Vice President of Socials  
Vice President of Digital Media  
Secretary  
Treasurer

---



## Secretary KEIRAN PHILLIPS

### What do you do in your role?

As Secretary I often find myself doing the internal 'admin' work of SCISOC. My Human Resources team and I organise everything from Group Chat creation, meeting scheduling and internal events.

In HR we strive to make everyone else's life in SCISOC easier. We reduce stress by minimising the potential friction between teammates. And we do this in every way we can. Subcommittee members will often find themselves onboarded with many other members. The bigger our team is the more important our subcommittee team is. So you'll assist in not only the planning of internal events but also running them and making sure everyone feels included.

### What is your personal experience with SCISOC?

As social as I thought I was before SCISOC, SCISOC helped me find friends that I really loved. Friends that were as passionate about making fun moments for Science students at UNSW as I was.

The entire time I worked in SCISOC I was developing valuable and marketable skills, while getting to spend time with friends and create the best memories uni has to offer.

All the professional bonuses I didn't even consider until later. I found myself doing work and interacting with companies that I never would have without SCISOC. SCISOC very quickly became my gateway for employability and has set me apart in interviews so I can chase my dreams.

### Tell us about yourself! What do you do in your spare time?

Between SCISOC, work and academics I don't find myself with a marvelous amount of free time. However everyone in my team knows about my passions for cooking, sleepovers and heading to the beach. My ideal evening would be a lazy night of cooking dinner then eating it in sleeping bags in front of the tv. Then waking up for a sunrise paddle at Coogee beach.

Vice President of Socials

# RAINBO TSUI

## What does your role entail?

My role as Vice President of Socials entails creating big-scale events like camps and cruises to mini weekly events like movie and games night. Some important elements that must be considered in planning runsheets are figuring out the logistics of the event and how the event is to be marketed. As the head of this portfolio, I also have to liaise with external parties for contract negotiations and external societies for possible event collaboration and report to the executive team about weekly updates. Furthermore, guidance and mentoring are offered to social directors on how to look after their team of subcommittees. Social Subcommittee members are usually given the responsibility for social event creation and mc/hosting of these events.

## Tell us about yourself!

I am someone who likes to experience new things out of my comfort zone, so I occasionally dive into the world of DIYs. This especially held true during covid where I had an excess amount of time! Some DIYs I had done included purchasing some gel nail polish and a UV lamp to do my own nails. I visited the world of carpentry and made a new bedside lamp with an embroidered lamp shade. My fascination with cooking (I can't cook but...) lead me to making 100 hour brownies by following a tutorial on youtube. I also love to sing so I bought portable karaoke microphones so I can karaoke in my room and started learning how to use a DAW to produce some sick beats.

## What is your own experience with SCISOC?

My previous exposure to SCISOC was joining a couple of their food social events after my friend's recommendation. My love for the SCISOC culture and will to meet new people had fuelled my ambition to challenge myself and apply for 2020 events director the following year. Little did I know I was fit for the position and had experienced many unexpected challenges e.g. COVID hit and all social events had to be moved to the online discord platform, the cancellation of flagship events despite long hours of work. However, I had also experienced many good experiences e.g. bonding with other members of my team, developing my professional skills. My joy in helping make this society bigger and better was the reason for me to stay in this team for 2021 as the Vice President of Socials.

## What does your role entail?

As Treasurer my role encompasses a wide variety of responsibilities. This includes budgeting, tracking financial documents and payments, being the first point of contact for most financial matters but most importantly overseeing financial accountability in the society. This role requires me to be heavily involved in various aspects of all the portfolios in the society, making sure every decision we make financially, whether it's regarding an event, or products we purchase is an effective investment for the society. Since financial management is such a crucial element of the job, subcommittee members in the finance portfolio, usually learn to manage financial documents and an understanding of transactional paperwork that an organisation usually has to file, as well as an introduction to budgetary decisions.

## What is your own experience with SCISOC?

I can wholeheartedly say that SCISOC has been a major part of my personal growth in 2020. Whether its helping organise events, or simply just participating in them, SCISOC went beyond just keeping me occupied and entertained, I learnt so much through all the kindhearted and interesting people I met along the way. Subcommittee has truly helped me find some of my closest friends, cultivate an assortment of leadership skills and values, and most importantly made me happy. Joining a uni society helps any student transition into the university backdrop with more ease, so why not join one of the best?

## Tell us about yourself!

1. LOVE. READING. As nerdy as it sounds, a good book and a very sweet coffee is the perfect evening. My Recommendations for the month:  
1. Such a Fun Age by Kiley Reid - A young black woman is accused of kidnapping while babysitting for a white family  
2. The Magisterium Series- Harry Potter with disability representation!  
3. The Song of Achilles by Madeline Miller- geek mytholgy but add a little bit of angst and LGBTQ+ elements to it.  
4. Get your Sh\*t Together by Sarah Knight- unlike most self-help psychology books (and trust me as a psych student, I've read almost half the shelf) this one is a bit more realistic, conversational and accurately captures the anxious mind. Enjoy non-chemical forms of escapism lovelies! I hope to see you around this year at SCISOC or even just around uni!

# Treasurer MADHU SENTHILKUMAR

# AILEEN HEAL

## VICE PRESIDENT OF DIGITAL MEDIA

### What does your role entail?

As Vice President of Digital Media, I manage the Digital Media portfolio that is responsible for all the photography and videography for SCISOC. This includes recording memories from all our events, especially our popular Orientation Camp, so we can highlight the value our events bring to science students. Digital Media is also a brand-new portfolio in 2021, alongside our new YouTube channel, where we will share engaging videos to guide you through your university life, as well as some behind-the-scenes content so you can sneak a peek into the workings of SCISOC. I can't wait to introduce new members to our Digital Media subcommittee this year so we can create more amazing content for our students!

### Tell us about yourself!

All of my hobbies revolve around creativity and self-improvement. Although I can barely scavenge enough spare time around University and work commitments, I try my best to expand my horizons. I enjoy consuming self-help books and podcasts, collecting a variety of art books, as well as drawing and painting. I try my best to visit every new art exhibition, go on walks, and trying cafe foods that are more appealing to the eye than the palette. Essentially, anything to escape from my deadlines.

### What is your personal experience with SCISOC?

My first experience with SCISOC was attending the Orientation Camp 2018. It was honestly the best experience of my entire university life, where I met nearly all the friends I still cherish today. Attending SCISOC events throughout the years has always left me with great memories, and new connections. In 2020, I was encouraged to join Camp again as a Camp Leader, and I am grateful for that opportunity as that was my gateway to joining SCISOC as a subcommittee member that same year. Joining SCISOC has been a great way for me to meet new people, challenge myself, and learn new skills in a supportive environment. If you are looking for a sign to step out of your comfort zone: this is it!

### What does your role entail?

I'm the Vice President of IT/Publications, and with that role comes quite a few responsibilities! The most important responsibility is the management of the Publications/IT portfolio, who're in charge of all things Publications or IT related. In the Pubs/IT portfolio, we ensure that the SCISOC newsletter is delivered on a fortnightly schedule, with each edition bringing in new and exciting content for our audience. We as a portfolio also manage the UNSW SCISOC website, ensuring its functionality as a website and keeping it up to date with all of SCISOC's latest events. On there, you can also find publications the Pubs/IT portfolio has published over the years, all of them catering to many students' interests!

# SYLVAN TAM

## VICE PRESIDENT OF IT/PUBLICATIONS

### Tell us a bit about yourself! What are your hobbies and what do you do in your spare time?

1. I'm probably one of the most introverted extroverts you'll ever meet.
2. I own about 8 different Twitter accounts, most of which I'm not actually active on, and more than a couple I'm ashamed to have ever used.
3. I have an addiction to the dumb block game known as Minecraft.
4. I've gained somewhat of a reputation for having what is quite possibly the worst sleep schedule ever (for example, I can't remember the last time I slept before 7am. My business hours are between 8pm-7am)
5. The amount of times I've been mistaken for an American exchange student is way too high for somebody who's never been anywhere near the Americas.

### What is your personal experience with SCISOC?

My experience with SCISOC began in 2020, when I was nothing but a meek first year, eager to see what the bizarre world of 'university' had to offer. Then, lockdown began and I resigned myself to a quiet, friendless and utterly boring first year. That all changed when I made it into the SCISOC subcommittee. Here, I was able to fit seamlessly into a community full of people who were passionate and dedicated to the work they did for SCISOC, and here, I met a group of people I know I'll call my friends for many years to come. Being in SCISOC taught me many skills I know will come in handy in the future, and it made sure my year never had a dull moment.

# JASON TAN

VICE PRESIDENT OF MARKETING

## What is your role and what does it entail?

As the Vice-President of Marketing, I'm basically in charge of SCISOC's branding and how we present ourselves to the wider community! Whether this be managing our social media accounts, creating and designing graphics for events and initiatives, being in the Marketing Team allows me, as well as my directors (and future subcommittee!) to find a creative outlet and the freedom to develop our own abilities! Marketing is also responsible for merchandise; which means that we're the ones who create the amazing designs for our SCISOC shirts, hoodies, O-Week merchandise and the many more goodies we'll be giving out!

## Tell us a bit about yourself!

In my spare time, I enjoy listening to music as well as cooking here and there! I'm still waiting for all my ingredients to arrive, but once they come, I'm preparing to recreate Reynold's 'Golden Snitch' dessert! Aside from what I do at home, when I'm out I'm always looking for new restaurants to dine at and new foods to try out within Sydney (recommendations are welcome!)

# CHARLOTTE CHAN

VICE PRESIDENT OF EXTERNALS

## What does your role entail?

As the Vice President of Externals, I pursue new partnership and sponsorship opportunities with external parties on behalf of SCISOC. These include both corporate partnerships and event partnerships. With my Careers Directors, we utilise our communication and negotiation skills to pursue partnerships and sponsorships that would benefit the SCISOC community. In addition, we organise all career events to help our community develop skills that would enable them to best pursue their career aspirations. Careers subcommittee will help organise these events, ranging from networking, professional development workshops and case competitions.

## What is your personal experience with SCISOC?

I joined SCISOC last year as a Careers Director, and with my fellow co-director we got to lead some of the most caring, kind people. Over the last year, I have gotten to make some lifelong friends through SCISOC in both subcommittee and committee team. Despite Careers being a relatively new portfolio and with the additional difficulty of COVID-19, with a supportive committee team we were able to introduce many great career initiatives and develop many new skills (e.g. adaptability, communication and leadership skills) that are integral to the modern workplace.

## Tell us a bit about yourself!

In my spare time, I enjoy playing and listening to music. I also enjoy travelling to new places to see new cultures, and try new foods (hopefully the borders open soon)! For now, it has been nice to explore some of NSW's hidden treasures, and especially our nice bush hikes and coastal walks that I had overlooked previously.

# JOINING SCISOC!

First year is a great time to join a society. It provides the opportunity to make friends, grow your skills and also give back to the community. SCISOC will provide a safe and fun space for these experiences, as we work together to make Science more prevalent in society and bring value to Science students.

By following us across our social media platforms (Facebook, Instagram, LinkedIn) and subscribing to our newsletters, you can keep updated on how you can stay connected and involved. Specifically keep an eye out for the opening of subcommittee applications, which will be announced across these platforms. All you have to do to join our team is fill in a written application, and watch out for an email from us on the status of your application. If you are successful you will progress to an interview, where we will decide if you are a fit for our team. Our team will be led by very capable and friendly executives and directors to guarantee you a great society experience. Portfolios include Careers, Socials, Finance, Human Resources, IT/Publications, Digital Media and Marketing.

## STUDY SPACES

Some say the key to keeping productive is finding a great space to study in! Whether you are hitting the grind before final exams, or need an excuse to keep chatting with friends, these are our recommendations on the best study and "study" spots!

### UNSW MAIN LIBRARY

Located on the upper campus, the Main Library is a classic and iconic space on campus. Don't be daunted by its eight floors! Each level has its own purpose, and a different vibe.

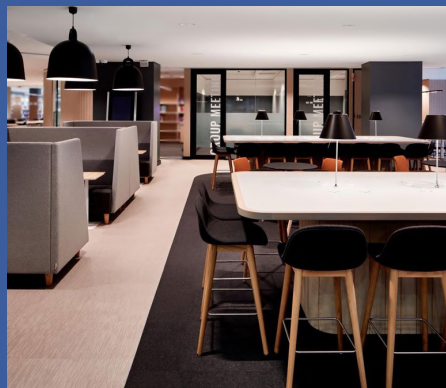
- **Level 2:** At the front of level two, you will find study lounges great for group or individual study, but expect a bit of noise. If you walk all the way to the end of level two, past the elevators, you will find a great space to conduct silent, individual study. There is also a microwave and eating area at the front and back of the library.
- **Level 3:** Feeling tired? Lack of sleep catching up to you? On level three you can find sleeping pods and long couches to take those power naps. On this level, you will find larger tables allowing for group study sessions as well as individual study desks with built-in desktops and benches throughout the floor for individual or group study.
- **Level 4:** Level four has a mix of group and individual study areas, and is generally quieter than level three. You will find that most of this floor is group study rooms which you can book.
- **Level 5:** Level five is a SILENT study area, this is the spot for when you really need to focus. With a range of individual desks and larger tables for groups, and whiteboards scattered throughout the floor, level five is the perfect space to stay productive without the distraction of others talking. This floor usually fills up though, so make sure you walk around the whole space to try and find a desk.
- **Level 8:** Level eight has a great mix of individual study spaces and larger tables for your group study sessions. If you come with your mates, be careful not to get too rowdy as campus security tightly monitors this level. If you are looking for a balance between social studying and productive studying level eight is the spot for you.

You can also book rooms and booths on the library website for private areas where you can collaborate with your peers. Most rooms contain a whiteboard and screen.



# LAW LIBRARY

Are most of your classes on lower campus? The Law Library might be the study space for you! Don't let the name intimidate you, the Law Library is open for students enrolled in any degree and is located at the bottom of the Law building. You can book rooms, conduct individual study in sectioned-off cubicles, on a bench looking out to lower campus or conduct group study on their large tables. For the most part, the Law Library is a relatively quiet spot and a great place to try and focus.



## SCIENCE AND ENGINEERING BUILDING

Located at the lower campus opposite the law building and adjacent to Hilmer, at the basement level of the Science and Engineering building there is a wide range of newly renovated study areas. Depending on which entrance you use, you can get there by using the elevator and going to the Basement level, or by walking down a flight of stairs. This study spot is very conducive to productivity, is usually extremely silent and has a wide range of different kinds of desks, benches and couches so you can study the way that you want!



## BUSINESS SCHOOL (ASB)

You can find the business school near the quad at middle campus. With six levels, it has a wide variety of study spots and amenities including microwaves. On the bottom floor (called The Place) there are study booths with low-lighting in case you are also in need of a quick nap. On levels one or two there is a selection of brightly lit study spaces - you can choose from the sunlit window seating, or traverse through the building to choose a study couch or study bench. The business school is as much a social study spot as it is a productive one, so if you need zero distractions, perhaps visit the Science and Engineering Building instead.



## DRINKS TO POWER YOUR ALL-NIGHTERS

### the little marionette

The Little Marionette is the place to go for all coffee connoisseurs. With a wide range of top-quality coffee beans and drinks, boasting small batch single origins, and fresh filter roasts, you get more than just a cup of coffee.



### coffee on campus

Located inside of the Ainsworth Building, middle campus, Coffee on Campus is a great place to get your caffeine fix. With a wide range of seating (both inside and outside), you can order a coffee to go or to sit-in, and prop up your laptop to start a study grind. Coffee on Campus also has an amazing range of food and pastries perfect for breakfast, lunch or even a quick snack!



### atomic press

You can find the Atomic Press Cafe within the UNSW Bookshop near the quad at middle campus. With a range of great-tasting coffees and teas, it's the perfect place to freshen up with a warm cuppa. Atomic Press also has special deals where you can get your first drink free (if you scan their QR code). Atomic Press also offers a range of artisan breads, sandwiches, baked goods, breakfast bowls and poke bowls in addition to their gourmet coffee.



# food&cafes ON campus

Whether it is fuelling those upper-campus-to-lower-campus sprints via Basser steps or choosing a café to grab your morning caffeine fix, here are the best places to find a feed around UNSW for when you are feeling hungry:

## yallah eat

Located in the University Terraces building, lower campus near the IGA, Yallah Eat is your go-to for all your middle eastern cravings. With the option to build your own pita or bowl, you are guaranteed great food exactly the way you like it!

## laksa delight

In the mood for a great Laksa or stir fry? Time to line up for Laksa Delight, located in the Matthews Food Court, upper campus. Heartwarming noodle soups at variable price points, starting at less than \$10 is a delicious way to treat yourself for lunch.

## q-lounge

\$11 lunch packs with your choice of meat, chips or mash potato and a wide range of sauces are the name of the game at Q-lounge. In the Quadrangle Building, middle campus, at Q-lounge you can dine-in on one of the couches or get your daily dose of sunshine sitting outside on the balcony - just make sure you are on the lookout for ibises!

## the whitehouse

The Whitehouse, which can be found near Gate 4, middle campus is a great place to round up your mates and share a jug of cider or a few pizzas. With daily specials and a range of pub food and coffees, you can fuel up with your friends downstairs, or head upstairs to eat and study.

## the roundhouse

Whether you are in between classes or finished a full day of lectures, tutorials and labs, The Roundhouse is the spot to grab a drink and relax over a game of pool or table tennis. Come at night to enjoy their events and parties!

## stockmarket kitchen

Located in the Matthews Food Court, upper campus, Stockmarket Kitchen is a popular place to grab a healthy meal. With DIY salads that you can build yourself and an amazing selection of soups, pastas and smoothies, Stockmarket Kitchen is doing the most to keep you revitalised. You can skip the line by downloading their app and ordering in advance!

## the classics

Find yourself around upper campus not sure what to eat? You can't go past the classics, Subway and Boost Juice, for a quick takeaway drink and meal.



# STUDY TIPS

- Most science courses are really content-heavy and require a lot of memorization. One of the best ways to understand science concepts is to teach another friend. You and your friend can alternate between topics or learning outcomes to teach, which can help further your understanding of difficult concepts. This can also help clarify any queries you have.
- Diagrams are extremely helpful to summarise a complex process and help you understand what is happening.
- Always read your lab manual beforehand and highlight key parts of the method. It is also helpful to draw a flowchart of the method so you understand what is happening.
- For any courses or questions that involve calculations, the best way to ace it is to keep practicing and do as many questions as you can. Remember to utilise all the resources provided by your lecturers/tutors as they will certainly help you for your exams.
- Of course, don't be afraid to ask for help. You can ask your lecturers, tutors, lab demonstrators and peers. Students generally ask their tutors or lab demonstrators as the class or group would usually be less than 20 students. There are usually course forums on Moodle, where you can post a question and a staff member from the course will reply.



# tips on meeting NEW PEOPLE

Meeting new people and making new friends can be really difficult. However, here are some tips that could help you.



1. Participate in extracurricular activities like joining societies (like SCISOC), volunteering or doing sports.

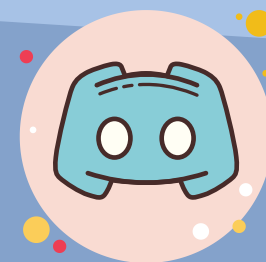


2. Attend events held by societies, which would be announced on their Facebook page.



3. Tutorials and Labs are another way to talk to your peers as classes would be smaller, unlike in lectures, and you would most likely have an opportunity to work with them.

4. Hop onto Discord to play games with other people, chat and hopefully make a new friend. Come and join the SCISOC playground: <https://discord.gg/vtHk5v>



# getting involved — IN UNI

## VOLUNTEERING

### UNSW ADVANTAGE

Want all your volunteering to get recognised? With UNSW's Advantage program, you can be a part of one of 450 volunteering or professional development programs, and the hours that you put in are recorded on your Australian Higher Education Graduation Statement (AHEGS). Check out the UNSW Advantage website [here](#) to discover volunteering projects that contribute towards AHEGS. These can span across Arc programs, philanthropic programs, faculty mentoring, renewable projects, community outreach and more!

### UNSW Media and Communications

If you are a passionate writer, reader, photographer or love to keep others informed, this volunteering opportunity is for you! With UNSW's Media and Publications, you can volunteer to work on Blitz magazine, TV, radio to stay up to date with student life. You can also sign up to contribute to journals and multimedia productions spanning across politics, science, art and law. These volunteering opportunities are a great way to communicate your creativity and be heard by a broader audience. Check out each of these programs [here](#).

### Shack Tutoring

Want to support and inspire local high schoolers? With Shack Tutoring's volunteering program, you can develop your own communication and leadership skills, whilst uplifting high schoolers and aiding them in finding their greatness. In addition to aiding students with curricular work, you can offer students advice, make them feel welcomed and nurture their growth throughout high school. With a light commitment of 1-2 hours a week, you will also have the chance to further strengthen your organisation and time management abilities. To learn more and apply, find them [here](#).

### ASPIRE Ambassador

UNSW's ASPIRE program is one of UNSW's flagship outreach programs facilitated by Access and Equity student volunteers. As an ASPIRE Ambassador, you would deliver mentoring and support to Access and Equity high schoolers across academics, self-development and inspiring them to aspire for university. ASPIRE Ambassadors aid in-school and on-campus events and workshops with different schools across NSW, and discuss scholarship opportunities, program offerings and the overall transition from high school to tertiary education. ASPIRE Ambassadors are also recognised by AHEGS and UNSW Leadership Program. Find out more [here](#)!

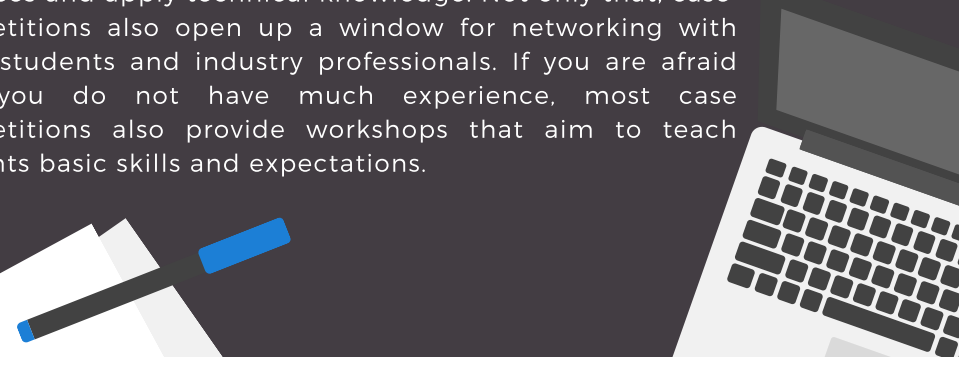


UNSW offers a range of sports for anybody and everybody on campus to play! Whether it be the common hobbies such as basketball or soccer, to much less common sports like aikido or target rifling, UNSW has a sport for practically everybody.

Most sports clubs have their own Facebook page and website, which you can check out for more details about where their activities take place, as well as how to get involved. To see the full range of sports that UNSW offers, go to <https://www.sport.unsw.edu.au/index.php/clubs> to find out more.

## CASE COMPETITIONS

Many UNSW student societies hold case competitions, which are events where students form or are allocated into teams of typically four members within a limited period of time. Participants are given a case study which they will have to recognise its major issues, and thereby generate a solution for in a slide deck. Case competitions are great opportunities to develop your innovative and communication skills, critical strategies in facing business case problems, emulate industry practices and apply technical knowledge. Not only that, case competitions also open up a window for networking with other students and industry professionals. If you are afraid that you do not have much experience, most case competitions also provide workshops that aim to teach students basic skills and expectations.



# OTHER SCIENCE SOCIETIES

## DataSoc

At UNSW DataSoc, we strive to create Data Science-related opportunities for both students in their studies, as well as careers. We host workshops, information sessions, networking nights, and many more career-focused events to allow students to broaden their horizons and introduce them to new career pathways and opportunities. As a society, we aim to enrich students' lives with a sense of community and diversity among UNSW Data Science students, as well as any students with an interest in the field of Data Science. Besides these, we hold a plethora of social activities every year such as BBQs, competitions, games nights, balls, and many more that everyone is welcome to attend. We hope these events allow you to not only meet like-minded people but also form lifelong relationships that you can rely on.

- Samraggi Pant, 2021 Marketing Director

## StatSoc

The UNSW Society of Statistics is the society for anyone interested in statistics (you don't have to be studying statistics!). Each year we hold a bunch of exciting events, including social ones like games nights and meetups, educational ones like subject revision sessions that will help with your studies, skills workshops that will increase your employability, and also just events on things we think are really interesting, like how statistics are used in the financial world or how you can predict which team is most likely to win a sports match! We encourage you to follow our Facebook page and sign up as a member (it's free!) so you can keep an eye on events we're running and see if any look interesting to you.

- Jack Stephens, 2020 President

## MedSciSoc

The Medical Science Society's (previously SMSSOC's) objective is to facilitate the socialising, learning, and career-building for all UNSW students who are passionate about Medicine and Science. Our goal is to create amazing opportunities for all those students who are looking to meet new people, advance further in their studies and develop professional connections in medical and science-related industries. In addition, being part of the Medical Science Society will provide you with connections with all year groups who will give you great insights and advice about your degree. Even in our new online world, we have offered a large range of events from games night to careers night to subject-specific trivia nights (specifically designed to help you with your upcoming exams). Previously, many of our sold-out events include pub crawl, annual camp, cruise and of course, ball. We understand there are so many societies to choose from, but we believe ours is very welcoming and inclusive so why not come along! We would LOVE to see you!

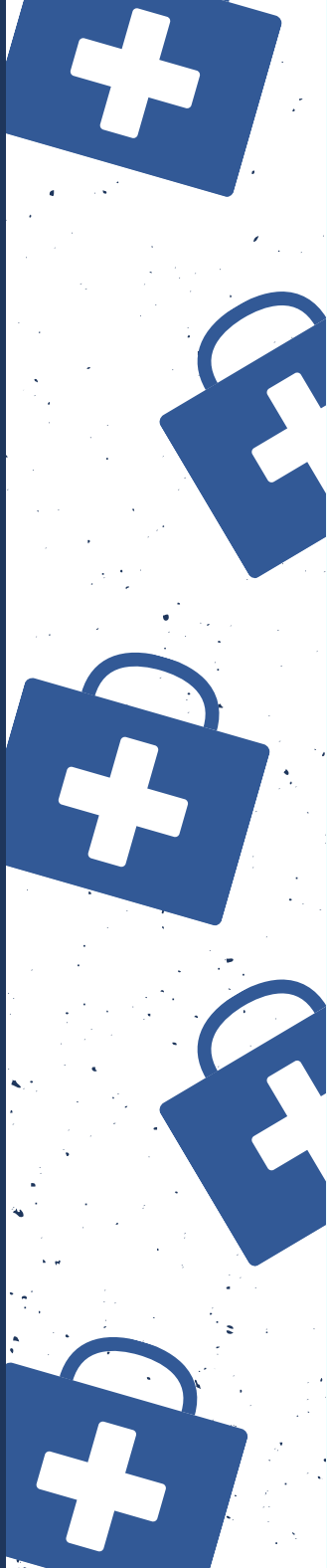
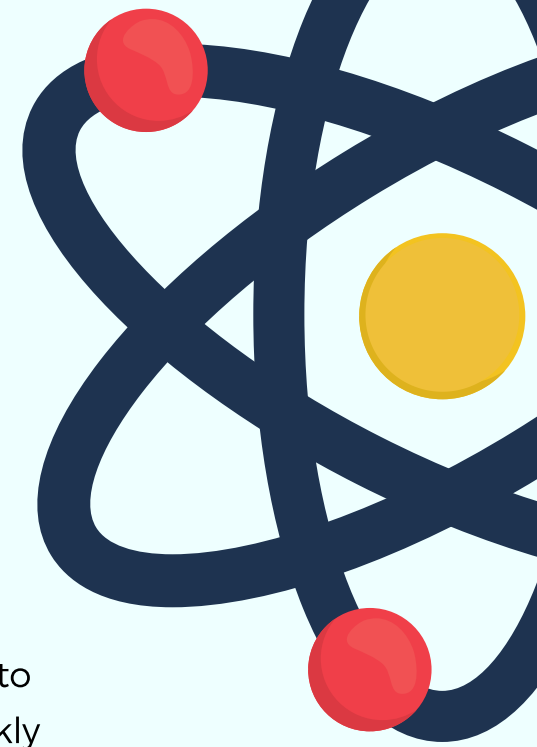
- Elizabeth Heard, 2020 Second Year Representative

## BABSOC

The Biotechnology and Biomolecular Sciences Student Society (BABSOC) hosts various termly events that range from personal development events (e.g. Resume Writing to workshops) to entertaining events (e.g. BABROSS) and to academic events (e.g. Weekly Challenge Questions).

BABSOC's events can be broadly divided into professional, social and academic events that cater to students of differing interests. As part of the BABSOC community, you meet and interact with an enthusiastic group of BABS students (some of whom may be your lab partners in your courses ☺). Overall, being a member of BABSOC is an amazing experience in terms of events and people you meet throughout the journey.

- Adnan Agha, 2020 Academic Events Coordinator



## PSYCHSOC

UNSW Psychology Society is a student body society that aims to engage, support and connect all psychology students. At Psychsoc, we are united by one core mission; to foster Psychology students' personal growth and help them realise their ambitious academic and professional goals. We achieve this through building strong social support networks that enrich university experiences and provide opportunities to create unforgettable memories that last long beyond one's degree. In my role as Grievance Officer, I foster a supportive and inclusive culture, and my primary role is to create social events for the committee members! Basically, I just make everyone friends, which makes it such a rewarding role, especially seeing first years make so many new friends in the committee. One of the things I love about being in Psychsoc is the collaborative atmosphere during team meetings with ideas buzzing around the room. It's such a privilege to be a part of and it makes my heart so full. If anyone is considering joining Psychsoc I would highly encourage it because it's 100% the best decision I have made coming into this new university environment.

- Asha Hossain 2020 Grievance Officer



$$\sum_{i=0}^{\infty} x^i = \frac{1}{1-x}$$

$$y = \frac{\Delta x}{\Delta t}$$

$$\ln = \ln a \times b$$

$$\sum_{n=0}^{\infty} \frac{x^n}{n!}$$

$$\sin a = \frac{b}{c}$$

$$a^2 + b^2 = c^2$$

## MATHSOC

UNSW Mathematics Society is the society for all things Mathematics. Whether you're an avid lover of maths or a casual, we have a wide range of activities to help you unlock that inner mathematical potential and at the same time, make new friends! Additionally, we offer educational resources to help students through their university life, from revision seminars to fully-worked lab solutions. Joining UNSW Mathsoc will be an abundance of good memories while, at the same time, fuelling that passion for Mathematics.

- Gerald Huang, 2021 Arc Delegate

$$\lim_{x \rightarrow 1} \frac{\ln x - 2}{2 \ln x - 3}$$

$$S_3 = \begin{bmatrix} 1 & 0 & 0 \\ 1 & 0 & 1 \\ 0 & 0 & 1 \end{bmatrix}$$

$$\int (x \pm a)^2$$

$$\sum = n-1$$

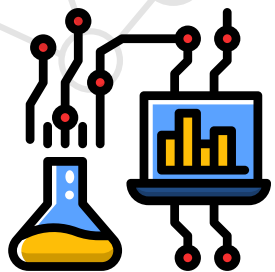
$$\frac{A-C}{C}$$

$$\phi = \sqrt{\frac{\sum (x-m)^2}{n-1}}$$

$$S = \int_2^{10} 5t \, dt$$

$$\pi \approx 3.1415$$

$$\sin \alpha$$



**BINFSOC**



UNSW Bioinformatics Society (BINFSOC) unites all bioinformatics students as well as computer science, biology, statistics and chemistry disciplines, to create a network of future thinkers and innovators. We aspire to help students discover what it means to study Bioinformatics through connecting students with industry representatives and expanding their network, educating students and the community about the importance of Bioinformatics and inspiring creativity and innovation.

- Erica Jin  
(2021 Vice President)

# SUPPORTING STUDENTS

## STUDENT SERVICES

The Learning and Career Hub located at the Commerce courtyard next to the Southern Wok provides academic support to all students. They hold workshops to improve essay writing skills as well as individual consultations and online self-access resources. The career hub runs regular workshops about career planning, improving resume writing and interviewing skills and provides individual career advice by appointments.

# DISABILITY

Equality is imperative at UNSW and our Disability Services, located on the ground floor of John Goodsell is staffed by Disability Advisers, who will provide you with the best support regarding health, academics and more. The Disability Service also hire note-takers to support students who are not able to take notes themselves.

Check out <https://student.unsw.edu.au/disability> for more information.

# HEALTH SERVICES

The University Health Service is located on the ground floor of the east Quadrangle Building, where students can go and see a GP and receive comprehensive care.

The counseling and psychological services (CAPS) is also located in the east wing of the Quadrangle Building but on level 2. Students are offered free food and confidential services including individual counseling, programs, workshops and self-help resources. If you're feeling overwhelmed with uni or you need someone to talk to, CAPS is staffed by qualified psychologists for you to talk to.

---

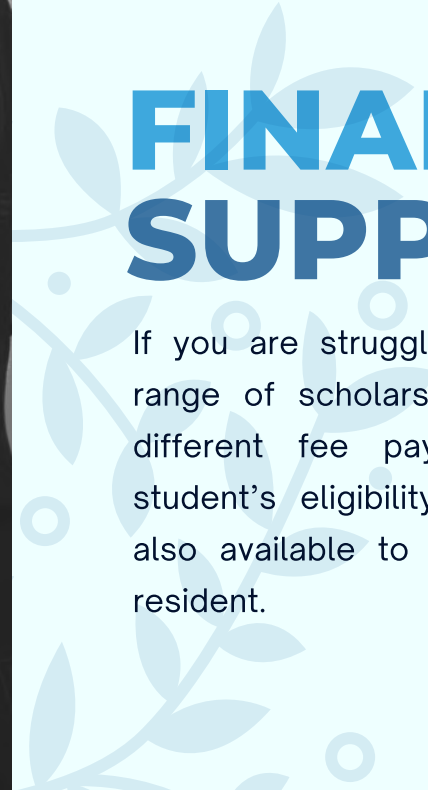
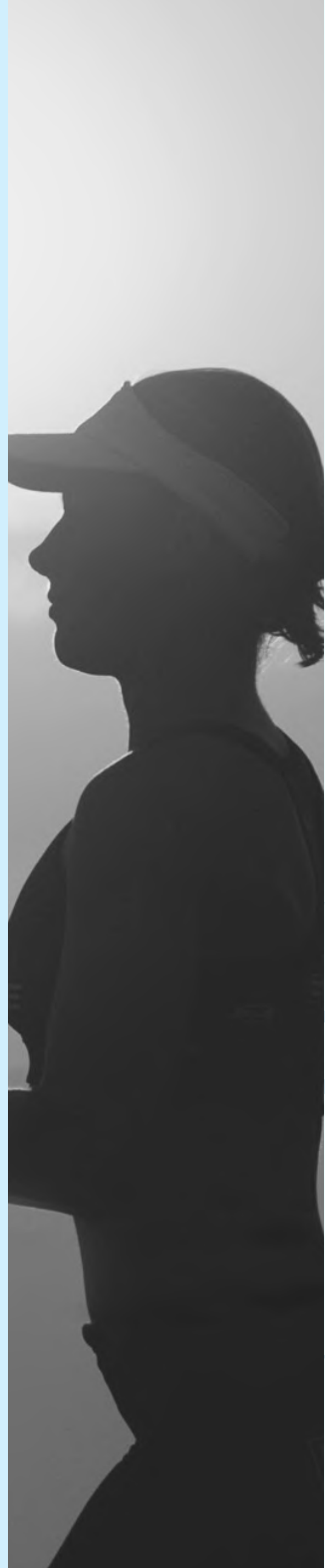
# LGBTIQ+

The ALLY is a program that aims to ensure UNSW is a safe and welcoming place and is staffed by people who identify themselves as LGBTIQ+. The program also includes discussions about sexuality, diverse gender and explores the challenges the LGBTIQ+ community is facing. ALLY aims to reduce barriers of fear and ignorance that lead to prejudice and discrimination.

Visit <http://student.unsw.edu.au/ally> for more information

# FINANCIAL SUPPORT

If you are struggling financially, UNSW offers a wide range of scholarships as well as student loans and different fee payment plans, depending on each student's eligibility and circumstances. HECS-HELP is also available to any Australian citizen or permanent resident.



# INDIGENOUS STUDENTS

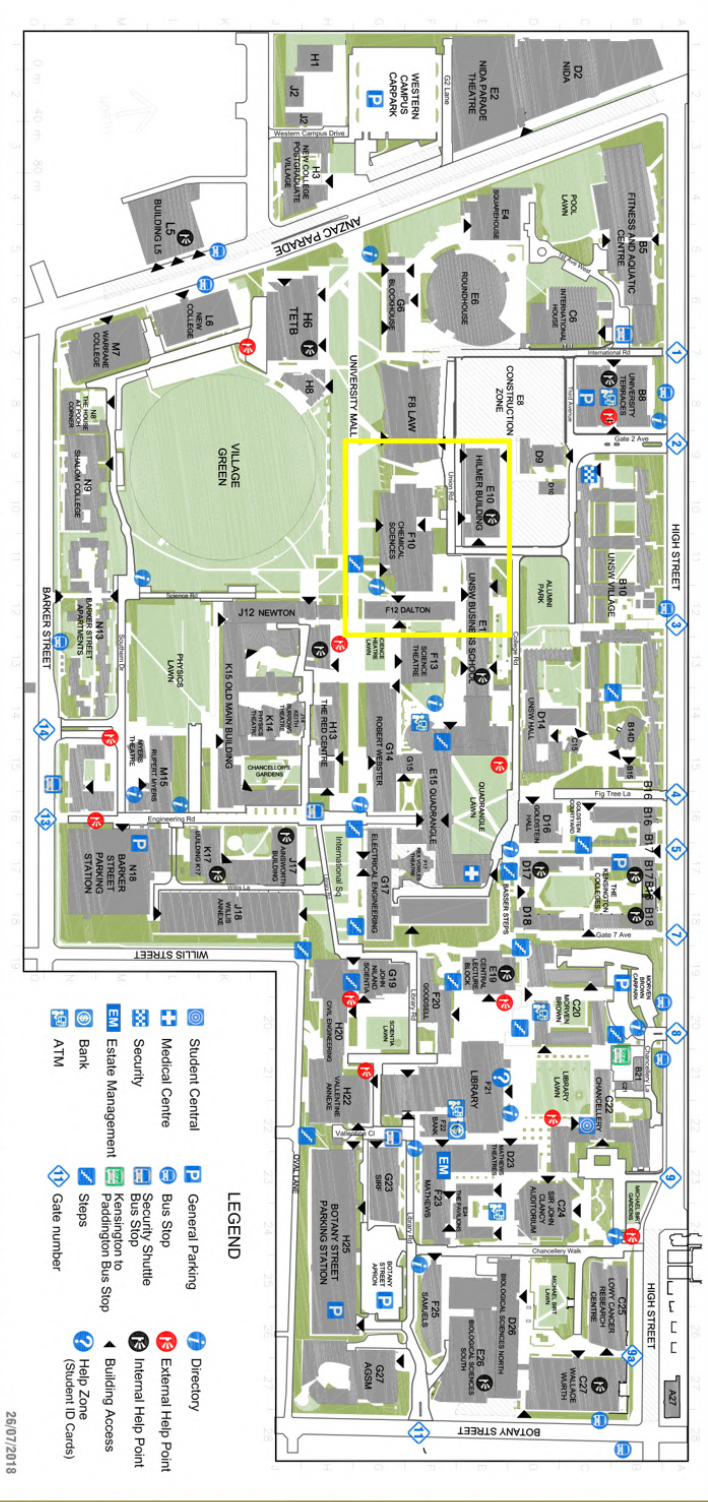
Nura Gili is a centre for Indigenous programs that is located in Balnaves Place, Lower Ground of the Electrical Engineering Building. They provide pathways for prospective indigenous students to study in all UNSW programs. This service also provides a range of indigenous student support, tutorial and study spaces.

# INTERNATIONAL STUDENTS

The Student Development International (SDI) on the ground level of John Goodsell is a go-to place if you're an international student struggling to adjust to this new learning environment. This service helps overseas students adjust, provides advice and support, and facilitates social and educational activities. The Student Support and Success (SSS) is located at the same place and it helps students with academic performance, personal and financial difficulties and helps students adjust to university. The Learning and Career Hub holds conversation classes for international students to improve their co-nsersational skills.



Buildings	Low Cancer	University Regiment	Arts and Social Sciences	Faculty Offices	New South Wales Theatre	Foundation Studies	Research Services
ACSM	G27	C25	E1/2	C20	G14	K15	M15
Assessors Building	J17	C25	E1/2	C20	K15	K15	M15
Blockhouse	E26	C25	E1/2	C20	K15	K15	M15
Biological Sciences South	E26	C25	E1/2	C20	K15	K15	M15
Building D10	D10	C25	E1/2	C20	K15	K15	M15
Building D12	D12	C25	E1/2	C20	K15	K15	M15
Building D13	D13	C25	E1/2	C20	K15	K15	M15
Building D14	D14	C25	E1/2	C20	K15	K15	M15
Building D15	D15	C25	E1/2	C20	K15	K15	M15
Building D16	D16	C25	E1/2	C20	K15	K15	M15
Building D17	D17	C25	E1/2	C20	K15	K15	M15
Building D18	D18	C25	E1/2	C20	K15	K15	M15
Building D19	D19	C25	E1/2	C20	K15	K15	M15
Building D20	D20	C25	E1/2	C20	K15	K15	M15
Building D21	D21	C25	E1/2	C20	K15	K15	M15
Building D22	D22	C25	E1/2	C20	K15	K15	M15
Building D23	D23	C25	E1/2	C20	K15	K15	M15
Building D24	D24	C25	E1/2	C20	K15	K15	M15
Building D25	D25	C25	E1/2	C20	K15	K15	M15
Building D26	D26	C25	E1/2	C20	K15	K15	M15
Building D27	D27	C25	E1/2	C20	K15	K15	M15
Building D28	D28	C25	E1/2	C20	K15	K15	M15
Building D29	D29	C25	E1/2	C20	K15	K15	M15
Building D30	D30	C25	E1/2	C20	K15	K15	M15
Building D31	D31	C25	E1/2	C20	K15	K15	M15
Building D32	D32	C25	E1/2	C20	K15	K15	M15
Building D33	D33	C25	E1/2	C20	K15	K15	M15
Building D34	D34	C25	E1/2	C20	K15	K15	M15
Building D35	D35	C25	E1/2	C20	K15	K15	M15
Building D36	D36	C25	E1/2	C20	K15	K15	M15
Building D37	D37	C25	E1/2	C20	K15	K15	M15
Building D38	D38	C25	E1/2	C20	K15	K15	M15
Building D39	D39	C25	E1/2	C20	K15	K15	M15
Building D40	D40	C25	E1/2	C20	K15	K15	M15
Building D41	D41	C25	E1/2	C20	K15	K15	M15
Building D42	D42	C25	E1/2	C20	K15	K15	M15
Building D43	D43	C25	E1/2	C20	K15	K15	M15
Building D44	D44	C25	E1/2	C20	K15	K15	M15
Building D45	D45	C25	E1/2	C20	K15	K15	M15
Building D46	D46	C25	E1/2	C20	K15	K15	M15
Building D47	D47	C25	E1/2	C20	K15	K15	M15
Building D48	D48	C25	E1/2	C20	K15	K15	M15
Building D49	D49	C25	E1/2	C20	K15	K15	M15
Building D50	D50	C25	E1/2	C20	K15	K15	M15
Building D51	D51	C25	E1/2	C20	K15	K15	M15
Building D52	D52	C25	E1/2	C20	K15	K15	M15
Building D53	D53	C25	E1/2	C20	K15	K15	M15
Building D54	D54	C25	E1/2	C20	K15	K15	M15
Building D55	D55	C25	E1/2	C20	K15	K15	M15
Building D56	D56	C25	E1/2	C20	K15	K15	M15
Building D57	D57	C25	E1/2	C20	K15	K15	M15
Building D58	D58	C25	E1/2	C20	K15	K15	M15
Building D59	D59	C25	E1/2	C20	K15	K15	M15
Building D60	D60	C25	E1/2	C20	K15	K15	M15
Building D61	D61	C25	E1/2	C20	K15	K15	M15
Building D62	D62	C25	E1/2	C20	K15	K15	M15
Building D63	D63	C25	E1/2	C20	K15	K15	M15
Building D64	D64	C25	E1/2	C20	K15	K15	M15
Building D65	D65	C25	E1/2	C20	K15	K15	M15
Building D66	D66	C25	E1/2	C20	K15	K15	M15
Building D67	D67	C25	E1/2	C20	K15	K15	M15
Building D68	D68	C25	E1/2	C20	K15	K15	M15
Building D69	D69	C25	E1/2	C20	K15	K15	M15
Building D70	D70	C25	E1/2	C20	K15	K15	M15
Building D71	D71	C25	E1/2	C20	K15	K15	M15
Building D72	D72	C25	E1/2	C20	K15	K15	M15
Building D73	D73	C25	E1/2	C20	K15	K15	M15
Building D74	D74	C25	E1/2	C20	K15	K15	M15
Building D75	D75	C25	E1/2	C20	K15	K15	M15
Building D76	D76	C25	E1/2	C20	K15	K15	M15
Building D77	D77	C25	E1/2	C20	K15	K15	M15
Building D78	D78	C25	E1/2	C20	K15	K15	M15
Building D79	D79	C25	E1/2	C20	K15	K15	M15
Building D80	D80	C25	E1/2	C20	K15	K15	M15
Building D81	D81	C25	E1/2	C20	K15	K15	M15
Building D82	D82	C25	E1/2	C20	K15	K15	M15
Building D83	D83	C25	E1/2	C20	K15	K15	M15
Building D84	D84	C25	E1/2	C20	K15	K15	M15
Building D85	D85	C25	E1/2	C20	K15	K15	M15
Building D86	D86	C25	E1/2	C20	K15	K15	M15
Building D87	D87	C25	E1/2	C20	K15	K15	M15
Building D88	D88	C25	E1/2	C20	K15	K15	M15
Building D89	D89	C25	E1/2	C20	K15	K15	M15
Building D90	D90	C25	E1/2	C20	K15	K15	M15
Building D91	D91	C25	E1/2	C20	K15	K15	M15
Building D92	D92	C25	E1/2	C20	K15	K15	M15
Building D93	D93	C25	E1/2	C20	K15	K15	M15
Building D94	D94	C25	E1/2	C20	K15	K15	M15
Building D95	D95	C25	E1/2	C20	K15	K15	M15
Building D96	D96	C25	E1/2	C20	K15	K15	M15
Building D97	D97	C25	E1/2	C20	K15	K15	M15
Building D98	D98	C25	E1/2	C20	K15	K15	M15
Building D99	D99	C25	E1/2	C20	K15	K15	M15
Building D100	D100	C25	E1/2	C20	K15	K15	M15





## UNSW Science Society



UNSW Science Society



[www.unswscisoc.org](http://www.unswscisoc.org)



[hello@unswscisoc.org](mailto:hello@unswscisoc.org)



UNSW Science Society



UNSW Science Faculty,  
Room 128, Robert  
Webster Building,  
UNSW

**SCISOC INCORPORATED**  
**ABN: 93 893 523 717**