

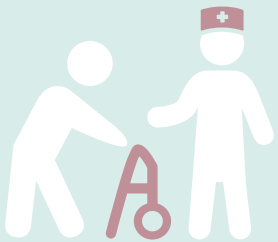
**Have you been vaccinated against COVID-19?**

**Do you have a history of COVID-19?**

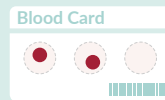
**Do you want to know if you have immunity against COVID-19?**



**Help us help you**  
better understand what your personalized immunity  
profile against COVID-19 looks like



If you are a resident or worker in an LTC home, whether you have been vaccinated or not, you can participate in our study.



We will be safely collecting blood samples through a finger prick from you, at several timepoints, over the next 12 months.



We will measure whether you have antibodies against COVID-19 and share your personalized results with you.

**Residents,**

Please complete this 15 minutes survey in the link found in the QR code or enter the URL below:



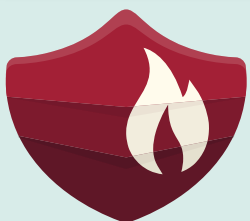
[www.surveymonkey.ca/r/LTC-Residents-Immunity-Study](http://www.surveymonkey.ca/r/LTC-Residents-Immunity-Study)

**LTC Workers,**

Please complete this 15 minutes survey in the link found in the QR code or enter the URL below:



[www.surveymonkey.ca/r/LTC-Workers-Immunity-Study](http://www.surveymonkey.ca/r/LTC-Workers-Immunity-Study)



**c19ImmunityStudy.ca**  
Powered by Bruyère 

In collaboration with



To find out more about the Bruyère C19 Immunity Study and how to participate, please visit our webpage at [www.c19immunitystudy.ca](http://www.c19immunitystudy.ca) or send us an email at [c19immunitystudy@bruyere.org](mailto:c19immunitystudy@bruyere.org)