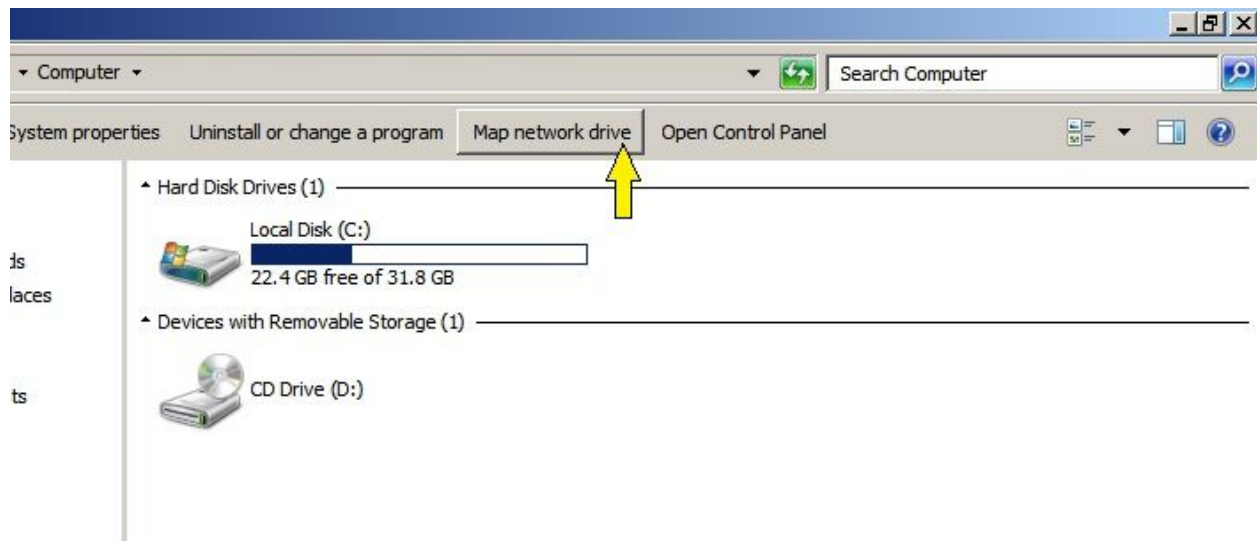
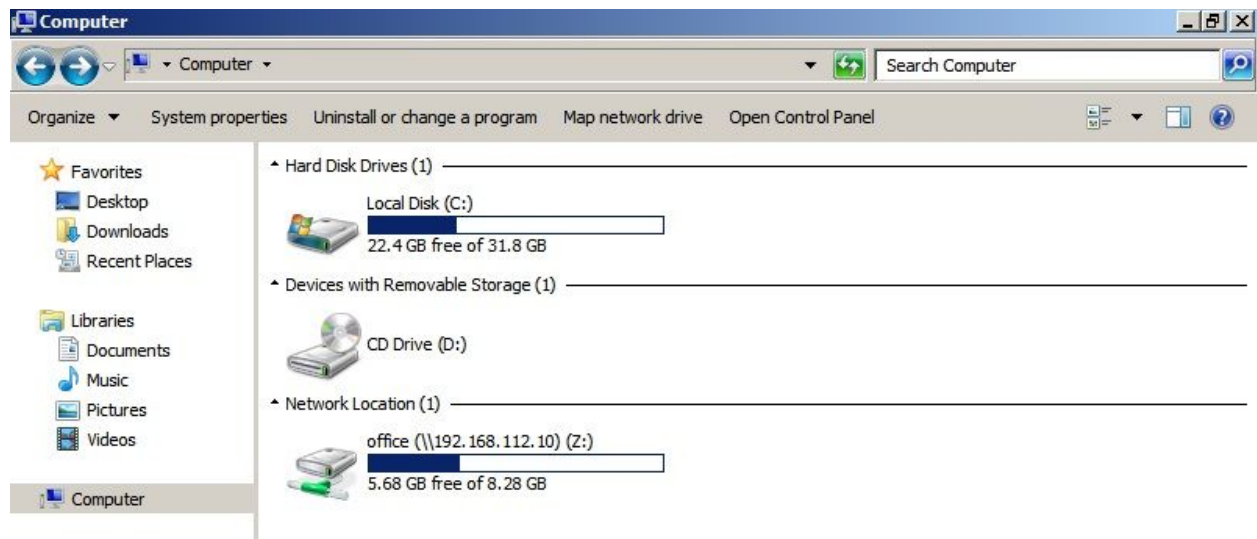
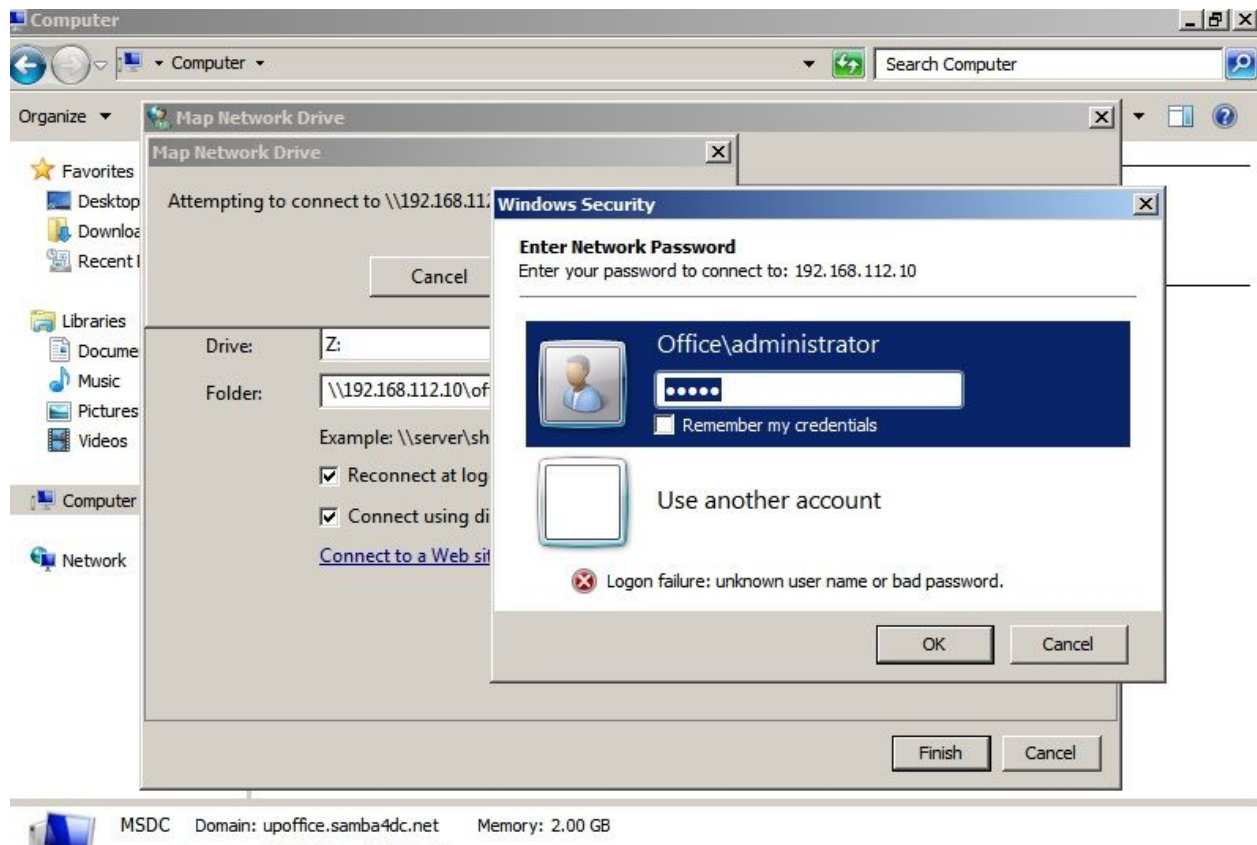


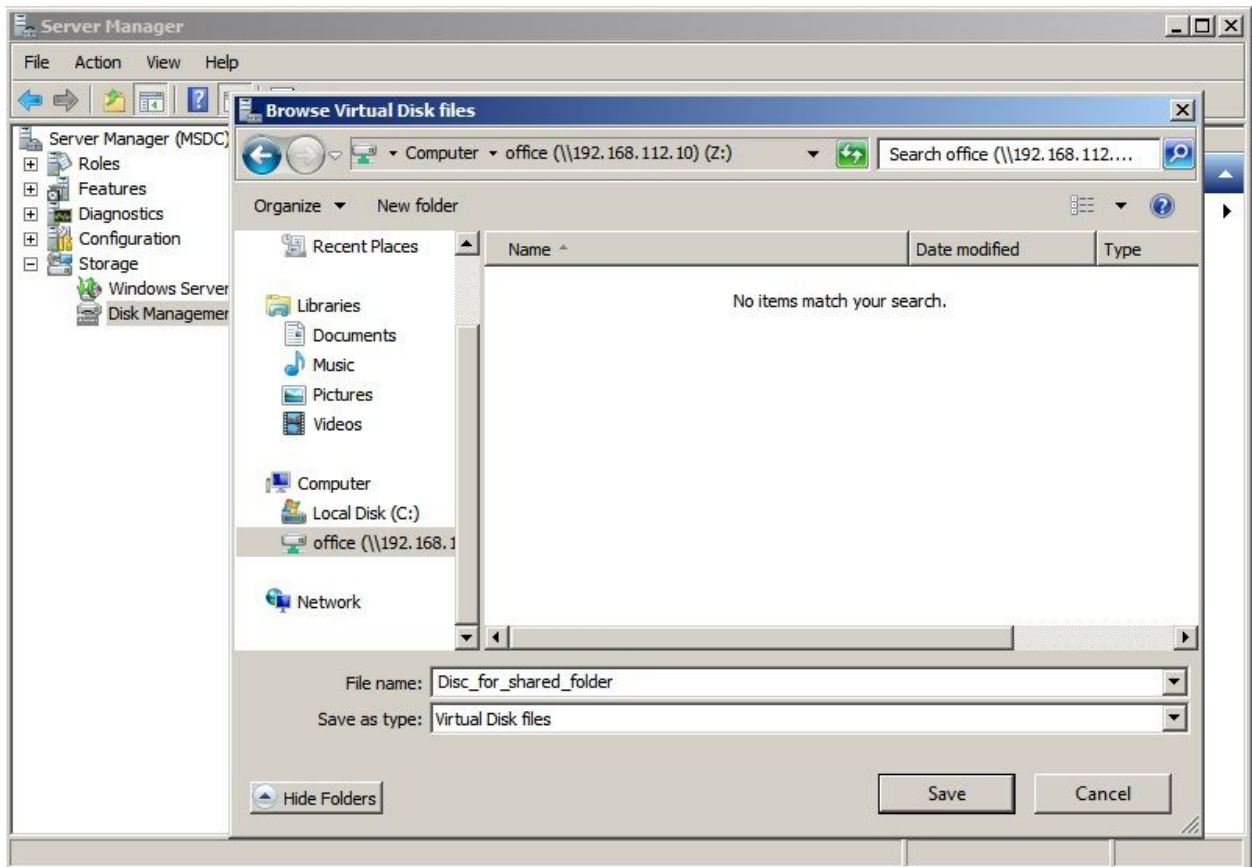
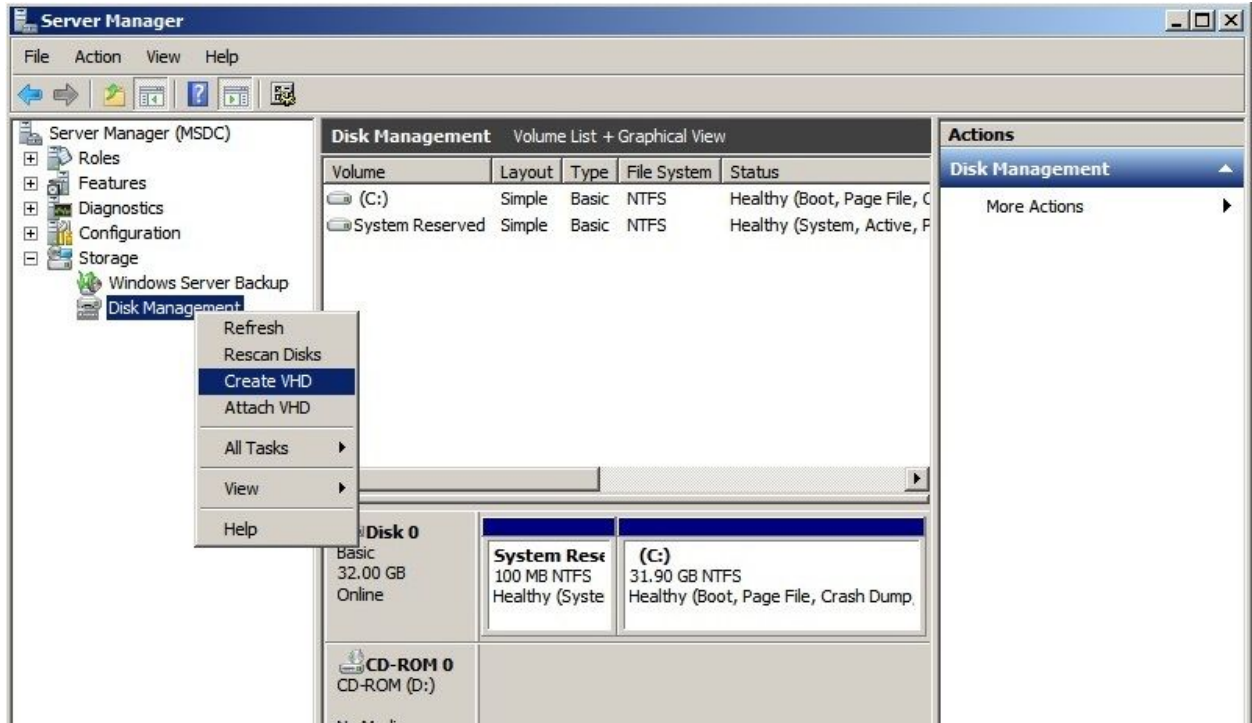
This document describes how to utilise disk space of Samba 3 system by Active Directory Domain Controller via SMB protocol.

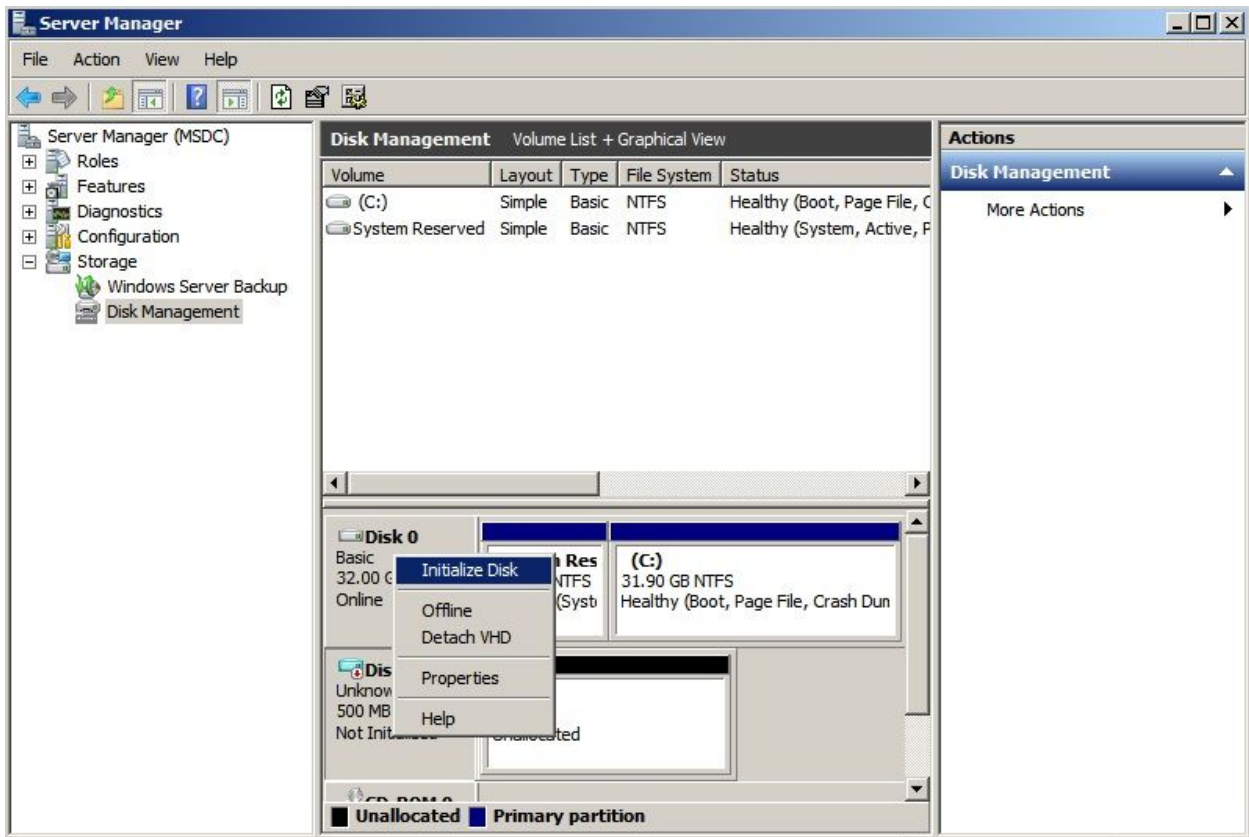
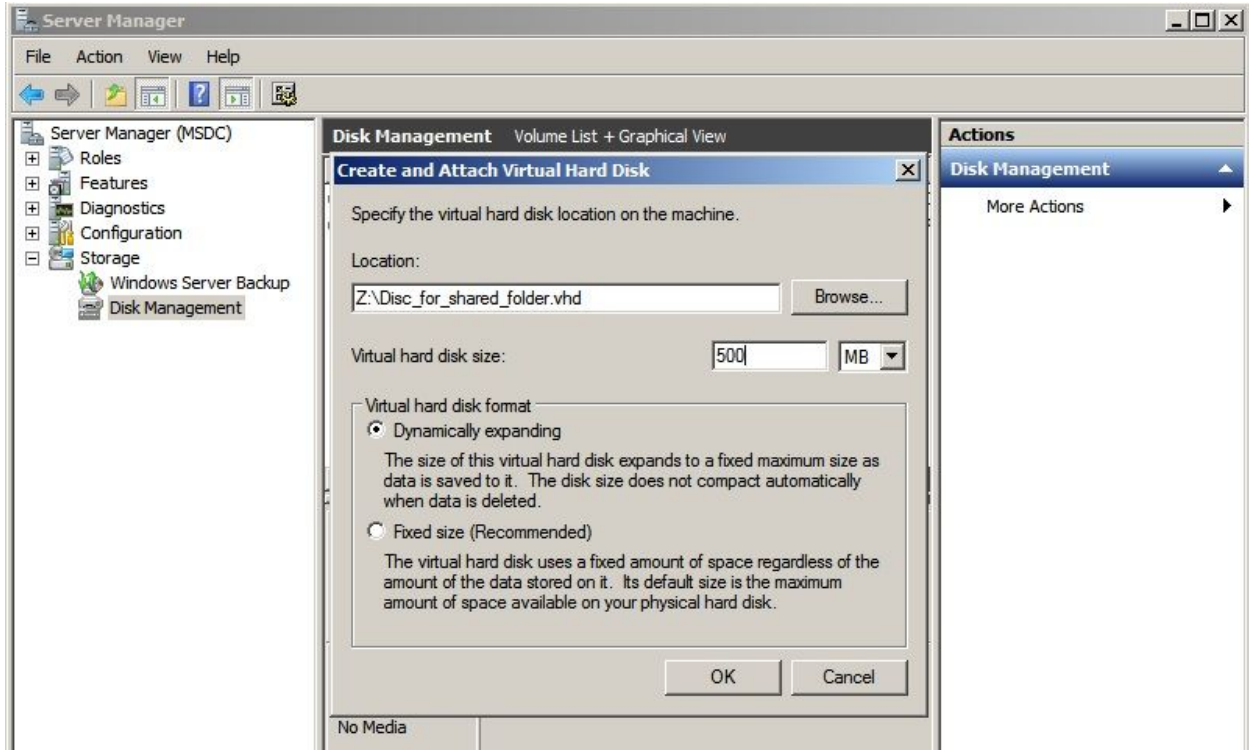
1. Open "My Computer". Connect Samba3 network folder as network drive to Microsoft Domain Controller.

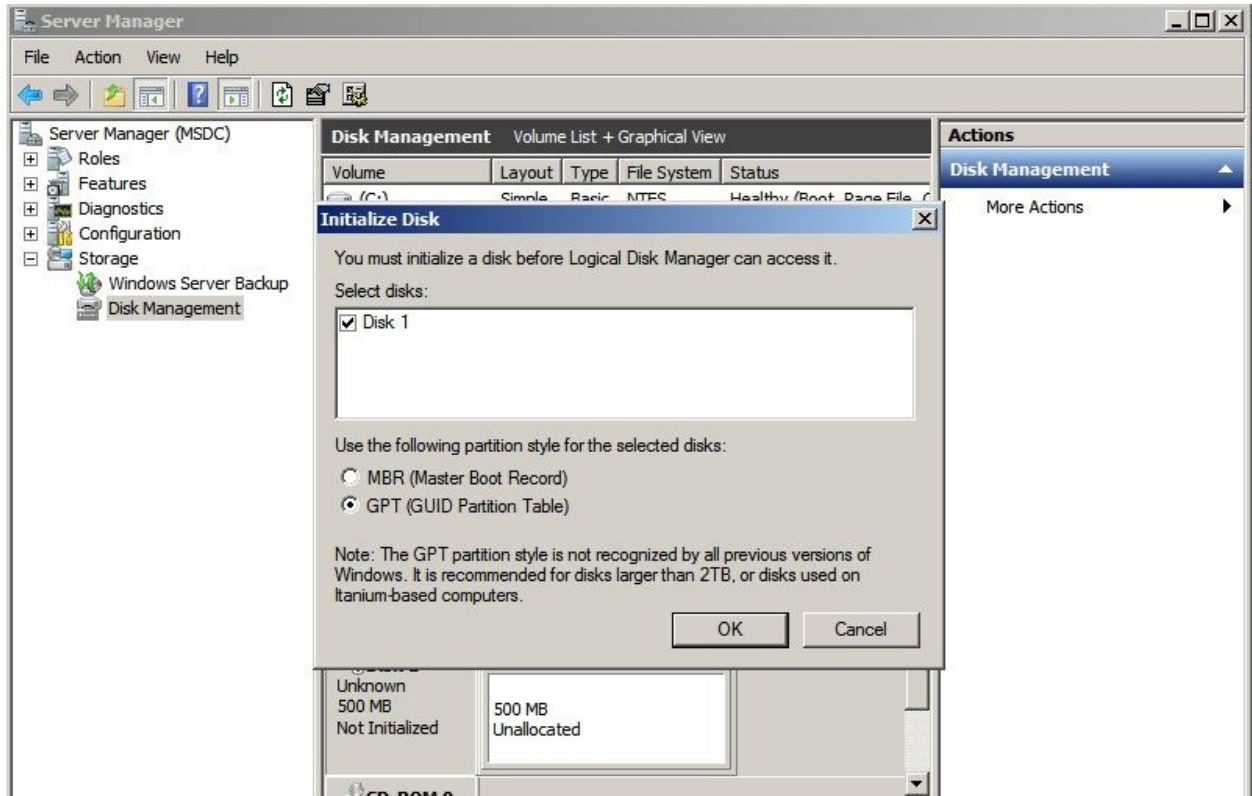




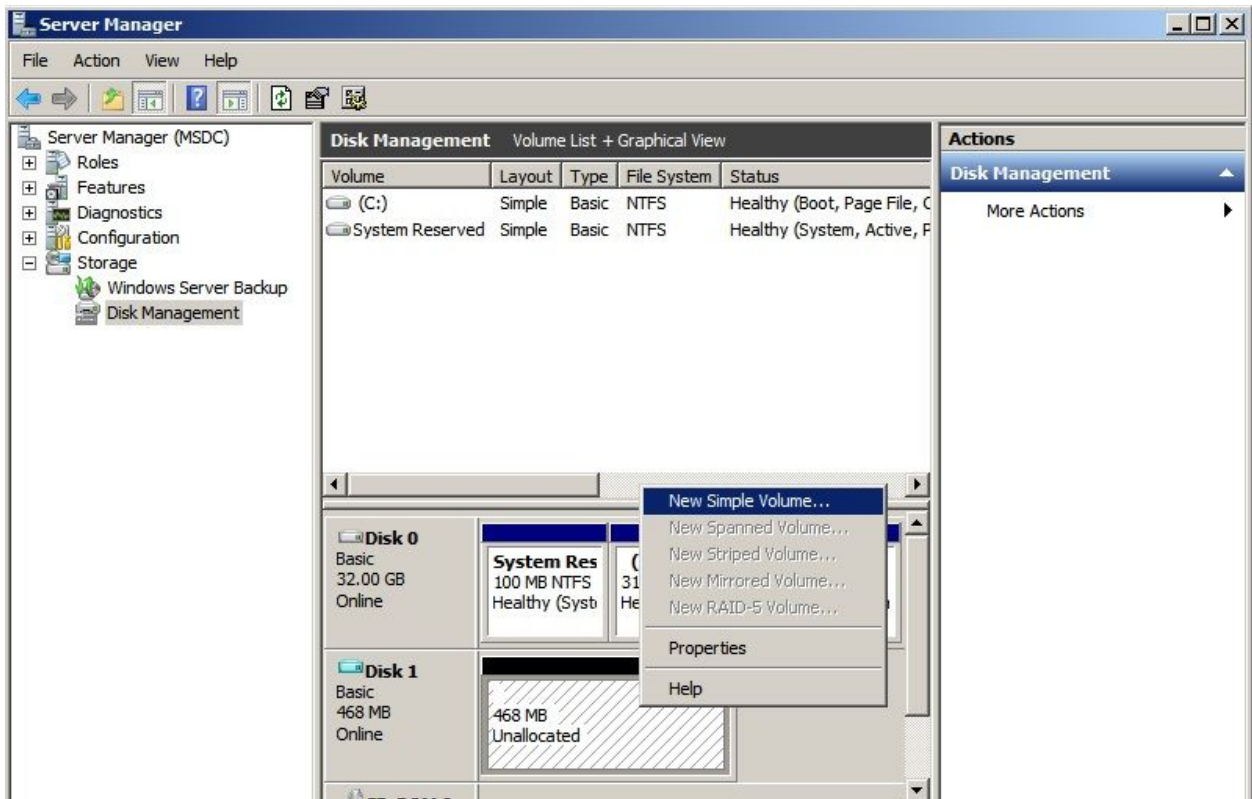
2. Next, you need to create a VHD image into a network drive for emulating a native NTFS file system and allowing it to be managed by a Domain Controller. Open Server Manager ----> Disk Management and create it.

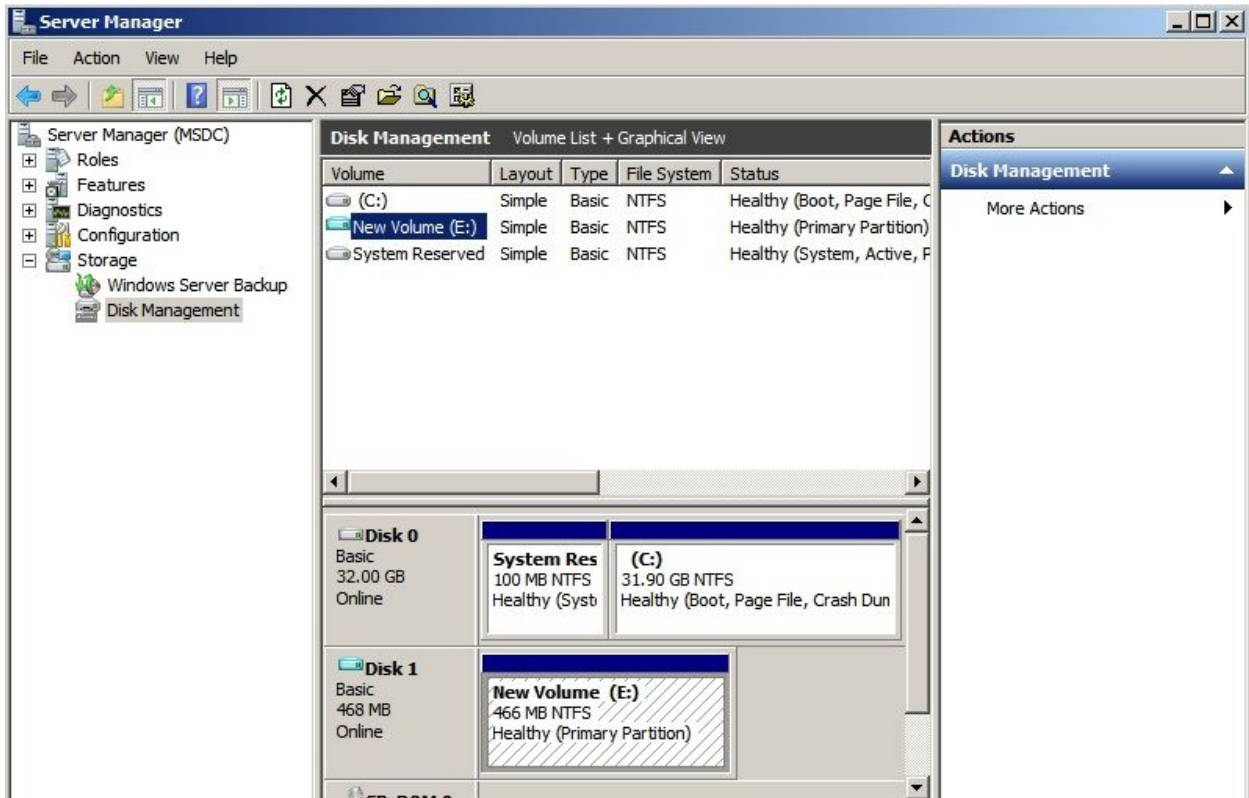




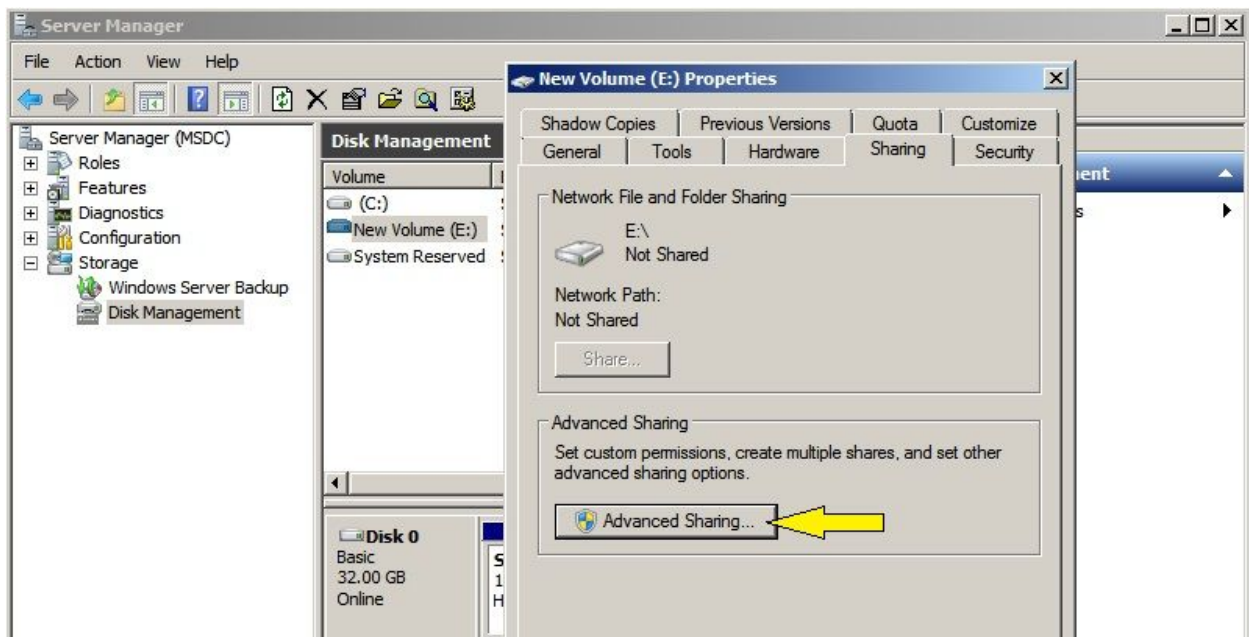


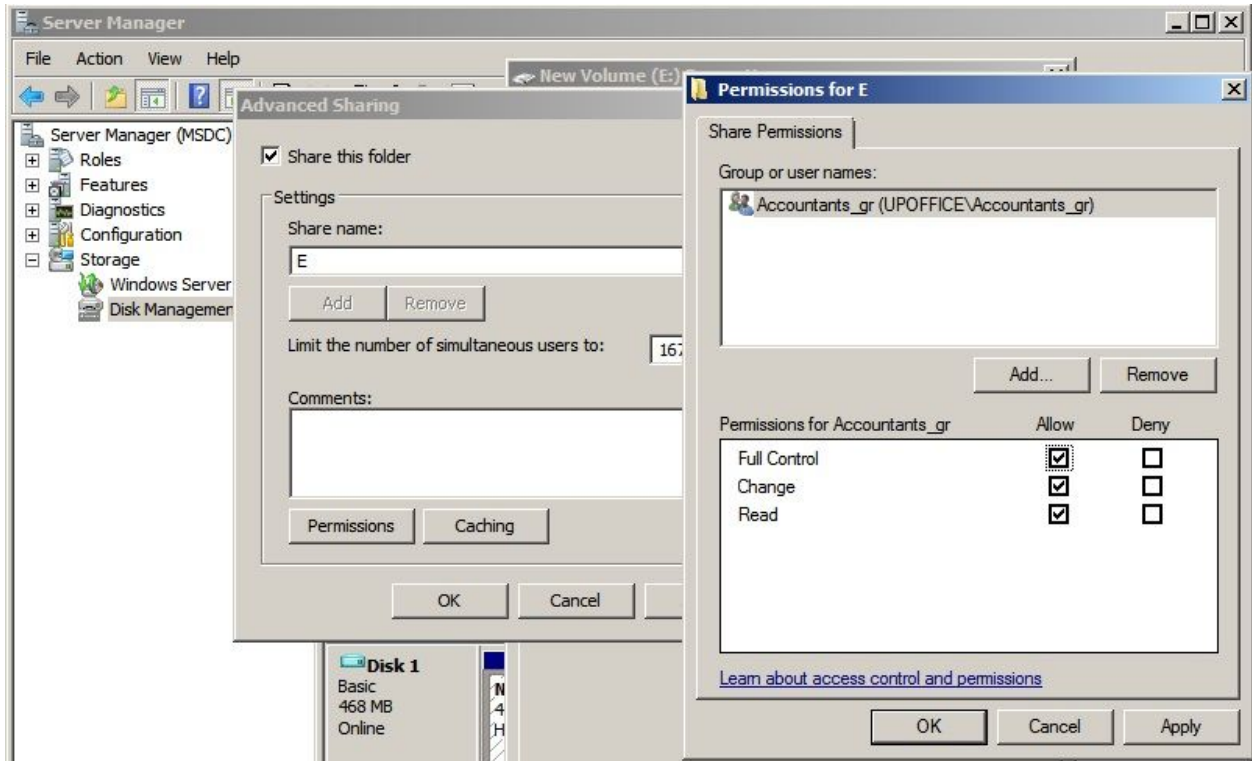
Create NTFS file system on it.





3. Virtual Disk with native File system created. You can share it to Domain.
Right Click on Mouse Button ----> Properties





4. That is it. Now we can reach this disc from clients computer.

