

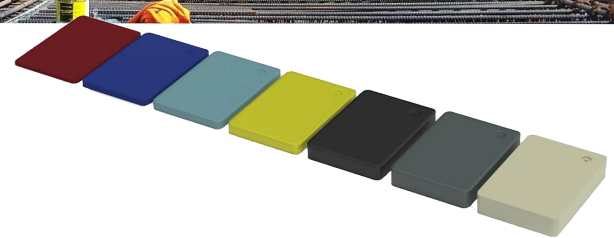
## PSA PACKING SHIMS

*Tested and proven to take compressive loads of up to 20 tonnes.*

Designed for packing underneath concrete precast or tilt-up panels, to gain alignment with a non-skid surface.

Colour coded by thickness for ease of selection.

Shims are manufactured from quality plastic and tested with compressive loads up to 20 tonnes.

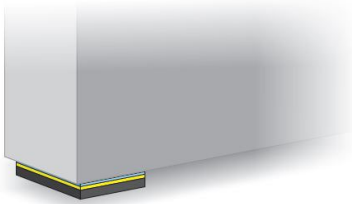


### KEY BENEFITS

- Colour Coded Sizes.
- Moulded in grip.
- Lightweight design.
- Made in NZ

### USAGE

Ideal for: Commercial and civil applications such as packing under panels, machines, doors and window frames.



### DETAILS

CODE	DESCRIPTION	BAG QTY
94 405	1mm Red Packing Shim	100
94 407	Large 1mm Brown Packing Shim	200
94 410	3mm Blue Packing Shim	100
94 412	Large 2mm Blue Packing Shim	200
94 415	Large 3mm Green Packing Shim	50
94 417	Large 5mm Yellow Packing Shim	100
94 422	Large 10mm Black Packing Shim	40
94 425	15mm Grey Packing Shim	40
94 430	20mm White Packing Shim	30