

aocheng
HARDWARE



**YONGJIA AOCHENG
HARDWARE CO.,LTD**

Transfer Pump Series
Fuel Dispenser Accessories Series
Flow Meter Series



YONGJIA AOCHENG HARDWARE CO.,LTD

Tel: +86 13958764193

E-mail: sales@ao-cheng.com

Website: www.ao-cheng.com



Certificates



Aocheng Company Introduction

YONGJIA AOCHENG HARDWARE CO., LTD. which was established in 2007, and has been manufacturing fuel nozzle, transfer pump, flow meter and fuel dispenser parts over many years.

After our factory certificated by ISO9000-2000 in the year 2009, and most of products get CE in 2008.

There are also many products that are under process of UL approval now. Some of the main activities and products of our company are below.

At present, Our Company exports 70% of our products, which are produced by our professional staffs and labors. We hope to share our ingenious and collaborative spirit that enables our company to succeed.

Contents



TRANSFER PUMP SERIES

DC Transfer Pump	01-03
AC Transfer Pump	04-06
UK-Proof Pump	07
SR-CBY Pump	08
Advisor Field	09
D4 Nozzle	10-11



FUEL DISPENSER ACCESSORIES SERIES

Automatic Nozzles	12-16
Manual Nozzle	17
IRG Nozzle	18
Flow Meter	19
Submersible turbine pump	20
Nozzle Holder	21
Breakaway	22
Service	23
Rotary Solenoid	24



FLOW METER SERIES

Positive Displacement Flow Meter	26-27
Oval Gas Meter	28
Measuring Nozzle	29
Turbine Measuring Nozzle	30
Machinary Meter	31
Measuring Foot	32
D4 Tank Accessories	33-34
Quick Coupling	35
Haize Reel	36

TRANSFER PUMP SERIES

website: www.ac-pump.com



DC Transfer Pump

DCFD40



DC Pump

This DC big flow rate pump is fueling the diesel, kerosene, not for gasoline. And its pump head with iron material, and with 100% copper line, its specification as follows:

- A. With CE Certification, and IP54 Protection
- B. Pump with By pass and Self priming
- C. 4m Delivery hose and 1.5m suction hose
- D. Filter or Check valve

Model	DCFD40	DCFD60	DCFD80
Flow rate	40L/min	60L/min	80L/min
Voltage	12v or 24v	12v or 24v	12 or 24v
Deliver hose	4m	4m	4m
Manual nozzle	Yes	Yes	Yes
Filter	Yes	Yes	Yes
Suction hose	1.5m	1.5m	1.5m

Note: Above sheet is standard one. we may install flow meter FM-120-1, automatically nozzle AC-11A, 1.5m suction hose and check vale according to customer requirement.



DCTP40



DCTP60



DCTP80

Item	Flow Rate	Voltage	Power (w)	Max Pressure	Suction Length
DCTP40	40L/Min	12v or 24v	150	3bar	5m
DCTP60	60L/Min	12v or 24v	200	3bar	5m
DCTP80	80L/min	12v or 24v	250	3bar	5m

DC Transfer Pump

DCTP70

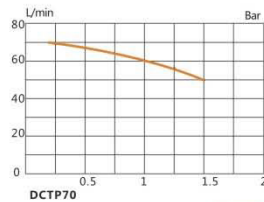


■ DCTP70

This pump is fueling the diesel, kerosene, not for gasoline. And its pump Head with Aluminum, and with 100% copper line, its specification as follows:

- A. With CE Certification. And IP54 Protection
- B. Pump with By pass and Self priming
- C. thermal overload protection
- D. Filter and connectors

Model	Voltage V	Flow rate	Motor running (RPM)
DCTP70	24v	40L/Min	1400
	12v	70L/min	2800



DCTP40A



■ DCTP40A

This pump is smart pump, and designed the switch on the hand, and with yellow outside shell protection! And dirty oil viewer

Model	Voltage V	Flow rate	Motor running (RPM)
DCTP40A	24v or 12v	40L/min	2800

■ DCFD40A



Model	Voltage	Flow rate	Motor (RPM)	Manual nozzle
DCF40A	24v or 12v	40L/Min	2800	YES

AC Transfer Pump

ACFD60



■ AC Pump

This AC big flow rate pump is fueling the diesel, kerosene, not for gasoline. And its pump head with iron material, and with 100% copper line, its specification as follows:

- A. With CE Certification. and IP54 Protection
- B. Pump with By pass and Self priming
- C. 4m Delivery hose and 1.5m suction hose
- D. Filter or Check valve

Model	ACFD40	ACFD60	ACFD70	ACFD80	ACFD100
Flow rate	40L/min	60L/min	70L/min	80L/min	100L/min
Power	375w	550w	550w	550w	1Kw
Deliver hose	4m	4m	4m	4m	4m
Manual nozzle	Yes	Yes	Yes	Yes	Yes
Filter	Yes	Yes	Yes	Yes	Yes

Note: Above sheet is standard one, we may install flow meter FM-120-1, automatically nozzle AC-11A, 1.5m suction hose and check vale according to customer requirement.



ACTP80



ACTP60



DCTP40

Item	Flow Rate	Voltage	Power (w)	Max Pressure	Suction Length
ACTP40	40L/Min	230v	375	3bar	5m
AC-TP60	60L/Min	230v	550	3bar	5m
AC-TP70	70L/Min	230v	550	3bar	5m
AC-TP80	80L/Min	230v	550	3bar	5m
AC-TP100	100L/min	230v	1000	3bar	5m

AC Transfer Pump

ACFD60A



■ **ACFD60A**

This AC big flow rate pump is fueling the diesel, kerosene, not for gasoline. And its pump head with iron material, and with 100% copper line, its specification as follows:

- A. With CE Certification. And IP55 Protection
- B. Pump with By pass and Self priming
- C. 4m Delivery hose and 2m suction hose
- D. Filter or Check valve

Model	ACFD60A	ACFD80C
Flow rate	60L/min	80L/min
Voltage	230v	230v
Deliver hose	4m	4m
Auto nozzle	Yes	Yes
Filter	Yes	Yes

ACFD80A



■ **ACFD80A**

Medium	Diesel, Kerosene
Flow Rate of Pump	0L/min-80L/min
Working Voltage	AC220V, 110V, 12V, 24V
Motor Power	550W, 150W
Working Pressure	3Bar
Precision of Flow meter	±0.2%
Inlet & Outlet	Inlet BSPF1" Outlet BSPF1"
One-time Count Range	Volume(0.00-99999.99)Liter Amount (0.00-99999.99) ¥
Total Count Range	Volume(0.00-99999.99)Liter Amount (0.00-99999.99) ¥

ACFD80B



■ **ACFD80B**

This type combined by Nozzle, Display, Keyboard, Bennett Flow meter

Technical index and parameter

Medium	Petrol
Ambient temperature	-25°C ~ +55°C
Humidity	≤95%
Max flow	50L/min or 90 L/min
Accuracy	±0.3%
Repeating error	≈0.15%
Power	Dc12v or Dc24v
Single volume range	0.01 ~ 9999.99
Accumulative volume range	0.01 ~ 9999999999.99
Explosion-proof sign	Exdm (ib) Ib II AT3

AC Transfer Pump

ACJZ40A



■ **ACJZ40**

This smart fuel pump is fueling the diesel, kerosene, not for gasoline. Very popular in Poland market. And its pump head with iron material, and with 100% copper line, its specification as follows:

- A. With IP55 protection
- B. With emergency shut off switch
- C. Convince to use and light.
- D. CE certification
- E. Color: Black, Blue, Yellow

Model	ACJZ40A	ACJZ40B
Body Material	Cast Iron	Cast Iron
Maximum flow rate	40LPM	40LPM
Self Priming	NO	Yes
Voltage	230v, 110, +/-10V	230v, 110, +/-10V
Foot Valve	YES	YES
Pump	ACJZB40A	ACJZB40B



ACJZB40A



ACJZB40B

Item	Flow Rate	Voltage	Power (w)	Max Pressure	Self priming	color
ACJZB40A	40L/Min	230v	600	3bar	No	Yellow, Blue, Red
ACJZB40B	40L/Min	230v	600	3bar	Yes	Yellow, Blue, Red

EX-Proof Pump

DCEX56



DCEX56

This 12V Ex-Proof pump is especially for fueling the GASOLINE. And its pump head with iron material, and with 100% copper line, its specification as follows:

- A. With Ex-Proof Protection
- B. Pump with By pass and Self priming
- C. thermal overload protection
- D. Filter and connectors
- E. 30-minute duty cycle/not for continuous operation

Model	DCEX56	DCEX75
Maximum flow rate	15GPM(57LPM)	20GPM(76LPM)
Explosion-proof motor	1/4HP	1/4HP
Voltage	Dc12v or DC24v	
Threaded tank adapter	2"NPT	2"NPT
Nozzle hanger	Yes	Yes

ACEX70



ACEX70

This 220V Ex-Proof pump can installed with FM-40G meter in gallons or FM-120 meter in liters, Turbine low meter nozzle or automatic nozzle, or oval gear meter nozzle, etc, like Application picture

Model	ACEX70
Voltage	220v, 50hz
Body Material	Cast Iron
Maximum flow rate	70L/Min
Explosion-proof motor	1/3HP
Inlet	1"
Outlet	1"
Motor Speed	1725RPM

ACEX70A

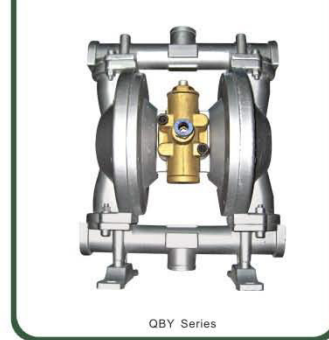


SB QBY Pump

SB Pump



QBY Pump



SB Pump

Item	Model	Flow L/min	Head m	Power Kw	Size in/in	Inpeller/outle material	Pump tube material
Manual Pump	TS-32	40			50/32	Iron	Iron
	TS-25	30			50/25	Iron	Iron
Electric Transfer Pump	SB-1-1	110	7	0.88	50/25	Plastic	SSS
	SB-1-3	110	7	0.88	50/25	SS	SS
	SB-7	100	7	0.55	41/25	Plastic	SS
	SB-6	100	7	0.55	41/25	SS	SS
	SB-3	150	10	0.88(EX)	50/25	Plastic	SS
	SB-3-1	150	10	0.88(EX)	50/25	SS	SS
	SB-2	130	7.5	1.1	50/25	Plastic	Aluminum
	SB-4	150	10	0.88(EX)	50/25	Plastic	Aluminum
Drum Pump	JK-3B	50	2.5	0.12	55/20	Plastic	Aluminum
	JK-3BS	50	2.5	0.12	55/20	Plastic	SS

QBY Pump

Item	Discharge rate (m ³ /H)	Max Lift (m)	Suction (m)	Max air diameter (mm)	Max air pressure (kg/cm ²)	Air source waster rate (m ³ /min)
QBY-10	0.08	0-50	5	1	7 bar	0.3
QBY-15	0-1		5	1		0.3
QBY-20	0-1.5		6	1.5		0.5
QBY-25	0-2.4		7	2.5		0.6
QBY-32	0-5		7	3.5		0.7
QBY-40	0-8		7	4.5		0.6
QBY-50	0-12		7	8		0.9
QBY-65	0-16		7	8		0.9
QBY-80	0-24		7	10		1.5
QBY-100	0-30		7	10		1.5

Adblue Field

ACAD40



■ Adblue Pump

- A. Permanent magnet and continuous duty.
- B. Built-in Pressure switch automatically starts and stops pump when faucets is opened and closed.
- C. Self-priming so pump can be located above water tank
- D. Runs dry for extended periods of time without damage
- E. Holding excellent motor keep stable temperature of the pump body

Model	ACAD40	DCAD40
Pump Body Material	EPDM	EPDM
Maximum flow rate	40LPM	40LPM
Voltage	230v	12v or 24v
Self Priming	Yes(2.8bar)	Yes(2.8bar)
Medium	Urea, Adblue	Urea, Adblue

DCAD40



Adblue Meter



Adblue hose



AdblueNozzle(A)



Adblue Nozzle(M)

Item	Flow rate	Auto or Manual	Inlet out	Outlet	
AdblueNozzle(A)	60L/Min	Auto	3/4"	1/2"	
Adblue Nozzle(M)	80L/Min	Manual	3/4"	1/2"	
Adblue Meter	100L/Min		1"	1"	Tubine
Adblue hose	100L/Min		1"	1"	EPDM

Oil Nozzle

OILN01



OILN01

OILN01-B

■ OILN01

OILN01-Oil nozzle easily combined with oil meter to measure and construction of aluminum body swivel, and a in-built balanced valve.

Model	AC-OILN01	AC-OILN02
Pump Body Material	Aluminum	Aluminum
Maximum flow rate	15LPM	15LPM
Working pressure	0.8mpa	0.8mpa
Max working pressure	10mpa	10mpa
Balance valve	Yes	Yes
Automatically nozzle spout	Yes	Rubber Spout
Spout Swivel Angle	360	Fixing
Inlet	1/2"	1/2"

OILN01 SERIES



OILS01

OILS02

OILS03



OILH01



OILH02



OILN02

OILN02-oil nozzle easily combined with oil meter to measure and construction of aluminum body swivel, and a in-built balanced valve.

Oil Nozzle

OILN03



OILN03

With oval gear meter for controlling and measuring high viscosity, such as, lubrication, oil, with advantage of high precision and low pressure loss, compact light weight design and easy installation. And it is with LCC display, 5-digit sub-total, with floating point from 0.001 to 999.99, 8 digital non-resettable tantalizer.

Model	OILM01	OILM02	OILM03
Inlet & Outlet	BSPF1/2"	BSPF1/2"	BSPF1/2"
Accuracy	+/-0.5%	+/-0.5%	Output with pulse
Repeatability	0.2	0.2	
Max working pressure	7mpa	7mpa	7mpa
Discharge rate per revolution	25ml/r	25ml/r	25ml/r
Battery power	2x1.5v	2x1.5v	2x1.5v
Flow rate	1-30L/min	1-30L/min	1-30L/min



OILP01

Electric gear oil pump is designed for various requirements of pumping lubricants, with the construction of die cast aluminum pump body, by pass valve, sintered steel gears, mechanical seal on the motor shaft, with the advantage of quiet operation, high suction capacity/compact design.

Model	OILP01
Flow rate	BSPF1/2"
Pressure	+/-0.5%
Noise	0.2
Power	7mpa
Vacuum	25ml/r

FUEL DISPENSOR ACCESSORIES SERIES

website: www.ac-pump.com



Automatic Nozzle

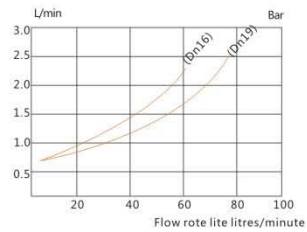
AC-11A



AC-11A

AC-11A Automatic Nozzles are made of alloy aluminum and designed with today's customer in mind. Small, trim, light weight, easy and convenient to use.

Inlet Thread	BSPF/NPT 3/4"
Diameter of spout	3/4" & 1/2"
Color of insulator	red/green/blue/yellow/black
Package	10pcs/carton
Net Weight	13kg
Gross Weight	14kg
Dimension	420×340×400mm



AC Adblue



AC Adblue

This auto nozzle is made of stainless steel 316, and all sealing parts are Viton, It has good features for the Acid material, Urea, Adblue etc.

Inlet Thread	BSPF/NPT 3/4"
Diameter of spout	1/2"
Color of insulator	blue
Package	10pcs/carton
Net Weight	23kg
Gross Weight	25kg
Dimension	420×340×400mm

Automatic Nozzle

AC-11B

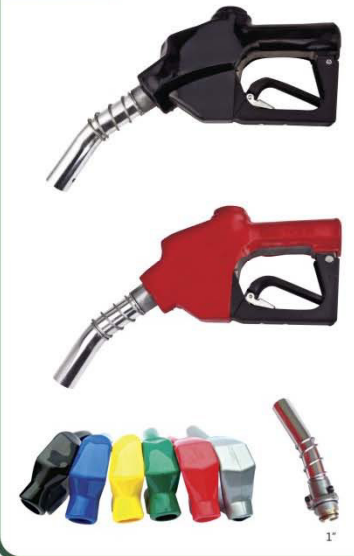


AC-11B

AC-11B Automatic Nozzles are designed specially for self-service pre-pay of card-lock system to help prevent gasoline spills. The AC-11B can not be opened until the pumping system is pressurized and closes automatically when the pressure is removed. This means the AC-11B is closed when placed back to the dispenser. Accurate flow control allows your customers to top off their tank to the exact amount they want, and it's easy to stop gasoline flow precisely.

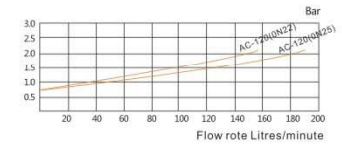
Inlet Thread	BSPF/NPT
Diameter of spout	3/4" & 1/2"
Color of insulator	red/green/blue/yellow/black
Package	10pcs/carton
Net Weight	13kg
Gross Weight	14kg
Dimension	420×340×400mm

AC-120



AC-120

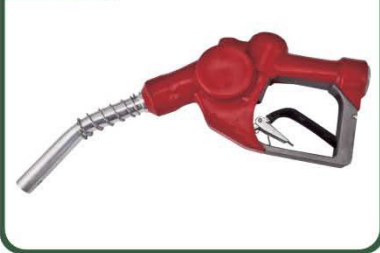
AC-120 Automatic Nozzles are made of alloy aluminum. Heavy-duty high-flow nozzle, for fueling truck, bus. Low cost, long life and durability.



Inlet Thread	BSPF/NPT1"
Diameter of spout	1"
Color of insulator	red/green/blue/yellow/black
Package	10pcs/carton
Net Weight	17kg
Gross Weight	18kg
Dimension	420×340×400mm

Automatic Nozzle

AC-BADA



AC-BADA

AC-BADA with whole spout to avoid leakage after service long time. The main valve is sealed in two layers to avoid being difficult to run the nozzles when working pressure is too high. The nozzle can be controlled in three grades only with one hand.

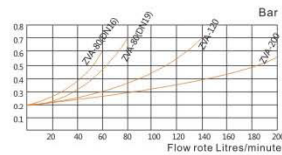
Inlet Thread	BSPF/NPT 3/4"
Diameter of spout	3/4" & 1/2"
Color of insulator	red/green/blue/yellow/black
Package	10pcs/carton
Net Weight	13kg
Gross Weight	14kg
Dimension	420×340×400mm

AC-ZVA80



AC-ZVA80
AC-ZVA120

AC-ZVA80 and AC-ZVA120 with tight structure, cute appearance, reduction of pressure loss and increase of the flow. Accurate flow control: allows your customers to top off their tank to the exact amount they want, and it's easy to stop gasoline flow precisely.



AC-ZVA120



Mould	AC-ZVA80	AC-ZVA120
Inlet Thread	BSPF/NPT 3/4"	BSPF/NPT 1"
Diameter of spout	3/4"	1"
Color of insulator	red/green/blue/yellow/black	red/green/blue/yellow/black
Package	10pcs/carton	10pcs/carton
Net Weight	13kg	17kg
Gross Weight	14kg	18kg
Dimension	420×340×400mm	420×340×400mm

Automatic Nozzle

AC-150



AC-150

Longer Spout Auto nozzle with high flow, bulk fuel oil delivery service, the biggest advantage is with longer spout, it is used for filling truck, big bus. Flow rate: 150L/min, Spout Length: 350mm, inlet: 1", outlet: 1"

Inlet Thread	BSPF/NPT 1"
Diameter of spout	1"
Color of insulator	red/green/blue/yellow/black
Package	10pcs/carton
Net Weight	14kg
Gross Weight	15kg
Dimension	420×340×400mm

AC-200



AC-200

AC-200A Automatic Nozzles are made of alloy aluminum and designed with big flow rate, and the max flow rate is 260L/min.

Outlet	38mm
Flowrate	260L/min
Inlet	BSPF/NPT 1.5"
Package	10pcs/carton
Net Weight	24kg
Gross Weight	25kg
Dimension	350×350×520mm

AC-250



AC-250 Manual Nozzles
AC-290

AC-250 and AC-290 nozzle with high flow, bulk fuel oil delivery service, and body with cast aluminum, seals with Buna-N, Viton, main stem: stainless steel

Item	AC-250	AC-290
Spout Outlet	Aluminum 38mm	Aluminum 38mm
Flowrate	260L/min	290L/min
Inlet	BSPF/NPT 1.5"	BSPF/NPT 1.5"
Package	8pcs/carton	8pcs/carton
Net Weight	23kg	20kg
Gross Weight	25kg	24kg
Dimension	350×350×520mm	350×350×520mm

AC-290



Manual Nozzle

AC-2000



AC-12A



AC-13A



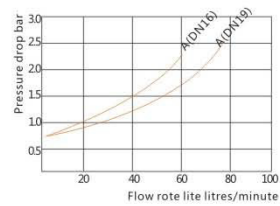
AC-5000



Manual Nozzle

For AC-2000, AC-13A, AC-14A Manual Nozzles are made of alloy aluminum and designed with today's customer in mind. Small, trim, light weight, easy and convenient to use.

Inlet Thread	BSPF/NPT 3/4 or 1"
Diameter of spout	1" & 3/4"
Surface treatment	Sand blast or Vibrations
Package	10pcs/carton
Net Weight	13kg
Gross Weight	14kg
Dimension	420×340×400mm
Hose swivel	AC2000,AC13A



Chemical Nozzle

For AC-5000, AC-6000 Manual plastic Nozzles are made of PP, EDPM and designed with today's customer in mind. Inlet: 3/4" and outlet is 3/8", and it can fill kind of chemical material, Adblue urea especially use in farm.

AC-6000



LPG Nozzle

LPGNA



LPGNB



LPG Break Away



LPG Nozzle

LPG nozzle use friendly single-action operation entire fueling operation is initiated by simply engaging nozzle to the rece ptacle with a single squeeze of the hand. Hammer-Lock technology maximum durability. Designed specifically for frequent coupling and uncoupling. Ergonomic design insulated handle protects operator from temperature effects created by high flowing LP gas. Minimal force required to engage nozzle. Durable construction heavy-duty brass, aluminum and stainless-steel construction provides excellent corrosion resistance in the harsh fueling environment. Ease of use Incorporates with a single plane 360° inlet swivel.

LPGNB Nozzle

Maximum Operating Pressure	350psi
LPG Discharge on Disconnect	4.3cc
Temperature Range	-40°C ~ 85°C (-40°F ~ 185°F)
Coupling Style	Italian Style
Body	Aluminum
Internal Components	Brass/Steel
External Components	Brass/Stainless Steel
Package	10pcs /carton
Net Weight	20 Kg
Gross Weight	21Kg
Dimension	360×320×320 mm

LPG Break Away

Thread	M27×1.5
Material	Stainless Steel
Max.Pull	120Bar
Flow Rate	5-50L/min

Flow Meter

RSJ-50



RSJ50

RSJ-50 is same function with Bennett flow meter. 4 pistons, and machinery sealing, you can use 10,000,000 liter without the mending!

Flow Rate	5L-60L/min
Discharge Rate Per Revolution	0.5L
Adjustable Minimum Volume	0.05%
Accuracy	±0.2%
Repeatable Tolerance	≤0.05%
Package	2pcs/carton
Net Weight	10kg
Gross Weight	10.5kg
Dimension	420×260×230mm

ZYB-50



ZYB50 ZYB80

ZYB-50/ZYB-80 Vane Pump, built in air separator, by pass valve, filter, is with three different top covers for different connecting pipes. A type, B type and C type. With the advantage of low noise, high flow rate, long life service, etc

Model	ZYB-50	ZYB-80
Speed	630mp	630mp
Flow Rate	45L/min ~ 65L/min	75L/min ~ 85L/min
Vacuum	≥0.054MPa	≥0.054MPa
Noise	≤72dB	≤72dB
Working Pressure	0.16 ~ 0.2MPa	0.2 ~ 0.25MPa
Package	1pcs/carton	1pcs/carton
Net Weight	17kg	17kg
Gross Weight	17.5kg	17.5kg
Dimension	340×260×370mm	340×260×370mm

Motor 50



Ex-proof Motor

1. This Motor has been approved by China National Explosion Proof Electronic appliance TEST Center
2. It is suitable for use in places where three phase electricity power source is not available
3. Technical Data:
Power: 750W
Electricity Currency: 5.1A
4. Speed: 1400/W

Submersible turbine pump

STP-240



Submersible turbine pump

- A. Best performance, long time, service, lower noise
- B. Easy to install and service, quick, simple, safe electrical connection.
- C. Manifold allows for vertical or horizontal discharge.
- D. Save, lower service cost.
- E. Built in check valve, by pass valve, vacuum valve.
- F. For diesel, gasoline, kerosene, etc.
- G. vapor-free, suction head longer than suction pump.

Rating pressure	0.1MPa
Max flow rate	200L/M, 240L/M
rotate speed	2820mp
voltage	220v 50hz
currency	9A
power	1.1KW/1.5H, 1.3KW/1.8H
Ex-proof class	IPx6
Fixation thread	BSPF, NPT 4"
inlet	BSPF, NPT 1.5"
outlet	NPT 2"
Adjustable pressure	21kpa-207kpa
Factory pressure range	79kpa-93kpa
working pressure	34kpa

Emergency shut off valve

Working Pressure	0.2MPa
Valve Closing Speed	0.5S
Working Temperature	-30°C ~ 55°C
Flow Range	0 ~ 120L/min
Poppet Valve	Single or double
Inlet	BSPF 1.5"
Outlet	BSPF 1.5"
Thread	Male/Female
Package	10pcs/carton

Angle check valve

Material Body	Cast iron
seals	Buna-N
Inlet	BSPF/NPT 1.5" or 2"
Outlet	BSPF/NPT 1.5" or 2"



AC-11

AC-09

Nozzle Holder



Nozzle Holder

This type nozzle holder with hall switch, and Ex-proof and CE switch, and its tech details as follows:

Material	Cast Aluminum
Package	10pcs/carton
Net Weight	7Kg
Gross Weight	8Kg
Dimension	450×420×400mm



Solenoid Valve A

Solenoid Valve B

Solenoid Valve A/B

- compact structure, beautiful appearance, leakage quantity is zero.
- it's use in computerized dispenser.

Item	A	B
Package	15pcs/carton	15pcs/carton
Net Weight	13.5Kg	12Kg
Gross Weight	16Kg	14Kg
Dimension	430×360×270mm	430×360×270mm



Pulse

Pulse is 60 and 100 Pulses Available, Output signal as required.

Package	30pcs/carton
Net Weight	12Kg
Gross Weight	13Kg
Dimension	420×340×400mm
Voltage (V+)	+5-36VDC

Breakaway



AC-3

AC-7

AC-3/AC-7

AC-3/AC-7 Breakaways built with check valve are used for Connecting the hose and the dispenser. When the pull is too strong, the breakaway will be broken and closed automatically to avoid the fuel flowing.

Model	AC-3	AC-7
Thread	BSPF/NPT	BSPF/NPT
Diameter	"3/4 & 1"	3/4"
Max.Pull	3/4": 250LBS±0.5% 1": 300LBS±0.5%	3/4": 250LBS±0.5%
Flow Range	3/4" : 0 ~ 60L/min 1" : 0 ~ 90L/min	3/4" : 0 ~ 60L/min
Package	100pcs/carton	100pcs/carton
Net Weight	3/4" : 28kg 1": 32kg	3/4" : 30kg
Gross Weight	3/4" : 29kg 1": 33kg	3/4" : 31kg
Dimension	520×280×280mm	520×280×280mm



Swivels



AC-45A

AC-45B

AC-45C

AC-45A, B, C

AC-45A, B, C, Swivels Used for connecting the nozzle and the hose, 360° swivel action.

Item	AC-45A	AC-45B	AC-45C
Thread	BSPF/NPT	BSPF/NPT	BSPF/NPT
Diameter	3/4" & 1"	3/4" & 1"	3/4" & 1"
Package	50pcs/carton	50pcs/carton	50pcs/carton
Net Weight	23kg	18kg	18kg
Gross Weight	24kg	19kg	19kg

Swivels

AC-NS



AC-NSA

AC-NSB

AC-NS

NS-1 Swivels used for AC-11A Automatic Nozzle and AC-120 Automatic Nozzle.

Item	Inlet(Female)	Outlet Male
01	3/4"	3/4"
02	1"	3/4"
03	1"	1"
04	1.5"	1.5"

Oil Viewer



AC-SYQ-1

AC-SYQ-2

AC-SYQ Swivels

Item	SYQ4	
Inlet Thread	BSPF/NPT	
Diameter	3/4" & 1"	
Package	200pcs/carton	
Net Weight	3/4" : 24kg	1" : 29kg
Gross Weight	3/4" : 26kg	1" : 31kg
Dimension	3/4" : 480×250×350mm	
	1" : 470×250×410mm	



AC-SYQ-3



AC-SYQ-4

Foot Valve



AC-13

Valve Closing Speed:
0.5S
Working Temperature:
-30°C ~ 55°C
Thread:
BSPF/NPT 1.5"

Rotary Swivels

AC-HS-1A



AC-HS-1AS

AC-HS-1A

HS-1A, HS-1B

HS-1A Rotary Swivels, Used for connecting the nozzle and the hose, 360° swivel action, HS-1B. Un-rotary Swivels Used for connecting the nozzle and the hose.

Item	HS-1A	HS-1B
Thread	BSPF/NPT	BSPF/NPT
Diameter	3/4" & 1"	3/4" & 1"
Package	50pcs/carton	50pcs/carton
Net Weight	23kg	18kg
Gross Weight	24kg	19kg

AC-HS-1B



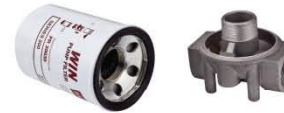
AC-HS-1BS

AC-HS-1B

Filter and Holder

Item	Holder	Filter	Filter with holder
Material	Aluminum		
Filter thread	UNF15"	UNF15"	
Inlet	BSPF/NPT1"		BSPF/NPT1"
Outlet	BSPF/NPT1"		BSPF/NPT1"
Package	50pcs/carton	50pcs/carton	25pcs/carton
Net Weight	14kg	18kg	12kg
Gross Weight	15kg	19kg	13kg
Dimension	330×310×230mm	500×280×350mm	440×500×150mm

Filter and Holder



GL-3

GL-1

Filter



GL-4-Y

GL-4

Filter



AC-15

AC-16

FLOW METER SERIES

website: www.ac-pump.com



Positive Displacement Flow Meter

M-50-1



M Series

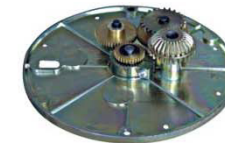
It is with excellent stepless adjusting mechanism allows a micro adjustment of the meter.
 High accuracy and repeatability over the widest range of flow; Superior accuracy at constant flow.
 Low maintenance, no metal-to-metal contact in measuring chamber, long life service.
 Low pressure loss, a true gravity flow meter.
 Accuracy regardless of pressure fluctuations, temperature variation, viscosity.
 Choice of aluminum, cast iron and stainless steel materials of construction.

Model	M-40-1	M-50-1/M-50H-1	M-80-1/M-80H-1	M-100-1/M-100H-1	M-150-1/M-150H-1
Size	40mm/1.5"	50mm/2"	80mm/3"	100mm/4"	150mm/6" and 100mm/4" for option
Flow Range (L/min)	25-250	38-380/55-550	75-750/15-1150	130-300/170-1700	225-2250/300-3000
Volume Per Rev	0.309L	0.681L	1.839L	5.102L	9.507L
Max Pressure	10bar/150PSI				
Accuracy	±0.2%				
Repeatability	≤0.05%				
Standard Measurement	Liter / US Gallon /IMP Gallon				

Machinery Register



Gear Plate



Positive Displacement Vane Meter

SM-50-1



SM Series

Model	SM-50	SM-80
Size	50mm / 2"	80mm / 3"
Volume Per Revolution	0.4L/0.1US Gallons	2.27L/0.6US Gallons
Max. Flow Rate	400L/min	1333L/min
Min. Flow Rate	40L/min	133.3L/min
Accuracy	±0.2%	
Repeatability	≤0.05%	
Working Temperature Range	-40°C ~ +60°C	
Max. Viscosity	800cps/3850 SSU	

FM-50



FMC Series PD Rotary Vane Flow Meter

Model	FMC-50	FMC-80	FMC-100
Size	50mm / 2"	80mm / 3"	100mm / 4"
Flow Rate(L/min)	38-380	75-750	150-1500
Working Pressure	150PSI		
Accuracy	±0.2%		
Repeatability	0.07%		

OGM-I



OGM-I-40/50/80 Cast Iron Oval Gear Meter

Model	OGM-I-50	OGM-I-80	OGM-I-50
Size	2"	3"	4"
Min. Flow Rate	60L/min	140L/min	160L/min
Max. Flow Rate	300L/min	700L/min	1600L/min
Accuracy	±0.2% or ±0.5%	±0.2% or ±0.5%	±0.2% or ±0.5%
Repeatability	≤0.03%	≤0.03%	≤0.03%
Max. Operating Pressure	1.8MPa	1.8MPa	1.8MPa

Oval Gear Meter

OGM25-D



OGM-25/40/50 Oval Gear Meter

OGM-25/40/50 aluminum oval gear meter has the ability to handle a wide range of fluid viscosities with exceptional levels of repeatability and durability, applying in the petroleum, chemical, food industry etc. and it has big advantages as follows:

- A. Low pressure drop
- B. Compact size, easy maintenance
- C. Easy to read and operate mechanical display
- D. Horizontally and vertically flexibility of installation options
- E. 5-digit sub-total, with floating point from 0.01 to 99999.99, 7-digit non-resettable totalizer.
- F. 3.6V lithium battery power, durable service

OGM25



Model	OGM-25	OGM-40	OGM-50
Size	1"	1.5"	2"
Min. Flow Rate	20L/min	25L/min	30L/min
Max. Flow Rate	120L/min	250L/min	300L/min
Accuracy	±0.5%	±0.5%	±0.5%
Repeatability	≤0.03%	≤0.03%	≤0.03%
Max. Viscosity	1000CPS	1000CPS	1000CPS
Max. Operating Pressure	3.4MPa	1.8MPa	1.8MPa

OGM25-P



Spare Part



OGM25-C



Measuring Nozzle

LLY Nozzle



LLY Nozzle

1. LLY serious screw wing type measuring nozzle is the meter to measure volume flow of liquid flowing through pipes. Measurement accuracy:±1%
2. Measured media: Gasoline, If the medium is kerosene, diesel, we should correct it according to the measuring tank, for more correcting details, please check according to item V below.
3. The maximum working pressure:0.1Mpa

Model	Nominal Diameter (mm)	Minimum Flow (L/min)	Nominal Flow (L/min)	Maximum Flow (L/min)	Meter Value
LLY-15	15	15	25	40	1~9999
LLY-25	25	25	35	60	1~9999
LLY-32	32	32	60	100	1~9999
LLY-38	38	38	80	120	1~9999

AC-16A



AC-16A AC-17A

The oval gear meter nozzle is combined by oval meter and self 2000 nozzle to be more convenience for controlling and measuring low, medium, and high viscosity, such as fuel, lubrication oil, with advantage of high precision and low pressure loss, compact light weight design and easy installation. And it is with LCC display, 5-digit sub-total, with floating point from 0.001 to999.99, 8 digital non-resettable tantalizer.

Model	AC-16A	AC-17A
Inlet & Outlet	BSPF1"	BSPF1"
Accuracy	+/-0.5%	+/-0.5%
Repeatability	0.2	0.2
Max working pressure	7mpa	7mpa
Per revolution	25ml/r	25ml/r
Battery power	2x1.5v	2x1.5v
Flow rate	1-80L/min	1-80L/min

AC-17A



Turbine Measuring Nozzle

AC-15A



AC-15A

15A serious screw turbine type measuring nozzle is the meter to measure volume flow of liquid flowing through turbine. For gasoline, kerosene, fueling diesel etc. Measuring nozzle is with high precision, and flexible etc. the best advantage is that we can re-correct the error according to different medium. Measured media: Gasoline, If the medium is kerosene, diesel, we should correct it according to the measuring tank, for more correcting details, please check according to the product instruction

1. Nominal diameter and flow:

Model	Accuracy	Working Pressure	Inlet out let	Maximum Flow (L/min)	Meter Value
15A	±0.5%	0.1Mpa	1"	120	1~9999

2. Color: Red, Black, Yellow, Blue

AC-TM1.5



Turbine Measuring Meter

Model	AC-TM1.5	AC-TM1
Inlet & Outlet	NPT1.5"	BSPF1"
Accuracy	+/-1%	+/-0.5%
Repeatability	0.2	0.2
Max working pressure	7mpa	7mpa
Battery power	2x1.5v	2x1.5v
Flow rate	1-300L/min	1-150L/min

AC-TM1



Machinery Meter

FM-120-1



FM-120-2



FM-120-3



FM-120-4



FM-120

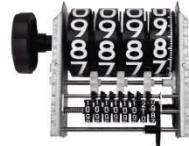
Machinery Flow Meters, designed for metering diesel fuel, gasoline, kerosene, mineral spirits, with the advantage of Large, easy to read numbers, Quick reset knob. Flexible flow ports can be positioned vertically or horizontally. The easy reset register indicates product use up to 999.9 gallons or liters. The master tantalizer registers up to 99999999 gallons or liters.

Item	FM-120-1	FM-120-2	FM-120-3	FM-120-4
Measurement	Litre/US Gallon	Litre/US Gallon	Litre/US Gallon	Litre/US Gallon
Max. Pressure	3 Bar.	3 Bar.	3 Bar.	3 Bar.
Flow Rate	150LPM	120LPM	120LPM	100LPM
Inlet Outlet:	BSPF/NPT 1" or 1.5"	BSPF1"	BSPF1"	BSPF1"
Precision	±1%	±1%	±1%	±1%
Package	6pcs/carto	6pcs/carton	6pcs/carton	6pcs/carton
Net Weight	15Kg	12Kg	12Kg	9Kg
Gross Weight	16Kg	13Kg	13Kg	10Kg
Dimension	520×260×350mm	520×260×350mm	520×260×350mm	520×260×350mm

12V Register



Register



Measuring Tool

MC01



MC02



MC03



MC04



MC05



MC06



Fuel barrel



Oil Taker



Oil Sample Taker



Barrel Cap



Filter



Ball valve



Oil Tank Accessories



Oil Tank Accessories

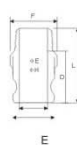
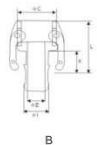
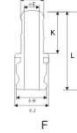
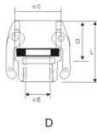
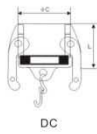


Quick Coupling



Quick Coupling Size

A	B	C	D	E	F	DP	DC
1/2"	1/2"	1/2"	1/2"	1/2"	1/2"	1/2"	1/2"
3/4"	3/4"	3/4"	3/4"	3/4"	3/4"	3/4"	3/4"
1"	1"	1"	1"	1"	1"	1"	1"
1.2"	1.2"	1.2"	1.2"	1.2"	1.2"	1.2"	1.2"
1.5"	1.5"	1.5"	1.5"	1.5"	1.5"	1.5"	1.5"
2"	2"	2"	2"	2"	2"	2"	2"
2.5"	2.5"	2.5"	2.5"	2.5"	2.5"	2.5"	2.5"
3"	3"	3"	3"	3"	3"	3"	3"
4"	4"	4"	4"	4"	4"	4"	4"
5"	5"	5"	5"	5"	5"	5"	5"
6"	6"	6"	6"	6"	6"	6"	6"



Hose Reel



Hose Reel

Hose reel is desgnd for rolling hose in a plate to protect the hose, and save space, keep the room chleaming! And the length: 5m, 10m, 15m.. it is returned back by spring, easy to operate.

Hose Diameter	3/4" or 1"
Medium	Diesel, Koresene, Petrol
Surface treatment	Anti static electricity
Surport angle	12 postion
Working pressure	250psi, 1 Mpa

Deliver Hose/Suction Hose

The deliver hose is made with steel web inside, and it have good features for gas, kerosene and diesel, it have Ex-proof certificationand for both ends, it can add the hose swivals for using on the fuel dispenser.we can cut it with 6m or 4m according to the customer's requirement, and for the suction hose, it is use for diesel from the barrel to the pump.

Item	Deliver Hose	Suction Hose
Size	3/4" or 1"	1"
working pressure	14 bar	14 bar
length	6m, 4m	1.2m, 2m
Material	Rubber	PVC

