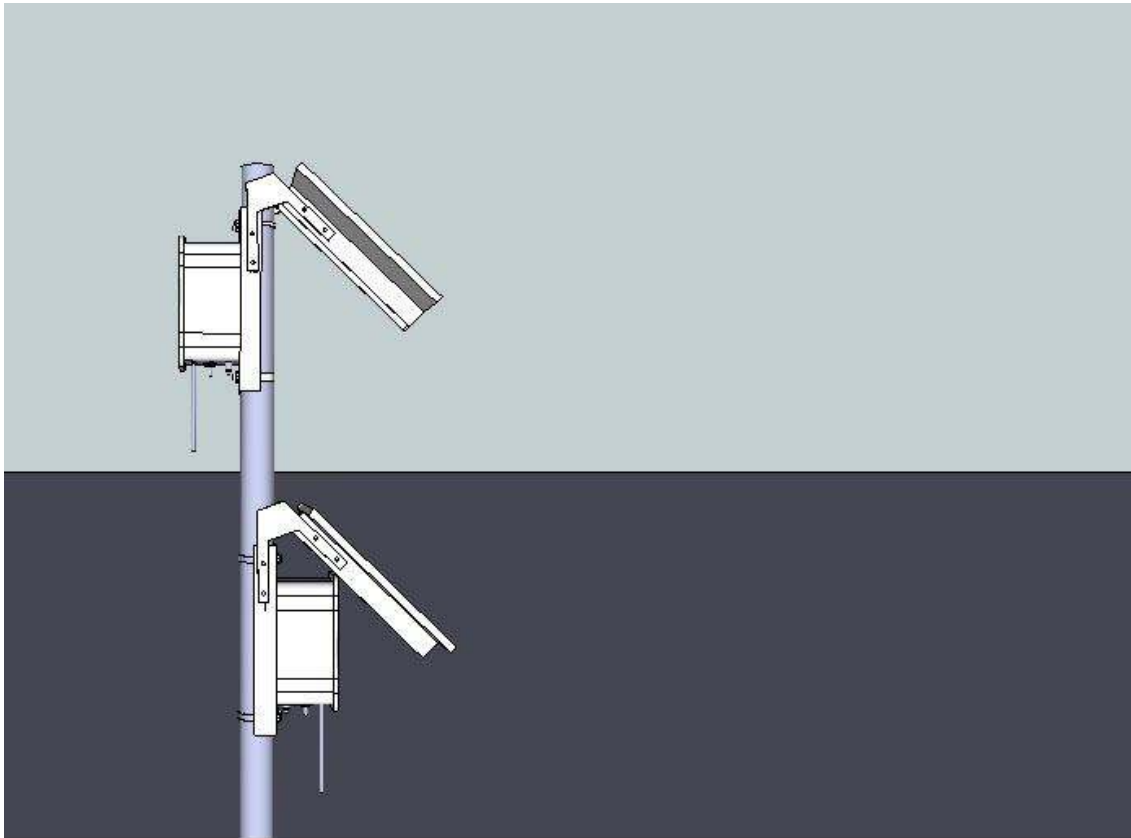


# Flecto Sense Concentrator - FSC v4 Specifications and mounting instructions.



## Technical data and Electrical data

- Battery 3.7 VDC, lithium pack.
- Up to 8 years at  $t_{BAT} < 55\text{ }^{\circ}\text{C}$
- EMC data Fulfil MID class: - E1 and E2 for Wireless M-Bus.
- Unit can operate without a solar panel connected for 3 days.
- Sealed for moisture. No serviceable parts inside.

## Mechanical data

- Metrological class 2
- Ambient class Fulfil OIML R49 class B and O (building/outdoor)
- Ambient temperature  $2...75\text{ }^{\circ}\text{C}$
- Protection class IP65
- Storage temp.  $-5...50\text{ }^{\circ}\text{C}$
- Mast dimensions supported: 25mm to 60mm.

## Material

- All parts are UV protected and weatherproof
- Metal frame - Stainless steel / 3CR12
- Enclosure - Fibreglass reinforced DMC.

## Installation tools required:

- 2x 10 mm spanners, not included. (used for rotating brackets)
- Large Flat-Head screwdriver, not included.

The U-channel can be repositioned based on existing mast accessories.  
See section on **Product configuration**.

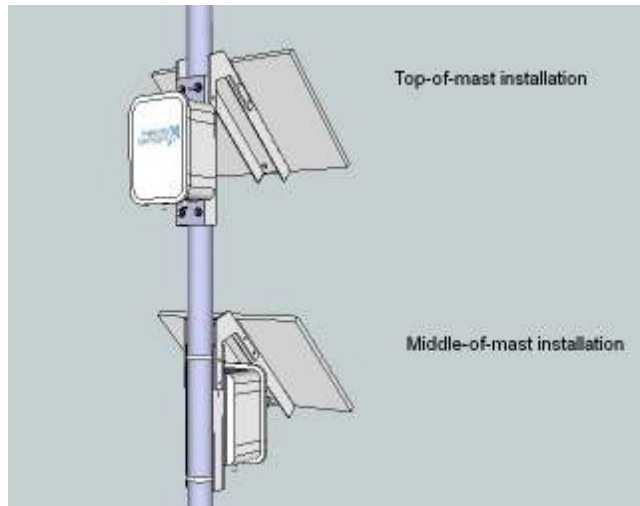
## Packaging

- Product weight 4kg
- Included in the box is everything needed for mounting the unit on a mast
- 2x 40-70mm mast clamps
- Solar panel
- Brainbox with antenna
- Stainless steel frame

## Installation recommendations

- **Note:** *Be careful not to bend the antenna during installation.*
- Ensure that the solar panel has optimum exposure to sunlight. Installations in the southern hemisphere must face north.
- The higher the unit can be mounted the better the coverage area will be.
- Sometimes the higher building across the street will offer better coverage than on the metered premises.
- Ensure that the switch is in the ON position before leaving the site.
- If mounting on a roof, ensure that the unit is fastened to the roof with roof anchors (not included).

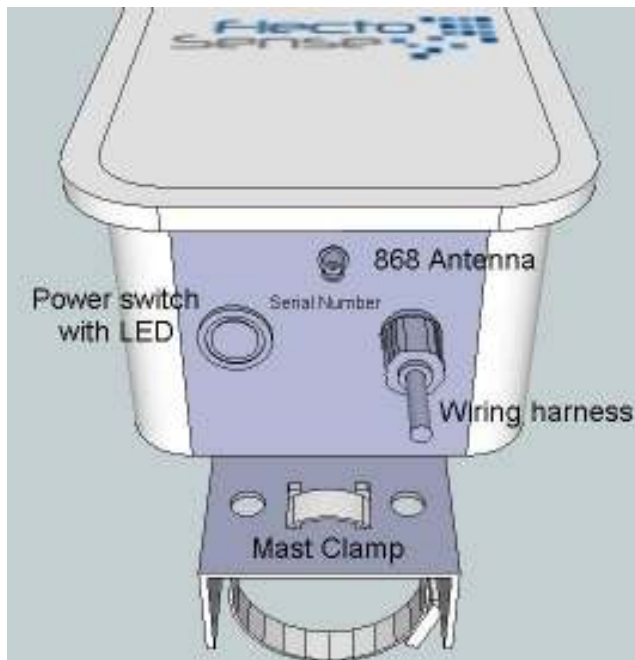
## Product configuration:



When the unit is mounted on the top of a mast longer than 3m, the brackets can be moved around to ensure even weight distribution.

If the mast already has equipment installed at the top, the FSC can be mounted below the equipment. The bracket can be inverted to facilitate Middle-of-mast installations.

**Note:** Leave at least 1 meter (100cm) between the FSC and the next antenna or dish above and below the FSC.



- Before switching the unit on, ensure that you have connected the antenna.

**Note:** Be careful not to bend the antenna during installation.

- Always take a photo of the unit serial number after the installation.

- Ensure that the switch is in the ON position. The orange light will illuminate.