

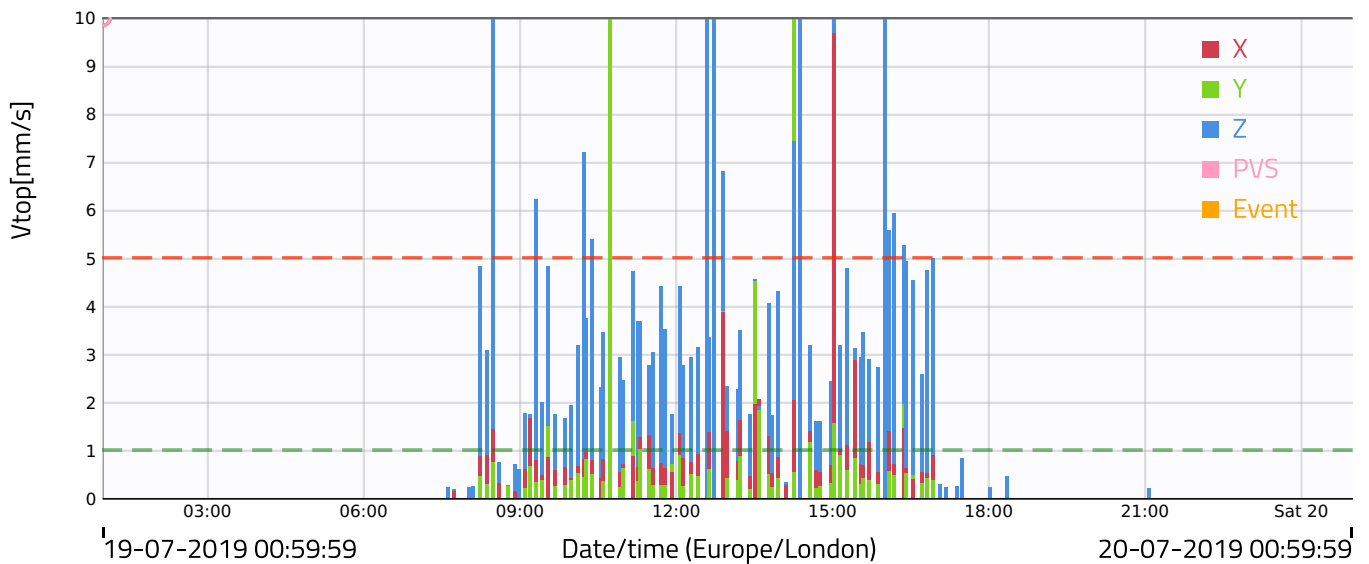
Project: Permanent System

Measuring point: 5a Lombard Road (BUBELU)

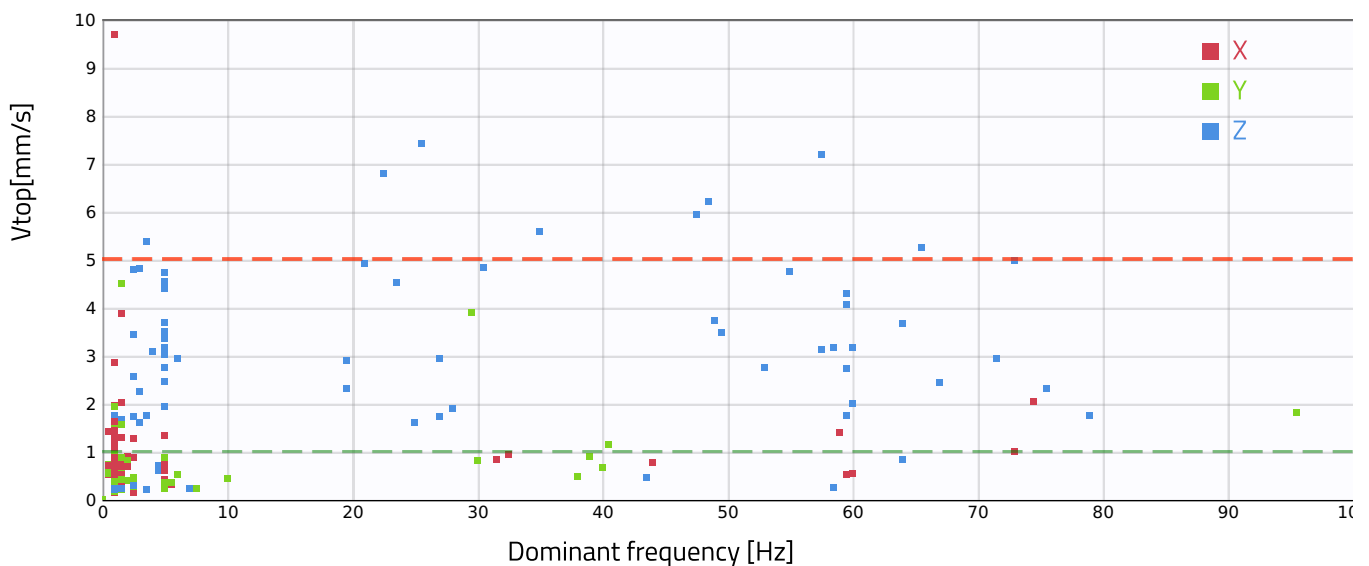
Evaluation type: Unspecified
 Flat line threshold: 10.0
 Guideline: BS7385 250Hz
 Timezone: Europe/London
 Calculate VDV (Vibration Dose Value): On
 Calculate PVS (Peak Vector Sum): Off

Alarm name	Alarm percentage	Alarm mm/s	Number of exceedances
--- Alarm level 3	10%	1.0 mm/s	12
--- Alert Type 1	50%	5.0 mm/s	12
--- Alarm level 2	50%	5.0 mm/s	12

Velocity/time



Velocity/frequency



Exceedances:

Date	X Fdom (Hz)	X Vtop (mm/s)	Y Fdom (Hz)	Y Vtop (mm/s)	Z Fdom (Hz)	Z Vtop (mm/s)
July 19, 2019 08:27:33	0.5	1.4233	0.5	0.7377	53.5	13.2573
July 19, 2019 10:43:09	1.5	33.0206	5.0	30.3521	15.0	39.4882
July 19, 2019 12:30:01	0.5	2.5867	0.5	0.8832	57.0	27.6248
July 19, 2019 12:34:17	2.0	395.9265	5.5	222.1184	1.5	26.06
July 19, 2019 12:42:51	2.5	32.6623	1.5	18.3094	6.0	1.4482
July 19, 2019 12:42:53	2.0	529.0393	1.5	78.9756	6.0	47.0296
July 19, 2019 14:14:33	2.0	76.285	13.5	23.1081	22.5	25.6641
July 19, 2019 14:21:51	2.5	192.2572	8.5	55.4055	22.0	46.0153
July 19, 2019 15:00:53	1.0	9.678	1.5	1.5601	1.5	10.5856
July 19, 2019 15:59:17	1.5	8.0954	1.5	11.8358	7.0	2.2353
July 19, 2019 15:59:27	1.5	14.6462	1.5	18.7756	20.5	11.4764
July 19, 2019 16:00:01	1.0	3.6641	1.0	0.9795	50.5	13.0512