



# It's all in the genes: inheritance and variation of traits

Write the definition and give an example for each of the different types of traits.

learned trait

Definition: \_\_\_\_\_

Example: \_\_\_\_\_

inherited traits

Definition: \_\_\_\_\_

Example: \_\_\_\_\_

environmentally  
influenced traits

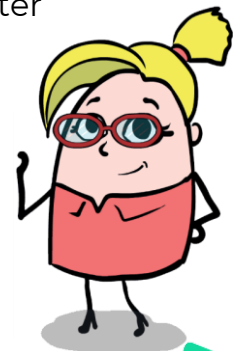
Definition: \_\_\_\_\_

Example: \_\_\_\_\_

Label each of the following examples with the trait that matches. An example has been done for you.

**L** = learned trait    **E** = environmentally influenced trait    **I** = inherited trait

- ☒ migration of animals
- ☐ brown eyes
- ☐ a flower can't grow because it doesn't have enough water
- ☐ white petals
- ☐ cubs learn where food can be found
- ☐ the language you speak
- ☐ thick orange fur



Visit us for much more at [mightyowl.com](https://mightyowl.com)