



INFILL PROPERTY DEVELOPMENT

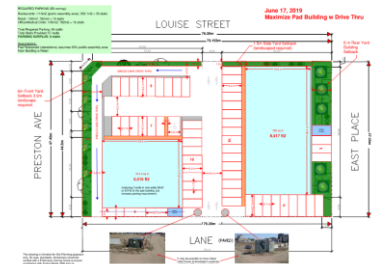
CLIENT CONTACT INFORMATION

Action Group of Companies
401B Witney Avenue North
Saskatoon, Sask.
S7L 3M6

PROJECT DESCRIPTION

Commencing in 2016, Wallace Insights has been providing senior level planning and development services to Action Group towards developing their portfolio of infill residential and commercial properties in Saskatoon. Increasing infill development is a specific goal contained within the City of Saskatoon's recently adopted Growth Plan to Half a Million. Over the next thirty years, the City of Saskatoon will be encouraging more infill development.

Wallace Insights has provided senior level planning advice and site planning scenarios to assist Action Group in their decision-making process towards developing commercial sites.



PROJECT DURATION & BUDGET

This project is on-going.

CHALLENGES AND SOLUTIONS

Many of the subject properties required rezoning or resolution of issues related to parking, conversion, development levies, consolidation, non-conformity and outdated uses. Wallace Insights has provided guidance on the highest and best use of these properties to Action Group.

SERVICES PROVIDED

Rezoning	Site Planning	Land Use Approvals
Assessment of Infill Potential		