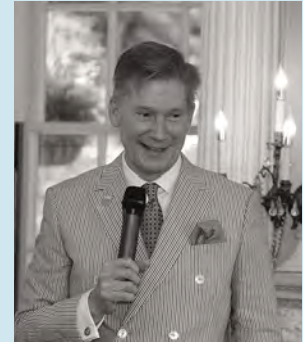




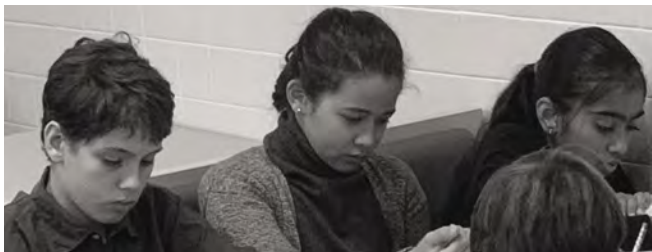
THE ENGLISH-SPEAKING UNION
OF THE UNITED STATES
ANNUAL REPORT
2022



ANNUAL REPORT 2022

TABLE OF CONTENTS

Mission	3
Chairman’s Letter	4-5
Branches	6-7
Annual Conference	8-9
Queen’s Platinum Jubilee	10
Happy Hour Series	11
Evelyn Wrench Speaker Series	12
Middle School Debate	13
Andrew Romay New Immigrant Center (ARNIC)	14
English in Action (EiA)	15
National Shakespeare Competition	16-17
National Shakespeare Writing Program	18-19
Teachers Learning Abroad (TLab)	20
Travel and Learn Abroad (TLab for Lifelong Learners)	21
Luard Morse Scholarships	22
Secondary School Exchange Scholarship (SSE)	23
Donors	24-29
Financial Report	30-31
Board & Staff	32





Expands minds
Strengthens friendships
Unlocks opportunities

Through the use of the English language

ESU MISSION

Founded in 1920, the **English-Speaking Union of the United States** is a national membership organization with more than 3,500 members organized in 65 Branches across the country. ESU members and volunteers are the pillars of our educational and cultural programs as they work in their local communities to carry the ESU mission forward.

The English-Speaking Union employs English as a shared language to foster global understanding and goodwill by providing educational and cultural programs for students, educators, English language learners, new immigrants and members.

Chairman's Letter

The 2021-2022 program year at the English-Speaking Union was filled with hope and excitement, with the sense that, no matter what obstacles we faced, there was a brighter future ahead. It was a year of recovery and adaptation, a year when ESU members, students and staff came together to overcome the hurdles set up by the lingering pandemic and not only successfully carry on but expand our programs and impact.

2021-2022 will likely be remembered as the year when HRH The Princess Royal almost came to New York. After year-long preparations the resurgent Omicron variant forced an eleventh-hour postponement of her visit. In fact, this was her second attempt to travel to New York that was foiled by the pandemic, but the setback stung because it was so last-minute. However, we did not allow the disappointment to dampen our spirits. We regrouped and re-worked our plans. We persisted and were rewarded by having the honor of finally hosting Her Royal Highness ten months later in the fall of 2022. But this is a story for another annual report.

In 2021-2022 we stayed committed to supporting our Branches and the programs that engage and inspire our members. From the block-buster online Happy Hour events to the virtual Annual General Conference, the National Shakespeare Competition and the Platinum Jubilee Celebration, the ESU's embrace of the new digital tools increased access to our programs and events and allowed us to reach more members across the country. As we gradually brought back some in-person activities, we kept our online offerings as they had already attracted a strong following.

The 39th edition of the ESU National Shakespeare Competition, our third all-digital competition in response to COVID, brought together 43 regional winners to the finals via Zoom. Since the Competition finals were broadcast nationally, parents, teachers, peers and ESU members cheered them on from across the country.

In the spring of 2022 we introduced the ESU National Shakespeare Writing Program inspired by similar writing competitions in a couple of our Branches. This year-round programming held its first contest in the spring of 2022 and engaged students who express their love of Shakespeare and the English language through writing rather than performance.

As the pandemic slowly retreated in early 2022, in-person events offered a welcome opportunity for us to come together and celebrate. We were all eager to reconnect with friends and meet new people. As part of the Queen's Platinum Jubilee, festivities at ESU Branches across the country provided a much-needed sense of excitement and positivity after a long period of social isolation. I travelled to Louisville, KY; Greenwich, CT; Boston, MA; and New York City to participate in Branch Platinum Jubilee parties and other events and saw firsthand the joy of being part of a shared community.

Our educational programs also brought back face-to-face activities. The ESU Teachers Learning Abroad (TLab) program started preparations for a busy in-person summer semester, with 39 teachers signing up to cross the pond in July.

After an auspicious relaunch of the ESU Evelyn Wrench Speaker Series featuring a virtual lecture by Charles Spencer, 9th Earl Spencer DL on November 20, 2021, the program offered an exciting in-person spring season of talks across the country. Former British ambassador to China Sir Christopher Hum, Pulitzer Prize recipient in History Dr. Edward Larson, and theater historian and consummate storyteller Jim Stebbings crisscrossed the U.S. to regale audiences in thirteen Branches with their insightful and entertaining presentations.

The 2021-2022 recipient of the ESU Luard Morse Scholarship George Pratt from Morehouse College in Atlanta, GA, spent the 2022 spring semester at the University of Manchester, and for the first time since the pandemic, the ESU Secondary School Exchange sent ten students to live and study in in the U.K. and the U.S.

The ESU Middle School Debate engaged over 1,800 students in debate activities and tournaments and offered teachers professional development workshops on how to introduce debate-centered instruction in their classrooms, an important innovation in teaching critical thinking and civil discourse.

The ESU's immigrant programs – the nearly 50-year-old English in Action and the comprehensive Andrew Romay New Immigrant Center (ARNIC) – opened up another path to the hearts and minds of our members, current and future, by engaging them in volunteerism and cultural exchange. As a pilot, we launched the English in Action Across America conversations program in several ESU Branches using a virtual format, with the potential of expanding it in-person to more locations nationally. Just as in the New York area, the volunteer members have found great reward and enjoyment in their weekly conversations with English learners from all over the world.

I am delighted, and proud, to present you with this annual report. It is as much a record of the ESU's achievements during a challenging year, as it is a tribute to the resilience and loyalty of our members and volunteers. Your generous support with time and treasure made these accomplishments possible. It is also a testament to the determination and grit of our teachers and students, new immigrants and English language learners who continued to reach for the stars. And finally, this Annual Report is an acknowledgment of the hard work and talent of the ESU staff, led by President and Executive Director Karen Karpowich. Thank you!

Enjoy reading about how the ESU advanced its mission in the challenging 2021-2022 and please renew your membership, and if you are not a member yet, join the English-Speaking Union of the United States. Come to our events, volunteer, donate to our programs and be part of a century-old fellowship that carries the ESU's mission forward.



Dr. E. Quinn Peepper

Chairman, The English-Speaking Union of the United States

The English-Speaking Union of the United States Branches

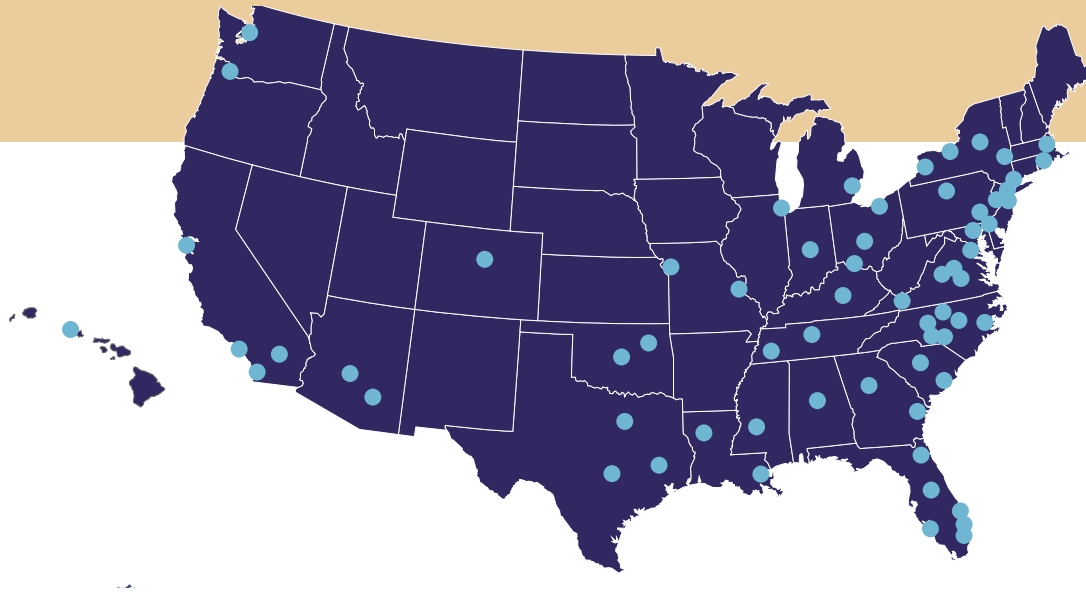
Headquartered in New York City and incorporated in the State of Delaware, **the English-Speaking Union of the United States** is an independent national membership organization with more than 3,500 members organized in 65 Branches across the country. Committed ESU members and volunteers are the pillars of our educational and cultural programs as they enthusiastically work in their local communities to carry the ESU mission forward.

The ESU Branches operate as limited liability companies (LLCs) formed in the State of Delaware, with the English-Speaking Union of the United States as the sole member. This legal structure ensures the non-profit 501(c)(3) standing of all Branches and allows for Branch management by a local Board of Directors or direct management by the National Board of Directors to deliver the ESU's charitable programs.

The English-Speaking Union of the United States shares fellowship with more than 50 independent ESUs around the world, including the English-Speaking Union of the Commonwealth in London.

Photo credits: Sarah Herron Photography (ESU Kentucky), Greenwich Sentinel (ESU Greenwich) and Robert Pushkar





Alabama

Birmingham

Arizona

Phoenix
Tucson

California

Desert (Palm Springs)
Los Angeles
San Diego
San Francisco

Colorado

Denver

Connecticut

Greenwich

Delaware

Delaware

District of Columbia

Washington, D.C.

Florida

Central Florida
Fort Lauderdale
Jacksonville
Miami-Dade-Monroe
Naples
Palm Beach

Georgia

Atlanta
Savannah

Hawaii

Hawaii

Illinois

Chicago

Indiana

Indianapolis

Kentucky

Louisville

Louisiana

New Orleans
Shreveport

Maryland

Maryland

Massachusetts

Boston

Michigan

Detroit

Mississippi

Jackson

Missouri

Kansas City
St. Louis

New Jersey

Monmouth County
Princeton

New York

Albany
New York City
Buffalo
Rochester
Syracuse

North Carolina

Charlotte
Colonial
Greensboro
Research Triangle
Salisbury
Sandhills

Ohio

Cincinnati
Cleveland
Columbus

Oklahoma

Oklahoma City
Tulsa

Oregon

Portland

Pennsylvania

Central Pennsylvania
Philadelphia

Rhode Island

Rhode Island

South Carolina

Charleston

Tennessee

Memphis
Nashville

Texas

Austin
Dallas
Houston

Virginia

Charlottesville
Lexington
Richmond
Southwest Virginia

Washington

Seattle

2021 *Annual Conference*

2021 Annual Conference

A UNION FOR ALL SEASONS

A Union for All Seasons

October 14-18, 2021

The ESU 2021 Conference, aptly themed “A Union for All Seasons,” offered workshops, lectures, panel discussions and working breakout sessions that drew lessons from the ESU’s past to point our way to the future. Among the extraordinary individuals whose legacy was honored during the conference were some of the ESU’s most notable leaders such as President Dwight D. Eisenhower, Lady Margaret Thatcher, Sir Winston Churchill and Sir Evelyn Wrench.

Hundreds of members from across the United States and abroad connected via Zoom from October 14 to 18, 2021 for the ESU’s second virtually formatted conference.

Sessions included a meeting of the National Board of Directors, workshops on the ESU programs and various aspects of Branch life, and an address by the ESU of the Commonwealth Director General Jane Easton who brought greetings from our friends in the United Kingdom.

An inspiring discussion on “Leadership: Implementing Sir Evelyn Wrench’s Vision” brought together four current and past Chairmen of the ESU of the United States and the ESU of the Commonwealth: the late Honorable Patricia Scott Schroeder, former member of the U.S. House of Representatives D-CO and Chairwoman of the English-Speaking Union of the United States from 2009 to 2013; Mr. Miles Young, Warden of New College, Oxford, Chairman of the Board of Trustees of the English-Speaking Union of the Commonwealth; Professor James Raven LittD FBA FSA, Deputy Chairman of the Board of Trustees of the English-Speaking Union of the Commonwealth and former Chairman (2019-2020); and H.E. Dr. Paul Beresford-Hill CBE, KStJ, Ambassador of the Permanent Observer Mission of the Sovereign Order of Malta to the United Nations and then Chairman of the English-Speaking Union of the United States.



Above: Dr. Paul Beresford Hill



Above: Mr. Miles Young



Left: ESU Time Capsule

Highlights of the program included lectures on the legacies of Lady Margaret Thatcher by ESU Board member and Thatcher scholar Noel Sloan and Dwight D. Eisenhower by historian Dr. Andrew J. Polsky, author of the book *Dwight D. Eisenhower: Shifting Currents*, as well as the unveiling of the ESU Time Capsule, a web-based timeline serving as a library of archival images and video footage, member recollections and interesting facts from the ESU's 100-year-old history.

Special treats were the traditional reception for ESU National Patrons with Mr. Kieran Whitworth, author of *The Churchill Quiz Book*, and the exquisite "Mo and Cho" piano concert by Dr. Quinn Peeper and Mr. Michael Harold who delighted the audience with pieces by Mozart and Chopin.



Above: Lady Margaret Thatcher launching the ESU Thatcher Lectures Series in 1999



Above: Clip from Dr. Andrew J. Polsky's lecture on Dwight D. Eisenhower

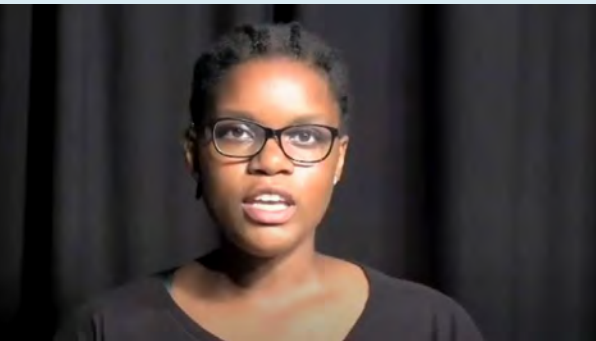


Right: Mo and Cho Concert with Dr. Quinn Peeper at the piano

2022 Queen's Platinum Jubilee



ESU Chairman Dr. Quinn Peeper and artist Mrs. Lorraine Villere talk about the inspiration for her painting *Morning Light* (in the background).



High-school student Taylor White read her poem *A love Song from the Sky* that won the first Modern Troubadour Competition, part of the new ESU National Shakespeare Writing Program.



The ESU national staff planting an Eastern Redbud as part of the Queen's Green Canopy.



ESU Chairman Dr. Quinn Peeper performs Duke Ellington's "The Queen's Suite" accompanied by Steven Ray Artists Jazz Band.

ESU Celebrates Her Majesty Queen Elizabeth's Platinum Jubilee *June 3, 2022*

The ESU's celebration of Her Majesty Queen Elizabeth's Platinum Jubilee and 96th birthday took place on June 3, 2022.

ESU members and friends gathered virtually and in-person to mark this historic milestone and celebrate the many years of service Her Majesty Queen Elizabeth II had given to the people of the United Kingdom and the entire world. Members of the ESU New Orleans Branch took part in the festivities in person by joining Chairman Dr. Quinn Peeper and Mr. Michael Harold at their country residence in Pass Christian, Mississippi.

Among the highpoints of the event was the unveiling of the painting "Morning Light" by renowned artist Lorraine Villeré, who donated it to the ESU on the occasion of Queen Elizabeth's Platinum Jubilee. Ms. Villeré, who joined the gathering in Mississippi, shared the significance of her exquisite painting of bluebells, Britain's most iconic flower. The painting is prominently displayed on the main floor in the ESU House.

High-school student Taylor White read her poem "A love Song from the Sky" that won the first Modern Troubadour Competition, part of the new ESU National Shakespeare Writing Program.

Watch Taylor White recite her poem here:

youtube.com/watch?v=IWvoiGySWDc

The ESU also participated in the Queen's Green Canopy – a unique tree planting initiative to mark Her Majesty Queen Elizabeth's Platinum Jubilee by "Planting a Tree for the Jubilee."

The event ended with Dr. Quinn Peeper's performance of Duke Ellington's "The Queen's Suite." Duke Ellington composed the album of six pieces in honor of Queen Elizabeth after meeting her in 1958. The suite is a beautiful and very intimate expression of the Duke's admiration for the young Queen. The recording was a tribute to Her Majesty Queen Elizabeth for her extraordinary reign.

Watch the performance here:

vimeo.com/714649040/efd36bf58b

Since 2020 **Happy Hour Series**

In response to the COVID-19 world, in July of 2020 ESU members got together to introduce the virtual **Happy Hour Program**, which has been met with resounding success. The Happy Hour Program brings guest speakers from locations all over the world, live and free of charge using the Zoom format.

And to make it a real happy hour, a few of the speakers suggest signature cocktails to match the theme for the attendees to create and enjoy at home during their presentations. Many speakers also offer exciting participation opportunities with fun give-away books and products at the end of each program.

All Happy Hour events are recorded and available for download to members and anyone interested to watch on-demand.

Seasons 3 and 4 of the ESU Happy Hour Series included 14 exciting installments. The wide-ranging topics of the lectures reflected the diverse interests of our membership. From literature to architecture, visual arts, antiques appraisal, history and geopolitics, these lively virtual gatherings entertained, educated and inspired.

Watch Season 3 of the ESU Happy Hour Series here:

esuus.org/esu/activities/happy-hour/previous-events/season3

Season 3 Happy Hour Series Lectures

- Most of Frederic W. Schwartz, Jr.'s Seven Ages of Membership in The English-Speaking Union, with apologies to Wm. Shakespeare with Frederic Schwartz
- "Unforgotten" for Generations to Come: Fubo Peace Memorial Park with Susan Moffat-Thomas
- Queen Victoria and the Victorian Novel with Professor Elliot Engel
- Antique Appraisals: *What is it? What's it worth? Let's do some!* with Robin Sinclair
- Rena "Rusty" Kanokogi and the History of Women's Judo with Jean Kanogi
- John Singer Sargent - The Move to London with Jan Clanton
- Ulysses at 100 - A Celebration with Bill Kennedy
- A Victorian Thriller: *Lawless and the Devil of Euston Square* with William Sutton and Roger Stacey
- Art and Power: The Royal Collection from Charles I to Elizabeth II with Professor Gerald J. Schiffhorst
- Dining Out: A Happy Hour Romp through the history of the Restaurant with Elliot Shore
- African-Americans Play The Bard with Professor Charles Dumas
- Lusitania: A Story of Loss, Deception and Conspiracy From World War 1 with James W. Stebbings
- The Eccentric Billionaire John D. MacArthur - Rubies, Rascals, and Bears, Oh My with Nancy Kriplen and Madelyn Kriplen Nasser

14

LECTURES

84

AVERAGE ATTENDEES
PER LECTURE



Rena "Rusty" Kanokogi and the History of Women's Judo with Jean Kanogi



"Unforgotten" for Generations to Come: Fubo Peace Memorial Park with Susan Moffat-Thomas



Crazio Gentileschi, Young Woman with Violin (1612)

Art and Power: The Royal Collection from Charles I to Elizabeth II with Professor Gerald J. Schiffhorst

Since 1920 **Evelyn Wrench Speaker Series**

THE EVELYN WRENCH SPEAKER SERIES IN-PERSON SPRING 2022

“Talking Tea with the Dragon: Will China Rule the World?” with Sir Christopher Hum

March 6-20, 2022

Branches visited: Denver, Kansas City, Memphis, Savannah, Atlanta, New York

“The Scopes: Trial in History and Folklore” with Professor Edward Larson

April 21-28, 2022

Branches visited: Atlanta, Austin, Tulsa, New Orleans

“The Very English Dynasty: Four Generations of the D’Oyly Carte Family” and “The Topsy-Turvy World of Gilbert and Sullivan The Magnificent Seven” with Mr. Jim Stebbings

May 8-14, 2022

Branches visited: Central Pennsylvania, Boston, Cleveland, Syracuse

The Evelyn Wrench Speaker Series, named for ESU founder Sir Evelyn Wrench, brings speakers to ESU Branches throughout the United States over the course of one to two weeks. As part of the program, many renowned historians, politicians and authors have presented their work to ESU members and the general public. Lectures cover a wide range of topics, including but not limited to: current events; history; language and literature; art and architecture; and travel.

As a kickoff event to the resumption of the Evelyn Wrench Speaker Series, the English-Speaking Union had the honor of hosting Charles Spencer, 9th Earl Spencer, DL, on November 10, 2021, when he discussed his recently published book, *The White Ship: Conquest, Anarchy and the Wrecking of Henry I’s Dream*. Described as “Game of Thrones meets The Titanic, *The White Ship* has been a U.K. non-fiction bestseller due to its riveting account of the disastrous shipwreck that claimed the life of King Henry I’s only legitimate heir, William, and the subsequent challenges of Henry I’s only legitimate daughter, Empress Matilda, as she struggled to claim the throne.

With the retreat of the pandemic in the spring of 2022 the Evelyn Wrench Speaker Series went live again with traveling lectures in Branches across the country.

In March 2022, former British Ambassador to China Sir Christopher Hum KCMG regaled audiences with his insight into US-China diplomatic relations. In April, Dr. Edward Larson, Pulitzer Prize recipient in History and professor in law and history at Pepperdine University, offered a captivating account of the Scopes Trial and America’s continuing debate over science and religion.

And in May 2022, theater historian and accomplished raconteur Mr. Jim Stebbings delighted our ESU Branches with stories on topics of their choosing, ranging from the history of the D’Oyly Carte family whose company staged Gilbert and Sullivan’s Savoy operas in the UK and Europe, to the story behind *The Magnificent Seven* to his popular lecture on the world, lives and music of Gilbert and Sullivan, which was also presented as an ESU Happy Hour Lecture.

Some Branches partnered with other local organizations and, in so doing, not only strengthened the ESU’s relationship on a local level, but also expanded the ESU’s reach and potential membership database.

Since 2011 **Middle School Debate**



In partnership with Claremont McKenna College and launched with support from the National Endowment for the Humanities, the **ESU Middle School Debate Program** teaches students in grades 5-8 fundamentals of critical thinking and language arts skills through public speaking. The ESU Middle School Debate is unique in that it maximizes the learning and skill building outcomes by extensive coach and judge training and an adaptation of the parliamentary model of debate for middle-schoolers. The program reaches students at one of the most sensitive times of their development. It enhances their academic performance in language, math and science classes and builds discipline and tolerance of different viewpoints. It appeals to both boys and girls, who competed with students nationwide via zoom for most of 2021-2022. They were thrilled to debate in-person for the Championship in April.

The ESU works closely with a dedicated team of coaches/teachers and volunteer judges to support and grow the leagues, with a focus on public schools and expanding professional development opportunities for teachers such as Debate Centered Instruction (DCI). In July 2021, the ESU helped facilitate a remote three-day, DCI Summer Institute for 36 public school teachers nationwide. DCI is gaining recognition as an important innovation in bringing critical thinking, civic-minded discourse, and media literacy into the classroom. It fosters and encourages an appreciation of the English language, by utilizing debate methods across curriculum to learn, listen and speak – from current events to literature to theater to poetry. Teachers were offered the ongoing support of a DCI mentor throughout the school year.

1,800
STUDENTS

1,450
DEBATE ROUNDS

33,500
MINUTES OF DEBATE

400
VOLUNTEERS



Since
2013

Andrew Romay New Immigrant Center (ARNIC)

393

NEW IMMIGRANTS

100%

IMPROVED ENGLISH

95%

FEEL LESS ISOLATED IN THE U.S.

91%

GOT CLOSER TO THEIR
PROFESSIONAL GOALS



The Andrew Romay New Immigrant Center (ARNIC) equips recent immigrants, refugees and asylum seekers in the New York metropolitan area with the skills, resources and support they need to integrate fully into U.S. economic and civic life. This needs-based scholarship program offers English language classes, one-to-one conversation sessions with native English speakers as well as opportunities for professional development and community integration.

This year we found new and innovative ways to meet the changing needs of the immigrant communities we serve. We were thrilled to launch the Professional Mentoring Program in the spring of 2022 with overwhelming success. The program was designed to:

- Help immigrants navigate the job market
- Expand professional networks
- Develop knowledge of U.S. business culture
- Overcome barriers to success
- Find meaningful, professional jobs

Immigrant job seekers in the ARNIC program were matched with U.S. professionals from a range of industries and fields. The curriculum included topics such as networking, marketing yourself and interviewing skills. Participants reported a 64% increase in overall confidence and there was a 32% increase in the number of participants invited to interviews by the end of the program. One of the highlights of the program was the mock interview day, which gave participants real-life interview practice.

In the spring, we reintroduced in-person classes after a two-year hiatus. The ESU national headquarters is a vibrant house of immigrants once again. Students use our center as a place to study, relax and network. Our hybrid program combines the accessibility of online activities with the benefits of in-person learning.

“ARNIC guides us by offering... very important tools to establish ourselves in our new life: inspiration, confidence, good English...”

- Student from Russia

Since
1976

English in Action (EiA)



English in Action (EiA) helps newcomers to the United States master conversational English and learn about life in the U.S. The program fosters cross-cultural exchange by pairing English language learners with volunteer tutors—native English speakers—for one-to-one conversation sessions. A hallmark of the program is its comprehensive tutor training using best practices in cross-cultural learning and leadership development. The tutor training emphasizes work with culturally-diverse populations.

English in Action continues to grow and expand into new areas. We are thrilled that some of our tutors and students have returned to in-person conversations. English in Action now offers both online and in-person volunteer opportunities, attracting new volunteers and providing more options for our students.

The new initiative, English in Action Across America, opens the program to ESU Branch members interested in volunteering. ESU members can now connect online with this meaningful and exciting program.

“It’s important to me to give them a positive feeling about Americans. And they, in turn, have so much to teach me.”

- Volunteer, English in Action

38,000

VOLUNTEER AND STUDENT
HOURS PER YEAR

95%

OF STUDENTS FEEL CONFIDENT
USING ENGLISH IN EVERYDAY LIFE

90%

OF STUDENTS IMPROVED
KNOWLEDGE OF U.S. CIVIC LIFE

90%

OF VOLUNTEERS FEEL ENGAGED
AND HAVE A SENSE OF
ACCOMPLISHMENT

94%

OF VOLUNTEERS LEARN MORE
ABOUT OTHER CULTURES



Since
1983

National Shakespeare Competition



415,000+
STUDENTS SINCE INCEPTION

16,000
STUDENTS IN 2022

2,000
TEACHERS IN 2022

850
COMPETITIONS IN 2022

43
COMMUNITIES & BRANCHES

The ESU National Shakespeare Competition is a performance-based education program supported by ESU Branches across the country. High school students nationwide read, analyze and perform Shakespeare monologues and sonnets in three qualifying stages: school, ESU Branch and national. In the process, they develop analytical and communication skills, build confidence and learn to appreciate the power of the spoken word. Since 1983, more than 400,000 students have brought the timeless works of Shakespeare to life.

The ESU National Shakespeare Competition in 2022

The Competition has endured for nearly 40 years because of its transformative effects on the young participants and the profound feeling of satisfaction and delight it instills in all who support it.

The 2021-2022 program year was no exception. Forty-three Branches sent their best contestants to the virtual semi-finals, using recorded performances uploaded to YouTube. A panel of distinguished judges, located remotely, reviewed the submissions and selected ten finalists. The finalists went on to perform live via a Zoom meeting and their performances were watched by friends, family and ESU members across the world.

Sasha Fedderly of the ESU New York City Branch won first place with her thoughtful renditions of Lady MacBeth from *MacBeth* and Sonnet 35. Sasha won a scholarship to the British American Drama Academy Midsummer Conservatory Program in London. Her teacher, Margaret George at Lycée Français de New York High School, received the \$1,000 Teacher Recognition Award.

Roxanna Beebe Center of the ESU Charlottesville Branch took second place with her captivating interpretations of Hecate from *MacBeth* and Sonnet 94. As her prize, Roxanna attended the American Shakespeare Center Theatre Camp in Staunton, Virginia (ASC Theatre Camp | American Shakespeare Center). Her teacher, David Becker at Charlottesville High School received the \$500 Teacher Recognition Award.

Kathuure Miriti of the ESU Kentucky Branch won third place for her rendition of Cressida from *Troilus and Cressida* and Sonnet 34 taking home a cash prize of \$1,000. Her teacher, Amie Kisling at SCAPA Lafayette High School, received the \$250 Teacher Recognition Award.



We are proud to continue the People’s Choice Award as part of the 2022 National Shakespeare Competition. Instituted three years ago to foster a sense of community during the Covid-safe virtual competition format, the People’s Choice Award has been a popular outlet for students to support each other. Due to the success of the People’s Choice Award, in 2022 we expanded it to include not only a first-place winner, but also a second and third place winner.

The recipient of the \$1,000 first place prize, Molly Livesay of the Austin Branch, student of Helen Potter at Great Hearts Monte Vista North High School, received 635 votes. In second place, with 534 votes, Jake Reed of the Memphis Branch took home a \$500 prize. Jake is a student of Cynthia Weiland at Arlington High School. In third place, with 452 votes, Riley Prior of the Monmouth New Jersey Branch took home a \$250 prize. Riley is a student of Smita Gantra at Glen Ridge High School. Nearly 7,000 people voted from countries around the world, including Germany, Australia, the Philippines, India, China, and Indonesia, expanding the competition’s community despite the pandemic.

Joining the winners in the final round of competition were Kendall Becerra of the San Diego Branch, Anka Chiorini of the Syracuse Branch, Lottie Doughty of the Washington, DC Branch, Raina Grabowski of the Central Florida Branch, Emma Kresge of the virtual E-Branch, Mahogany Prichard of the Palm Beach Branch, Lucy Shea of the Philadelphia Branch, Declan Smith of the Greenwich Branch, and Jordyn Spencer of the Atlanta Branch.

The 2022 Competition judges included renowned members of the theater community: Dr. Ralph Alan Cohen, Founder and Senior Advisor of the American Shakespeare Center; Dana Ivey, a five time Tony nominee and star of the Broadway stage and screen; Dr. Catherine Loomis, author and Shakespeare scholar; Eunice Roberts, acclaimed performer, playwright and Dean of BADA; and Katey Parker, New York City high school teacher, 2020 New York City ESU TLab Scholar and 2001 National Shakespeare Competition First Place Winner.

The competition has been recognized by the Globe Center, the Children’s Theatre Foundation of America and the American Academy of Achievement.



Sasha Fedderly, ESU New York Branch,
First Place Winner



Roxanna Beebe, ESU Charlottesville Branch,
Second Place Winner



Kathuure Miriti, ESU Kentucky Branch,
Third Place Winner



Since
2022

National Shakespeare Writing Program



Weary with Toil, I Haste Me To My Bed
by J Santiago, Greenwich Branch

Timeless Obsession by Anthony
Ojeda, Miami Branch

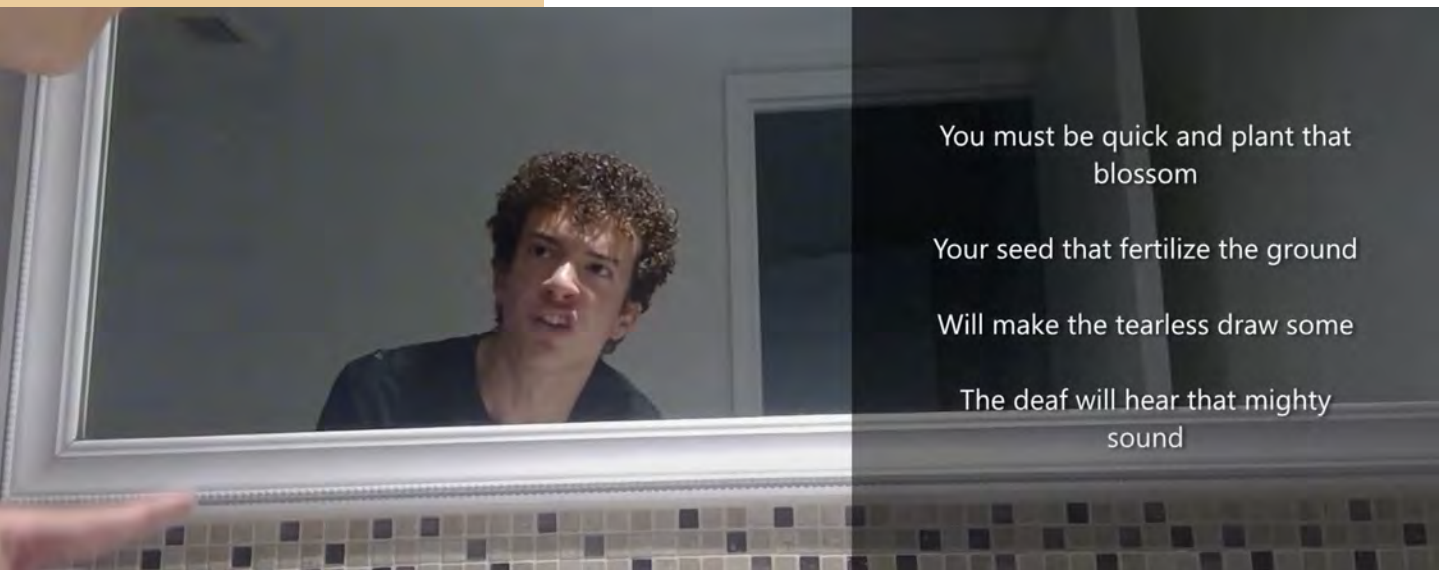
With the support of the Achelis & Bodman Foundation, in 2022 the ESU launched the long-planned writing program centered on **the ESU National Shakespeare Competition**.

This new addition to our Shakespeare programming seeks to engage students who express themselves via the written word, rather than through performance. In conjunction with the ESU National Shakespeare Competition, the Writing Program reaches more students, expands their venues for expression and increases their opportunity to celebrate our shared love of the English language and the works of Shakespeare.

The Writing Program has three goals:

- To create competitions of academic value to students
- To provide pedagogically sound resources for our community of teachers
- To enrich the ESU Shakespeare community, especially our Branches and members

The first competition in the spring of 2022, titled ESU Modern Troubadour, invited students to deconstruct one of Shakespeare's sonnets and make it accessible to contemporary audiences. Students were encouraged to modernize the language, create song lyrics or a rap, or a spoken word poem. This multi-modal program provided opportunities for students unfamiliar with Shakespeare's sonnets to participate and allowed teachers to introduce Shakespeare to uninitiated students such as those in special education and English as a new language classes. The competition focused on creativity and was open to both middle and high school students. Submissions were accepted in multiple formats, ex. Written sonnet, MP3, MP4, YouTube video, digital art (or scan of physical art piece submitted digitally).



You must be quick and plant that
blossom

Your seed that fertilize the ground

Will make the tearless draw some

The deaf will hear that mighty
sound

2022 High School Winners:

Written: Taylor White, New York Branch, student of Leslie Kohn at Scholars' Academy. Free-form poem entitled *A Love Song from the Sky* is based on Sonnets 3, 18, 105, 116.

Video: Anthony Ojeda, Miami Branch, student of Michelle Perkins at Miami Arts Charter School. Short-form movie entitled *Timeless Obsession* is based on Sonnet 16.

Audio: Ebunoluwa Oguntola, Syracuse Branch, student of Courtney Romeiser at Jamesville-DeWitt High School. Song entitled *Beseeking Solace* is based on Sonnet 138.

Graphic: Sophia Hall, Washington DC Branch, student of Lena Roy at Holton Arms. Mixed-media collage entitled *Mirror Reflections* is based on sonnet 138.

2022 Middle School/Junior High Winners:

Written: Eric Wu, Seattle Branch, Student of Kathryn Maslak at PrepEDU. Poem entitled *To Will* is based on Sonnet 2.

Video: No Submissions

Audio: Dror Ohad, Greenwich Branch, student of Carol Blejwas at William H. Hall School. Poem entitled *Weary with Toil* is based on Sonnet 27.

Graphic: J Santiago, Greenwich Branch, student of Carol Blejwas at William H. Hall School. Digital collage entitled *Weary with Toil, I Haste Me To My Bed* is based on Sonnet 27.

➔ See all the winning submissions at bit.ly/42qHEMA



Mirror Reflections by Sophia Hall,
Washington DC Branch

“*If only you were able to realize,
Beauty does not need to be
repeated,
As everything will eventually
come to their demise,
When I do become tattered and
depleted,
At least I will live my last few
years without regret,
I will think back to the times when
I was still young,
My former beauty will fade out as
if in a vignette,
My beauty will be long far-flung,
If I were to be asked where my
beauty has gone,
I could simply answer “My days
of youth have concluded, Just
like how the most beautiful fabric
made from nylon, Will eventually
be whittled down and secluded”
I have lived a great life,
having cold blood will be my
pride, What happens next will
be fate’s turn to decide.*

To Will by Eric Wu,
Seattle Branch

Since 1957 **Teachers Learning Abroad (TLab)**

Each summer through the generosity and dedication of ESU Branches, **TLab Scholarships** are awarded to local middle and high school teachers for a two to six week summer study in the United Kingdom. Teachers study English literature and history, creative writing and international politics at Oxford and Edinburgh or are up on their feet learning how to “Teach Shakespeare Through Performance” at Shakespeare’s Globe in London. Teachers return inspired and eager to share their knowledge with their students, colleagues and ESU Branches.

Due to UK Covid quarantine requirements of up to ten days in July 2021, only Edinburgh welcomed in-person study. Oxford and The Globe postponed their summer programs until 2022 when a total of 39 teachers signed up to cross the pond in July.



“During the four-week program, we workshoped writing pieces, watched/listened to author readings, engaged in master classes, and traveled throughout Edinburgh. It is a magical city filled with charm, history, and the friendliest people I have ever met! Thank you, Thank you, Thank you for choosing me as your ESU Tlab Scholar!”

- Estephany Reyes, ESU Princeton Branch

Teachers Learning Abroad courses:

University of Edinburgh



Text and Context:
Modernism, Scottish Literature,
and Contemporary Literature

Creative Writing

Theatre and Performance

Shakespeare’s Globe



Teaching Shakespeare
Through Performance

University of Oxford



English Literature

History, Politics, and Society

Creative Writing

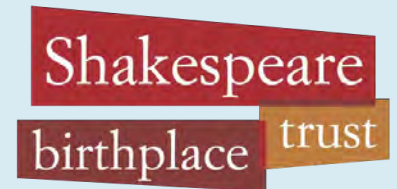
International Politics

Find 2023 Programs at: www.esuus.org



Since
2017

Travel and Learn Abroad (TLab for Lifelong Learners)



Travel and Learn Abroad for
Lifelong Learners courses:

**Shakespeare Birthplace Trust/
Stratford-upon-Avon**

From Page to Stage: Text to Theatre

The **TLab for Lifelong Learners Program** opens up to ESU Branch members the international, educational and cultural opportunities previously only available to our middle and high school teachers. The ESU offers one-week programs in the United Kingdom that provide lectures by renowned scholars, behind-the-scenes tours, access to archives not open to the public and the company of intellectually curious, worldly and adventurous fellow travelers. Past trips have included Dickens' London and Shakespeare's Stratford-upon-Avon.

Due to Covid, the programs were cancelled in 2022. The ESU continues to work closely with Shakespeare Birthplace Trust and is looking forward to offering additional one-week programs in the future such as at The Oxford Experience at University of Oxford, Christ Church.



Since
1969

Luard Morse Scholarships

The **ESU Luard Morse Scholarship** is a merit-based grant that provides up to \$25,000 towards a semester of study at a British University. The scholarship is available to American students attending Historically Black Colleges and Universities in the United States pursuing any discipline and has been awarded to students majoring in economics, philosophy, finance, mathematics, liberal arts and the sciences. Since the inaugural 1969-1970 academic year, 87 exceptional students have been awarded scholarships to study at 18 universities including Oxford, Cambridge and the London School of Economics.

The 2021-2022 ESU Luard Morse Scholar George Pratt, a History and Religion Major at Morehouse College in Atlanta, Georgia, studied at the University of Manchester Spring Semester 2022. An avid debater, George was invited by the ESU of the Commonwealth to serve on a distinguished panel of judges for the Grand Final of the ESU-Churchill Public Speaking Competition at Churchill College, Cambridge in May.



George Pratt and Jane Easton, Director-General ESU of the Commonwealth at Cambridge University



Geord Pratt, 2021-2022 Luard Morse Scholar

Since
1928

Secondary School Exchange Scholarship (SSE)



SSE US Scholar Jacob Perry, Goalkeeper
Langley Football team UK

The ESU Secondary School Exchange Scholarship is a merit-based scholarship that provides tuition, room and board for US and UK students to spend a semester or year (gap year) abroad between high school and college. Since its inception in 1928, the ESU of the United States and ESU of the Commonwealth have worked closely together to provide the scholarship opportunity for thousands of students to expand their horizons academically and culturally by studying at secondary schools in the US and UK. The second-oldest of our educational programs after the Evelyn Wrench Speaker Series, the SSE is at the heart of the ESU mission to use the English language to foster global understanding and goodwill through cultural and educational exchanges. Through this experience, students gain maturity, independence and global perspectives that benefit them in college and in their future careers.

For the first time since the pandemic, ten students crossed the pond to live and study during the 2021-2022 academic year in the United States and United Kingdom. In London, Dartmouth House again opened its doors to host an in-person Thanksgiving dinner for SSE students and in New York City, ESU National Headquarters welcomed visiting SSE students and alumni to tea. SSE UK and US alumni enjoyed connecting and sharing their experiences via Zoom during the SSE Autumn Alumni Town Hall.

SSE Scholars & Alumni at Dartmouth House



With Thanks to Our Donors

JULY 1, 2021 – JUNE 30, 2022

* Individuals who generously participated in the English-Speaking Union National Patron Program providing unrestricted operating support to the ESU and its Branches.

‡ Deceased

Leadership Circle **\$100,000 or more**

Marietta & Andrew Romay
Foundation

Visionaries' Society **\$20,000 - \$99,999**

Mr. Donald A. Best*

Dr. Loveday Conquest and
Mr. Fred Kleinschmidt*

The Starr Foundation

Dr. E. Quinn Peeper and
Mr. Michael D. Harold*

Dr. Julia Churchill Van de Water*

Walter Hines Page Society **\$10,000 - \$19,999**

ESU Atlanta Branch

Susan Ferris*

Ms. Karen Karpowich and
Mr. Ian Calderon*

Mr. Darryl R. McCormick*

Dr. Laurence C. Morse and
Ms. Pamela McKoin*

Mrs. Sarah Morgan Cuming Morse

Mrs. Elizabeth Deforest Scott* and
Mr. Stanley Deforest Scott*+

Dr. Susan Robin Sinclair*

National Fellows **\$5,000 - \$9,999**

Axe-Houghton Foundation

Dunning, Bartholow & Miller LLP

Henry E. Niles Foundation

The Jesse & Dorothy Hartman
Foundation

Mr. and Mrs. Frederick London*

Mrs. David Jamison McDaniel*

ESU Richmond Branch

Mr. Jeffrey L. Schnabel *

World Education Services Inc.
(WES)

Chairman's Circle **\$2,500 - \$4,999**

Dr. Cheryl Albuquerque*

Mr. and Mrs. Edward W. Callahan*

Mr. and Mrs. Stewart B. Clifford*

The Joseph S. and Louise
B. Rumbaugh Fund of the
Community Foundation of
Broward County

Dr. and Mrs. David A. Dooley*

Mr. Duane L. Hughes

Mrs. Barbara W. Hughes*

Mr. Duncan Karcher*

Mr. Keith W. Lerch* - In honor of
Annabelle and Walter Lerch

Marken Family Trust

Mr. David Martinelli*

Mr. and Mrs. Laurence Mester

Ms. Bettie M. Miller*

Mr. and Mrs. Jeffrey Peterson*

PNC Foundation

Mrs. Natalie T. Pray/Malcolm S.
Pray, Jr. Foundation*

Dr. and Mrs. George W. Ray III*

The Richard D. Donchian
Foundation

Mr. and Mrs. Greg Rohan*

Mr. Noel Sloan*

Mr. Jeffrey Tennant and
Mr. Bruce L. Smith*

Dr. and Mrs. Ralph Wyndrum*

Vice Chairman's Circle **\$1,500 - \$2,499**

Ms. Jacqueline Abrams*

Ms. Mary Anne Barker

Mr. Timothy L. Fields and
Mr. Chris Bergeaux*

Mr. and Mrs. F. David Grissett*

Mr. William B. Maschmeier*

Ms. Natalie Nimerala
ESU Princeton Branch
Mr. W. Barton Roe*
Mr. Daniel Rose
Dr. and Mrs. James Stark*
Mr. and Mrs. Bruce E. Thompson

President's Circle
\$1,000 - \$1,499

Mr. Randall C. Abrams
Mr. Geoffrey Bradfield
Mrs. Christine M. Brown*
ESU Central Florida Branch
Mr. Charles E. Clapp III*
Mr. and Mrs. Philip G. Cox*
Ms. Cynthia Fields and
Mr. Lawrence Fields
Mr. William C. Fuller, Jr.
Edward and Julia Hansen
Foundation
Mr. Brice Hoken
Dr. Jerry Huff*
Ms. Dana Ivey*
Mr. Simon Jones
Mrs. Joan Kahn
Robin Kemper, Esq.*

Mr. and Mrs. David Kepner*
Mr. and Mrs. Rodney Koenig*
Mr. and Mrs. H. Pettus LeCompte*
Mrs. Kathryn Lerch*
Mr. Benjamin Mester
Mr. Sean E. Mickens
Mrs. Donna M. Miller*
Mr. Stephen Murray, Jr.*
Mrs. Gloria Norris*
Prof. Clarke F. O'Reilly, Jr.
and Ms. Ana Diaconu*
Mr. John J. Raffaelli Jr.*
Prof. Brian Abel Ragen, Ph.D.*
Mrs. Marie Lucia Renard
Ms. Sally Richards*
Dr. Jill Toliver Richardson*
Mr. Robert W. Robinson
Mr. and Mrs. Joseph Roxe*
Mr. and Mrs. Richard Smarg*
Mr. and Mrs. Christopher
St. Victor de Pihno*
Mr. and Mrs. Norman Volk
Mrs. Lucille C. Whitley*
Mrs. Catherine Windels
Mr. John Yarmick

National Sustainer
\$750 - \$999

Miss Barbara M. Deacon*
ESU Denver Branch
Mr. and Mrs. Bruce A. Gordon*
Ms. Karlee Hilliard*
Dr. and Mrs. Dentcho Ivanov*
Ms. Patricia Ann Moore*
Mrs. Ingrid Philbrick*

National Sponsor
\$500 - \$749

Mr. and Mrs. Henry Bell III*
Mr. Rami Blair
Ms. Sandra Boyd and
Mr. Fred Tucker*
Mr. Guy A. Bramble
Mr. and Mrs. Randy Brannen*
Dr. James B. Broadhurst*
Mrs. Cees Bruynes - In honor
of Mrs. Natalie Pray
Mr. and Mrs. Dean Bunce*
Dr. John M. Carland
Mr. Matthew E. Cheek*
Mr. and Mrs. Anthony H. Cowan,
FRAES*

Ms. Anne D. Crane*
Mrs. Jean H. Davison*
Mr. and Mrs. Robert V. Demarco*
Mr. and Mrs. Jean Paul Elard*
Mr. Tony Elms and
Ms. Joyce Reehling*
Ms. Elizabeth R. Etoll*
Dr. Robert M. Franklin
ESU Greenwich Branch
Mr. Robert H. Gunn, Jr.*
Mr. and Mrs. Morris Hackney*
Ms. Nicole A. Halbreiner*
Mr. and Mrs. Paul D. Harrington*
Dr. Mark R. Harrison
Mr. Andrew Heath
Dr. Michael D. Hill
Mr. and Mrs. George O. Hillard, III*
Mr. and Mrs. Jack D. Horner*
Mr. and Mrs. Robert J. Husson*
ESU Kentucky Branch
Ms. Annette S. Kirby*
Mrs. Gordon B. LeGrand*
Mr. Jeffrey C. Levy and
Ms. Liz Lapidus*
Mr. Jonathan S. Linker
Mr. and Mrs. Thad Long*
Mrs. Elizabeth M. Loomis - In
memory of Mrs. Richard Loomis
Dr. Thomas A. Mason and Ms.
Christine H. Guyonneau*

Mr. and Mrs. Jacques Moore
Mr. and Mrs. Bennet Muse*
Mr. Gary S. Oaks*
Mr. Lawrence Raymond
Mr. and Mrs. Charles D. Reaves*
Mr. and Mrs. Ralph Roberson*
Mr. and Mrs. Charles M. Royce*
Mr. John Michael Thornton and
Ms. Donna Altieri*
Mrs. Frederick W. Toohey*
Mr. Charles Urstadt and
Mr. David Bernard*
Mr. and Mrs. Dan Van Horn
Dr. Suzy M. Wakefield and
Mr. Jay S. Wakefield*
Mr. and Mrs. Andrew Webster*
Mr. and Mrs. James Wesner*
Ms. Lynne Wheat*
Prof. Elaine Orr Wise*
Mr. Richard C. Wolfe*
National Donor
\$300 - \$499
Mr. Robert Amott and
Ms. Janice Flanagan*
Ms. Geraldine Backer*
Mr. and Mrs. Christopher Baring*
Ms. Sylvia Barnard*
Mr. Warren Bender*
Ms. Janifer Bennett*
Dr. Karen Blair-Brand*

Mr. and Mrs. and
Mrs. John G.B. Boyd*
Ms. Virginia Brody*
Mrs. Bruce Burton*
Ms. Elizabeth Anne Buzzell,
FRSA,ASA (Ret.)*
Mr. and Mrs. Carlyle Campbell*
Mr. Basil Carpenter and
Mr. Bruce Haefner*
Mr. and Mrs. Leonard Caruso*
Mr. Delbert Chumley, Jr.*
Mrs. Elizabeth Clarke*
Dr. Rennie W. Culver and
Ms. Beth Goddard*
Mr. and Mrs. Robert DeFer*
Mr. and Mrs. Michael Dendy*
Ms. Alta Devivo*
Dr. and Mrs. Charles Dupin*
Dr. and Mrs. James P. Fadely*
Mr. Peter D. Farnham and
Ms. Barbara Walker*
Mrs. Sallie Van Pelt Feild*
Mr. and Mrs. Tench Forbes*
Mr. and Mrs. Douglas K. Freeman*
Mr. Alan D. R. Frese*
Ms. Susan J. Gerrity and
Mr. Edward Taffel*
Dr. and Mrs. John L. Gordon, Jr.*
Mrs. Barbara N. Grant*
Mr. Paul Henry and
Mr. Juan Castaneida-Merced*

Mrs. Patrice Hickox - In memory
of Mrs. Catherine Dinehart
Mr. and Mrs. Paul F. Hoch*
Mr. Dennis Hummel*
Rev. and Mrs. Ernest E. Hunt*
Mr. Mark Hutchinson*
Ms. Alice J. Irby*
Mr. and Mrs. Drew Jardine*
Mr. and Mrs. Stephen B. Jeffries*
Mr. Allan D. Jergesen*
Mr. and Mrs. William
Henry Jernigan*
Dr. and Mrs. William C. Johns*
Mr. William J.D. Jordan*
Ms. Marjorie T. Julian*
Mr. H. James Keats, Jr.*
Mr. and Mrs. Peter S. Kelley*
Mr. and Mrs. William F. Kemp*
Mrs. Taryn Kennedy and Ms.
Gabriela Aragon*
Hon. James W. Kerr, Jr.*
Mrs. Lou C. Kerr*
Ms. Judith King*
Ms. Mary Kuppe*
Mrs. John Peter Labouisse*
Mr. and Mrs. Eugene W. Lausch*
Mr. and Mrs. Robert E. Leak*
Ms. Sheila W. Leith*
Mr. and Mrs. Edwin
Deane Leonard

Ms. Yvonne R. Leveque*
Dr. William M. Long*
Mr. and Mrs. Kevin G. Mackey*
Mr. and Mrs. Charles H. Maddrey*
Prof. and Mrs. James Marrow*
Mr. and Mrs. Edward W. Martin*
Ms. Bonnie B. Matheson*
Mr. and Mrs. Robert
M. McGowen, Sr.*
Ms. Jane McGuffin*
Mr. and Mrs. Joseph H. McLure*
Mr. and Mrs. Martin F. McNamara*
Dr. Christopher Medalis and
Mr. Boyan Konstantinov*
Ms. Wendy Meyer*
Mr. and Mrs. J.R. Moock, Jr.*
Mr. and Mrs. Luther Moore*
Mrs. Jean Morris*
Mr. and Mrs. Clive Muncaster*
Ms. Susan Merritt Nelsen*
Mr. and Mrs. Rick C. Normand*
Mrs. Meredith Oates*
Mr. and Mrs. Arthur Oliver*
Ms. Mary Elizabeth O'Neill and
Mr. William W. Harkins*
Ms. A. B. Orthwein*
Mr. Peter Parsonson and
Dr. Sarah Parsonson*
Ms. Julia Patterson*
Mr. Davidson A. Perry-Miller*

Mr. and Mrs. Ernest Petrey, Jr.*
Mrs. Mary Alice Phelan*
Mr. Gordon Lee Pollock*
Mrs. Jean Bruce Poole*
Mr. Alexander Pope III and
Dr. Karen Pope*
Mr. and Mrs. J. David Pugh*
Mr. Jonathan D. Rabinowitz*
Ms. Julia S. Rankin*
Dr. and Mrs. Donald J. Rosato*
Mr. and Mrs. James Ryan III*
Mr. and Mrs. John R. Sapp*
Mr. and Mrs. Claude Schlesinger*
Mr. and Mrs. Henry Schulhoff*
Mr. and Mrs. Frederic W.
Schwartz, Jr.*
Mr. and Mrs. Stephen
G. Schweller*
Dr. and Mrs. Robert Sevier*
Ms. Nora H. Shepard*
Mr. and Mrs. George Smuga*
Mr. and Mrs. Harry C. Stahel*
Mrs. Valerie Stauffer*
Mr. and Mrs. R. Curtis Steele*
Ms. Judith Clouse Steelman*
Mr. and Mrs. Sainsbury L. Strack*
Dr. Austin Summer
Dr. Jane Sumner*
Ms. Denise Taylor*
Mr. Gifford Thomas*

Cedric W. Vogel, Esq.*

Mr. and Mrs. Joseph Voss*

Ms. JoAnn Wallace*

Ms. Katherine K. Walls*

Mr. and Mrs. John L. Warden*

J. W. Thompson Webb, Esq.*

Ms. Linda G. Webb*

Dr. Peter D. Weigl

Ms. Barbara W. Weller*

Mr. and Mrs. Charles M. Whedbee*

Dr. and Mrs. Henry P. Williams III*

Dr. and Mrs. James P. Wilson*

Ms. Ann Marie Winters*

Prof. Walter F. Wolf, III*

Mr. and Mrs. Philip Woollam*

Supporter

\$100 - \$299

Abbot and Dorothy H.
Stevens Foundation

Dr. Mary E. Alexander

ESU Austin Branch

Mr. Paul J. Barringer

Mr. and Mrs. David P. Bennett III

Mrs. Sylvia Bruton

Mr. Justin Bynum

Mr. David L. Calfee

Mr. and Mrs. Gary T. Capen

Mr. Guy B. Dixon

Mr. James M. Donohue

Mr. and Mrs. Adam M. Drimer

Mr. Gregg Edwards

Mr. Peter B. Elliott

Hon. Douglas Ginsberg and
Ms. Dorothy S. Gray

Mr. W. Langley Granbery, Jr.

Cathy Denise Hampton, Esq.

Dr. Leigh Hansen and
Mr. Ken Hansen

Mr. and Mrs. Wyatt R. Haskell

Ralph H. Henderson

Mr. Darrell W. Hill

Ms. Debbie Hill

Mr. and Mrs. Lawrence
Hollingsworth

Mr. Michael Jeffcoat

Mr. William Kennedy and
Ms. Allyn Rosser

Mr. Toby Khan

Ms. Daria Pace Lamb

Mr. Mark Lawhorn and
Ms. Lynn Haff

Mr. Dane Greenwood Lemeris

Mr. and Mrs. Lanneau D. Lide, Jr.

Mr. Vitaly Margolin

Mr. and Mrs. Matthew McChesney

Ms. Janice D. McClure

Mr. Alfredo Medina

Mr. Hamilton Meserve

Ms. Concetta Miller

ESU Naples Branch

ESU New Orleans Branch

Mr. and Mrs. Joseph Nitzken

Ms. Margaret O'Brien

Mr. Robert Redfield

Mr. Christopher W. Rogers

Mr. James F. Rogers

Mr. and Mrs. Donald Ross

Mr. Taylor Sharpe

Mr. and Mrs. David Shaw OBE

Mr. Adam D. Shephard

Mr. Bejan Shirvani

Mr. and Mrs. Steven J. Simons

Dr. Robert A. Stauffer

Mr. and Mrs. Donald B. Sweeney

Mr. Addison B. Thompson

Mr. Stephen Trachtenberg

Dr. Louise Valine PhD

Ms. Mary-Patricia Warneke

Ms. Sarah Elliston Weiner

Mr. Seth W. Whitaker

Ms. Anne J. Willis and
Mr. David Teich

Dr. Asa G. Yancey

Friend

Less than \$100

Mr. John W. Ager III

Ms. Susan Alter

Mr. and Mrs. Rob Andrejko

Mr. Robert Bauchner

Mrs. Tucker Blaine
Dr. Svetlana Bochman
Mr. Paul T. Boghosian
Mr. David B. Brawer
Mr. and Mrs. Daniel Bukovac
Mr. Tracy Campbell
Mr. and Mrs. Geoffrey Close -
In honor of Dr. Henry (Phil)
Williams III
Mr. and Mrs. Ralph A. Cohen
Ms. Jane Comer
Ms. Kathryn Cox
Mr. John C. Diamante
Mrs. Diane S. Dupin
Mr. John W. Ewell
Ms. Phyllis Feinberg
Mr. Michael George Freer
Ms. Jacqueline Gamble
Mrs. Ashley Ganz
Ms. Susan Hollis Garrett
Mrs. Pamela Grabczynski-Voss
Mr. Conrad E. Grundlehner and
Dr. Marietta Grundlehner
Ms. Victoria Hairston
Ms. Christine L. Hilger -
In memory of Mrs.
Catherine Dinehart
Mr. David Hopkins
Mr. Thomas H. Huss
Ms. Marjorie L. Kennedy
Mr. Jennifer Larsen
Ms. Linda S. MacIntosh
Mr. Akm Mahfuzullah
Mr. Alan D. Maislen
Mr. and Mrs. Thomas B. McGowan
Mrs. Beata M. Newman Scarpulla
Dr. and Mrs. Donald M. Pattillo
Mrs. Rebecca Reynolds and
Mr. Peter Reynolds
Dr. Ilan Riss and Ms. Belina Riss
Dr. Marilyn Moffat Salant
Ms. Martha Salper
Mr. William R. Sanders
Ms. Patricia L. Sayles
Ms. Cynthia Schroeder
Ms. Elizabeth A. Schultz
Ms. Bonnie Singer
Dr. Zinaida Taran
Mr. Eugene Tariq Thomas
Ms. Michelle Wagner
Ms. Casey Waltz
Mr. Jonathan Weinberger
Mr. Charles Eduardo Whitehead
Ms. Sarah L. Williams
Ms. Linda Zarnett

2022 Consolidated Financial Report

Revenues	
Contributions	\$673,903
Investment Income Allocated to Operations	\$811,785
Membership	\$260,432
Earned Revenue	\$121,286
Speakers and Conferences	\$355,884
Special Events (net of event expenses)	\$20,953
Grant Revenue	\$186,085
Other Revenue	\$165,214
Total Revenue	\$2,595,542

Expenses	
Program Services	
Immigrant and Education Programs	\$1,562,543
Membership and Branch Services	\$424,668
Branch Events, Meetings, and Communications	\$464,230
Speakers & Conferences	\$28,418
Total Program Expenses	\$2,479,859
Supporting Services	
Management and General	\$769,755
Fundraising	\$84,236
Total Service Expenses	\$853,991
Total Expenses	\$3,333,850

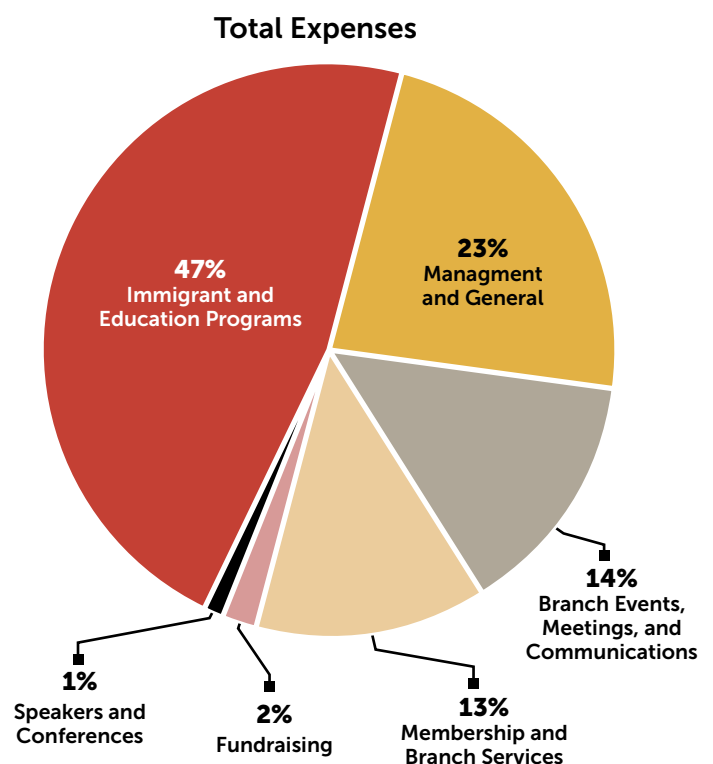
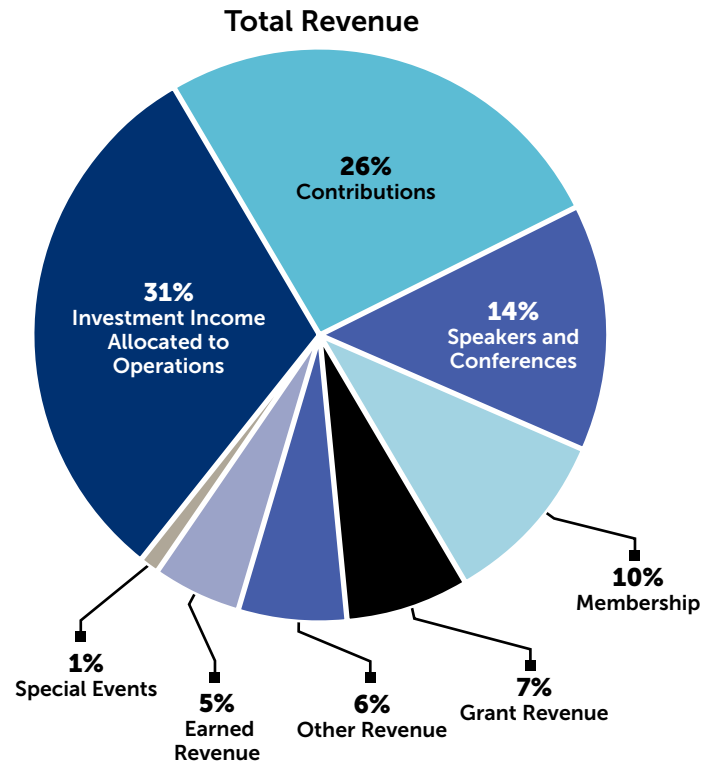
Non-operating Items	
Investment Return - National	\$3,860,081
Investment Return - Branches	\$1,594,096
Other	\$2,070
Total Non-operating Items	\$5,456,247

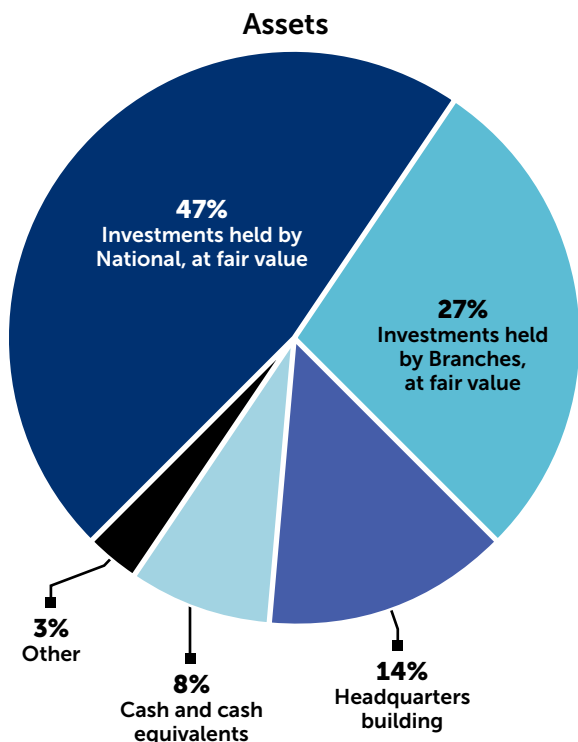
Net Assets	
Beginning of year as of 7/1/21	\$30,344,430
End of year as of 6/30/22	\$24,149,875
Change in Net Assets	\$6,194,555

Condensed Statement of Activities

July 1, 2021 - June 30, 2022

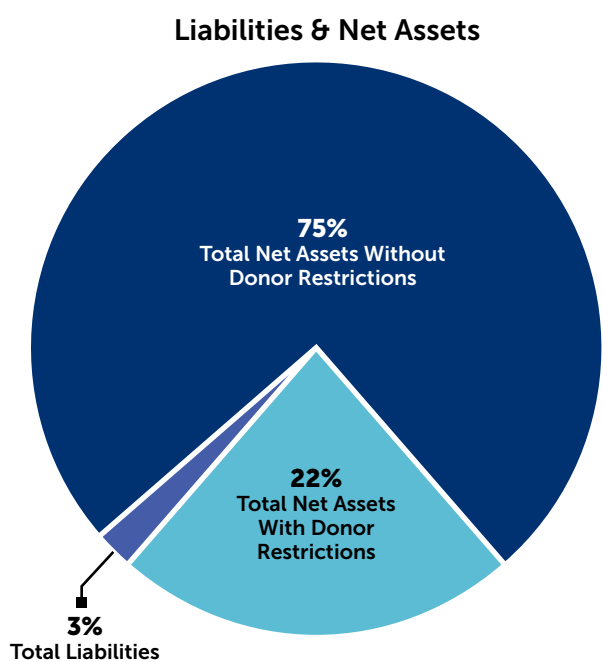
This fiscal year 2022 financial presentation is the audited financial report of the consolidated ESU, including all 65 branches and national operations.





Assets as of 6/30/2022	
Cash and cash equivalents	\$2,057,047
Investments held by National, at fair value	\$11,642,531
Investments held by Branches, at fair value	\$7,007,289
Headquarters building	\$3,459,537
Other*	\$619,710
Total Assets	\$24,786,114

* includes: certificates of deposit, accounts receivable, prepaid expenses and other assets, and office equipment (net of accumulated depreciation)



Liabilities and Net Assets	
Liabilities	
Accounts payable and accrued expenses	\$467,708
Paycheck Protection Program Loan payable	\$142,616
Capital lease payable	\$25,915
Total Liabilities	\$636,239
Net Assets	
Without Donor Restriction	
Investments in HQ building & equipment	\$3,510,194
Board designated	\$9,470,812
Undesignated	\$5,647,370
Total Net Assets w/o restriction	\$18,628,376
With Donor Restriction	
Time and purpose restricted	\$2,650,118
Perpetual in nature	\$2,871,381
Total Net Assets w/ restriction	\$5,521,499
Total Liabilities & Net Assets	\$24,786,114

Board and Staff

As of June 30, 2022

OFFICERS

Dr. E. Quinn Peeper
Chairman, New Orleans, LA

Darryl R. McCormick
Vice-Chairman, Stamford, CT

Duncan Karcher
President, New York, NY

H.E. Dr. Paul Beresford-Hill, CBE, KSt.J.
Chair, New York, NY

Karen Karpowich
Executive Director & Secretary of the Corporation,
New York, NY

BOARD OF DIRECTORS

Jacqueline Abrams
Winter Park, FL

Barbara W. Hughes
Winter Park, FL

Dr. Jill Toliver Richardson
Brooklyn, NY

Dr. Cheryl Albuquerque
Palo Alto, CA

Dana Ivey
New York, NY

Dr. Susan (Robin) Sinclair
Nashville, NT

Donald Best
Los Angeles, CA

Frederick London
Carlsbad, CA

Noel Sloan
New York, NY

Geneive Brown Metzger
Boca Raton, FL

David Martinelli
New York, NY

Bruce Thompson
Gibsonia, PA

Barbara Callahan
Palm Beach, FL

Bettie Miller
Chapman, AL

Dr. Julia Churchill Van de Water
Lexington, VA

Susan Matheson Ferris
Portland, OR

Donna M. Miller
Oviedo, FL

Dr. Ralph Wyndrum
Fair Haven, NJ

Dr. Janet V. Haedicke
Monroe, LA

STAFF

Elizabeth Bigelow
Manager, Branches Services,
Coordinator Evelyn Wrench
Speaker Series

Rossana Ivanova
Development Director

Betty Trevino Roth
Education Programs Director,
Shakespeare Performance and
Writing Programs

Anthony DiFilippo
Controller

Stephan Lubrun
Operations/IT
Assistant Manager

Alice Uhl
Education Programs Director,
International Scholarships and
Debate

Karl Hart
Senior Manager, Student Services

Kathryn Morrisett
Membership and
Database Manager

Bao Nguyen
Branches Bookkeeper

Laura Von der Heyde
Marketing and Communications
Manager

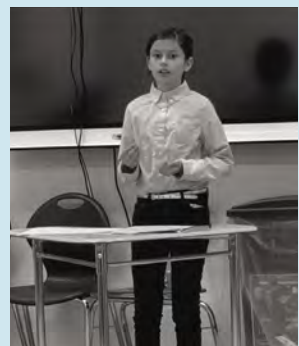
Jenny Nguyen
National Bookkeeper

Rona Weitz
Director,
Immigrant Programs

Matthew Hudson
Manager, Volunteer Services

Maria Pyaterneva
Receptionist

Noel Williamson
Facilities, Porter



ANNUAL REPORT 2022

The English-Speaking Union
144 East 39th St. | New York | NY 10016

Learn more at www.esuus.org