

# DELTA4000 Series 12 kV Insulation Diagnostic System



DELTA4310A test set shown above with onboard computer

- Wide frequency test voltage (1-500 Hz), includes DFR diagnostic capability
- Accurate measurement results under high noise conditions as tested to 765 kV substations
- Lightweight, rugged two-piece design
- Patented built-in individual temperature correction eliminates the need for temperature correction tables
- Industrial 300 mm (12 in.) touch-screen controller

## DESCRIPTION

The DELTA4000 Series is a fully automatic 12 kV insulation power factor/dissipation factor ( $\tan\delta$ ) test set designed for condition assessment of electrical insulation in high voltage apparatus such as transformers, bushings, circuit breakers, cables, lightning arresters and rotating machinery. In addition to performing insulation power factor tests, the DELTA4000 Series can be used to measure the excitation current of transformer windings as well as to perform automatic tip-up tests and HV turns-ratio testing (an optional TTR capacitor is available).

The test set is designed to provide a comprehensive AC insulation diagnostic test. The high power variable frequency design generates its own test signal independent of line frequency quality and the hardware design uses the latest technology available for digital filtering of the response signal. As a result, the DELTA4000 Series produces reliable results and stable readings in the shortest time with the highest accuracy, even in high interference substations.

The DELTA4000 Series operates with PowerDB software for automatic testing and reporting or with Delta Control software for real-time manual testing.

Measurements include voltage, current, power (loss), tan delta, inductance, power factor and capacitance. The test results are automatically stored in the computer and can also be downloaded directly to USB storage or a printer.

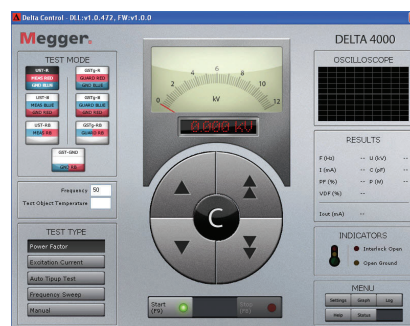
DELTA4110 test set is to be used with an external computer (not included) while the DELTA4310A test set comes with an onboard computer.

## APPLICATIONS

- |                             |                    |
|-----------------------------|--------------------|
| ■ Power transformers        | ■ Bushings         |
| ■ Distribution transformers | ■ Cables           |
| ■ Instrument transformers   | ■ Capacitors       |
| ■ Rotating machines         | ■ Circuit breakers |
| ■ Oil insulation            | ■ Surge arresters  |

## TEST CAPABILITIES

- |                                       |                           |
|---------------------------------------|---------------------------|
| ■ Power factor                        | ■ Capacitance             |
| ■ Dissipation factor ( $\tan\delta$ ) | ■ Voltage                 |
| ■ Excitation current                  | ■ Current                 |
| ■ Power factor tip-up                 | ■ Turns ratio*            |
| ■ Watts loss                          | * with optional accessory |
| ■ Inductance                          |                           |



DELTA manual control

**FEATURES AND BENEFITS**

**Performance and Accuracy**

- Generates its own test signal resulting in accurate and clean measurements even in the most severe conditions and in the event power is required from a portable generator.
- High noise suppression and advanced signal acquisition circuitry can handle up to 15 mA interference current or a signal to noise ratio of up to 1:20 resulting in extremely accurate and clean measurements even in the most severe conditions.
- Patented Individual Temperature Correction (ITC) allows the user to estimate the actual temperature dependence of the test object by measuring tan delta over a frequency range. Mathematically calculating accurate individual temperature correction results in a more accurate measurement of the insulating material’s condition.

**Wide frequency range test output (1-500Hz)**

- Ability to perform wide range DFR for diagnostic (1-500Hz) testing of transformer, bushings, etc.
- Allows testing of large capacitive specimens as well as ITC.
- Easier to test and lighter weight solution for large capacitive specimen testing.
- The following table is a sample specimen size vs. frequency output:

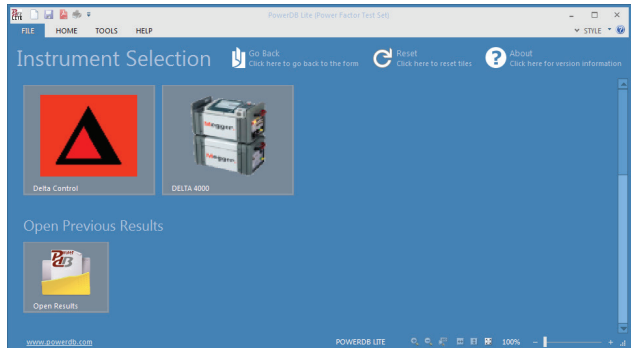
I Max Continuous (mA)	Max Volt (kV)	Frequency (Hz)	Cap (nF)
300	12	60	67
300	8	60	100
300	6	60	133
300	4	60	200
300	2	60	400
300	12	45	89
300	8	45	133
300	6	45	178
300	4	45	267
300	8	30	200
300	6	30	267
300	4	30	400
300	4	15	800
300	2	15	1600

**Designed for the Field**

- Two-piece design, weighing 14 kg + 22 kg, saves on effort, space, and shipping costs.
- Designed for various work environments: in the field; in a test van; in a manufacturing facility; or in a repair facility.
- Units have performed successful testing in the world’s most extreme conditions including: high temperatures, low temperatures, high elevations, high noise, and high humidity.

**Software Package — PowerDB LITE**

- Automatic and manual operation – provides fully automatic operation for tan delta as well as excitation current and tip-up testing. The user simply selects the test object and the unit will automatically run the complete test and report the results back to the test form.
- Easy to save and retrieve data – information will be saved in an XML file with all historical data. This allows the user to view previous year’s test sheet or trend specific test points.
- Capability to trend a specific asset over time (with optional Advanced or Pro version).
- Easily recall transformer setups from the settings menu.



**DELTA4310A OnBoard computer screen**

**PREMIUM SUPPORT**

Region dependent; please contact your Megger Sales Representative for details. Available in 1-yr, 2-yr, and 3-yr agreements.

- Extended product warranty protects your unit beyond the standard manufacturer’s warranty.
- Loaner units and loaner accessories provide guaranteed reliability. Loaners are delivered within 1-2 business days.
- Field application support provided by former utility engineers who have vast substation and transformer experience to guide you through your testing procedures and answer your questions.
- Software support and guidance through installation, importing older data, customizing forms, comparing results, and data trending.
- Onsite training on the equipment software, theory, field testing, data analysis, and PowerDB. Training can be provided on-site or at any of the Megger facilities.

**SPECIFICATIONS**

**Input Power**

90 - 264 V 45 - 66 Hz  
16 A max

No loss in performance when used with portable generator.

**Output Voltage**

0 to 12 kV, continuously adjustable

**Test Frequency Range**

45-70 Hz (12 kV)  
15-400 Hz (4 kV)  
1-505 Hz (250V)  
0.0001 Hz maximum resolution

**Output Power**

3.6 kVA

**Output Current**

300 mA (4 minutes)  
200 mA (30 minutes)  
100 mA (continuous)

The power supply capacity can be expanded to 4 A at 12 kV using the optional Resonating Inductor, (Cat. No. 670600-1).

**Measuring Ranges**

**Voltage**

25 V to 12 kV, 1 V resolution

**Current**

0 to 5 Amps, 0.1  $\mu$ A maximum resolution. The measurement can be corrected to either 2.5 kV or 10 kV equivalents.

**Capacitance:** 0 to 100  $\mu$ F, 0.01 pF maximum resolution

**Inductance:** 6 H to 10 MH, 0.1 mH maximum resolution

**Power factor:** 0-100% (0-1), 0.001% maximum resolution

**Dissipation factor:** 0-100 (0-10,000%), 0.001% maximum resolution

**Watt Loss**

0 to 2 kW, actual power, 0 to 100 kW when corrected to 10 kV equivalent.  
0.1 mW maximum resolution. The measurement can be corrected to either 2.5 kV or 10 kV equivalents.

**Temperature Correction**

**Individual temperature correction**

from 5°C to 50°C insulation test temperature to 20°C reference

**Standard tables**

As by international standards and manufacturers' data

**Accuracy**

Voltage  $\pm$ (1% of reading)  
Current  $\pm$ (1% of reading)  
Capacitance  $\pm$ (0.5% of reading + 1 pF)  
Inductance  $\pm$ (0.5% of reading + 1 mH)  
Power Factor and Dissipation Factor  $\pm$ (0.5% of reading + 0.02%)  
Watt Loss  $\pm$ (1% of reading + 1mW)  
Frequency  $\pm$ 0.005% of reading

**Noise Immunity**

**Electrostatic**

15mA induced noise into any test lead with no loss of measurement accuracy at maximum interference to specimen current of 20:1

**Electromagnetic**

500  $\mu$ T, at 50/60 Hz in any direction

**Measurement**

UST: Ungrounded Specimen Testing  
GST: Grounded Specimen Testing

**PC Requirements**

**DELTA4110**

Operating system: Windows 7, Windows 8 and Windows 10  
Processor: Min Pentium 1 GHz  
Memory: Min 1024 Mb RAM  
Hard drive: Min 2 Gb available  
Interface: USB and Ethernet

**DELTA4310A**

Internal PC (provided)

**DELTA4310A Provided Hardware**

**Touchscreen Display (ruggedized for field use)**

Size: 300 mm (12 in.)  
Resolution: 1024 x 768 (XGA)  
Luminance: 1600 nits  
Coating: anti-glare  
Backlight: LED  
Technology: 4-wire resistive touchscreen  
Memory: 32 Gigabits (SSD)

**Controls & Communication**

Built-in touchscreen, 2 only USB 2.0 ports and 1 only Ethernet interface (10/100 Mbps) provided for data export, built-in printer as well as OnBoard computer remote control of the Megger TTR3XX, MTO3XX, MLR10, MWA3XX and S1/MIT series insulation testers.

**Environment**

**Temperature**

Operating: -20 to +55° C (-4 to +131° F)  
Storage: -50 to +70° C (-58 to +158° F)

**Relative humidity**

Operating and Storage: 0 to 95% non-condensing

**Standards**

**Safety**

IEC/EN 61010-1:2001

**EMC**

EN 61326-1:2013

**Shock and Vibration**

IEC 68-2-31 Drop, Topple, Freefall

**Dimensions**

Control Unit: 290 x 290 x 460 mm (11 x 11 x 18 in.)  
High Voltage Unit: 290 x 290 x 460 mm (11 x 11 x 18 in.)

\*Does not include handles

**Weight**

DELTA4100	DELTA4300A	DELTA4010	HV Cable	Other Cables
14 kg (31 lbs)	17 kg (35 lbs)	23kg (48 lbs)	8 kg (18 lbs)	10 kg (23 lbs)

ORDERING INFORMATION			
Item [Qty]	Cat. No.	Item [Qty]	Cat. No.
DELTA4110 Insulation Diagnostic System (DELTA4100 control unit and DELTA4010 HV unit)	DELTA4110	<b>Optional Accessories</b> <i>For more details on DELTA4000 Accessories, please refer to the DELTA accessories brochure.</i>	
DELTA4310A Insulation Diagnostic System with onboard computer (DELTA4300A control unit and DELTA4010 HV unit)	DELTA4310A	Standard accessory kit, includes:	670501
<b>Included Accessories</b>		<ul style="list-style-type: none"> <li>■ Mini bushing tap connectors [set of 2] P/N 670506</li> <li>■ Hot collar straps [set of 3] P/N 670505</li> <li>■ Thermometer - hygrometer - clock [1] P/N 670504</li> <li>■ Temperature and humidity probe, complete with 7 m (20 ft) lead, P/N 2002-138</li> <li>■ 0.75" bushing tap adapter [1] P/N 30918-000</li> <li>■ 1" bushing tap adapter [1] P/N 30918-100</li> <li>■ "J" probe bushing tap adapter [1], P/N 30917</li> <li>■ 1 m (3 ft) non-insulating shorting lead, 3 each of P/N 34726-1</li> <li>■ 2 m (6 ft) non-insulating shorting lead, 3 each of P/N 34726-2</li> <li>■ Bushing tap adapter - ABB (older style bushings) P/N 2006-375</li> <li>■ Bushing tap adapter, female-to-female P/N 90014-353</li> <li>■ Bushing adapter, male to female P/N 90021-216</li> </ul>	
High voltage lead: 21 m (70 ft), double shielded	30012H-11	Safety hand switch, Interlock #2, 2.4 m (8 ft)	1001-851
Measurement lead, color-coded red, 21 m (70 ft)	25572-1	External HV strobe P/N 90009-210, complete with 18 m (60 ft) detachable lead P/N 1004-532	1004-639
Measurement lead, color-coded blue, 21 m (70 ft)	25572-2	Soft padded carrying case for control <b>or</b> HV unit [2 required]	2001-766
Ground lead: 9 m (30 ft)	2002-131	Transport case [2 required]	2005-115
Input power cable 16A EU	17032-29	Transport cart / trolley	2009-071
Input power cable 16A US	17032-28	Calibration kit (CAL4000)	2002-137
Input power cable 16A UK	17032-30	High-voltage reference standard	670500-1
Safety hand switch, Interlock #1, 21 m (70 ft)	1001-850	Transit case for 670500-1	670635
Safety foot interlock, 3m (10 ft)	1001-852	HV TTR capacitor, single phase (10 nF, 10 kV)	36610
HV unit power cable, 1 m (3 ft)	2002-132	HV reference capacitor (100 pF, 10 kV)	36610-1
HV unit control cable, 1 m (3 ft)	2002-133	HV reference capacitor (1000 pF, 10 kV)	36610-2
Ground lead interconnect cable, 1 m (3 ft)	2002-134	Transit case for capacitor set of 3 above	36610-CC
USB cable, 2 m (7 ft)	CA-USB	Capacitor kit (TTR cap, 2 ref caps, transit case)	36610-KIT2
Ethernet cable, CAT 5, 2 m (7 ft)	36798	Resonating inductor	670600-1
Lead Bag for HV cable	2001-507	Adapter kit for DELTA4000 and competitor's resonating inductor	1002-455
Lead Bag for other cables/accessories	2005-265	Oil test cell, field model, complete with transit case	670511
Software DELTA manual control	1001-981	Oil test cell, high-temperature lab model, complete with transit case	1004-716
PowerDB Lite software		Factory upgrade: DELTA4110 to DELTA4310A <i>Note: only available for DELTA4110 units built after August 1, 2017</i>	1010-297
<b>Optional Software</b>			
PowerDB Pro software, on USB dongle	DB1001S-A		
Advanced PowerDB software, on USB dongle	DB1011		
<b>Optional Extended Warranty and Annual Support</b>			
Priority Access annual support plan	D4K-P-ACCESS		
Additional 6-month product warranty	Y6-WARRANTY		
Additional 12-month product warranty	Y12-WARRANTY		
Additional 24-month product warranty	Y24-WARRANTY		
Additional 36-month product warranty	Y36-WARRANTY		

**SALES OFFICE**

Megger Limited  
Archcliffe Road Dover  
CT17 9EN England  
T +44 (0) 1304 502101  
E UKsales@megger.com

**DELTA4000\_DS\_en\_V14**

www.megger.com  
ISO 9001:2008  
The word 'Megger' is a registered trademark

